

SBT5002 User Manual

SHARPER IMAGE

Dancing Water Speakers with Subwoofer



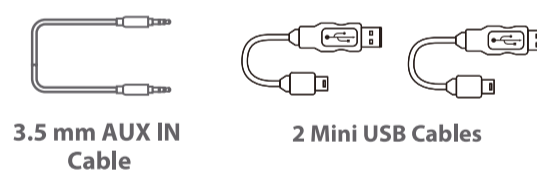
User Guide
SBT5002

In the box



Dancing Water Speakers with Subwoofer

User Guide

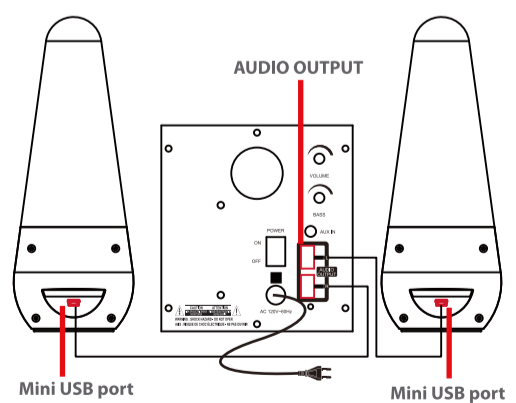


3.5 mm AUX IN Cable

2 Mini USB Cables

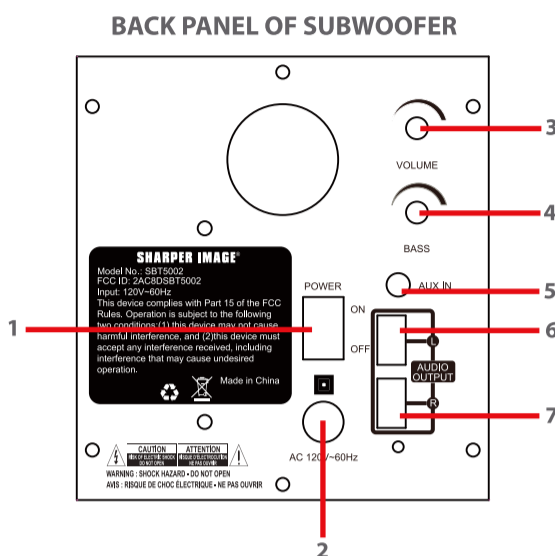
Connecting the speakers

1. Connect the small end of one of the Mini USB cables to the Mini USB port on the back of one of the water speakers. Do the same for the second water speaker.
2. Connect the large end of one of the Mini USB cables to the USB Audio Output ports on the back of the subwoofer. Do the same for the second water speaker.

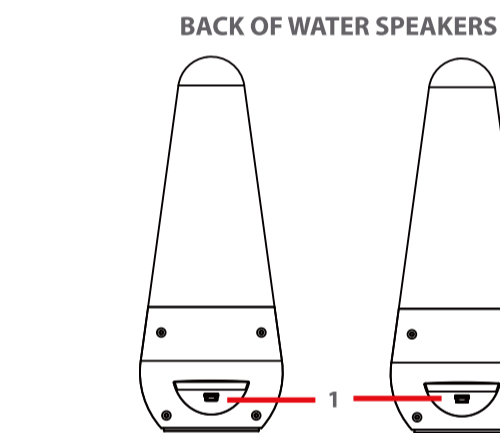


3. Plug the AC power cord into a wall socket and switch the Power switch to the ON position.

Location of controls



1. Power ON/OFF switch
2. AC 12V power cord
3. Volume knob
4. Bass knob
5. AUX IN jack
6. Audio Output Mini USB port (left)
7. Audio Output Mini USB port (right)



1. Mini USB ports

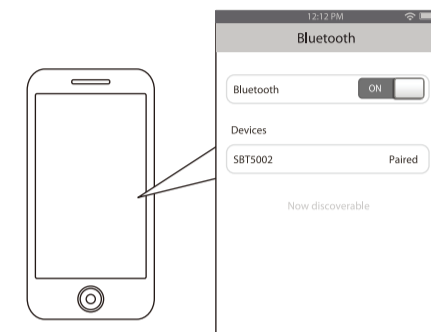
Pairing the speaker with a Bluetooth enabled device

1. Switch the Power switch on the back of the subwoofer to the ON position.
2. A tone will be heard indicating that the speaker is in pairing mode.
3. Keep the speaker and Bluetooth enabled device within 3 feet of each other during the pairing process.
4. Set your mobile phone or other Bluetooth enabled device to search for Bluetooth devices.

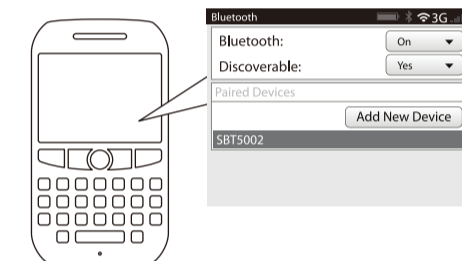


i If there are no paired devices in range when the speaker is turned on, it will go into pairing mode automatically. If a paired device is in range, the speaker will connect to it automatically.

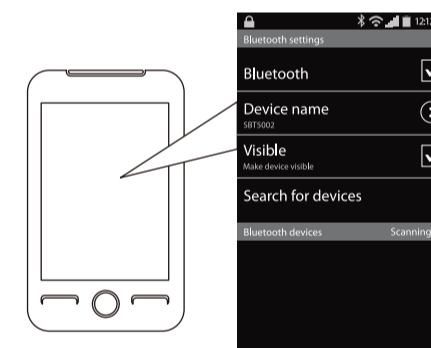
On an iPhone
• Go to **SETTINGS > BLUETOOTH** (Make sure Bluetooth is turned ON)



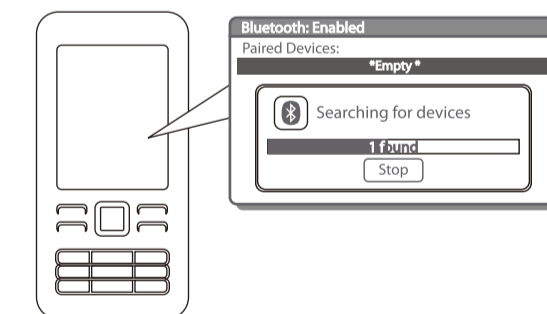
On a Blackberry
• Go to **SETTINGS/OPTIONS > BLUETOOTH**
• Enable **BLUETOOTH** (Make sure Bluetooth is turned ON)



On an Android Phone
• Go to **SETTINGS > BLUETOOTH > MENU > Search for devices** (Make sure Bluetooth is turned ON)



On other Cell Phones/Devices
• Review the instruction manual that came with your phone/device.



5. When the Bluetooth enabled device finds the speaker, select "SBT5002" from the list of found devices.
6. If required, enter the password 0000. Select OK or Yes to pair the two units.
7. A tone will sound, indicating that the pairing was successful.

NOTE: If you would like to connect the speaker to another device, you must disconnect the speaker from the currently paired device first. On your device's Bluetooth settings, select "SBT5002", then select "disconnect" or "unpair". When the speaker has been unpaired, repeat the pairing process.

i The screenshots above are typical of many Bluetooth enabled devices in the market today, and are used to assist in the explanation of the pairing process. Your Bluetooth enabled device's interface and interaction with the speaker may slightly differ from the illustrations above.

Using the speakers

Powering ON/OFF

- Plug the AC power cord of the subwoofer into a wall socket.
- Use the Power switch on the back of the subwoofer to turn the speakers ON and OFF.

Adjusting the volume

Turn the Volume knob on the back of the subwoofer to the left to decrease the volume. Turn it to the right to increase the volume.

i You can also adjust the volume from your connected device's volume control.

Adjusting the bass level

Turn the Bass knob on the back of the subwoofer to the left to decrease the bass level. Turn it to the right to increase the bass level.

NOTE: To enable the dancing water feature, you must turn up the volume of your connected device.

Playing music

To enjoy wireless music on your Bluetooth Speaker, make sure you are connected to a Bluetooth enabled device. Once connected press PLAY on your Bluetooth device. When playback has begun, control the music with your connected device (that has the AVRCP Bluetooth profile).

i You can also adjust the volume from your connected device's volume control.

Using as wired speakers

1. Turn ON the speaker.
2. Connect one end of the included 3.5mm auxiliary cable to the AUX IN jack on the back of the subwoofer and the other end to an external device's headphone jack (smartphone, tablet, or MP3 player).
3. Open a media player on your device and click on PLAY to start playing your music.
4. Use the controls on your connected device to control music playback and volume.

i Connecting the audio cable will override Bluetooth mode. When the cable is disconnected, the speaker will automatically reconnect to the last paired device.

Troubleshooting tips

i I can pair the Bluetooth Speakers with my Bluetooth device, but I cannot hear any music.

1. Make sure your Bluetooth device supports A2DP profile.
2. Turn up the volume on your Bluetooth device.
3. You may have to unpair the speaker, then re-pair to your device.

i I cannot get the Bluetooth Speakers into Pairing Mode.

1. Switch the Power switch on the back of the subwoofer to the ON position.
2. A tone will be heard indicating that the speaker is in pairing mode.

i My Bluetooth Device is not able to pair with the Bluetooth Speakers.

1. Keep the Bluetooth Speakers and Bluetooth enabled device within 3 feet of each other during the pairing process.
2. Switch the Power switch on the back of the subwoofer to the ON position. A tone will be heard indicating that the speaker is in pairing mode.
3. Check that YOUR device's Bluetooth feature is turned ON.
4. Try repeating the pairing process, see "Pairing the speakers with a Bluetooth enabled device".

Safety instructions

1. Read these instructions.
2. Keep these instructions.
3. Heed all warnings.
4. Follow all instructions.
5. Do not use this apparatus near water.
6. Clean only with a dry cloth.
7. Do not block any ventilation openings. Install in accordance with the manufacturer's instructions.
8. Do not install near any heat sources such as radiators, heat registers, stoves, or other apparatus (including amplifiers) that produce heat.
9. Do not defeat the safety purpose of the polarized or grounding-type plug. A polarized plug has two blades with one wider than the other. A grounding type plug has two blades and a third grounding prong. The wide blade or the third prong are provided for your safety. When the provided plug does not fit into your outlet, consult an electrician for replacement of the obsolete outlet.
10. Protect the power cord from being walked on or pinched particularly at plugs, convenience receptacles, and the point where they exit from the apparatus.
11. Only use attachments/accessories specified by the manufacturer.
12. Use only with a cart, stand, tripod, bracket, or table specified by the manufacturer, or sold with the apparatus. When a cart is used, use caution when moving the cart/apparatus combination during lightning storms or when unused for long periods of time.



13. Unplug the apparatus during lightning storms or when unused for long periods of time.
14. Refer all servicing to qualified service personnel. Servicing is required when the apparatus has been damaged in any way, such as power-supply cord or plug is damaged; liquid has been spilled or objects have fallen into the apparatus; the apparatus has been exposed to rain or moisture, does not operate normally, or has been dropped.
15. **WARNING:** The mains plug is used as a disconnect device; the disconnect device shall remain readily operable.
16. **WARNING:** To reduce the risk of fire or electric shock, do not expose this apparatus to rain or moisture. The apparatus shall not be exposed to dripping or splashing, and objects filled with liquids, such as vases, shall not be placed on apparatus.
17. This equipment is a Class II or double insulated electrical appliance. It has been designed in such a way that it does not require a safety connection to electrical earth.



The lightning flash with arrowhead symbol within an equilateral triangle is intended to alert the user to the presence of uninsulated "dangerous voltage" within the product's enclosure that may be of sufficient magnitude to constitute a risk of electric shock to the person.

The exclamation point within an equilateral triangle is intended to alert the user to the presence of the operating and maintenance (servicing) instructions in the literature accompanying the appliance.

Additional warnings and precautions

• Battery shall not be exposed to excessive heat such as sunshine, fire or the like. Danger of explosion if battery is incorrectly replaced. Replace only with the same or equivalent type.
• Batterie (batterie ou piles installées) ne doit pas être exposée à une chaleur excessive comme le soleil, le feu, etc. Danger d'explosion si la pile n'est pas remplacée correctement. Ne remplacer que par le même type ou un type équivalent.

CAUTION: TO PREVENT ELECTRIC SHOCK, MATCH WIDE BLADE OF PLUG TO WIDE SLOT, FULLY INSERT.

CAUTION: Use of controls or adjustments or performance of procedures other than those specified may result in hazardous radiation exposure.

WARNING: Changes or modifications to this unit not expressly approved by the party responsible for compliance could void the user's authority to operate the equipment.

WARNING: Do not place this unit directly onto furniture surfaces with any type of soft, porous, or sensitive finish. As with any rubber compound made with oils, the feet of this unit may cause marks or staining where they reside. We recommend using a protective barrier such as a cloth or a piece of glass between the unit and the surface to reduce the risk of damage and/or staining.

WARNING: Use of this unit near fluorescent lighting may cause interference regarding use of the remote. If the unit is displaying erratic behavior move away from any fluorescent lighting, as it may be the cause.

WARNING: Shock hazard - Do Not Open.

WARNING: TO REDUCE THE RISK OF ELECTRIC SHOCK, DO NOT REMOVE COVER (OR BACK). NO USER-SERVICEABLE PARTS INSIDE. REFER SERVICING TO QUALIFIED SERVICE PERSONNEL.

Legal information

FCC Part 15:

This equipment has been tested and found to comply with the requirements for a Class B digital device under Part 15 of the Federal Communications Commission (FCC) rules. These requirements are intended to provide reasonable protection against harmful interference in a residential installation. This equipment generates, uses and can radiate radio frequency energy and, if not installed and used in accordance with the instructions, may cause harmful interference to radio communications. However, there is no guarantee that interference will not occur in a particular installation. If this equipment does cause harmful interference to radio or television reception, which can be determined by turning the equipment off and on, the user is encouraged to try to correct the interference by one or more of the following measures:

- Re-orient or relocate the receiving antenna.
- Increase the separation between the equipment and receiver.
- Connect the equipment into an outlet on a circuit different from that to which the receiver is connected.
- Consult the dealer or an experienced radio/TV technician for help.

Do not attempt to repair or modify this equipment. Warning: Changes or modifications to this equipment not expressly approved by the party responsible for compliance could void the user's authority to operate the equipment. "This device complies with Part 15 of the FCC Rules. Operation is subject to the following two conditions:

- (1) this device may not cause harmful interference, and
- (2) this device must accept any interference received, including interference that may cause undesired operation."

This equipment complies with FCC radiation exposure limits set forth for an uncontrolled environment. This equipment should be installed and operated with minimum distance of 20cm between the radiator and your body.

Limited Warranty

90 Days Limited Warranty

In the unlikely event that this product is defective, or does not perform properly, you may within ninety (90) days from your original date of purchase return it to the authorized service center for repair or exchange.

TO OBTAIN WARRANTY SERVICE:

- Provide proof of the date of purchase within the package (Dated bill of sale).
- Prepay all shipping costs to the authorized service center, and remember to insure your return.
- Include a return shipping address (no P.O. Boxes), a telephone contact number, and the defective unit within the package.
- Describe the defect or reason you are returning the product.

Your product will be repaired or replaced, at our option, for the same or similar model of equal value if examination by the service center determines this product is defective. Products received damaged as a result of shipping will require you to file a claim with the carrier.

The shipping address of the authorized service center is:

Southern Telecom, Inc.
Attention: Customer Service (2nd Floor)
14-C 53rd Street
Brooklyn, NY 11232

Should you have any questions or problems concerning this product, please contact our customer service department at:

Customer Support:
Phone: 1-877-768-8481
Monday-Friday 8AM-10PM(EST)

www.southern telecom.com
Click on "Product Support"

Warranty service not provided

This warranty does not cover damage resulting from accident, misuse, abuse, improper installation or operation, lack of reasonable care, and unauthorized modification. This warranty is voided in the event any unauthorized person opens, alters or repairs this product. All products being returned to the authorized service center for repair must be suitably packaged.

Limitation of Warranty:

• THE WARRANTY STATED ABOVE IS THE ONLY WARRANTY APPLICABLE TO THIS PRODUCT. ALL OTHER WARRANTIES, EXPRESS OR IMPLIED INCLUDING ALL IMPLIED WARRANTIES OF MERCHANTABILITY OR FITNESS FOR A PARTICULAR PURPOSE ARE HEREBY DISCLAIMED. NO VERBAL OR WRITTEN INFORMATION GIVEN BY AIT, INC.'S AGENTS, OR EMPLOYEES SHALL CREATE A WARRANTY OR IN ANY WAY INCREASE THE SCOPE OF THIS WARRANTY.

• REPAIR OR REPLACEMENT AS PROVIDED UNDER THIS WARRANTY IS THE EXCLUSIVE REMEDY OF THE CONSUMER. AIT, INC. SHALL NOT BE LIABLE FOR INCIDENTAL OR CONSEQUENTIAL DAMAGES RESULTING FROM THE USE OF THIS PRODUCT OR ARISING OUT OF ANY BREACH OF ANY EXPRESS OR IMPLIED WARRANTY ON THIS PRODUCT. THIS DISCLAIMER OF WARRANTIES AND LIMITED WARRANTY ARE GOVERNED BY THE LAWS OF THE STATE OF NEW YORK. EXCEPT TO THE EXTENT PROHIBITED BY APPLICABLE LAW, ANY IMPLIED WARRANTY OF MERCHANTABILITY OR FITNESS FOR A PARTICULAR PURPOSE ON THIS PRODUCT IS LIMITED TO THE APPLICABLE WARRANTY PERIOD SET FORTH ABOVE.

Some states do not allow the exclusion nor limitation of incidental or consequential damages, or limitations on how long an implied warranty lasts so the above limitations on exclusions may not apply to you. This warranty gives you specific legal rights, and you also may have other rights that vary from state to state.

Sharper Image® name and logo are registered trademarks. Manufactured and marketed by Southern Telecom under license. © Sharper Image. All Rights Reserved.

SHARPER IMAGE