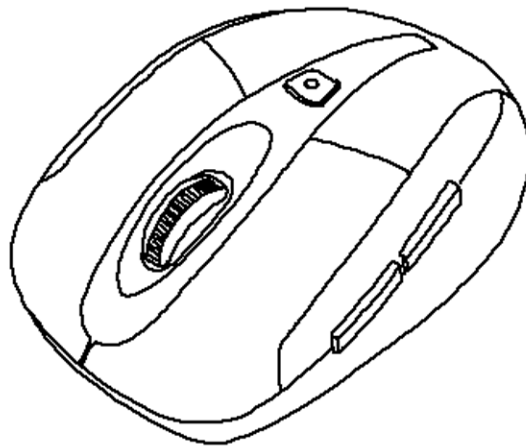




# 2.4 GHz Wireless Optical Tilt-Wheel Mouse

MS-148OR



## User Manual

All brand name and trademarks are the property of their respective companies  
Mac and Mac OS X are registered trademarks of Apple Inc.  
Windows, Windows XP, Windows Vista and Windows 7 are registered trademarks of  
Microsoft Corporation in the United States and/or other countries.

## USER RECORD

To provide quality customer service and technical support, it is suggested that you keep the following information as well as your store receipt and this user manual.

Date of Purchase: \_\_\_\_\_

Model Number: \_\_\_\_\_

Product Rev Number (located below the UPC on the package): \_\_\_\_\_

## FCC RADIATION NORM

### FCC

This equipment has been tested and found to comply with limits for Class B digital device pursuant to Part 15 of Federal Communications Commission (FCC) rules.

### FCC Compliance Statement

These limits are designed to provide reasonable protection against frequency interference in residential installation. This equipment generates, uses, and can radiate radio frequency energy, and if not installed or used in accordance with the instructions, may cause harmful interference to radio communication. However, there is no guarantee that interference will not occur in television reception, which can be determined by turning the equipment off and on. The user is encouraged to try and correct the interference by one or more of the following measures:

- Reorient or relocate the receiving antenna.
- Increase the separation between the equipment and the receiver.
- Connect the equipment into an outlet on a circuit different from that to which the receiver is connected.
- Consult the dealer or an experienced radio/TV technician for help.



### CAUTION

The Federal Communications Commission warns the user that changes or modifications to the unit not expressly approved by the party responsible for compliance could void the user's authority to operate the equipment.

## **PACKAGE CONTENTS**

Your new mouse will ship with the following items:

- **2.4GHz Wireless Optical Tilt-Wheel Mouse**
- **Nano Receiver**
- **2 AAA Batteries**
- **User Manual**
- **Warranty Information**

## **SYSTEM REQUIREMENTS**

Please be sure that you meet all of the system requirements below to avoid difficulties during installation

**Compatible with: PCs, Mac<sup>®</sup> computers, and Chromebook<sup>™</sup> notebook computers**

**Works with:**

- **Windows<sup>®</sup> XP, Windows<sup>®</sup> Vista , and Windows<sup>®</sup> 7 operating systems**
- **Mac OS X<sup>®</sup> 10.3 and above (Tilt-Wheel function is compatible with PCs only)**
- **An available USB port**

## **SPECIFICATIONS**

Your new mouse complies with the following specifications:

- **USB Interface**

**Note: In order for the tilt-wheel function to work on your mouse you MUST download the setup software from the Gear Head website.**

## INSTALLING BATTERIES

To properly install batteries into your mouse, please follow the instructions below:

1. Remove the battery compartment cover from your mouse.



2. Install two AAA batteries into the battery compartment following the orientation guide in the battery bay.



3. Replace the battery compartment cover back onto your mouse until it locks securely.



## INSTALLATION

### For All Operating Systems

1. Make sure you have successfully installed the batteries into your mouse. Refer to the Installing Batteries section in this manual if necessary.
2. Pull out the Nano Receiver stowed in the bottom of your mouse.



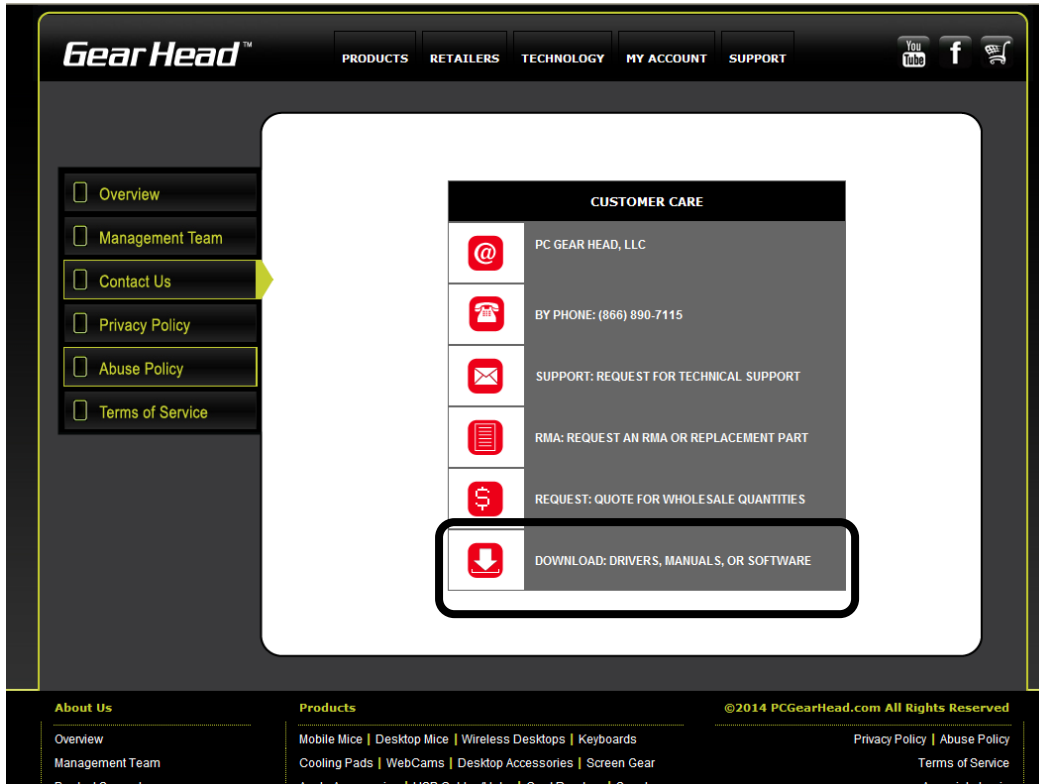
3. Turn on your computer and plug the Nano Receiver into an available USB port on your computer. (If you are not able to find a USB port on your computer, please refer to the user manual of your computer for more detail.) Your wireless optical mouse is now ready!



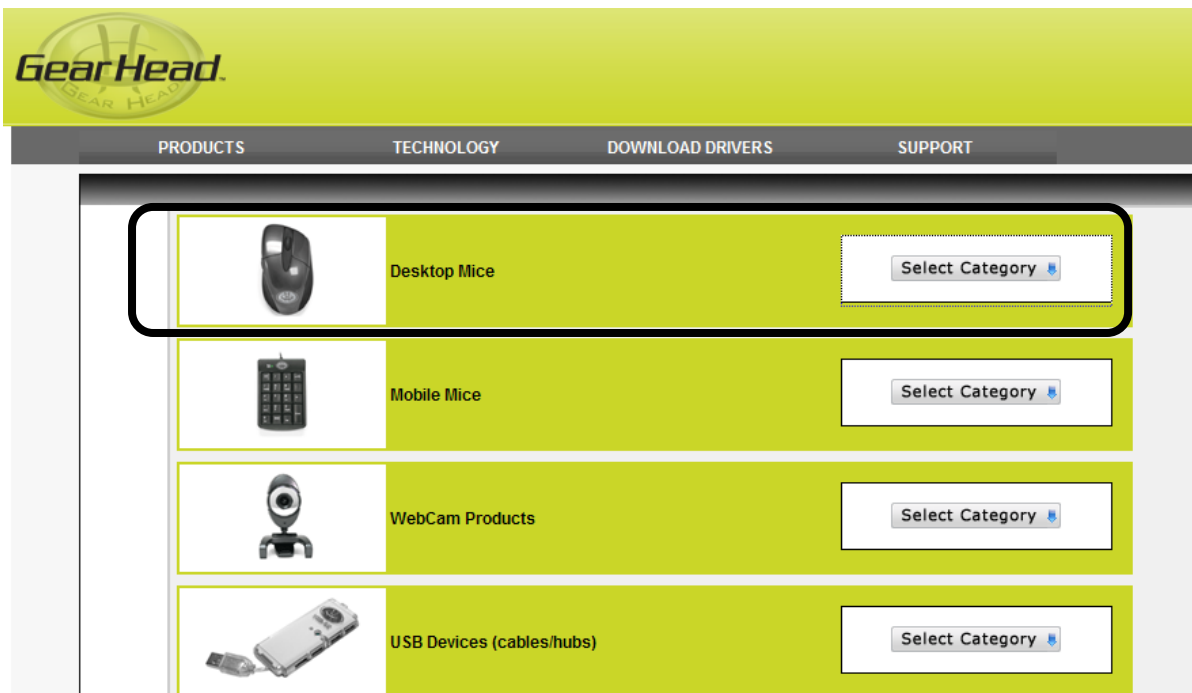
## DOWNLOADING TILT-WHEEL SETUP SOFTWARE

In order for the tilt-wheel function to work on your mouse you **MUST** download the setup software from the Gear Head website.

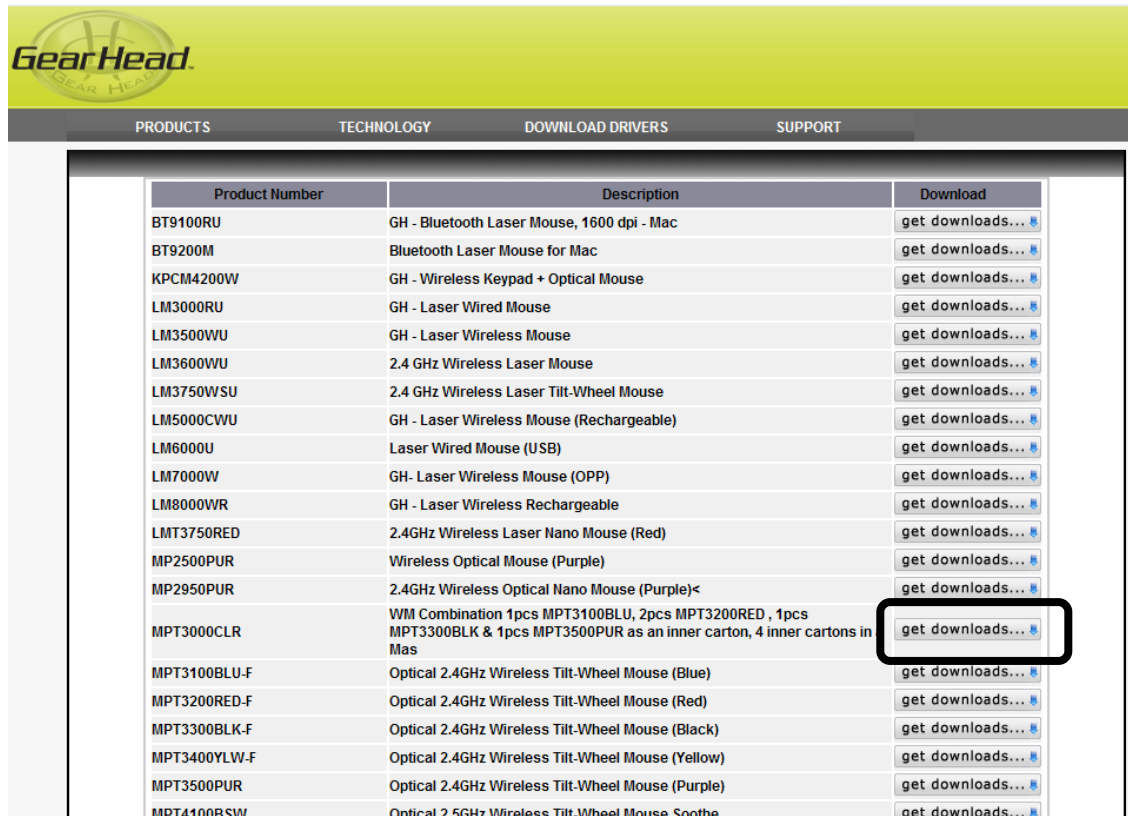
1. Go to the Support page (<http://pcgearhead.com/support.php>) on the Gear Head website and click the **DOWNLOAD: DRIVERS, MANUALS, OR SOFTWARE** button.



2. Find Desktop Mice and click Select Category.

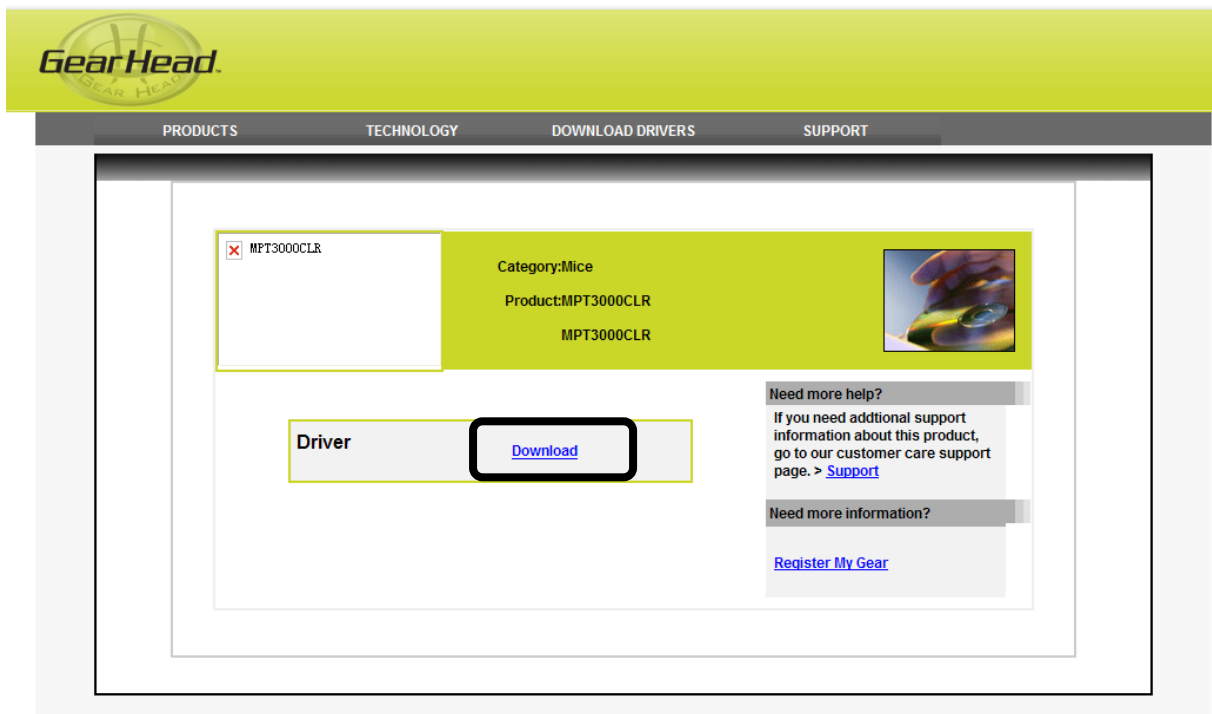


3. Find your model and click get downloads....



Product Number	Description	Download
BT9100RU	GH - Bluetooth Laser Mouse, 1600 dpi - Mac	get downloads...
BT9200M	Bluetooth Laser Mouse for Mac	get downloads...
KPCM4200W	GH - Wireless Keypad + Optical Mouse	get downloads...
LM3000RU	GH - Laser Wired Mouse	get downloads...
LM3500WU	GH - Laser Wireless Mouse	get downloads...
LM3600WU	2.4 GHz Wireless Laser Mouse	get downloads...
LM3750WSU	2.4 GHz Wireless Laser Tilt-Wheel Mouse	get downloads...
LM5000CWU	GH - Laser Wireless Mouse (Rechargeable)	get downloads...
LM6000U	Laser Wired Mouse (USB)	get downloads...
LM7000W	GH- Laser Wireless Mouse (OPP)	get downloads...
LM8000WR	GH - Laser Wireless Rechargeable	get downloads...
LMT3750RED	2.4GHz Wireless Laser Nano Mouse (Red)	get downloads...
MP2500PUR	Wireless Optical Mouse (Purple)	get downloads...
MP2950PUR	2.4GHz Wireless Optical Nano Mouse (Purple)<	get downloads...
MPT3000CLR	WM Combination 1pcs MPT3100BLU, 2pcs MPT3200RED , 1pcs MPT3300BLK & 1pcs MPT3500PUR as an inner carton, 4 inner cartons in Mas	get downloads...
MPT3100BLU-F	Optical 2.4GHz Wireless Tilt-Wheel Mouse (Blue)	get downloads...
MPT3200RED-F	Optical 2.4GHz Wireless Tilt-Wheel Mouse (Red)	get downloads...
MPT3300BLK-F	Optical 2.4GHz Wireless Tilt-Wheel Mouse (Black)	get downloads...
MPT3400YLW-F	Optical 2.4GHz Wireless Tilt-Wheel Mouse (Yellow)	get downloads...
MPT3500PUR	Optical 2.4GHz Wireless Tilt-Wheel Mouse (Purple)	get downloads...
MPT4100RSW	Optical 2.5GHz Wireless Tilt-Wheel Mouse Soothe	get downloads...

4. A pop-up window will appear to initiate the download; click Download to start downloading.



MPT3000CLR

Category:Mice

Product:MPT3000CLR

MPT3000CLR

Driver


[Download](#)

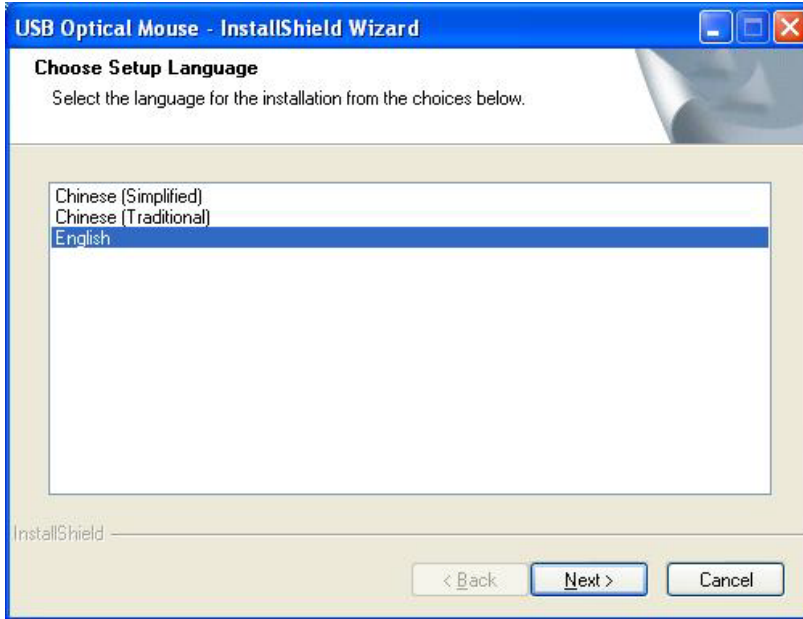
Need more help?  
If you need additional support information about this product, go to our customer care support page. > [Support](#)

Need more information?  
[Register My Gear](#)

5. Follow the onscreen instructions to download the setup software (MPT3000CLR).

## INSTALLING THE SETUP SOFTWARE

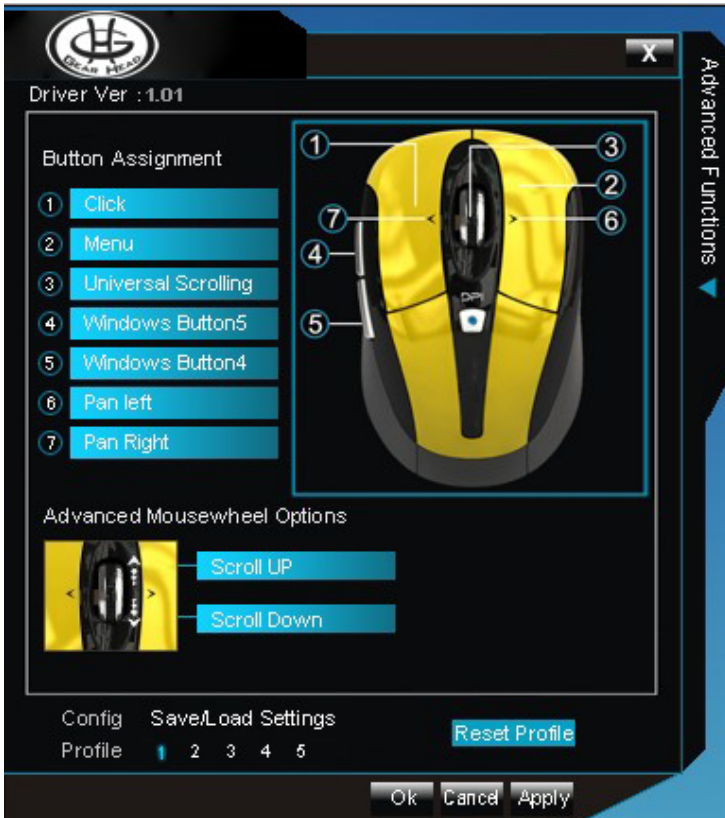
1. Decompress the downloaded software and click the Set Up  to begin installation.
2. The USB Optical Mouse - InstallShield Wizard will appear on the desktop. Choose your installation language on the following screen and click Next to continue.



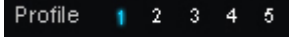

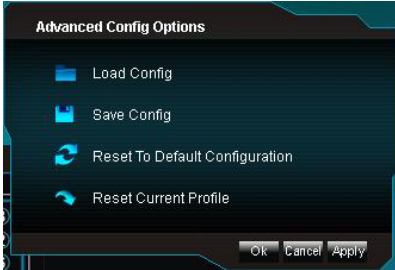

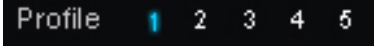
3. Follow the onscreen instructions to finish the software installation. Please restart your computer after the installation is finished.



# USING THE SOFTWARE



<p><b>Button Assignment</b></p> <p>You can assign a function to any button of your mouse by selecting from the functions stored in the drop-down menu of each button. These are the 12 options:</p> <ul style="list-style-type: none"> <li>- Click</li> <li>- Menu,</li> <li>- Universal Scrolling,</li> <li>- Double-click</li> <li>- Advanced Functions (see right for details)</li> <li>- Button 4</li> <li>- Button 5</li> <li>- Switch Profile</li> <li>- Cycle of Switch Profile</li> </ul>	<p><b>Advanced Functions</b></p> <p>Advanced Function Input Press the keyboard key(s) to assign to this button. Then select "Apply".</p> <p>Single Key    Macro</p> <p>Advanced Function Basic Commands Selection Function Additional Commands Selection Function Media Functions Selection Function</p> <p>Insert Delay (60MS)</p>	<p><b>Single/Macro</b></p> <p><b>Basic Commands</b></p> <p><b>Additional Commands</b></p> <p><b>Media Functions</b></p>	<p>You can assign any key function or key combination to a single button on your mouse.</p> <p>The drop-down menu provides 9 basic word document software operations.</p> <p>The drop-down menu provides 7 basic system operations.</p> <p>The drop-down menu provides 7 basic media operation modes. <b>Tip: Press and hold the DPI button on your mouse for 5 seconds and then it can be used to play/pause your media, while the horizontal tilt-wheel function can be used as volume up/down. To return to the normal mode, press the DPI button for 5 seconds</b></p>
---	---	---	--

<ul style="list-style-type: none"> <li>- Pan Left</li> <li>- Pan Right</li> <li>- Button Off</li> </ul>		again.
	<b>Switch Profile</b>	<p>You can set the functions of your mouse buttons to go to a specified mouse configuration profile, every time that mouse button is clicked.</p> 
	<b>Cycle of Switch Profile</b>	<p>You can rotate between the 5 profiles you have set by clicking the assigned mouse button. The 5 configurations can be set and stored using the software.</p> 
<b>Advanced Mousewheel Options</b>	<p>You can assign a function to the vertical (up or down) operation of your tilt-wheel by selecting from the functions stored in the drop-down menu: Click, Menu, Double-click, Advanced Functions, Scroll Up, and Scroll Down are available.</p>	
<b>Config Save/Load Settings</b>  Click Save/Load Settings to enter the following screen and perform one of four functions. 	<b>Load Config</b>	Retrieve a configuration previously saved to your computer.
	<b>Save Config</b>	<p>After assigning custom functions to your mouse buttons, you can save up to 5 different configurations.</p> 
	<b>Reset to Default Configuration</b>	Revert all settings back to the default configuration.
	<b>Reset Current Profile</b>	Change the current settings shown on the software screen back to the default settings.
	<p>You can store up to 5 different configurations with this software. Select a number then change the configuration in the Button Assignment and Advanced Mousewheel Options menu. Next click Ok under the Advance Config Options menu to save your settings to that profile.</p>	

## CHANGING THE SPEED OF YOUR MOUSE

To adjust the speed of the cursor or the scroll button features on your computer, follow the instructions below:

**NOTE:** The screenshots show in this section are for demonstration only and your screen may look slightly different but with similar options.

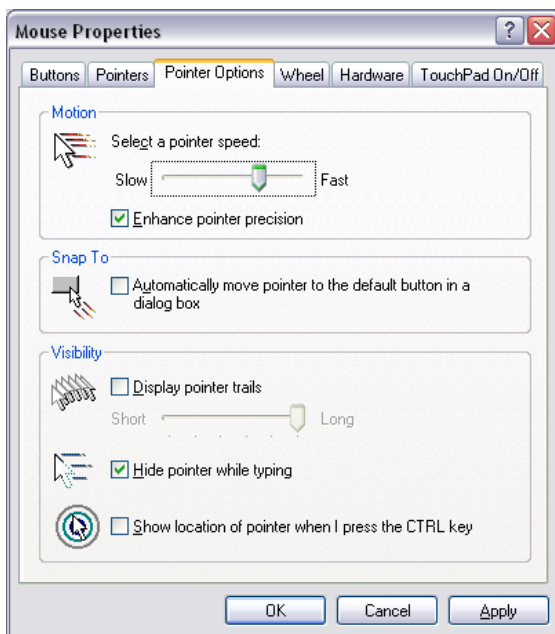
### For Windows® Operating Systems

Open the Control Panel. Double-click the Mouse icon to open the Mouse Properties screen and then select Pointer Options. Adjust the settings to your liking and select Apply then OK.

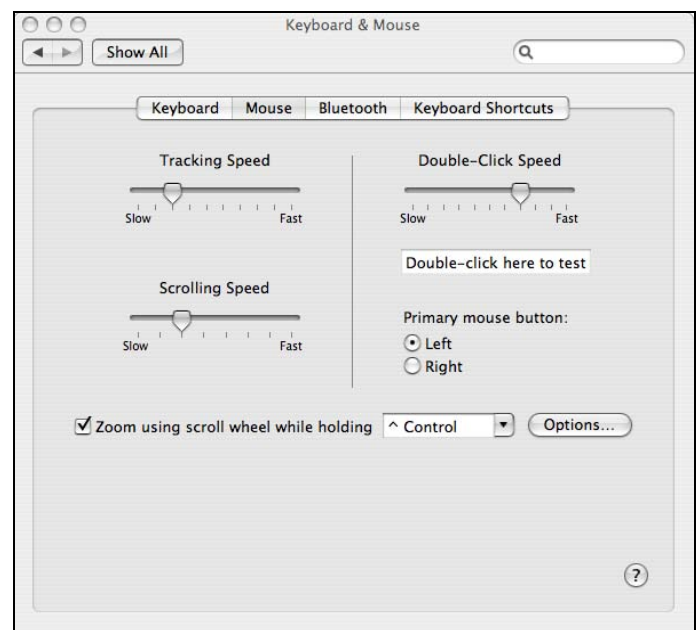
### For Mac OS X® 10.3 and Above

Open System Preferences. At the System Preferences screen, click the Keyboard & Mouse icon. Select the Mouse tab and make your changes.

#### Windows® Operating Systems



#### Mac OS X® 10.3 and Above





## WARRANTY INFORMATION



**Gear Head, LLC warrants that this product shall be free from defects in materials and workmanship for the reasonable lifetime of the product. If the product is defective, Gear Head, LLC's sole obligation under this warranty shall be at its election, subject to the terms of this warranty, to repair or replace any parts deemed defective. This warranty is for the exclusive benefit of the original purchaser and is not assignable or transferable. THIS WARRANTY IS MADE IN LIEU OF ALL OTHER WARRANTIES, EXPRESS OR IMPLIED, AND ANY IMPLIED WARRANTIES, INCLUDING THE IMPLIED WARRANTIES OF MERCHANTABILITY AND FITNESS FOR A PARTICULAR PURPOSE, ARE LIMITED TO THE TERMS OF THIS WARRANTY, UNLESS OTHERWISE PROHIBITED BY LAW.**

### Exclusions

To the fullest extent permitted by law, Gear Head, LLC expressly disclaims and excludes from this warranty any liability for damages, including but not limited to general, special, indirect, incidental, consequential, aggravated, punitive or exemplary damages, and economic loss (even if Gear Head™ is informed of their possibility), third party claims against you, including for any loss or damages, and claims or damages related to loss of, or, damage to, your records or data. This warranty does not apply to any product the exterior of which has been damaged or defaced. This warranty will be voided by misuse, improper physical environment, improper repair, acts of God, war or terror, commercial use, and improper service, operation or handling.

### Technical Support

Please access Technical Support on the web or contact our technicians at [info@pcgearhead.com](mailto:info@pcgearhead.com) for help.

[www.pcgearhead.com](http://www.pcgearhead.com)

Gear Head™ provides phone support, 866-890-7115, Monday - Friday from 9:00 am – 5:30 pm Eastern Time. Before calling, please make sure you have available the Model # (located on the front page of your User Manual) and information regarding your computer's operating system.

### Return Merchandise for Service

Any claim under this warranty must be made in writing to Gear Head, LLC, within 30 days after the owner discovers the circumstances giving rise to any such claim, and must include a copy of this warranty document, a receipt or copy of your invoice marked with the date of purchase, and the original packaging. You may contact us on the web at [www.pcgearhead.com](http://www.pcgearhead.com) or by emailing us at [info@pcgearhead.com](mailto:info@pcgearhead.com) to receive service or request a return service authorization.

**Warning:** changes or modifications not expressly approved by the party responsible for compliance could void the user's authority to operate the equipment.

**NOTE:** This equipment has been tested and found to comply with the limits for a Class B digital device, pursuant to Part 15 of the FCC Rules. These limits are designed to provide reasonable protection against harmful interference in a residential installation. This equipment generates, uses and can radiate radio frequency energy and, if not installed and used in accordance with the instructions, may cause harmful interference to radio communications.

However, there is no guarantee that interference will not occur in a particular installation. If this equipment does cause harmful interference to radio or television reception, which can be determined by turning the equipment off and on, the user is encouraged to try to correct the interference by one or more of the following measures:

- Reorient or relocate the receiving antenna.
- Increase the separation between the equipment and receiver.
- Connect the equipment into an outlet on a circuit different from that to which the receiver is connected.
- Consult the dealer or an experienced radio/TV technician for help.

This device complies with Part 15 of the FCC Rules. Operation is subject to the following two conditions: (1) this device may not cause harmful interference, and (2) this device must accept any interference received, including interference that may cause undesired operation.

**CAUTION**  
**RISK OF EXPLOSION IF BATTERY IS REPLACED**  
**BY AN INCORRECT TYPE.**  
**DISPOSE OF USED BATTERIES ACCORDING**  
**TO THE INSTRUCTIONS**



■ Correct Disposal of this product. This marking indicates that this product should not be disposed with other household wastes throughout the EU. To prevent possible harm to the environment or human health from uncontrolled waste disposal, recycle it responsibly to promote the sustainable reuse of material resources. To return your used device, please use the return and collection systems or contact the retailer where the product was purchased. They can take this product for environmental safe recycling.