

User Manual

Package contents

- Bluetooth Optical Mouse
- 2 AAA alkaline batteries
- User manual

Installation Guide

Step 1 : Installing batteries

Whenever new batteries are installed, make sure that they are fresh 1.5V AAA batteries.

A)Remove the battery cover.

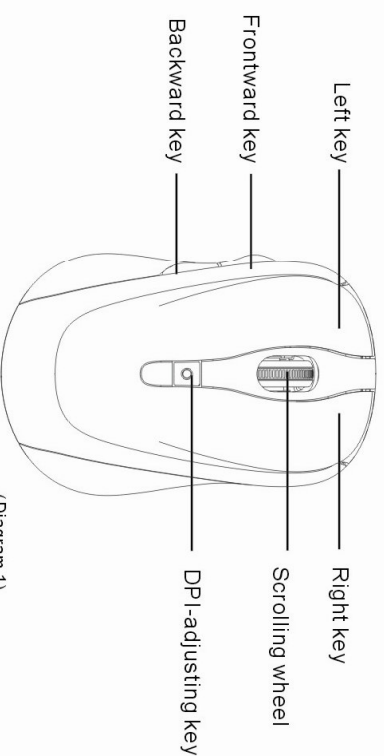
B)Insert two AAA batteries into the battery compartment, make sure to properly orient the positive (+) and negative (-) ends as specified by the marks in the battery compartment. Replace the battery cover and make sure it is locked.

C)Switch on the mouse. LED light will blink (Diagram 1).

Step 2: Connecting the Bluetooth mouse

Before you install the Bluetooth mouse, please make sure that your computer supports Bluetooth function, and finished the Bluetooth software installation. Software is available like Wincomm, IVT or the Microsoft built-in software.

Simultaneously press both Left and Right keys for 5 seconds, the LED light in "DPI-adjusting key" will shine, it's now searching the Bluetooth device. And please follow the below procedures to install the mouse.



(Diagram 1)

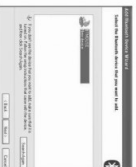
Installing procedures on Microsoft built-in software

1. Make sure that the Bluetooth function has been activated. Double click the Bluetooth icon on the Task Bar or in the Control Panel, click "Add a Bluetooth device".

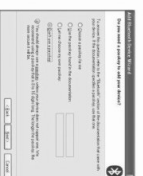
2. Select "My device is set up and ready to be found", click "Next".



3. Select Bluetooth mouse, click "Next".



4. Select "Don't use a passkey", click "Next" and then "Finish".



Note: If you use other Bluetooth software, the installing procedure may be similar. You need to try and understand it by yourself.

System requirements

1. Windows ME, 2000, XP or Vista
2. If your computer doesn't have built-in Bluetooth function, please make sure that you have a Bluetooth Dongle. Bluetooth Dongle is not included in this product.

(1) 15.21 statement:
changes or modifications not expressly approved by the party responsible for compliance could void the user's authority to operate the equipment.

This device complies with Part 15 of the FCC Rules. Operation is subject to the following two conditions: (1) this device may not cause harmful interference, and (2) this device must accept any interference received, including interference that may cause undesired operation.

Address: Tongsheng Office Building, Dalang Street, Baoan District, Shenzhen, China

ZIP: 518109

Tel: 0755-33669899

Fax: 0755-33668968

Http://www.newmen.com.cn