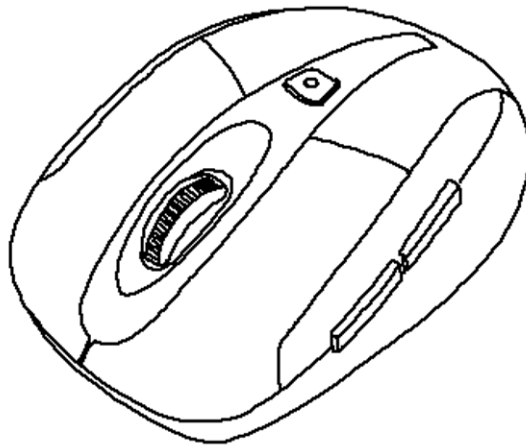




2.4 GHz Wireless Optical Nano Mouse



User Manual

**All brand name and trademarks are the property of their respective companies
Mac and Mac OS X are registered trademarks of Apple Inc.
Windows, Windows XP, Windows Vista, Windows 7 and Windows 8 are registered
trademarks of Microsoft Corporation in the United States and/or other countries.**

USER RECORD

To provide quality customer service and technical support, it is suggested that you keep the following information as well as your store receipt and this user manual.

Date of Purchase: _____

Model Number: _____

Product Rev Number (located below the UPC on the package): _____

FCC RADIATION NORM

FCC

This device complies with Part 15 of the FCC Rules. Operation is subject to the following two conditions : (1) this device may not cause harmful interference, and (2) this device must accept any interference received, including interference that may cause undesired operation.

FCC Compliance Statement

Warning: Changes or modifications to this unit not expressly approved by the party responsible for compliance could void the user's authority to operate the equipment.

NOTE: This equipment has been tested and found to comply with the limits for a Class B digital device, pursuant to Part 15 of the FCC Rules. These limits are designed to provide reasonable protection against harmful interference in a residential installation. This equipment generates, uses and can radiate radio frequency energy and, if not installed and used in accordance with the instructions, may cause harmful interference to radio communications.

However, there is no guarantee that interference will not occur in a particular installation. If this equipment does cause harmful interference to radio or television reception, which can be determined by turning the equipment off and on, the user is encouraged to try to correct the interference by one or more of the following measures:

- _ Reorient or relocate the receiving antenna.
- _ Increase the separation between the equipment and receiver.
- _ Connect the equipment into an outlet on a circuit different from that to which the receiver is connected.
- _ Consult the dealer or an experienced radio/TV technician for help.



CAUTION

The Federal Communications Commission warns the user that changes or modifications to the unit not expressly approved by the party responsible for compliance could void the user's authority to operate the equipment.

PACKAGE CONTENTS

Your new mouse will ship with the following items:

- 2.4GHz Wireless Optical Nano Mouse
- Nano Receiver
- 2 AAA Batteries
- User Manual
- Warranty Information

SYSTEM REQUIREMENTS

Please be sure that you meet all of the system requirements below to avoid difficulties during installation

Compatible with: PCs, Mac[®] computers, and Chromebook[™] notebook computers

Works with:

- Windows[®] XP, Windows[®] Vista ,Windows[®] 7 and Windows[®] 8 operating systems
- Mac OS X[®] 10.3 and above (Tilt-Wheel function is compatible with PCs only)
- An available USB port

SPECIFICATIONS

Your new mouse complies with the following specifications:

- USB Interface

Note: In order for the tilt-wheel function to work on your mouse you MUST download the setup software from the Gear Head website.

INSTALLING BATTERIES

To properly install batteries into your mouse, please follow the instructions below:

1. Remove the battery compartment cover from your mouse.



2. Install two AAA batteries into the battery compartment following the orientation guide in the battery bay.



3. Replace the battery compartment cover back onto your mouse until it locks securely.



INSTALLATION

For All Operating Systems

1. Make sure you have successfully installed the batteries into your mouse. Refer to the **Installing Batteries** section in this manual if necessary.
2. Pull out the Nano Receiver stowed in the bottom of your mouse.



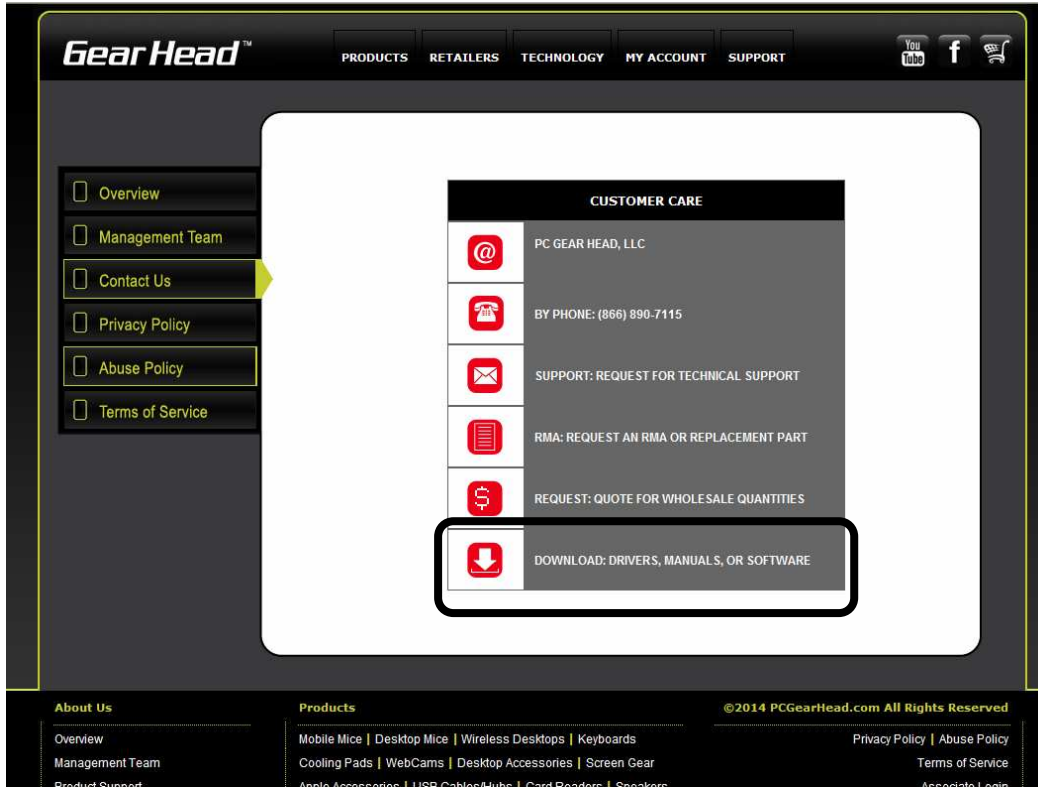
3. Turn on your computer and plug the Nano Receiver into an available USB port on your computer. (If you are not able to find a USB port on your computer, please refer to the user manual of your computer for more detail.) Your wireless optical mouse is now ready!



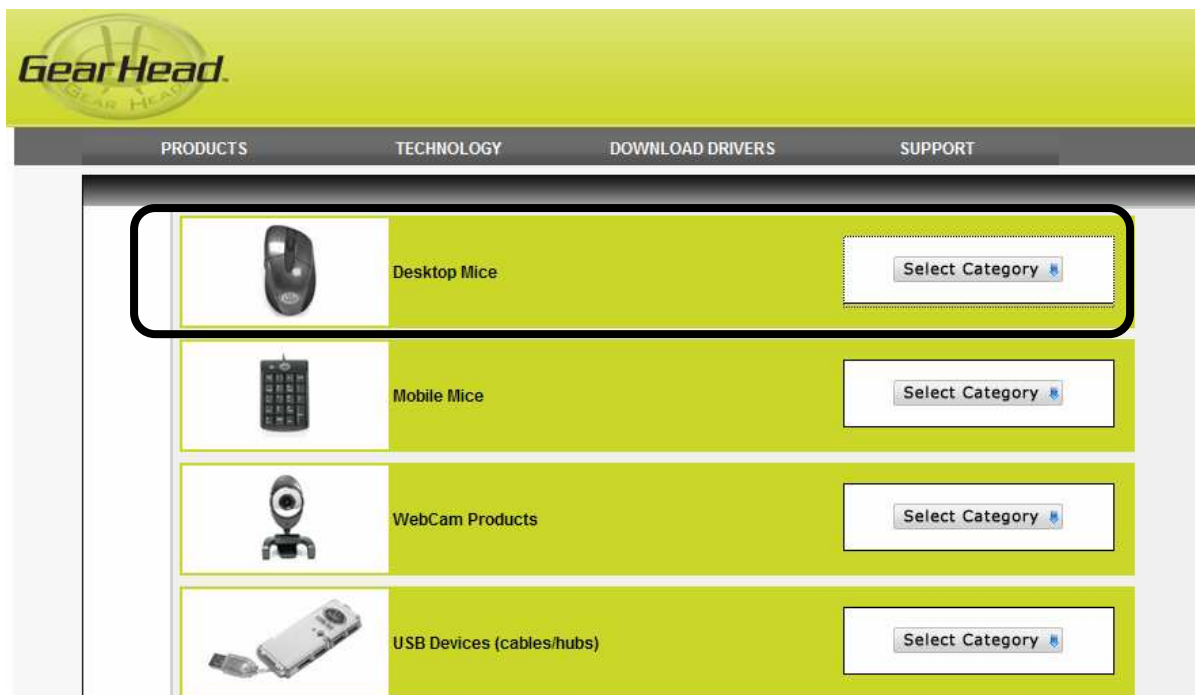
DOWNLOADING TILT-WHEEL SETUP SOFTWARE

In order for the tilt-wheel function to work on your mouse you **MUST** download the setup software from the Gear Head website.

1. Go to the Support page (<http://pcgearhead.com/support.php>) on the Gear Head website and click the **DOWNLOAD: DRIVERS, MANUALS, OR SOFTWARE** button.



2. Find **Desktop Mice** and click **Select Category**.



3. Find Model **MPT3000/ MPT4000** and click **get downloads....**

(NOTE: Please check the **FCC ID number** on the rating label which is located under the mouse. Then follow FCC ID number to download relevant software.)

FCC ID (A)

FCC ID (B)



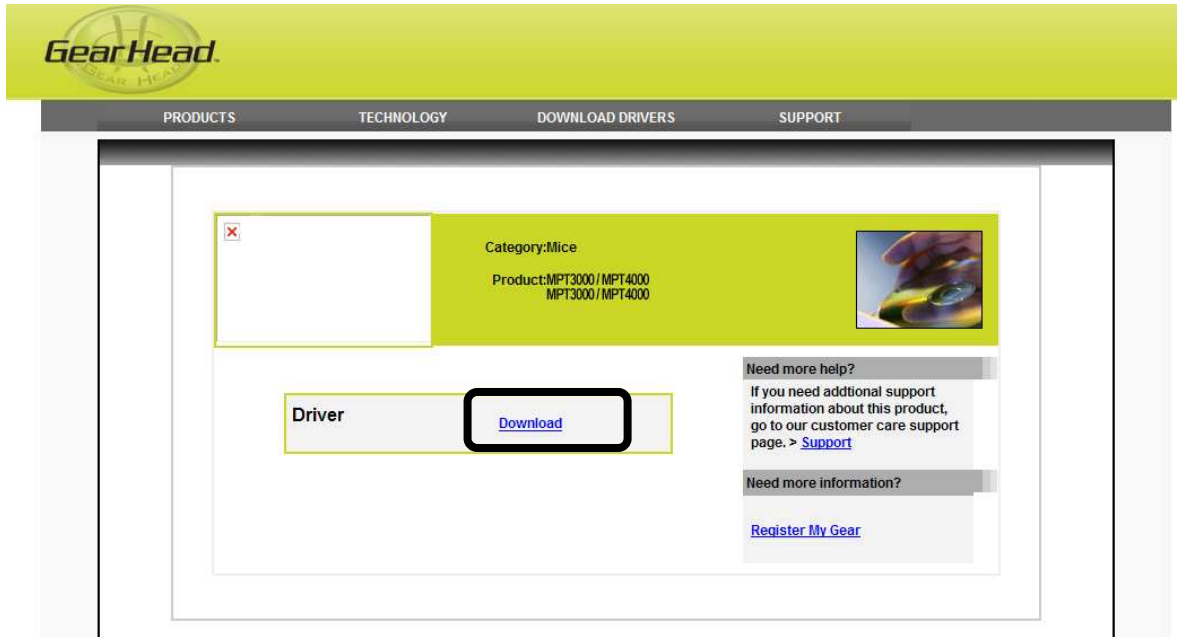
GearHead V4P-MS-148OR-C

PRODUCTS TECHNOLOGY DOWNLOAD DRIVERS SUPPORT

Product Number	Description	Download
BT9100RU	GH - Bluetooth Laser Mouse, 1600 dpi - Mac	get downloads...
BT9200M	Bluetooth Laser Mouse for Mac	get downloads...
KPCM4200W	GH - Wireless Keypad + Optical Mouse	get downloads...
LM3000RU	GH - Laser Wired Mouse	get downloads...
LM3500WU	GH - Laser Wireless Mouse	get downloads...
LM3600WU	2.4 GHz Wireless Laser Mouse	get downloads...
LM3750WSU	2.4 GHz Wireless Laser Tilt-Wheel Mouse	get downloads...
LM5000CWU	GH - Laser Wireless Mouse (Rechargeable)	get downloads...
LM6000U	Laser Wired Mouse (USB)	get downloads...
LM7000W	GH- Laser Wireless Mouse (OPP)	get downloads...
LM8000WR	GH - Laser Wireless Rechargeable	get downloads...
LMT3750RED	2.4GHz Wireless Laser Nano Mouse (Red)	get downloads...
MP2500PUR	Wireless Optical Mouse (Purple)	get downloads...
MP2950PUR	2.4GHz Wireless Optical Nano Mouse (Purple)<	get downloads...
A MPT3000 / MPT4000	MPT3100-MPT3500 & MPT4100	get downloads...
B MPT3000 / MPT4000	MPT3100-MPT3500 & MPT4100	get downloads...


V4P-MS-148OR-C

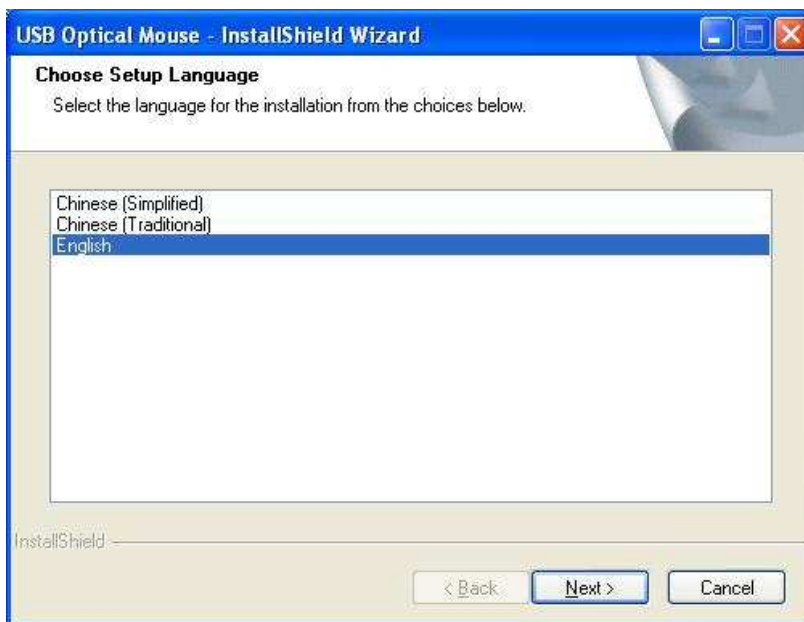
4. A pop-up window will appear to initiate the download; click **Download** to start downloading.



5. Follow the onscreen instructions to download the setup software.

INSTALLING THE SETUP SOFTWARE

1. Decompress the downloaded software and click the **Set Up** icon  to begin installation.
2. The **USB Optical Mouse - InstallShield Wizard** will appear on the desktop. Choose your installation language on the following screen and click **Next** to continue.


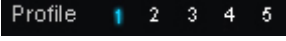
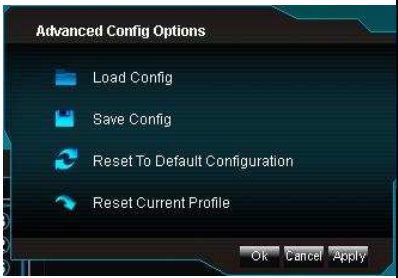




3. Follow the onscreen instructions to finish the software installation. Please restart your computer after the installation is finished.

USING THE SOFTWARE



Button Assignment	Advanced Functions	Single/Macro	You can assign any key function or key combination to a single button on your mouse.
<p>You can assign a function to any button of your mouse by selecting from the functions stored in the drop-down menu of each button. These are the 12 options:</p> <ul style="list-style-type: none"> - Click - Menu, - Universal Scrolling, - Double-click - Advanced Functions (see right for details) - Button 4 - Button 5 - Switch Profile - Cycle of Switch Profile - Pan Left 	<p>The screenshot shows the 'Advanced Function Input' dialog box. It contains the text: 'Advanced Function Input Press the keyboard key(s) to assign to this button. Then select "Apply".' Below this text are two buttons: 'Single Key' and 'Macro'. Underneath is a large empty text input field. At the bottom, there is a list of categories: 'Advanced Function', 'Basic Commands', 'Additional Commands', and 'Media Functions'. Each category has a 'Selection Function' button next to it. At the very bottom is an 'Insert Delay (60MS)' button.</p>	Basic Commands	The drop-down menu provides 9 basic word document software operations.
		Additional Commands	The drop-down menu provides 7 basic system operations.
		Media Functions	<p>The drop-down menu provides 7 basic media operation modes.</p> <p>Tip: Press and hold the DPI button on your mouse for 5 seconds and then it can be used to play/pause your media, while the horizontal tilt-wheel function can be used as volume up/down. To return to the normal mode, press the DPI button for 5 seconds again.</p>

<ul style="list-style-type: none"> - Pan Right - Button Off 	<p>Switch Profile</p>	<p>You can set the functions of your mouse buttons to go to a specified mouse configuration profile, every time that mouse button is clicked.</p> 
	<p>Cycle of Switch Profile</p>	<p>You can rotate between the 5 profiles you have set by clicking the assigned mouse button. The 5 configurations can be set and stored using the software.</p> 
<p>Advanced Mousewheel Options</p>	<p>You can assign a function to the vertical (up or down) operation of your tilt-wheel by selecting from the functions stored in the drop-down menu: Click, Menu, Double-click, Advanced Functions, Scroll Up, and Scroll Down are available.</p>	
<p>Config Save/Load Settings</p> <p>Click Save/Load Settings to enter the following screen and perform one of four functions.</p> 	<p>Load Config</p>	<p>Retrieve a configuration previously saved to your computer.</p>
	<p>Save Config</p>	<p>After assigning custom functions to your mouse buttons, you can save up to 5 different configurations.</p> 
	<p>Reset to Default Configuration</p>	
	<p>Reset Current Profile</p>	<p>Revert all settings back to the default configuration.</p> <p>Change the current settings shown on the software screen back to the default settings.</p>
	<p>You can store up to 5 different configurations with this software. Select a number then change the configuration in the Button Assignment and Advanced Mousewheel Options menu. Next click Ok under the Advance Config Options menu to save your settings to that profile.</p>	

CHANGING THE SPEED OF YOUR MOUSE

To adjust the speed of the cursor or the scroll button features on your computer, follow the instructions below:

NOTE: The screenshots show in this section are for demonstration only and your screen may look slightly different but with similar options.

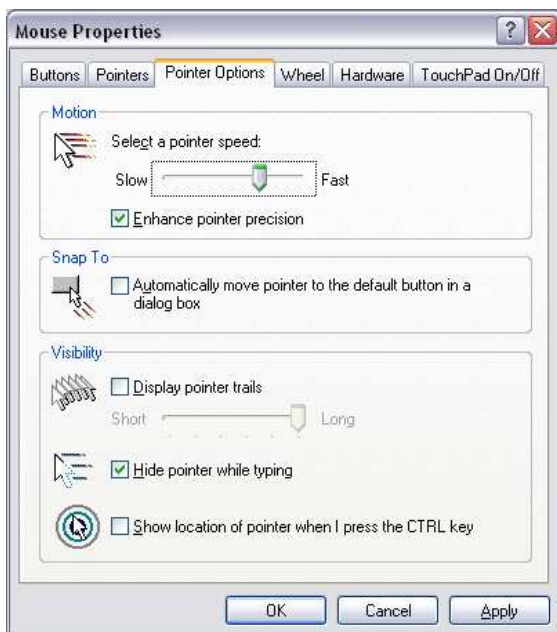
For Windows® Operating Systems

Open the **Control Panel**. Double-click the **Mouse** icon to open the **Mouse Properties** screen and then select **Pointer Options**. Adjust the settings to your liking and select **Apply** then **OK**.

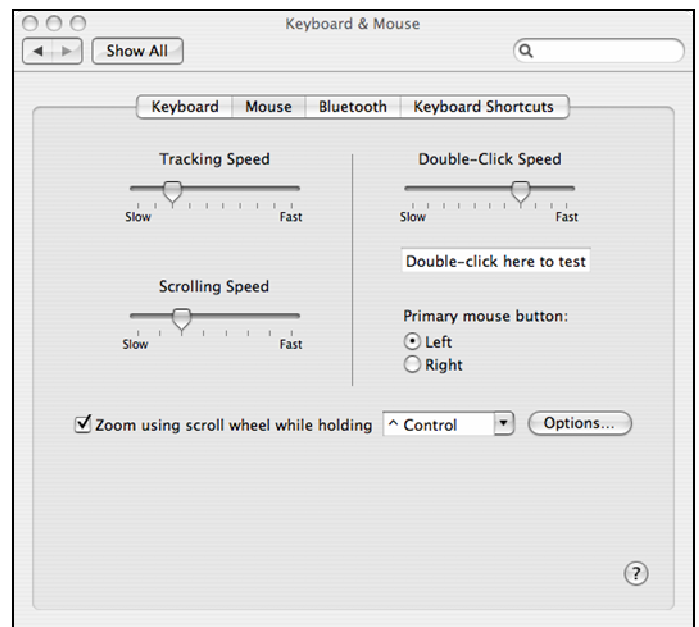
For Mac OS X® 10.3 and Above

Open **System Preferences**. At the **System Preferences** screen, click the **Keyboard & Mouse** icon. Select the **Mouse** tab and make your changes.

Windows® Operating Systems



Mac OS X® 10.3 and Above





WARRANTY INFORMATION



Gear Head, LLC warrants that this product shall be free from defects in materials and workmanship for the reasonable lifetime of the product. If the product is defective, Gear Head, LLC's sole obligation under this warranty shall be at its election, subject to the terms of this warranty, to repair or replace any parts deemed defective. This warranty is for the exclusive benefit of the original purchaser and is not assignable or transferable. THIS WARRANTY IS MADE IN LIEU OF ALL OTHER WARRANTIES, EXPRESS OR IMPLIED, AND ANY IMPLIED WARRANTIES, INCLUDING THE IMPLIED WARRANTIES OF MERCHANTABILITY AND FITNESS FOR A PARTICULAR PURPOSE, ARE LIMITED TO THE TERMS OF THIS WARRANTY, UNLESS OTHERWISE PROHIBITED BY LAW.

Exclusions

To the fullest extent permitted by law, Gear Head, LLC expressly disclaims and excludes from this warranty any liability for damages, including but not limited to general, special, indirect, incidental, consequential, aggravated, punitive or exemplary damages, and economic loss (even if Gear Head™ is informed of their possibility), third party claims against you, including for any loss or damages, and claims or damages related to loss of, or, damage to, your records or data. This warranty does not apply to any product the exterior of which has been damaged or defaced. This warranty will be voided by misuse, improper physical environment, improper repair, acts of God, war or terror, commercial use, and improper service, operation or handling.

Technical Support

Please access Technical Support on the web or contact our technicians at info@pcgearhead.com for help.

www.pcgearhead.com

Gear Head™ provides phone support, 866-890-7115, Monday - Friday from 9:00 am – 5:30 pm Eastern Time. Before calling, please make sure you have available the Model # (located on the front page of your User Manual) and information regarding your computer's operating system.

Return Merchandise for Service

Any claim under this warranty must be made in writing to Gear Head, LLC, within 30 days after the owner discovers the circumstances giving rise to any such claim, and must include a copy of this warranty document, a receipt or copy of your invoice marked with the date of purchase, and the original packaging. You may contact us on the web at www.pcgearhead.com or by emailing us at info@pcgearhead.com to receive service or request a return service authorization.