

Table of Contents

Important Safety Messages & Warnings	2
FCC Note	3
Care and Maintenance	3
Camera Features	4
Monitor Features	5
Child Monitor Operation and Channel Settings	6
Reception	6
Camera Location and Set Up	6
Wall Mount Installation	7
Table Top Set Up	8
Monitor Location and Set Up	8
Installing the Batteries	8
Monitor Operation	9
System Use	9
Television Use	9
Problems and Solutions Guide	10
Warranty Information	11

Important Safety Messages



TO REDUCE THE RISK OF FIRE OR ELECTRICAL SHOCK, DO NOT EXPOSE THIS PRODUCT TO WATER OR MOISTURE. NEVER ATTEMPT TO OPEN THE CASE OF EITHER THE CAMERA OR MONITOR. THIS IS DANGEROUS AND WILL VOID THE WARRANTY.

NO SERVICEABLE PARTS INSIDE. REFER SERVICING TO SAFETY 1ST CONSUMER RELATIONS (800) 723-3065. IN CANADA CALL (800) 721-3389.

1. Before using your Safety 1st 900 MHz In Sight Hand-Held TV-Video Monitor:
 - Read and follow all instructions carefully.
 - Read and observe all warnings on the product and in this instruction booklet.
2. To prevent entanglement with the adapter cord, **NEVER** place the Camera in or near a crib or playpen. **DO NOT** place the Camera on any surface or mount it on any wall where the Camera or its AC adapter cord are within reach of children.

3. **ALWAYS KEEP THE CAMERA, TV/MONITOR AND AC ADAPTERS OUT OF REACH OF CHILDREN.**
4. This product is not intended to be used as a medical monitor and its use should not replace adult supervision. It is important that an adult stay within the viewing range of the 900 MHz Hand-Held Monitor and Television at all times during use.
5. It is essential to check reception regularly. Please see the Reception section for complete instructions.
6. The Camera and Monitor are intended for indoor use only.
7. **NEVER** use the Camera or Monitor near water. For example, do not use near a bathtub, bathroom sink, laundry tub, kitchen sink, in a wet basement, etc.
8. Always unplug the AC adapters from wall outlets during long periods of non-use.
9. Position the Camera, Monitor and AC adapters to allow adequate ventilation and prevent these components from overheating.
10. To prevent overheating, keep the Camera, Monitor and AC adapters away from heat sources such as radiators, heat registers, stoves or other appliances (including amplifiers) which produce heat. Also keep these components out of direct sunlight.
11. Use only the AC adapters provided. Use of any other adapters may damage the Camera and/or Monitor. Plug the AC adapters into standard household current only (120V AC outlet)! To prevent entanglement and overheating, **DO NOT** use extension cords.
12. The AC adapters may become slightly warm to the touch during operation. This is normal.
13. Position the AC adapter cords so that they are not walked on or pinched by items placed upon or against them, paying particular attention to cords at AC adapter plugs, wall plugs, and the point at which the cords attach to the Camera and Monitor.
14. This product should be serviced only by qualified service personnel at Safety 1st when:
 - An AC adapter or its plug is damaged,
 - The Camera or Monitor have fallen,
 - Liquid has spilled into the Camera or Monitor, or
 - The Camera or Monitor do not appear to operate normally or exhibit a marked change in performance
15. **DO NOT** attempt to service this product beyond that described in the Problems and Solutions Guide at the end of these instructions. All other servicing should be referred to qualified personnel at Safety 1st.
16. Retain these instructions for future reference.

NOTE: The LED's on the Camera emit IR (Infra Red) light that is not harmful.

FCC Note

NOTE: This equipment has been tested and found to comply with the limits for a Class B digital device, pursuant to Part 15 of the FCC Rules. These limits are designed to provide reasonable protection against harmful interference in a residential installation. This equipment generates, uses and can radiate radio frequency energy and, if not installed and used according to the instructions, may cause harmful interference to radio communications. However, there is no guarantee that interference will not occur in a particular installation. If this equipment does cause harmful interference to radio or television reception, which can be determined by turning the equipment off and on, the user is encouraged to try to correct the interference by one or more of the following measures:

- Re-orient or relocate the receiving antenna,
- Increase the separation between the equipment and receiver,
- Connect the equipment into an outlet on a circuit different from that to which the receiver is connected,
- Consult the dealer or an experienced radio/TV technician for help.

This device complies with Part 15 of the FCC Rules. Operation is subject to the following two conditions: (1) This device may not cause harmful interference, and (2) this device must accept any interference received, including interference that may cause undesired operation.

CAUTION: Changes or modifications to this unit not expressly approved by Safety 1st, Inc. could void the user's authority to use the equipment.

Care and Maintenance

The 900 MHz Hand-Held Monitor and Television is intended for indoor use only. Do not place the Camera where it will receive direct sunlight indoors. Outdoor use may damage the Camera and/or Monitor.

The outer surface of the Camera and Monitor can be cleaned with a cloth **LIGHTLY** dampened with water or a mild cleaning solution. **Do not immerse any part of the 900 MHz Hand-Held Monitor and Television in water.** As with any other electronic product, care should be exercised so as not to drop the product or physically damage it. Electronic components may be affected by such abuse.

Requirements:

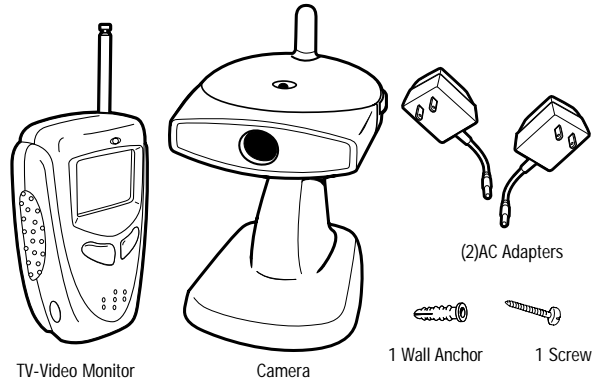
Tools needed for wall mounting of Camera:

Drill, 3/16" (4.8mm) drill bit, hammer, and Phillips head screwdriver (not included).

4 "AA" alkaline batteries (not included) for TV-Video Monitor.

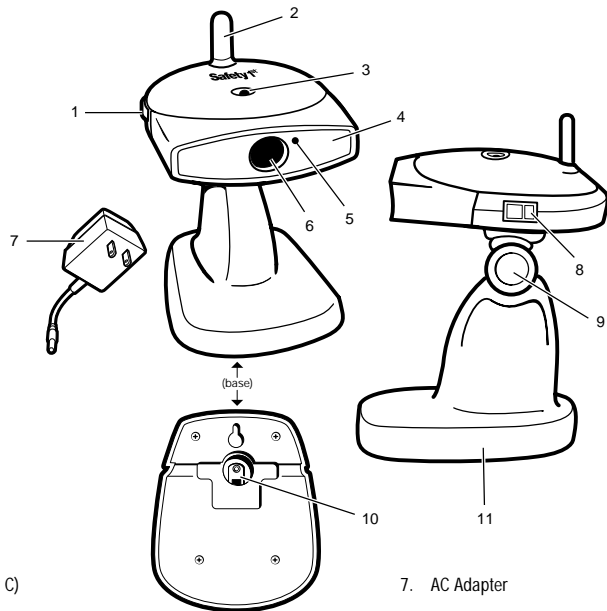
Adult assembly is required.

Contents



Features and Components

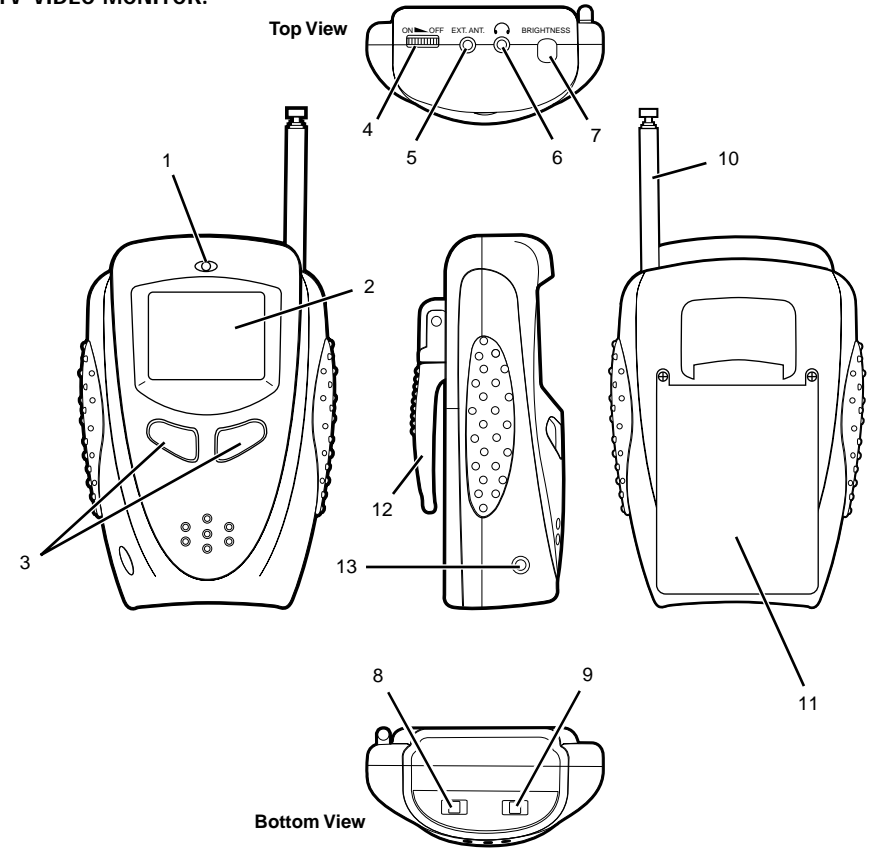
CAMERA:



1. Channel Switch (A, B, or C)
2. Antenna
3. Power Indicator
4. Night Vision LED's: Allows Camera to automatically adjust to darkened room
5. Microphone
6. Camera Lens

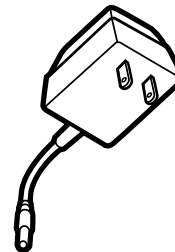
7. AC Adapter
8. ON/OFF Switch
9. Tilt Adjustment Knob. Controls up and down tilt of camera for optimal viewing
10. AC Adapter Jack
11. Base/Wall Mount

TV-VIDEO MONITOR:



1. Power On (green) / Low Battery (red) LED Light
2. 2" Color TFT Active Matrix Display Screen
3. TV Tuning / Brightness Adjuster Buttons
4. On / Volume Control
5. External Antenna Jack
6. Earphone Jack
7. Brightness / Tint Button
8. Channel Selector
9. Mode Switch (TV/Camera/Audio)
10. TV-Video Antenna
11. Battery Compartment
12. Belt Clip
13. AC Adapter Jack

AC ADAPTER:



The AC Adapters are a low voltage power source that allows you to use your household electricity to run the 900 MHz Hand-Held Monitor and Television. The separate AC Adapters connect to the AC Adapter Jack in the Monitor and Camera . Both plug into any standard 110 volt electrical outlet in your home.

CAUTION: These adapters were made with a specific design for Safety 1st 900 MHz In Sight Hand-Held TV-Video Monitor. They cannot be used with any other appliance. Never use a different type of adapter with this monitor.

Operating Your 900 MHz Hand-Held Monitor and Television

Always remember that you are using public airwaves when you use the Safety 1st 900 MHz Hand-Held Monitor and Television. Sound and video may be broadcast to other receiving devices. Conversations, even from rooms near the Camera, may be broadcast as well.

CAUTION: To protect your privacy, always turn the Camera off when not in use.

It is possible for the Monitor to pick up sounds or display interference from other signal producing devices including other audio or video monitors which broadcast in the 900 MHz range. To minimize this potential problem, three independent channels have been provided for your use.

If you experience interference while using one channel setting, simply switch the Camera and Monitor to another channel. Selecting a channel is usually a one-time adjustment. If interference persists on all channels, please refer to the Problems and Solutions Guide at the end of these instructions.

Monitor Reception

Before installing Wall Mount Screw, it is very important to test the video and sound reception of the 900 MHz Hand-Held Monitor and Television at the following times:

- Before initial use
- Regularly during use
- Whenever you change the location of the Camera or Monitor

To Test: It is easiest for two adults to test reception. One adult should be present in the room with the Camera, while the other adult moves the Monitor to several different locations throughout the house. As with any audio equipment, feedback or a high pitched shrill sound may occur if the Camera and Monitor are too close to each other. It is important to test sound quality and video reception in each location in which you intend to use the 900 MHz Hand-Held Monitor and Television.

To test the video reception, the adult present in the room with the Camera should place the Camera in the most appropriate location for monitoring the baby (on a table top, dresser, or against a wall). Direct the Camera lens toward the area you want to see on the Monitor screen. (While testing, it may be helpful to place an object, such as a doll or stuffed animal, in the area you want to be viewing on the monitor.) Check the video reception on the Monitor screen. Adjust the quality of the picture using the brightness adjustment knob on the back of the Monitor. Make sure you check reception in all areas in which you intend to use both the Monitor and Camera. The Camera has an Auto Sensor to allow the Camera to see clearly, automatically, even in a completely darkened room. In the Night Vision mode, the Picture will be black and white.

To test sound reception quality, have the adult present in the room with the Camera speak in both a whisper and a normal conversation level at the location of the child being monitored. During sound testing, keep in mind the volume of your child's sounds and test accordingly. The Monitor must be placed far enough away from the Camera to prevent feedback noise from occurring. Usually this means placing the Monitor in a different room than the Camera is in.

Camera Location and Set Up

You can position and adjust the Camera in a variety of ways to provide the best view of your baby at all times. The Camera can be easily mounted on a wall, or it can be simply placed on a stable, flat surface, such as a dresser, table top or shelving unit.

IMPORTANT: Once you have selected a location for mounting, **TEST** the reception of the 900 MHz In Sight Hand-Held TV-Video Monitor **BEFORE INSTALLING** any wall mount screws. If interference or other problems occur, please refer to the Problems and Solutions Guide at the end of these instructions.

WARNING:

In selecting a location to mount the Camera, keep the following things in mind:

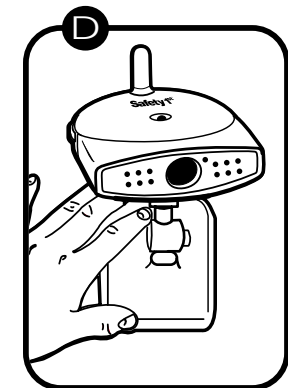
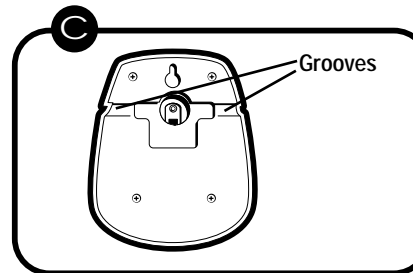
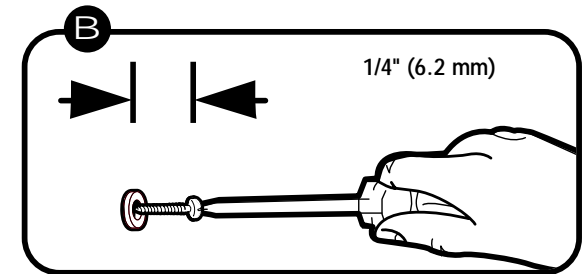
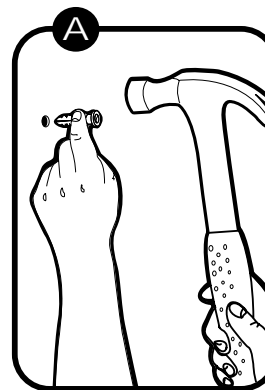
- To prevent entanglement, only mount the Camera in a location where it and its A/C adapter cord are **OUT OF REACH OF CHILDREN**.
- For best viewing, mount the Camera approximately 6' (2m) away from the child.
- Mount the Camera in a location where the camera lens will have an unobstructed view. Use the tilt and swivel adjustments to properly aim the Camera.
- Allow adequate ventilation of the Camera when mounted on a wall. **DO NOT** mount the Camera directly above heating vents, other heat producing sources or in direct sunlight.
- Make certain that the Camera will be mounted so that the AC adapter cord will reach an outlet. To prevent entanglement and overheating, **NEVER** use an extension cord.

Camera Wall Mount Installation

- Using a 3/16" (4.8 mm) drill bit on an electric drill, drill a hole in the wall.
- Place the Wall Anchor in the drilled hole. Tap gently with a hammer on the Wall Anchor until the end of the Wall Anchor is even or flush with the surface of the wall as shown in **Figure A**.
- Place the Screw in the Wall Anchor and tighten until there is a 1/4" (6.2 mm) gap between the wall and the Screw head as shown in **Figure B**.

Mounting the Camera on the Wall

- Unwrap and fully extend the AC Adapter cord.
NOTE: Two AC Adapters are included in the 900 MHz In Sight Hand-Held TV-Video Monitor. Use the Adapter with the longer cord with the Camera. Use only the AC Adapters included with the 900 MHz In Sight Hand-Held TV-Video Monitor.
- Plug the jack on the Camera's AC Adapter cord into the AC Adapter jack on the bottom of the Camera.
- Hold the Camera so the underside of the base/wall mount faces you.
- Insert the AC Adapter cord into the groove on the underside of the Camera base/wall mount as shown in **Figure C**. Make certain the AC Adapter cord stays in the groove as you place the Camera on the wall mount Screw.
- Slide the Camera base/wall mount down on the Screw to secure it to the wall as shown in **Figure D**.
NOTE: If the Camera does not slip easily onto the wall mount Screw, remove the Camera from the wall and slightly loosen the Screw.
- Plug AC Adapter into a standard wall outlet.
- Wrap up and secure any excess AC Adapter cord.



Camera Table Top Set Up

The Camera can be positioned on any stationary flat surface, such as a dresser, table top or shelving unit. Position the camera approximately 6' (2M) away from the desired object.

WARNING: TO PREVENT THE RISK OF ENTANGLEMENT, NEVER PLACE THE CAMERA IN CRIB OR PLAYPEN. ALWAYS POSITION THE CAMERA AND ITS AC ADAPTER CORD OUT OF CHILD'S REACH.

NOTE: Use only the AC adapters included with the 900 MHz In Sight Hand-Held TV-Video Monitor.

- Unwrap and fully extend the AC adapter cord.
- Plug AC Adapter into a standard wall outlet.
- Wrap up and secure any excess AC adapter cord.

Monitor Set Up

The portable Monitor operates by use of 4 AA alkaline batteries (not included) or the AC Adapter cord included with the 900 MHz In Sight Hand-Held TV-Video Monitor for AC Monitor power.

REMEMBER: Use only the AC Adapter included with the 900 MHz In Sight Hand-Held TV-Video Monitor for power.

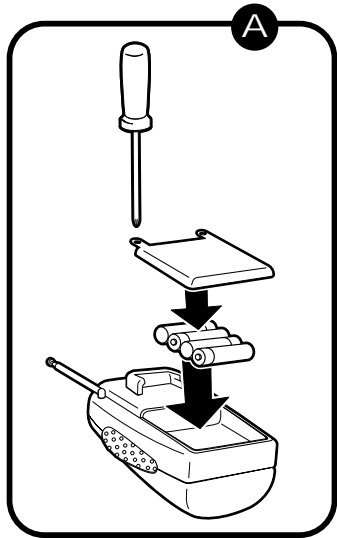
IMPORTANT NOTES:

- Keep the Monitor out of reach of children.
- Keep the Monitor upright for best reception.

Installing the Batteries

WARNING

- Do not submerge any part of TV/Video Monitor in water.
- Remove batteries when stored for long periods of non-use.
- Remove spent batteries promptly.
- Rechargeable batteries may be used but must not be recharged in the unit.
- Only an adult should charge rechargeable batteries.
- Non-rechargeable batteries must not be recharged.
- DO NOT short circuit supply terminals.
- Insert batteries oriented for the correct polarity (as shown in battery compartment).



STEP 1 Locate the battery compartment door on the back of the TV/Monitor, and unscrew the battery door in the direction of the arrow to remove as shown in Figure A.

STEP 2 Install 4 AA alkaline batteries (not included) into the battery compartment as shown. Ensure the (+) and (-) symbols match those shown in the battery compartment.

STEP 3 Re-align battery door and screw into position.

NOTE: The TV/Monitor will not work in battery mode if batteries are not installed properly.

After several hours of continuous use, the Power On/Low Battery LED Light may turn solid red, indicating that the batteries need to be replaced. Please follow instructions noted above for the installation of new batteries.

NOTE: We recommend using household electrical power when possible to conserve battery power.

Camera Operation

- Set Camera and Monitor to the same channel.
- Slide the ON/OFF switch on the top of the Camera to the "ON" position.

To Adjust:

- Turn the tilt adjustment knob counter-clockwise just enough to loosen the camera. Move the camera up or down to the desired position and tighten the camera in place by turning the tilt adjustment knob clockwise. DO NOT OVER TIGHTEN.
- Swivel the camera from side-to-side to obtain desired position.

NOTE: Camera will turn approximately 180°. Do not attempt to turn it past 180°.

DO NOT attempt to adjust the small antenna on Camera or Monitor.

Monitor Operation

- Place the Monitor where you can see and hear it.
- To use household power, unwrap and fully extend the AC adapter cord, and plug the jack on the Monitor's AC Adapter cord into the AC adapter jack (DC 12V IN) on the side of the Monitor. Then plug the AC adapter into a standard wall outlet. Be certain to wrap up and secure any excess AC adapter cord.
- Turn the Monitor "ON" by:
 - Sliding the Mode Switch to Camera.
 - Sliding the channel switch to either A, B or C to match the camera setting.
- Adjust the volume rotary dial to a comfortable sound level.
- If you experience interference switch both the Camera and the Monitor to another channel using the Channel Selector.

To Adjust Brightness and Tint:

- To adjust brightness, press the Brightness / Tint Button on top of the TV-Video Monitor. Then use the TV Tuning / Brightness Adjuster Buttons to make the picture lighter or darker as needed.
- To adjust tint, press the Brightness / Tint Button twice. Then use the TV Tuning / Brightness Adjuster Buttons to change the tint as needed.

Note: The Camera has Night Vision LED's that allow the Camera to automatically adjust to a darkened room. The Monitor will automatically switch to black and white reception at this time, providing you with a clear view of baby at night.

Using the Audio Only Feature

The Audio Only feature allows the Monitor to be used without the picture in a sound only mode. To use the Audio Only feature, set the Mode Switch on the bottom of the Monitor to "AUDIO". This will allow the Monitor to receive sound only without picture.

Using the Monitor as a Television

1. Switch the TV/CAMERA/AUDIO mode to TV.
2. Tune the TV to the desired station using the TV Tuning / Brightness Adjuster Buttons. You can either depress the Buttons quickly to move through the channels one at a time, or hold the Button down to scroll through the channels.
3. Adjust volume.
4. Adjust the telescoping antenna for best picture.

Troubleshooting

Problem	Possible Cause	Solution
Camera's power indicator light does not light	Camera is not turned "ON" Power is turned off	Slide the ON/OFF switch to the "ON" position Make certain house fuses and circuit breakers are on Make certain that any light switches that control the power flow to the wall outlet are on
	AC Adapter not properly connected	Check AC Adapter jack-to-socket and plug-to-outlet connections
Monitor screen does not illuminate and no sound	Monitor is not turned "ON" for video or television use	Turn the Monitor on. Slide Mode Switch to Camera for Monitor use or to TV for television use. May be in Audio Only mode
	Batteries may be dead	Replace batteries, 4AA
	Power is turned off	Make certain house fuses and circuit breakers are on Make certain that any light switches that control the power flow to the wall outlet are on
	AC Adapter not properly connected	Check AC Adapter jack-to-socket and plug-to-outlet connections. Be certain it is plugged into the AC jack (DC 12V IN)
No sound or picture	Channel switches are not on the same setting (A, B, C)	Check the channel switches on the Camera and the Monitor to confirm they are on the same channel (A, B, C)
	Signal interference due to other Monitors, cordless or cellular telephones, etc	Change the channel setting on both the Camera and the Monitor Turn both the TV and Camera off. Wait a moment and turn them back on
Sound, but no picture	In TV Mode, may need to change channels	Use TV Tuning/Brightness Adjuster Buttons to tune the television.
	In Monitor Mode, may need to adjust brightness	Press Brightness Button to activate. Then use TV Tuning/Brightness Adjuster Buttons to adjust brightness as needed
	Camera or Monitor near metal concentration	Test reception by moving the Monitor closer to the Camera or by moving the Camera and/or Monitor to different locations throughout the house. Relocate the Camera and/or Monitor

Problem	Possible Cause	Solution
Sound, but no picture (continued)	Monitor is set to "Audio" Signal interference due to other nursery monitor, cordless telephones, etc.	Adjust switch to "TV" or "Camera" mode Test reception by moving the Camera and/or Monitor to different locations throughout the house. Relocate the Camera and/or Monitor
Picture, but no sound	Volume not turned up Out of range	Adjust the volume control on the Monitor. Change channel setting to both the Camera and Monitor Bring Camera unit closer to Monitor
Picture flickers in low light	Object too close to Camera Camera or Monitor near metal concentration Signal interference due to other monitors, cordless or cellular telephones, etc.	Remove objects that are too close to the Camera or move the Camera/Monitor Test reception by moving Camera and/or Monitor to different locations throughout the house Change the channel setting on the Camera and Monitor Identify and eliminate the source of interference
Audio feedback (squealing)	Monitor is too close to the Camera Volume is set too high	Move the Monitor further away from the Camera Lower the volume on the Monitor
Dark picture at night	Night Vision LED's not functioning properly	With room lights off, check Camera to be certain that all Night Vision LED's are glowing red if not, contact the Consumer Relations Department at Safety 1st

Warranty Information

ONE (1) YEAR LIMITED WARRANTY

Safety 1st, Inc., warrants to the original owner of this product that the Nursery Monitor is free from defects in materials and workmanship for a period of one (1) year from the date of the original purchase. If this monitor fails to function when used as directed under normal conditions, within the one (1) year period, Safety 1st will either repair or replace the product at our option, free of charge, when it is returned complete and in its original packaging, prepaid postage, and insured to Safety 1st Consumer Relations Department (see appropriate address on next page). Product must be accompanied by a proof of purchase, either a bill of sale, receipted invoice, or other proof that the monitor is within the warranty period. Safety 1st will bear the cost of repairing or replacing the product and shipping it back to you.

This warranty does not apply to a Nursery Monitor that has been damaged as a result of improper maintenance, accidents, improper voltage supply or other misuse. The warranty is also void if the owner repairs or modifies the product in any way. Safety 1st is not liable for any incidental or consequential damages with regard to this product. The warranty also excludes any liability other than what is stated above. No other warranties are given.

LEGAL RIGHTS VARY FROM STATE TO STATE. SOME STATES DO NOT ALLOW THE EXCLUSION OR LIMITATION OF INCIDENTAL OR CONSEQUENTIAL DAMAGES, SO THE ABOVE LIMITATIONS MAY NOT APPLY TO YOU.

IMPORTANT NOTE: ONLY USE THE ADAPTERS SUPPLIED FOR THIS NURSERY MONITOR.
USE OF OTHER ADAPTERS WILL VOID THIS WARRANTY.

IMPORTANT!

Please do not return this product to the store!
Your questions and comments are important to us!

Thank you for purchasing this quality product from Safety 1st. We are confident you will be pleased with its many features and performance. If you are having any problems assembling, installing, or using this product, please call us. We will be very happy to answer any questions that you may have. Many times there is a simple solution to any problem that may occur. Talking to us directly will be convenient and save you time.

Call our Consumer Relations Department toll-free at (800) 723-3065;
in Canada call (800) 721-3389
from 9:00 am to 5:00 pm (EST) Monday - Friday.
We will gladly answer any and all of your questions about this product.

If you have any questions or comments, please call our toll free Consumer Relations number. If you are not completely satisfied, please return with proof of purchase to:

Safety 1st Inc., 45 Dan Road, Canton, MA 02021 USA 800-723-3065

Safety 1st Canada Inc., 84 rue Deslauriers, Ville St-Laurent, Quebec H4N 1X1 Canada 800-721-3389

Safety 1st Europe Ltd., Isopad House, Shenley Road, Borehamwood, Hertfordshire WD61TE UK +44(0)20 8236 0707

Made in CHINA to Safety 1st quality specifications. ©2000 Safety 1st, Inc.

www.safety1st.com

Styles and colors may vary

4/00

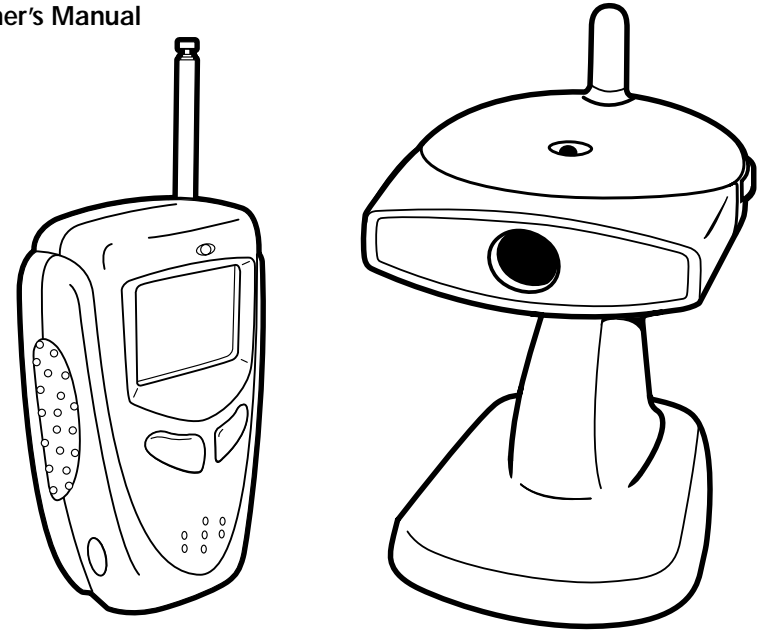
Safety 1st

Safety 1st

900 MHz Hand-Held Monitor and Television Television and Baby Monitor in one!

No. 48020

Owner's Manual



Thank you for purchasing the Safety 1st 900 MHz Hand-Held Monitor and Television. This extraordinarily versatile, state-of-the-art system features full-color viewing when used as a monitor during the day. At night, Infra Red LED's provide you with a clear black and white image of baby in a darkened room. The 900 MHz Hand-Held Monitor and Television can also be used as a full-color TV, for years of added use. This unique monitor also features 3 channel selections for optimal performance as well 900MHz RF technology for superior clarity and additional privacy. Both the Camera and the Video Monitor/TV are AC powered for use with convenient household electricity, and the Monitor/TV can also be powered with 4 AA alkaline batteries (not included) for additional portability.

We are sure that you will find the 900 MHz Hand-Held Monitor and Television convenient and easy to use. To ensure that you benefit from all of the great features that your monitor offers, and to make sure that you use it properly, we urge you to:

Please read all instructions carefully before using this product. Keep these instructions for future reference. If you have any questions, please call our Consumer Relations number at (800)723-3065. In Canada call (800)721-3389.

CAUTION:

- THE 900 MHz HAND-HELD MONITOR AND TELEVISION IS NOT INTENDED TO REPLACE RESPONSIBLE AND PROPER PARENTAL SUPERVISION.
- YOU SHOULD CHECK YOUR CHILD'S ACTIVITY AT REGULAR INTERVALS AS THIS MONITOR WILL NOT ALERT PARENTS TO THE SILENT ACTIVITIES OF A CHILD.