



LumiSound 900 MHz Audio Monitor with Rechargeable Battery

BC

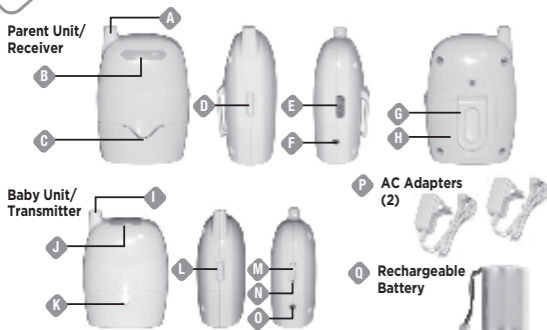
Thank you for purchasing a Safety 1st product. We are not only about safety, we're also about your satisfaction. If you have any questions or comments, please call our Consumer Relations department at 1-800-544-1108 or e-mail us at consumer@safety1st.com

Please read the following instructions and warnings carefully. Keep these instructions for future reference.
Tool needed: Phillips Head Screwdriver (not included)

WARNING!

Strangulation Hazard - Children have STRANGLED in cords. Keep cords out of reach of children more than 3 feet (0.9 m) away.

Features & Components



- | | |
|--|----------------------------------|
| Parent Unit (Receiver) | Baby Unit (Transmitter) |
| A Antenna | I Antenna |
| B Sound Lights | J Night Light Activation |
| C Speaker | K Microphone |
| D Channel Select Switch (A/B) | L Channel Select Switch (A/B) |
| E On/Off Power & Volume Dial | M Power On Switch |
| F AC Adapter Jack | N Power On Indicator (Green LED) |
| G Belt Clip | O AC Adapter Jack |
| H Battery Compartment (for rechargeable battery, included) | P AC Adapters (2) |
| | Q Rechargeable Battery |

Battery Installation & Use

CAUTION:

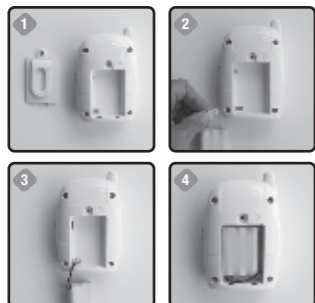
- When using batteries, check batteries regularly. DO NOT use audio monitor system in portable mode when batteries are low.
- Battery Pack Must Be Recycled or Disposed of Properly.
- Caution: Use only rechargeable batteries supplied. Do not use alkaline non-rechargeable batteries.
- Do not submerge any part of the product in water.
- Remove batteries when stored for long periods of non-use.
- Unplug power cord before replacing batteries.
- Do not mix old batteries with new.
- Do not mix alkaline, standard, (carbon zinc), or rechargeable batteries.
- Use only the adapters supplied with this product. Incorrect adapter polarity or voltage can seriously damage the product.
- There is a risk of explosion if the batteries are replaced by and incorrect type.
- Check that all contact surfaces are clean and bright before installing batteries.



BATTERY INSTALLATION:

Tools required: Phillips Head Screwdriver (not included) & Rechargeable Battery Pack (included).

- Unscrew battery cover and remove from Parent Unit (Figure 1).
- Align connectors of the Parent Unit and rechargeable battery pack (Figure 2).
- Place rechargeable battery pack inside Parent Unit (Figures 3 & 4).
- Secure battery cover with its screw.



Important!

TERMS USED IN WARNINGS: The term "Receiver" corresponds to "Parents Unit" and the term "Transmitter" correspond to "Baby's Unit" in the rest of the instruction booklet.

WARNING:

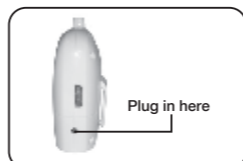
- The Monitor is not intended to replace responsible and proper parental supervision.
- Check your child's activity at regular intervals as this monitor will not alert parents to the silent activities of a child.
- ALWAYS KEEP THE TRANSMITTER, RECEIVER AND AC ADAPTERS OUT OF REACH OF CHILDREN.**
- This product is not intended to be used as a medical monitor and its use should not replace adult supervision.
- It is essential to check reception regularly. Please see the Testing Reception section for complete instructions.
- The Monitor is intended for indoor home use only.
- NEVER use the Transmitter or Receiver near water. For example, do not use near a bathtub, bathroom sink, laundry tub, kitchen sink, in a wet basement, etc.
- Always unplug the AC adapters from wall outlets during long periods of non-use.
- Position the Transmitter, Receiver and AC adapters to allow adequate ventilation and prevent these components from overheating.
- To prevent overheating, keep the Transmitter, Receiver and AC adapters away from heat sources such as radiators, heat registers, stove or other appliances (including am lifers) which produce heat. Also keep these components out of direct sunlight.
- Use only the AC adapters provided. Use of any other adapters may damage the Transmitter and /or Receiver. Plug the AC adapters into standard household current only (120V AC outlet)! To prevent entanglement and overheating, DO NOT use extension cords.
- The AC adapters may become slightly warm to the touch during operation. This is normal.
- Position the AC adapter cords so that they are not walked on or pinched by items placed upon or against them, paying particular attention to cords at AC adapter plugs, wall plugs, and the point at which the cords attach to the Transmitter and Receiver.
- This product should be serviced only by qualified service personnel at Dorel Juvenile Group when:
 - An AC adapter or its plug is damaged,
 - The Transmitter or Receiver have fallen,
 - Liquid has spilled into the Transmitter or Receiver or
 - The Transmitter or Receiver does not appear to operate normally or exhibit a marked change in performance.
- DO NOT attempt to service this product beyond that described in the Troubleshooting section at the end of these instructions. All other servicing should be referred to qualified personnel at Dorel Juvenile Group.
- NOTE: The LEDs emit IR (infrared) light that is not harmful.

WARNING!

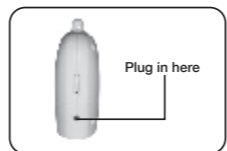
- TO REDUCE THE RISK OF FIRE OR ELECTRICAL SHOCK, DO NOT EXPOSE THIS PRODUCT TO WATER OR MOISTURE. NEVER ATTEMPT TO OPEN THE CASE OF THE PRODUCT. THIS IS DANGEROUS AND WILL VOID THE WARRANTY. NO SERVICEABLE PARTS INSIDE. REFER SERVICING TO DOREL JUVENILE GROUP CONSUMER RELATIONS (800-544-1108).**

- TO PREVENT ENTANGLEMENT, ONLY MOUNT THE BABY'S UNIT IN A LOCATION WHERE IT AND ITS AC ADAPTER CORD ARE OUT OF REACH OF CHILDREN.**
- TO PREVENT ENTANGLEMENT AND OVERHEATING NEVER USE AN EXTENSION CORD.**

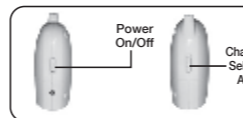
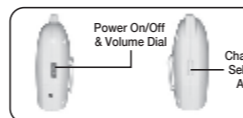
Quick Start Guide



1 Connect AC adapter to the side of Parent Unit.



2 Connect AC adapter to the side of Baby Unit.



Using Your Monitor

DO NOT PLACE UNITS IN CRIB OR MOUNT ON CRIB. KEEP OUT OF REACH OF CHILDREN.

AC ADAPTER

The Parent Unit operates on household electricity with the AC Adapter or with rechargeable battery (included). The Baby Unit operates on household electricity with the AC Adapter only. The Parent Unit will automatically convert to AC operation when used with the AC Adapter. It is not necessary to remove the battery during AC operation. The Parent Unit will automatically switch back to battery power when plug is disconnected from the AC Adapter.

The AC Adapter should be used whenever possible on the Parent Unit to save battery life. This is done by inserting the AC Adapter into the AC Adapter Jack. Then simply plug the AC Adapter into a nearby standard household outlet (120V AC outlet). The AC Adapters may become slightly warm to the touch during operation. This is normal.

This AC Adapter is a low voltage power source which allows you to use your household electricity to run the Baby and Parent Units when it connects to the AC Adapter Jack in the Parent Unit and in the Baby Unit, and plugs into any standard electrical outlet in your home.

To remove AC adapter from the outlet, firmly grasp the adapter "brick." DO NOT pull on the cord, as this could damage it.

CAUTION: This AC Adapter was made with a specific design for the Safety 1st Monitor. It cannot be used with any other appliance, and never use a different type of adapter with this Monitor.

Note: When using the Parent Unit on battery power, make sure the adaptor cord is unplugged from the side of the monitor. The Parent Unit will NOT function on battery power if the adaptor cord is still plugged into the side of the monitor. It must be disconnected from the unit.

Parent Unit (Receiver):

CHANNEL SELECTION

The Monitor can broadcast over two preset factory frequencies or channels. Use setting "1" making sure that both units are set to "1". If you experience static or noise interference, simply switch both units to channel "2", whichever channel option provides the best reception.

POWER INDICATOR

The power indicator is a green LED that indicates that the unit is on and functioning.

VOLUME DIAL

Volume can be adjusted to any desired listening level by rotating the Volume Dial, so you can be sure to hear your baby at all times. The sounds are transmitted through the wide range speaker. It is essential to check reception regularly. Refer to Use and Care section.

SOUND LIGHTS

As baby's voice gets louder, the sound light LEDs will illuminate from left to right and rises incrementally as baby's noise level increases until all Sound Light LEDs are illuminated.

LOW BATTERY INDICATOR

Low battery power is indicated by the red LED, which signals when the battery needs to be recharged.

LINK INDICATOR - OUT OF RANGE

Static noise will be heard if both units are not set to the same channels or if they are too far apart.

BELT CLIP

The Belt Clip is convenient for portability. You can clip the Parent Unit to your belt or waistband after a battery has been installed.

WARNING!

Strangulation Hazard - Children have STRANGLED in cords. Keep cords out of reach of children more than 3 feet (0.9 m) away.



3 Plug Parent Unit and plug Baby Unit into wall to operate AC power.

4 Turn Parent Unit on. Slide Channel Select switch to desired channel selection side. Power On Indicator will illuminate. Make sure volume is turned down to avoid squealing.

5 Turn Baby Unit on. Slide Channel Select switch to desired channel selection side. Power On Indicator will illuminate.

Using Your Monitor (continued)

Baby Unit (Transmitter):

PROPER POSITIONING

IMPORTANT: When choosing locations to set up the Baby Unit and Parent Unit, follow these guidelines:

- For best sound quality, place Baby Unit 6 feet (2 meters) away from the baby.
- Adjust volume dial on Parent Unit to appropriate level to minimize feedback.
- During use of the monitor, sound quality deteriorates as you reach the limits of the monitor's range. If this happens, you will need to move the Parent Unit in closer proximity to the Baby Unit.
- Adjust the volume to a comfortable level for your environment.

FREQUENCY RANGE

Channel 1 Frequency: 914.8 MHz
Channel 2 Frequency: 914.2 MHz
Carrier Frequency: 914.8 MHz to 914.2 MHz
Field Strength is 70 dB Micro-volts per meter at 3 meters.

NIGHT LIGHT

Activate the night light by pressing on the top of the Baby Unit. Night light will remain on until you press the top of the Baby Unit again.

Use and Care

IMPORTANT:

The first time you use your monitoring system, two adults should test it in the following way:

- Place Parent Unit at least 20 ft. (6m) away from Baby Unit.
- Have an adult speak into Baby Unit at various levels (soft to loud) while another adult checks Parent Unit for the proper sound reception.

Try Parent Unit in every location that it will be used.

Troubleshooting

IF YOU ARE STILL HAVING PROBLEMS, PLEASE CALL TOLL FREE FOR HELP! (800) 544-1108.

PROBLEM	POSSIBLE CAUSE	SOLUTION
Power indicator light not working	Power is not getting to the Unit	Make sure wall outlet is working; may possibly need to be turned on by a switch Make sure AC adapter is plugged into wall and the Unit
Static or interference in the signal transmission	Baby and Parent Units may be on different channels Appliances with loud fans near Units may be blocking transmission Unit may be under fluorescent lights Local interference from electrical or radio frequency appliance near your location	Make sure both Units are on the same channel (2 channel options: A or B) Turn off the appliances that may be causing interference Reduce the distance between the two Units or turn off lights Switch channel setting on both Parent and Baby Units
Parent Unit is making loud noises	Units are too close together Volume dial on Parent Unit may be too high	Parent Unit needs to be at least 10 feet / 3 meters away from the Baby Unit Turn down volume on the Parent Unit
Parent Unit is picking up noises from outside your home	Neighbors may have a baby monitor or cordless phone	Change both Units to the alternative channel (2 channel options: A or B)
Weak sound coming from Parent Unit	Battery may be weak Units may be too far away from each other	Check battery; recharge if necessary Move the Units closer to each other
Can't hear baby's sounds	Speaker or microphone could be blocked	Keep speaker/microphone clear from obstructions
Battery life is short	Battery life in the parent unit will last approx. 8hrs per charge	Use unit cautiously during battery operation to conserve your battery life
Parent Unit does NOT function with batteries	Adapter cord still plugged into side of monitor	Unplug the adaptor cord from side of Parent Unit

FCC Statement

WARNING: Changes or modifications not expressly approved by Dorel Juvenile Group can void your authority to operate this equipment.

This device complies with part 15 of the FCC Rules. Operation is subject to the following two conditions: (1) This device may not cause harmful interference, and (2) this device must accept any interference received, including interference that may cause undesired operation.

Note: This equipment has been tested and found to comply with the limits for a Class B digital device, pursuant to part 15 of the FCC Rules. These limits are designed to provide reasonable protection against harmful interference in a residential installation. This equipment generates, uses and can radiate radio frequency energy and, if not installed and used in accordance with the instructions, may cause harmful interference to radio communications. However, there is no guarantee that interference will not occur in a particular installation. If this equipment does cause harmful interference to radio or television reception, which can be determined by turning the equipment off and on, the user is encouraged to try to correct the interference by one or more of the following measures:

- Reorient or relocate the receiving antenna.
- Increase the separation between the equipment and receiver.
- Connect the equipment into an outlet on a circuit different from that to which the receiver is connected.
- Consult the dealer or an experienced radio/TV technician for help.

This device complies with Industry Canada licence-exempt RSS standard(s). Operation is subject to the following two conditions: (1) this device may not cause interference, and (2) this device must accept any interference, including interference that may cause undesired operation of the device.
Le présent appareil est conforme aux CNR d'Industrie Canada applicables aux appareils radio exempts de licence. L'exploitation est autorisée aux deux conditions suivantes:

- l'appareil ne doit pas produire de brouillage, et
- l'utilisateur de l'appareil doit accepter tout brouillage radioélectrique subi, même si le brouillage est susceptible d'en compromettre le fonctionnement.

Under Industry Canada regulations, this radio transmitter may only operate using an antenna of a type and maximum (or lesser) gain approved for the transmitter by Industry Canada. To reduce potential radio interference to other users, the antenna type and its gain should be so chosen that the equivalent isotropically radiated power (e.i.r.p.) is not more than that necessary for successful communication.
Conformément à la réglementation d'Industrie Canada, le présent émetteur radio peut fonctionner avec une antenne d'un type et d'un gain maximal (ou inférieur) approuvé pour l'émetteur par Industrie Canada. Dans le but de réduire les risques de brouillage radioélectrique à l'intention des autres utilisateurs, il faut choisir le type d'antenne et son gain de sorte que la puissance isotrope rayonnée équivalente (p.i.r.e.) ne dépasse pas l'intensité nécessaire à l'établissement d'une communication satisfaisante.

Helpful Hints

Use household electricity whenever possible. When the AC Adapter is used with your household electricity, you will find that the power is stronger and more consistent than when you rely solely on the battery. Range and sound quality also depends on the construction of your house. Steel reinforced wall, for example, reduces the effective range of the monitor. Conserve the battery so you will have power when you don't have easy access to AC outlets.

Make sure that both Units are on the same channel.

Even though you may hear your baby's sounds, proper use of this system requires that both Units must be on the same channel. If the Units are on different channels, the signals from the Baby Unit may still be strong enough to be picked up by the Parent Unit, but there will be a lot of static.

When not using the Unit, remove AC Adapter and be sure the power button is "OFF".

When you are not using the AC Adapter, remove it from the Unit and store it in a safe, dry place until you need it again. If the AC Adapter is plugged into the Parent Unit but not being used in an electrical outlet, the AC Adapter will prevent battery operation of the Unit.

When using the AC Adapter with household electricity, make sure the outlet is "ON".

Some electrical outlets are powered through a switch in the room. If the Baby Unit is plugged in and turned "ON", the power indicator light should be lit. If it is not, try turning the light switch in the room "ON".

Care and Cleaning:

Use a soft, dry cloth to keep your monitor free from dust. DO NOT immerse product in water.

One (1) Year Limited Warranty

Dorel Juvenile Group, Inc. warrants to the original purchaser that this 900 MHz Audio Monitor, is free from material and workmanship defects when used under normal conditions for a period of one (1) year from the date of purchase. Should the product contain defects in material or workmanship Dorel Juvenile Group, Inc., will repair or replace the product, at our option, free of charge. Purchaser will be responsible for all costs associated with packaging and shipping the product to Dorel Juvenile Group Consumer Relations Department at the address noted below and all other freight or insurance costs associated with the return. Dorel Juvenile group will bear the cost of shipping the repaired or replaced product to the purchaser. Product should be returned in its original package accompanied by a proof of purchase, either a sales receipt or other proof that the product is within the warranty period. This warranty is void if the owner repairs or modifies the product or the product has been damaged as a result of misuse.

This warranty excludes any liability other than that express stated previously, including but not limited to, and incidental or consequential damages.

SOME STATES DO NOT ALLOW THE EXCLUSION OR LIMITATION OF INCIDENTAL OR CONSEQUENTIAL DAMAGES, SO THE ABOVE LIMITATION OR EXCLUSION MAY NOT APPLY TO YOU.

THIS WARRANTY GIVES YOU SPECIFIC LEGAL RIGHTS, AND YOU MAY ALSO HAVE OTHER RIGHTS THAT MAY VARY FROM STATE TO STATE.

Thank you again for purchasing a Safety 1st product. We are not only about safety, we're also about your satisfaction. If you have any questions or comments, please call our Consumer Relations department at 1-800-544-1108 or e-mail us at consumer@safety1st.com.

©2013 Cosco Management, Inc. All Rights Reserved. Todos derechos reservados.

www.djgusa.com (800) 544-1108 www.safety1st.com Made in CHINA.

Hecho en CHINA. Styles and colors may vary. Los estilos y los colores pueden variar.

Distributed by (distribuido por) Dorel Juvenile Group, Inc., 2525 State St., Columbus,

IN 47201-7494 Dorel Distribution

Canada, 873 Hodge, St. Laurent,

QC H4N 2B1



11/22/13

4358-6514