

FEATURES

Heavy duty, high efficiency scroll compressor

Copper tubing with enhanced fin coils

R22 refrigerant

Insulated cabinet to minimize heat loss

Wire guard coil protection

Weather protected heavy-duty condenser fan motor

One-piece no leak top design

Easy service access

Insulated compartment to reduce sound

Easy service split-ring design blower with quick plug in wiring

PSC prelubricated multi-speed motor for low maintenance and maximum efficiency

Dynamically balanced blower wheel with resilient motor mounts for smooth, quiet operation

Trade available components

Color coded wiring for easy service

Horizontal or down discharge

Warranties: 10 year limited parts warranty available (5 year compressor). See limited warranty document for details.

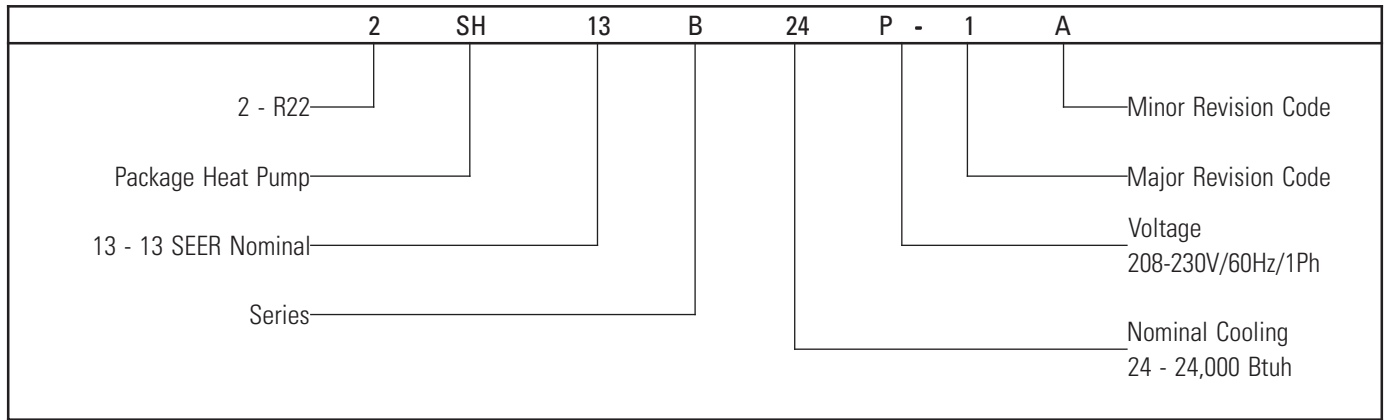
Ducane Package Heat Pump

2SH13B



Ducane[®]
AIR CONDITIONING
AND HEATING

Model Number Guide



Physical

Model	Outside Fan		Indoor Blower Wheel dia. X width (in.)	Refrigerant Charge (oz.)	Weight (lbs.)
	Diameter (in.)	Nominal RPM			
2SH13B24P	22	1075	10 x 6	129	380
2SH13B30P	22	1075	10 x 6	121	380
2SH13B36P	22	1075	10 x 8	152	400
2SH13B42P	26	825	10 x 10	186	509
2SH13B48P	26	825	10 x 10	188	520
2SH13B60P	26	825	10 x 10	208	520

Electrical

Model	Voltage/Hz/ Phase	Normal Voltage Range	Min. Circuit Ampacity	Max. Fuse/HACR Brkr.	Compressor		Fan Motor		Indoor Blower	
					Rated Load (amps)	Locked Rotor (amps)	Rated Load (amps)	Rated HP	Rated Load (amps)	Rated HP
2SH13B24P	208-230/60/1	197-253	18	25	10.4	56	1.1	1/5	2.2	1/2
2SH13B30P	208-230/60/1	197-253	22	30	13.4	73	1.1	1/5	2.2	1/2
2SH13B36P	208-230/60/1	197-253	24	35	14.7	83	1.1	1/5	2.2	1/2
2SH13B42P	208-230/60/1	197-253	28	40	16.6	95	1.7	1/4	3.6	3/4
2SH13B48P	208-230/60/1	197-253	34	45	21.1	109	1.7	1/4	3.6	3/4
2SH13B60P	208-230/60/1	197-253	41	60	26.6	137	1.7	1/4	3.6	3/4

Performance

Model	Cooling				Heating				CFM	
	Btuh	SEER	EER	S/T	HSPF	47°F		17°F		
						Btuh	COP	Btuh		COP
2SH13B24P	24,800	13.00	11.50	.74	7.70	24,000	3.25	14,800	2.20	800
2SH13B30P	30,000	13.00	11.00	.74	7.70	30,000	3.40	18,200	2.30	1000
2SH13B36P	35,400	13.00	11.00	.73	7.70	34,400	3.40	20,000	2.20	1200
2SH13B42P	40,000	13.00	11.20	.74	7.70	41,000	3.25	24,500	2.25	1400
2SH13B48P	46,000	13.00	11.40	.76	7.70	46,000	3.30	28,800	2.35	1600
2SH13B60P	55,500	13.00	11.00	.73	7.70	51,000	3.40	31,000	2.30	1800

Blower Performance

Model	Blower Speed	CFM @ ext. static pressure - in w.c. w/o filter(s) ¹						
		0.2	0.3	0.4	0.5	0.6	0.7	0.8
2SH13B 24,30	High	1470	1420	1360	1290	1220	1140	1050
	Med.	1070	1060	1020	1000	950	900	830
	Low	880	870	850	820	790	740	690
2SH13B 36	High	1510	1460	1400	1330	1250	1180	1100
	Med.	1060	1050	1030	990	950	900	850
	Low	870	860	840	820	790	750	680
2SH13B 42,48,60	High	2090	2000	1930	1820	1710	1590	1480
	Med.	1820	1780	1730	1650	1570	1480	1370
	Low	1520	1480	1450	1440	1410	1360	1260

¹ All air data is measured external to unit without air filters.

¹ Add 0.05 to static pressure for bottom duct connection.

Cooling Performance Extended Ratings

Model	Indoor Temp DB/WB °F	Outdoor Temp. - DB°F														
		65			82			95			105			115		
		Btuh	S/T	kW	Btuh	S/T	kW	Btuh	S/T	kW	Btuh	S/T	kW	Btuh	S/T	kW
2SH13B24	85/72	29,300	.63	1.86	27,100	.64	1.96	26,600	.67	2.20	24,700	.70	2.40	22,800	.73	2.61
	80/67	27,300	.70	1.68	26,100	.69	1.92	24,800	.74	2.16	22,300	.79	2.37	19,900	.83	2.58
	75/63	26,100	.71	1.66	24,800	.70	1.88	22,300	.78	2.13	20,000	.83	2.34	17,700	.88	2.55
2SH13B30	85/72	35,400	.63	2.35	32,700	.64	2.48	32,200	.67	2.78	29,900	.70	3.03	27,500	.73	3.30
	80/67	33,000	.70	2.13	31,600	.69	2.42	30,000	.74	2.73	27,000	.79	3.00	24,100	.83	3.26
	75/63	31,500	.71	2.10	30,000	.70	2.37	27,000	.78	2.69	24,200	.83	2.96	21,400	.88	3.22
2SH13B36	85/72	41,800	.62	2.78	38,600	.64	2.93	38,000	.66	3.28	35,200	.69	3.57	32,500	.72	3.89
	80/67	38,900	.69	2.51	37,300	.68	2.85	35,400	.73	3.22	31,900	.78	3.54	28,400	.82	3.85
	75/63	37,200	.70	2.48	35,400	.69	2.80	31,900	.77	3.17	28,600	.82	3.49	25,200	.87	3.80
2SH13B42	85/72	47,200	.63	3.08	43,700	.64	3.25	42,900	.67	3.64	39,800	.70	3.96	36,700	.73	4.31
	80/67	44,000	.70	2.78	42,100	.69	3.17	40,000	.74	3.57	36,000	.79	3.92	32,100	.83	4.27
	75/63	42,000	.71	2.75	40,000	.70	3.11	36,000	.78	3.51	32,300	.83	3.86	28,500	.88	4.21
2SH13B48	85/72	54,300	.64	3.48	50,200	.66	3.67	49,400	.69	4.12	45,800	.72	4.48	42,200	.75	4.88
	80/67	50,600	.71	3.15	48,400	.71	3.58	46,000	.76	4.04	41,500	.81	4.44	36,900	.86	4.83
	75/63	48,300	.72	3.11	46,100	.71	3.51	41,400	.80	3.98	37,100	.85	4.37	32,800	.91	4.77
2SH13B60	85/72	65,500	.62	4.35	60,600	.64	4.59	59,600	.66	5.15	55,300	.69	5.60	51,000	.72	6.10
	80/67	61,100	.69	3.94	58,400	.68	4.48	55,500	.73	5.05	50,000	.78	5.54	44,500	.82	6.04
	75/63	58,300	.70	3.88	55,600	.69	4.39	50,000	.77	4.97	44,800	.82	5.47	39,600	.87	5.96

Heating Performance Extended Ratings

Model	Outdoor Temp DB/WB°F									
	0/0		17/15		35/33		47/43		62/56	
	Btuh	kW	Btuh	kW	Btuh	kW	Btuh	kW	Btuh	kW
2SH13B24P	9,600	1.86	14,800	1.97	20,300	2.09	24,000	2.16	28,600	2.41
2SH13B30P	11,500	2.17	18,200	2.32	25,300	2.48	30,000	2.59	35,900	2.92
2SH13B36P	11,800	2.49	20,000	2.66	28,600	2.84	34,400	2.97	41,600	3.34
2SH13B42P	15,200	2.90	24,500	3.19	34,400	3.49	41,000	3.70	49,300	4.33
2SH13B48P	19,100	3.31	28,800	3.59	39,100	3.89	46,000	4.09	54,600	4.70
2SH13B60P	19,700	3.70	31,000	3.95	43,000	4.22	51,000	4.40	61,000	4.95

Heat Strip Electrical (24-42)

Model	Heater Model	Unit Supply Voltage Single Phase	kW	Min. Circuit Ampacity 1	Max. Fuse/HACR Brkr. 1	Min. Circuit Ampacity 2	Max. Fuse/HACR Brkr. 2	Min. Circuit Ampacity Single*	Max. Fuse /HACR Brkr. Single*
2SH13B24P	PHK05BP	240	5.00	31.3	35	--	--	48.2	50
		208	3.76	27.8	30	--	--	44.7	50
	PHK07BP	240	7.50	44.3	45	--	--	61.2	70
		208	5.63	39.1	40	--	--	56.0	60
	PHK10BP	240	10.00	57.3	60	--	--	74.3	80
		208	7.51	50.4	60	--	--	67.3	70
2SH13B30P	PHK05BP	240	5.00	31.3	35	--	--	49.0	60
		208	3.76	27.8	30	--	--	45.5	50
	PHK07BP	240	7.50	44.3	45	--	--	62.0	70
		208	5.63	39.1	40	--	--	56.8	60
	PHK10BP	240	10.00	57.3	60	--	--	75.0	80
		208	7.51	50.4	60	--	--	68.1	70
2SH13B36P	PHK05BP	240	5.00	31.3	35	--	--	52.1	60
		208	3.76	27.8	30	--	--	48.6	60
	PHK07BP	240	7.50	44.3	45	--	--	65.1	70
		208	5.63	39.1	40	--	--	59.9	70
	PHK10BP	240	10.00	57.3	60	--	--	78.1	80
		208	7.51	50.4	60	--	--	71.2	80
PHK15CP	240	15.00	57.3	60	26.0	30	104.2	110	
	208	11.27	50.4	60	22.6	25	93.8	100	
2SH13B42P	PHK05BP	240	5.00	33.0	35	--	--	55.7	60
		208	3.76	29.6	30	--	--	52.2	60
	PHK07BP	240	7.50	46.1	50	--	--	68.7	70
		208	5.63	40.9	45	--	--	63.5	70
	PHK10BP	240	10.00	59.1	60	--	--	81.8	90
		208	7.51	52.1	60	--	--	74.8	80
	PHK15CP	240	15.00	59.1	60	26.0	30	107.8	110
		208	11.27	52.1	60	22.6	25	97.4	100
	PHK20CP	240	20.00	59.1	60	52.1	60	133.8	150
		208	15.02	52.1	60	45.1	50	120.0	125

*Applicable with single point power connection

Heat Strip Electrical (48-60)

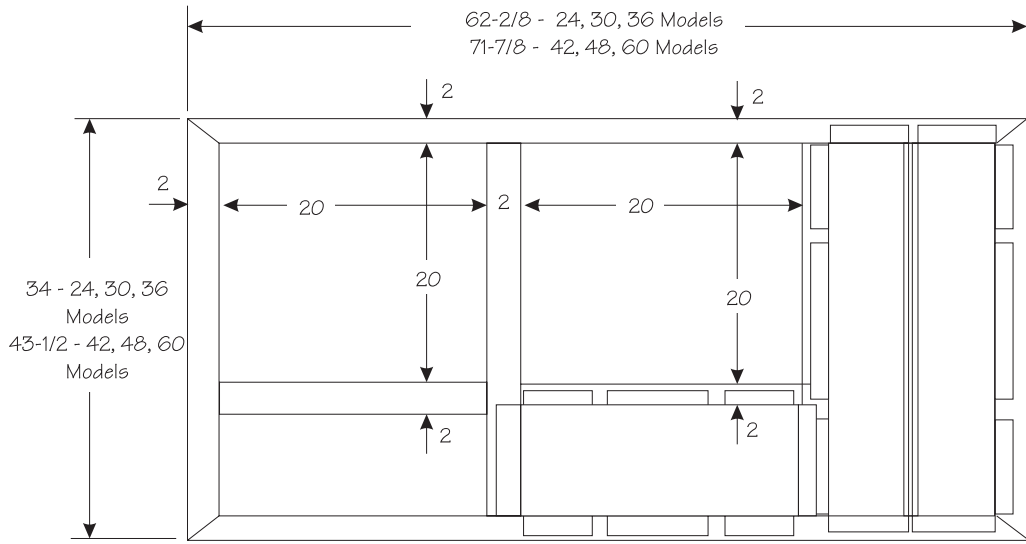
Model	Heater Model	Unit Supply Voltage Single Phase	kW	Min. Circuit Ampacity 1	Max. Fuse/HACR Brkr. 1	Min. Circuit Ampacity 2	Max. Fuse/HACR Brkr. 2	Min. Circuit Ampacity Single*	Max. Fuse/HACR Brkr. Single*
2SH13B48P	PHK05BP	240	5.00	33.0	35	--	--	60.6	70
		208	3.76	29.6	30	--	--	57.1	70
	PHK07BP	240	7.50	46.1	50	--	--	73.6	80
		208	5.63	40.9	45	--	--	68.4	80
	PHK10BP	240	10.00	59.1	60	--	--	86.6	90
		208	7.51	52.1	60	--	--	79.7	90
	PHK15CP	240	15.00	59.1	60	26.0	30	112.7	125
		208	11.27	52.1	60	22.6	25	102.3	110
	PHK20CP	240	20.00	59.1	60	52.1	60	138.7	150
		208	15.02	52.1	60	45.1	50	124.8	125
2SH13B60P	PHK05BP	240	5.00	33.0	35	--	--	66.3	80
		208	3.76	29.6	30	--	--	62.9	80
	PHK07BP	240	7.50	46.1	50	--	--	79.4	90
		208	5.63	40.9	45	--	--	74.2	90
	PHK10BP	240	10.00	59.1	60	--	--	92.4	100
		208	7.51	52.1	60	--	--	85.4	90
	PHK15CP	240	15.00	59.1	60	26.0	30	118.4	125
		208	11.27	52.1	60	22.6	25	108.0	110
	PHK20CP	240	20.00	59.1	60	52.1	60	144.5	150
		208	15.02	52.1	60	45.1	50	130.6	150

*Applicable with single point power connection

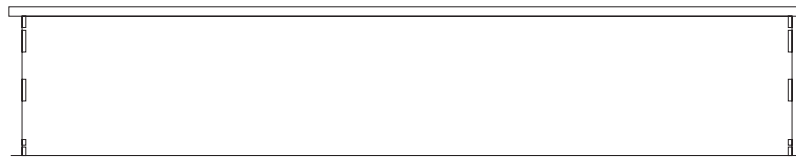
Accessories

Kit Number	Description	Used With
92M51	Lift Bracket	All
92M54	Internal Filter Kit	2SH13B 24,30,36
92M55	Internal Filter Kit	2SH13B 42,48,60
92M99	Roof Curb 8 inch height	2SH13B 24,30,36
93M00	Roof Curb 14 inch height	2SH13B 24,30,36
93M01	Roof Curb 8 inch height	2SH13B 42,48,60
93M02	Roof Curb 14 inch height	2SH13B 42,48,60
10W47	5 kw Electric Heater Kit	All
10W48	7.5 kw Electric Heater Kit	All
10W49	10 kw Electric Heater Kit	All
10W50	15 kw Electric Heater Kit	2SH13B 36-60
10W51	20 kw Electric Heater Kit	2SH13B 42-60
13W88	Single point power PHK05	with PHK05BP
13W89	Single point power PHK07	with PHK07BP
13W90	Single point power PHK10	with PHK10BP
13W91	Single point power PHK15,20	with PHK15,20CP

Roof Curb



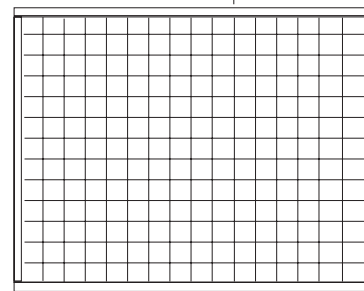
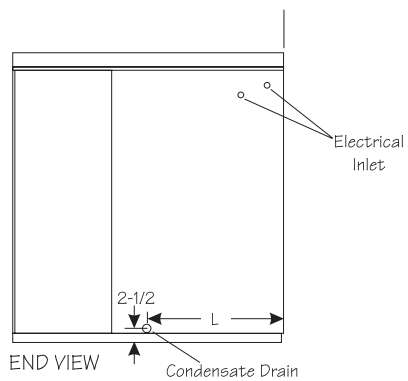
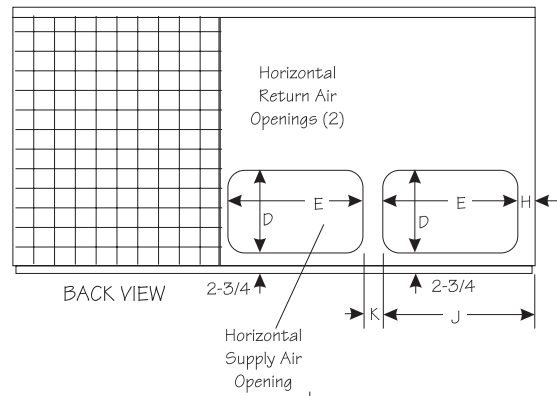
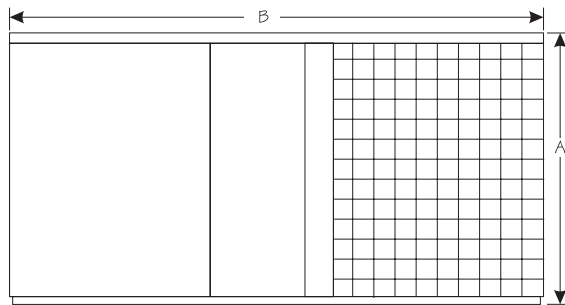
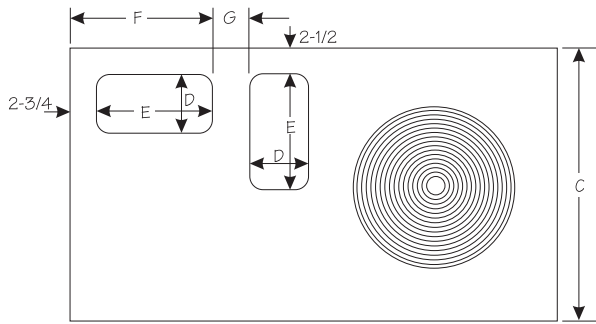
TOP VIEW



SIDE VIEW

Dimensions (in.)

Model	A	B	C	D	E	F	G	H	J	K	L
2SH13B24	34 1/4	65 3/8	36 1/2	11 1/4	17 1/4	20	8 1/2	3	20 1/4	4 1/2	19
2SH13B30											
2SH13B36											
2SH13B42	38 1/4	75	46	11 1/4	19 1/4	22	9 1/4	3 1/4	22 1/4	4	16 1/4
2SH13B48											
2SH13B60											



Ducane[®]
**AIR CONDITIONING
AND HEATING**

www.ducanehvac.com

1-800-448-5872

All specifications and illustrations
subject to change without notice
and without incurring obligations.