

About this Quick Start Guide

This "Quick Start Guide" explains the first steps on using the Bluetooth Service Center utility and it consists of the following items:

- ▶ [Starting Bluetooth](#)
- ▶ [Connecting to the Internet](#)
- ▶ [Communicating with other computers](#)
- ▶ [Appendix](#)
- ▶ [Bluetooth Brand](#)

For more detailed information, please refer to the "Bluetooth Utility User's Guide".

Starting Bluetooth

1. Turning on the Wireless Communication Switch

First, turn on the wireless communication switch on your personal computer.

Note: For details about the wireless communication switch, please refer to the user's manual that came with your personal computer.

2. Starting Bluetooth Manager

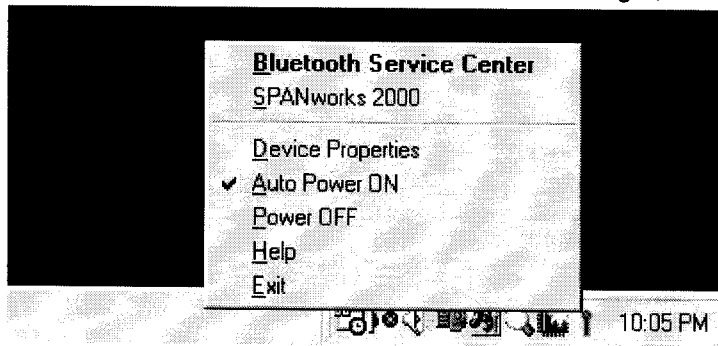
Go to [Start]-[Programs]-[Bluetooth Toshiba Stack]-[Bluetooth Manager].

After Bluetooth Manager has started, the internal power supply of Bluetooth turns on automatically and it can be a connected. As the following figure shows, after Bluetooth Manager starts, the program resides permanently on the task bar and the icon image changes according to the operation taking place.



In addition, when cancelling the auto Power ON of the Bluetooth module, right-click the [Bluetooth Manager] icon on the task bar and select "Auto Power ON" in the pop-up menu.

The next time the Operating System starts, the internal Bluetooth module will not be turned on automatically after Bluetooth Manager starts. To turn on the power of the internal Bluetooth Manager, choose [Power ON].

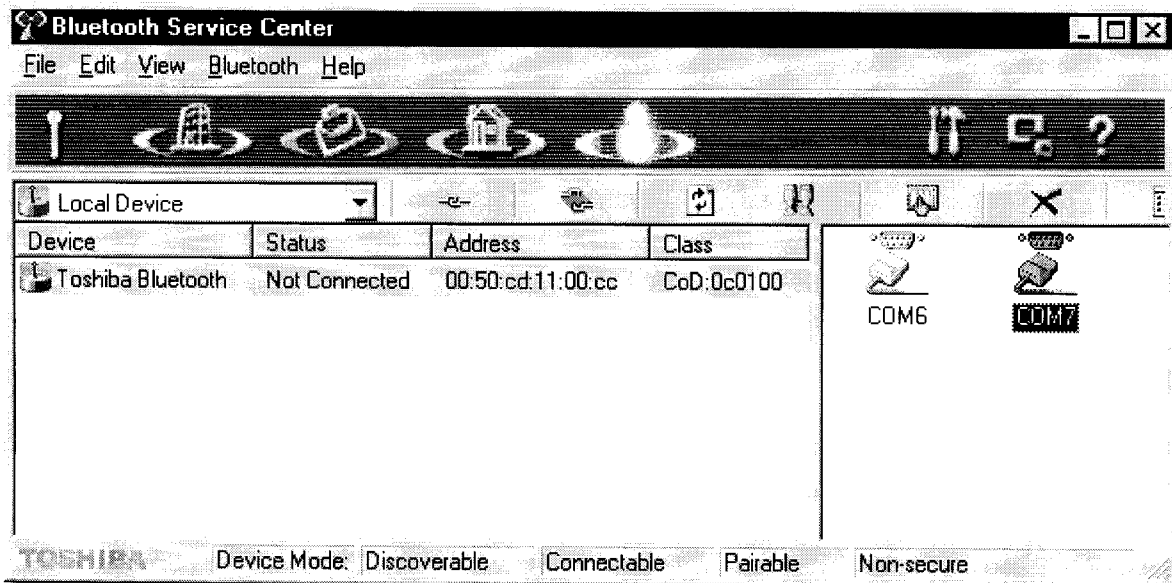


3. Starting the Bluetooth Service Center

Start the Bluetooth Service Center by selecting: [Start]-[Programs]-[Bluetooth Toshiba Stack]-[Bluetooth Service Center].

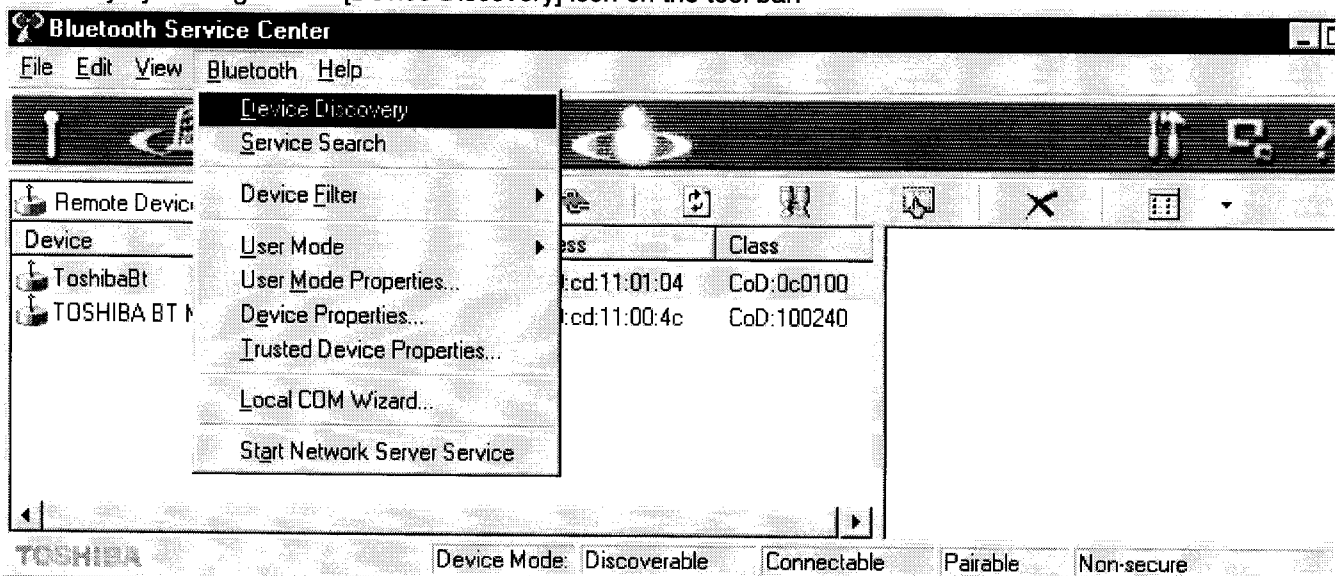
The main window of Bluetooth Service Center is shown below. The service view on the right side shows the profile services that your PC has. In this case, the PC has COM6 and COM7 as default COM Ports.

Note: The default COM port number depends on the configuration of your PC.



4. Starting the Device Discovery

The Device Discovery function detects the Bluetooth devices within range. Click [Bluetooth] on the menu bar in Bluetooth Service Center. Select [Device Discovery] from the pull-down menu. You can also start the Device Discovery by clicking the [Device Discovery] icon on the tool bar.



You need the following information to connect to the remote device.

- Device Name: e.g. Toshiba Bluetooth
- Device Address: e.g. 00:50:11:22:33:44
- Passkey (Password): in case a passkey is set up on the remote device

5. Service Search for the Remote Device

After the device discovery has been performed, discovered devices are listed in the device list view. Select the discovered device to connect to and click the [Service Search] icon. The Service Search will start. Service Search is investigating what service a remote machine owns.

Bluetooth Service Center

File Edit View Bluetooth Help

Remote Devices

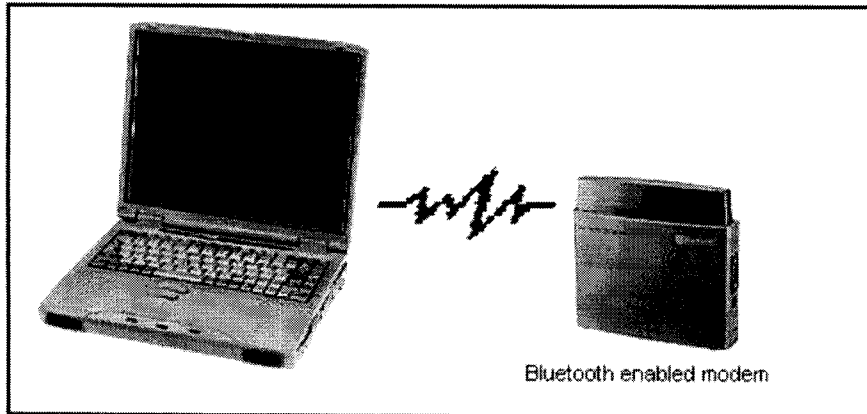
Device	Status	Address	Class
ToshibaBt	Not Connected	00:50:cd:11:01:04	CoD:0c...
TOSHIBA BT Mod...	Not Connected	00:50:cd:11:00:4c	CoD:100240

Search for Remote Service Information

TOSHIBA Device Mode: Discoverable Connectable Pairable Non-secure

Connecting to the Internet

By using a Bluetooth enabled modem, you can connect to the Internet wirelessly. To do so, perform the following steps.




1. Starting Bluetooth

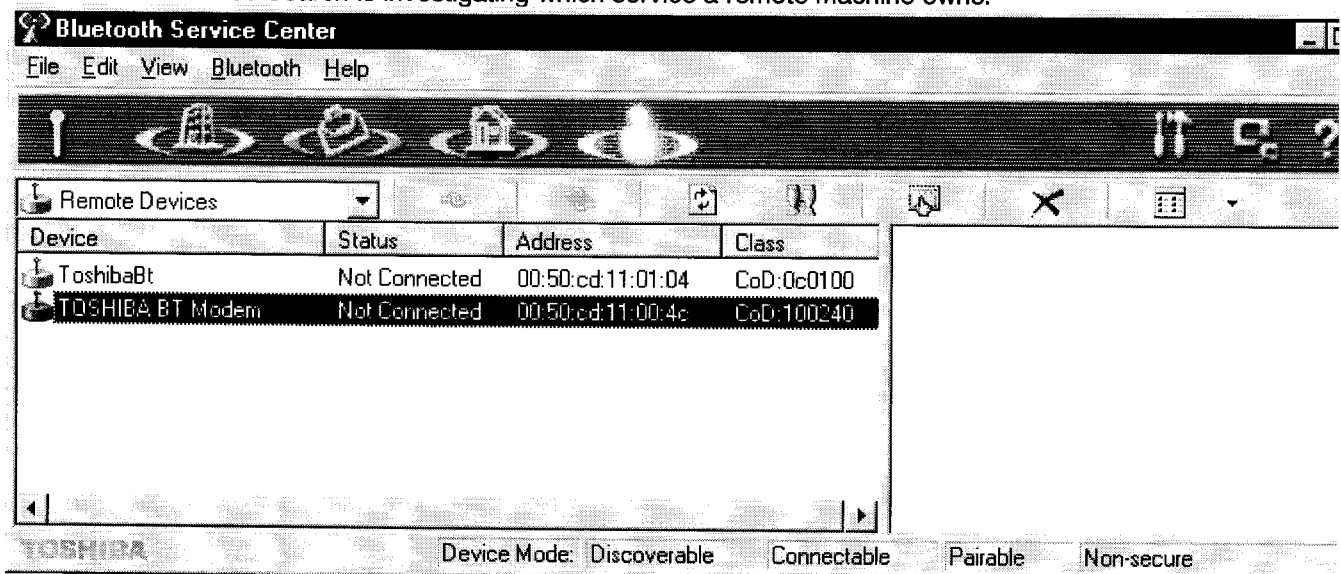
Execute the Device Discovery to detect the remote device. If you need to, [click here](#) to refer to the section about Starting Bluetooth.

To connect to a remote device, the following information is required:

- Device Name: e.g. Toshiba Bluetooth Modem
- Device Address: e.g. 00:50:11:22:33:44
- Passkey (Password): in case a passkey is set up on the modem

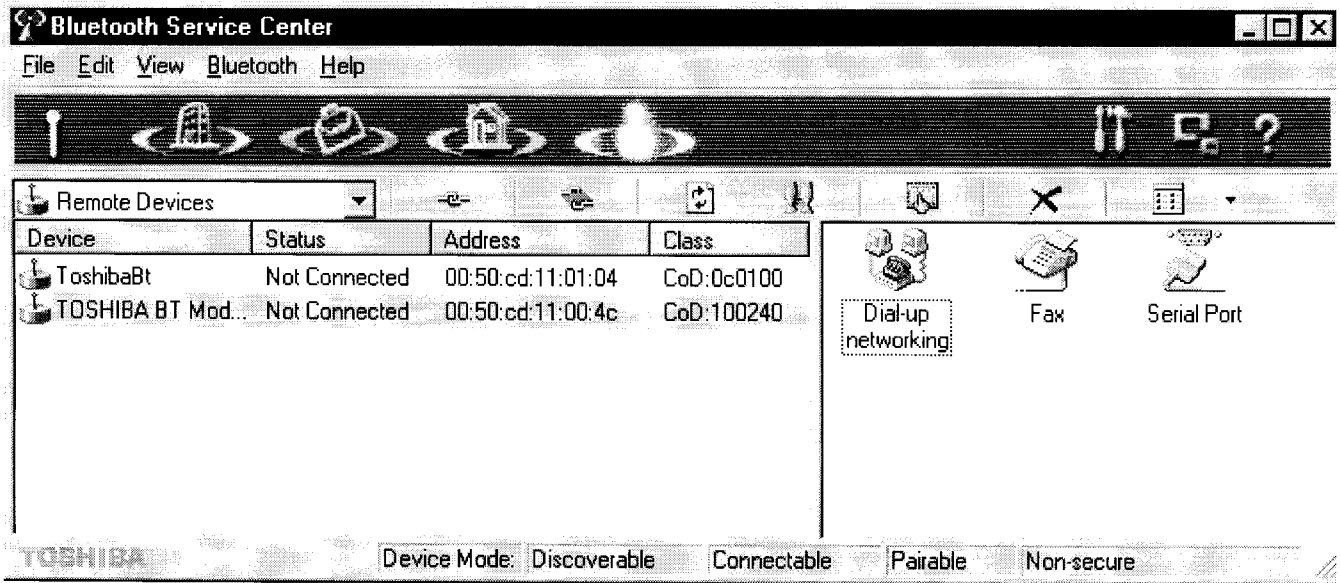
2. Service Search for the remote device

After the device discovery has been performed, discovered devices are listed in the device list. Select the discovered wireless modem you wish to connect to and click the  [Service Search] icon. The Service Search will start. The Service Search is investigating which service a remote machine owns.




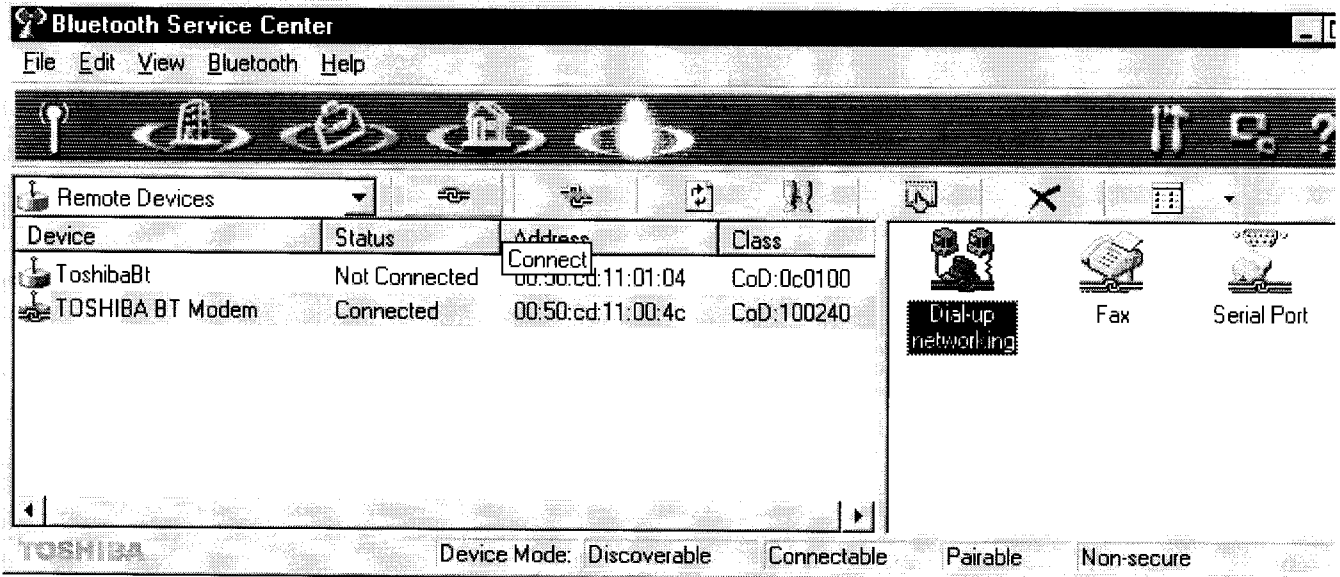
After the Service Search has been performed, the service that the wireless modem owns is displayed on the

service list view. The following example shows which services the wireless modem has.

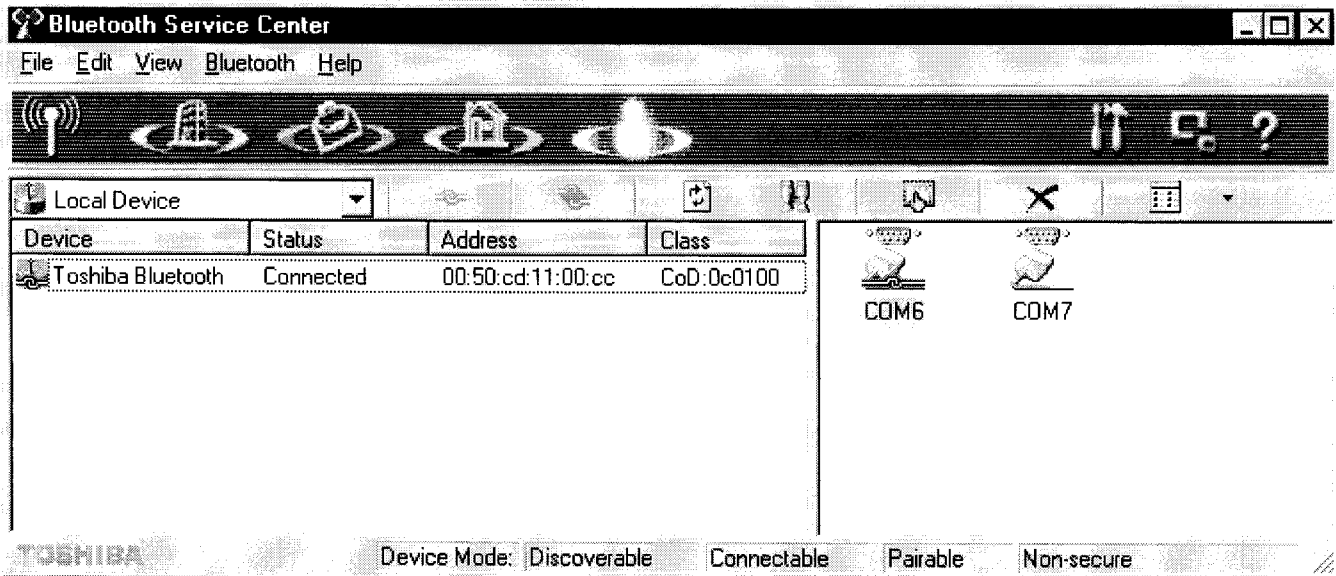


3. Connection with a Bluetooth wireless modem

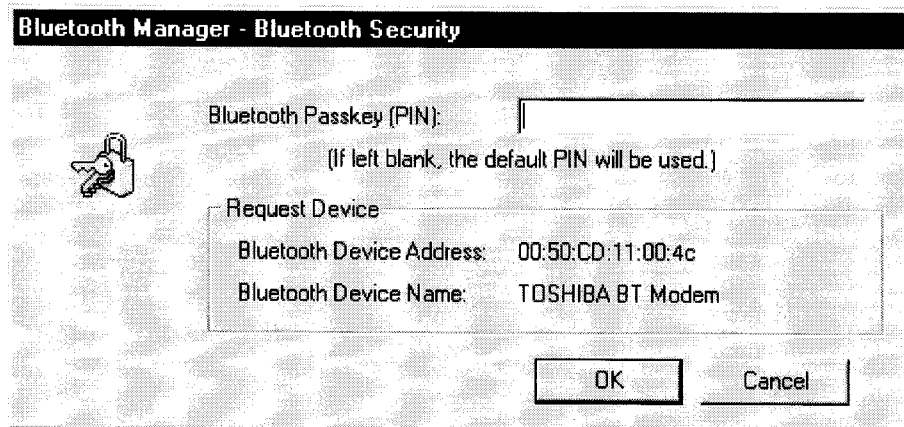
Check Dial-up networking icon in the services list view and click the  [connect] icon. The following example shows the connection established between the PC and the modem.



To check which COM port your machine is using, select "Local Device" from the tool button bar. The following example shows that the Local COM6 port is connecting with the wireless modem.



Note: If the wireless modem that you intend to connect sets up a passkey (password), the dialog that asks for a passkey (password) as shown in the following figure is displayed. In this case, please use the password beforehand set up by the modem.



Only input the password the first time.

4. Accessing an Internet Service Provider

Finally, set up configurations for the wireless modem and a browser to access an Internet Service Provider.

Note: If a Bluetooth enabled modem's driver is not installed on your PC, please install the drivers for wireless modem.

5. Disconnecting a COM Port Connection

To disconnect a link established to a remote device, check Dial-up networking icon on the service list view and [Disconnect] icon on the tool bar.

Bluetooth Service Center

File Edit View Bluetooth Help

Remote Devices

Device	Status	Address	Class
ToshibaBt	Not Connected	00:50:cd:11:00:4c	CoD:0c0100
TOSHIBA BT Modem	Connected	00:50:cd:11:00:4c	CoD:100240

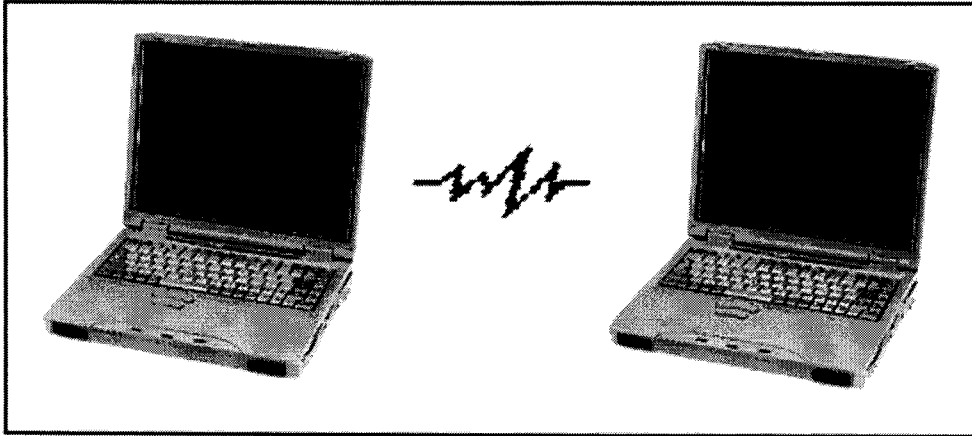
Disconnect

Dial-up networking Fax Serial Port

TOSHIBA Device Mode: Discoverable Connectable Pairable Non-secure

Communicating with other computers

You can communicate with other Bluetooth enabled computers wirelessly by using the Bluetooth Network Service program.



Examples of using the Bluetooth Network Service:

- **Sharing files/folders with the other machine.**
- **NetMeeting within a Bluetooth network.**

The next pages explain the Bluetooth Network Service.

Network Server Service

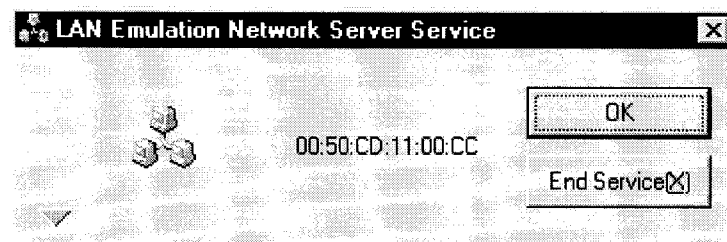
In a Bluetooth network service the machine which plays the role of a server must start the network service. The other machine will be a Client.

- ▶ If your machine has the role of a server, read the following section.
- ▶ If your machine has the role of a client, go to the next section.

Starting a Network Server Service

In a Bluetooth network service the machine which plays the role of a server must start the network service. Go to [Bluetooth] of menu bar, select [Start Network Server Service] to start the Network Server Service.

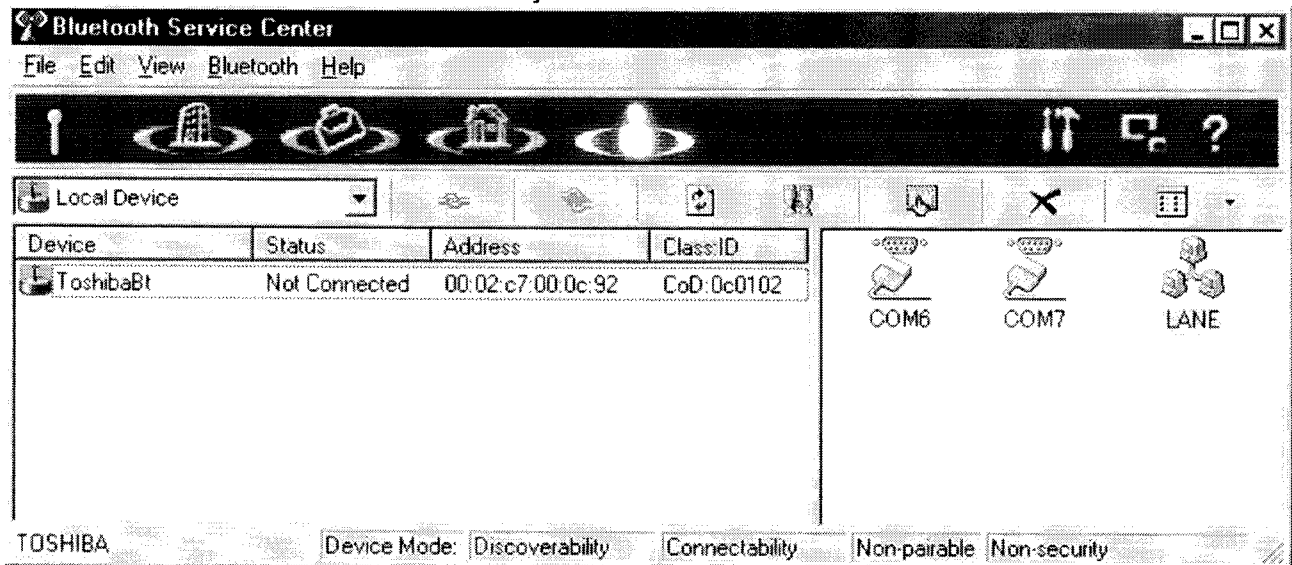
The following dialog displays. Click [OK] to store this dialog into the task bar.



When the LAN Emulation Server Service has started, a service icon is placed in the Task bar. It shows that the service is available and the computer is acting as the server.



The start of the LAN service is also indicated by the LAN icon in the service view.



Connecting to /Disconnecting from a Network

1. Starting Bluetooth


Perform a Device Discovery to detect the Server machine. If you need to, [click here](#) to refer to the section on "Starting Bluetooth".

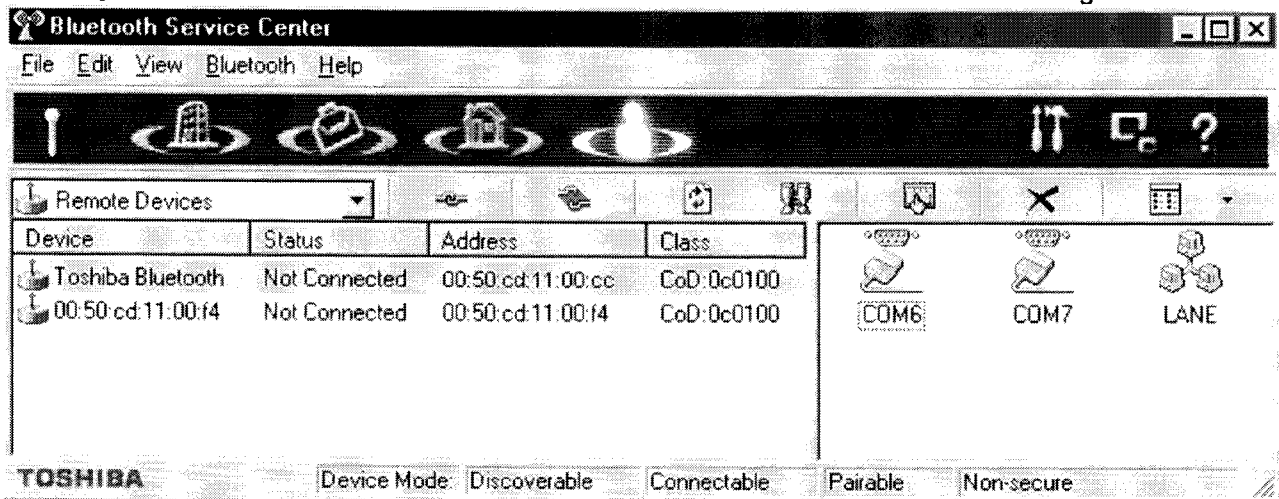
To connect to a remote device, the following information is required.


- Device Name: e.g. Toshiba Bluetooth Server
- Device Address: e.g. 00:50:11:22:33:44
- Passkey (Password): in case a passkey is set up on the remote machine

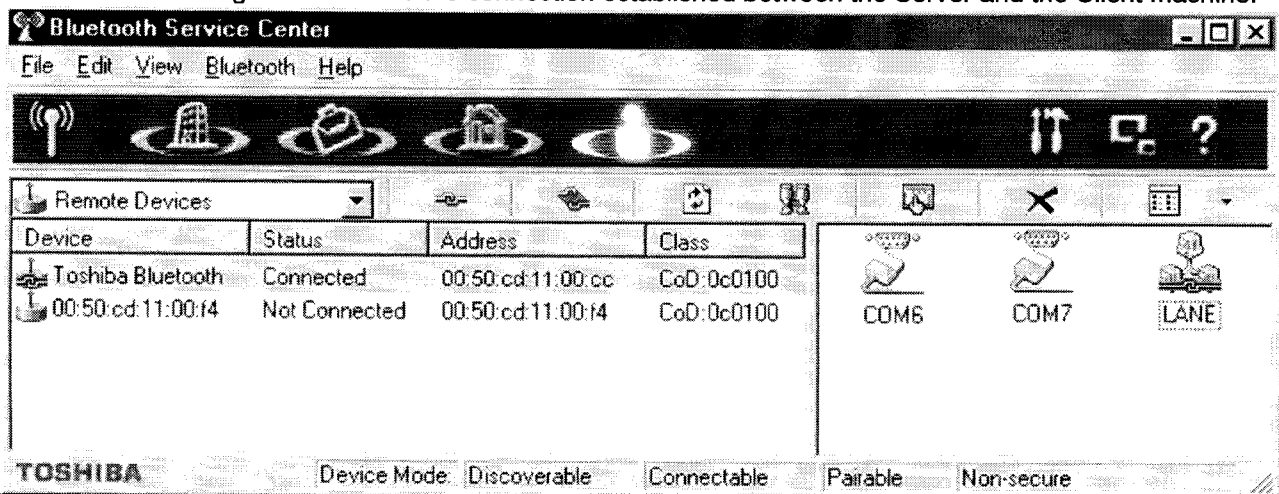
2. Connect to a Network

Caution! The machine used as a client must not select "Start LAN Emulation Service".


At the client side, perform a Device Discovery to detect a server machine and perform the following steps. Check the detected server machine in the device list view, and click  [Service Search] icon to do a service search. After that, you will be able to see a "LANE" icon in the service list view as shown in the following screenshot.



Next, check the "LANE" icon, and click the  [connect] icon. The Client Service starts to access the Server machine. The following screen shows the connection established between the Server and the Client machine.

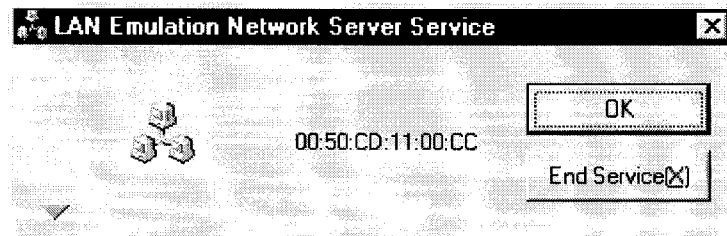


3. Disconnecting from a Network

To disconnect a Network Client, select [LANE] from the services list and click the  [disconnect] icon in the tool bar.

Closing the Network Server Service

To close the Network Service in a network group on the server machine, click the [Network Server Service] icon in the task bar. When the following dialog is displayed, click the [End Service(X)] button.



Sharing a file/folder

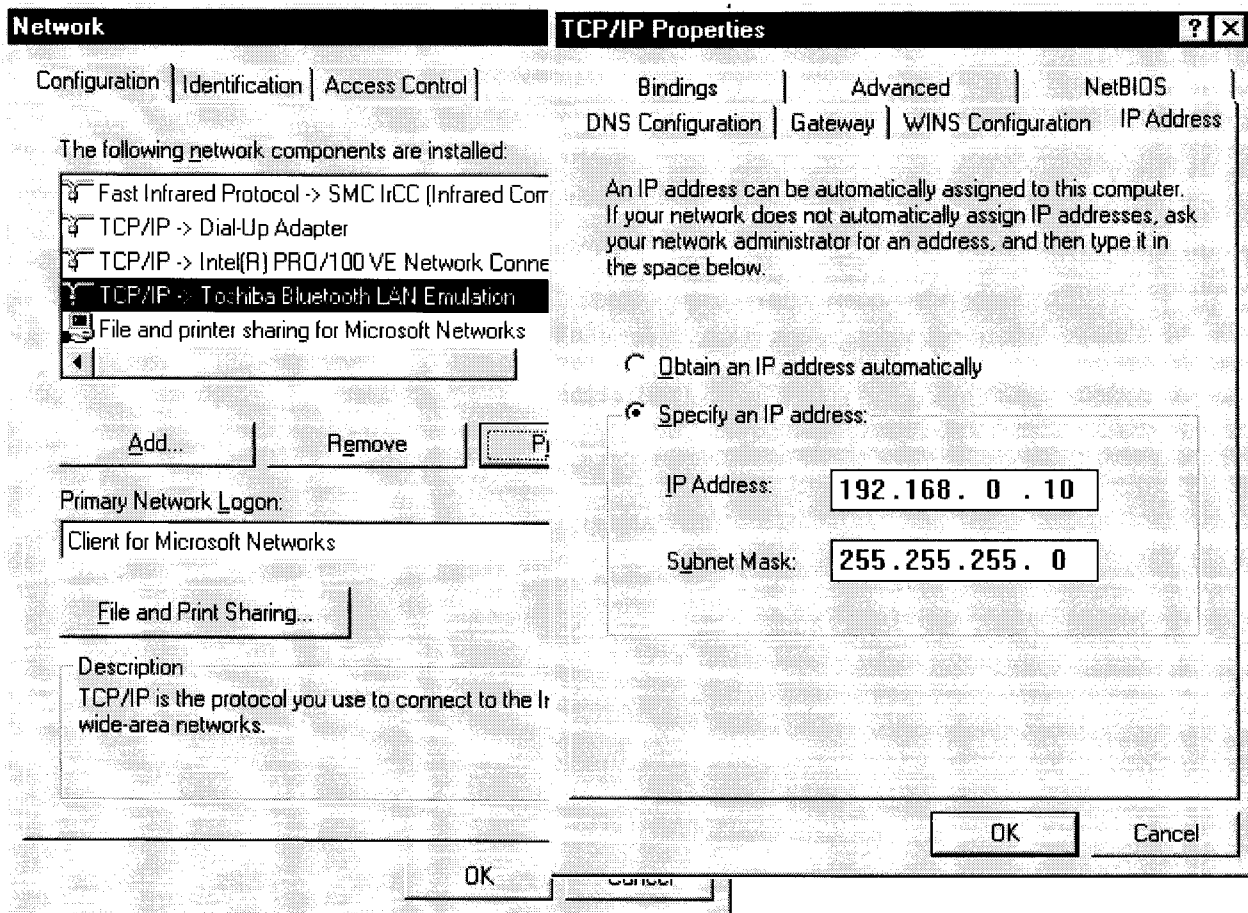
Please perform the following setup on all the machines in a network group before starting Network Service.

1. Starting the Bluetooth Manager

2. Configure the IP address

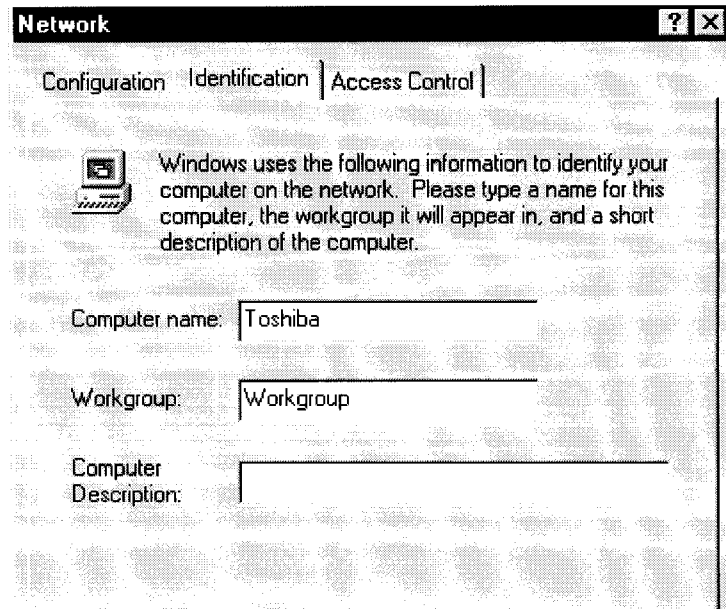
Go to [Control Panel]-[Network]. Open the [Configuration] tab. Check "TCP/IP->Toshiba Bluetooth LAN Emulation" and click the [Properties] button.

Open the [IP address] tab and click "Specify an IP address". Input the same IP address within a Network as in the figure below. But assign a different address in the 4th column for each machine. Click [OK] to close the dialog.



3. Input Identification

Open the [Identification] tab. Input your computer and workgroup name, which identifies your computer to other people on the network. But use the same workgroup name within the wireless network service. If necessary, input the "Computer Description".



4. Starting the Bluetooth Network Service

The Server starts the Network Server Service and the Client starts the connection with the Server. Double-click the [Network] icon on the Desktop and double-click [Entire Network] for exploring the Network neighborhood.

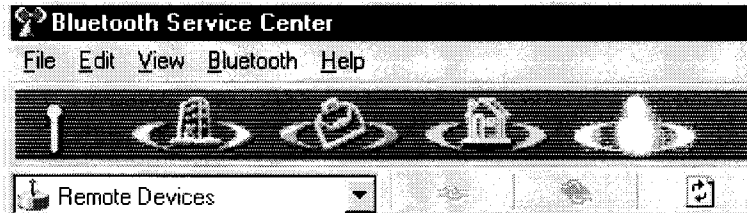
NetMeeting®

Using the Bluetooth Network Service enables you to perform a Windows NetMeeting by wireless communication. NetMeeting recognizes the meeting on a network, and the sharing of an application. For detailed information about NetMeeting, please refer to Windows Help.

Appendix

A. Security Mode

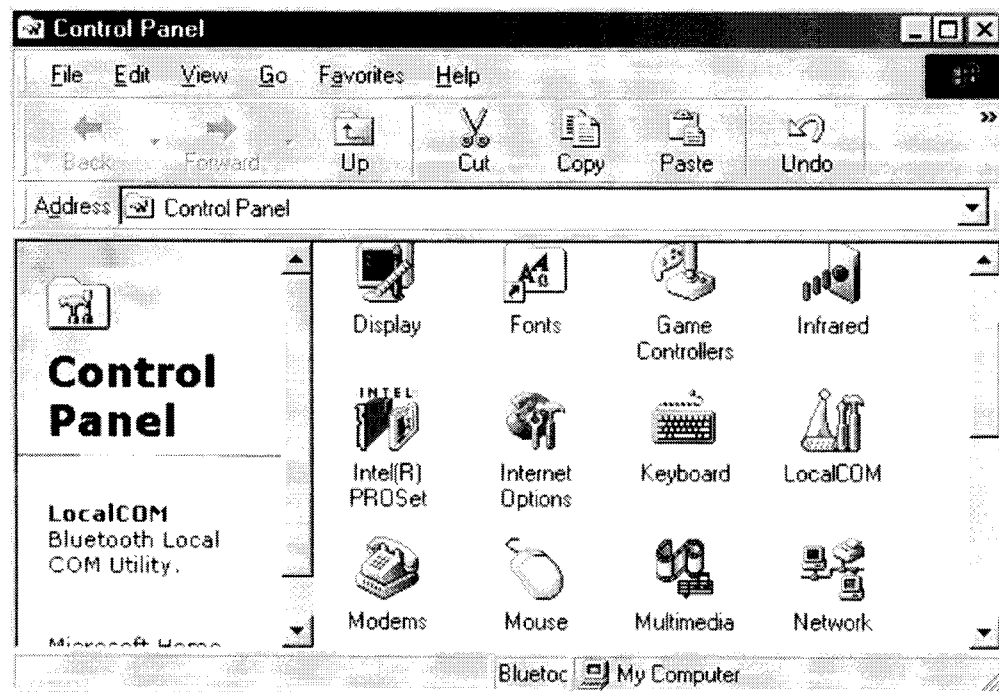
With regard to security setup, the standard is set beforehand as the Office/Mobile/Home/Others button of the Service Center as shown in the figure below. It is possible to change a security setting easily. However, this setting is very important, so please be careful of altering anything. The default security mode is configured as "Others" with "Non-security". If you need to change it, please refer to the "Bluetooth Utility User's Guide".



B. Add a Local COM Port

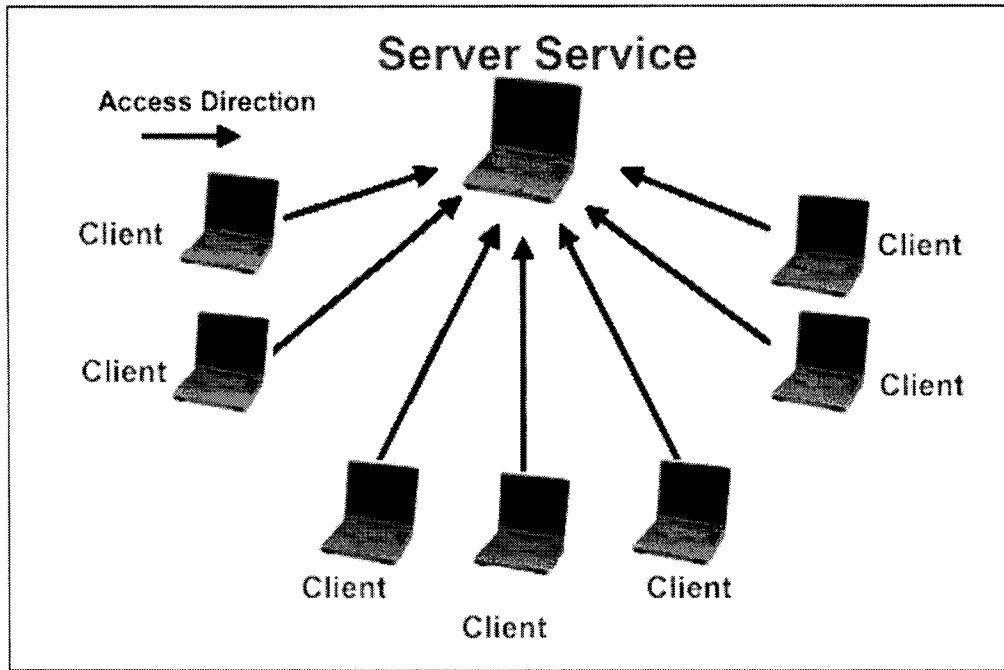
As a default setting, the local COM Port already creates a COM6. However, when a port is being used by another application, a Local COM is not created.

If you need to create a new local COM Port, open [Start]-[Setting]-[Control Panel]-[LocalCOM] and add a new COM Client Port. For more detailed information, please refer to the "Bluetooth Utility User's Guide".



C. Bluetooth Network Service

By using the Bluetooth network service, your wireless network environment can recognize a maximum of 8 PCs. A Bluetooth network consists of servers and clients, just like a wired LAN.



An example of a Bluetooth Network Service

Bluetooth Brand

Bluetooth™, research development and decisions about standards is carried out by the Bluetooth™ SIG (Special Interest Group).

Bluetooth™ SIG is the joint achievement of nine leading companies: Toshiba , Ericsson, Nokia, Intel, IBM, 3Com, Lucent Technologies, Microsoft, and Motorola. More than 1300 other manufacturers, from all parts of the world and various field of business, have now also joined the Bluetooth™ family. Toshiba Personal Computers that integrate Bluetooth devices passed the Bluetooth™ Qualification Program and are able to use the Bluetooth trademark.

For more information on Bluetooth™ SIG, please refer to the Bluetooth™ Official site. (<http://www.bluetooth.com/>)

Bluetooth Technical Facts

A tiny Bluetooth™ microchip, incorporating a radio transceiver, is built into digital devices. The Bluetooth™ technology makes all connections instantly and without an inch of cable. It facilitates fast and secure transmissions of both voice and data, even when the devices are not within line-of-sight. The radio operates in a globally available frequency band, ensuring compatibility worldwide.

Also, the radio operates in the 2.45GHz band, which is license-free and available to any radio system in the world. A Bluetooth radio link has a maximum data transfer rate of 724kbit/s. The normal range of the Bluetooth radio is either 10 meters or 100 meters, depending on your Bluetooth equipment.

Trademarks

- The BLUETOOTH trademarks used throughout this guide are owned by their proprietor and used by Toshiba under license.
- Microsoft, Windows, and Windows NT are registered trademarks of Microsoft Corporation in the U.S. and other countries.
- Other company and product names mentioned in this guide are trademarks or registered trademarks of their respective companies.