

Wireless LAN Module Unit

User's Manual

Model : TDPWLAN01

Prior to using wireless LAN module unit, please take the time to read through this user's manual to ensure correct usage of the unit.

This wireless LAN module unit offers an additional feature of wireless LAN supporting IEEE802.11g/b by embedding in a projector and controlled by a control unit which is connected to the unit with FFC cable.

This wireless LAN module unit is a built-in device designed to be exclusively used for projectors. Do not use for any other purposes.

This wireless LAN module unit is not commercially available to regular users for use.

IMPORTANT SAFETY PRECAUTIONS

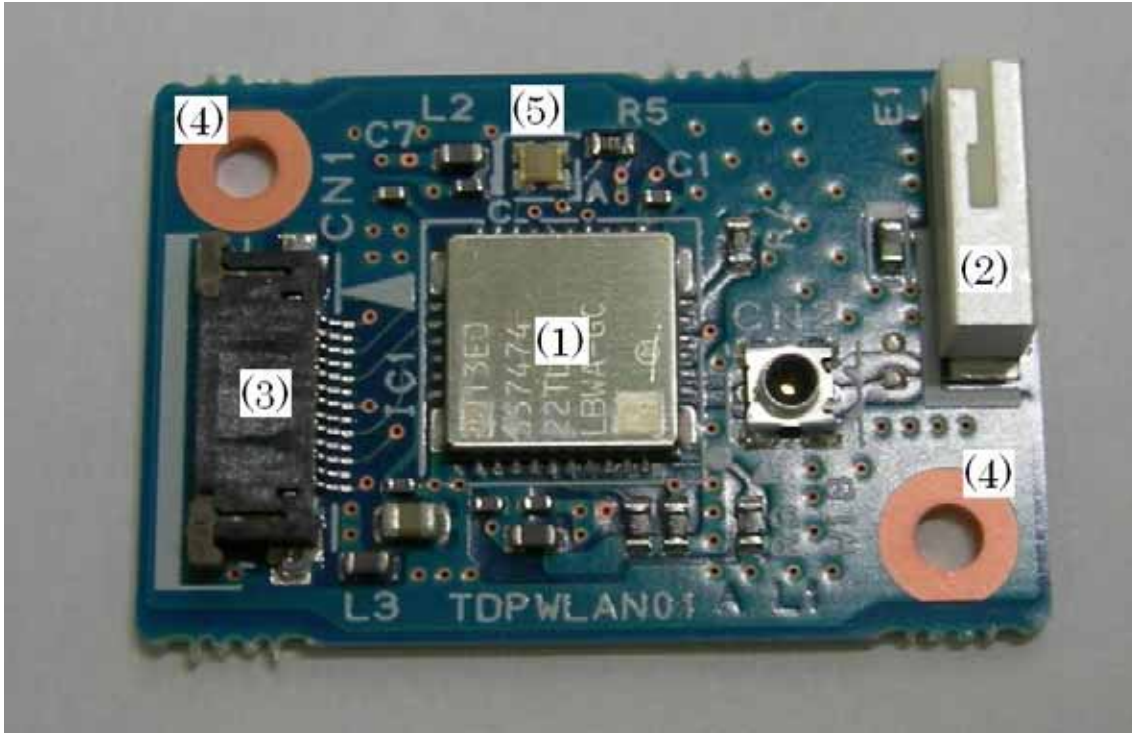
- Please read and observe all warnings and instructions given in this User's Manual.

- If you notice smoke or a strange smell coming from the unit, turn off the power.
- Do not attempt to repair, remodel or disassemble this product.
- Do not use near water.
- Do not use near people with heart pacemakers
- Do not use near electronic medical equipment, or in hospitals or other Medical institutions
- Do not use inside aircraft or in places where the wireless LAN module could interfere with electromagnetic signals.
The electromagnetic interference could cause a malfunction, resulting in an accident.
- If the use of a wireless LAN module interferes with another device's electromagnetic signals, cease use immediately.
The electromagnetic interference could cause a malfunction, resulting in an accident.

TOSHIBA

Appearance and Names of each part

Figure 1.



- (1). Wireless LAN Module
- (2). Chip Antenna
- (3). 13-pin connector for FFC cable
- (4). Hole for Screw
- (5). LED

TOSHIBA

Specification

Interface : SDIO FFC13-pin cable supported

Wireless LAN : IEEE802.11g/b

Operating frequency band : 2.4 GHz

Transmission speed : 54, 48, 36, 24, 18, 12, 9, 6 (Mbps)(IEEE802.11g)

11, 5.5, 2, 1 (Mbps)(IEEE802.11b)

Channel : 1 to 11 channel(See Table 1)

External dimensions : 32 x 21 x 5(typ.)mm

Weight : 2.8 g

Consumption current : 3.3V(200(typ.)mA) 1.8V(200(typ.)mA)

Conditions for usage environment : Temp: 0 to 40 degrees C;

relative humidity: 30% to 70%

Table 1.

Channel	Center Frequency
1	2412MHz
2	2417MHz
3	2422MHz
4	2427MHz
5	2432MHz
6	2437MHz
7	2442MHz
8	2447MHz
9	2452MHz
10	2457MHz
11	2462MHz

Pin assignment of 13-pin connector for FFC cable

1. SD-CLK
2. GND
3. SD-CMD
4. GND
5. SD-DAT0
6. GND
7. SD-DAT1
8. GND
9. SD-DAT2

TOSHIBA

10. 3.3V

11. SD-DAT3

12. 1.8V

13. RESET

Installation

Figure 2 shows an example of installation.

1. Place the rear side of the unit on the electrically-grounded metal surface and fix with two screws as shown in Figure 2.

2. Plug the FFC cable in 13-pin connector for FFC cable.

■ Notes

Do not place any objects which do not conduct electric waves outside the chip antenna.

Figure 2.



This device contains WLAN module and FCC ID: CJ6UTDPW01WL / IC ID: 248H-DTDPW01W

FCC Compliance Statement:

This device complies with part 15 of the FCC Rules. Operation is subject to the following two conditions:

- (1) This device may not cause harmful interference, and
- (2) This device must accept any interference received, including interference that may cause undesired operation.

This product has been tested and complies with the specifications for a Class B digital device, pursuant to Part 15 of the FCC Rules. These limits are designed to provide reasonable protection against harmful interference in a residential installation. This equipment generates, uses, and can radiate radio frequency energy and, if not installed and used according to the instructions, may cause harmful interference to radio communications. However, there is no guarantee that interference will not occur in a particular installation. If this equipment does cause harmful interference to radio or television reception, which is found by turning the equipment off and on, the user is encouraged to try to correct the interference by one or more of the following measures:

- Reorient or relocate the receiving antenna
- Increase the separation between the equipment or devices
- Connect the equipment to an outlet other than the receiver's
- Consult a dealer or an experienced radio/TV technician for assistance

Caution: Any changes or modifications not expressly approved by the party responsible for compliance could void the user's authority to operate the equipment.

RF exposure warning: This equipment must be installed and operated in accordance with provided instructions and the antenna(s) used for this transmitter must be installed to provide a separation distance of at least 20 cm from all persons and must not be co-located or operating in conjunction with any other antenna or transmitter. End-users and installers must be provided with antenna installation instructions and transmitter operating conditions for satisfying RF exposure compliance.