

bēm<sup>®</sup>  
WIRELESS

EXO-900  
multi-function lantern

# USER GUIDE



Thanks for purchasing the bem wireless EXO-900 Lantern Speaker! This speaker is Bluetooth enabled, easy to use, equipped with two speakers for more powerful sound, and ready to hit the road, making it ideal for listening to music on a hike, at home, or anywhere in-between. With its rugged, dust and water resistant design, its built-in lantern (providing up to 300 lumens), and SOS safety features, the EXO-900 is almost a necessary companion. But to make sure you get the best possible results from your new EXO-900 Bluetooth speaker, please thoroughly read and carefully follow all instructions in this User Guide. This short guide explains everything you need to know to start using your lantern with Bluetooth speaker.

Please keep this User Guide in a convenient location for future reference and visit [bemwireless.com](http://bemwireless.com) for additional information.



6	Product Overview
9	Operation Details
14	Troubleshooting
15	Maintenance
15	Technical Specifications
16	Stay in Touch
17	FCC Statement
19	Safety Instructions
20	Warranty

# Product Overview

The bem wireless EXO-900 Lantern Speaker combines great sound with Bluetooth connectivity. With a rugged design and a carabiner included, hands-free use on the go is easy! And the two-speaker design makes sure you always get great sound. Simply pair your EXO-900 with your Bluetooth enabled device and enjoy wireless performance wherever you are.

## **Package Contents**

Your EXO-900 should include:

EXO-900 x 1

Auxiliary (AUX) Cable x 1

AC Adaptor x 1

Car Power Adaptor x 1

Large Carabiner x 1

User Guide x 1

If any items are missing or damaged, please call bem wireless customer support at 1-855-839-8616 or email [admin@bemwireless.com](mailto:admin@bemwireless.com) to arrange for replacements.

## **Durability**

Trail-ready, life-ready, you ready!

Wireless technology is great, but sometimes you need something that lets you enjoy your music when you're otherwise disconnected. The EXO-900 offers that freedom with its perfect combination of good looks, connectivity, and durability. And with an IPX rating for dust resistance and water resistance, it can handle almost anything you throw at. Just toss it in your bag, hang it on your pack, your tent, or from a small tree limb using the large carabiner that's included, or carry it along and enjoy life on the road - or trail - without worrying about your music.

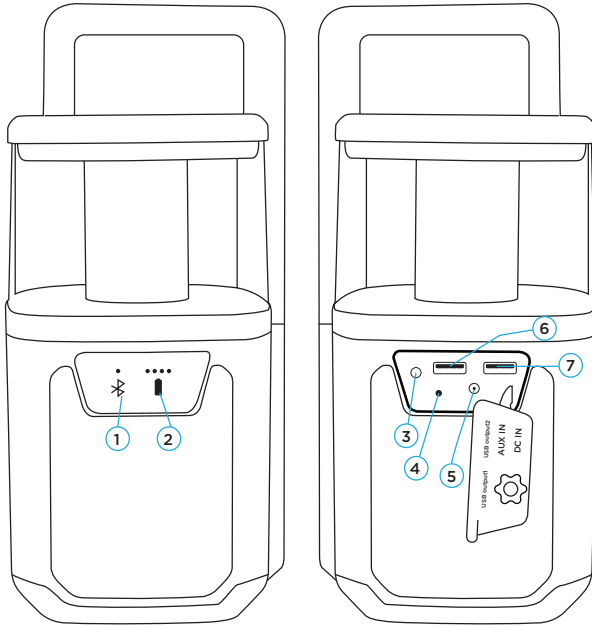
## **Safety**

Whether you're hiking, camping, or just generally out exploring the world, safety is important. That's why the EXO-900 Speaker has an audio/visual SOS alarm that can sound/flash up to 24 hours after the battery dies (If three AAA batteries - not included - are properly installed. See "Backup Battery Installation" on page 5.).

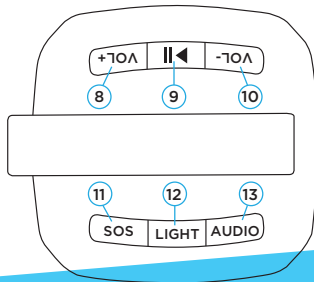
## **Compatibility**

Compatible with devices enabled with Bluetooth technology, including iPhones, iPads, iPods, smartphones, laptops, tablets and more.

# Meet Your New EXO-900



1. Bluetooth Indicator LED
2. Battery Indicator LEDs (4)
3. AUX IN Port
4. Attachment Bolt
5. DC IN Port
6. USB Output 1
7. USB Output 2



8. Volume Up Button
9. Play / Pause
10. Volume Down Button
11. SOS Button
12. Light Button
13. Audio Button



# Operation Details

The full set of instructions below will help you get the most use out of your EXO-900 Lantern Speaker.

## Charge

Connect your EXO-900 to a standard wall outlet using the AC adaptor. When charging, one or more of the Battery Indicator LED's will turn red and one will flash to indicate the level of charge on the EXO-900 and all four Battery Indicator LEDs will turn red when fully charged. Please allow approximately 2 hours to fully charge.



1. You may use your EXO-900 while it's charging.
2. The four Battery Indicator LED's indicate the following: 1 LED is solid red when 25% charged, 2 LEDs are solid red when 50% charged, 3 LEDs are solid red when 75% charged, and 4 LEDs are solid red when 100% charged.

## Connectivity Options

### Bluetooth

When your EXO-900 is fully charged or plugged into a standard wall outlet, pair it with your smartphone or other Bluetooth enabled device.

# Operation Details (cont)

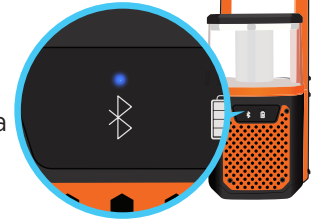
1. Press the AUDIO button to turn on the speaker. A tone will sound to indicate that the speaker has powered on and is ready to pair with your device. The blue Bluetooth Indicator LED will flash rapidly.



2. Activate Bluetooth on your smartphone or other Bluetooth enabled device (refer to your device user guide for details). Your smartphone/device will now begin searching for Bluetooth devices.



3. When your smartphone/device finishes searching, select "EXO-900" from the device list. When connected, a tone will sound from the speaker and the blue Bluetooth Indicator LED will remain on without flashing.



After initial pairing, "EXO-900" will appear in your device list and a connection will automatically be established when the speaker is turned on and Bluetooth is activated on your device. A tone will sound when the device is powered on and a tone indicating a successful Bluetooth connection will follow.

Use your device to find the music you love. Hit play on your device. Enjoy your music.

NOTE: When the Bluetooth connection is lost, the blue Bluetooth Indicator will begin flashing.

# Operation Details (cont)

## **Auxiliary**

Your EXO-900 can also connect to audio devices that are not Bluetooth enabled. Connect your device to your EXO-900 using an auxiliary (AUX) cable (included) by inserting one end of the cable into the AUX IN port on your EXO-900 and the other end into your device as specified. The blue Bluetooth Indicator LED will light solid blue when connected to a device with an AUX cable and the speaker will default to AUX connectivity when powered on with the AUDIO button

## **Power On/Off - Audio**

Press the AUDIO button to power on your EXO-900. A tone will sound to indicate that the speaker has powered on and is ready to pair with your device. The blue Bluetooth indicator LED will flash rapidly.

Press the AUDIO button to power off your EXO-900. No chime will sound when the unit is turned off, but the Bluetooth light will stop flashing.

## **Power On/Off - SOS Signal (Audio sound)**

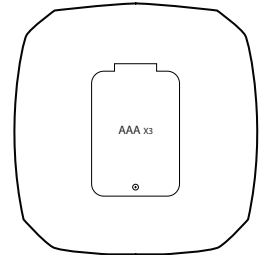
Press and hold the SOS button. The international Morse code distress signal of three short beeps, three long beeps, and three short beeps (... ——...) will begin to sound at 90dB. The light will flash the same pattern.

Press the SOS button to power off the SOS feature.

# Operation Details (cont)

## Backup Battery Installation

Three AAA batteries (not included) can be installed in the bottom of the speaker to allow the lantern to work, the Bluetooth speakers to function, and the SOS signal to continue broadcasting up to 24 hours after the rechargeable battery dies. To install batteries, follow the simple steps outlined below.



1. Loosen the screw on the battery door using a standard Phillips-head (crosshead) screwdriver until you can remove the battery door.
  2. Insert the batteries according to the directions displayed in the battery compartment.
  3. Replace the battery door and tighten the screw
- To ensure performance, these batteries should be replaced every 6 months.

## Music Controls

Play, pause, skip and otherwise control your music as you normally would from your device after pairing with you EXO-900 Speaker. You can also use the Play/Pause button (with icons) on the top of the device.

## Volume Controls

1. On your EXO-900: Repeatedly press the VOLUME UP button to increase the volume incrementally or hold the VOLUME UP button to steadily increase the volume. Repeatedly press the VOLUME DOWN button to decrease the volume incrementally or hold the VOLUME DOWN button to steadily decrease the volume.
2. On your device: Adjust the volume of your music as you normally would.

# Operation Details (cont)

**NOTE:** If the VOLUME DOWN button is pressed often enough or held long enough, the speaker will stop producing sound until the volume is increased again, but the speaker will remain on and the music will continue to play.

## Lantern Controls

Sometimes you need a little light. Sometimes you need a lot. The EXO-900 offers the best of both worlds. The simple steps outlined below will walk you through switching between the lantern's four different light modes.

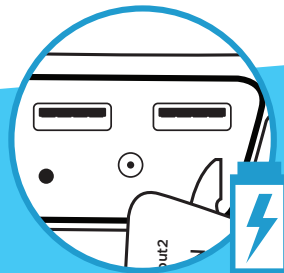
1. Press the LIGHT button to turn the light on. It will start in the “high” setting.
2. Press the LIGHT button again and the lantern will turn down to “medium.”
3. Press the LIGHT button again and the lantern will turn down to “low.”
4. Press the LIGHT button again and the lantern will turn off.
5. Press the LIGHT button again to go back through the options listed above.

The lantern may be used/controlled while other functions are in use.

## USB Charging

The two USB ports on the back panel of your EXO-900 (see “Meet Your New EXO-900” on page 8) can be used to charge mobile devices. If your device can be charged with a USB port (refer to your device user guide for details) simply insert the USB end of your USB cable (not included) into the speaker and then insert the other end into your device to begin charging.

The two USB output DC 5V,1A,only used for charging with no USB playing function.



# Troubleshooting

Your EXO-900 is designed to operate easily and reliably. However, problems can arise from time to time. If you need a little help, check out these common issues and solutions.

## **Will Not Turn On**

- Your EXO-900 may not be charged. Please charge for at least 2 hours.
- Make sure to firmly press the desired button. The AUDIO, LIGHT, or SOS button will turn on the speaker for that given function.

## **Bluetooth Won't Connect**

- Make sure your EXO-900 speaker is attempting to pair with your Bluetooth device (blue Bluetooth indicator LED flashing rapidly).
- Make sure the Bluetooth function on your smartphone or other Bluetooth enabled device is activated.
- Make sure you are within Bluetooth connectivity range (40 feet).

## **Poor Sound Quality/Volume**

- Make sure your EXO-900 speakers are facing outward and are unobstructed
- Make sure the volume on your EXO-900 Speaker and your device are at your desired level.

If issues persist, you can find additional suggestions and technical support at [bemwireless.com/support](http://bemwireless.com/support).

# Maintenance

To keep your EXO-900 working well and looking sharp, simply wipe with a dry cloth as needed. Do not use cleaning agents as they may damage the finish.

## Technical Specifications

Note: All specifications are subject to change without notice.

Product Name	EXO-900
Model Number	EXO900
Music Time	Up to 6 hours (with internal battery)
Bluetooth	V4.1 with auto pairing
SOS Audio Signal	90 dB
Light Brightness	up to 300 lumens
Power Supply	DC In
Operating Temperature	32°F - 113°F
Dimensions	10.7" H x 4.75" W x 5.25" D
Battery	Rechargeable 4000mAh
Bluetooth Range	40ft

# Stay in Touch!

For questions, comments, or to purchase additional bēm wireless products, go to: [bemwireless.com](http://bemwireless.com).

You can also follow us at:



[facebook.com/bemwireless](https://www.facebook.com/bemwireless)



[twitter.com/bemwirelessco](https://twitter.com/bemwirelessco)



[youtube.com/bemwireless](https://www.youtube.com/bemwireless)



# FCC Statement

1. This device complies with Part 15 of the FCC Rules. Operation is subject to the following two conditions:

- (1) This device may not cause harmful interference, and
- (2) This device must accept any interference received, including interference that may cause undesired operation.

**C E2200**

2. Changes or modifications not expressly approved by the party responsible for compliance could void the user's authority to operate the equipment.

NOTE: This equipment has been tested and found to comply with the limits for a Class B digital device, pursuant to Part 15 of the FCC Rules. These limits are designed to provide reasonable protection against harmful interference in a residential installation.

This equipment generates uses and can radiate radio frequency energy and, if not installed and used in accordance with the instructions, may cause harmful interference to radio communications.

However, there is no guarantee that interference will not occur in a particular installation. If this equipment does cause harmful interference to radio or television reception, which can be determined by turning the equipment off and on, the user is encouraged to try to correct the interference by one or more of the following measures:

- Reorient or relocate the receiving antenna.
- Increase the separation between the equipment and receiver.
- Connect the equipment into an outlet on a circuit different from that to which the receiver is connected.
- Consult the dealer or an experienced radio/TV technician for help.

# FCC Statement (cont)

**RF warning statement:**

The device has been evaluated to meet general RF exposure requirement. The device can be used in portable exposure condition without restriction.

# Safety Instructions

This product is specially designed based on full attention to safety; in order to encourage accident-free operation, please follow the guidelines listed below:

- Do not drop, unpack, open, hit, bend, puncture, burn or otherwise attempt to damage/modify the set
- Avoid using the set in the rain or near basins or sinks where parts may come in contact with water
- Protect the set from all heat-producing devices, including radiators, forced air vents, cooking surfaces, and other heat-producing devices
- Set the volume properly to prevent damage to the unit and personal injury

## Correct Disposal of this Product



This marking indicates that this product should not be disposed of with other household wastes throughout the EU. To prevent possible harm to the environment or human health from uncontrolled waste disposal, recycle it responsibly to promote the sustainable reuse of material resources. To return your used device, please use the return and collection systems or contact the retailer where the product was purchased. Retailers can take this product for environmentally safe recycling.

## Warning

- The battery (battery or batteries or battery pack) shall not be exposed to excessive heat such as sunshine, fire or the like.
- CAUTION: Danger of explosion if battery is incorrectly replaced. Replace only with the same or equivalent type.

# 90-Day Limited Warranty

bēm wireless warranties this product against defects in materials and/or workmanship under normal use for a period of NINETY (90) DAYS from the date of purchase by the original purchaser (“Warranty Period”). If a defect arises and a valid claim is received within the Warranty Period, at its option bēm wireless will either 1) Repair the defect at no charge, using new or refurbished replacement parts or 2) Replace the product with a new product that is at least functionally equivalent to the original product. A replacement product or part, including a user-installable part installed in accordance with instructions provided by bēm wireless, assumes the remaining warranty of the original product. When a product or part is exchanged, any replacement item becomes your property and the replaced item becomes bēm wireless’s property.

**Obtaining Service:** To obtain warranty service, call bēm wireless at 1-815-337-0541 or e-mail [customerservice@bemwireless.com](mailto:customerservice@bemwireless.com). Please be prepared to describe the product that needs service and the nature of the problem. A purchase receipt will be required. All repairs and replacements must be authorized in advance. Service options, parts availability and response times will vary. You are responsible for delivery including the cost of delivery of the product or any parts to the authorized service center for replacements, per our instructions.

**Limits and Exclusions:** Coverage under this Limited Warranty is limited to the United States of America, including the District of Columbia and the U.S. Territories of Guam, Puerto Rico and U.S. Virgin Islands. This Limited Warranty applies only to products manufactured by or for bēm wireless that can be identified by the bēm wireless trademark, trade name, or logo affixed to them or its packaging. The Limited Warranty does not apply to any non-bēm wireless products.

bēm wireless  
1725 Kilkenny Court  
Woodstock, IL 60098 USA  
[www.bemwireless.com](http://www.bemwireless.com)

©2016 bēm wireless All Rights Reserved.

Made in China

**bemwireless.com**

bēm wireless | 1725 Kilkenny Court | Woodstock IL 60098

© 2016 bēm wireless