

Lazy pad

Model: BSTKPB01, EL-120B
Quick User Manual

Product Name: Lazy pad Bluetooth

Applicant: E-LEAD ELECTRONIC CO., LTD.



- Driver can be downloaded from Noahpad official website <http://www.noahpad.com>

BT PAIRING MODE

- LED Indicators Status Description :
Power/ Pair : When the LED flashes quickly, LazyPad is searching the last connected device.
Power/ Pair : When the LED flashes slowly, LazyPad is accessing pairing mode and will pair other BT device.
Power/ Pair : When the LED is On, pairing procedure is completed.
Power/ Pair : When the LED is Off, LazyPad is off.

LED Indicators



LOW-BATTERY WARNING AND CHARGING

LED Indicators Status Description:

Battery : When the LED flashes, LazyPad is under low-power status.

Battery : When the LED is ON, LazyPad is charging.

Battery : When the LED is off, LazyPad power charging is completed.

When the Battery LED flashes, it stands for LazyPad is under low-power status, please charge it as soon as you can.

LazyPad can be charged via USB interface.

The Battery LED is ON stands for LazyPad is charging. User still can use LazyPad while it's charging via the connection of USB cable. And when charge is completed after 1~2 hours or so, user can proceed using wireless mode.

Auto Standby

For saving power consumption, LazyPad will enter Standby mode automatically when it is not operated over 5 minutes. And user can push LazyPad button to awake it from Standby mode.

Auto Turn off

For saving power consumption, LazyPad will turn off automatically when it is not operated over 2 hours. And user can push the power switch in the back of LazyPad to restart it again.

The main procedure of BT connection

- Here are some descriptions of connection method of LazyPad and Notebook which has built-in BT function.

Connecting to the NB for the first time

1. Turn on LazyPad → LazyPad will search the last connected device → If failed, LazyPad will access pairing mode automatically.
2. Activate the BT setup menu of NB → detect BT device → detect the service contracts that provided by BT device manufacturer → register setup information (The function of auto-connection will be activated after completion of register, when users turn on LazyPad next time, these two devices will connect automatically.)

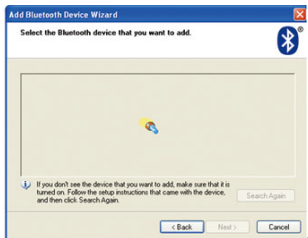


a-1 Add a Bluetooth Device

Users can find BT icon on the lower right side of desktop, and then right click the BT icon and select the “add new BT device”

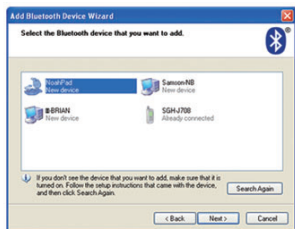


And the left window will come out, please check”My device is set up and ready to be found”, then select “next step” (The LED indicator status of LazyPad should be “flash slowly” for this step, please check.)



b. Search BT device

And then the window of searching BT devices around NB will come out.



c. Select the BT device named LazyPad

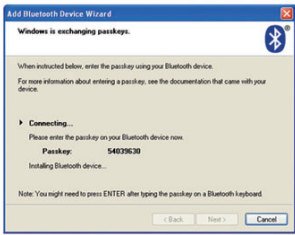
After the completion of searching, some BT devices around users will be listed. And select the device named LazyPad.

Note: In some cases, the name of LazyPad won't be showed in the searched list but Arabic numeral (ID NO.) instead. Please compare the ID NO. back on LazyPad and the searched list, and then select the same ID No. to complete this step.



d. Passkey

Next, an inquiry window will come out and inquiry about if needs code for verification or not. And select “Choose a passkey for me”, the device will automatically respond passkey to BT device. And then select “Next step”



e.Verification

The system will start to connect and verify passkey, and activate related services.



And then select “Finish”.

Attention

- All the set up steps mentioned above are needed just for the first time use. The next time use, it will proceed pairing mode automatically, and no need to re-set up.

Connecting for the second time

- When users turn on LazyPad , the LazyPad will connect the last connected device.
- Turn on LazyPad → Pair LED flashing → Pair LED on to stop flashing that has been connected successfully ◦

Identification of BT devices

Your PC or NB maybe will search many BT devices around, and there are two methods to identify LazyPad.

1. Name of BT device: LazyPad
2. ID NO. of BT device: If the device name isn't showed in searching list, you could check the ID NO. in the back of LazyPad and find out the same ID NO. in searching list.



E-LEAD ELECTRONIC CO.,LTD.

NO. 37, GUNGDUNG 1ST RD., SHENGANG SHIANG, CHANGHUA, 509, TAIWAN
(Chuan-Hsin Industrial Park)

TEL: +886-4-7977277

FAX: +886-4-7977165

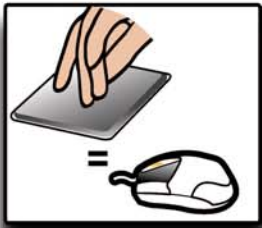
http://www.e-lead.com.tw

E-mail: sales@e-lead.com.tw

CHINA SUBSIDIARY (JIANGSU E-LEAD) TEL: +0512-63404789 FAX: +0512-63404533

Various Usage Mode

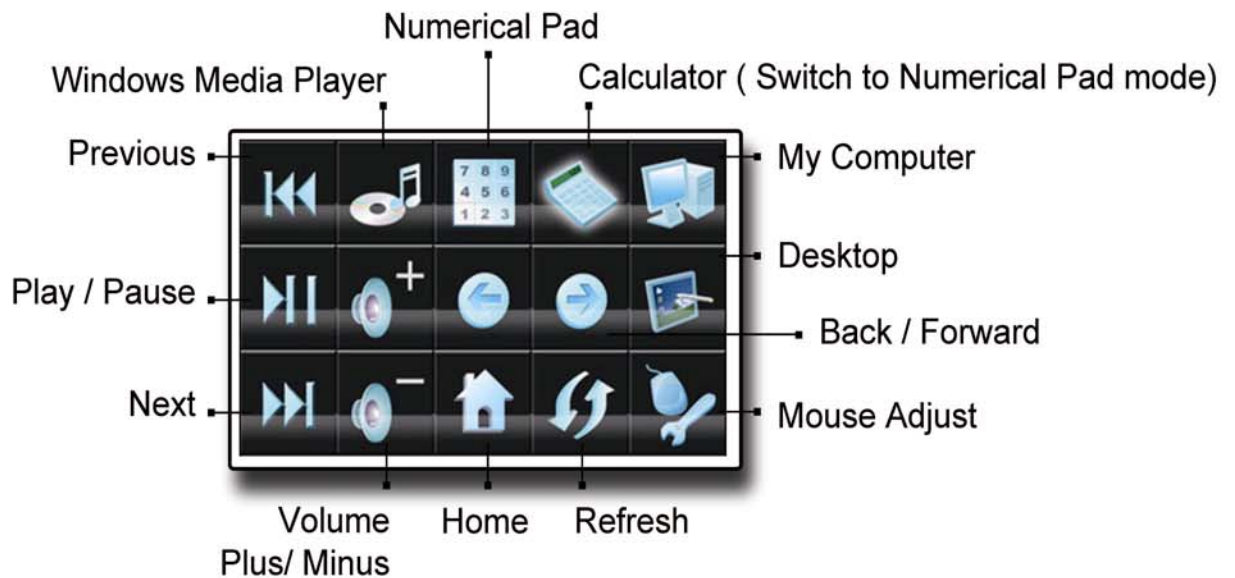
Mouse Mode



Numerical Pad Mode

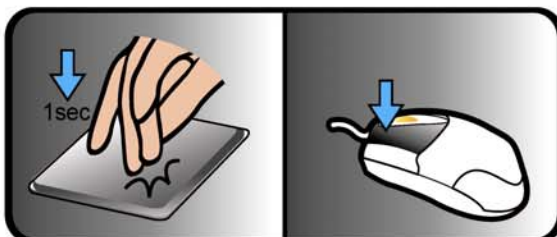


Hotkey Menu

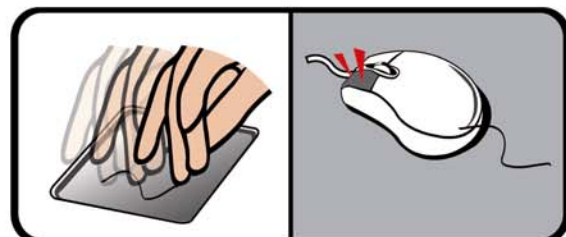


Basic Operation

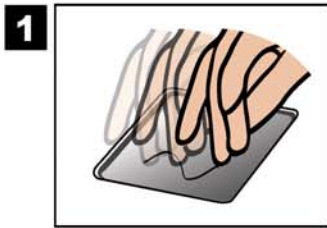
Short Press = Left click



Slide=Moving mouse

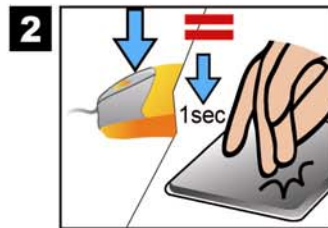


Operation



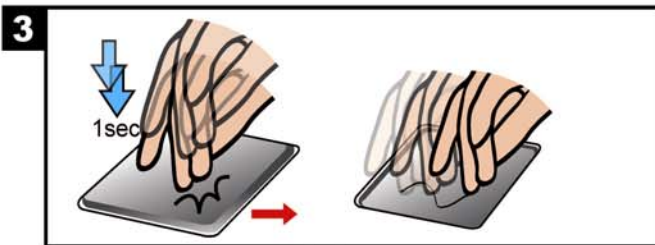
Slide:

Same with touch pad



Short press & short leaving:

Left click



Press & slide:

Drag / Auto Drag

⚠ Attention

- Drag: Press & slide
- Auto Drag : Press & Slide. The cursor will hold still (Do not release your finger), then move straightly & automatically

4



Touch = Cursor quick moving

Touch on pad for cursor corresponding position instantly teleport



5



+ Enlarge

- Shrink

6



→ Scroll right

← Scroll left

7



Scroll up / down

8



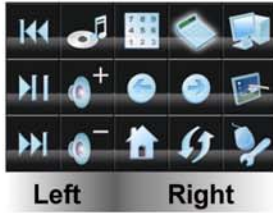
Windows switch

9



**Hotkey Menu Trigger
On /Off**

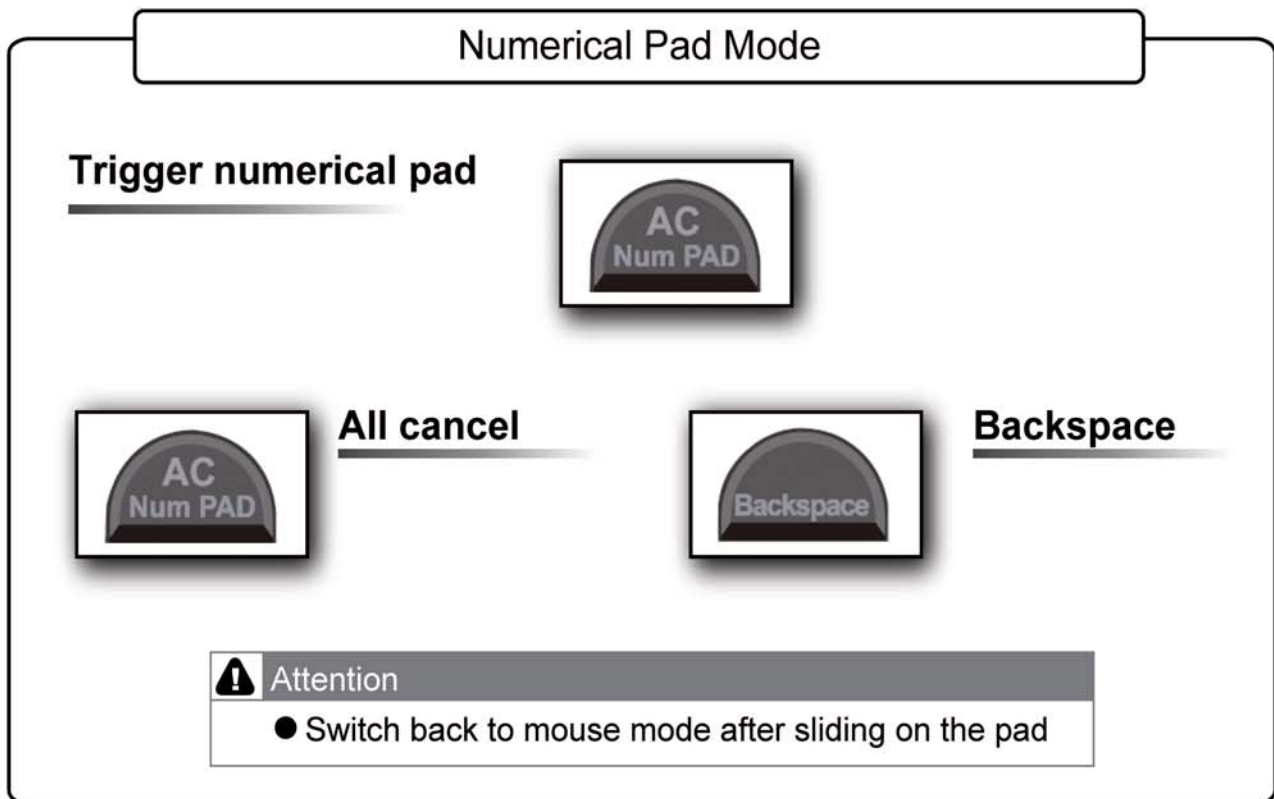
Hotkey Menu Trigger On / Off



1. Click 9 hotkeys at the right side, Hotkey Menu closed after certain hotkey triggered.
2. Click 6 hotkeys at the left side, Hotkey Menu remains after certain hotkey triggered.

Attention

- The cursor leaves the Hotkey Menu over 1 second, the Hotkey Menu will be closed.



- Driver can be downloaded from Noahpad official website <http://www.noahpad.com>
- You can also download the operating demonstration from the official website.

Federal Communications Commission (FCC) Statement

This equipment has been tested and found to comply with the limits for a Class B digital device, pursuant to Part 15 of the FCC Rules. These limits are designed to provide reasonable protection against harmful interference in a residential installation. This equipment generates, uses and can radiate radio frequency energy and, if not installed and used in accordance with the instructions, may cause harmful interference to radio communications. However, there is no guarantee that interference will not occur in a particular installation. If this equipment does cause harmful interference to radio or television reception, which can be determined by turning the equipment off and on, the user is encouraged to try to correct the interference by one of the following measures:

- Reorient or relocate the receiving antenna.
- Increase the separation between the equipment and receiver.
- Connect the equipment into an outlet on a circuit different from that to which the receiver is connected.
- Consult the dealer or an experienced radio/TV technician for help.

FCC Caution: Any changes or modifications not expressly approved by the party responsible for compliance could void the user's authority to operate this equipment.

This device complies with Part 15 of the FCC Rules. Operation is subject to the following two conditions: (1) This device may not cause harmful interference, and (2) this device must accept any interference received, including interference that may cause undesired operation.

This equipment complies with FCC RF radiation exposure limits set forth for an uncontrolled environment. To maintain compliance with FCC RF exposure compliance requirements, please avoid direct contact to the transmitting antenna during transmitting.

" This equipment must be installed and operated in accordance with provided instructions and the antenna(s) used for this transmitter must be installed to provide a separation distance of at least 20 cm from all persons and must not be co-located or operating in conjunction with any other antenna or transmitter. End-users and installers must be provide with antenna installation instructions and transmitter operating conditions for satisfying RF exposure compliance. "