



User's Manual

Ematic 7.9" HD Dual-Core Tablet with Android™ 4.4, KitKat®

EGD078

Since the tablet software updates regularly, the user manual may not cover all aspects of new features.

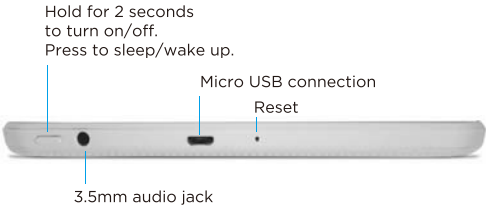
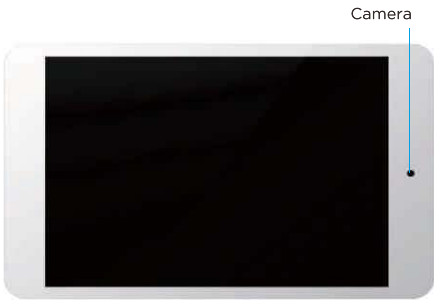
Important Notices

- The new battery will be in its best condition after being fully charged and discharged 2-3 times.
- While using earphones, if the volume is excessively high it may cause hearing damage. Please adjust the volume of the player to a safe level and moderate during use.
- Do not disconnect the tablet suddenly when formatting or uploading and downloading, which can lead to program errors.
- Do not dismantle the tablet by yourself, and do not use alcohol, thinner or benzene to clean its surface.
- Do not use the tablet while driving or walking.
- The tablet is not moisture and water resistant. Please do not use it in a damp environment.
- Do not drop or hit the tablet against a hard surface, or the screen may be damaged or cracked.
- Do not upgrade the firmware by yourself. The tablet should be upgraded with the right firmware and right methods offered by us. If upgrade is needed, please contact us.

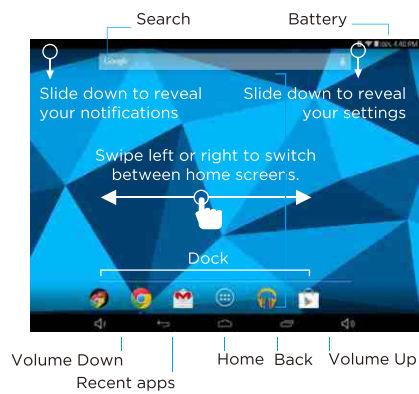
Section 1: Tablet Overview	4
Tablet Overview	4
Screen Basics	5
Touch Screen Basics	5
Section 2: Initial Setup	6
Charging	6
Turn on	6
Setting up your Google™ Account	7
Getting Started	7
Section 3: Your Home Screen	8
Icons	8
Adding Icons	9
Moving Icons	9
Removing Icons	9
Take a Screenshot	9
Sleep Mode	10
Notifications	10
Change the Wallpaper	11
Section 4: Network Connection	12
Turn On/Off Wi-Fi	12
Adding a Wi-Fi Network	13
Section 5: Connecting to a Computer	14
PC	14
Mac	15
Section 6: Using the Keyboard	16
Entering Text	16
Gesture Typing	17
Basic Editing	18
Keyboard settings	18
Section 7: Exploring Apps	19
Clock	19
Camera	19
Included Apps	20
Uninstalling Apps	22
Section 8: Google Accounts	23
Why use a Google Account?	23
Add a Google Account	23
Remove a Google Account	24
Google Play™	25
Google Play recommendations	25

Google Play Store app	25
Section 9: Google Now	26
Google Now Cards	26
Location Access	27
Google Now Settings	27
Section 10: Voice Actions	29
Voice Commands	30
Section 11: Tablet Settings	31
Section 12: Tips & Tricks	32
Extending Battery Life	32
Reset/Restore	33
Troubleshooting	33
Technical Specifications	34
Customer Support	34
Limitations of Liability Statement	35

1. Tablet Overview



Screen Basics



Touch Screen Basics

Tap the screen once to activate or open something.



Touch and hold to move an item by dragging.

*In many apps touch and hold can offer more options.



Zooming: Double tap quickly to zoom into a webpage, picture, or map. Some apps allow you to zoom in and out by touching the screen with two fingers, and pinching them together.



TIP: You can flick the screen with your finger to quickly scroll through a long list, such as a library of music.

Tap a specific location on the screen where you would like to enter text. The on-screen keyboard will pop up.

2. Initial Setup

Charging

Fully charge your tablet for 6 hours before the first use.



Use the included USB wall charger.



The battery indicator will show that your device is charging.



Attention: Charging by connecting to a computer will be extremely slow. We recommend only using the included wall charger.

Turn on

To start your tablet, press and hold the power key for 2 seconds. The Ematic logo indicates that the tablet is loading.

Once the screen loads, choose your language and connect to your Wi-Fi network. You will then be prompted to sign in to your Google Account.

Setting up your Google Account


Sign in using the email address and password from your Google Account. If you don't have one yet, create one.

An email address that you use for any of the following counts as a Google Account:

- Gmail™
- YouTube™
- Google Apps™
- AdWords™
- Any other Google product

When you sign in with a Google Account, all your email, contacts, Calendar events, and other data associated with that account are automatically synced with your tablet. You can also add multiple Google Accounts later.

Getting Started

Once your tablet loads, you will see a Welcome Screen. Tap OK to begin using your tablet. Tap  to customize your Home Screen with apps and widgets.



3. Your Home Screen

Icons

You can fill the home screen with any combinations of shortcuts, widgets, and folders you like.

When you power up your tablet for the first time, you'll see the main home screen panel. This panel is typically centered; you can access additional panels on either side of the main one by swiping your finger left or right.



Battery Level: The white battery level indicator will decrease and change to red as the battery is drained.



Wi-Fi Signal: As the Wi-Fi signal strength decreases, the blue bands will change to grey.



All Apps: Tap to view all apps.



Back: Go back to the previous screen.



Recent apps: Open a list of recent apps. Tap an app to open or swipe left/right to remove the thumbnail.



Home: Go back to the home screen. Hold and slide up to open Google Now.



Increase Volume



Decrease Volume

Adding Icons



Within the All Apps menu, choose an app or swipe right to choose a widget. Tap and hold desired app or widget for about 2 seconds until the Home screen appears. Slide it wherever you want and let go.

Moving Icons

Touch & hold the icon.

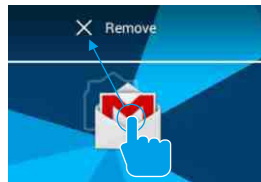
Slide your finger to the new position.

(To move between Home screens, slide toward the edge of the screen. To bump another icon out of the way, slide slowly towards it.)

Lift your finger to drop the icon into its new position.

Removing Icons

Touch and hold the app or widget and drag to the X icon at the top of the screen.



Take a Screenshot

Make sure the image you want is displayed on the screen. Press the Power Button and the Decrease Volume Icon on your screen simultaneously.

You can also tap the Screenshot icon in your Quick Settings by swiping down from the top right of your screen.



The screenshot is automatically saved to your Gallery.

Sleep Mode

To save battery, you should put your tablet in sleep mode by turning off the LCD display. To do this, press the power key and immediately release it. Do it again to bring up the lock screen.

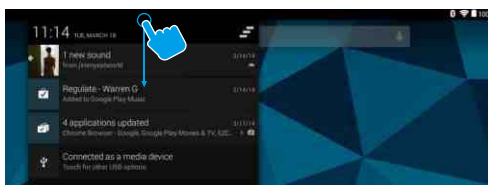


Notifications

Swipe down from the top right of your Home Screen to view your Quick Settings.



Swipe down from the top left of your Home Screen to view your Notifications.



Change the Wallpaper

Tap and hold your finger on any open space on your home screen. A list of options appears.



Gallery: Choose a wallpaper from your personal gallery

Live Wallpapers: Choose from a scrolling list of animated wallpapers

Photos: Choose a wallpaper from your personal photos

UHD Player: Play videos and view photos

Wallpapers: Choose from thumbnails of default images

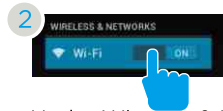
4. Network Connection

Wi-Fi can only be used when it connects with a Wi-Fi Access Point (AP) or a free unsecured Wi-Fi hotspot.

Turn on Wi-Fi



Within the All Apps menu, tap Settings.



Under Wireless & Networks, tap the Wi-Fi switch to turn it on and scan for networks.

Your tablet will list the networks it finds within range. Tap a network to connect.



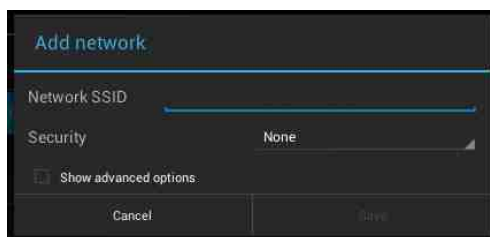
When connected, the wireless indicator appears in the status bar. The white lines indicate connection strength.📶

Turn off Wi-Fi

Tap the Wi-Fi ON switch under Wireless & Networks. Turn off Wi-Fi when you're not using it to extend the life of your battery between charges.

Adding a Wi-Fi Network

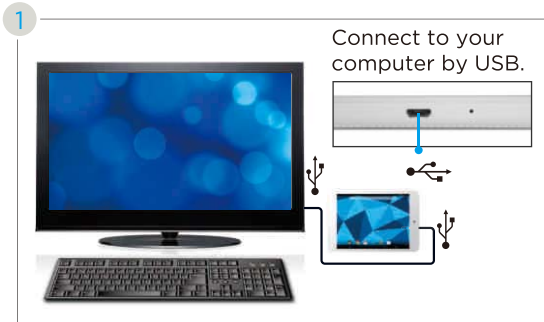
Users may also add a Wi-Fi network under Wi-Fi settings.



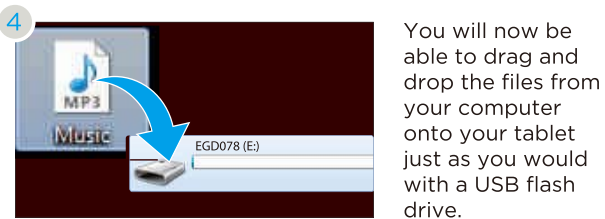
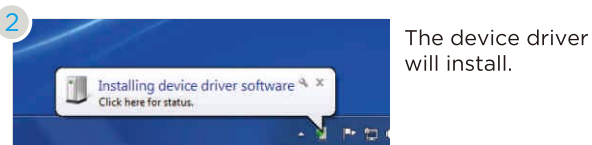
Forget a Wi-Fi Network

In the Wi-Fi settings screen, tap the name of the network. Tap “Forget” in the dialog that opens.

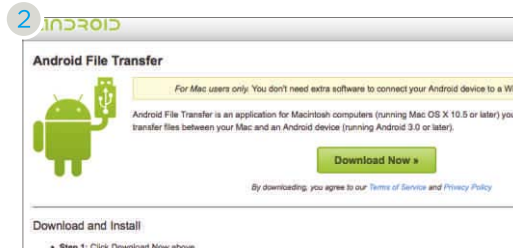
5. Connecting to a Computer



PC

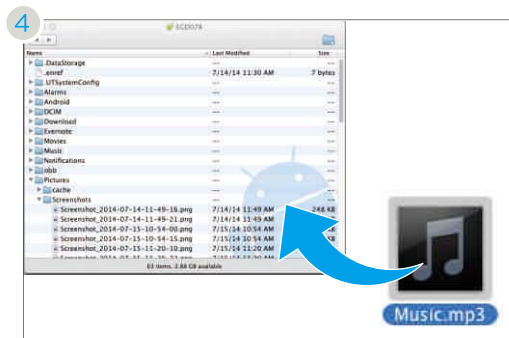


Mac



First, install the Android File Transfer application for Mac. Go to android.com/filetransfer on your Mac and choose download now.

3. Install the application.



The Android File Transfer application will launch automatically when you connect your tablet. Drag & drop files to transfer.

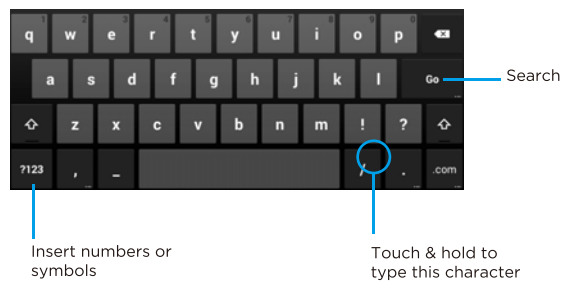
6. Using the Keyboard

Entering text

Enter text using the onscreen keyboard. In most apps it will open automatically. In others, open the keyboard by touching where you want to type.

*Depending on what you are doing, some of the keys on the keyboard may look different. Keyboard A&B appears when you are searching or browsing the net. Keyboard C appears when you are writing emails, documents, or messaging.

Keyboard A:




Keyboard B:



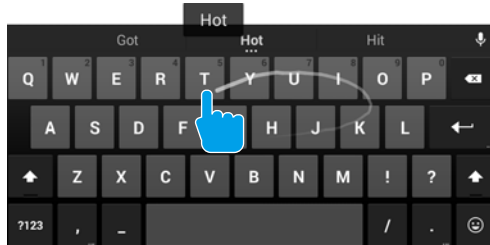
Keyboard C:



To make the keyboard go away, touch the modified Back button  at the bottom of the screen.

Gesture Typing

Swipe your finger over letters you want to type, and lift after each word. The keyboard will anticipate and predict the next word in your sentence.





Basic Editing




Move the insertion point: Touch where you want to type. The cursor will blink in the new position and a blue tab will appear below it. Drag the tab to move the cursor.

Select text: Touch & hold or double-tap within the text. The nearest word will be highlighted and blue tabs will appear. Drag tabs to edit selection.

Delete text: Touch  to delete characters or selected text.

Insert Capital Letters: Tap the  key once to insert one capital letter. Or hold  key while you type.

Turn on caps lock: Double-tap  key. It will turn into . Tap again to return to lowercase.

Cut, Copy, Paste: Select the text you want to manipulate. When highlighted, touch  Cut,  Copy, or  Paste.



Keyboard Settings



Input languages: Select different languages to be included when typing.

Android Keyboard Settings: Edit keyboard settings such as Auto-capitalization, Sound, Auto correction, and Input methods & styles.