



User's Manual

Ematic 7" HD Quad-Core Tablet with Android™ 5.0, Lollipop

EGQ347

Since the tablet software updates regularly, the user manual may not cover all aspects of new features.

Important Notices

- The new battery will be in its best condition after being fully charged and discharged 2-3 times.
- While using earphones, if the volume is excessively high it may cause hearing damage. Please adjust the volume to a safe level and moderate use.
- Do not disconnect the tablet suddenly when formatting, uploading, or downloading.
- Do not dismantle the tablet. Do not use alcohol, thinner or benzene to clean its surface.
- Do not use the tablet while driving or walking.
- The tablet is not moisture and water resistant. Please do not use it in a damp environment.
- Do not drop or hit the tablet against a hard surface or the screen may be damaged or cracked.
- Do not upgrade the firmware by yourself. The tablet should be upgraded with the right firmware and right methods offered by us. If an upgrade is needed, please contact us.

Section 1: Tablet Overview	4
Tablet Overview	4
Screen Basics	5
Touch Screen Basics	5
Section 2: Initial Setup	6
Charging	6
Turn on	6
Setting up your Google™ Account	7
Getting Started	7
Section 3: Your Home Screen	8
Icons	8
Adding Icons	9
Moving Icons	9
Removing Icons	9
Take a Screenshot	9
Sleep Mode	10
Notifications	10
Manage Notifications & Interruptions	11
Change the Wallpaper	11
Section 4: Network Connection	12
Turn On/Off Wi-Fi	12
Adding a Wi-Fi Network	13
Forget a Wi-Fi Network	13
Section 5: Connecting to a Computer	14
PC	14
Mac	15
Section 6: Using the Keyboard	16
Entering Text	16
Gesture Typing	17
Basic Editing	18
Keyboard settings	18
Section 7: Exploring Apps	19
Clock	19
Camera	19
Included Apps	20
Uninstalling Apps	22
Section 8: Google Accounts	23
Why use a Google Account?	23
Add a Google Account	24
Remove a Google Account	24

Google Play™	25
Google Play recommendations	26
Google Play Store app	26
Section 9: Google Now	27
Google Now Cards	27
Location Access	27
Google Now Settings	29
Section 10: Voice Actions	30
Voice Commands	31
Section 11: Tablet Settings	32
Section 12: Tips & Tricks	32
Extending Battery Life	33
Reset/Restore	33
Troubleshooting	34
Technical Specifications	34
Customer Support	35
Limitations of Liability Statement	35

1. Tablet Overview

Camera



Hold for 2 seconds to turn on/off. Press to sleep/wake up. Hold for 6-10 seconds to reset device.

Volume Up/Down

Microphone



Speaker

Camera

MicroSD card slot

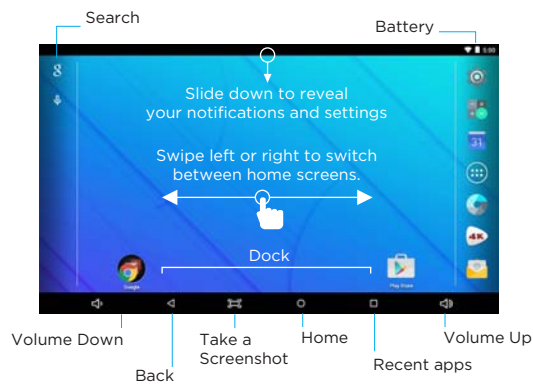
Reset

Micro USB connection



3.5mm audio jack

Screen Basics



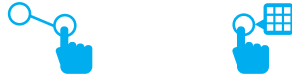
Touch Screen Basics

Tap the screen once to activate or open something.



Touch and hold to move an item by dragging.

*In many apps touch and hold can offer more options.



Zooming: Double tap quickly to zoom into a webpage, picture, or map. Some apps allow you to zoom in and out by touching the screen with two fingers, and pinching them together.



TIP: You can flick the screen with your finger to quickly scroll through a long list, such as a library of music.

Tap a specific location on the screen where you would like to enter text. The on-screen keyboard will pop up.

2. Initial Setup

Charging

Fully charge your tablet for 6 hours before the first use.



Use the included USB wall charger.



The battery indicator will show that your device is charging.



Attention: Charging by connecting to a computer will be extremely slow. We recommend only using the included wall charger.

Turn on

To start your tablet, press and hold the power key for 2 seconds. The Ematic logo indicates that the tablet is loading.

Once the screen loads, choose your language and connect to your Wi-Fi network. You will then be prompted to sign in to your Google Account.

Setting up your Google Account


Sign in using the email address and password from your Google Account. If you don't have one yet, create one.

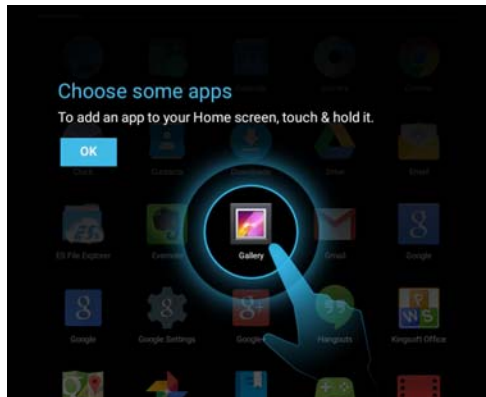
An email address that you use for any of the following counts as a Google Account:

- Gmail™
- YouTube™
- Google Apps™
- AdWords™
- Any other Google product

When you sign in with a Google Account, all your email, contacts, Calendar events, and other data associated with that account are automatically synced with your tablet. You can also add multiple Google Accounts later.

Getting Started

Once your tablet loads, you will see a Welcome Screen. Tap OK to begin using your tablet. Tap  to customize your Home Screen with apps and widgets.



3. Your Home Screen

Icons

You can fill the home screen with any combinations of shortcuts, widgets, and folders you like.

When you power up your tablet for the first time, you'll see the main home screen panel. This panel is typically centered; you can access additional panels on either side of the main one by swiping your finger left or right.



Battery Level: The white battery level indicator will decrease and change to red as the battery is drained.



Wi-Fi Signal: As the Wi-Fi signal strength decreases, the blue bands will change to grey.



All Apps: Tap to view all apps.



Back: Go back to the previous screen.



Recent apps: Open a list of recent apps. Tap an app to open or swipe left/right to remove the thumbnail.



Home: Go back to the home screen. Hold and slide up to open Google Now.



Increase Volume



Decrease Volume

Adding Icons



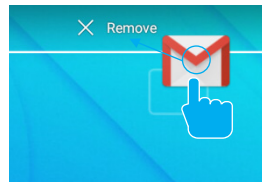
Within the All Apps menu, choose an app or swipe right to choose a widget. Tap and hold desired app or widget for about 2 seconds until the Home screen appears. Slide it wherever you want and let go.

Moving Icons

Touch & hold the icon.
Slide your finger to the new position.
(To move between Home screens, slide toward the edge of the screen. To bump another icon out of the way, slide slowly towards it.)
Lift your finger to drop the icon into its new position.

Removing Icons

Touch and hold the app or widget and drag to the X icon at the top of the screen.



Take a Screenshot

Make sure the image you want is displayed on the screen. Press the Power Button and the Volume Down button simultaneously. Or press the Screenshot icon on the status bar to take a screenshot.

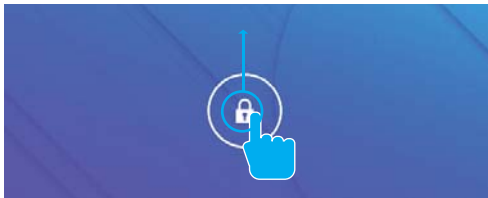
You can also display or hide the screenshot button on the status bar in the settings menu.



The screenshot is automatically saved to your Gallery.

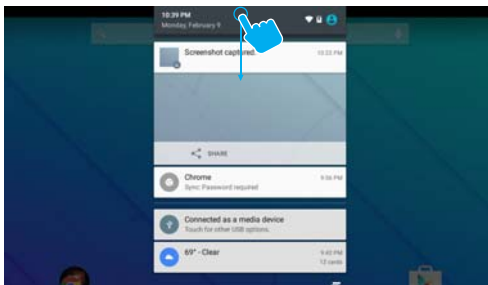
Sleep Mode

To save battery, you should put your tablet in sleep mode by turning off the LCD display. To do this, press the power key and immediately release it. Do it again to bring up the lock screen.

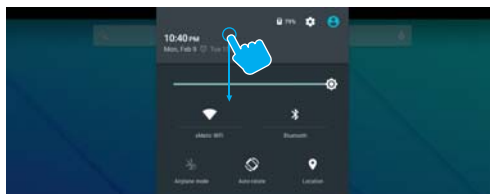


Quick Settings & Notifications

Swipe down from the top of your Home Screen to view your Notifications.



Use two fingers to swipe from the top of your Home Screen or swipe down again from notifications to view your Quick Settings.

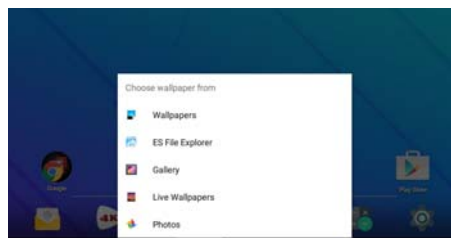


Manage Notifications and Interruptions

Tap on Sound & notification in the Settings Menu. You can manage what notifications you see, set notification priority level by app, and see what apps have access to your notifications. You can set up your device so that notifications only appear on at certain times, for certain types of notifications, and from specific contacts.

Change the Wallpaper

Tap and hold your finger on any open space on your home screen. A list of options appears.



Wallpapers: Choose from thumbnails of default images

ES File Explorer: Choose a wallpaper from a specific folder on your tablet

Gallery: Choose a wallpaper from your personal gallery

Live Wallpapers: Choose from a scrolling list of animated wallpapers

Photos: Choose a wallpaper from your personal photos

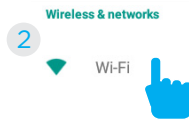
4. Network Connection

Wi-Fi can only be used when it connects with a Wi-Fi Access Point (AP) or a free unsecured Wi-Fi hotspot.

Turn on Wi-Fi

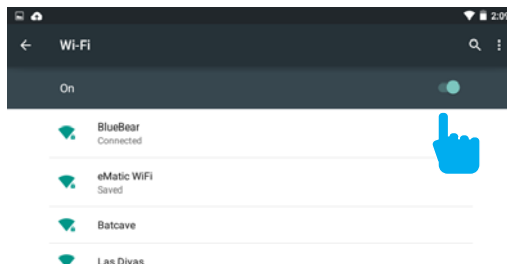


Within the All Apps menu, tap Settings.



Under Wireless & Networks, tap on Wi-Fi.

Your tablet will list the networks it finds within range. Switch the button at the top to on and scan for networks. Tap a network to connect.



When connected, the wireless indicator appears in the status bar. The white lines indicate connection strength.📶

Turn off Wi-Fi

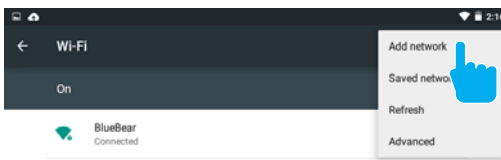
Tap the Wi-Fi ON switch under Wireless & Networks. Turn off Wi-Fi when you're not using it to extend the life of your battery between charges.

Adding a Wi-Fi Network

Users may also add a Wi-Fi network by pressing the Menu icon in the top right corner.



Select Add network.



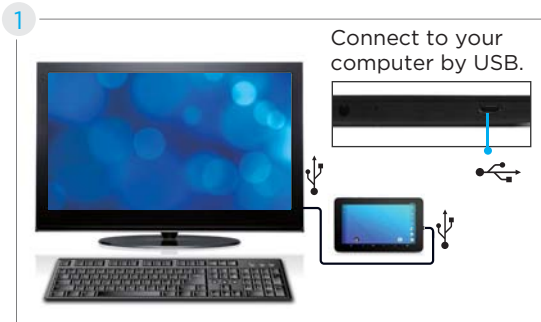
Add the network information to connect.



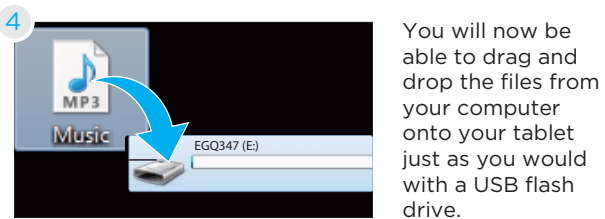
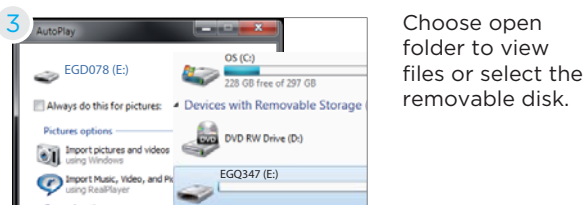
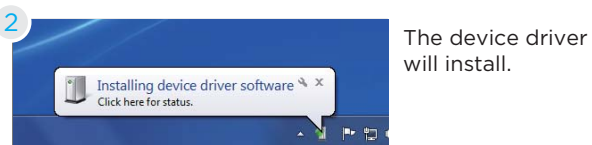
Forget a Wi-Fi Network

In the Wi-Fi settings screen, tap the name of the network. Tap "Forget" in the dialog that opens.

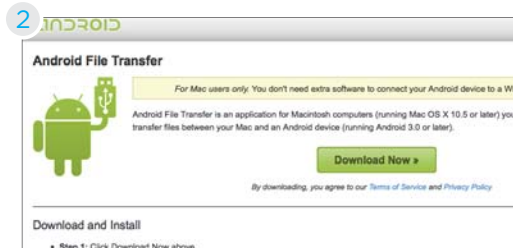
5. Connecting to a Computer



PC

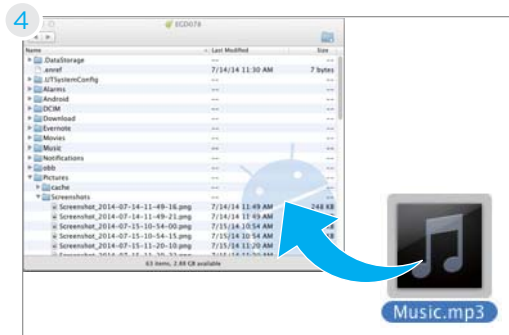


Mac



First, install the Android File Transfer application for Mac. Go to android.com/filetransfer on your Mac and choose download now.

3. Install the application.



The Android File Transfer application will launch automatically when you connect your tablet. Drag & drop files to transfer.

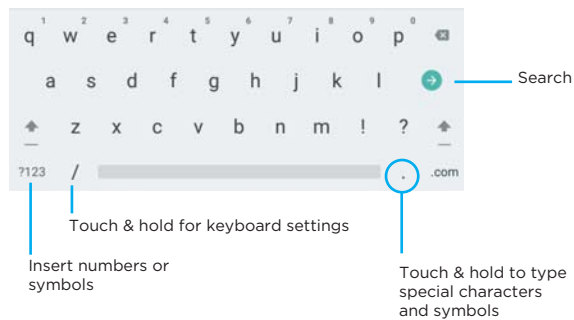
6. Using the Keyboard

Entering text

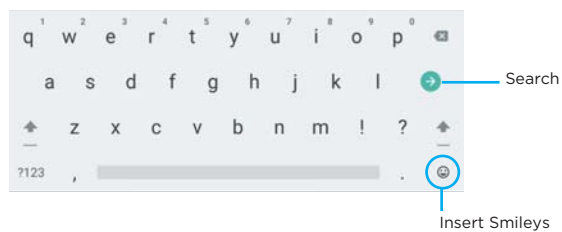
Enter text using the onscreen keyboard. In most apps it will open automatically. In others, open the keyboard by touching where you want to type.

*Depending on what you are doing, some of the keys on the keyboard may look different. Keyboard A&B appears when you are searching or browsing the net. Keyboard C appears when you are writing emails, documents, or messaging.

Keyboard A:




Keyboard B:



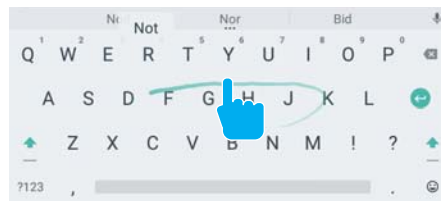
Keyboard C:



To make the keyboard go away, touch the modified Back button  at the bottom of the screen.

Gesture Typing

Swipe your finger over letters you want to type, and lift after each word. The keyboard will anticipate and predict the next word in your sentence.





Basic Editing




Move the insertion point: Touch where you want to type. The cursor will blink in the new position and a blue tab will appear below it. Drag the tab to move the cursor.

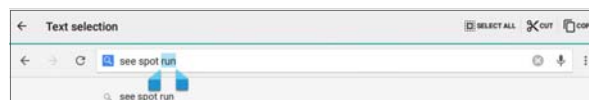
Select text: Touch & hold or double-tap within the text. The nearest word will be highlighted and blue tabs will appear. Drag tabs to edit selection.

Delete text: Touch  to delete characters or selected text.

Insert Capital Letters: Tap the  key once to insert one capital letter. Or hold  key while you type.

Turn on caps lock: Double-tap  key. It will turn into . Tap again to return to lowercase.

Cut, Copy, Paste: Select the text you want to manipulate. When highlighted, touch  Cut,  Copy, or  Paste.



Keyboard Settings



Input languages: Select different languages to be included when typing.

Android Keyboard Settings: Edit keyboard settings such as Auto-capitalization, Sound, Auto correction, and Input methods & styles.

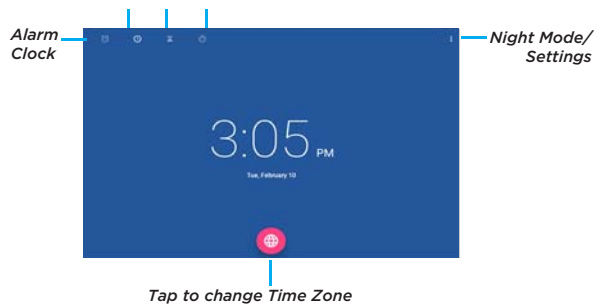
7. Exploring Apps

Open up some Apps to better familiarize yourself with your new tablet.



Tap the Clock app to access your alarm clock, timer, or stopwatch.

Clock Timer Stopwatch



Tap the camera app to take pictures and videos to share with your friends and family.

Taking Photos:

- Make sure the icon bar on the left is the camera icon
- Tap the camera icon to take a photo
- To zoom pinch two fingers together on the screen.
- Tap the menu icon in the top right corner for camera settings

To switch to video record, swipe right from the left side of the screen. Select the video icon. You can also change the resolution settings and try advanced features.

Recording Video:

- Make sure the icon bar on the left is the video icon
- Tap the video icon to start recording
- To zoom pinch two fingers together on the screen.
- Tap the video icon again to stop recording
- While recording you can tap anywhere on the screen to take a picture.
- Tap the menu icon in the top right corner for video settings

Included Apps



Browser: Browse the web



Calculator: Basic calculator functions



Calendar: Keep track of your schedule and set reminders



Camera: Take photos and record videos



Chrome™: Browse the web with Google Chrome.



Clock: Set the time and alarms



Contacts: Manage your contacts



Downloads: Manage your downloads



Drive: Share your Google Docs and files



Email: Sync your email accounts
















ES File Explorer: Browse for files to open, delete, etc.



Evernote: Keep notes and to-do lists



Gallery: View and edit your photos

-  **Gmail:** Fast, searchable email from Google
-  **Google:** Stay up to date with Google Now cards
-  **Google Settings:** Edit your Google Account settings
-  **Google+™:** Stay connected and share life as it happens with Google+
-  **Hangouts™:** One-on-one and group conversations with photos, emoji, and video calls for free.
-  **Kingsoft Office:** Type documents, make spreadsheets and presentations
-  **Maps™:** Find directions and locations
-  **Photos:** Share photos and back them up on Google.
-  **Play Books:** Read your favorite e-books
-  **Play Games:** Discover new games. Track achievements and scores
-  **Play Movies & TV:** Stream movies & TV shows instantly
-  **Play Music:** Discover, play, store and share the music you love
-  **Play Newsstand:** Read magazines and the latest headlines



Play Store: Shop for music, books, magazines, movies, TV shows, games and apps



Pogoplug: Connect to the internet to access and share your files. Includes 5GB of cloud storage



Settings: Adjust settings on your tablet



Sound Recorder: Record audio using the built-in microphone



VideoPlayer: Video and image gallery



Voice Search: Search the web by speaking instead of typing



YouTube: Stream your favorite videos on the web

Uninstalling Apps

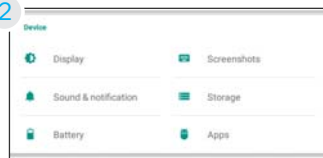
To Uninstall an unwanted App:

1



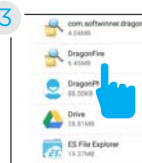
Tap Settings

2

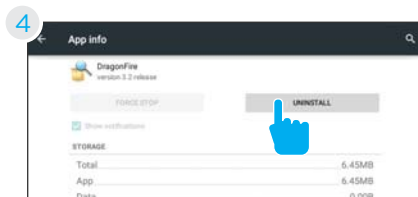


Under Device, tap Apps.

3



Tap the App that you want to uninstall.



Tap Uninstall

8. Google Accounts

Why use a Google Account?

Google Accounts let you organize and access your personal information from any computer or mobile device.

Sync & Back-up: Whether you draft an email, add a contact, or add an event to your calendar, your work continuously gets backed up and synchronizes with any computer with the same Google Account.

Accessibility: Check your latest emails, events, or text messages wherever you are on any computer or mobile device.

Security: Google works round the clock to ensure your private information stays secure.

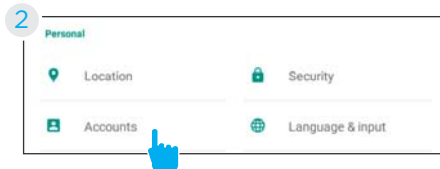
Shopping: Connect your Google Account with your Google Wallet™ to easily purchase music, books, apps, and more on Google Play and other online stores.

Services: Your Google Account also lets you take full advantage of other Google apps and services such as YouTube, Google Play, Hangouts, Google Maps, Messaging, and more.

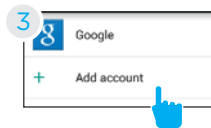
Add a Google Account



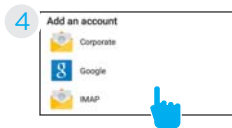
Tap Settings.



Under Personal, tap Accounts.



Tap Add account.

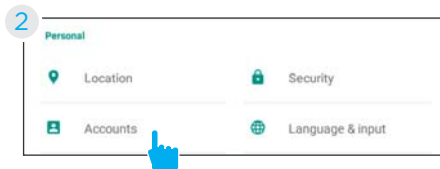


Tap what kind of account you want to add and sign in.

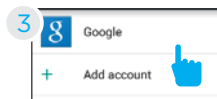
Remove a Google Account



Tap Settings



Under Personal, tap Accounts.



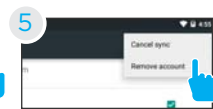
Tap on the type of account that you want to remove.



Tap the account that you want to remove.



Tap Menu icon.



Tap Remove account.

Google Play



Google Play brings together all of your favorite content in one place. Access movies, TV shows, music, books, magazines, apps, and more when you sign in with your Google Account. You can also shop for more games, books, magazines, and more in the Google Play Store app.

Google Play

My Library: Displays your most recently used books, music, and so on. Tap any of the images to view your content.

Recommended Apps: Recommends apps that you can add to your home screen.

All Google Play recommendations work the same way:



Tap to see a different suggestion



Tap to avoid future suggestions like this



Hold and drag blue dots to resize



Play Store

Purchase music, games, books, magazines, movies, TV shows, and apps on the Google Play Store app



Play Books

With Google Play, shop the world's largest eBookstore now with over 5 million books-available on web, tablet, and phone.



Play Newsstand

With Google Play Newsstand, discover more of the news and magazines you love with a newsstand made for you.



Play Movies & TV



Play Music

Choose from thousands of movies and TV shows on Google Play and stream them instantly on your Android phone, tablet or the web.





Buy now, listen now, sync never, with music on Google Play.

9. Google Now™

Google Now uses contextual data from your tablet and from other Google products to supply you with just the right information at just the right time.

You can download the Google Search app on Google Play.

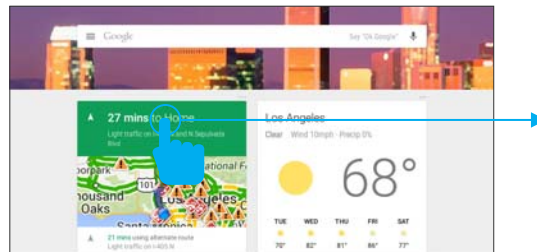
After you have downloaded and installed the Google Search app, tap the  icon on the Home screen or swipe up from the  icon to open Google Now.

Google Now Cards

Google Now displays cards when they're most likely to be useful and relevant based on the current time and your current location.

Find out what the weather is like, how much traffic to expect before you leave for work, or how your favorite sports team is doing.

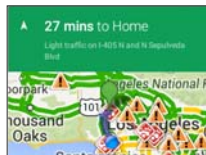
To dismiss a card from the Google Now screen, swipe it away. The card will return the next time it's relevant, which may be hours or days from now.



You can turn Google Now cards on or off at any time. To do so from the main Google Now screen go to Menu < Settings < Google Now and choose a specific card. You can then check or uncheck when you would like that card to appear.

Location Access

Find out what the weather is like or how the commute to work will be by confirming your home and work locations.



Google Now Settings

In order to get to your Google Now settings from the Google Now Main Screen, touch the Menu icon at the bottom right of the screen. Then touch Settings. 4 types of settings will be available.

Google Now: These settings allow you to turn Google Now On or Off. It will also take you through a brief introduction to Google Now and you will be given the chance to opt in. From the settings screen you can also change the priority of cards and also sound settings for notifications.

Voice settings: Voice settings control different aspects of speech input and output.

- Language: Select a language to use for Voice Searches. The Voice Search language can be different from the language displayed by your tablet.
- Speech Output: Select Hands-free only to turn on speech output only when using a headset.
- Block offensive words: Check to ensure that search results with offensive language are blocked.
- Hotword detection: When this is checked, you can say "Google" when viewing the Google Now screen to initiate a voice search or action.

Tablet Search: Select which apps in your tablet are included in Google searches.

Privacy & Accounts: Control search-related privacy options for your Google Account.

- Manage location history: Opens Google Maps settings, where you can turn location settings and location reporting on or off.
- Location: Allows you to turn location access by all Google apps on or off.
- Show recent searches: Check if you want search suggestions based on your recent searches.
- Manage Web History: View your Web History after signing in

10. Voice Actions

After installing the Google Search app you can use Voice Actions to get directions, send messages, and perform a number of other common tasks.

To initiate a Voice Action you can:

- Tap the Microphone in the Google Search Bar on your Home Screen
- Tap the Microphone in your keyboard

Next, speak the Voice Action you want to use. Here are some typical examples:

“Set alarm for 8:30 a.m.”

“Send email to Marcus Foster. Subject: Coming to-night? Message: Hope to see you later.”

“Navigate to Mike’s Bikes in Palo Alto”

As you speak, Voice Search analyzes your speech and initiates the action. If Voice Search doesn’t understand you, it lists a set of possible meanings. Just tap the one you want.

Some Voice Actions, such as “send email” and “note to self,” open a panel that prompts you to complete the action by speaking or typing more information.

When prompted, you can:

- Touch any text already in the panel to add, or edit the text by typing. (You can tap the Microphone icon again to continue speaking instead of typing)
- Touch underlined words or phrases, drag across multiple words to view a list of alternate transcriptions, or edit by speaking or typing.
- Touch a button at the bottom of the window to add any optional fields (you can also speak the name and content of any of these fields)
- When you are done, touch the button appropriate to complete the action, such as Send.

Voice Commands



To initiate a Voice Action touch the Microphone icon

*Voice Actions will only be available after downloading the Google Search app.

Some handy voice commands are:

Say	Followed By	Examples
[Words you want to search for]		"bike shoes"
"Map of"	Address, name, business name, or other destination	"Navigate to Union Square" or "1299 Colusa Ave, Berkeley, CA"
"Go to"	Search string or URL	"Go to Google.com"
"Note to self"	Message text	"Note to self: remember to buy milk"
"Define"	Word to define	"Define campanile"
"Weather"	Location	"Weather Detroit"
"Movie"	Movie location and Movie name	"Movie, Los Angeles, London After Midnight"
"Pictures of"	Topic	"Pictures of cats"
"Translate to"	Language & Phrase	"Translate to French, Where is the restroom?"
[A math phrase]		"75 divided by 6"

11. Tablet Settings

Wi-Fi: Turn Wi-Fi on to see available networks and connect.

Bluetooth: Turn on Bluetooth to sync to another device.

Display: Adjust brightness, change your wallpaper, turn on/off screen rotation, sleep settings, and font size.

Sound & notification: Adjust the volume, notifications, and alarm sounds.

Battery: Provides battery usage data.

Screenshots: Display or hide the screenshot button in the status bar.

Storage: Provides storage use data.

Apps: Tap an app to force stop, uninstall, clear data, move to SD card, or clear data.

Location: Allow google to use data to determine your location for improved search results.

Accounts: Tap to add or remove Email accounts.

Backup & reset: Backup data and factory reset your tablet.

Security: Adjust settings to make your tablet more secure. Allow installation of non-Market apps.

Language & input: Set language, spelling correction, keyboard and voice settings.

Date & time: Set the date, time, and time zone.

Printing: Set up Google Cloud Print to connect your printer to the web.

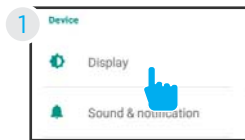
Accessibility: Adjust settings for users with poor vision.

About tablet: Model number and general tablet information.

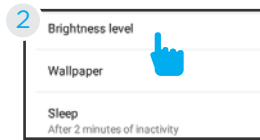
12. Tips & Tricks

Extending Battery Life

Reducing the Brightness of your screen can help extend your battery life.



In Settings, tap Display.

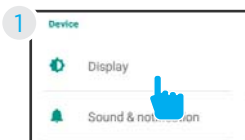


Tap Brightness level.

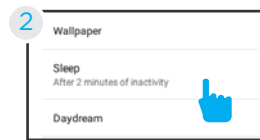


Use the slider to adjust the brightness. Then tap OK.

Use a Quick Screen Timeout.



In Settings tap Display.

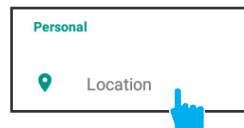


Tap Sleep.

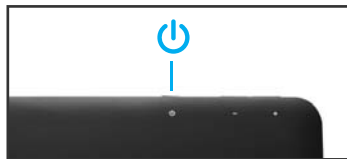


Switch off Wi-Fi if you're not close to a strong signal.

Disable Location Services.

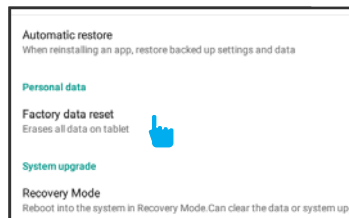


Reset/Restore



Reset Device

Reset the device by pressing the power button for 6-10 seconds.



Factory Restore

Tap Backup & reset in the settings app. Then select Factory data reset to restore factory settings. This will erase all data on the tablet.

Troubleshooting

Cannot turn on the tablet.

Check the tablet's power level. Please charge it before starting it. If your tablet still cannot be turned on, you may reset it before you turn it on.

No sound from earphones.

Check if volume is set to '0'. Or earphone may be broken, please try another one.

Loud static noise.

Check if there is dust in the earphone or speaker. Check if the file is broken.

Frozen to any operation.

Press and hold the power button for 6 seconds to reset the device.

Application is not working.

Possible reasons may be that this app is not compatible with your OS or the downloaded .apk file is broken. You may need to download a full version.

How do I delete a Google account?

If an account is added, the account is shown in Accounts of Settings, where you may also add another account. To delete an undesired account, tap the account, then tap the menu icon in the upper right hand corner and choose Remove account.

Technical Specifications

- Android 5.0, Lollipop
- 7" HD 1024 x 600 Screen
- 1.2GHz Quad-Core Processor
- 512MB RAM
- 8GB flash memory (formatted capacity will be less)
- Front .3MP, Back 2MP Cameras
- Accelerometer
- MicroSD card slot supports up to 32GB
- USB 2.0
- Wi-Fi (802.11b/g/n)
- Bluetooth

Customer Support

Visit ematic.us/support for customer support regarding your device.

To submit a request, fill out the required information online. You will be provided a ticket number regarding your issue which you can refer to when contacting us further.

Limitations of Liability Statement

Limitations of Liability Statement

The Ematic User Manual may contain or reference links to third-party sites, however, please be aware that Ematic is not responsible for and cannot control these other sites. Ematic makes no representations or warranties whatsoever about any other website which you may access as a result of reading this user manual, or otherwise. When you access a website that is not owned or operated by Ematic (a "non-Ematic website"), even one that may contain an Ematic logo, please understand that it is independent from Ematic, and that Ematic has no direct control over the content on such website(s). In addition, a link to any such non-Ematic website does not mean Ematic endorses or accepts any responsibility for the content, or of any functionalities or services, of such website(s). Furthermore, Ematic makes no promise, representation or warranty that any non-Ematic website you navigate to will be free of viruses, worms, Trojan horses and other items of a destructive nature. The Ematic User Manual is for your exclusive benefit and you assume all risks, losses and/or damages of whatever nature that may result arising out of your use of the Ematic User Manual.

Limitation of Liability and Indemnity

To the maximum extent permitted by applicable law, Ematic shall not be liable for any damages suffered as a result of using, modifying, contributing, copying, distributing, or downloading the materials, use of the Ematic User Manual or use of any Ematic product and/or software. In no event shall Ematic be liable for any indirect, extraordinary, exemplary, punitive, special, incidental, or consequential damages (including, without limitation, loss of data, revenue, profits, use or other economic advantage) however arising, whether for breach of contract or in tort, even if Ematic has been previously advised of the possibility of such damage. You agree that you have sole responsibility for adequate protection and backup of data and/or equipment used in connection with the product and software and will not make a claim of any nature against Ematic for lost data, inaccurate output, work delays or lost profits resulting from the use of the materials. You agree to indemnify, hold harmless and defend Ematic, together with its affiliates, parent and subsidiary entities, successors, assigns, partners, managers, members, employees, officers, directors and shareholders, from and against any and all damages, liens, liabilities, losses, demands, actions, causes of action, claims, costs and expenses (including, without limitation, reasonable attorneys' fees, charges and disbursements, as well as the cost of in-house counsel and appeals) arising from or related to Ematic, the use of The Ematic User Manual or any Ematic product and/or software. Some jurisdictions do not allow the exclusion or limitation of incidental or consequential damages, so the above limitation or exclusion may not apply to you.

Windows™ is a registered trademark of Microsoft Corp. in the United States and other countries; Mac OS® is a registered trademark of Apple Inc.; Linux™ is a registered trademark of Linus Torvalds, Android, Google, Google Play, Google Now and other marks are trademarks of Google Inc. Ematic is not affiliated with Google Inc. Wi-Fi®, the Wi-Fi CERTIFIED logo, and the Wi-Fi logo are registered trademarks of the the Wi-Fi Alliance.

Ematic is not affiliated with Microsoft, Apple, Inc., Linux, or Google, Inc., (including Android).

This device complies with Part 15 of the FCC Rules. Operation is subject to the following two conditions: (1) this device may not cause harmful interference, and (2) this device must accept any interference received, including interference that may cause undesired operation.

The Ematic brand and products are owned by Shaghal, Ltd.

FCC Caution: Any changes or modifications not expressly approved by the party responsible for compliance could void the user's authority to operate this equipment.

NOTE: This equipment has been tested and found to comply with the limits for a Class B digital device, pursuant to Part 15 of the FCC Rules. These limits are designed to provide reasonable protection against harmful interference in a residential installation. This equipment generates, uses and can radiate radio frequency energy and, if not installed and used in accordance with the instructions, may cause harmful interference to radio communications.

However, there is no guarantee that interference will not occur in a particular installation.

If this equipment does cause harmful interference to radio or television reception, which can be determined by turning the equipment off and on, the user is encouraged to try to correct the interference by one or more of the following measures:

FCC RF Radiation Exposure Statement:

This equipment complies with FCC radiation exposure limits set forth for an uncontrolled environment. End users must follow the specific operating instructions for satisfying RF exposure compliance. This transmitter must not be collocated or operating in conjunction with any other antenna or transmitter. The device has been evaluated to meet general RF exposure requirement. The device can be used in portable exposure condition without restriction.