

Users Manual

Ematic 11.6" PC with Windows 10



EWT125

Important Notices:

- Since this laptop's software receives regular updates, this user manual may not cover all new features found on the laptop.
- Fully charge the battery before use. Allow the device to reach low battery before charging again for optimal battery use.
- While using earphones, if the volume is excessively high it may cause hearing damage. Please adjust the volume to a safe level.
- Do not disconnect the laptop from a computer suddenly when formatting, uploading, or downloading. This can cause damage to the hard drive.
- Do not dismantle the laptop or use alcohol, thinner or benzene to clean its surface.
- Do not use the laptop while driving or walking.
- The laptop is not moisture and water resistant. Please do not use it in any damp environment.
- Do not drop or hit the laptop against a hard surface or the screen could potentially be damaged/cracked.
- Do not upgrade the firmware by yourself. The laptop should be upgraded with the right firmware and right methods offered by us. If an upgrade is needed, please contact us at ematic.zendesk.com.

1. PC LAPTOP OVERVIEW

USB 2.0 Interface: You can directly insert USB flash drive, external hard drive, mouse, or keyboard.

Headphone jack: This socket can transmit the audio signal of PC to loudspeaker or headphones



Socket for DC power in: This socket can be used to charge the PC.

USB 3.0 Interface: You can directly insert USB flash drive, external hard drive, mouse, or keyboard



SD/TF card Interface
You can read the data through SD/TF card.

Mini HDMI Interface: High Definition Multimedia Interface.

Front CCD camera: take photos and record videos

Keyboard group: The keyboard group provides full size QWERTY key for best typing comfort.

Touch Tablet: Used to




Left Key

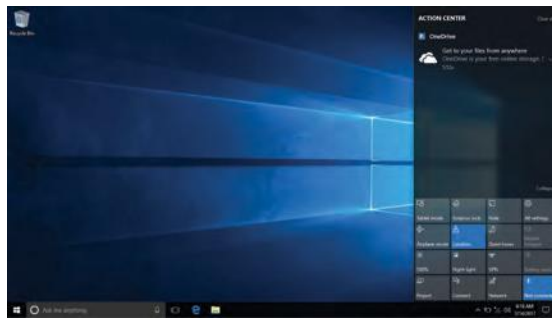
Right Key

Action Center

The action center allows you to view and manage the accumulated notifications and gives you quick access to commonly customized settings.

To open ACTION CENTER.

Keyboard: Windows key  +A



Lock the devices current orientation.



Switch from desktop to tablet mode.



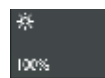
Turn Bluetooth® on or off.



Connect to WiFi network.



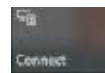
Enable or disable location settings.



Adjust the displays brightness.



Access all device settings.



Connect to wireless display or audio devices.



Activate to save battery.



Connect to a connection via VPN service.



Activate to disable notifications after certain hour.



Select to activate airplane mode.

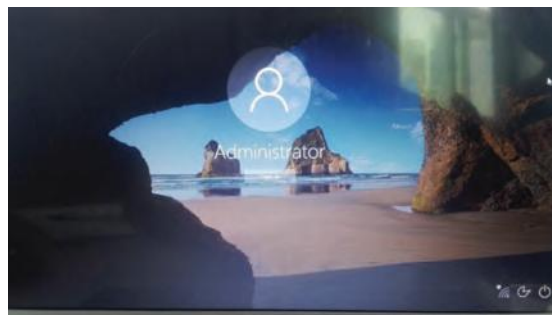
2. INITIAL SETUP

Turn on or Wake

To turn your PC laptop on, press and hold the power key for 2 seconds.

Once the screen loads, connect to your Wi-Fi network.

To wake, press the power button. The lock screen should appear. Press the up key and sign in if your PC laptop requires a password to log in.



Charging

Fully charge your PC laptop for 6 hours before the first use.



Use the included wall charger.

The battery indicator will show that your device is charging.

BATTERY STATUS

There are a few places you can check on your battery status:



The lower right corner of the lock screen

Battery Status

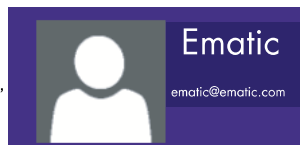


Battery Status

The lower right corner of the Desktop taskbar.

GETTING STARTED

Use your information to create a user account on this PC laptop. You can use this account to create, modify, or remove other accounts on this device.



3. PERSONALIZE YOUR TABLET

Personalize Your Start Screen



Create Tiles

Pin your favorite apps and websites to the Start Screen.

To pin an app:

1. Click and hold desired app, then select Pin to Taskbar.

To pin a website (Edge Browser Only):

1. Go to website using the Edge Browser installed on the device.
2. Click (...) on the right hand side.
3. Click Pin to Start.

Customize Your Tiles

Customize your start screen by changing around the tiles any way you like.



To move a tile: Click and drag to where you want it.



To resize a tile: Click and hold a tile. Select the **Resize(...)**. Choose the size you want.



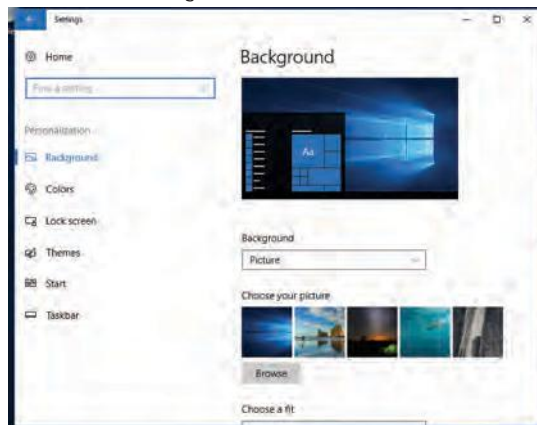
To turn off a live tile: Click and hold a tile. Choose more options icon (...). Select **Turn live tile off**.



To unpin tile from Start: Click and hold a tile. Select the **Unpin from start(...)**, then **Remove tile**.

Background & Color

You can also customize the Start screen colors and background. At the Start screen, open the Action Center and click **All Settings**. Select **Personalization**.



Personalize your Lock Screen

Open the Action Center, click All Settings. Click Personalization --> Lock screen --> Configure your options.



Personalize your Desktop

Customize your desktop how you want it.

Go to the desktop and open the Action Center. Click Personalization. Here is where you can change the theme, desktop background, colors, and sound.

Notifications & actions

Notifications should appear in the top right corner of the screen. To hide notifications, open the Action Center --> All Settings --> System --> Notifications & actions.

Lock Screen Notifications: To edit app notifications on the lock screen, open All Settings in the Action Center. Click Personalization, then Lock Screen.

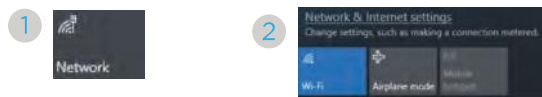
Choose apps to show quick status.



4. NETWORKING

Wi-Fi can only be used when the device connects to a Wi-Fi Access Point (AP) or a free unsecured Wi-Fi hotspot.

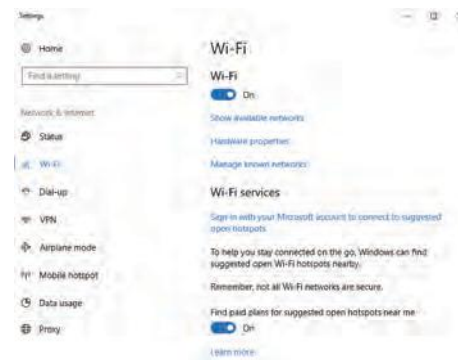
Turn on Wi-Fi



Within the Action Center menu, tap the wireless Network icon.

Under Networks, tap the Wi-Fi switch to turn it on and scan for networks.

Your PC laptop will list the networks it finds. Click a network to connect.



When connected, the wireless indicator appears in the status bar. The white lines indicate connection strength.

Turn Off Wi-Fi

Click the Wi-Fi OFF switch under Networks. Turn off Wi-Fi when you are not using it to extend the life of your battery between charges.

Forget a Wi-Fi Network

All Settings in the Action Center --> Network and Internet
--> Wi-Fi, click
Manage known networks, select the network you wish to delete and click "Forget".

Connect to a VPN

You can connect to a Virtual Private Network (VPN).

Note: This PC laptop has built-in support for VPN. You can also install third-party VPN software, if available in the Windows Store.

1. Open the Action Center and click VPN.
2. Click Add a VPN connection and enter VPN info to connect.

Disconnect from a VPN

Click the VPN OFF switch under the Action Center.
Turn off VPN when you're not using it to extend the life of your battery between charges.

5. CONNECT TO DEVICES

You can connect your PC laptop to different devices with a USB cable or wirelessly via Bluetooth/Wi-Fi.

Pair with a Bluetooth Device

1. Turn on your Bluetooth device to make it discoverable.
2. Open Action Center --> Click and hold Bluetooth --> Click Go To Settings.
3. Wait for your PC laptop to search for Bluetooth devices. When the Bluetooth device appears, follow the on-screen instructions to finish pairing

Setup a Printer or Scanner

Click All Settings in the Action Center -> Devices.

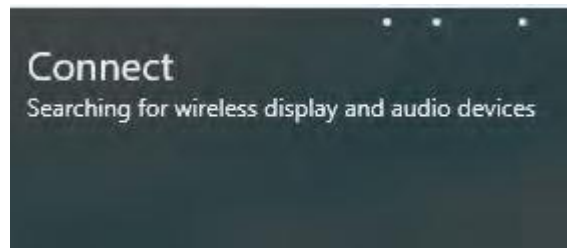
Available printers and scanners on your Wi-Fi network will be listed. If you do not see your printer, click "The printer that I want isn't listed" and follow the prompts.

Project to a Second Screen

Connect your PC laptop to a TV or monitor to watch movies, work with multiple apps, and share presentations.

To connect to a wireless display:

1. Open Action Center -> Click Connect
2. PC laptop will search for wireless Audio and Display devices.
3. Choose your wireless display and follow the on-screen instructions.



6. APPLICATIONS

Finding Apps

Click List Icon at the bottom left of the Start screen. An alphabetized list of your apps will appear. Scroll through the list or search to find an app.



Note: You can also use the FN key + Tilde Key (~) on a keyboard to open search.

Switch Between Open Apps

Press Alt + Tab on keyboard to switch between open apps and windows.

Close Apps

Press the X button to close out of apps.

Uninstall Apps

Click and hold an app until the app is highlighted, and Select Uninstall.



App Help & Settings

For App Help:

Open the App and find Help. If there is no help option available, check the developers website for information.

For App Settings:

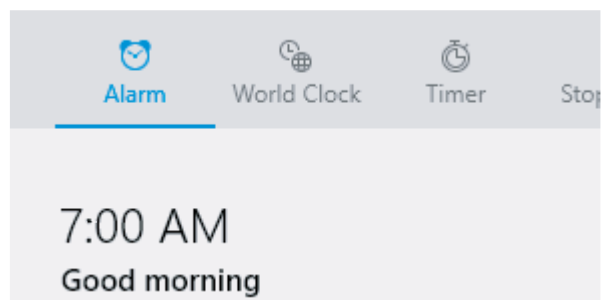
Open Action Center --> Select All Settings --> System --> select Apps

For Windows 10 Help:

Please visit windows.microsoft.com/windows10/support for more help.

Alarm & Clock

Click the Alarm & Clock app to access your alarm, timer, or stopwatch.



Camera



Click the camera app to take pictures and videos to share with your friends and family.

Taking Photos:

- Click the camera icon to take a photo
- Click the more options icon (...) to open Settings.

Recording Video:

- In the Camera App, click the video icon to switch to video recording
- Click the video icon again to start recording. Click to stop recording.
- Click the more options icon (...) to open Settings.

Included Apps



Alarm & Clock: Set Alarms, stopwatch, World Clock



Calculator: Basic calculator functions



Calendar: Keep track of your schedule and set reminders



Camera: Take photos and record videos



Excel Mobile: Light weight version optimized for your laptop



Get Office: Download a trial version of Microsoft office



Get Skype: Download Skype to chat with friends and family.



Groove Music: Stream and download new music



Word Mobile: Easily write documents in this word processing program.



Mail: Use the mail app to respond to messages from all your e-mail accounts.



Microsoft Edge: Surf the web at lightning speeds with this new internet browser.



Maps: Maps provides you with directions and traffic conditions to help you get where you need to go.



Microsoft Solitaire Collection: Pass the time playing this classic card game with a whole new look.



Movies & TV: Keep yourself entertained by watching and streaming movies and television.



OneDrive: Easily share files securely with friends. Cloud storage makes your files accessible from any of your devices.



OneNote: A digital notebook where all your notes, to-do lists, and pictures are saved in the cloud for easy access.



People: An address book and a social media app in one. Here you get all the latest updates from your friends on Facebook, Twitter, Google, etc.



Photos: View, edit, and import photos on your tablet and OneDrive.



XBOX: The Xbox app is the place to play games, meet up with friends, make new ones, and rack up achievements.



PowerPoint Mobile: Create presentations with ease on your device.



Settings: Access settings for your device ranging from personalization to networks.



Voice Recorder: Record audio using the built-in microphone.



Weather: This app shows you hourly, daily, and 10-day forecasts.



Store: Get the latest apps from the Windows Store.



Windows Feedback: Provide your feedback to help improve future versions of Windows.



Windows Media Player: Play all your local music and video files.



Windows Feedback: Provide your feedback to help improve future versions of Windows.



Windows Media Player: Play all your local music and video files.



Windows PowerShell: A task automation and configuration management framework from Microsoft



Windows System: Access the Control Panel, Task Manager and other system settings from this panel.



Windows Accessories: Your favorite classic programs such as NotePad and Paint.



Windows Administrative Settings: Change your system wide settings.



Windows Ease of Access: Change settings to improve your user experience.

Download and explore more Apps from the Windows Store.

7. USER ACCOUNTS

Your user account controls how you use your PC laptop. When you want to use your laptop, sign in with your user account.

Microsoft Account or Local Account

Choose whether you want to use a Microsoft account or a local account.

Microsoft Account

You use this account to sign into Windows, and shop for apps in the Windows Store. All your files are also saved to OneDrive by default so that you can access them from any PC.

Local Account

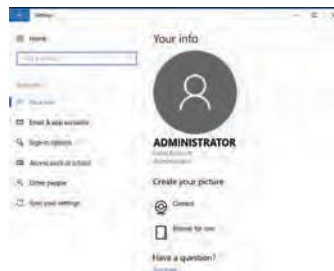
You can only use a local account on your laptop and cannot connect to the cloud.

Manage Your Accounts

There are two ways you can manage your accounts

Action Center

1. Open the Action Center and click All Settings.
2. Click Accounts --> Set access for other accounts.



Control Panel

1. In Desktop Mode open the search menu.
2. Type “user accounts” into the search bar.
3. Choose accounts from search results.

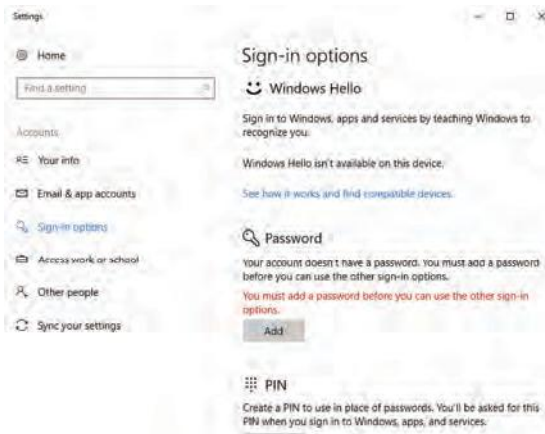
Unlock & Sign-in

1. Press and release power button. The lock screen should appear.
2. Press up to dismiss lock screen (or press “Sign In”) and type in your password (if required),

Sign-in Options

You can also create a pin password to sign in to your laptop.

To access other sign in options, go to All Settings in the Action Center. Click Accounts, then click Sign-in options and follow the on-screen instructions.



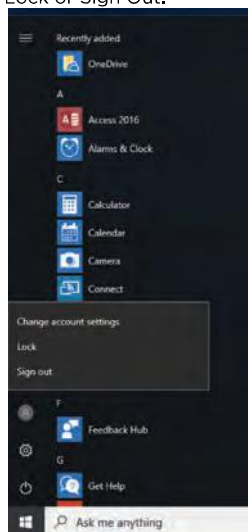
Change Your Password

1. Open the Action Center. Tap All Settings.
2. Click Accounts -> Sign-in options.
3. Choose user accounts from search results.
3. Under password, click Change and follow the onscreen instructions.

Lock or Sign Out

Your PC laptop will be automatically locked when you don't use it for a while.

You can manually lock or sign out from the Start screen by clicking the top left more options icon. Then click the picture in the top left corner of the screen. Choose Lock or Sign Out.



8. EASE OF ACCESS

The Ease of Access settings allows you to change your laptop the way you want, making your PC easier to use.

To go to Ease of Access Settings:

1. Open Action Center. Click All Settings.
2. Click Ease of Access.
3. Configure your settings.

9. PC SETTINGS

Activate Windows: Install the latest version of Windows on your PC laptop with your product key.

Devices: Manage your laptop settings such as display, typing, power, and sleep. Manage Bluetooth devices and other devices. Get PC info.

Accounts: Manage and create different user accounts.

Privacy: Change your privacy settings, location settings, webcam settings, microphone settings, and other devices.

Network: Manage your network connections.

Time and language: Set date and time. Set region and language.

Ease of Access: Control accessibility settings. Narrator, magnifier, high contrast, and keyboard options can be adjusted to your needs.

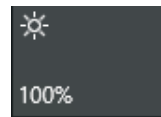
Update and Security: Update Windows, save copies of your settings and recover or reinstall your PC laptop. Change your security.

10. TIPS & TRICKS

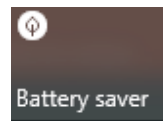
Extending Battery Life

Reducing the Brightness of your screen can help extend your battery life

1. In the Action Center, click the sun icon with 100%. Clicking this tile reduces the display brightness in increments of 25%.



2. In the Action Center, click the battery saver tile. This will change automatically configure settings to extend your battery life



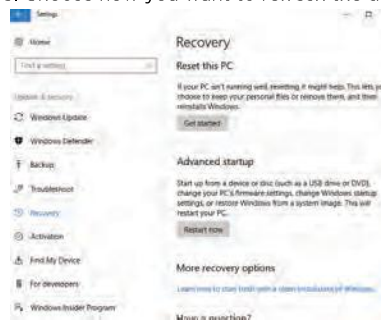
3. Switch off Wi-Fi if you're not close to a strong signal to help conserve your battery even farther



11. REFRESH/RESET

Refresh Device

1. In the Action Center, click on All Settings.
2. Click on Update and Security. Click Recovery.
3. Choose how you want to refresh the device.



Restart Device

1. In the Action Center, click on All Settings.
2. Click on Update and Security. Click Recovery
2. Choose "Restart Now"



Warning: Reset deletes all your personal and settings. The PC restores to its factory settings.

12. TROUBLESHOOTING

Cannot turn on the PC laptop

Check the PC laptop's power level. Please charge it before starting it. If your PC laptop still cannot be turned on, you may reset it before you turn it on.

No sound from earphones.

Check if volume is set to '0'. Or earphone may be broken, please try another one.

Loud static noise.

Check if there is dust in the earphone or speaker. Check if the file is broken.

Frozen to any operation.

Reset the device by pressing the reset button with a small object such as a paperclip.

Application is not working.

Possible reasons may be that this App. is not compatible with your OS or the downloaded .apk file is broken. You may need to download a full version.

How do I delete a Microsoft account?

If an account is added, the account is shown in Other accounts, where you may also add another account. To delete an undesired account, click the account, then click Remove. Tap Delete account and data.

Technical Specifications.

- Windows 10
- iNet T311 CherryTrail-T3 Z8350
- 11.6" 1366 X 768 Display
- 2G DDR3L Memory
- 32GB Flash Memory
- 8000mAh 3.7V Battery
- Dual Speakers
- 4x1.5 -46DB Mic.
- Micro SD Port (1)
- DC 3.5*1.35*1 Charger port
- USB 3.0 (1)/USB 2.0 (1)
- 3,5mm Headphone jack
- Mini HDMI port (1)
- Dual Speakers
- Front USB 0,3MP Camera
- 802.11 b/g/n (module) , a/b/g/n, optional Wi-Fi
- Bluetooth 4,0

Customer Support.

Visit ematic.zendesk.com for customer support regarding your device.

To submit a request, fill out the required information online. You will be provided a ticket number regarding your issue which you can refer to when contacting us further.

Limitations of Liability Statement

The Ematic User Manual may contain or reference links to third-party sites, however, please be aware that Ematic is not responsible for and cannot control these other sites. Ematic makes no representations or warranties whatsoever about any other website which you may access as a result of reading this user manual, or otherwise. When you access a website that is not owned or operated by Ematic (a "non-Ematic website"), even one that may contain an Ematic logo, please understand that it is independent from Ematic, and that Ematic has no direct control over the content on such website(s). In addition, a link to any such non-Ematic website does not mean Ematic endorses or accepts any responsibility for the content, or of any functionalities or services, of such website(s). Furthermore, Ematic makes no promise, representation or warranty that any non-Ematic website you navigate to will be free of viruses, worms, Trojan horses and other items of a destructive nature. The Ematic User Manual is for your exclusive and you assume all risks, losses and/or damages of whatever nature that may result arising out of your use of the Ematic User Manual.

Limitation of Liability and Indemnity

To the maximum extent permitted by applicable law, Ematic shall not be liable for any damages suffered as a result of using, modifying, contributing, copying, distributing, or downloading the materials, use of the Ematic User Manual or use of any Ematic product and/or software. In no event shall Ematic be liable for any indirect, extraordinary, exemplary, punitive, special, incidental, or consequential damages (including, without limitation, loss of data, revenue, profits, use or other economic advantage) however arising, whether for breach of contract or in tort, even if Ematic has been previously advised of the possibility of such damage. You agree that you have sole responsibility for adequate protection and backup of data and/or equipment used in connection with the product and software and will not make a claim of any nature against Ematic for lost data, inaccurate output, work delays or lost profits resulting from the use of the materials. You agree to indemnify, hold harmless and defend Ematic, together with its affiliates, parent and subsidiary entities, successors, assigns, partners, managers, members, employees, officers, directors and shareholders, from and against any and all damages, liens, liabilities, losses, demands, actions, causes of action, claims, costs and expenses (including, without limitation, reasonable attorneys' fees, charges and disbursements, as well as the cost of in-house counsel and appeals) arising from or related to Ematic, the use of The Ematic User Manual or any Ematic product and/or software. Some jurisdictions do not allow the exclusion or limitation of incidental or consequential damages, so the above limitation or exclusion may not apply to you.

Windows™ is a registered trademark of Microsoft Corp. in the United States and other countries; Mac OS® is a registered trademark of Apple Inc. Ematic is not affiliated with the Wi-Fi CERTIFIED logo, and the Wi-Fi logo are registered trademarks of the Wi-Fi Alliance. ©2010 Bluetooth SIG, Inc. All rights reserved.

Ematic is not affiliated with Microsoft or Apple, Inc.

This device complies with Part 15 of the FCC Rules. Operation is subject to the following two conditions: (1) this device may not cause harmful interference, and (2) this device must accept any interference received, including interference that may cause undesired operation.

The Ematic brand and products are owned by Shaghal, Ltd.z

FCC Caution:

This device complies with part 15 of the FCC Rules. Operation is subject to the following two conditions: (1) This device may not cause harmful interference, and (2) this device must accept any interference received, including interference that may cause undesired operation.

Any Changes or modifications not expressly approved by the party responsible for compliance could void the user's authority to operate the equipment.

Note: This equipment has been tested and found to comply with the limits for a Class B digital device, pursuant to part 15 of the FCC Rules. These limits are designed to provide reasonable protection against harmful interference in a residential installation. This equipment generates uses and can radiate radio frequency energy and, if not installed and used in accordance with the instructions, may cause harmful interference to radio communications. However, there is no guarantee that interference will not occur in a particular installation. If this equipment does cause harmful interference to radio or television reception, which can be determined by turning the equipment off and on, the user is encouraged to try to correct the interference by one or more of the following measures:

- Reorient or relocate the receiving antenna.
- Increase the separation between the equipment and receiver.
- Connect the equipment into an outlet on a circuit different from that to which the receiver is connected.
- Consult the dealer or an experienced radio/TV technician for help.

The device has been evaluated to meet general RF exposure requirement. The device can be used in portable exposure condition without restriction.

