

Excalibur Wireless Tickers

User Guide

For Models 5398, 5493, and 5551



©2010 EB Excalibur, Inc.

QUICK START INSTRUCTIONS

TICKERS (Step 1)

Insert a set of fresh alkaline batteries into the Ticker making sure the minus end of the battery is touching the spring.

If “WAITING TO RECEIVE DATA FROM TRANSMITTER” is not scrolling across the screen, or the text on the scrolling message is unreadable, use a thin object to press the RESET button. The RESET button is on the back of the unit at the top left side.

DEMO MODE

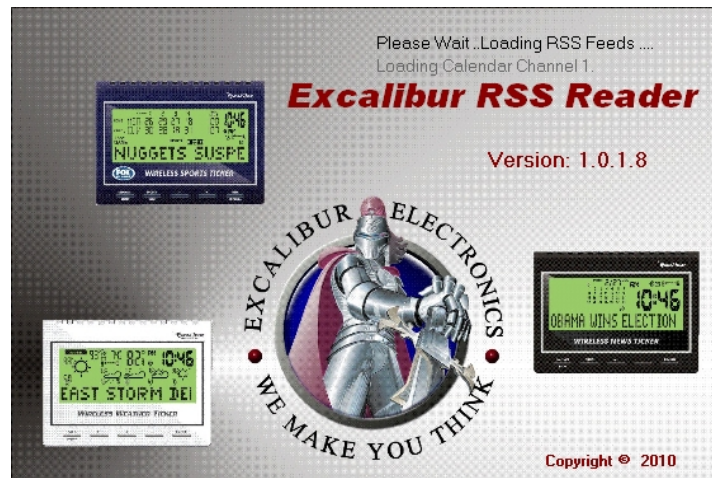
Each Ticker has a built in demo mode that will load all its new channels with four headlines and detail. To enter the DEMO MODE after a RESET, press the DETAIL (-) button to view the software version and copyright screen. Now press the UPDATE button on back of the unit.

USB DONGLE (Step 2)

Insert the USB Dongle transmitter into an open USB port on your computer. If it displays a “Found New Hardware” message in the lower right of your screen, wait until it says your new hardware is ready to use. Only one Dongle is used for all Tickers, do not insert more than one Dongle.

Note: The LED on the Dongle only lights while data is being transmitted to the Tickers. See section on News and Data Updates for more information on transmission frequency.

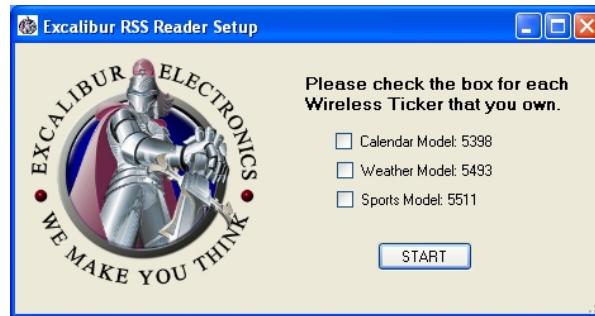
INSTALL RSS READER PC SOFTWARE (Step 3)



To send news information to the Tickers, you must first install the Software, please follow the instructions below to get started:

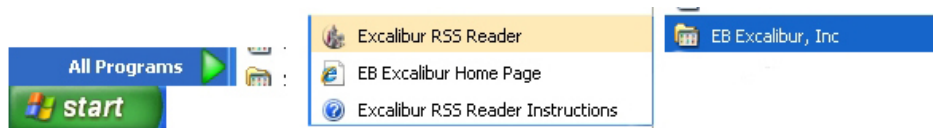
Go to www.ebexcaliburcreative.com/ticker and click on the link to download the Excalibur RSS Reader software. You will be asked permission to run the Setup program and then the Install program, please give permission to do so.

The next screen that should appear is the Tickers you own selection screen. Place a check mark next to the Ticker(s) that you have and click Start.



If you have a Firewall program that requires you to give a newly installed program permission to access the internet, a new screen will appear asking your permission. Give permission for the Excalibur RSS Reader program to access the internet. You may need to restart the Excalibur RSS Reader program after giving permission.

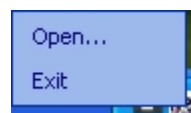
To restart the Excalibur RSS Reader program or to read the full Ticker Instruction Manual, use the Windows: Start → All Programs → EB Excalibur Inc. menu to select Excalibur RSS Reader or Excalibur RSS Reader Instructions.



While the Excalibur RSS Reader software is running, an Excalibur Icon will appear in the lower right tray where your clock time is displayed.



Right clicking on that Icon will show a menu with EXIT and OPEN.



If you want to stop the Excalibur RSS Reader program, select the EXIT item from the menu. You will need to use the START menu to find the Excalibur RSS Reader program to start it again. Use the OPEN item on the menu to open the RSS Reader for viewing and making changes to its settings. You may also double click on this Icon to open the RSS Reader.

TICKER INSTRUCTIONS

Insert a set of fresh alkaline batteries into the Ticker making sure the minus end of the battery is touching the spring.

If “WAITING TO RECEIVE DATA FROM TRANSMITTER” is not scrolling across the screen, or the text on the scrolling message is unreadable, use a thin object to press the RESET button. The RESET button is on the back of the unit at the top left side.

The Ticker displays current setting and changes current setting using the following methodology. Press a button once to see a setting. After a period of time, the screen will return to scrolling the news. If you press a button once, and then quickly press it again you will advance to the next setting or item. So one press of a button will review a setting, and repeated presses of that button will change a setting.

Key Legend Calendar News Ticker:

SPEED	MONTH			NEWS CHANNEL	CONTRAST
		DETAIL	HEADLINE		

Key Legend Sports News Ticker:

VIEW	TEAM			NEWS CHANNEL	CONTRAST SPEED
		DETAIL	HEADLINE		

Key Legend Weather News Ticker:

CITY	FORECAST			NEWS CHANNEL	CONTRAST SPEED
		DETAIL	HEADLINE		

COMMON BUTTON FUNCTIONS

NEWS CHANNEL

Press this button once to see which News Channel has the current headline that is scrolling across the screen. Repeatedly press this button to change to another News Channel.

HEADLINE (+)

Press this button once to view the start of current headline scrolling across the screen. Repeatedly press this button to advance to the next headline for the current News Channel. When the last headline for the current News Channel is reached, a tone will be sounded and it will wrap around to the first headline.

This button is also used to advance other settings such as CONTRAST and SPEED.

DETAIL (-)

Press the button once to view more detail about the headline that is scrolling across the screen. Some headlines may not have any detail and in that case a buzz sound will be sounded. Pressing this button while a headlines detail is scrolling across the screen will return to displaying the headline.

If you have set a Keyword(s) search on the Excalibur RSS Reader, a tone alert will be sounded every time a headline contains that keyword. Viewing the detail, by pressing this button, will turn off the tone alert for that headline.

This button is also used to reduce other settings such as CONTRAST and SPEED.

TICKER SPECIFIC BUTTON FUNCTIONS

Calendar News Ticker

CONTRAST

Press this button once to view the current contrast setting. Repeatedly press this button to change the contrast setting.

Note: Version 06 also permits the shown contrast setting to be changed with the (-) and (+) buttons.

SPEED

Press this button once to view the current scroll (ticker) speed setting. Repeatedly press this button to change the scroll (ticker) speed setting.

Note: Version 06 also permits the shown scroll (ticker) speed setting to be changed with the (-) and (+) buttons.

MONTH

Press this button to enter the Perpetual Calendar mode. The current year will be displayed on the clock digits, and the current month will flash. You may now press the (-) button once or repeatedly to go back to the previous month or months, to view the calendar for that month. You may press the (+) button once or repeatedly to advance to the next month or months, to view the calendar for that month.

Press the Month button a second time will cancel the Perpetual Calendar mode and restore the current time display.

Sports News Ticker

CONTRAST SPEED

Press this button once to view the current LCD screen contrast setting. While the current contrast setting is being displayed, use the (-) and (+) buttons to change the contrast setting.

If this button is pressed again while the current LCD screen contrast setting is shown, the "USE + OR - KEYS TO ADJUST TICKER SPEED" message will scroll across the screen. If the (+) or (-) button is not pressed, the scrolling screen will return to the current news headline.

VIEW

Press this button to change the view to the next view. There are three sports data views, which are Next Game, Last Game, and Standings.

The Next Game view shows the date and time for when your selected favorite team is going to play. It also shows how many days, hours, and minutes until game time.

Example: dA 01 15:20 means 1 day 15 hours and 20 minutes. When the game actually starts, the word Next will disappear and just Game will be displayed along with the current live game score.

The Last Game view shows the results of the last game played by your favorite team.

The Standings view shows the standings for your favorite team.

TEAM

Press this button once to view which of your favorite teams data is being displayed. Repeatedly pressing this button will change to the next one of your three favorite teams.

Weather News Ticker

CONTRAST SPEED

Press this button once to view the current LCD screen contrast setting is shown. While the current contrast setting is being displayed, use the (-) and (+) buttons to change the contrast setting.

If this button is pressed again while the current LCD screen contrast setting, the “USE + OR – KEYS TO ADJUST TICKER SPEED “message will scroll across the screen. If the (+) or (-) button is not pressed, the scrolling screen will return to the current news headline.

CITY

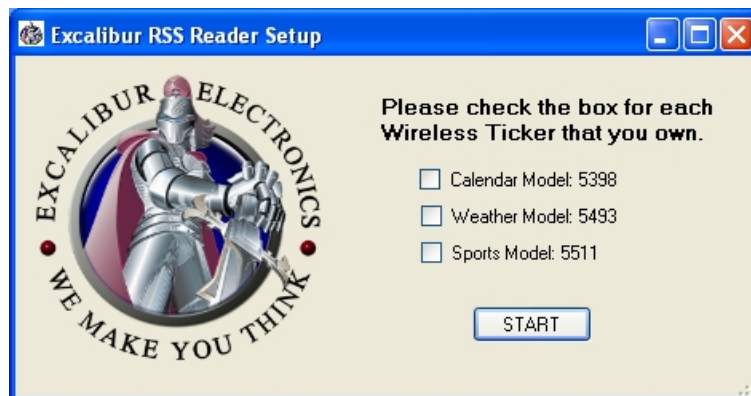
Press this button once to view the name of the city whose weather temperature and forecast is being displayed. Repeatedly press this button to change to another city.

FORECAST

Press this button once to view a text description of the current day’s weather forecast symbol. Repeatedly press this button to advance to the next days forecast to view a text description of that days forecast symbol.

EXCALIBUR RSS READER INSTRUCTIONS

The first time the Excalibur RSS Reader is installed, or if you restart the Excalibur RSS Reader program from the Start menu, the following selection screen will be shown.



Click the box next to each Ticker that you own.

While the Excalibur RSS Reader software is running, an Excalibur Icon will appear in the lower right tray where your clock time is displayed.



Right clicking on that Icon will show a menu with EXIT and OPEN.



If you want to stop the Excalibur RSS Reader program, select the EXIT item from the menu. You will need to use the START menu to find the Excalibur RSS Reader program to start it again. Use the OPEN item on the menu to open the RSS Reader for viewing and making changes to its settings. You may also double click on this Icon to open the RSS Reader.

Note: For proper operation of the Sports Ticker data display, your computer must be set to your correct time zone. To check that it is set correctly, double click on your clock display near the Excalibur Icon. If it was not correct and you corrected it, you must exit the RSS Reader program and restart it again so that it can read the correct time zone setting.

NEWS AND DATA UPDATES

All news feeds are updated every 15 minutes. The Calendar Ticker is updated starting on the hour, the Sports Ticker is updated starting 5 minutes after the hour, and the Weather Ticker is updated starting 10 minutes after the hour.

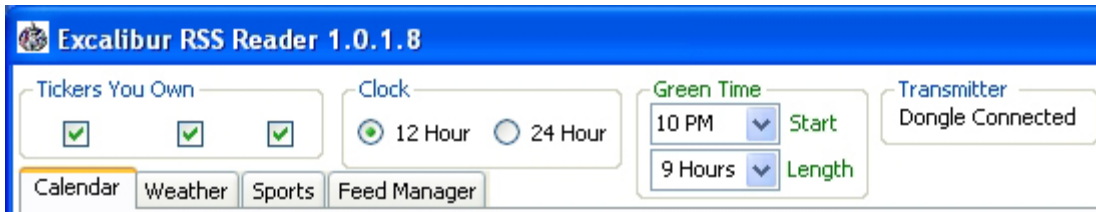
Sports data is updated every 15 minutes, but during live games it is updated every 5 minutes.

Weather data (temperatures, forecasts...) is updated once per hour.

An Envelope Icon is displayed when the ticker receives the update. If it does not receive the update, it turns the Envelope Icon off.

During Green Times, the Envelope Icon will flash showing it is in its most Green power saving state.

If the Envelope Icon is not on, but it is in wireless communication range, pressing the UPDATE button on the back of the Ticker will cause the Ticker to turn on its receiver for four minutes while it waits to receive data from the RSS Reader. It should then synchronize with the PC Dongle Transmitter.



COMMON RSS READER SETTINGS

CLOCK

You may choose either a 12 hour clock display with AM and PM or a 24 hour clock display on your Ticker unit, by clicking the appropriate option.

GREEN TIME

To maximize the battery life of the Ticker, you may select a period of time during which the Ticker will not turn on its radio receiver. This period is defined by a Start green time and a Length of green time. If the Length of green time is set to zero, the Ticker will always turn on its radio receiver at the scheduled times.

TICKERS YOU OWN

Each of the three Tickers has its own Tab and a check mark above its Tab for the Tickers you own. You may check or uncheck the Owned Tickers boxes at any time. However, if you do not have a check mark by the Ticker(s) you own, they will not be sent any new updated information.

TABS: CALENDAR, WEATHER, SPORTS, FEED MANAGER

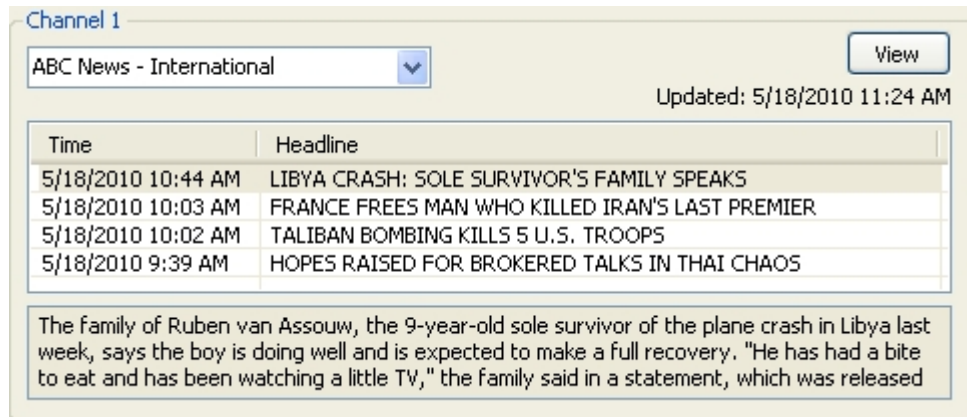
You may change which Ticker RSS Reader information screen to view by clicking on its Tab.

COMMON TICKER TAB SETTINGS

Keyword(s) Alert

KEYWORD(S) ALERT

If you would like to have your Ticker alert you with a sound whenever a news headline has a particular word or phrase, enter it into the Keyword(s) box. The next time any news headline is received with those keyword(s) the RSS Reader will send it to the Ticker as an alert headline. If you wish you may follow the above UPDATE procedure to force the Ticker to synchronize with the RSS Reader and the new keyword(s) you have added.



CHANNEL

Click on the Channel box arrow to view a list of available RSS Feeds. Select the RSS Feed that you would like to monitor from that list.

HEADLINE

RSS Feeds supply headlines and generally detail about those headlines. There are four lines of headlines for each channel. The area below the headlines is the detail area. If there is detail for the highlighted headline, it will be shown in that area. Clicking on a headline will highlight it and display any detail information if there is some available.

VIEW

RSS Feeds also supply a link to the web site page that has supplied the information. To read the full story for a highlighted headline, click on the VIEW button. You may also double click on one of the four headlines to quickly view the full story from the source's web site page.

WEATHER TICKER TAB SETTINGS

Excalibur RSS Reader 1.0.1.8

Tickers You Own: Clock: 12 Hour 24 Hour Green Time: 10 PM Start 9 Hours Length Transmitter: Dongle Connected

Calendar Weather Sports Feed Manager

Wireless News Tickers

Channel 1: CNN - Weather Updated: 8/10/2010 4:19 PM

Time	Headline
8/10/2010 7:47 PM	Offshore drilling ban unlikely to be extended, official says
8/10/2010 1:56 PM	HIGH TEMPERATURES FORECAST TO CONTINUE TO THE WEEKEND
8/8/2010 9:33 PM	COLIN DISSIPATES NEAR BERMUDA
8/7/2010 9:38 AM	TROPICAL STORMS FORM IN THE PACIFIC, ATLANTIC

The man who has taken over the government agency that regulates offshore drilling said Tuesday he can't see the Obama administration's ban on the practice "lasting longer than November 30."

Channel 2: Yahoo - Weather Updated: 8/10/2010 4:19 PM

Time	Headline
8/10/2010 4:15 PM	US swelters as heat wave lengthens (AFP)
8/10/2010 4:10 PM	CHINA LANDSLIDE TOLL RISES TO 700; PAKISTANIS FLEE (AP)
8/10/2010 3:56 PM	US AID WINNING FRIENDS IN FLOOD-RAVAGED PAKISTAN (AP)
8/10/2010 3:53 PM	HISTORIC HEAT TO DENT RUSSIAN GROWTH, FIRES RAGE (R...

AFP - More than 15 US states sweltered under weather alerts and warnings Tuesday amid a heat wave that flared in July and shows no sign of abating, particularly in the eastern United States, weather services said.

Channel 3: SPC Tornado/Severe Thunderstorm W Updated: 8/10/2010 4:26 PM

Time	Headline
8/10/2010 6:50 PM	SPC Tornado Watch 598
8/10/2010 6:50 PM	SPC TORNADO WATCH 598

WW 598 TORNADO IA MN 101850Z - 110100Z URGENT - IMMEDIATE BROADCAST REQUESTED TORNADO WATCH NUMBER 598 NWS STORM PREDICTION CENTER NORMAN OK 150 PM CDT TUE AUG 10 2010 THE NWS STORM PREDICTION CENTER HAS ISSUED A

Channel 4: Weather Home Forecast Updated: 8/10/2010 4:19 PM

Time	Headline
8/10/2010 2:38 PM	FORECAST FOR NOW THROUGH 06:00 PM EDT AUGUST 10, 2010
8/10/2010 2:38 PM	FORECAST FOR REST OF THIS AFTERNOON AND EVENING
8/10/2010 2:38 PM	FORECAST FOR TONIGHT
8/10/2010 2:38 PM	FORECAST FOR WEDNESDAY

Several bands of moderate to heavy showers and a few embedded thunderstorms will affect virtually all of mainland south Florida through 6 PM edt. This activity is rotating northward around an area of low pressure over the southeastern Gulf of Mexico. Although the heaviest

Keyword(s) Alert:

Temperature Scale: Fahrenheit Celsius

Home City Zip Code: 33156 Miami, FL 79° Cloudy

City 2 Zip Code: 10010 New York, NY 91° Mostly Sunny

City 3 Zip Code: 60660 Chicago, IL 84° Mostly Cloudy

[Click to Find City Postal Zip Code](#)

ZIP CODE

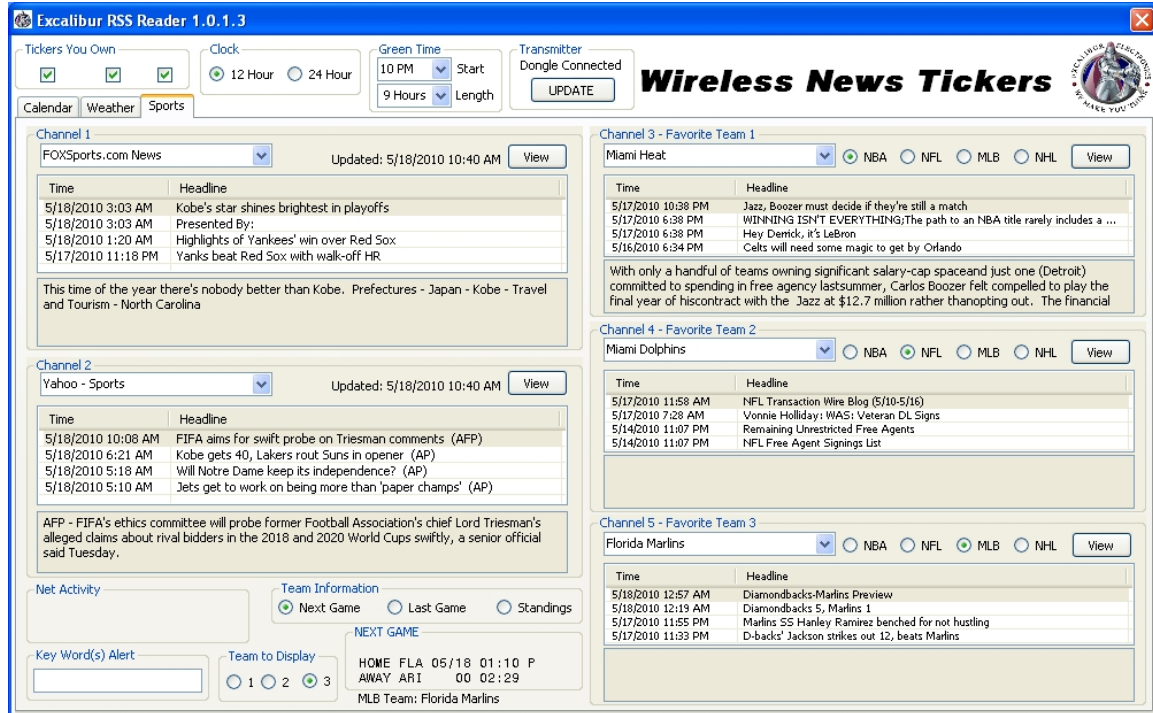
You may change the city for which weather data is displayed by changing the zip code in the boxes on the bottom of the Weather information screen. The first zip code box is for the city where you live, the other two zip code boxes are for two additional cities you can monitor with the Weather Ticker.

If you do not know the Zip Code for the city you want to monitor, click on the link near the Keyword box. Find your city of interest's zip code and enter it into the appropriate zip code box.

TEMPERATURE SCALE

You may choose to display the weather temperature in Fahrenheit or Celsius, by clicking on the appropriate option circle.

SPORTS TICKER TAB SETTINGS



CHANNEL - FAVORITE TEAM

You may change any of the Favorite Team Channels by clicking on the arrow at the right of a Channel – Favorite Team box. Select the team you wish to monitor from the list of teams shown. If the team you would like to find is in a different sport, check the appropriate sports checkbox and then view the Channel – Favorite Team list.

SPORT CHECKBOXES

You may select from one of four sports per Favorite Team Channel, by checking NBA (basketball), NFL (football), MLB (baseball) or NHL (hockey).

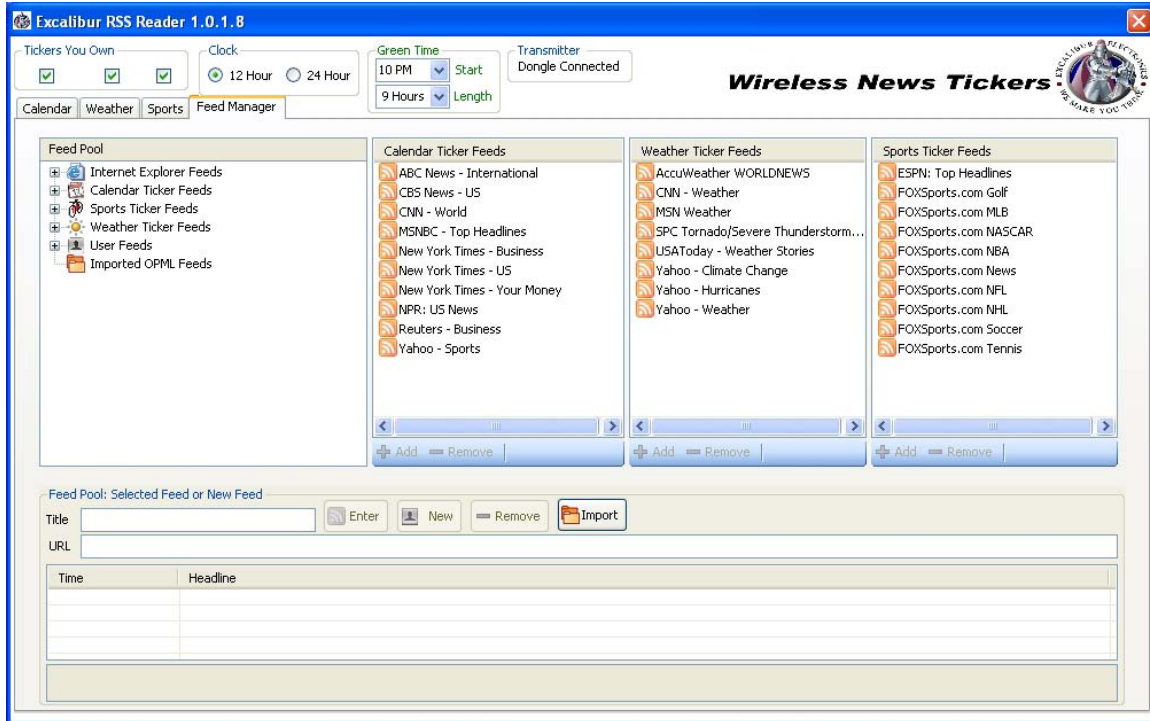
NET ACTIVITY

Each day, the schedule for each of your favorite teams is downloaded from FoxSports.com. This schedule is also loaded when you change sports or team. This may take a significant amount of time to download, so an activity bar will be shown.

SPORTS DATA SCREEN

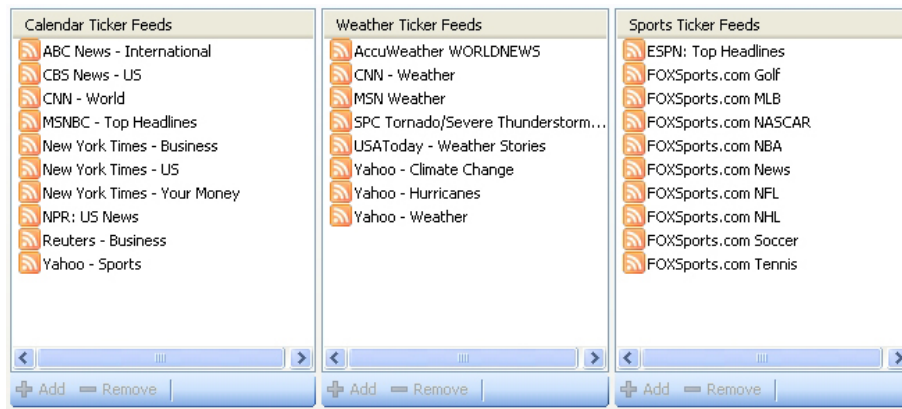
The same sports data information that is shown on your Sports Ticker screen is also available on the RSS Reader Sports Ticker TAB at the lower left, near the Keyword box. You may change the Team Information View by clicking the circle for Next Game, Last Game or Standings. You may change which Team to view by the appropriate Team to Display circle.

FEED MANAGER TAB



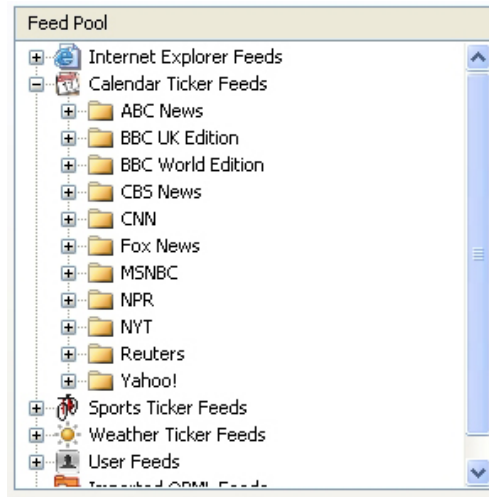
Customize a Tickers Channel Selector







The Feed Manager allows you to customize which feeds are shown on the Channel selector displayed on the particular Ticker Tab. On the image below note the **+** Add and **-** Remove buttons for each of the Tickers.




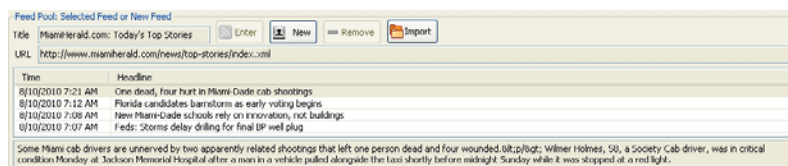
The **+** Add and **-** Remove buttons are dimmed to show they are not active. To remove a feed from the Ticker you own, click on it. The **-** Remove button will now light and may be pressed. If the feed being removed is one which is actively being sent to the Ticker, you will be asked to confirm before the feed is removed. You can always add it back or add other feeds by using the Feed Pool.



The Feed Pool



The Feed Pool reads the RSS Feeds that have been subscribed to in  Internet Explorer and displays them for selection to add to your Ticker. In addition the default feeds as well as other feeds are available for the ,  Sports and  Weather Tickers so you may add or remove these feeds to your Ticker. You may also enter in your own  User Feed by typing in its Title and URL address. Lastly you may import feeds from an OPML file type. Some RSS Readers, like Google Reader can export their feeds to an OPML file which you can import into the Feed Pool by clicking on the  Import button.

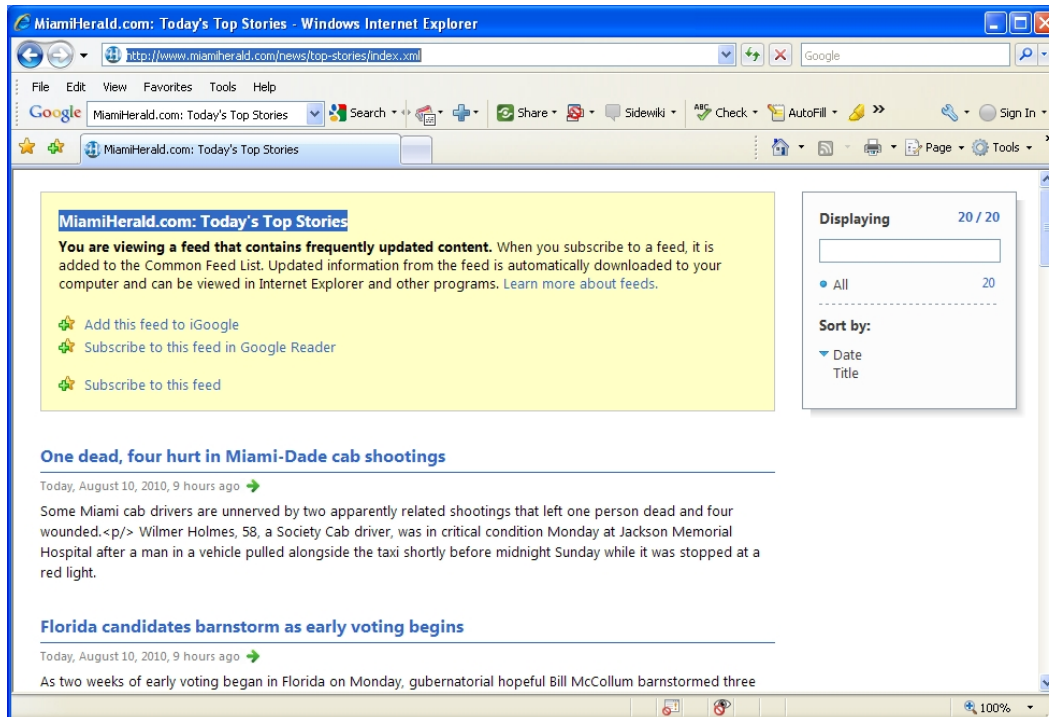
The Feed Pool is organized and selected like the Folder view in Windows Explorer. Clicking on the + node will expand the node to show more folders or feeds. Clicking on the – node will collapse the node. Once a  RSS feed is displayed, it may be clicked on to select it. If it is a valid feed the RSS Reader can read, its Headlines and Detail will be shown in the Feed Pool: Select Feed or New Feed area shown below.




At this time the  Add buttons will light in the Ticker Channel Selection area described earlier. Clicking on the  Add button for the Ticker you own will add it to the list of feeds available to select for your Ticker on its Tab.

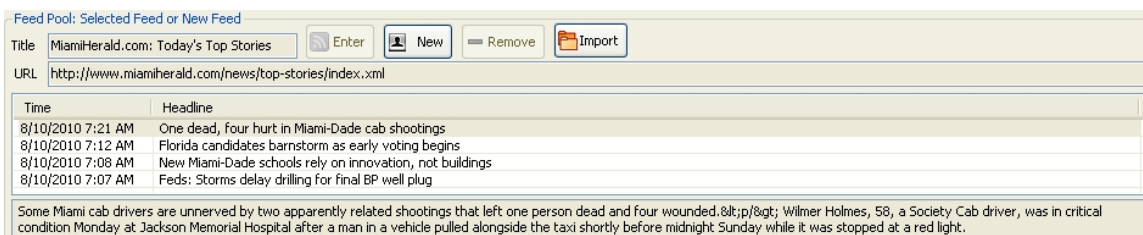
Entering a User Feed

As an example of how one can add their own feed, let's add a feed to the Feed Pool for the Miami Herald. After Googling "Miami Herald RSS Feed" and clicking on the first result we are taken to the below shown web page.

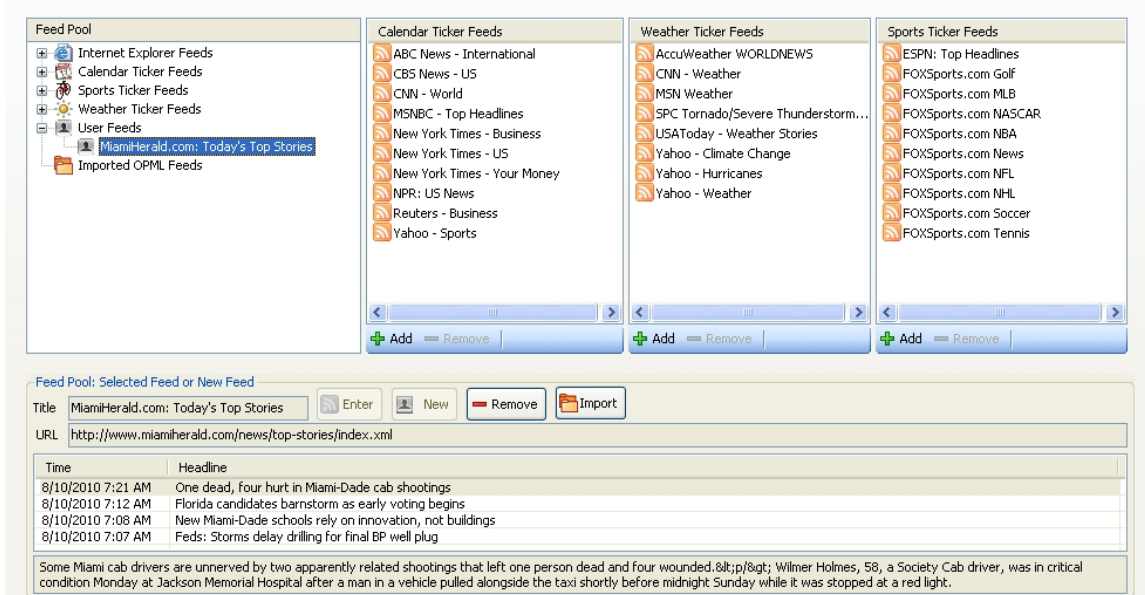


Generally this is the type of page one sees for a site's RSS Feed subscription. If you click on "Subscribe to this feed" in the yellow area, the feed will be added to the Internet Explorer Feed List. If that happens, the next time the Excalibur RSS Reader is started, the new feed will appear in the Feed Pool under Internet Explorer Feeds. But for this example we will manually enter the feed into the User Feeds.

I have highlighted the name of the site "MiamiHerald.com Today's Top Stories" and copied it to the clipboard. I then clicked on the "Title" area in the Feed Pool: Select Feed or New Feed area and pasted it there. Next I went back to the web page and copied the URL address that is at the top of the Internet Explorer window to the clipboard. Next I pasted it into the "URL" area in the Feed Pool: Select Feed or New Feed area. Finally I clicked on the  Enter button. The image below shows the result.



The news Headlines and Description appeared showing the RSS Reader could read the feed and this feed now appeared under the User Feeds in the Feed Pool and the **+** Add buttons lighted so I could now add it to my Tickers Feed list. See below.



Notice on the above image that the **-** Remove button has now lit in the Feed Pool: Selected Feed New Feed area. It can be used to remove a User Feed that is no longer wanted in the Feed Pool.

Care and maintenance

Avoid rough handling such as bumping or dropping.

Avoid moisture and extreme temperatures.

For best results, use between the temperatures of 39°F and 100°F (4°C and 38°C).

Clean using only a slightly damp cloth. Do not use cleaners with chemical agents.

Do not submerge this unit in water or other liquids.

Battery Information

Your Wireless Ticker uses 4-AA batteries.

Computers can sometimes “lock up” due to static discharge or other electrical disturbances. If this should happen, use a slim, pointed object to press the button marked “RESET.”



CAUTION – Battery Safety Information

Non-rechargeable batteries are not to be recharged
Rechargeable batteries must be removed before recharging
Rechargeable batteries should only be recharged under adult supervision
Do not mix alkaline, standard (carbon-zinc), or rechargeable (nickel- cadmium) batteries
Exhausted batteries are to be removed
Do not mix old and new batteries
Do not dispose of batteries in fire; batteries may explode or leak
If this product will not be used for an extended period of time,
 remove the batteries from the product
The supply terminals are not to be short-circuited
Batteries are to be inserted with correct polarity
Clean the battery contacts and also those of the product prior to battery installation
As always, dispose of batteries in an eco-friendly manner

FCC Part 15 Compliance

The device complies with Part 15 of the FCC Rules. Operation is subject to the following two conditions: (1) this device may not cause harmful interference, and (2) this device must accept any interference received, including interference that may cause undesired operation.

Changes or modifications not expressly approved by the party responsible for compliance could void the user's authority to operate the product.

Note: This equipment has been tested and found to comply with the limits for a Class B digital device, pursuant to Part 15 of the FCC Rules. These limits are designed to provide reasonable protection against harmful interference in a residential installation. This equipment generates, uses and can radiate radio frequency energy and, if not installed and used in accordance with the instructions, may cause harmful interference to radio communications. However, there is no guarantee that interference will not occur in a particular installation. If this equipment does cause harmful interference to radio or television reception, which can be determined by turning the equipment off and on, the user is encouraged to try to correct the interference by one or more of the following measures:

Reorient or relocate the receiving antenna.
Increase the separation between the transmitting equipment and receiver.
Connect the equipment into an outlet on a circuit different from that to which
 the receiver is connected.
Consult the dealer or an experienced radio technician for help.



EB Excalibur, Inc.,
Miami, Florida • www.EBExcalibur.com
service@EBExcalibur.com
© 2010 EB Excalibur, Inc.
Actual product may differ slightly from photograph.

August 13, 2010