



Live Like a Pro!

# Smart Weather Station with Rain Gauge

## Instruction Manual

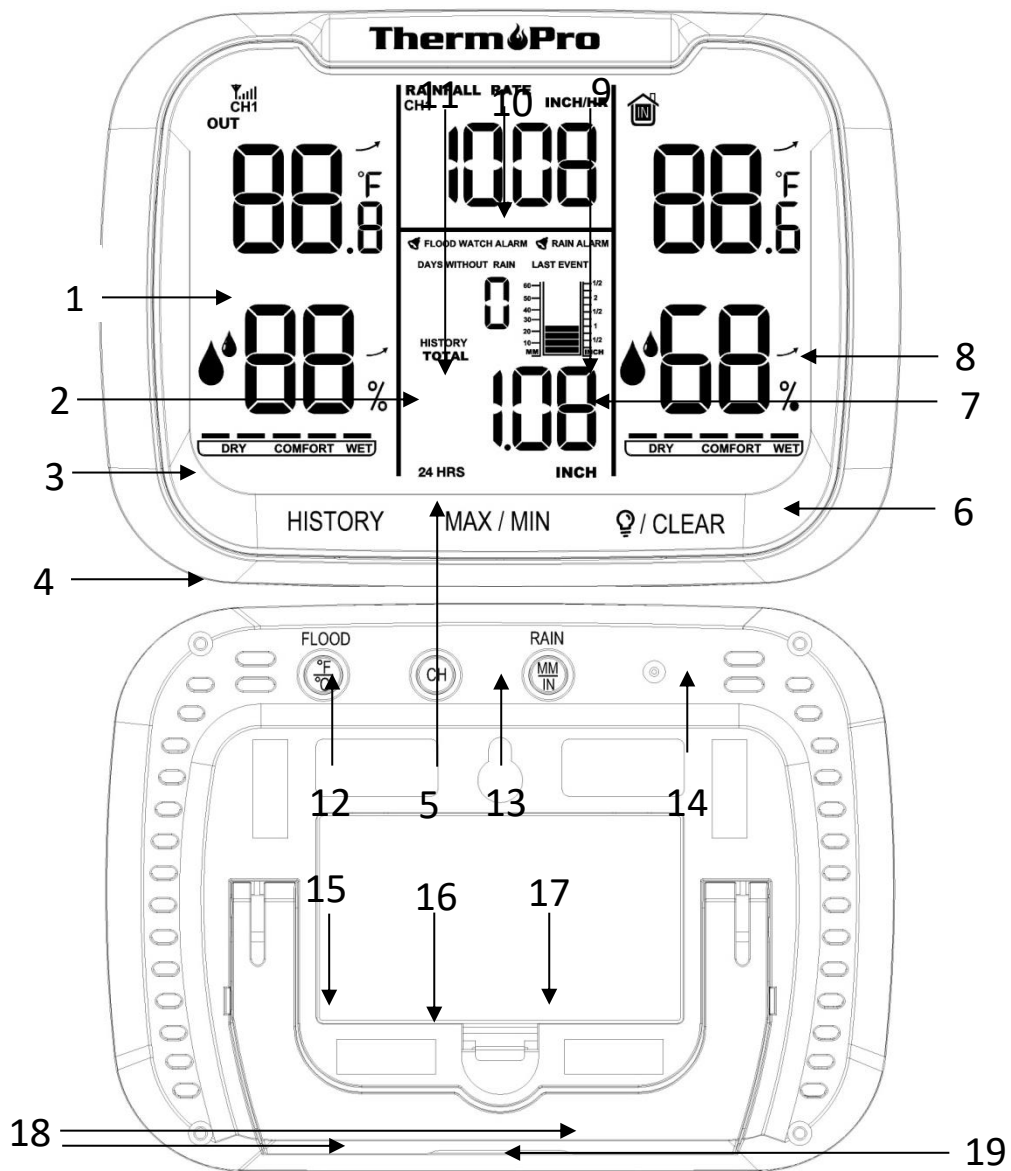
### Introduction

Thanks for your purchasing of ThermoPro Smart Weather Station with Rain Gauge, not only will you be able to remotely monitor indoor/outdoor temperature and humidity, but also provides reliable rain measurements, a programmable rain alarm and flood watch alarm. To ensure the best possible product performance, please read this manual in its entirety and retain it for future reference.




### Components

- 1 x Base Station Unit(Receiver)
- 1 x Rain Gauge(Transmitter)
- 4 x AA Batteries
- 5 x Rubber Stoppers
- 5 x Screws
- 1 x User Manual

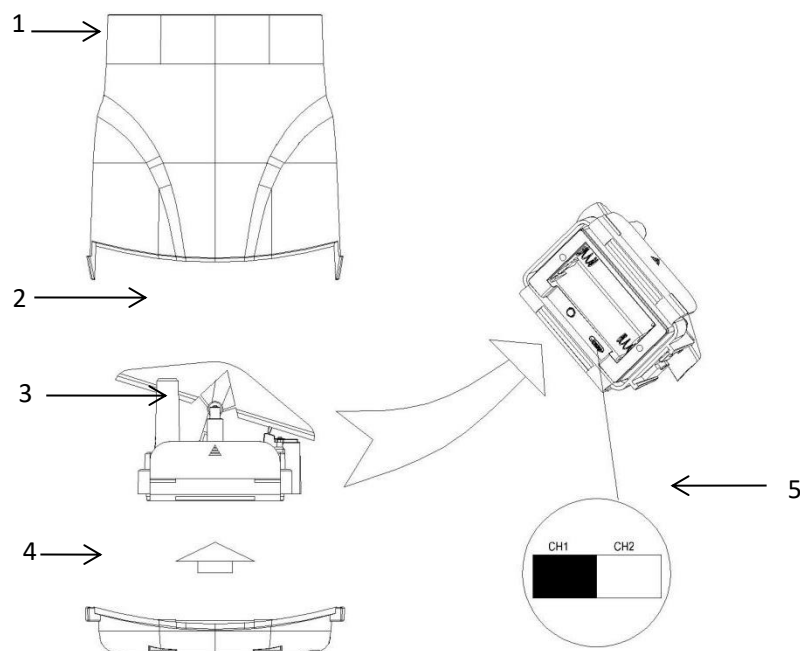
### Features



1. Outdoor temperature
2. Days without rain
3. Outdoor humidity
4. Humidity Level
5. HISTORY
6. Indoor humidity
7. LAST EVENT
8. Indoor temperature
9. Rain alarm
10. RAINFALL RATE.
11. FLOOD WATCH ALARM.
12. HISTORY
13. MAX/MIN.

14.  / CLEAR
15.  FLOOD
16. CH
17.  RAIN
18. Magnet
19. Wall hanging hole
20. Battery Compartment.

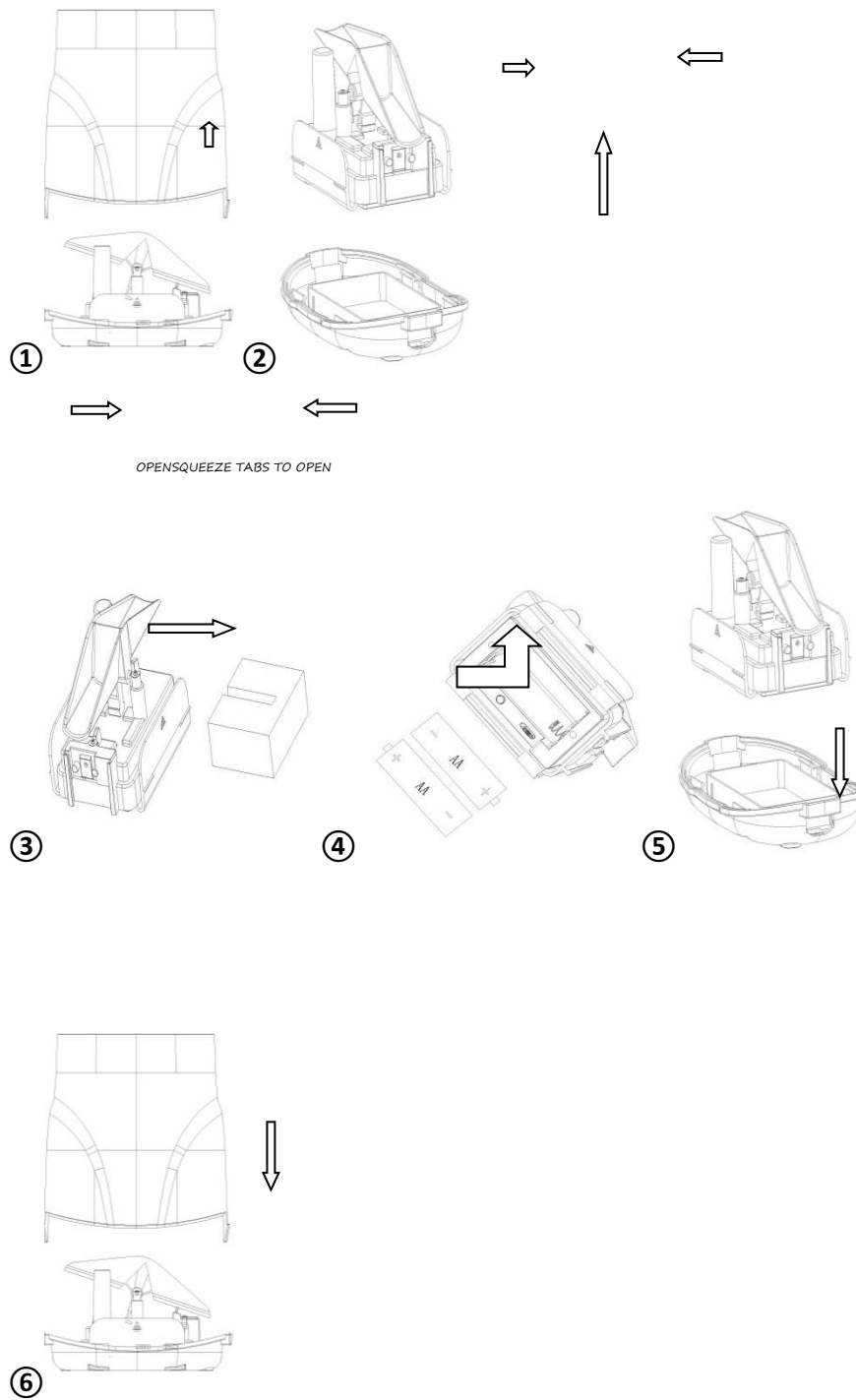
## Features & Benefits



1. Rain Gauge Cover
2. Rain Gauge Tipping Cups (Collects and empties rain for continuous rain measurement)
3. Battery Compartment & Electronics Box
4. Rain Gauge Base
5. CH1-CH2 Switch (ID code that must match display CH1-CH2 switch to ensure units synchronize)

## Rain Gauge Setup

### Install or Replace Batteries




- ① Separate rain gauge cover from the base by gently squeezing tabs and

pulling the cover upwards.

- ② Remove battery box by squeezing the two tabs on each end together.
- ③ Remove and discard rain gauge stabilizer.
- ④ Insert 2 x AA batteries into the battery compartment as shown. Follow the polarity (+/-) diagram in the battery compartment.
- ⑤ Securely place the battery box back into the rain gauge base.
- ⑥ Securely re-attach the rain gauge cover onto rain gauge base.

## Alarms

### Flood Watch Alarm


Press the  button to activate or deactivate the FLOOD WATCH ALARM. When the alarm is ON and flood and saturation conditions are present, an alarm will sound and the FLOOD WATCH indicator will blink on the display. Flood conditions include:

- > 1.4" (35.6 mm) in the last 2 hours
- > 1.6" (40.6 mm) in the last 8 hours
- > 1.8" (45.7 mm) in the last 24 hours

If flood or saturation conditions occur, the alarm sounds for 1 minute or until any button is pressed. If no buttons are pressed, the FLOOD WATCH indicator will flash on the display, and the alarm will sound three times on the hour for the next 8 hours.

NOTE: The rain gauge measures rainfall even while the flood alarm is off.

### Rain Alarm

Press the  button to activate or deactivate the RAIN ALARM.

When the alarm is ON and any rainfall is detected an alarm will sound and the RAIN ALARM indicator will blink on the display. The alarm sounds for 1 minute or until any button is pressed. If no buttons are pressed, the alarm will stop and the RAIN ALARM icon will flash for up to 30 minutes.

NOTE: The FLOOD WATCH ALARM and RAIN ALARM are NOT intended to be a safety device or warning system.

## Declaration of Conformity

Hereby, the manufacturer declares that this product complies with the basic requirements and applicable regulations of the Radio Equipment Directive 2014/53/EU, the EMC Directive 2014/30/EU. The complete declaration of conformity can be found at:

<https://itronicsmall.com/eu-declaration-of-conformity/>

## Disposal of the Electronic Appliance



This electronic appliance should not be disposed of with normal household waste. Dispose of the unit at an approved facility or at your local recycling center. Please observe the current rules and regulations when disposing of the appliance. Contact your local council if in doubt.

## Disposal of Batteries



Please dispose of your batteries properly in containers especially set up as retailers. Batteries do not belong in the household waste. Dispose of batteries at an approved facility or at your recycling center. Contact your local council if in doubt.

## Limited One-Year Warranty

ThermoPro warrants this product to be free of defects in parts, materials and workmanship for a period of one year, from date of purchase.

Should any repairs or servicing under this warranty be required, contact Customer Service by phone or email for instructions on how to pack and ship the product to ThermoPro.

This warranty gives you specific legal rights and you may also have other rights which vary from state to state.

## Customer Service

Call or Text: 1-877-515-7797(USA & Canada only)

44-80-164-1683(UK)

Email: [service@buythermopro.com](mailto:service@buythermopro.com)

Hours: Weekdays 8:00 AM-8:00 PM EST(USA & Canada only)

1:00 PM-12:00 PM CET(UK)

### **FCC Warning:**

This equipment has been tested and found to comply with the limits for a Class B digital device, pursuant to part 15 of the FCC Rules. These limits are designed to provide reasonable protection against harmful interference in a residential installation. This equipment generates, uses and can radiate radio frequency energy and, if not installed and used in accordance with the instructions, may cause harmful interference to radio communications. However, there is no guarantee that interference will not occur in a particular installation. If this equipment does cause harmful interference to radio or television reception, which can be determined by turning the equipment off and on, the user is encouraged to try to correct the interference by one or more of the following measures:

- Reorient or relocate the receiving antenna.
- Increase the separation between the equipment and receiver.
- Connect the equipment into an outlet on a circuit different from that to which the receiver is connected.
- Consult the dealer or an experienced radio/TV technician for help.

Caution: Any changes or modifications to this device not explicitly approved by manufacturer could void your authority to operate this equipment.

This device complies with part 15 of the FCC Rules. Operation is subject to the following two conditions: (1) This device may not cause harmful interference, and (2) this device must accept any interference received, including interference that may cause undesired operation.

The device has been evaluated to meet general RF exposure requirement. The device can be used in portable exposure condition without restriction.