



Sentinel Transceiver User's Manual

Getting Started

The Sentinel Wireless Transceiver module consists of the following hardware:

- Sentinel transceiver unit (integrated into Relume lamp assembly)
- RF Antenna
- Power Cable (Integrated into Relume lamp power supply)
- Interface Cable (available for special installation requirements)

Installation:

The Sentinel transceiver is shipped pre-installed in the Relume lamp assembly. The antenna is shipped separately to avoid damage. The antenna **MUST** be installed on the lamp assembly before the assembly is powered up and tested.

Setup Instructions:

1. Mount the lamp assembly with the Sentinel transceiver. Do not apply power
2. Screw the antenna firmly to the antenna mount on the top of the lamp assembly
3. Apply power to the lamp assembly
4. Test for correct system operation

FCC Notice

This device complies with part 15 of the FCC Rules. Operation is subject to the condition that this device does not cause harmful interference.

Note: This equipment has been tested and complies with Part 15 and Part 90 of the FCC Rules. These limits are designed to provide reasonable protection against harmful interference. This equipment generates, uses, and can radiate radio frequency energy, and, if not installed and used in accordance with the instructions, may cause harmful interference to radio communications. However, there is no guarantee that interference will not occur in a particular installation. If this equipment does cause harmful interference to radio or television reception, try to correct the interference by one or more of the following measures:

- Reorient or relocate the equipment.
- Increase the separation distance between the affected equipment and receiver.
- Consult ECO Wireless, LLC for help.

Any changes or modifications to this equipment not expressly approved by ECO Wireless, LLC could void the authorization to operate the equipment.

RF Exposure Information



This equipment complies with the FCC RF radiation requirements for controlled environments. To maintain compliance with these requirements, the antenna and any radiating elements should be installed to ensure that a minimum separation distance of 20cm is maintained from the general population.

Professional Installation

Changes or modifications not expressly approved by the party responsible for compliance could void the user's authority to operate the equipment.

Industry Canada

This Class B digital apparatus meets all requirements of the Canadian Interference Causing Equipment Regulations.

Operation is subject to the following two conditions: (1) this device may not cause harmful interference, and (2) this device must accept any interference received, including interference that may cause undesired operation.

Cet appareillage numérique de la classe B répond à toutes les exigences de l'interférence canadienne causant des règlements d'équipement. L'opération est sujette aux deux conditions suivantes: (1) ce dispositif peut ne pas causer l'interférence nocive, et (2) ce dispositif doit accepter n'importe quelle interférence reçue, y compris l'interférence qui eut causer l'opération peu désirée.

Sentinel Municipal Light Software Basic Operating Commands

This is a summary of the commands available on the Sentinel software.

EDIT

LAMPS

ADD – open this dialog to add a new lamp (requires Internet access)

DELETE – open this dialog to delete an existing lamp (requires Internet access)

MODIFY – open this dialog to modify an existing lamp (requires Internet access)

GROUPS

ADD GROUP – open this dialog to add a new group

DELETE GROUP – open this dialog to delete an existing group

SET GROUP(s) FOR A LAMP – open this dialog to add a lamp to an existing group

SET LAMP TO EMERGENCY – open this dialog to set a group to emergency flashing mode

CANCEL LAMP EMERGENCY – open this dialog to can a group from emergency flashing mode

VIEW

ZOOM IN

ZOOM OUT

ZOOM FULL

ZOOM LAST

PAN

SPECIAL CONTROL

ALL LAMPS – open this dialog to set all lamps to the same operating state

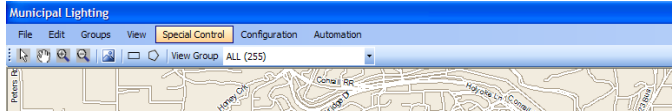
GROUP – open this dialog to set any group to the same operating state

SINGLE – open this dialog to control a single lamp

Mousing over any lamp on the map will display status for that lamp. Right clicking on any lamp in the list view at the bottom will bring up basic lamp commands and provide the user with the ability to center that lamp on the map.

Lamp Control commands

To control the lamps, use the SPECIAL CONTROL section of the menu.



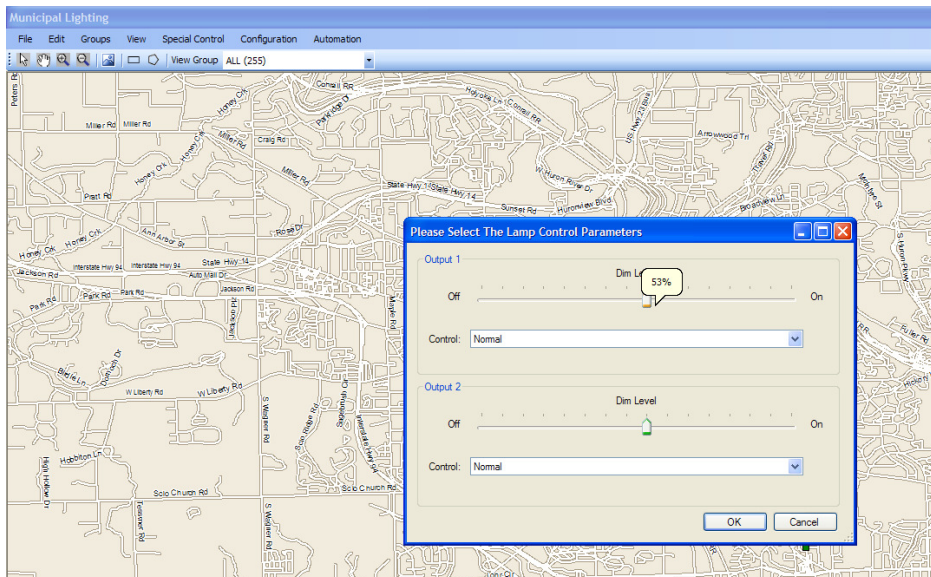
SPECIAL CONTROL

ALL LAMPS – open this dialog to set all lamps to the same operating state

GROUP – open this dialog to set any group to the same operating state

SINGLE – open this dialog to control a single lamp

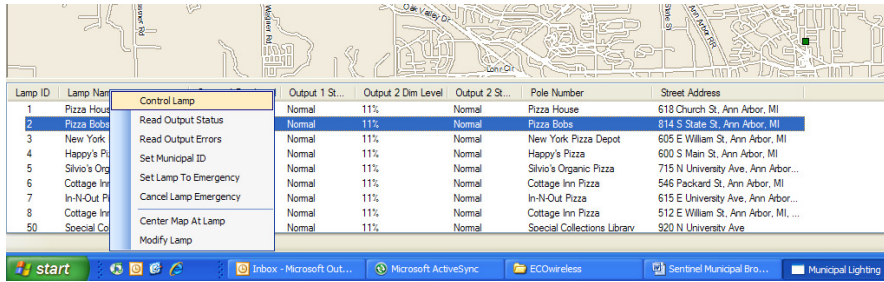
The operation options are to control all lamps in the area, a pre-defined group of lamps, and a single lamp. The control menu window appears to allow the user to control the two light outputs on the Sentinel lamp controller.



Use the mouse to move the sliders to control the **Output1 (white for San Jose)** and **Output2 (Yellow for San Jose)** light amplitude to the required level. Click OK to send the signal.

The menu is the same for Group control and Single control

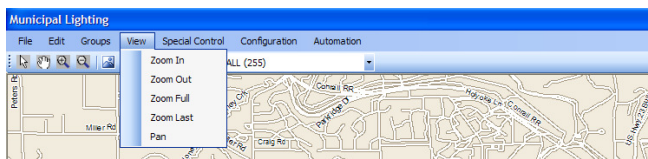
You can also control single lamps by selecting them from the list on the bottom of the screen and using a right mouse click to bring up an option window



Select control lamp to display the control window for the selected lamp. The lamp can be controlled as described previously.

Map Control commands

To maneuver around in the included map, use the view controls in the menu or the map control buttons in the upper left side of the Municipal Light software window



VIEW

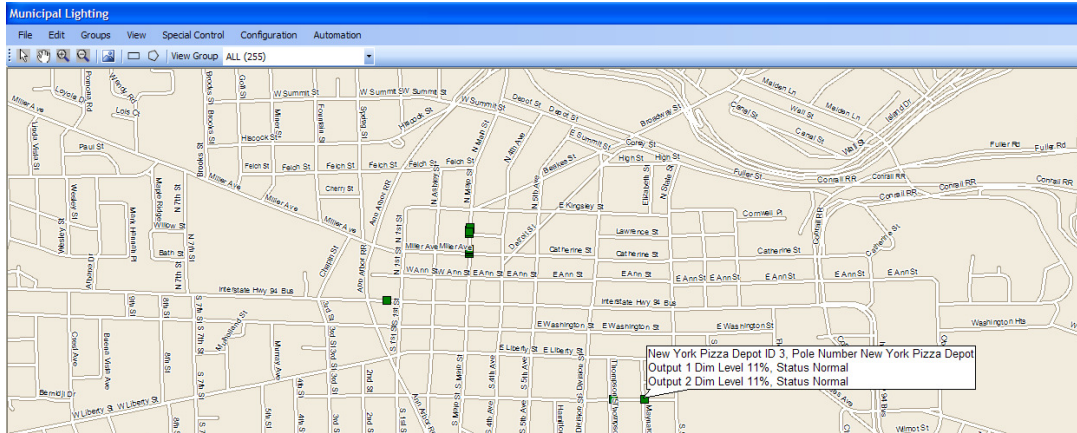
- ZOOM IN
- ZOOM OUT
- ZOOM FULL
- ZOOM LAST
- PAN

To zoom in or out, select the option from the menu or click on the control button. To activate the zoom, left click with the mouse in the map area.

Use the “hand” to pan to a new place on the map by left clicking and holding while moving the mouse after selecting the pan (hand) control.

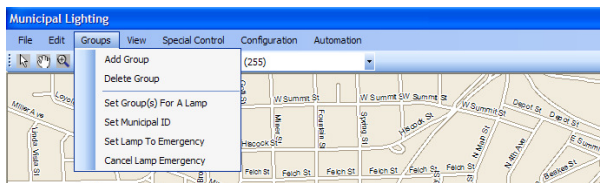
Select the “arrow” in the far left location to exit the map control and select items on the map again.

Notice that when the mouse is positioning over a lamp in the map with a close zoom, information about the lamp is displayed in an information window



Group Control commands

Group commands are used to modify the settings of many lamps with a single command. Groups can be created, edited, and controlled from the group menu



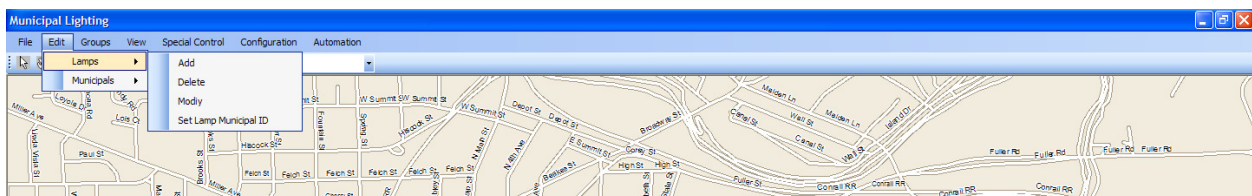
GROUPS

- ADD GROUP – open this dialog to add a new group
- DELETE GROUP – open this dialog to delete an existing group
- SET GROUP(S) FOR A LAMP – open this dialog to add a lamp to an existing group
- SET LAMP TO EMERGENCY – open this dialog to set a group to emergency flashing mode
- CANCEL LAMP EMERGENCY – open this dialog to can a group from emergency flashing mode

Group setup is part of the initial lamp configuration and should not be used by the average user

Edit Lamp commands

Edit lamp commands are used to add new lamps to the database of available lamps.





EDIT

LAMPS

ADD – open this dialog to add a new lamp (requires Internet access)

DELETE – open this dialog to delete an existing lamp (requires Internet access)

MODIFY – open this dialog to modify an existing lamp (requires Internet access)

Edit Lamp setup is part of the initial lamp configuration and should not be used by the average user