

Battery Safety Guidelines

- To prevent battery leakage: Be sure to insert batteries correctly.
- Batteries should be replaced by adult.
- Never dispose of batteries in fire as this may cause them to explode.
- Do not mix old and new batteries (replace all batteries at the same time).
- Do not mix alkaline, standard (carbon-zinc) or rechargeable (nickel-cadmium) batteries (or equivalent). Only batteries of the same or equivalent type as recommended are to be used.
- Non-rechargeable batteries are not to be recharged.
- Always remove exhausted or dead batteries from product. Remove batteries from product that is not going to be used for a long time. Otherwise, the batteries may leak and cause damage.
- The supply terminals are not to be short-circuited.
- Make sure battery compartment is secure.
- Do not immerse battery operated toys. Wipe clean only.

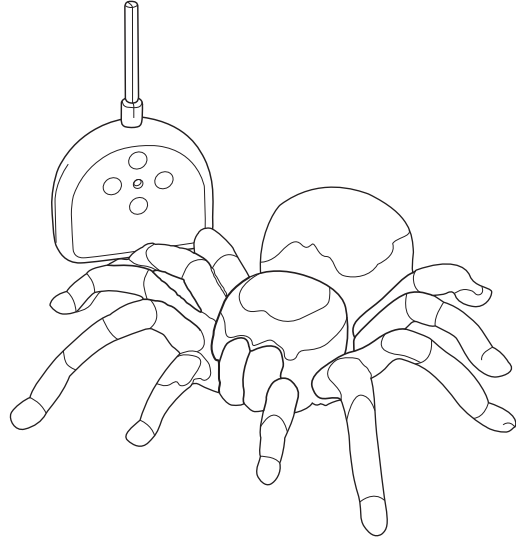
FCC NOTE: THE MANUFACTURER IS NOT RESPONSIBLE FOR ANY RADIO OR TV INTERFERENCE CAUSED BY UNAUTHORIZED MODIFICATIONS TO THIS EQUIPMENT. SUCH MODIFICATIONS COULD VOID THE USER'S AUTHORITY TO OPERATE THE EQUIPMENT.

FCC ID: Q6N149EL



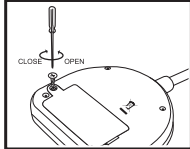
P38-EL150-81001000

RC TARANTULA INSTRUCTION MANUAL

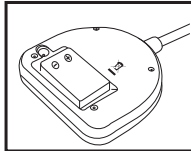


Battery Installation

Remote Controller:

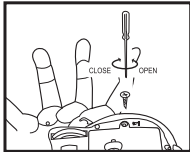


1) Open or close the cover with a Philips screwdriver.

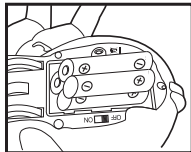


2) Insert one 9V (6LR61) battery.

Tarantula:

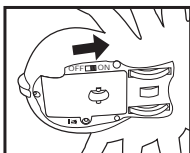


1) Open or close the cover with a Philips screwdriver.



2) Insert 4 size "AA" (LR6) 1.5 V batteries.

Assembly



Turn the base unit switch to "ON".

Bring your RC Tarantula's movements to life by setting him in motion.

● Press these button(s), your RC Tarantula will move:

