

Instruction
 Size: 8.5" W x 11" H
 Color: Black

Radio Controlled T-Rex

#37316



KEEP THESE INSTRUCTIONS FOR FUTURE REFERENCE - DO NOT DISCARD

Tyrannosaurus Rex, or "King of the Dinosaurs" roamed the earth during the Cretaceous period (65-85 million years ago). This imposing creature stood almost 20 feet tall and weighed nearly 12,000 pounds! T-Rex, as it is nicknamed, had long, powerful rear legs with three claws on each foot like a giant bird, and relatively tiny forelimbs or "arms." Because of its massive size, Tyrannosaurus Rex was thought to be on a constant mission to find food and used its ferocious roar to startle and flush out prey. It consumed its food using its razor sharp, serrated teeth. Bones of T-Rex have been found in the western region of North America.

Operating Instructions:

The Animal Planet T-Rex receives radio frequency at 27MHz.

To operate T-Rex, install 4 x AA batteries into the body of the dinosaur and turn the Power switch to the "On" position. (See Illustration - T-REX battery diagram)

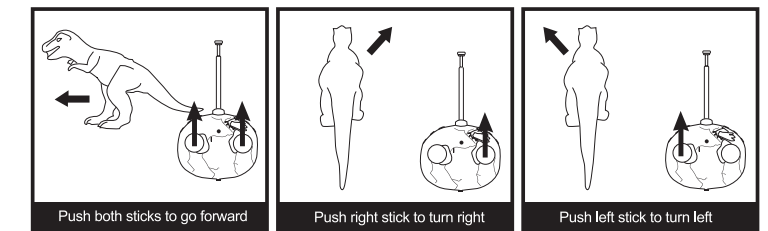
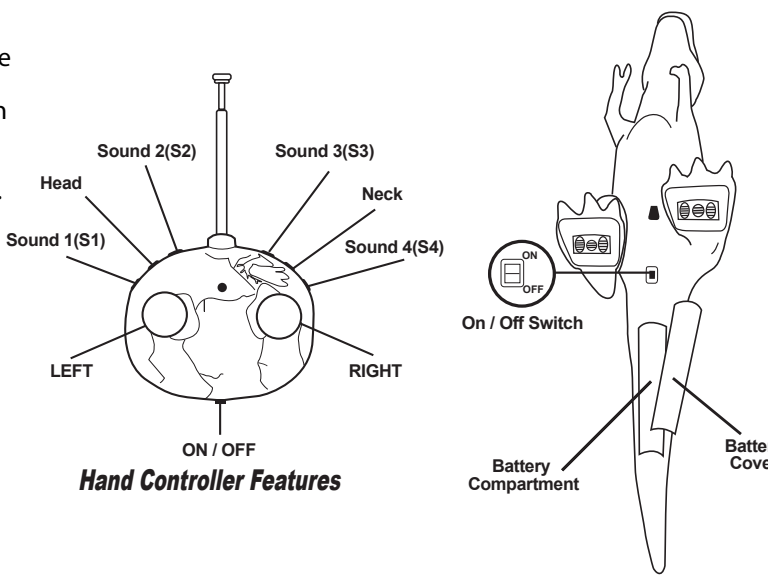
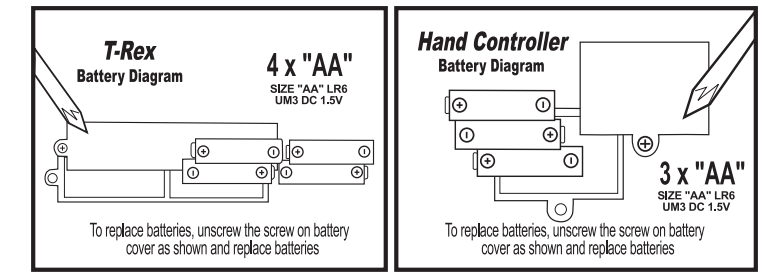
Next, install 3 AA batteries in the hand controller. Turn the Power switch to "On." The red LED indicates that the controller is operational and your T-Rex is ready to come to life.

Move the joysticks on the hand controller to move the T-Rex "Forward," "Left" and "Right." Six Motion and Sound Buttons let the T-Rex roar, open and close its mouth and move its head. (See Illustration #). By manipulating the various function buttons on the hand controller you can control your RC T-Rex. See chart on next page.

Safe Battery Usage

Batteries should be installed and replaced by adults. Do not dispose off batteries in fire, battery may explode or leak. Do not mix old and new batteries. Do not mix alkaline, standard (carbon zinc) or rechargeable (Nickel-cadmium) batteries. Only batteries of the same or equivalent type as recommended are to be used. Insert batteries according to diagram for correct polarity. Remove dead batteries from the toy. Do not short-circuit supply terminals. Do not charge non-rechargeable batteries.

The device complies with Part 15 of the FCC rules. Operation is subject to the following conditions: this device may not cause interference, and this device must accept any interference received, including interference that may cause undesired operation.



Ask your cable or satellite company for Animal Planet. Visit Animal Planet at Discovery.com

Batteries are for demonstration purposes only. They should be replaced upon purchase for optimal performance. Do not mix old and new batteries. Do not mix alkaline, standard (carbon zinc), or rechargeable (nickel-cadmium) batteries.

© 2006 Discovery Communications, Inc. All rights Reserved. Animal Planet logo, and Animations are trademarks of Discovery Communications, Inc. © 2006 Geofrey, Inc. Distributed by Toys "R" Us, Inc. Wayne, NJ 07470 Made in China www.toyrus.com

FCC ID: Q8N189EL
 This device complies with Part 15 of the FCC rules. Operation is subject to the following two conditions:
 (1) this device may not cause harmful interference, and
 (2) this device must accept any interference received, including interference that may cause undesired operation.

Operating Instructions:

Move the joysticks on the hand controller to move the T-Rex "Forward," "Left" and "Right." Six Motion and Sound Buttons let the T-Rex roar, open and close its mouth and move its head. (See Illustration #).

By manipulating the various function buttons on the hand controller you can control your RC T-Rex. See chart below:

Function Buttons - Operation Matrix			
Function Buttons	Reaction	Function Buttons	Reaction
Sound 1 (S1)	T-Rex Roars Sound #1	L Joystick + S1	Roaring and turning Left
Sound 2 (S2)	T-Rex Roars Sound #2	L Joystick + S2	"
Sound 3 (S3)	T-Rex Roars Sound #3	L Joystick + S3	"
Sound 4 (S4)	T-Rex Roars Sound #4	L Joystick + S4	"
Head	Mouth Movement	Head & Neck	Mouth & Head Movement
Neck	Head Swings	Head + L Joystick	Turns Left with Mouth movement
Push LEFT Joystick	Turns to Left	Head + R Joystick	Turns Right with Mouth movement
Push RIGHT Joystick	Turns to Right	Neck + L Joystick	Turns Left with Head movement
Push L & R Joystick	Moving Forward	Neck + R Joystick	Turns Right with Head movement
Head + S1	Roars with Mouth Movement	R Joystick + S1	Roaring and turning Right
Head + S2	"	R Joystick + S2	"
Head + S3	"	R Joystick + S3	"
Head + S4	"	R Joystick + S4	"
Neck + S1	Roars and Head Swinging	L + R + S1	Roaring and Moving Forward
Neck + S2	"	L + R + S2	"
Neck + S3	"	L + R + S3	"
Neck + S4	"	L + R + S4	"
L + R + Head	Moves Forward w/mouth movement	L + R + Neck	Moves Forward with Head movement
L + R + Head + Neck		Moves forward with mouth and head movement	

FCC NOTE:

THE MANUFACTURER IS NOT RESPONSIBLE FOR ANY RADIO OR TV INTERFERENCE CAUSED BY UNAUTHORIZED MODIFICATIONS TO THIS EQUIPMENT. SUCH MODIFICATIONS COULD VOID THE USER'S AUTHORITY TO OPERATE THE EQUIPMENT.