

AP_37328_instruction sheet : 210mm X 297mm (English)

Radio Control

Pterodactyl

#37328



6+

Li-Po x 1 included
AA x 6 not included

There's something in the sky and it's not a bird or a plane - in fact, it's not from our world at all - it's a Pterodactyl! The radio-controlled replica of this graceful pre-historic reptile takes flight with kids controlling the action, using the fully-directional hand-held device. The controller choreographs the Pterodactyl's swooping dives and tight turns. With a little practice, kids can catch the wind currents and the RC Pterodactyl will fly for up to 30 minutes.

About Pterosaurs

The Pterodactyl, also referred to as Pterosaur meaning "winged lizard," was the first vertebrate to evolve into flight. These small flying reptiles lived during the Mesozoic period 250 million years ago and ranged from the size of small birds to have sweeping wing spans of up to 60 feet. Their skeletons were made of hollow bones covered with leathery membranes stretching from the chest out to what is imagined to have been an extremely lengthened fourth finger. Pterodactyls had sizable brains and used their intelligence and sharp eyesight to hunt prey while in flight, mostly fish and other sea creatures.

RC Pterodactyl Set includes:

EPP Pterodactyl (Fig.1)
Controller/charger with built-in charging wire (Fig.2)
WARNING: Always TURN OFF when not flying!

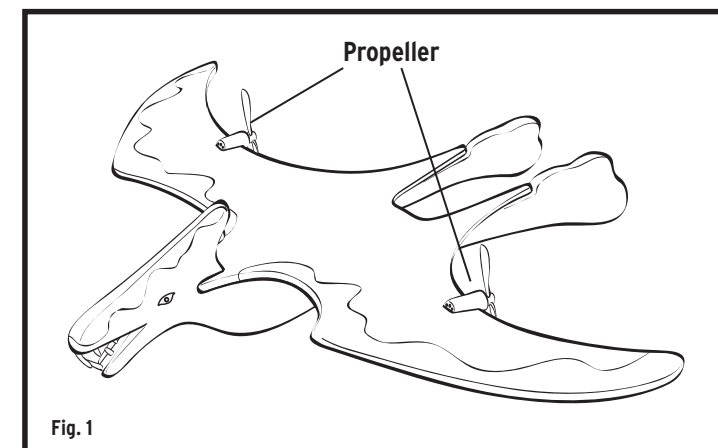


Fig. 1

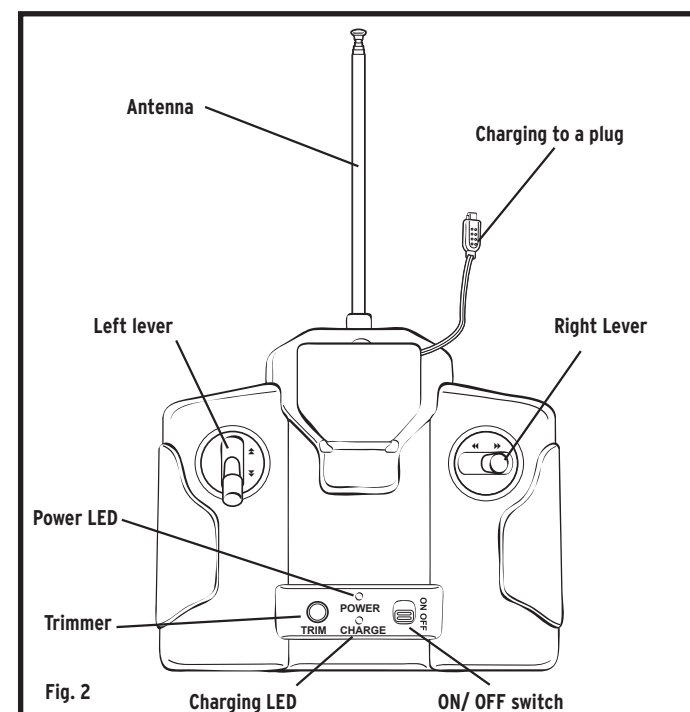


Fig. 2

Flying Preparation:

Battery Installation - Transmitter (Fig. 4)

1. Unscrew the battery door with a Phillips head screwdriver
2. Insert 6 x AA alkaline batteries in the battery compartment following the polarity indication
3. Replace the battery door

Battery Charging:

Your Pterodactyl should always be "Power-Off" when it is not in use. Detach the connecting wire from the controller unit and plug into the socket on Pterodactyl. The green LED will light up and turn off when the built-in battery is fully charged in around 30 minutes. A fully charged battery can serve up to 10 minutes flight time.*

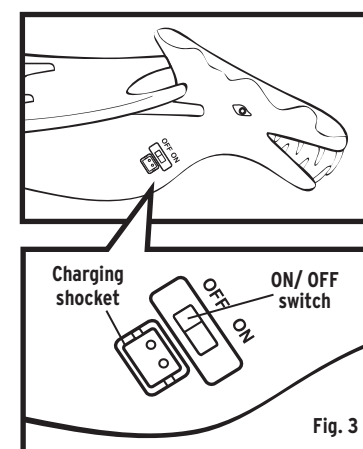


Fig. 3

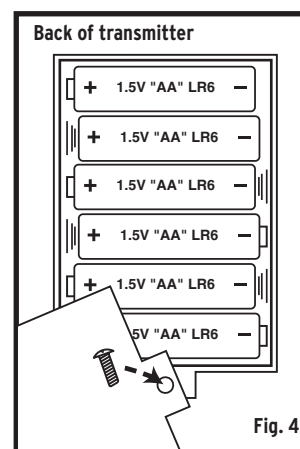


Fig. 4

Playground and Weather Selection:

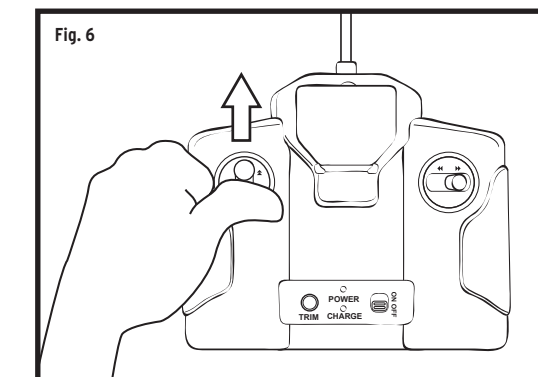
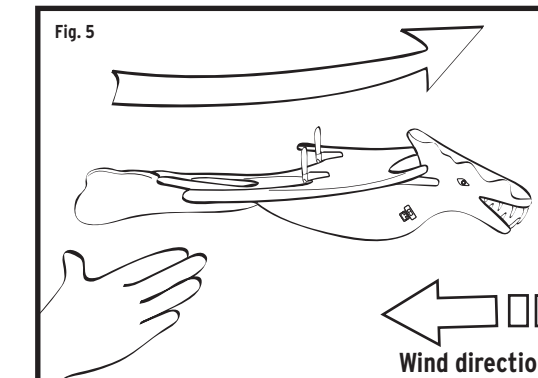
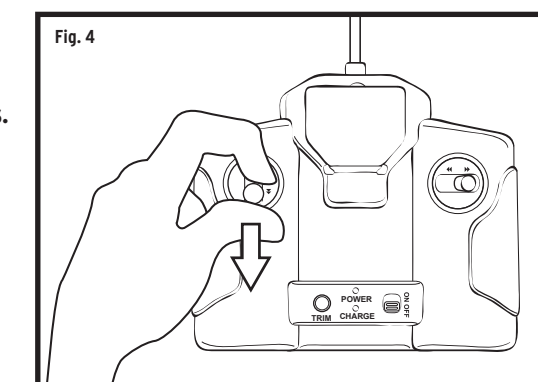
Indoor: Playing in a hall is recommended, keeping away from electric fans and air conditioners.
Outdoor: Pterodactyl will fly better on a sunny day with calm wind or slight breeze. We suggest playing on grass to protect your Pterodactyl from crashing on hard rock or ground.

Cautions:

Your Pterodactyl will be blown way under strong wind because of its light weight. Do not launch your Pterodactyl when it is raining, snowing, or near high power cables.

Flying Your Pterodactyl:

1. Set the ON/OFF switch on your Pterodactyl to ON. **MAKE SURE THE TRANSMITTER IS "OFF"** when turning on the Pterodactyl.
2. Screw in and extend the telescopic antenna on transmitter.
3. Set the left lever on transmitter to MINIMUM throttle, then set it to ON.
4. Make sure the Pterodactyl can go nearly straight:
 - Set the right lever on transmitter to neutral position, then push the throttle in the middle to drive the Pterodactyl and hand throw the Pterodactyl out to observe its flying trend.
 - Tune the steering trimmer to left when Pterodactyl has the trend to fly right or tune the trimmer to right when it goes left.
 - Maneuver the left lever to MINIMUM (downward) to stop the Pterodactyl. (Fig. 4)
5. Make sure to let the Pterodactyl face to the wind when you throw it. It is important that you maneuver throwing it horizontally. (Fig. 5)
6. Set the right lever in its neutral position, then push the throttle to MAXIMUM (upward) to drive the Pterodactyl and hand throw it out for flight. (Fig.6)
7. When your Pterodactyl can fly steadily, you can maneuver the right lever control to turn left or right.
8. You can make a safe landing by turning your Pterodactyl to face the wind, then throttle the left lever downward.

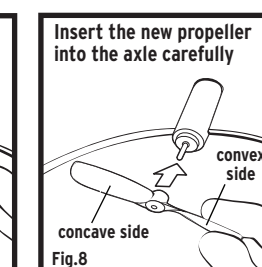
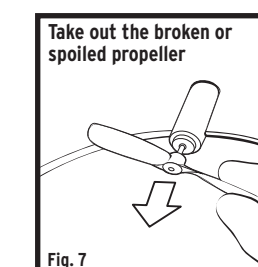


Maintenance

If your Pterodactyl encounters minor damage, you can fix it with pressure sensitive tape.
If your Pterodactyl encounters a broken or spoiled propeller, it can be replaced with the spare propellers provided. (Fig.7 & 8)

Safe Battery Usage:

- Batteries should be installed and replaced by adults.
- Do not dispose off batteries in fire. Battery may explode or leak.
- Do not mix old and new batteries.
- Do not mix alkaline, standard (carbon zinc) or rechargeable (Nickel-cadmium) batteries.
- Only batteries of the same or equivalent type as recommended are to be used.
- Insert batteries according to diagram for correct polarity.
- Remove dead batteries from the toy.
- Do not short-circuit supply terminals.
- Do not charge non-rechargeable batteries.



The device complies with Part 15 of the FCC rules. Operation is subject to the following conditions:
(1) this device may not cause interference, and
(2) this device must accept any interference received, including interference that may cause undesired operation.

Product and Battery Requirement:

EPP Pterodactyl size: 340 (L) x 200 (W) x 85.3 (H) in mm
Pterodactyl: Rechargeable battery built in with rechargeable battery
Charger/Controller: Requires 6 x AA batteries (not included)

Do not mix old and new batteries. Do not mix alkaline, standard (carbon zinc), or rechargeable (nickel-cadmium) batteries.



© 2007 Discovery Communications, Inc. All rights reserved.
Animal Planet logo and Animusings are trademarks of Discovery Communications, Inc., www.animalplanet.com

© Copyright 2007 Geoffrey, Inc., a subsidiary of Toys "R" Us, Inc.
Made in China
Distributed in the United States by Toys "R" Us, Inc., Wayne, NJ 07470
Distributed in Australia by Toys "R" Us (Australia) PTY Ltd., Regents Park NSW 2143
www.toysrus.com

FCC Requirements

Caution: Changes or modifications to this product not expressly approved by the party responsible for compliance may void the user's authority to operate the equipment