

Radio Controlled Rattle Snake

Model Number 38012 (EL322)

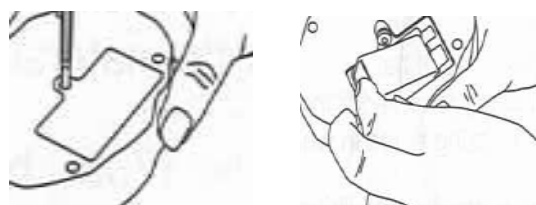
Operating Instructions

Introduction

The radio controlled rattle snake is so life-like; it will make your skin crawl! The easy-to-use radio controller allows you taking charge of the action and moving the snake forward, left, right and stop. The rattle snake is fully assembled that is ready for playing with batteries loaded; it works indoors and outdoors on smooth surface up to 25 feet!

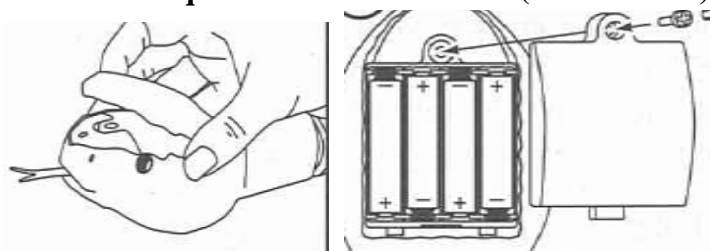
Battery Installation

Controller – Requires 1 x 9V battery (not included)



1. Unscrew and remove the rear panel using a Philips head screwdriver.
2. Insert one 9V battery following the polarities indicated on the battery compartment.
3. Replace the battery door.

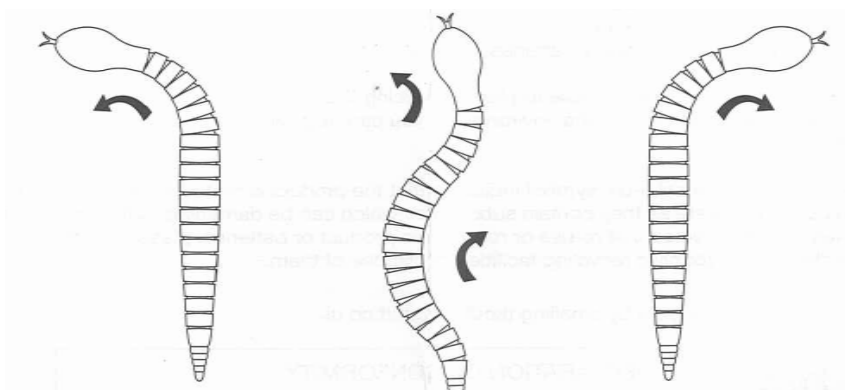
Snake – It requires 4 x AAA batteries (not included).



1. Lift off the upper head section exposing the battery door.
2. Unscrew the battery door with a Philips head screwdriver.
3. Insert 4 x AAA batteries following the polarities indicated on the battery compartment.
4. Replace the battery door and upper head section.

Operating the Rattle snake

- Turn the snake head up side down, slide the switch to ON and then lay the snake on the floor. The snake is stationary and ready to go.
- Hold and slide the switch with the controller to ON; you are now taking the charge controlling the snake moving in desired directions.



- Press the left button making it turns left;
- Press the right button making it turns right;
- Press the center button moving forward.
- Press the “left” or “right” button to stop the movement.

Safe Battery Usage

- **To prevent battery leakage; be sure to insert batteries correctly.**
- **Batteries should be replaced by an adult;**
- **Never dispose of batteries in fire as this may cause them to explode.**
- **Do not mix old and new batteries; replace all batteries at the same time.**
- **Do not mix alkaline, standard (carbon-zinc) or rechargeable batteries.**
- **Only batteries of the same or equivalent type as recommended are to be used.**
- **Non-rechargeable batteries are not to be charged.**
- **Always remove exhausted or dead batteries from product.**
- **Remove batteries from product when not going to be used for a long time. Otherwise Batteries may leak and cause damage to the product.**
- **The supply terminals are not to be short circuited.**
- **Make sure battery compartment is secure.**
- **Do not immerse battery operated toys in water. Wipe clean only.**
-

The device complies with Part 15 of the FCC rules.

Operation is subject to the following conditions:

- (1) This device may not cause harmful interference, and
- (2) This device must accept any interference received, including interference that may cause undesired operation.

CAUTION:

Changes or modifications not expressly approved by the party responsible for Compliance could void the user's authority to operate the equipment.

This equipment has been tested and found to comply with the limits for a Class B digital device, pursuant to Part 15 of the FCC Rules. These limits are designed to provide reasonable protection against harmful interference in a residential installation. This equipment generates, uses and can radiate radio frequency energy and, if not installed and used in accordance with the instructions, may cause harmful interference to radio communications. However, there is no guarantee that interference will not occur in a particular installation.

If this equipment does cause harmful interference to radio or television reception, which can be determined by turning the equipment off and on, the user is encouraged to try to correct the interference by one or more of the following measures:

- Reorient or relocate the receiving antenna.**
- Increase the separation between the equipment and receiver.**
- Connect the equipment into an outlet on a circuit different from that to which the receiver is connected.**
- Consult the dealer or an experienced radio/TV technician for help.**

**Distributed in North America by
Bowen Hill Ltd. Hong Kong
All rights reserved**

**Please retain this instruction for future reference
Made in China**