

# USB Wireless Adapter Quick Installation Guide

11AC 1200M Wireless USB Adapter

EP-AC1601,EP-AC1602,EP-AC1617,EP-AC1618

EDUP

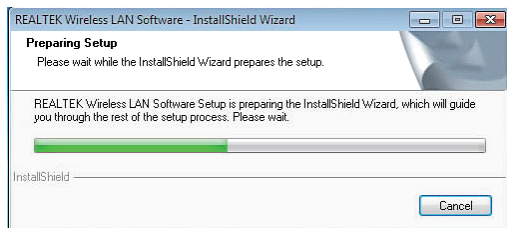
Shenzhen EDUP Electronics Technology Co.,Ltd.

Note: This Manual based on Windows7

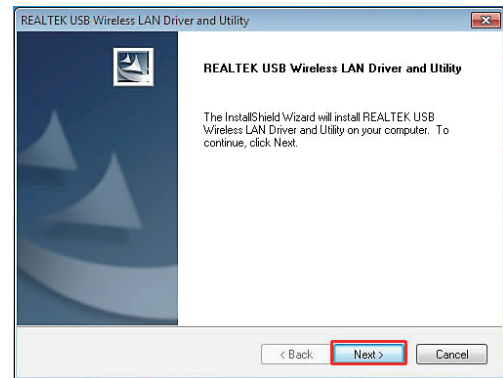
01. Put in the CD and find windows file “windows (xp,vista,win7,win8,win10)” and Setup.exe.



02. Double click Setup.exe file, Software begin to initialization,then click the “Next”.There shows the installation progress.

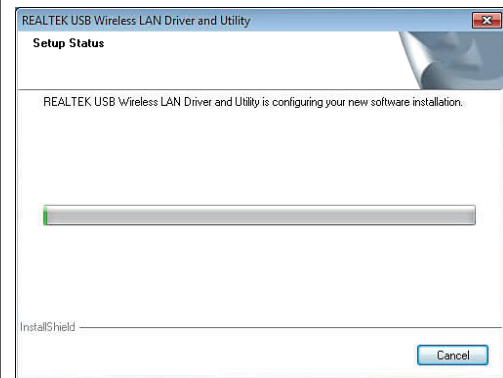


1

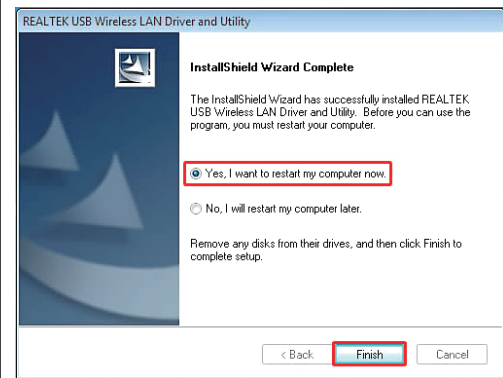


2

03. Do not interrupt installation, Click “finish” to finish the driver installation.The computer automatically restart.



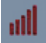

3

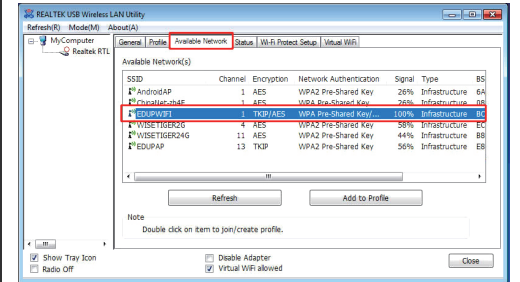


4

04.Plug the Wireless USB Adapter into the USB port of your PC

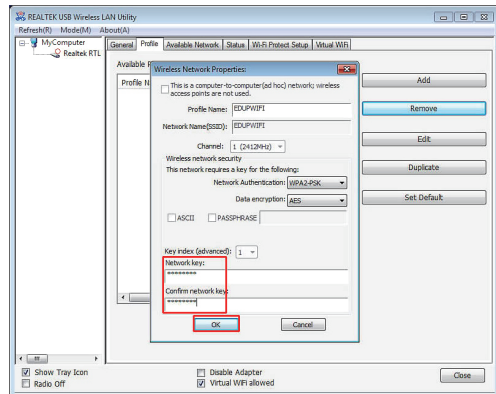
Wireless connection (two ways to realize  
Wireless connection 1 :

05.Click Icon  in the Windows system tray, which locates in the bottom-right corner of your computer screen or double click  , and pops up a message and click”Available Network” Double-click the utility icon or right click the icon ,and the Wireless Network Connection window appears then double click the SSID you preferred.

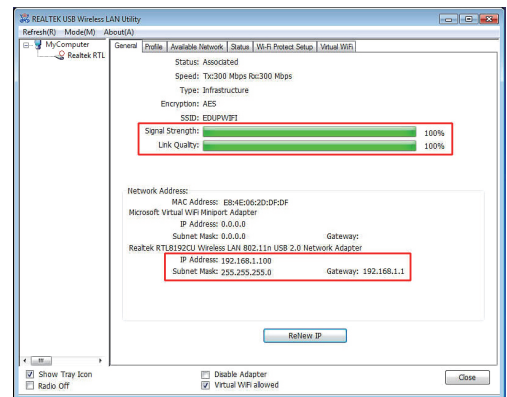


5


Type the encryption key that you wrote down earlier in both the Network key and Confirm network key boxes, and then click “ok”.

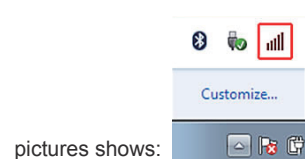


6




7

Note:if there is no icon  , please find it in the on right bottom,it have been hide as following



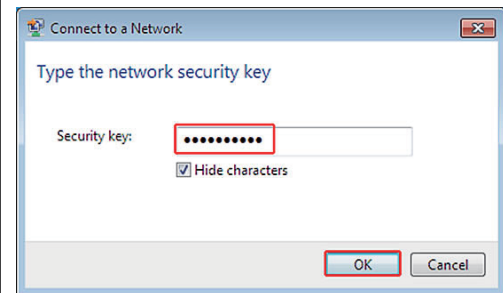
pictures shows:  
Wireless Connection2.

06. Click Icon  which locates in the bottom-right corner of your computer screen,click the wireless network list and choose the SSID you preferred. and double click (Or click “Connect”).



9

Type the encryption key and then click “ok”.



10

## **FCC Warning**

This device complies with part 15 of the FCC Rules. Operation is subject to the following two conditions: (1) This device may not cause harmful interference, and (2) this device must accept any interference received, including interference that may cause undesired operation.

Any Changes or modifications not expressly approved by the party responsible for compliance could void the user's authority to operate the equipment.

**Note:** This equipment has been tested and found to comply with the limits for a Class B digital device, pursuant to part 15 of the FCC Rules. These limits are designed to provide reasonable protection against harmful interference in a residential installation. This equipment generates uses and can radiate radio frequency energy and, if not installed and used in accordance with the instructions, may cause harmful interference to radio communications. However, there is no guarantee that interference will not occur in a particular installation. If this equipment does cause harmful interference to radio or television reception, which can be determined by turning the equipment off and on, the user is encouraged to try to correct the interference by one or more of the following measures:

- ▶ -Reorient or relocate the receiving antenna.
- ▶ -Increase the separation between the equipment and receiver.
- ▶ -Connect the equipment into an outlet on a circuit different from that to which the receiver is connected.
- ▶ -Consult the dealer or an experienced radio/TV technician for help.

## **Specific Absorption Rate (SAR) information:**

This 11AC 1200M Wireless USB Adapter meets the government's requirements for exposure to radio waves. The guidelines are based on standards that were developed by independent scientific organizations through periodic and thorough evaluation of scientific studies. The standards include a substantial safety margin designed to assure the safety of all persons regardless of age or health.

## **FCC RF Exposure Information and Statement**

The SAR limit of USA (FCC) is 1.6 W/kg averaged over one gram of tissue. Device types: 11AC 1200M Wireless USB Adapter (FCC ID: 2AHRDEP-AC1601) has also been tested against this SAR limit. The highest SAR value reported under this standard during product certification for use at the body is 1.106W/kg. the simultaneous transmission SAR value is 1.106W/ kg on the body. This device was tested for typical body-worn operations with the back of the handset kept 5mm from the body. To maintain compliance with FCC RF exposure requirements, use accessories that maintain a 5mm separation distance between the user's body and the back of the handset. The use of belt clips, holsters and similar accessories should not contain metallic components in its assembly. The use of accessories that do not satisfy these requirements may not comply with FCC RF exposure requirements, and should be avoided.

## **Body-worn Operation**

This device was tested for typical body-worn operations. To comply with RF exposure requirements, a minimum separation distance of 5mm must be maintained between the user's body and the handset, including the antenna. Third-party belt-clips,

holsters, and similar accessories used by this device should not contain any metallic components. Body-worn accessories that do not meet these requirements may not comply with RF exposure requirements and should be avoided. Use only the supplied or an approved antenna.

For 5150-5250 frequency band, add below statement for indoor use warning statement on manual,  
Operations in the 5.15-5.25GHz band are restricted to indoor usage only.