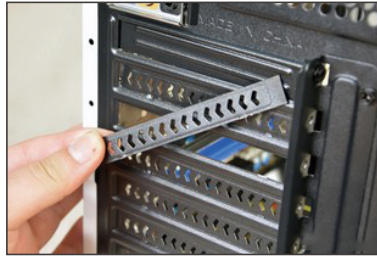


Dual Band PCI Express adapter

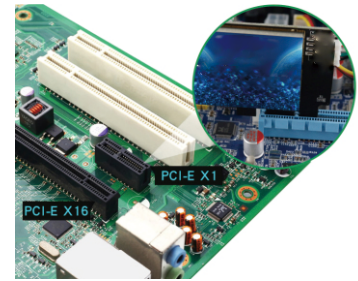
USER MANUAL

1. Hardware Installation

①. Open the side cover of the chassis and remove the chassis tailgate screws of the PCI-E card slot.



②. Insert the product into the corresponding card slot tightly, and either PCI-E/X1/X4/X8/X16 slots are available.



2. How to install the PCI-E card driver?

01. Please install the driver from the included mini CD or download the driver from our official website.

02. Select proper driver to install.


WiFi_21.30.3_Driver64_Win10

03. Click driver for Win10 64bit for next step.



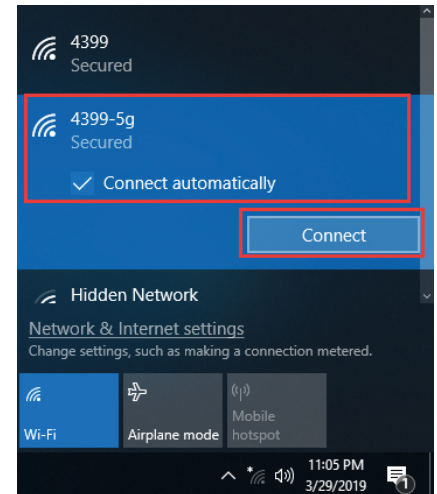
(Driver installation completed after the icon disappears.)

3. How to connect the PCI-E card to Wi-Fi?

01. Open the Internet icon  at the lower right corner of the computer.

02. Searching and connecting the Wi-Fi you preferred on the detected Wi-Fi list.

03. Enter the Wi-Fi password to connect.



FCC Warning

Any Changes or modifications not expressly approved by the party responsible for compliance could void the user's authority to operate the equipment.

This device complies with part 15 of the FCC Rules. Operation is subject to the following two conditions:

- (1) This device may not cause harmful interference, and
- (2) this device must accept any interference received, including interference that may cause undesired operation.

Note: This equipment has been tested and found to comply with the limits for a Class B digital device, pursuant to part 15 of the FCC Rules. These limits are designed to provide reasonable protection against harmful interference in a residential installation. This equipment generates uses and can radiate radio frequency energy and, if not installed and used in accordance with the instructions, may cause harmful interference to radio communications. However, there is no guarantee that interference will not occur in a particular installation. If this equipment does cause harmful interference to radio or

television reception, which can be determined by turning the equipment off and on, the user is encouraged to try to correct the interference by one or more of the following measures:

- Reorient or relocate the receiving antenna.
- Increase the separation between the equipment and receiver.
- Connect the equipment into an outlet on a circuit different from that to which the receiver is connected.
- Consult the dealer or an experienced radio/TV technician for help.

This equipment complies with FCC radiation exposure limits set forth for an uncontrolled environment.

This transmitter must not be co-located or operating in conjunction with any other antenna or transmitter.

This equipment should be installed and operated with minimum distance 20cm between the radiator & you body.