

# Quick Start Guide



Thanks for buying the nixplay Cloud Frame



Please carefully follow this Quick Start Guide



**Warranty:**  
This Cloud Frame comes with a full one-year Manufacturer's Warranty. You do not need to register your warranty. In the event your Cloud Frame requires any servicing, you just need to contact us via our website: [www.nixplay.com](http://www.nixplay.com).

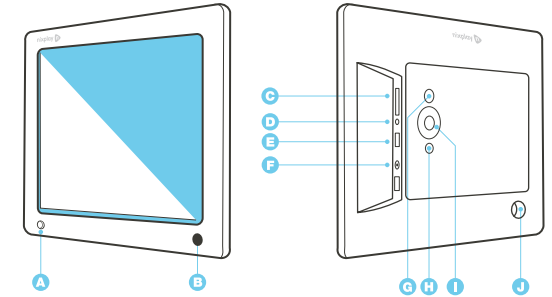
Please provide a copy of your original order information as proof of purchase.

This device complies with Part 15 of the FCC Rules. Operation is subject to the following two conditions: (1) this device may not cause harmful interference, and (2) this device must accept any interference received, including interference that may cause undesired operation.

**nixplay**  
[www.nixplay.com](http://www.nixplay.com)

## 2 GET TO KNOW YOUR FRAME

Basic actions & procedures



Press & Hold 3 secs approx to turn screen ON

- |  |  |
|--|--|
| <p><b>Function</b></p> <ul style="list-style-type: none"> <li><b>A</b> Motion Sensor - Senses movement and turns the Cloud Frame ON and OFF</li> <li><b>B</b> IR Sensor for Remote - Receives signals from the remote</li> <li><b>C</b> SD/SDHC Card Slot - Connect your memory card and view photos</li> <li><b>D</b> Headphone/Speaker Port - Connect your headphones or speakers</li> <li><b>E</b> USB Port - Connect your USB flash drives and view photos</li> <li><b>F</b> Power Adapter DC-in (5V) - Plug-in power cable for power</li> </ul> | <ul style="list-style-type: none"> <li><b>G</b> ON/OFF Button - Press and hold to power on the Cloud Frame</li> <li><b>H</b> Menu Button - This will allow you to go back a step</li> <li><b>I</b> 4-way Menu Control and PLAY Button - Helps you navigate and select</li> <li><b>J</b> Stand screw hole - Screws your stand in</li> </ul> |
|--|--|

## 1 ASSEMBLE FRAME

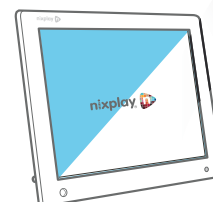
**PART A:**  
The Frame setup



**PART B:**  
The Web setup



**A LIVE FRAME**



### Remote

- A** Delete - Delete selected photo
- B** Rotate and Save - Rotates a selected photo 90 degrees at a time
- C** Share - not implemented yet
- D** WiFi Setting
- E** Slideshow - Starts the slideshow (whenever you are in the Frame's settings or menu)
- F** UP/DOWN/LEFT/RIGHT arrows - Navigate through the Cloud Frame's Menus
- G** OK - Confirms changes made on Cloud Frame
- H** Back - Go back a step in any of the Cloud Frame's menus
- I** Vol- / Vol+ - Adjust the volume if you watch a video
- J** Menu - Goes directly to the main menu
- K** ON/OFF - Turns your Frame on or puts it into standby
- L** Motion Sensor - Turns motion sensor ON/OFF

