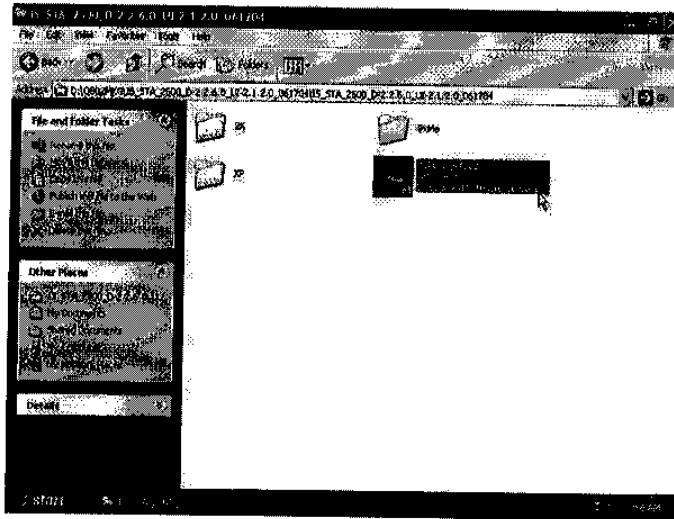


# Q802MKG

# User's Manual

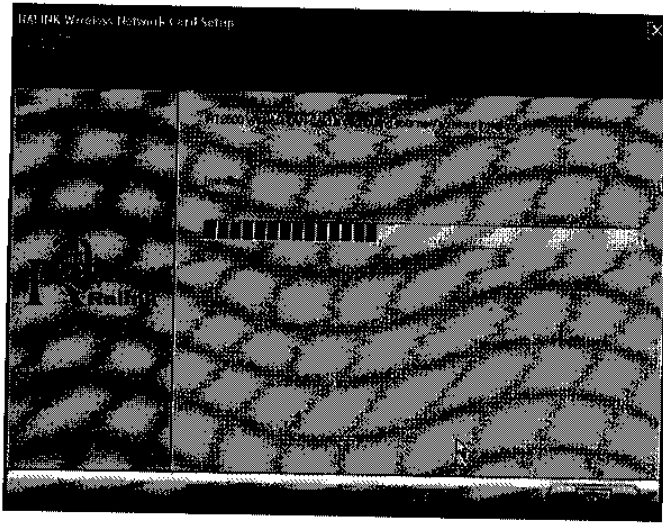
### Driver Installation

1. Go to the directory where the Wireless Adapter Installation stored, then double-click **Setup.exe** to begin the installation.

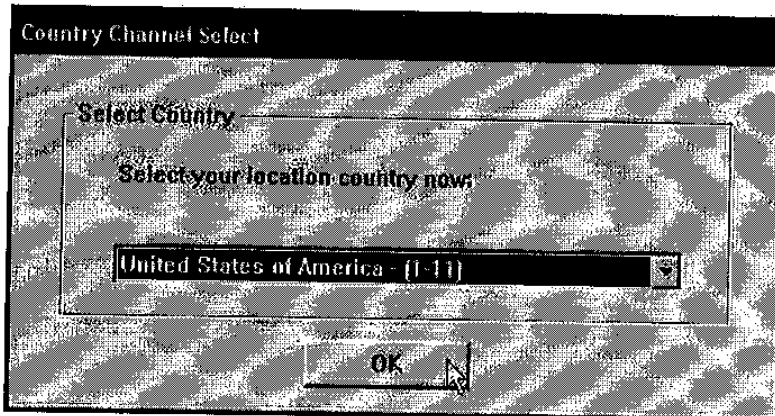


3. **RALINK Wireless Network Card Setup** will install the driver on your system, click **Next** to continue.

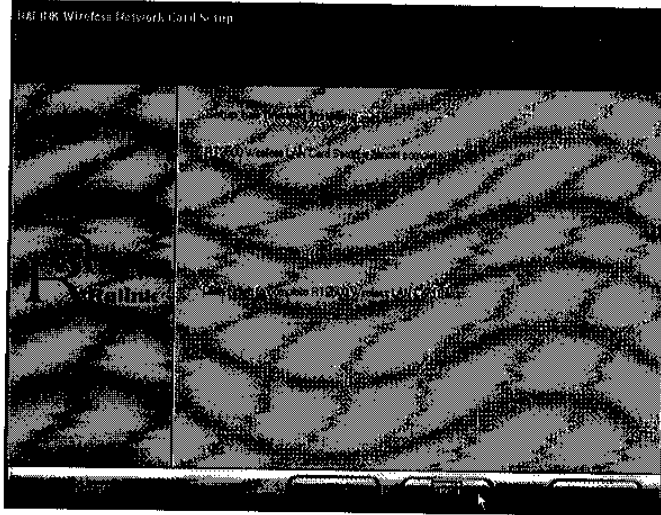




4. Select the Country Channel, and click **Next** to continue.



5. The installation is now complete. Please click **Finish**.

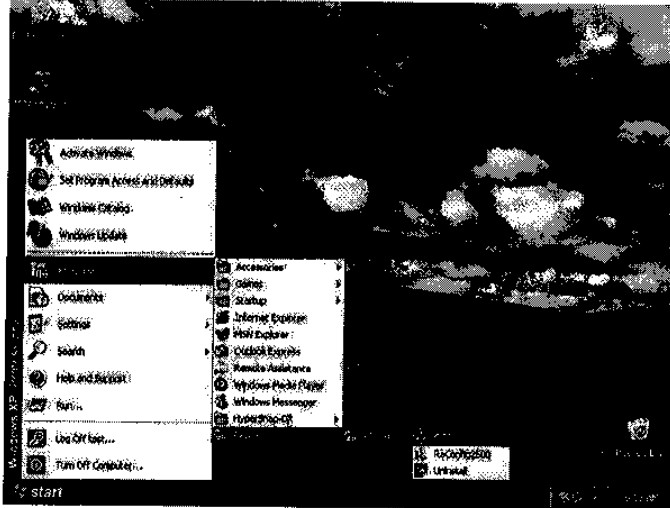


6. When you complete the installation, the utility icon will appear on the system tray. You could double-click it to configure wireless network settings

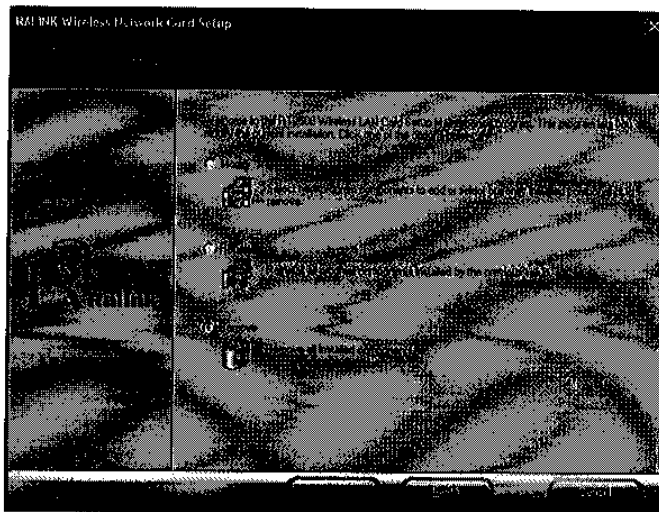


### Uninstalling the Wireless LAN Card

1. For uninstalling the Wireless LAN Card, please go to: **Start** -> **Programs** -> **Realink** -> **RT2500** under Windows environment. Then click **Uninstall**



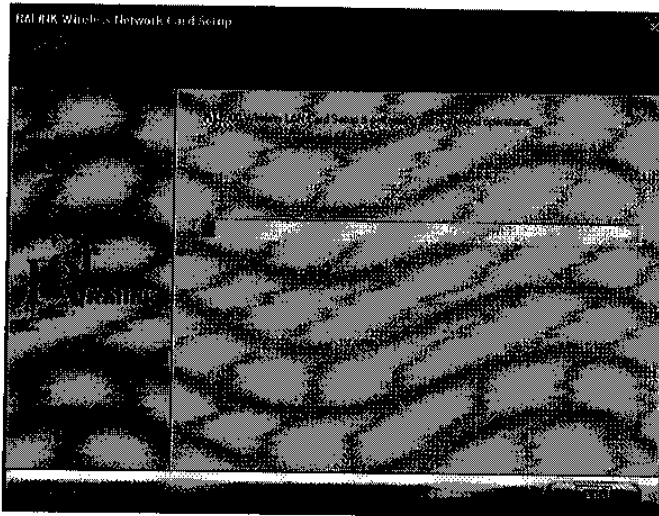
2. Select **Remove** to uninstall the Wireless LAN Card.




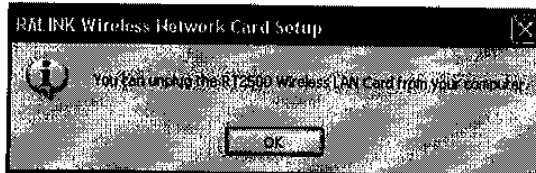
3. The **Confirm Uninstall** screen will display, click  to confirm.




4. Wait for removing the utility.



5. After completing the uninstallation, click .

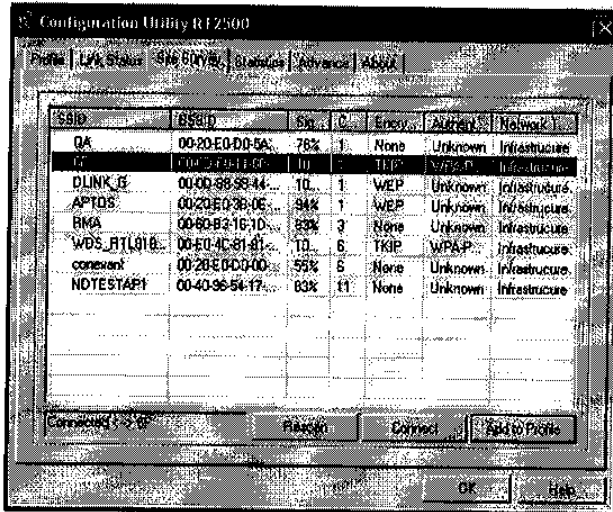


### Configuring the Wireless LAN Card

Double-click the utility icon  in your system tray to begin the utility configuration.

### Connecting to an existing network

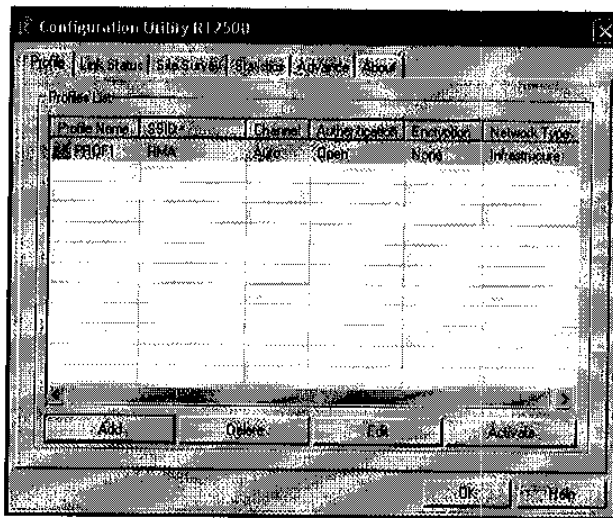
Select **Site Survey** Tab, all available Access Points would be listed. Click on the desired Access Point, and click **Connect** to connect.



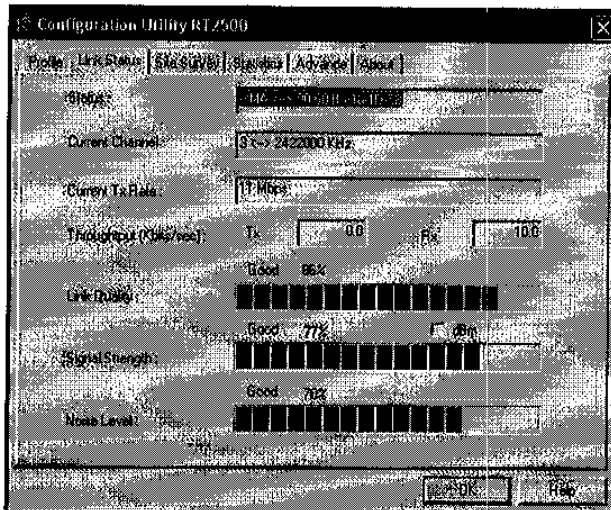
### Configuration

- Profile

The **Profile Tab** allows you to set values for all parameters by selecting a previously defined profile. To create a profile, click **Add**, type a profile name and set the corresponding parameters. If one of the profiles is no longer used, you may remove it by clicking the **Delete** button. After changing parameters, click the **Activate** button to take effect. You can have multiple profiles and modify the profile at any time.



- Link Status





**Status**

The field shows the association status to available Access Point with SSID->MAC address of the Access Point.

**Current Channel**

Shows the channel on which the connection is made.

**Current Tx Rate**

Shows the highest transmit rate of the current association.

**Throughput (Kbits/sec)**

This displays the instantaneous wireless Receive and Transmit throughput in Kbits per second.

**Link Quality / Signal Strength**

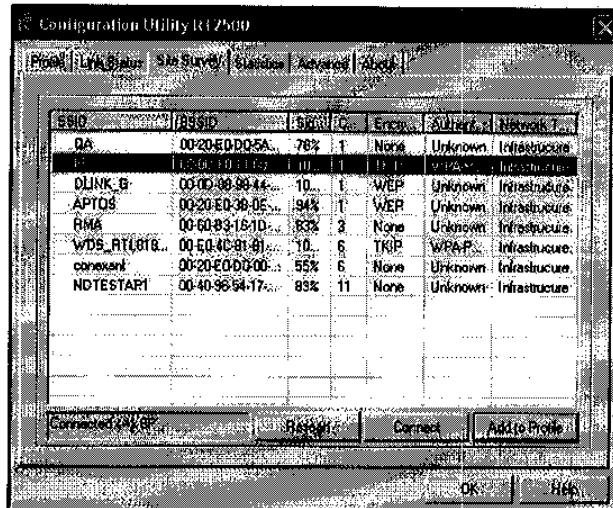
The Link Quality and Signal Strength bar graph is only active when the node is in Infrastructure Mode. The bar graph displays the quality and strength of the link between the node and its Access Point.

- **Site Survey**

**Site Survey** Tab lists the features of the available Access Points within range of the Wireless Adapter's signal.

Click on the desired Access Point, and click **Connect** to connect.

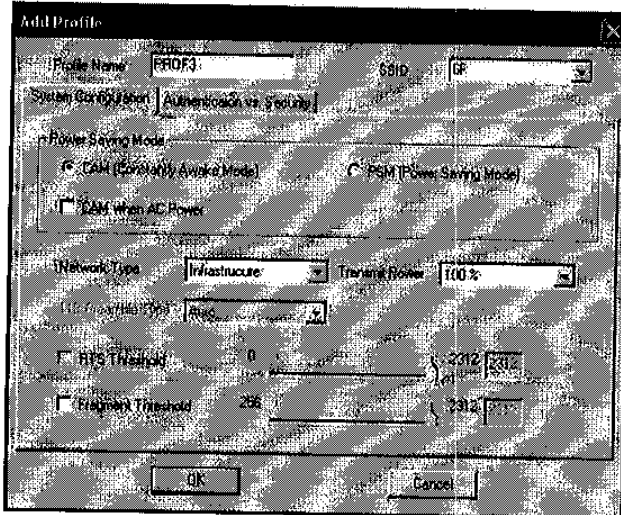
You may click **Rescan** to refresh the list.



**Add to Profile**

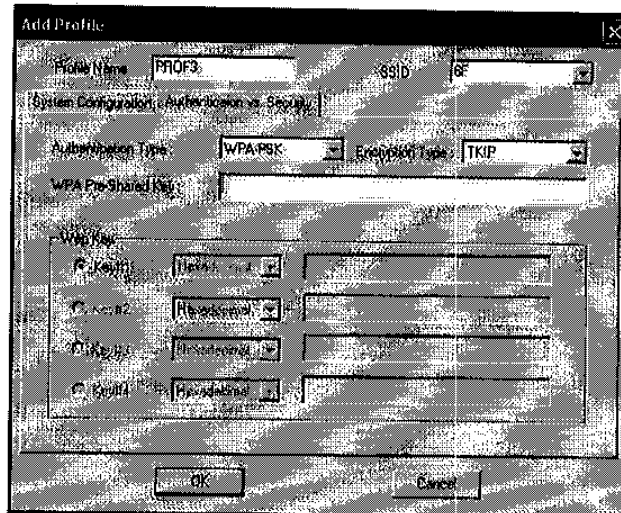
You may select an Access Point, and click **Add to Profile** to include it to Profile List.

Under **Add Profile** screen / **System Configuration** Tab, you may set **Power Saving Mode**, **Network Type**, **Transmit Power**, **RTS Threshold**, and **Fragment Threshold**.

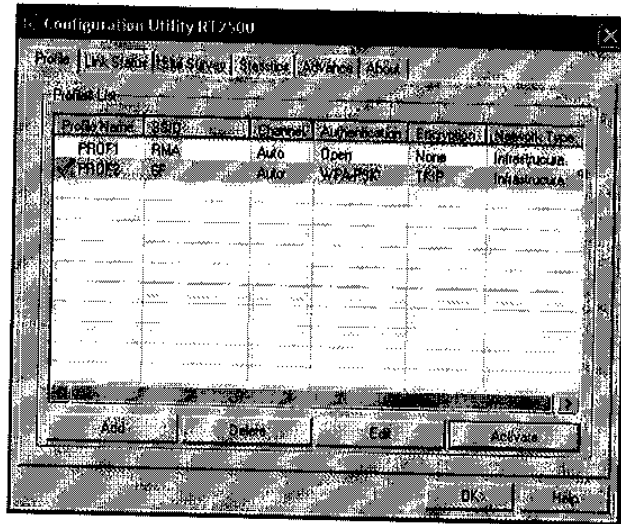


Under **Add Profile** screen / **Authentication vs. Security** Tab, you may set **Authentication Type**, **Encryption Type**, **WPA Pre-Shared Key**, and **Wep Key**. Click **OK** when you have finished the settings.

Or click **Cancel** to abort your new settings for Add to Profile.

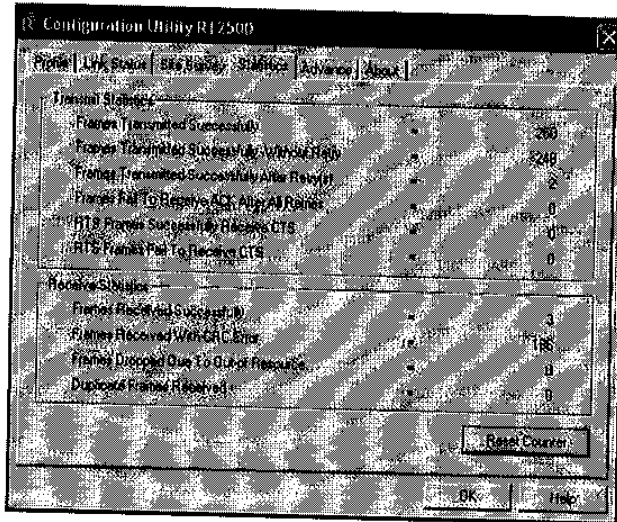


After finishing the Add Profile, Check **Profile** Tab, you may find the new added profile in Profile List.



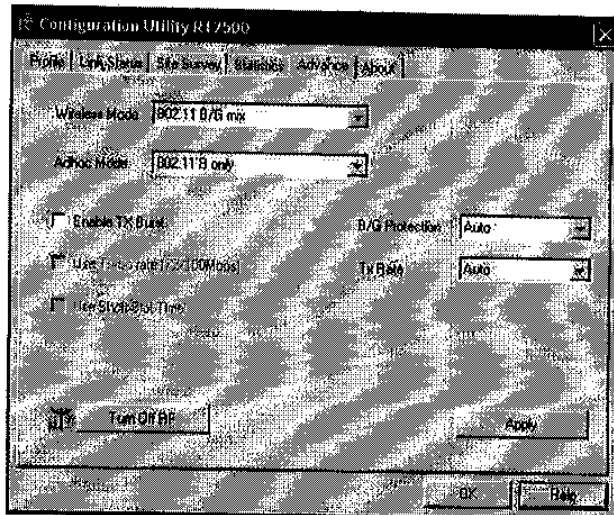
- **Statistics**

The **Statistics** Tab provides information about the Transmit and Receive frames.



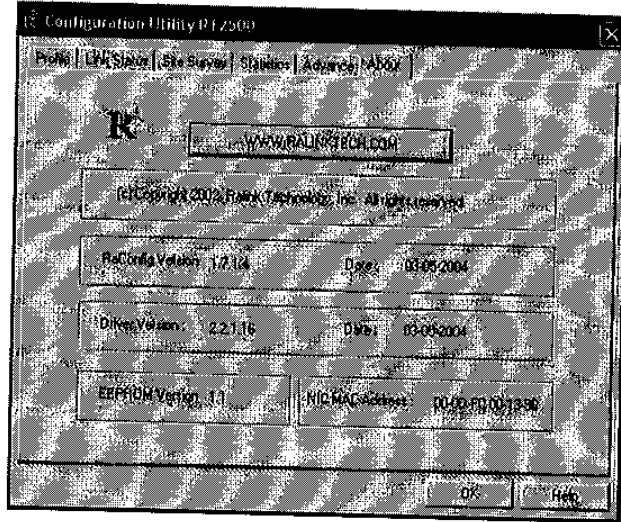
- **Advance**

The Configuration Utility also offers the advanced configuration for user to set the Wireless Adapter under certain network environment. These advanced options include **Wireless Mode**, **Adhoc Mode**, **TX Burst**, **B/G Protection**, **TX Rate**, and **Turn Off RF**.



- About

**About** Tab shows the product version including the detail of Configuration Utility Version, Driver Version, EEPROM Version, and NIC MAC Address.



The antenna(s) used for this transmitter must be installed to provide a separating distance of at least 20 cm from all persons and must not be co-located or operating in conjunction with any other antenna or transmitter.

**NOTE: THE MANUFACTURER IS NOT RESPONSIBLE FOR ANY RADIO OR TV INTERFERENCE CAUSED BY UNAUTHORIZED MODIFICATIONS TO THIS EQUIPMENT. SUCH MODIFICATIONS COULD VOID THE USER'S AUTHORITY TO OPERATE THE EQUIPMENT.**