

Desktop Computer



Preface

©Copyright 2012

All Rights Reserved.

The information in this document is subject to change without prior notice in order to improve reliability, design and function and does not represent a commitment on the part of the manufacturer.

In no event will the manufacturer be liable for direct, indirect, special, incidental, or consequential damages arising out of the use or inability to use the product or documentation, even if advised of the possibility of such damages.

This document contains proprietary information protected by copyright. All rights are reserved. No part of this manual may be reproduced by any mechanical, electronic, or other means in any form without prior written permission of the manufacturer.

Limitation of Liability

While reasonable efforts have been made to ensure the accuracy of this manual, the manufacturer and distributor assume no liability resulting from errors or omissions in this manual, or from the use of the information contained herein.

Conventions of This Manual

Use this manual will help you get the most from your computer.

If you are an experienced user of computers and/or Microsoft's Windows operating systems, you might find it useful to read the Quick Start Guide that comes along with your accessories.

If you are a less experienced user, you should go through the manual carefully before using your system.

Whether or not you are an experienced user, you should consult the Troubleshooting Chapter if you encounter any problems with your computer.

Safety Precautions

This section is designed to assist you in identifying potentially unsafe conditions while working with this product. Required safety features have been installed in the computer to protect you from injury. However, you should use good judgment to identify potential safety hazards:

Please read these safety instructions carefully.

- 1.** Please keep this User's Manual for later reference.
- 2.** Please disconnect this equipment from AC outlet before cleaning. Don't use liquid or sprayed detergent for cleaning. Use moisture sheet or cloth for cleaning.
- 3.** For pluggable equipment, that the socket-outlet shall be installed near the equipment and shall be easily accessible.
- 4.** Please keep this equipment from humidity.
- 5.** Lay this equipment on a reliable surface when installed. A drop or fall could cause injury.
- 6.** Make sure to use the right voltage for the power source when connecting the equipment to the power outlet.
- 7.** Place the power cord in such a way that people can not step on it. Do not place anything on top of the power cord.
- 8.** All cautions and warnings on the equipment should be noted.
- 9.** If the equipment is not used for a long time, disconnect the equipment from the main power outlet to avoid being damaged by transient overvoltage.
- 10.** Never pour any liquid into the opening, this could cause fire or electrical shock.
- 11.** Never open the equipment. For safety reasons, the equipment should only be opened by a qualified service personnel.
- 12.** If on the following situation arises, get the equipment checked by a service personnel:
 - a.** The Power cord or plug is damaged.
 - b.** Liquid has penetrated into the equipment.
 - c.** The equipment has been exposed to moisture.
 - d.** The equipment has not worked well or you cannot get it work according to the user's manual.
 - e.** The equipment has dropped and damaged.
 - f.** If the equipment has obvious signs of breakage.
- 13.** Do not leave this equipment in an environment unconditioned, storage temperature above 60°C (140°F), it may damage the equipment.

-
- 14.** The unit can be operated at an ambient temperature of max. 5°C ~ 35°C.
- 15.** The sound pressure level of the operator's position according to IEC 704-1: 1982 is equal or less than 70 dB(A).
- 16.** Power Cord Requirements
The power cord set used with the AC adaptor must meet the requirements of the country where you use the AC adaptor, whether it is 100-240 Vac. The following information explains the requirements for power cord set selection.
- The cord set must be approved by the country in which it is used.
 - The appliance coupler must have a configuration for mating with a CEE7/EN60320/IEC 320/NEMA/ JIS C 8303 appliance inlet.
- A.** For U.S. and Canada:
- The cord set must be UL Listed and CSA Certified.
 - The minimum specifications for the flexible cord are No. 18 AWG, (2) Type SPT-2, and (3) 2-conductor.
- B.** For Japan:
- All components of the cord set must bear a “PSE” mark and in accordance with the Japanese Dentori Law.
 - The minimum specifications for the flexible cord are .75mm² conductors, (2) Type VCTR or VCTFK, and (3) 2-conductor.
 - The cord set must have minimum rated current capacity of 7 A.
 - The attachment plug must be a two-pole, grounded type with a Japanese Industrial Standard C8303 (15 A, 125 VAC) configuration.
- C.** For Other Countries:
- The cord set fittings must bear the certification mark of the agency responsible for evaluation in a specific country.
 - The flexible cord must be of a HAR (harmonized) type H03VVH2-F.
 - The cord set must have a current capacity of a least 2.5 Amperes and voltage rating of 125 or 250 Vac.

**CAUTION...**

**Model: BR95IIX (X=0~9) IS
designed to use with the following AC adapter model
ONLY 65W ADP:**

- Delta type: ADP 19V65W DELTAADP-65JH AB S1
225RV LV5
 - Lite-On type: ADP 19V65W LITEONPA-1650-65 S1
225RV LV5
- 17.** When using your telephone equipment, basic safety precautions should always be followed to reduce the risk of fire, electric shock and injury to persons. These precautions include the following:
- Do not use this product near water, for example, near a bathtub, washbowl, kitchen sink or laundry tub, in a wet basement or near a swimming pool.
 - Avoid using a telephone (other than a cordless type) during an electrical storm. There may be a remote risk of electric shock from lightning.
 - Do not use the telephone to report a gas leak in the vicinity of the leak.
 - Use only the power cord and batteries indicated in this manual. Do not dispose of batteries in a fire. They may explode. Check with local codes for possible special instructions.
- 18.** Do not use the AC adapter near open water or other liquids. Never spill liquid into the AC adapter.
- 19.** Danger of explosion if battery is incorrectly replaced. Replace only with the same or equivalent type recommended by the manufacturer. Dispose of used batteries according to the manufacturer's instructions. Never remove the battery pack while the power is on as this may result in data loss when the system loses power.
- 20.** The input receptacle is used as the main disconnecting device.

**CAUTION...**

This part is hot. Be careful.

**VORSICHT...**

Diese Flachewird sehr heiss.

When you see this symbol, be careful as this spot may be very hot.

- 21.** Laser Warning: Laser Class I Product Caution - Invisible laser radiation when open avoid exposure to beam.
The optical drive used with this computer is certified as a


Class1 laser device according to the U.S. Department of Health and Human Services (DHHS) Radiation Performance Standard and International Standards IEC 60825-1 (EN60825-1). The device is not considered harmful, but the following precautions are recommended:

- Do not open the unit.
- Avoid direct exposure to the laser beam.
- If the unit requires service, contact an authorized service center.
- Ensure proper use by reading and following the instructions carefully.
- Do not attempt to make any adjustment of the unit.

Class 1 Laser Product

Appareil A Laser De Classe 1

Laserschutzklasse 1 Produkt

 **WARNING....** Do not attempt to disassemble the cabinet containing the laser. The laser beam used in this product is harmful to the eyes. The use of optical instruments, such as magnifying lenses, with this product increase the potential hazard to your eyes. For your safety, have this equipment serviced only by an authorized service provider.

Mesures de sécurité

Cette section a pour but de vous aider à identifier des conditions potentiellement dangereuses d'utilisation de ce matériel. Les dispositifs de sécurité nécessaires ont été installés sur l'ordinateur pour vous protéger contre d'éventuelles blessures. Cependant, vous devez utiliser votre propre discernement pour identifier les dangers possibles:

1. Veuillez lire ces instructions attentivement.
2. Veuillez conserver le présent guide d'utilisation pour référence ultérieure.
3. Veuillez débrancher ce matériel de l'alimentation secteur avant nettoyage. N'utilisez pas de détergent liquide ou vaporisé pour le nettoyage. Utilisez un tissu humidifié.
4. En ce qui concerne le matériel connecté, veillez à ce que la prise d'alimentation soit située à proximité du matériel et facilement accessible.
5. Veuillez conserver ce matériel à l'abri de l'humidité.
6. Installez ce matériel sur une surface stable. Une chute peut

-
- provoquer des blessures.
- 7.** Vérifiez que vous utilisez une tension d'alimentation correcte avant de brancher l'adaptateur secteur.
 - 8.** Placez le cordon d'alimentation de manière à ce que personne ne puisse marcher dessus. Ne placez aucun objet sur le cordon d'alimentation.
 - 9.** Tous les avis et avertissements concernant ce matériel doivent être respectés.
 - 10.** Si le matériel n'est pas utilisé pendant une longue période, débranchez-le de l'alimentation secteur afin d'éviter qu'il puisse être endommagé par d'éventuelles surtensions.
 - 11.** Ne jamais verser de liquide dans les ouvertures, cela pourrait provoquer un incendie ou un choc électrique.
 - 12.** N'ouvrez jamais le boîtier. Pour des raisons de sécurité, le matériel ne doit être ouvert que par un technicien spécialisé.
 - 13.** Si l'une des situations suivantes est rencontrée, faites vérifier le matériel par un technicien de maintenance :
 - Le cordon d'alimentation est endommagé.
 - Du liquide a pénétré dans l'appareil.
 - Le matériel a été exposé à l'humidité.
 - Le matériel ne fonctionne pas correctement, ou vous ne pouvez pas le faire fonctionner comme indiqué dans le guide d'utilisation.
 - Le matériel est tombé et il est abîmé.
 - Le matériel présente des signes évidents de rupture.
 - 14.** Ne laissez pas ce matériel dans un environnement non contrôlé. Des températures de plus de 60° Celsius (140° F) peuvent endommager le matériel.
 - 15.** Le système peut être utilisé dans une température ambiante maximale de 5°C ~ 35°C.
 - 16.** Le niveau sonore au niveau de l'utilisateur, selon les termes de la norme IEC 704-1: 1982 est inférieur ou égal à 70 dB(A).
 - 17.** Conditions nécessaires pour le cordon d'alimentation
Le cordon d'alimentation utilisé avec l'adaptateur secteur doit respecter les conditions fixées pour le pays dans lequel vous utilisez l'adaptateur secteur, qu'il s'agisse d'un courant alternatif 100-240 volts. Vous trouverez ci-dessous les informations concernant les exigences appliquées au jeu de cordon d'alimentation.
 - Le jeu de cordon doit être homologué pour le pays dans lequel il est utilisé.

-
- Le coupleur du matériel doit être compatible avec une prise de type CEE7/EN60320/IEC 320/NEMA/ JIS C 8303.
 - A.** Pour les États-Unis et le Canada :
 - Le jeu de cordon doit être énuméré dans la liste UL et certifié CSA.
 - Les caractéristiques minimales pour le cordon flexible sont No. 18 AWG, (2) Conducteur du type SPT-2, et (3) 2.
 - B.** Pour le Japon :
 - Tous les éléments du jeu de cordon doivent comporter le numéro d'enregistrement selon la loi japonaise Dentori.
 - Les caractéristiques minimales pour le cordon flexible sont des conducteurs de type 0.75mm², (2) Conducteur du type VCTF ou VCTFK, et (3) 2.
 - Le cordon doit avoir une capacité de courant nominal minimum de 7A
 - La fiche de branchement doit être du type deux pôles et mise à la terre avec une configuration de standard industriel japonais C8303 (15A, 125 VAC)
 - C.** Pour les autres pays :
 - Les raccords du jeu de cordon doivent porter la marque de l'agence responsable de l'évaluation dans un pays déterminé.
 - Le cordon flexible doit être de type HAR (harmonisé) H03VVH2-F.
 - Le jeu de cordon doit avoir une capacité d'au moins 2,5 et accepter une tension de 125 ou 250 volts.



ATTENTION... Le modèle BR95IIX (X=0~9) est conçu pour être utilisé uniquement avec le modèle d'adaptateur CA suivant

- Delta type: ADP 19V65W DELTAADP-65JH AB S1 225RV LV5
 - Lite-On type: ADP 19V65W LITEONPA-1650-65 S1 225RV LV5
- 18.** Lors de l'utilisation de votre matériel téléphonique, des mesures de précaution élémentaires doivent être respectées afin de minimiser les risques de feu, de choc électrique et de blessure. Ces mesures sont énumérées ci-dessous :

-
- N'utilisez pas ce matériel à proximité de l'eau, comme par exemple près d'une baignoire, d'un lavabo, d'un bac à laver, dans un sous-sol humide ou près d'une piscine.
 - Évitez d'utiliser le téléphone (autre qu'un téléphone portable) pendant un orage. Il peut exister un risque de choc électrique.
 - N'utilisez pas le téléphone pour signaler une fuite de gaz à proximité de la fuite.
 - Utilisez uniquement le cordon d'alimentation et les batteries spécifiés dans ce manuel. Ne jetez pas les batteries au feu. Elles pourraient exploser. Reportez-vous à la réglementation locale pour d'éventuelles instructions particulières.
- 19.** N'utilisez pas l'adaptateur secteur à proximité d'une étendue d'eau ou d'autre liquide. Ne versez pas de liquide dans l'adaptateur secteur.
- 20.** Avertissement relatif aux produits Laser de classe I : Des radiations invisibles sont émises par le Laser. Evitez de vous exposer à ces radiations lorsque le tiroir est ouvert.
- 21.** Risque d'explosion si la batterie est remplacée d'une manière incorrecte. Remplacez uniquement avec une batterie de même type ou de type équivalent recommandée par le constructeur. Débarrassez-vous des batteries usagées en accord avec les instructions du constructeur. Ne jamais retirer le bloc de batteries lorsque l'alimentation est en marche car cela risque de provoquer une perte de données liée à la perte d'alimentation.

Class 1 Laser Product

Appareil A Laser De Classe 1

Laserschutzklasse 1 Produkt



AVERTISSEMENT.... N'essayez pas de démonter le boîtier contenant le laser. Le rayon laser utilisé dans ce produit est dangereux pour les yeux. L'utilisation d'instruments optiques, tels que des loupes, avec ce produit augmente les dangers potentiels pour vos yeux. Pour votre sécurité, faites réparer cet équipement uniquement par un réparateur agréé.

En cas d'urgence, l'utilisateur arrête le système en débranchant la prise d'alimentation.


Things you must remember before working on your computer

Let your computer acclimate itself

Your computer can easily stand temperature extremes but it doesn't like rapid changes in temperature, like going from the cold outdoors to a warm office.

Rapid changes in temperature can cause water droplets to condense inside your case, threatening to damage the electronic parts inside.

After receiving your computer when it's hot or cold outside, try not to power up the computer immediately, let the computer adjust to the room temperature gradually at least for three to four hours.

 **WARNING....** If your system arrives in cold weather, do not apply power to the computer or monitor until they have been allowed to come to room temperature.

Heat, Cold, Humidity, and Glare

- Find a suitable place for your computer that's not too hot, too cold, too dark, or too bright. Glare can make it hard to read the screen.
- Try to avoid the computer components from being destroyed if it is overheated, so try to allow plenty of room for air to circulate around the case.
- Do not block the ventilation opening.
- Do not place your computer in direct sunlight.

Suitable place to work

Your computer will run well wherever you're comfortable but extreme temperature and humidity can be challenging to your system's parts.

There are some things you can tolerate that the computer can't – things like static electricity, dust, water, steam and oil. In case you decide to pull over for roadside computing, try to choose a clean, comfortable work area for your system.

A lithium-ion battery pack will be available when you are traveling. If you are running your system for the first time on battery power, remove the battery from the package, install it into the system and recharge the battery to fully prepare for service.

Table of Conent

Introduction	12
Working Room Scenario	12
Living Room Scenario	13
Business Trip Scenario	13
Getting Started	18
Help Windows	20
Desktop	20
Recycle Bin	21
Start Button	21
Taskbar	21
Notification	22
Using the Desktop Computer	2
LCD or CRT Monitor Connection	2
Keyboard and Mouse Connection	2
Expanding the System	2
Printer Connection	2
Speaker Connection	2
Card Readers, Memory Cards Connection	2
Internet Connection	5
Running BIOS Setup	7
Main Setup	9
Info Setup	9
Advanced	10
Security	10
TPM	11
Boot Setup	11
Exit Setup	12
Finger Printer	14
Troubleshooting	23
Specification	26
Detailed Specifications	26

Chapitre

7



Introduction

Welcome to the Desktop Computer

This computer is a small compact computer considered as a desktop replacement considered using a bulky size on your table.

The system supports numerous connectors that allows you to connect digital video camera, digital camera, hard disk, and other compatible electronic appliances.

Scenarios in using your Desktop Computer

Working Room Scenario

In using this computer in your own private study room, place it together with LCD monitor, speakers, printer/scanner/fax, or any other peripherals.



Living Room Scenario

In using the Desktop Computer in your own living room, connect it to a speaker, DVD/VCD player, or any other peripherals in building your own media center at home.



Business Trip Scenario

Because of being a handy computer, you can carry the pc with you on your business trip since it can be conveniently keep in a hand bag.

Front Side Features

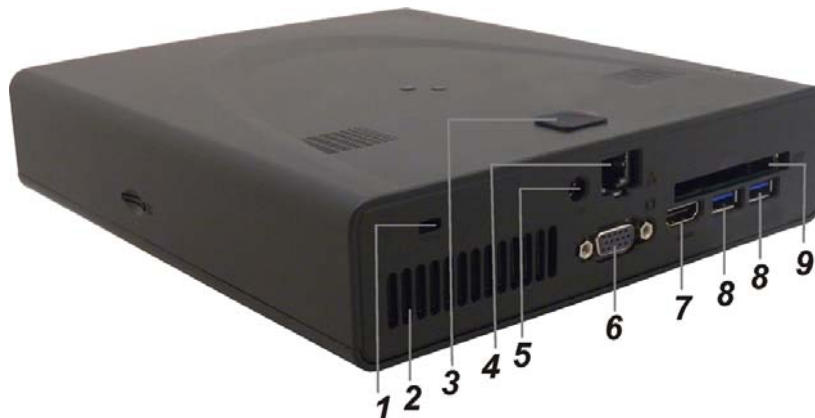


- 1. CardReader (SD/SDHC/SDXC(High speed mode)/MMC/MS/MS-Pro)**



NOTE.... Be sure the face of the card must be facing down when inserting without using the stand or bottom side facing you when inserting using the stand.

Rear Side Features



- 1. Kensington Security Slot**
Attach a Kensington lock to this slot to secure your computer to a fixed location.
- 2. Ventilation Opening**
The ventilation opening allows the computer to cool off and prevent overheating. Do not block this opening when the computer is turned on.
- 3. FingerPrinter**
Fingerprint recognition or fingerprint authentication refers to the automated method to identify individuals and verify their identity.
- 4. LAN Connector**



NOTE.... When using a LAN, please use an EMI Shielding Cable to minimize an interference when transmitting.

- 5. Power Jack (DC-in)**
The DC-out jack of the AC Adapter connects here and power on the computer.
- 6. External Monitor Port**
Use this port to connect to an external monitor.

7. HDMI Port

Compact audio/video interface for transmitting uncompressed digital data.

8. USB 2.0 Ports

This port conforms to the latest USB2.0 plug-and-play standards.

9. ExpressCard Slot

Standard for higher speed PCMCIA form factor cards that supports USB2 and PCI Express.

Top Side Features



1. Power/Suspend Button

Press momentarily to turn on the system.

Press the power/suspend button again to return from the suspend mode.

2. USB 2.0 Port

This port conforms to the latest USB2.0 plug-and-play standards.

3. USB 2.0 Port

This port conforms to the latest USB2.0 plug-and-play standards.

4. Stereo Headphone Jack

Use the headphone jack to connect an external headphone set.

5. Microphone Jack

Use the microphone jack to connect an external microphone.

Chapter

2



Getting Started

Connecting to a Power Source

A universal AC adapter is provided to supply your computer with power. The adapter's AC input voltage can range anywhere from 100 to 240 volts, covering the standard voltages available in almost every country. The power cord for the AC adapter requires a three-hole grounded AC outlet. To connect the computer to an external power source:



⚡ WARNING.... Do not use inferior extension cords as this may result in damage to your computer. The computer comes with its own AC adapter. Do not use a different adapter to power the computer and other electrical devices.

WARNING.... Never turn off or reset or move your computer while the hard disk is in use; doing so can result in loss or destruction of your data. Always wait at least 5 seconds after turning off your computer before turning it back on; turning the power on and off in rapid succession can damage the computer's electrical circuitry.

Powering up the Desktop Computer

At the top of the desktop computer, locate on the power button and press for a few seconds to power up the system. The Power-On Self Test (POST) runs automatically.



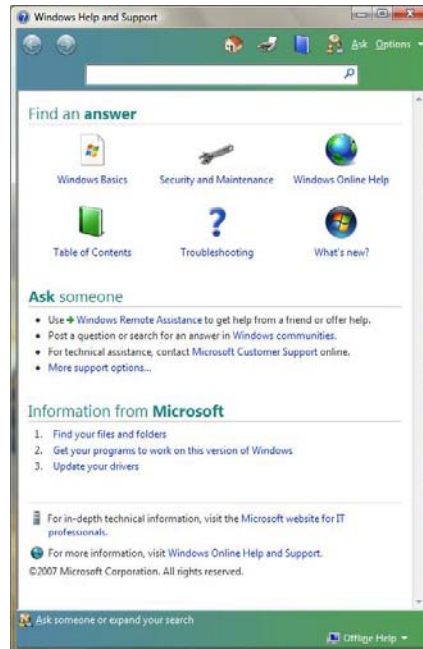
After the POST is completed, the computer reads the operating system from the hard disk drive into computer memory (this is commonly referred to as “booting” a computer). If your OS (Operating System such as Windows 7.... etc) is installed, it should start automatically.

To turn the computer off, save your work and close all open applications, click on **Start**, then **Shut Down** and select **Shut down the computer** and click "**Yes**" or press the power button for 4-6 seconds. (abnormal shutdown)

Using the Windows

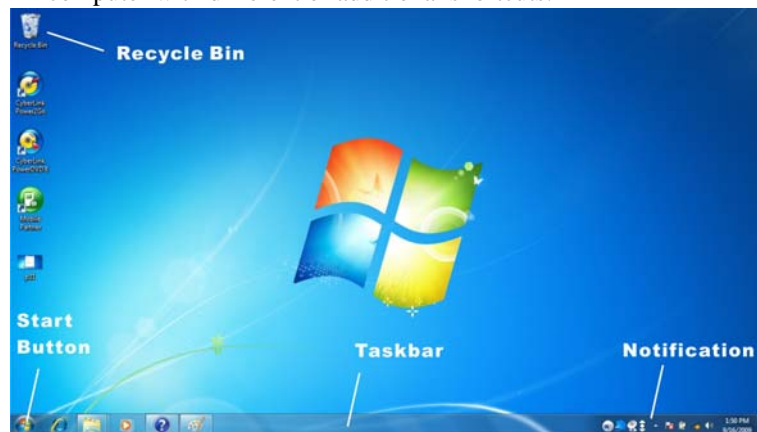
Help Windows

For Windows 7 help, click **Start** → **Help and Support** icon will open the dialog box.



Desktop

Desktop may vary differently on the software installed in your computer with different or additional shortcuts.

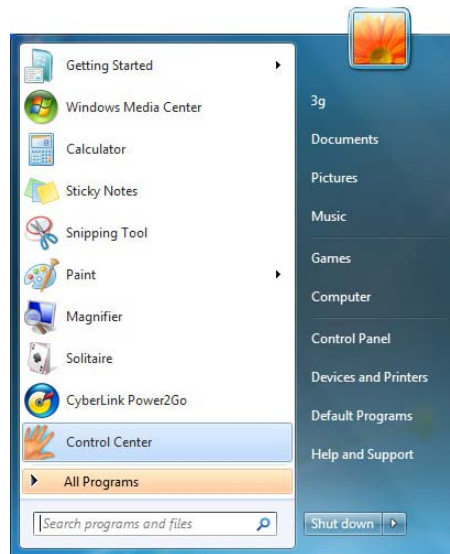


Recycle Bin

Used for storing deleted files in case you want to recover and save it in your system. The files will only be deleted from the Recycle Bin permanently only if you empty it by right clicking your mouse and select the “Empty Recycle Bin”.

Start Button

Allows easy access to all Windows programs.



The **Start** menu allows you to adapt and show the programs used most frequently. If you wish to keep an item, right click the item and click **Pin to Start menu**.

Log Off will enable the current user to log off and allows a new user to log on.

Turn Off Computer allows you to shut down, restart, and Stand by modes for power saving purposes.

Taskbar

When you open a program, its icon is displayed at the taskbar for you to conveniently move between programs by clicking the relevant button.

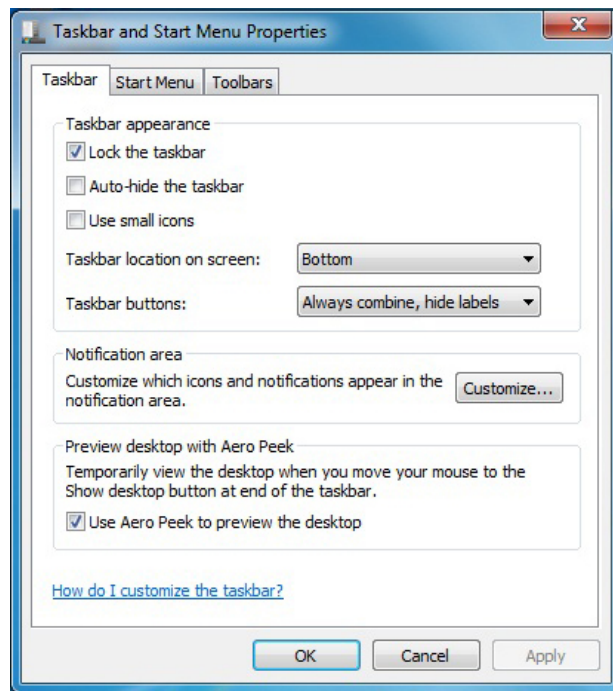
To add or remove toolbars from the taskbar: right click an empty spot on the taskbar, select **Toolbars** → **choose the toolbar you want to**

add.

Notification

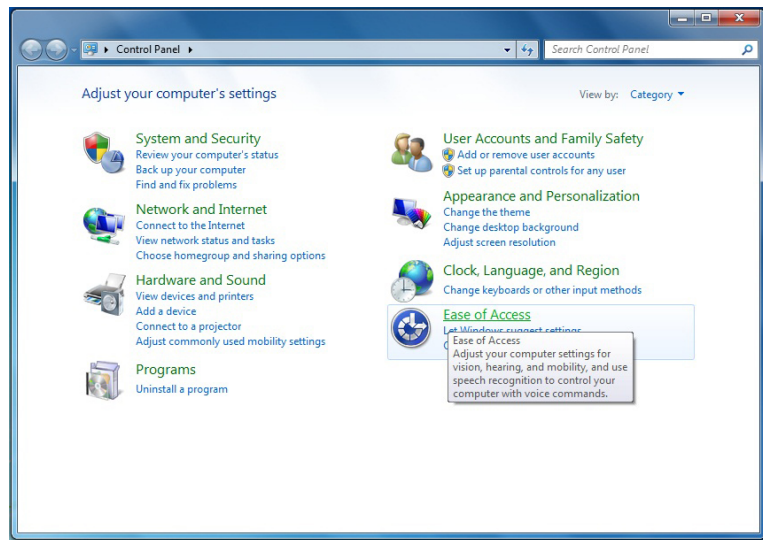
The icons that appear here are for quick access to some programs and computer functions that you frequently used. To prevent Windows 7 from hiding icons:

From an empty spot on the **Taskbar**, right click your mouse and select the **Properties**, remove the checked mark on the **Auto-hide the taskbar**.



Control Panel

It is in this area that you can change how Windows looks and works. Click **Start** → **Control Panel** dialog box. There are two interfaces – **Classic View**.



Chapter

3



Using the Desktop Computer

Connecting Your System

LCD or CRT Monitor Connection

- ▶ You can connect the system to different types of LCD monitor.

Keyboard and Mouse Connection

- ▶ You can connect the keyboard and mouse to the USB connectors.

Expanding the System

- ▶ The system provides you with three USB connectors with one on the front and two at the rear conveniently for you to add some external peripherals.
- ▶ In case you have no additional USB connectors to connect other USB peripherals, try installing an optional “expander” box or an USB hub for system expansion.

Printer Connection

- ▶ You can connect the system to a USB printer.

Speaker Connection

- ▶ The input of the speaker should be connected to the speaker output (earphone) jack.

Card Readers, Memory Cards Connection

- ▶ Through these memory cards, you can copy files from another PC to your system. There are numerous varieties of memory devices that you can use copying files from another PC.



Chapter

4



Internet Connection

Using Wireless LAN Network for Connection to Internet



Chapter

5



Running BIOS Setup


The Setup Utility is a hardware configuration program built into your computer's BIOS (Basic Input/Output System). It runs and maintains a variety of hardware functions. It is menu-driven software, which allows you to easily configure and change the settings.

The BIOS contains manufacturers default settings for the computer's standard operations. However, there are occasions when you may be required to modify the default settings in the BIOS.

The BIOS allows you to set up passwords to limit access to users. This is an important feature because a great deal of vital information is carried within the computer nowadays. Unauthorized access can be prevented. Later in this chapter, you will learn how to use this security feature.

Entering the BIOS Setup Screen

First turn on the power. When the BIOS performs the POST (Power-On Self Test), press DEL key quickly to activate the BIOS Setup Utility.

 **NOTE....** You may need to press DEL key fairly quickly. Once the system begins to load Windows, you may have to retry by cycle-power on again

Leaving the BIOS Setup Screen

When you have finished modifying the BIOS settings, exit the BIOS. It takes a few seconds to record changes in the CMOS.

BIOS Action Keys

Function Key	Command	Description
ESC	Exit	Leaves a sub-menu to return to the previous menu OR exits the BIOS setup while saving changes.
Enter	Go to Sub Screen	Shows the Sub Menu
F1	General Help	Shows the Help Screen
F9	Default	Set as default
F10	Save and Exit	Saves changes and reboots the computer.
<Tab>	Select a field	Selects the next field.
↑	Select an item	Selects the next upper item.
↓	Select an item	Selects the next lower item.
⇒	Select a menu	Selects the right item
⇐	Select a menu	Selects the left item
-	Lower value	Selects the lower value within a field.
+	Higher value	Selects the higher value within a field.

Modifying the BIOS Settings

The BIOS setup main menu is subdivided into sub-menus. Each menu item is described in this section.

Main Setup

Phoenix SecureCore (tm) Setup Utility						
Main	Info	Advanced	Security	TPM State	Boot	Exit
System Time: [23:01:53] System Date: [02/01/2011]					Item Specific Help <Tab>, <Shift-Tab>, or <Enter> selects field.	
SATA Mode [AHCI] ▶ SATA Port 1 [None] ▶ SATA Port 3 [None]						
System Memory: 640 KB Extended Memory: 2048 MB						
F1 Help	↑↓	Select Item	-/+	Change Values	F9	Setup Defaults
Esc Exit	←→	Select Menu	Enter	Select ▶ Sub-Menu	F10	Save and Exit

Info Setup

Phoenix SecureCore (tm) Setup Utility						
Main	Info	Advanced	Security	TPM State	Boot	Exit
BIOS Information BIOS Version : 0.15.00 KBC Version : 0.15						
Processor: CPU Type Genuine Intel ® CPU 0 @ 2.70GHz CPU Speed 2700 MHZ						
Manufacturer: Standard Product Name: BR40I17						
F1 Help	↑↓	Select Item	-/+	Change Values	F9	Setup Defaults
Esc Exit	←→	Select Menu	Enter	Select ▶ Sub-Menu	F10	Save and Exit

Advanced

Phoenix SecureCore (tm) Setup Utility						
Main	Info	Advanced	Security	TPM State	Boot	Exit
No Execute Mode Mem Protection [Enabled]						Item Specific Help
Intel Trusted Execution [Enabled]						When enabled, if OS supports the "No Execute Page Protection" Technology, the OS can set memory pages as not executable.
F1 Help	↑↓	Select Item	-/+	Change Values	F9	Setup Defaults
Esc Exit	←→	Select Menu	Enter	Select ▶ Sub-Menu	F10	Save and Exit

Security

Phoenix SecureCore (tm) Setup Utility						
Main	Info	Advanced	Security	TPM State	Boot	Exit
Supervisor Password Is: Clear						Item Specific Help
User Password Is: Clear						Supervisor Password controls access to the setup utility.
Set Supervisor Password [Enter]						
Set User Password [Enter]						
TPM Support [Enabled]						
F1 Help	↑↓	Select Item	-/+	Change Values	F9	Setup Defaults
Esc Exit	←→	Select Menu	Enter	Select ▶ Sub-Menu	F10	Save and Exit

TPM

Phoenix SecureCore (tm) Setup Utility						
Main	Info	Advanced	Security	TPM State	Boot	Exit
Current TPM State: Enabled and Activated				Item Specific Help		
Change TPM State [No Change]				change TPM State		
				A disabled security chip prevents encrypted data from being used		
				A deactivated security chip prevents a user from taking ownership		
F1 Help	↑↓	Select Item	-/+	Change Values	F9	Setup Defaults
Esc Exit	←→	Select Menu	Enter	Select ▶ Sub-Menu	F10	Save and Exit

Boot Setup

Phoenix SecureCore (tm) Setup Utility						
Main	Info	Advanced	Security	TPM State	Boot	Exit
Boot Priority order:				Item Specific Help		
1: USB Key:				Keys used to view or configure devices:		
2: USB HDD:				Up and Down arrows select a device.		
3: USB FDC:				<+> and <-> moves the device up or down.		
4: IDE CD				<f> and <r> specifies the device fixed or removable.		
5: USB CDROM:				<x> exclude or include the device to boot.		
6: IDE HDD:				<Shift + 1> enables or disables a device.		
7:				<1 - 4> Loads default boot sequence.		
8:						
Excluded from boot order:						
: USB ZIP:						
: USB LS120:						
: PCI SCSI:						
: PCI BEV: Realtek PXE B04 D00						
: Other USB:						
: PCI:						
: Legacy Network Card						
F1 Help	↑↓	Select Item	-/+	Change Values	F9	Setup Defaults
Esc Exit	←→	Select Menu	Enter	Select ▶ Sub-Menu	F10	Save and Exit

Exit Setup

Phoenix SecureCore (tm) Setup Utility						
Main	Info	Advanced	Security	TPM State	Boot	Exit
Exit Saving Changes Exit Discarding Changes Load Setup Defaults Discard Changes Save Changes					Item Specific Help	
					Exit System Setup and save your changes to CMOS.	
F1 Help	↑↓	Select Item	-/+	Change Values	F9	Setup Defaults
Esc Exit	←→	Select Menu	Enter	Select ▶ Sub-Menu	F10	Save and Exit

Chapter

6

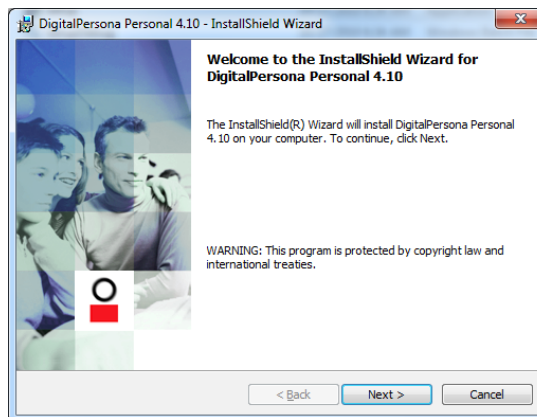
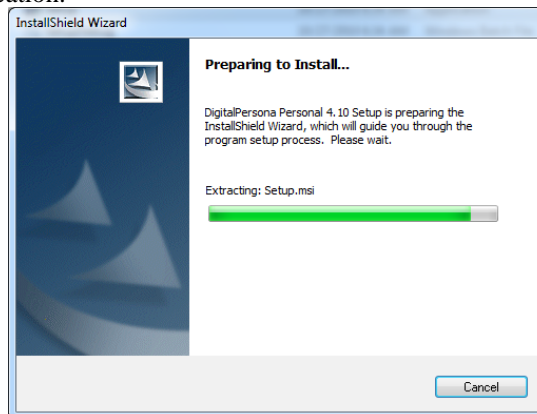


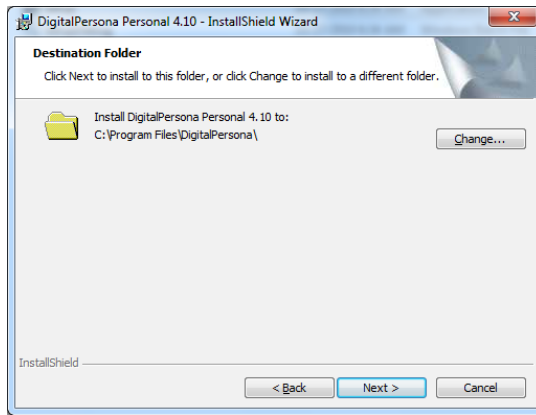
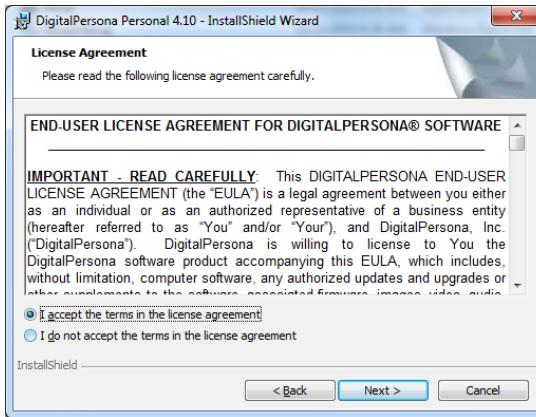
Finger Printer

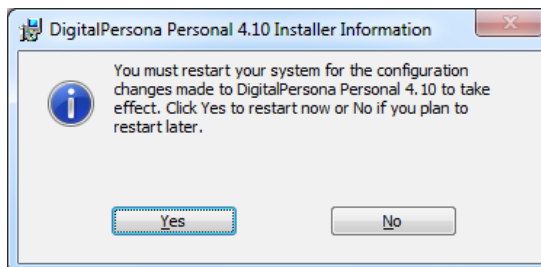
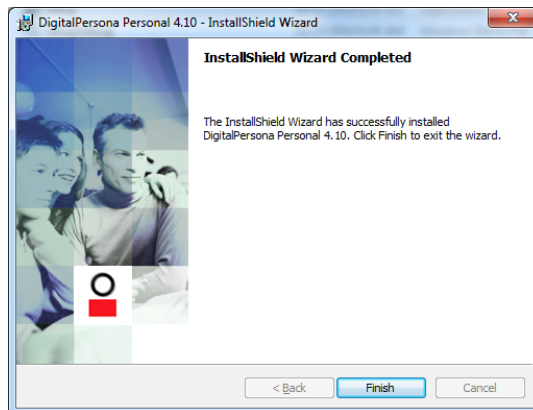
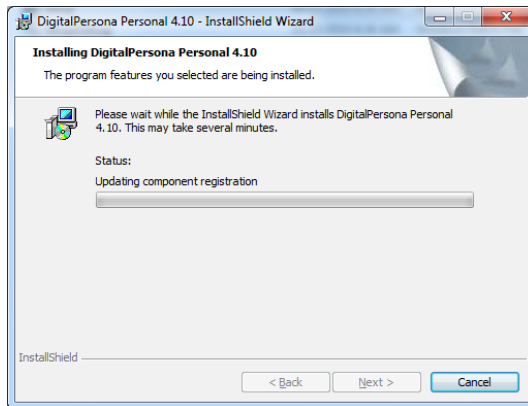
Fingerprint recognition or fingerprint authentication refers to the automated method to identify individuals and verify their identity.

Installation process

Follow the process stated on the display window to start installing the application.

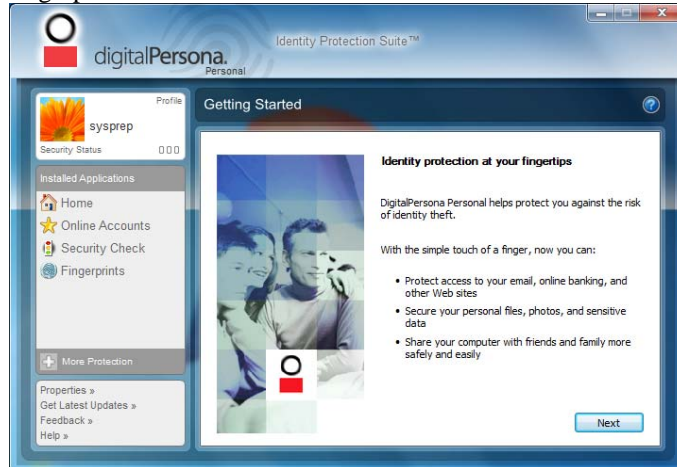


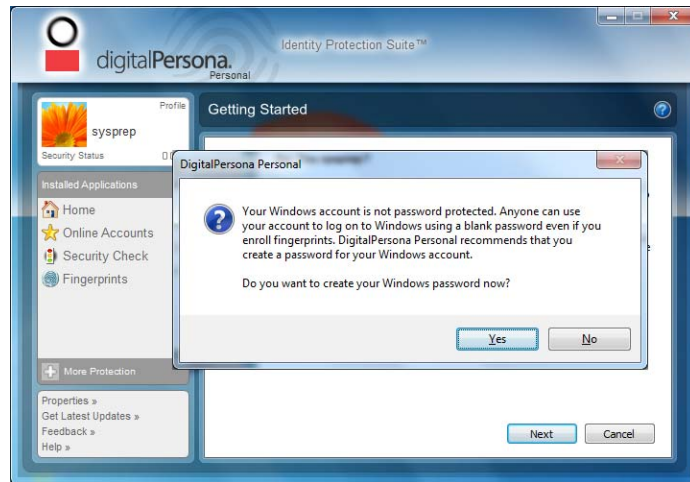




Procedures

Before executing the fingerprinter application, there are some procedures to be made in order to accurately match the human fingerprint of an individual.





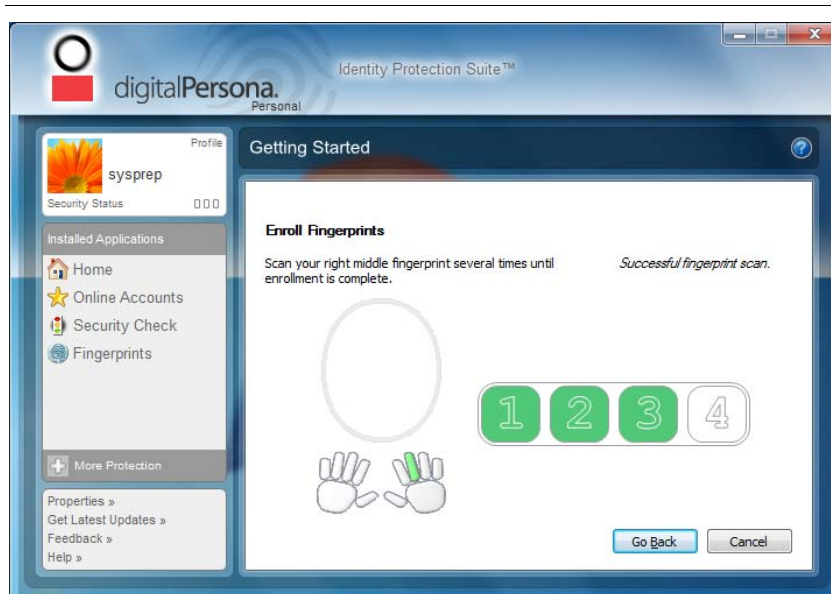
You will be ask to create another password for your windows password.



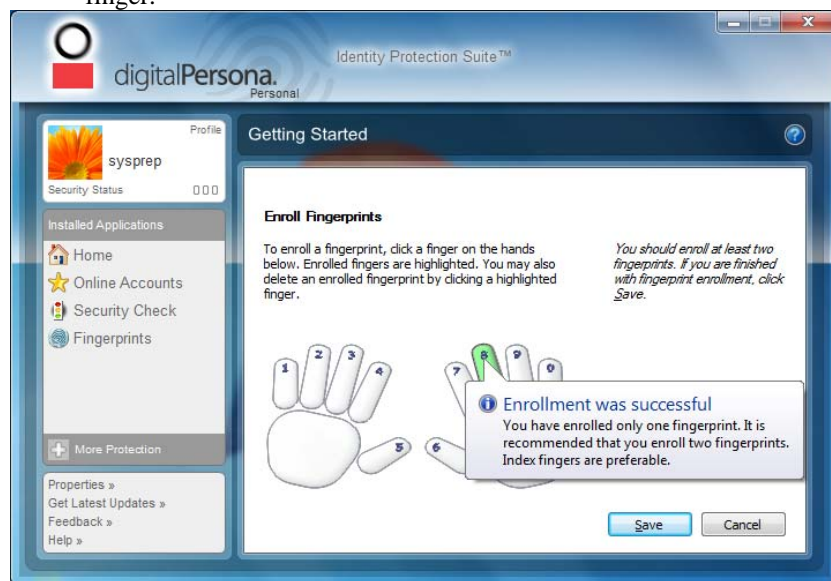


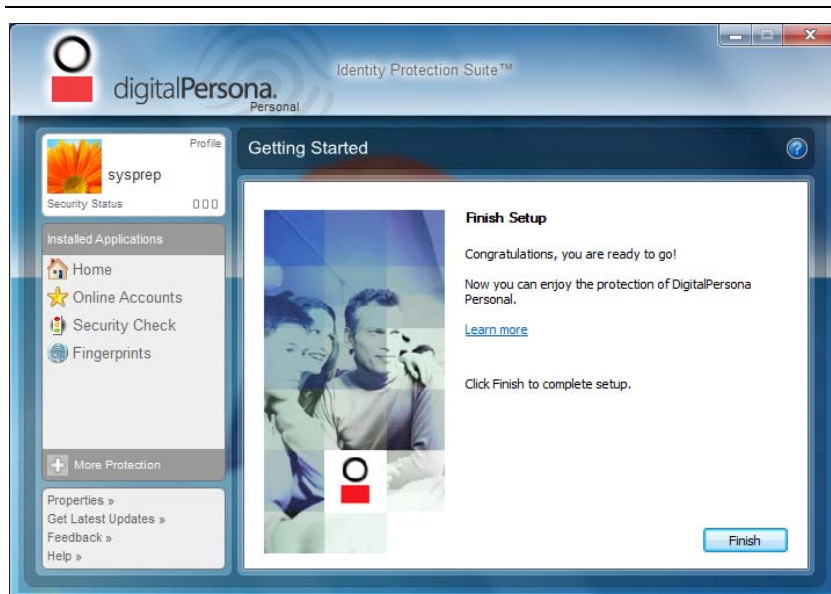
For both hands, select the finger that you would like to be enroll in executing the application.





You will be given several times to completely enroll your middle finger.





Chapter

7



Troubleshooting

Checking Cables and Connections

Start by performing a careful visual inspection of the exterior of the computer. Make sure that your computer and its peripherals are getting power and communicating with each other properly.

To check the power cables, and connections:

1. If you are using the computer with the AC adapter, check the power outlet, the power cord, and any power switches that may affect your computer.
2. Check the wall outlet or power strip with an item that you know is functioning properly. A lamp or radio is a convenient item for checking the power.
3. If the outlet is controlled by a wall switch, make sure that the switch is on.
4. If the outlet is controlled by a dimmer switch, use a different outlet.
5. If your computer is plugged into a power strip with an On/Off switch, make sure the switch is on.
6. With the computer's power switched off, check all cable connections. If the computer is connected to any peripheral devices, look for loose or disconnected cables.

If the computer is too close to a wall, a cable connection may be loose or the cables may be crimped.



NOTE....

Do not substitute cables for different devices (other than the manufacturer recommended cables) even if they look exactly alike. The wiring inside the cable may be different.

-
7. When you are certain that you have power available and all connections are good, turn the computer on again. If the computer still does not start, you may have a hardware problem.

Chapter

A



Specification

Detailed Specifications

Processor

- ▶ Intel Sandy Bridge & Integrated Gfx
 - Intel Turbo Boost Technology, TDP 35W
 - i5-2520M, i5-2540M, i5-2530UM
 - i7-2620M (2.7GHz/ 1core-3.4GHz; 2core-3.1GHz)
- ▶ Intel Turbo Boost Technology, TDP 45W
 - i7-2630M (2.0GHz/ 1core-2.9GHz; 2core-2.8GHz; 3/4core-2.6GHz)

Operating System Compliance

- ▶ Supports Windows 7 Home Premium (32 & 64 bit)

Core Logic

- ▶ Intel Cougar Point

Memory

- ▶ Support DDR3 speed up to 1333 MHz
- ▶ RAM socket * 2
- ▶ Standard system DRAM module 4GB supported
- ▶ System DDR3 up to 8GB (8GB only for 64bits OS)

Wireless LAN

- ▶ Support Half-Mini Card (HMC) type only
- ▶ IEEE 802.11 A/G/N (2x2)
- ▶ PCI-E interface

LAN Controller

- ▶ Supports 10/100/1000Mb/s GigaLAN solution
- ▶ Provide a standard IEEE802.3 Ethernet interface for 1000BASE-T, 100BASE-TX, and 10BASE-T applications (802.3, 802.3u, and 802.3ab)
- ▶ Support IEEE 802.3az

Card reader

- ▶ Support MS, MS PRO, MMC, SD, SDXC, SDHC Memory Card
- ▶ USB2.0 interface

Hard Drive

- ▶ 9.5mm type
- ▶ 160GB/250GB/320/500/640GB
- ▶ SATA interface

Interface Ports

- ▶ 2 x USB 2.0 ports(Front side)
- ▶ 2 x USB 2.0 ports(Back side) or USB3.0(optional)
- ▶ 1 x DC-in Jack
- ▶ 1 x RJ45 Ethernet
- ▶ 1 x CRT (D-Sub)
- ▶ 1 x HDMI V1.4
- ▶ 1 x New Card Slot 54 mm Express card
- ▶ 1 x Kensington lock
- ▶ 1 x Card reader socket
- ▶ 2 x Audio jacks:
 - External microphone in + line in jack 1/8" (TBD)
 - External headphone out jack 1/8" (TBD)

Audio

- ▶ Realtek 269VB6-GR
 - Azalia standard support
 - 2 channels
 - Intel HD Audio D3 Stat

AC Adapter

- ▶ Automatics Voltage adjustment between 100 and 240VAC
50/60Hz, 19 V/65 Watts, 2Pin, Level 5.

Dimension

- ▶ 226.45 x193.5 x 49.5 mm (w/o rubber foot)

Weight

- ▶ System Weight: TBD

EMI

- ▶ FCC

RF

- ▶ FCC ID(Intel 6230 WLAN)

Safety

- ▶ ETL

Others

- ▶ WEEE Compliance (Self-Declaration)
- ▶ RoHS Compliance (Self-Declaration)
- ▶ Energy Star 5.0 (Design ready)
- ▶ EUP LOT6 (Self-Declaration)

Federal Communication Commission Interference Statement

This equipment has been tested and found to comply with the limits for a Class B digital device, pursuant to Part 15 of the FCC Rules. These limits are designed to provide reasonable protection against harmful interference in a residential installation. This equipment generates, uses and can radiate radio frequency energy and, if not installed and used in accordance with the instructions, may cause harmful interference to radio communications. However, there is no guarantee that interference will not occur in a particular installation. If this equipment does cause harmful interference to radio or television reception, which can be determined by turning the equipment off and on, the user is encouraged to try to correct the interference by one of the following measures:

- Reorient or relocate the receiving antenna.
- Increase the separation between the equipment and receiver.
- Connect the equipment into an outlet on a circuit different from that to which the receiver is connected.
- Consult the dealer or an experienced radio/TV technician for help.

FCC Caution: Any changes or modifications not expressly approved by the party responsible for compliance could void the user's authority to operate this equipment.

This device complies with Part 15 of the FCC Rules. Operation is subject to the following two conditions: (1) This device may not cause harmful interference, and (2) this device must accept any interference received, including interference that may cause undesired operation.

This device and its antenna(s) must not be co-located or operating in conjunction with any other antenna or transmitter.

Country Code selection feature to be disabled for products marketed to the US/CANADA

If this device is going to be operated in 5.15 ~ 5.25GHz frequency range, then it is restricted in indoor environment only.

IMPORTANT NOTE:

FCC Radiation Exposure Statement:

This equipment complies with FCC radiation exposure limits set forth for an uncontrolled environment. This equipment should be installed and operated with minimum distance 20cm between the radiator & your body.