

NB
notebook

User's Guide



Preface

©Copyright 2005

All Rights Reserved.

The information in this document is subject to change without prior notice in order to improve reliability, design and function and does not represent a commitment on the part of the manufacturer.

In no event will the manufacturer be liable for direct, indirect, special, incidental, or consequential damages arising out of the use or inability to use the product or documentation, even if advised of the possibility of such damages.

This document contains proprietary information protected by copyright. All rights are reserved. No part of this manual may be reproduced by any mechanical, electronic, or other means in any form without prior written permission of the manufacturer.

Trademarks

AutoCAD and Autosshade are trademarks of Autodesk, Inc. IBM, OS/2, and VGA are trademarks of International Business Machines Corp. Lotus, 1-2-3, and Symphony are trademarks of Lotus Development Corp. Windows, Word, MS-DOS, and Microsoft are trademarks of Microsoft Corp. VESA is a trademark of Video Electronics Standards Association.

Other product names mentioned herein are used for identification purposes only and may be trademarks and/or registered trademarks of their respective companies.

Limitation of Liability

While reasonable efforts have been made to ensure the accuracy of this manual, the manufacturer and distributor assume no liability resulting from errors or omissions in this manual, or from the use of the information contained herein.

Notices

Federal Communications Commission Radio Frequency Interference Statement

NOTE

This equipment has been tested and found to comply with the limits for a Class B digital device, pursuant to Part 15 of the FCC Rules. These limits are designed to provide reasonable protection against harmful interference in a residential installation. This equipment generates, uses, and can radiate radio frequency energy and if not installed and used in accordance with the instruction manual may cause harmful interference to radio communications. However, there is no guarantee that interference will not occur in a particular installation. If this equipment does cause harmful interference to radio or television reception, which can be determined by turning the equipment off and on, the user is encouraged to try to correct the interference by one or more of the following measures:

- Reorient or relocate the receiving antenna
- Increase the separation between the equipment and receiver
- Connect the equipment into an outlet on a circuit different from that to which the receiver is connected
- Consult the dealer or an experienced radio TV technician for help

This device complies with Part 15 of the FCC Rules. Operation is subject to the following two conditions: (1) This device may not cause harmful interference, and (2) this device must accept any interference received, including interference that may cause undesired operation.

FCC Caution: Any changes or modifications not expressly approved by the party responsible for compliance could void the user's authority to operate this equipment.

IMPORTANT NOTE: FCC Radiation Exposure Statement:

This equipment complies with FCC radiation exposure limits set forth for an uncontrolled environment. This equipment should be installed and operated with minimum distance 20cm between the radiator & your body. To maintain compliance with FCC RF exposure compliance requirements, please avoid direct contact to the transmitting antenna during transmitting. If this device is going to be operated in 5.15 ~ 5.25GHz frequency range, then it is restricted in indoor environment only.

This transmitter must not be co-located or operating in conjunction with any other antenna or transmitter.

ECS declares that the G610 (FCC ID: SA6G610IABG) is limited in 2412-2462MHz by specified firmware controlled in the USA.

EC DECLARATION OF CONFORMITY (EUROPE)

Hereby, **Elitegroup**, declares that this product is in compliance with the essential requirements and other relevant provisions of Directive 1999/5/EC as listed below

Article 3.1(a): EN 60950, EN50371

Article 3.1(b): EN 301 489-1, EN 301 489-17

Article 3.2: EN 300 328, EN 301 893



Caution:

This equipment is intended to be used in all EU and EFTA countries. Outdoor use may be restricted to certain frequencies and/or may require a license for operation. Contact local Authority for procedure to follow. Note: Combinations of power levels and antennas resulting in a radiated power level of above 100 mW equivalent isotropic radiated power (EIRP) are considered as not compliant with the above mentioned directive and are not allowed for use within the European community and countries that have adopted the European R&TTE directive 1999/5/EC.

List of national restrictions:

Bulgaria: General authorization required for outdoor use and public service.

France: Outdoor use limited to 10 mW e.i.r.p. within the band 2454-2483.5 MHz.

Italy: If used outside of own premises, general authorization is required .

Luxembourg: General authorization required for public service.

Romania: On a secondary basis. Individual license required. T/R 22-06 not implemented.

EUROPE – RESTRICTIONS FOR USE OF 5GHZ FREQUENCIES IN EUROPEAN COMMUNITY COUNTRIES

Allowed Frequency Bands	Allowed Channel Numbers	Countries
5.15-5.25GHz	36, 40, 44, 48	Austria
5.15-5.35GHz	36, 40, 44, 48, 52, 56, 60, 64	Cyprus, Czech Republic, France, Hungary, Slovakia

5.15-5.35 & 5.470- 5.725GHz	36, 40, 44, 48, 52, 56, 60, 64, 100, 104, 108, 112, 116, 120, 124, 128, 132, 136, 140	Belgium, Bulgaria, Denmark, Estonia, Finland, Germany, Greece, Iceland, Ireland, Italy, Latvia, Liechtenstein, Lithuania, Luxembourg, Malta, Netherlands, Norway, Poland, Portugal, Slovenia, Spain, Sweden, Switzerland, U.K.
-----------------------------------	---------------------------------------------------------------------------------------------------	-----------------------------------------------------------------------------------------------------------------------------------------------------------------------------------------------------------------------------------------------------

- This device may not be operated outdoors when using the bands 5150-5350MHz (Channels 36, 40, 44, 48, 52, 56, 50, 64).
- In Italy the end-user must apply for a license from the national spectrum authority to operate this device outdoors.
- To remain in conformance with European spectrum usage laws for Wireless LAN operation, the above 5GHz channel limitations apply. The user should check the current channel of operation. If operation is occurring outside of the allowable frequencies as listed above, the user must cease operating at that location and consult the local technical support staff responsible for the wireless network.
- The 5GHz Turbo mode feature is not allowed for operation in any European Community country
- This device must not be operated in ad-hoc mode using channels in the 5GHz bands in the European Community. Ad-hoc mode provides a direct communication between two client devices without a Wireless LAN Access Point.
- This device must be used with Access Points that have employed and activated a radar detection feature required for European Community operation in the 5GHz bands. This device will operate under the control of the Access Point in order to avoid operating on a channel occupied by any radar system in the area. The presence of nearby radar operation may result in temporary interruption in communications of this device. The Access Point's radar detection feature will automatically restart operation on a channel free of radar. You may consult with the local technical support staff responsible for the wireless network to ensure the Access Point device(s) are properly configured for European Community operation.

Notice:

Changes or modifications not expressly approved by the party responsible for compliance could void the user's authority to operate the equipment. Shielded interface cables and a non-shielded AC power cord must be used in order to comply with emission limits.

This equipment is to be used with power supply:

I/P: 100-240V AC, 50-60Hz, 1.5A

O/P: 19V DC, 4.74A, 90W

There is no internal power supply.

Table of Content

Before you Start -----	1
Conventions of This Manual	1
Safety Precautions	1
Wichtige Sicherheitshinweise	3
Things you must remember before working on your computer	6
Introduction -----	9
Welcome to the Notebook PC	9
Unpacking the Notebook	9
Getting to Know Your Computer	10
Getting Started -----	19
Connecting to a Power Source	19
Turning On Your Notebook Computer	20
Inserting and Removing the Battery Pack	21
Charging the Battery Pack	22
Using the Notebook Computer -----	23
Adjusting the LCD Screen Display	23
The TouchPad	25
Data Storage and Retrieval	26
PCMCIA Cards and Expansion Sockets	27
Power Saving Modes	27
Resetting the System	30
Using the Windows	30
Desktop Operation -----	35
Audio	35
Connecting Peripheral Devices	36
Internet Connection -----	39
Using Both DHCP and Static IP for Connection to Internet	42
Using Wireless LAN Network for Connection to Internet (Microsoft's Service Pack 2) (Optional)	44
Configuring and Maintaining your System -----	45
Introduction	45
Microsoft Center Edition (MCE) (Option) -----	53
Windows XP Media Center Edition (MCE)	53
MCE Application Sound Adjustment	54
Playing Live TV on an MCE	56

VGA Utilities	59
Intel Graphics.....	59
ATI Graphics.....	67
Viewing Live Video (Option)	75
Using the Remote Control.....	76
WinDVR Mode	76
Application buttons in DVR mode	78
Application buttons in DVD mode	80
Application buttons in Music mode	82
Video Conferencing (Option)	83
Application	83
Troubleshooting	89
Locating a Problem	89
Checking Cables and Connections	89
The Power-On Self Test	90
General Hardware Problems	91
Contacting Your Dealer.....	93
How do I Expand my Notebook	95
Upgrading your Memory	96
Easy to Upgrade HDD Module.....	97
Specification	99
Detailed Notebook Specifications	99

Canadian DOC Notice For Class B Computing Devices

This Class B digital apparatus meets all requirements of the Canadian Interference - Causing Equipment Regulations.

Cet appareil numérique de la classe B respecte toutes les exigences du Règlement sur le matériel brouilleur du Canada.

Personal Inventory

This Notebook computer system is designed for years of productive and pleasurable computing. Use this section to keep notes about details of your purchase. Update this section when you add new options.

Date of Purchase:

Dealer's Name:

Phone:

Address:

E-Mail Address:

WWW Site:

Serial Number:

CPU Type:

Hard Disk Capacity:

Memory Capacity:

Optional Equipment:



BEFORE YOU START

Conventions of This Manual

Use this manual will help you get the most from your notebook computer.

- If you are an experienced user of computers and/or Microsoft's Windows operating systems, you might find it useful to read the Quick Start Guide that comes along with your accessories.
- If you are a less experienced user, you should through the manual carefully before using your system.

Whether or not you are an experienced user, you should consult on the Troubleshooting Chapter if you encounter any problems with your notebook.

Safety Precautions

This section is designed to assist you in identifying potentially unsafe conditions while working with this product. Required safety features have been installed in the computer to protect you from injury. However, you should use good judgment to identify potential safety hazards:

1. Please read these safety instructions carefully.
2. Please keep this User's Manual for later reference.
3. Please disconnect this equipment from AC outlet before cleaning. Don't use liquid or sprayed detergent for cleaning. Use moisture sheet or cloth for cleaning.
4. For pluggable equipment, that the socket-outlet shall be installed near the equipment and shall be easily accessible.
5. Please keep this equipment from humidity.
6. Lay this equipment on a reliable surface when installed. A drop or fall could cause injury.
7. Make sure to use the right voltage for the power source when connecting the equipment to the power outlet.

-
8. Place the power cord in such a way that people can not step on it.
Do not place anything on top of the power cord.
 9. All cautions and warnings on the equipment should be noted.
 10. If the equipment is not use for a long time, disconnect the equipment from the main power outlet to avoid being damaged by transient overvoltage.
 11. Never pour any liquid into the opening, this could cause fire or electrical shock.
 12. Never open the e equipment. For safety reason, the equipment should only be opened by a qualified service personnel.
 13. If on the following situations arises, get the equipment checked by a service personnel:
 - a. The Power cord or plug is damaged.
 - b. Liquid has penetrated into the equipment.
 - c. The equipment has been exposed to moisture.
 - d. The equipment has not worked well or you cannot get it work according to the user's manual.
 - e. The equipment has dropped and damaged.
 - f. If the equipment has obvious sign of breakage.
 14. Do not leave this equipment in an environment unconditioned, storage temperature above 60°C (140°F), it may damage the equipment.
 15. The unit can be operated at an ambient temperature of max. 35°C.
 16. The sound pressure level at the operators position according to IEC 704-1: 1982 is equal or less than 70 dB(A).
 17. Power Cord Requirements
The power cord set used with the AC adaptor must meet the requirements of the country where you use the AC adaptor, whether it is 100-120 or 200-240 Vac. The following information explains the requirements for power cord set selection.
 - The cord set must be approved for the country in which it is used.
 - The appliance coupler must have a configuration for mating with a CEE22/EN6032/IEC 320 appliance inlet.
 - A.** For U.S. and Canada:
 - The cord set must be UL Listed and CSA Certified.
 - The minimum specifications for the flexible cord are No. 18 AWG.
 - B.** For Japan:

-
- All components of the cord set must bear a “PSE” or “T” mark and registration number in accordance with the Japanese Dentori Law.
 - The minimum specifications for the flexible cord are .75mm² conductors.
- C. For Other Countries:**
- The cord set fittings must bear the certification mark of the agency responsible for evaluation in a specific country.
 - The flexible cord must be of a HAR (harmonized) type H05VV-F.
 - The cord set must have a current capacity of at least 2.5 Amperes and voltage rating of 125 or 250 Vac.
- 18.** When using your telephone equipment, basic safety precautions should always be followed to reduce the risk of fire, electric shock and injury to persons. These precautions include the following:
- Do not use this product near water, for example, near a bathtub, washbowl, kitchen sink or laundry tub, in a wet basement or near a swimming pool.
 - Avoid using a telephone (other than a cordless type) during an electrical storm. There may be a remote risk of electric shock from lightning.
 - Do not use the telephone to report a gas leak in the vicinity of the leak.
 - Use only the power cord indicated in this manual.
- 19.** Do not use the AC adapter near open water or other liquids. Never spill liquid into the AC adapter.
- 20.** Laser Warning: Laser Class I Product Caution - Invisible laser radiation when open avoid exposure to beam.
- 21.** Danger of explosion if battery is incorrectly replaced. Replace only with the same or equivalent type recommended by the manufacturer. Dispose of used batteries according to the manufacturer's instructions. Never remove the battery pack while the power is on as this may result in data loss when the system loses power.
- 22.** The input receptacle is used as the main disconnecting device.

Wichtige Sicherheitshinweise

1. Bitte lesen Sie diese Hinweis sorgfältig durch.
2. Heben Sie diese Anleitung für den späteren Gebrauch auf.
3. Vor jedem Reinigen ist das Gerät vom Stromnetz zu trennen. Versenden Sie keine Flüssig- oder Aerosolreiniger. Am besten

-
- eignet sich ein angefeuchtetes Tuch zur Reinigung.
4. Die Netzanschlußsteckdose soll nahe dem Gerät angebracht und leicht zugänglich sein.
 5. Das Gerät ist vor Feuchtigkeit zu schützen.
 6. Bei der Aufstellung des Gerätes ist auf sicheren Stand zu achten. Ein Kippen oder Fallen könnte Beschädigungen hervorrufen.
 7. Beachten Sie beim Anschluß an das Stromnetz die Anschlußwerte.
 8. Verlegen Sie die Netzanschlußleitung so, daß niemand darüber fallen kann. Es sollte auch nichts auf der Leitung abgestellt werden.
 9. Alle Hinweise und Warnungen, die sich am Gerät befinden, sind zu beachten.
 10. Wird das Gerät über einen längeren Zeitraum nicht benutzt, sollten Sie es vom Stromnetz trennen. Somit wird im Falle einer Überspannung eine Beschädigung vermieden.
 11. Durch die Lüftungsöffnungen dürfen niemals Gegenstände oder Flüssigkeiten in das Gerät gelangen. Dies könnte einen Brand bzw. Elektrischen Schlag auslösen.
 12. Öffnen Sie niemals das Gerät. Das Gerät darf aus Gründen der elektrischen Sicherheit nur von autorisiertem Servicepersonal geöffnet werden.
 13. Wenn folgende Situationen auftreten ist das Gerät vom Stromnetz zu trennen und von einer qualifizierten Servicestelle zu Überprüfung.:
 - a. Netzlabel oder Netzstecker sind beschädigt.
 - b. Flüssigkeit ist in das Gerät eingedrungen.
 - c. Das Gerät war Feuchtigkeit ausgesetzt.
 - d. Wenn das Gerät nicht der Bedienungsanleitung entsprechend funktioniert oder Sie mit Hilfe dieser Anleitung keine Verbesserung erzielen.
 - e. Das Gerät ist gefallen und/oder das Gehäuse ist beschädigt.
 - f. Wenn das Gerät deutliche Anzeichen eines Defektes aufweist.
 14. **VORSICHT:** Explosionsgefahr bei unsachgemäßen Austausch der Batterie. Ersatz nur durch denselben oder einem vom Hersteller empfohlenem ähnlichen Typ. Entsorgung gebrauchter Batterien nach Angaben des Herstellers.
 15. Dieses Schaltnetzteil kann bis zu einer Außentemperatur von maximal 35° C.
 16. Die Ausgangswerte dürfen nicht die auf dem Label angegebenen Werte überschreiten.
 17. Anforderungen an das Stromkabel
Das Kabel-Set, das an das Netzteil angeschlossen wird, muss den

Anforderungen des Landes, in dem Sie das Netzteil einsetzen, genügen, je nachdem, ob die Netzspannung 100-120 oder 200-240V Wechselspannung beträgt.

- Das Kabel-Set muss für das Land, in dem es eingesetzt wird, zugelassen sein.
- Der Gerätestecker des Kabels muss in eine CEE22/ EN603/ IEC 320 Buchse passen.

A. Für die USA und Kanada:

- Das Kabel-Set muss UL-gelistet und CSA zertifiziert sein.
- Die Minimalanforderungen für das Kabel entsprechen No. 18 AWG.

B. Für Japan:

- Alle Teile des Kabel-Sets müssen entsprechend dem japanischen Dentori Law mit einem „PSE“ or „T“-Symbol markiert sein
- Die Minimalanforderungen für das Kabel sind .75m² Leiter.

C. Für andere Länder:

- Die Zubehörteile des Kabel-Sets müssen das Prüfsiegel derjenigen Stelle, die in dem jeweiligen Land für die Sicherheitsprüfung zuständig ist, tragen.
- Das Kabel muss vom HAR (harmonisierten) Typ H05VV-F sein.
- Das Kabel-Set muss eine Stromkapazität von mindestens 2,5 Ampere haben und Spannungen von 125 oder 250 V Wechselstrom gestatten.

18. Bei der Benutzung Ihres Telefongerätes sollten Sie immer die grundlegenden Sicherheitsmaßnahmen beachten, um das Risiko von Feuer, Stromschlägen und Verletzungen zu minimieren. Zu beachten sind u.a. folgende Punkte:

- Benutzen Sie das Gerät nicht in der Nähe von Wasser, wie zum Beispiel Badewanne, Waschbecken, Spülbecken, Waschbottich, in feuchten Kellerräumen oder in der Nähe von Schwimmbecken.
- Benutzen Sie kein Telefon (ausgenommen schnurlose Modelle) während eines Gewitters. Es besteht das geringe Restrisiko eines Blitzschlages.
- Benutzen Sie das Telefon nicht um ein Gasleck zu melden, falls es sich in der Nähe des Lecks befindet.

-
- Benutzen Sie nur solch ein Stromkabel, wie in dieser Anleitung beschrieben.
19. Benutzen Sie das Netzteil nicht in unmittelbarer Nähe zu Wasser oder anderen Flüssigkeiten. Gießen Sie nie Flüssigkeiten über das Netzteil.
 20. Achtung Laser: Laser Produkt der Klasse I. Achtung - Unsichtbarer Laserstrahl, vermeiden Sie Kontakt mit dem Strahl bei offenem Gehäuse.
 21. Es besteht Explosionsgefahr, wenn der Akku nicht ordnungsgemäß ersetzt wird. Ersetzen Sie den Akku nur durch einen Akku gleichen oder äquivalenten Typs, der vom Hersteller empfohlen wird. Entsorgen Sie Akkus entsprechend den Anweisungen des Herstellers. Entfernen Sie den Akku auf keinen Fall bei eingeschaltetem Notebook, da hierdurch Daten verloren gehen könnten.
 22. Der Netzeingabeanschluss dient als Hauptschalter des Geräts.

Things you must remember before working on your computer

Let your computer acclimate itself

Your notebook can easily stand temperature extremes but it doesn't like rapid changes in temperature, like going from the cold outdoors to a warm office. Rapid changes in temperature can cause water droplets to condense inside your case, threatening to damage the electronic parts inside.

After receiving your notebook when it's hot or cold outside, try not to power up the computer immediately, let the computer adjust to the room temperature gradually at least for three to four hours.



If your system arrives in cold weather, do not apply power to the computer or monitor until they have been allowed to come to room temperature.

Heat, Cold, Humidity, and Glare

Find a suitable place for your computer that's not too hot, too cold, too dark, or too bright. Glare can make it hard to read the screen.

-
- Try to avoid the computer components from being destroyed if it is over heated, so try to allow plenty of room for air to circulate around the case.
 - Do not block the ventilation opening.
 - Do not place your computer in direct sunlight.

Suitable place to work

Your computer will run well wherever you're comfortable but extremes of temperature and humidity can be challenging to your system's parts. There are some things you can tolerate that the computer can't – things like static electricity, dust, water, steam and oil. In case you decide to pull over for roadside computing, try to choose a clean, comfortable work area for your system.

A lithium-ion battery pack will be available when you are traveling. If you are running your system for the first time on battery power, remove the battery from the package, install it into the system and recharge the battery to fully prepare for service.

INTRODUCTION

Welcome to the Notebook PC

Congratulations on your purchase of the Notebook PC. Your Notebook features the latest advances in portable computing technology. The Notebook's modular design provides maximum expandability without compromising portability. The high-performance CPU and enhanced IDE hard drive provides you with extra processing power for handling complex graphics and running large programs.

A premium notebook designed for successful executives who demand the very best and featuring ultimate power, ultimate wide screen display, ultimate AV capabilities and ultimate connectivity. A Media solution is a combination of Windows XP software augmented by InterVideo WinCinema – including WinDVR for watching television, WinDVD for viewing movies and WinRIP for playing music.

Unpacking the Notebook

The Notebook comes securely packaged in a sturdy cardboard shipping carton. Upon receiving your Notebook, open the carton and carefully remove the contents. If anything is missing or damaged, please contact your Notebook dealer immediately. The shipping carton should contain the following items:

- The Notebook computer
- An AC adapter
- An AC power cord
- Software Drivers CD

Do not throw the packaging materials away. You may need them later if you have to ship the computer for repairs.

note...



Because the Notebook computer is available in different configurations, some of the features mentioned in this manual might not be included on your computer or may differ slightly.

Getting to Know Your Computer

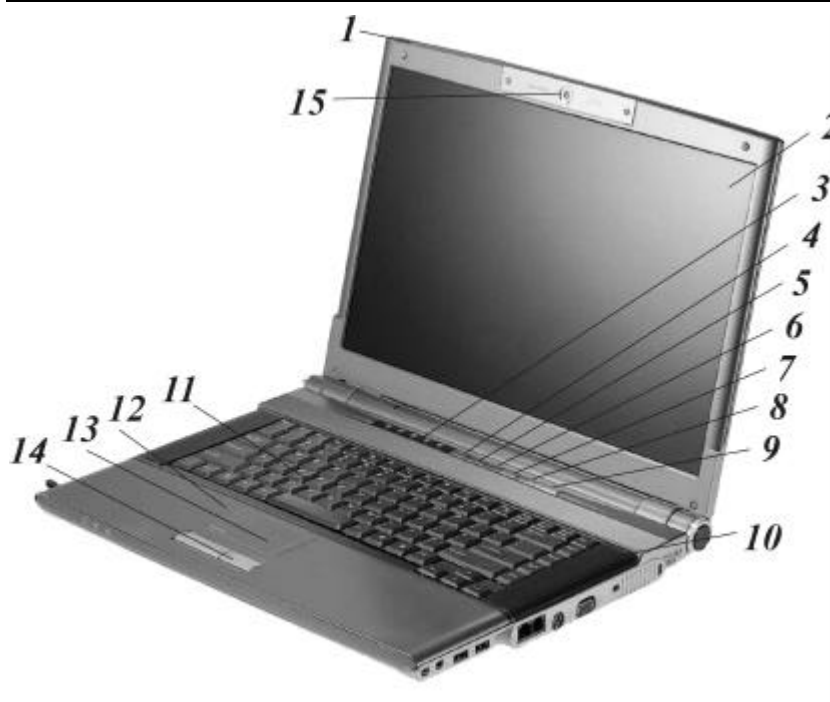
Opening the LCD Panel



To avoid damage to the display panel:

1. Try not to slam the display upon closing it.
2. Try not to place any object on top when it is closed or open.
3. Be sure the system is turned off or in suspend mode before you close the display panel.

With the LCD screen open, you will see several features important for operating your Notebook computer. Each of these features is briefly described below:



1. *Light-To-Voltage Converter Module*

note...



This computer provides a Light-to-voltage converter module which is a sensor directly proportional to the light intensity of your surrounding working environment. This will affect the backlight intensity (bright/dark) of your screen display.

Controlling the backlight intensity manually

Use the hot-key combination of **Fn+F7** and **Fn+F8** respectively to decrease/increase the brightness of your LCD display. The Light-to-voltage converter module function will be terminated immediately after you implement these two manual adjustments of your computer backlight intensity.

Controlling the backlight intensity using the Light-To-Voltage Converter Module

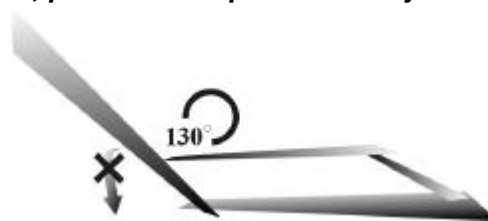
To control the backlight intensity of your notebook using this function, shut down and start your computer to implement this function as default value in determining the backlight intensity of your surrounding working environment.

2. LCD Display



WARNING

This LCD panel can only support up to a maximum opening of 130 degrees, please do not push it forcibly.



3. System Status Indicator Panel



CardReader access



Hard Disk access



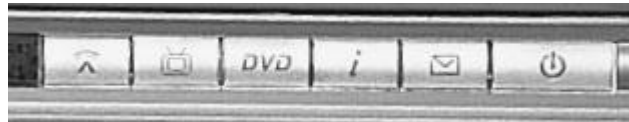
NumLock mode



CapsLock mode



ScrollLock mode



4. Wireless LAN Switch Button

5. TV Button (Launch the WinDVR application)

6. DVD Button (Launch the WinDVD application)

7. Internet Explorer Button

8. Outlook Express Button

9. Power/Resume Button

10. Stereo Speakers

11. Keyboard

12. The Built-in Microphone

-
- 13. TouchPad
 - 14. TouchPad Buttons
 - 15. CMOS Camera (Option)

The Front Side

LED Indicators



- 1. **Power On**
This LED will light when the system is power on.
- 2. **Suspend**
This LED will light when the system is in suspend mode.
- 3. **Battery Charge**
This LED will light when the battery is in charging mode.

The Left Side



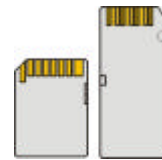
1. DC IN Connector
2. The CD-ROM/DVD-ROM or DVD CD-RW Combo
3. PCMCIA
4. CardReader

note...



Be sure the face of the card must be facing down when inserting it to the cardreader slot.

5. PCMCIA Eject Button
6. 1394 Port



The Right Side



1. Kensington Lock
2. Ventilation Opening
3. MCE Port
4. External CRT Port
5. S-Video Port
6. Modem Port

note...



Always disconnect all telephone lines from the wall outlet before servicing or disassembling this equipment. To reduce the risk of fire use only No. 26 AWG or larger telecommunication line cord.

7. LAN Port

note...



When using a LAN, please use an EMI Shielding Cable to minimize an interference when transmitting.

8. USB Ports

9. Audio Line Out Jack

10. External Microphone Jack

The Rear



1. Cable TV Input

note...



Before connecting the cable into the connector, be sure to remove first the cover on the cable TV connector at the rear of the computer with the aid of a screw driver. One more thing that you need to be aware of is to know the video standard being used in your country that you are viewing. This system supports 3 video standard namely: NTSC, PAL and SECAM. For detailed information on the proper connection of the cable TV, please refer to Chapter 9 on "Viewing Live Video".

2. USB Ports

The Bottom Panel



1. Expansion Compartment
2. Hard Disk



This model offers you with a “Free-Fall Detection” function and system alarm from excessive shock to decrease errors from process variation and environmental stress.

-
3. *Optical Drive*
 4. *CPU Compartment*
 5. *Battery Release Latch*
 6. *Battery Lock*
 7. *Battery*



GETTING STARTED

Connecting to a Power Source

Connecting the AC Adapter

A universal AC adapter is provided to supply your computer with power and also charge the computer's battery pack. The adapter's AC input voltage can range anywhere from 100 to 240 volts, covering the standard voltages available in almost every country.

The power cord for the AC adapter requires a three-hole grounded AC outlet. To connect the computer to an external power source:

1. Plug the AC adapter's connector into the DC-IN connector at the left side of the computer.
2. Connect the power cord to the AC adapter and then to a wall outlet.



WARNING

Do not use inferior extension cords as this may result in damage to your Notebook. The Notebook comes with its own AC adapter. Do not use a different adapter to power the computer and other electrical devices.

Whenever possible, keep the AC adapter plugged into the Notebook and an electrical outlet to recharge the battery.



Never turn off or reset your Notebook while the hard disk is in use and the HDD status icon is lit; doing so can result in loss or destruction of your data. Always wait at least 5 seconds after turning off your Notebook before turning it back on; turning the power on and off in rapid succession can damage the Notebook's electrical circuitry.

Turning On Your Notebook Computer

Turn on your Notebook by pressing the power button. Hold the button down for a 1 or 2 second and release. The Power-On Self Test (POST) runs automatically.

After the POST is completed, the computer reads the operating system from the hard disk drive into computer memory (this is commonly referred to as “booting” a computer). If your OS (Operating System such as Windows XP etc) is installed, it should start automatically.

To turn the Notebook off, save your work and close all open applications, click on Start, then select the “Turn off the computer”. A selection box will be displayed and click on the “Turn Off” button to shut down your computer.



When your computer hangs up, press the power button for 4-6 seconds to shut down the computer.

Operating on Battery Power

Your computer comes with a rechargeable battery pack that lets you operate the computer without an external power source. When the battery pack is fully charged, you can operate the computer for approximately 2 hours under the following conditions:

- The battery pack initially has a full charge.
- No peripheral devices are installed.
- The disk/DVD-ROM drives run no more than 10% of the time.

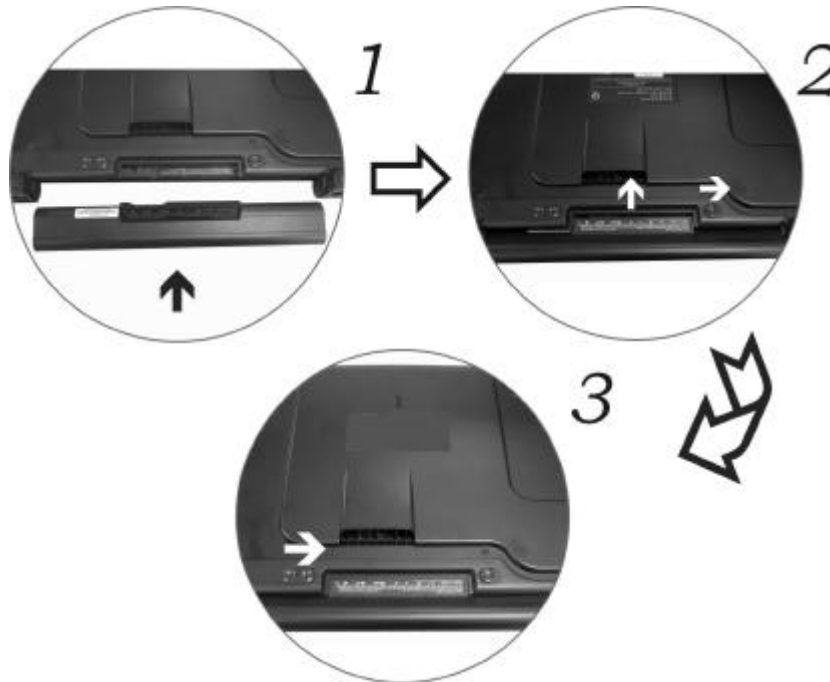


Only use batteries that are approved by an authorized dealer for this model only. All batteries are not the

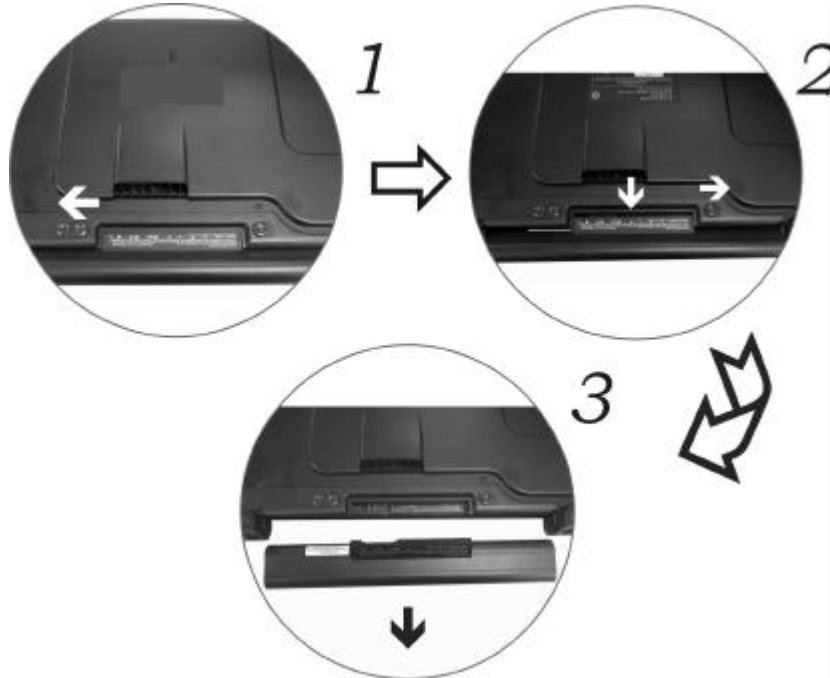
same and therefore should not be treated as such. Using the wrong battery could cause serious damage to your computer and yourself through toxic emissions.

Inserting and Removing the Battery Pack

The battery pack should already be inserted in your Notebook computer when you unpack it. If not inserted, follow these directions:



To remove the battery pack:



Charging the Battery Pack

The installed battery pack charges automatically any time the computer is connected to the AC adapter and an external power source.

If this is your first time to use the battery, be sure to fully discharge the battery and recharged until it is fully charged.

USING THE NOTEBOOK COMPUTER

Adjusting the LCD Screen Display

The LCD screen display can be adjusted by the following key combinations.

KEYS	FUNCTIONS
[Fn] + [F7]	Decreases the brightness level.
[Fn] + [F8]	Increases the brightness level.
[Fn] + [F10]	Use this key combination to expand your video screen or toggle to its original size.
[Fn] + [F12]	This key combination toggles the display between the LCD, CRT, simultaneous LCD/CRT.

LCD Care

LCD screens are delicate devices that need careful handling. Please pay attention to the following precautions:

- When you are not using the computer, keep the LCD screen closed to protect it from dust.
- If you need to clean your LCD screen, use a soft tissue to gently wipe the LCD surface.
- Do not put your fingers or sharp objects directly on the surface and never spray cleaner directly onto the display.
- Do not press on, or store any objects on the cover when it is closed. Doing so may cause the LCD to break.

External CRT Display

You can hook up an external monitor through the 15-pin CRT connector.

- LCD only
- CRT only
- Simultaneous display of the LCD screen and CRT monitor

You can switch between these display configurations by pressing the key combination [Fn] + [F12]. For information on connecting an external display, please refer to Chapter Four.

A Tour of the Notebook's Keyboard

The Notebook's keyboard uses a standard QWERTY layout with the addition of special function keys and an embedded numeric keypad for number intensive data entry. Your keyboard supports Windows by incorporating the two Windows specific keys.

With the two Windows keys you will be able to access and take advantage of many of the timesaving features of Windows software. The function keys (F1-F12) on the top row of the keyboard, serve different purposes and carry out different tasks depending on the application you are running.

The cursor (arrow) keys (which are all located in the lower right corner of your keyboard) and the [PgUp], [PgDn], [Home] and [End] keys (which are located along the right edge of the keyboard) allow you to move the active cursor of the computer to various locations on the screen or within the document.

The embedded numeric keypad consists of 15 keys that make number intensive input more convenient. Like the [Num Lock] key, these keys are labeled in blue on the keycaps. Numeric assignments are located at the upper right of each key.

When the numeric keypad is engaged, the NumLock icon will appear in the System Window. The keypad is activated by pressing the [Fn] + [NumLk] key. If an external keyboard is connected, pressing the NumLock key on either the Notebook or external keyboard will enable/disable NumLock of both keyboards in unison.

To disable the Notebook numeric keypad while keeping the keypad on an external keyboard activated, use the [Fn] + [NumLk] hot key on the Notebook keyboard.

The Notebook's Hot Key Controls

KEYS	FUNCTION(S)
Power Button	Press this button once to power on or enter the suspend/resume mode. Press this button for more than 4 seconds to power off the system.
[Fn] + [F2]	This key combination turns on/off the volume.
[Fn] + [F3]	Decreases the speaker volume.

KEYS	FUNCTION(S)
[Fn] + [F4]	Increases the speaker volume.
[Fn] + [F5]	Enable/disable Touch pad
[Fn] + [F7]	Decreases the brightness level.
[Fn] + [F8]	Increases the brightness level.
[Fn] + [F10]	Use this key combination to expand your video screen or reset to its original size.
[Fn] + [F12]	This key combination toggles the display between the LCD, CRT, simultaneous LCD/CRT.

Launch Button

KEYS	FUNCTION(S)
Wireless Button	Press this button to On/Off wireless function.
TV Button	Press this button to open the TV function. (Launch the InterVideo WinDVR application)
DVD Button	Press this button to open the DVD player for playing any DVD file (Launch the InterVideo WinDVD application)
Internet Button	Open the Microsoft' s IE Internet Explorer
Email Button	Open the Microsoft' s Outlook

The TouchPad

The touchpad is a rectangular electronic panel located just below your keyboard. You can use the static-sensitive panel of the touchpad and slit it to move the cursor. You can use the buttons below the touchpad as left and right mouse buttons.



TouchPad Precautions

The TouchPad is a pressure sensitive device. Please take note of the following precautions.

- Make sure the TouchPad does not come into contact with dirt, liquids or grease.
- Do not touch the TouchPad if your fingers are dirty.
- Do not rest heavy objects on the TouchPad or the TouchPad buttons.

You can use the TouchPad with Microsoft Windows as well as non-Windows applications.

Data Storage and Retrieval

Data storage and retrieval are two of the most fundamental tasks you will perform when working with your computer. The Notebook is equipped with a hard disk drive (HDD).

The HDD is removable allowing for easy upgrades.

The DVD-ROM/Combo

Features of the DVD-ROM/Combo Module

The features of the DVD-ROM/Combo drive are listed below.

- The Audio Play feature allows you to play music CDs
- Front panel load/unload button
- Supports CD-DA, DVD-ROM mode 1 and mode 2, Multi-Session Photo CD™, CD-I/Video CD (pcs.)
- Low power consumption
- 12.7mm height

Precautions for Handling DVD-ROM/Combo Discs

- Always hold the disc by the edges, avoid touching the surface.
- Use a clean, dry, cloth to remove dust, smudges, or fingerprints. Wipe from the center outward.
- Do not write or place objects on the surface of the disc.
- Store discs in a cool dry place not to damage the disc.
- Do not use benzene, thinners, or cleaners with detergent. Only use DVD-ROM cleaning kits.
- Do not bend or drop the discs.

PCMCIA Cards and Expansion Sockets

The Notebook features one PCMCIA expansion socket design to interface with one Type II card.

Inserting a PCMCIA Card

The computer will emit a medium tone followed by a high tone when a PC card is inserted. When you eject a card, the computer will emit a high tone followed by a medium tone. You can insert and remove a PC card whether the computer is turned On or Off.

Follow these instructions to insert a PCMCIA card:

1. Hold the PCMCIA card with the arrow side up and the connector side toward the socket.
2. Align the card connectors with the socket and carefully slide into the socket until it locks into place.

The system will beep once to indicate that it has detected the PC card.

To remove a PC card push the eject button, the button will pop-out, push the button again to eject the PCMCIA.

When inserting a Type II PC card, make sure the connector is inserted in the socket. Before ejecting a PC card, ensure that it is not being accessed by the System.

For example, if the message "Write protect error writing Drive x" is displayed, the user has to change the write protect switch setting on the memory card. To change the switch setting, (a) eject the card, (b) change the switch setting, and (c) re-insert the card.

Always disconnect all telephone lines from the wall outlet before servicing or disassembling this equipment. To reduce the risk of fire, use only No. 26 AWG or larger telecommunication line cord.

Power Saving Modes

This section contains information on the Notebook's power system, including the AC Adapter, the battery system, recharging the battery, and tips for conserving battery power.

The power system is comprised of two parts, the AC Adapter and the battery system. The AC Adapter converts AC power from a wall outlet to the DC power required by the computer.

The Battery Power System

A fully charged pack will provide approximately 2 hours of battery life depending on your system configuration application it runs. Before using the computer on battery power for the first time, check the battery status icon on the Windows Toolbar to make sure the battery is fully charged.

See Battery Status later in this section for a description and explanation of the Windows Battery icon.

Charging the battery takes about 4 hours to charge when the system is in off state. If possible, always charge the battery completely.

Removing the Battery Pack

To remove the battery pack from its compartment, please refer to Chapter Three, Inserting and Removing the Battery Pack.

Preparing the Battery Pack for Use

Before using the battery pack for the first time, the Smart Battery IC within the battery pack should be calibrated in order to get accurate reporting of remaining battery life status.

To calibrate the battery pack follows the instructions below:

1. Insert the battery into the battery compartment and turn on the Notebook. If the battery is completely without power go to the next step.
Otherwise, let the battery run down until the battery low-low warning beeps are heard.
The system will automatically enter Suspend mode.
2. Turn the Notebook off. Connect the AC adapter and let the battery fully recharge. When the battery charge indicator turns off, the battery is fully charged.
3. Turn On the notebook, let the battery run down until the battery is in low-low state and you hear a warning beeps. The system will automatically enter the Suspend mode. You can now connect the AC adapter.
4. The battery pack is now calibrated properly.

In general, using the battery until the low-low battery-warning indicator appears and fully recharges the battery each time (full discharge/charge cycle) will ensure the accurate reporting of the battery gauge status.

Automatic Battery Pack Charging Function

You can automatically charge the battery pack by using the AC Adapter. The charge time is about 4 hours when the Notebook power is turned off. The following table summarizes the charging modes:

Charge Mode	Charge Time
Fast	4 hours with the system off or in Suspend mode. The temperature must be 25°C or below room temperature.

Pre-Charge	A pre-charge is supplied to the Li-Ion battery pack.
------------	------------------------------------------------------

Battery Status

Windows XP has an applet in the Control Panel that will display an icon in the Windows taskbar indicating when the Notebook is running on battery power or is attached to the AC adapter.

This applet also displays a meter that indicates how much charge is remaining in the battery.

Battery Low Warning

When the pack initially reaches the “Battery Low” state approximately 7 ~ 10 minutes of the usable battery life is left.

You will hear an audible beep signal every 1.5 seconds alerting you to the “Battery Low” status. When the battery power reaches the “Battery Low Low” status the beeping sound will accelerate.

Your battery now has 1 ~ 2 minutes of battery charge remaining. You must save your data or connect AC power immediately; otherwise, you may lose your data.

Sound	Meaning
Continuous beeping every 1.5 seconds	Battery Low: Indicates that there is 7 to 10 minutes charge remaining.
Beeping accelerates	Battery Low Low: Indicates that there is 1 to 2 minutes of battery charge remaining. Save your work and turn off the Notebook, or connect the AC adapter.

When there is only one minute of battery charge remaining, the Notebook will enter suspend mode or hibernate according to Windows setting. You should connect AC power and resume to save your work.

Small Battery for the Real Time Clock

There is a small built-in battery pack that supplies power to the system in order to maintain certain system information while the power is off. If the Notebook is left without a power source for long period of time, this battery will be exhausted and system information will be lost.

Danger of explosion if battery is incorrectly replaced. Replace only with the same or equivalent type recommended by the manufacturer. Dispose of used batteries according to the manufacturer's instructions.

Never remove the battery pack while the power is on as this may result in data loss when the system loses power.

Battery Calibration

The purpose for this process is to provide a long battery life for your system battery pack.

1. Turn on the computer, when the text appears, press [Del] or the [Delete] key until the system enters the BIOS Setup screen, you may now make the necessary changes.
2. Press the → arrow key until it reaches the “Exit” menu screen. Again press the ↓ arrow key and select the “Battery Calibration” item.
Press the [Enter] key and disconnect the AC adapter then press the [Y] key until you hear continuous battery low-low warning beeping sounds. The system will be fully discharge and shutdown completely.
3. Connect the AC adapter and let the battery fully recharge. The “Battery Charge LED” which is located at the left side of the notebook will light indicating it is in charging status.
4. When the battery charge LED turns off will indicate the system is fully charged.
5. Repeat step 1 to 4 once again.
6. The battery is now fully calibrated.

Resetting the System

After installing a software application package, you may be prompted to reset the system to load the changed operating environment. To reset the system, or “reboot,” press the [Ctrl] + [Alt] + [Delete] keys simultaneously. This is known as “warm boot.” This key combination acts as “software” reset switch when you encounter hardware or software problems, which lock up the Notebook.

If this key combination does not shut down the Notebook, you can reset the Notebook by using the Notebook’s power button. Should the Notebook lock up for some reason, pressing this button powers the Notebook off.

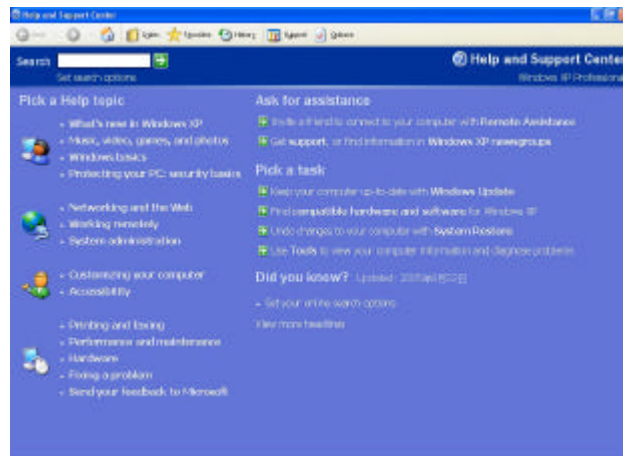
Adjusting the Brightness

To adjust the brightness on the LCD screen, press and hold down the [Fn] key in the lower left hand corner of the keyboard and press the [F7] key to reduce the brightness or [F8] to increase the brightness.

Using the Windows

Help Windows

For Windows XP help, click **Start → Help and Support** icon will open the dialog box.



Desktop

Desktop may vary differently on the software installed in your notebook with different or additional shortcuts.

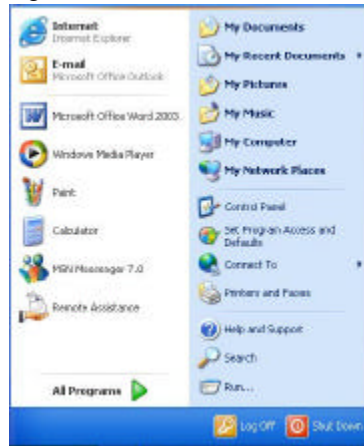


Recycle Bin

Used for storing deleted files in case you want to recover and save it in your system. The files will only be deleted from the Recycle Bin permanently only if you empty it by right clicking your mouse and select the "Empty Recycle Bin".

Start Button

Allows easy access to all Windows programs.



The **Start** menu allows you to adapt and show the programs used most frequently. If you wish to keep an item, right click the item and click **Pin to Start menu**.

Log Off will enable the current user to log off and allows a new user to log on.


Turn Off Computer allows you to shut down, restart, and Stand by modes for power saving purposes.

Taskbar

When you open a program, its icon is displayed at the taskbar for you to conveniently move between programs by clicking the relevant button.

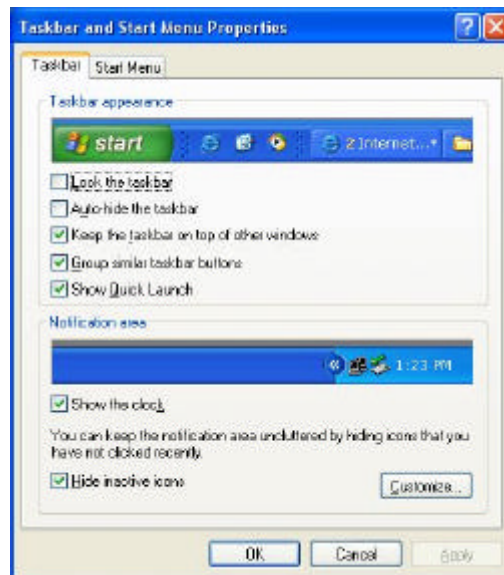
To add or remove toolbars from the taskbar: right click an empty spot on the taskbar, select **Toolbars** → **choose the toolbar you want to add**.

Notification

The icons that appear here are for quick access to some programs and computer functions that you frequently used. For you to see the hidden icons, simply click the  icon.

To prevent Windows XP from hiding icons:

From an empty spot on the **Taskbar**, right click your mouse and select the **Properties**, remove the checked mark on the **Hide inactive icons**.



Control Panel

It is in this area that you can change how Windows looks and works. Click Start → Control Panel dialog box. There are two interfaces – **Classic View** or **Category View**.



DESKTOP OPERATION

This chapter discusses those functions of your notebook that are typical of desktop systems.

Audio

The Multimedia Sound System

The Notebook's built-in audio capabilities allow you to take advantage of a wide range of education and entertainment multimedia software. The Notebook is equipped with internal stereo speakers, a microphone, and input audio ports for external audio units.

An external microphone can be connected to the microphone jack. External speakers or headphones can be connected to the Notebook's audio-out jack. External audio devices can be connected to the Line in jack.

Audio Volume Control

The Notebook is equipped with hot-key volume controls: Pressing the [Fn] + [F3] hot-key combination decreases the audio output volume; press the [Fn] + [F4] hot-key combination increases the audio output volume.

Audio Software

Your notebook comes equipped with an integrated sound system capable of providing you with quality audio sound through the built-in speakers or through external speakers connected via the system ports.

Sound Recording

Your system allows you to record sounds and store them as files using the microphone via the microphone jack on the rear of the notebook computer. Check the Windows Help and Support Center in Windows for information on using the various elements in sound recording.

NOTE

For a high-quality sound, click on the "Volume Control" at the lower right end of your screen. From the Volume Control windows, click on the "Advanced" tab, click and select the "Microphone Boost" item.

Playing Sound Files

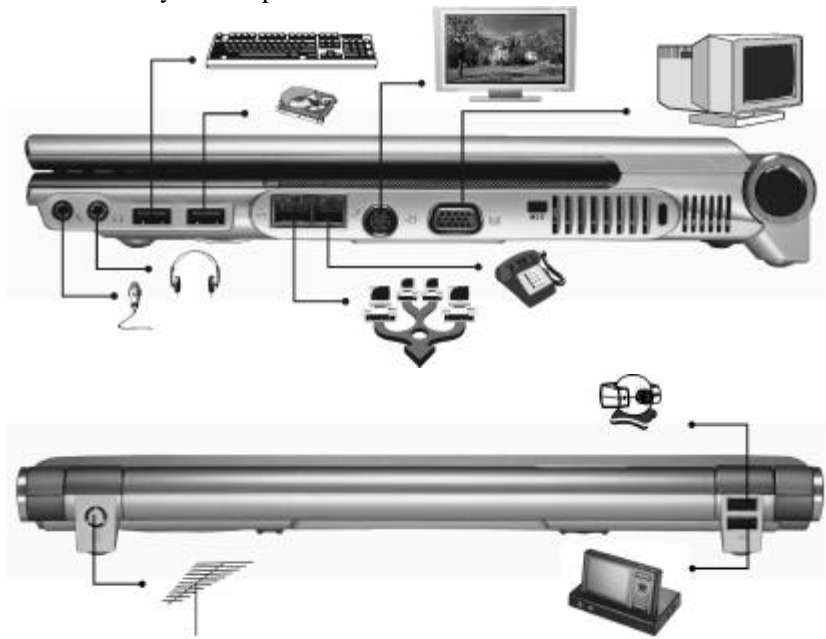
Your notebook can play audio files stored in MIDI, WAVE or MP3 file format. Check the Help and Support Center in Windows for information on the functions of the Media Player.

External Speakers and Microphone

The sound system is capable in providing high-quality sound to external speakers and receiving and processing sounds from an external microphone or external sound source.

Connecting Peripheral Devices

To expand your computing capabilities, you can add a variety of external devices to your computer.





Page intentionally left blank



INTERNET CONNECTION

There are numerous ways to connect to the Internet. This may vary from the user's working environment as well as system specifications.

- Using a modem and a telephone line
- Using a wired LAN
- Using a wireless LAN (Optional)

Using a modem for Connection to Internet

- Use a telephone line to connect to the modem port of your computer. Do not use a digital telephone line.
- Please apply to an Internet Service Provider (ISP) for Internet service in order for you to connect the modem to the Internet and use e-mail.

NOTE

For more detail on the Network key, please refer to your local ISP provider and follow the procedures describe in the "ISP Installation Guide" to proceed with the installation.

Using a wired LAN for Connection to Internet

For you connect to the Internet, a wired LAN environment normally uses the company's LAN or a broadband modem.

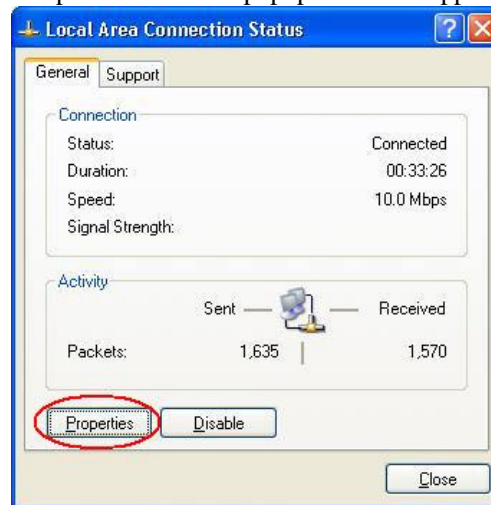
1. Use the network (LAN) cable to connect to the LAN port of the system.
2. Select on "My Network Places" and click on the "View Network Connection" in the "Control Panel" window.



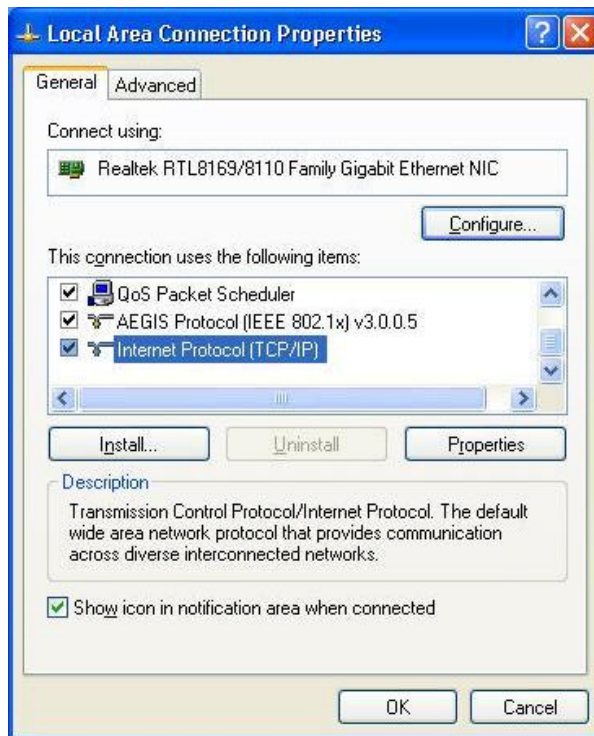
3. In the "Network Tasks" window, use your mouse pointer to click on the "Local Area Connection".



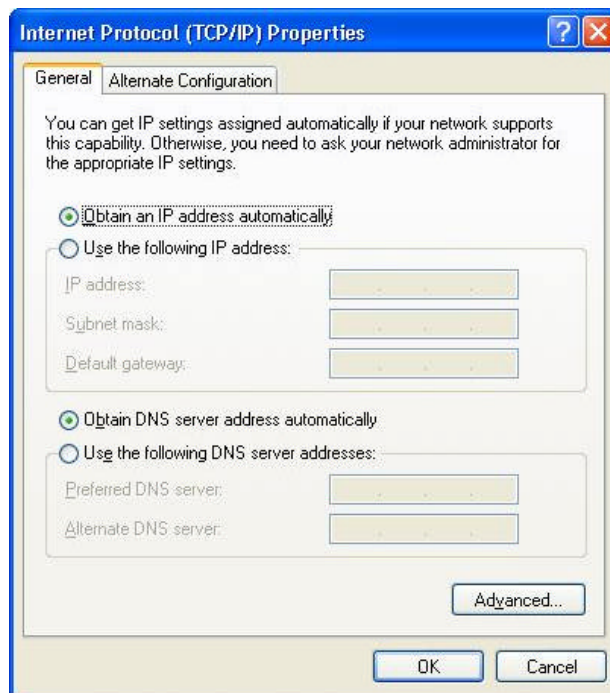
4. Select “Properties” from the popup menu that appears



5. In the “This connection uses the following items” field, select “Internet Protocol (TCP/IP), and click “Properties”.



6. Enter the system's IP and DNS server addresses on the General tab of the "Internet Protocol (TCP/IP) Properties" window. If DHCP is used, click "Obtain an IP address automatically" and "Obtain DNS server address automatically" on the General tab.

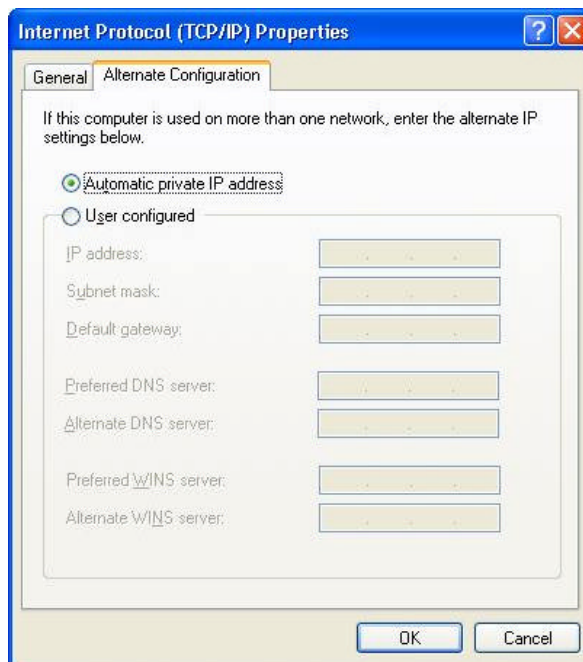


7. After all the all the information are correctly entered in the “Internet Protocol (TCP/IP) Properties” window, click “OK” to finish.

Using Both DHCP and Static IP for Connection to Internet

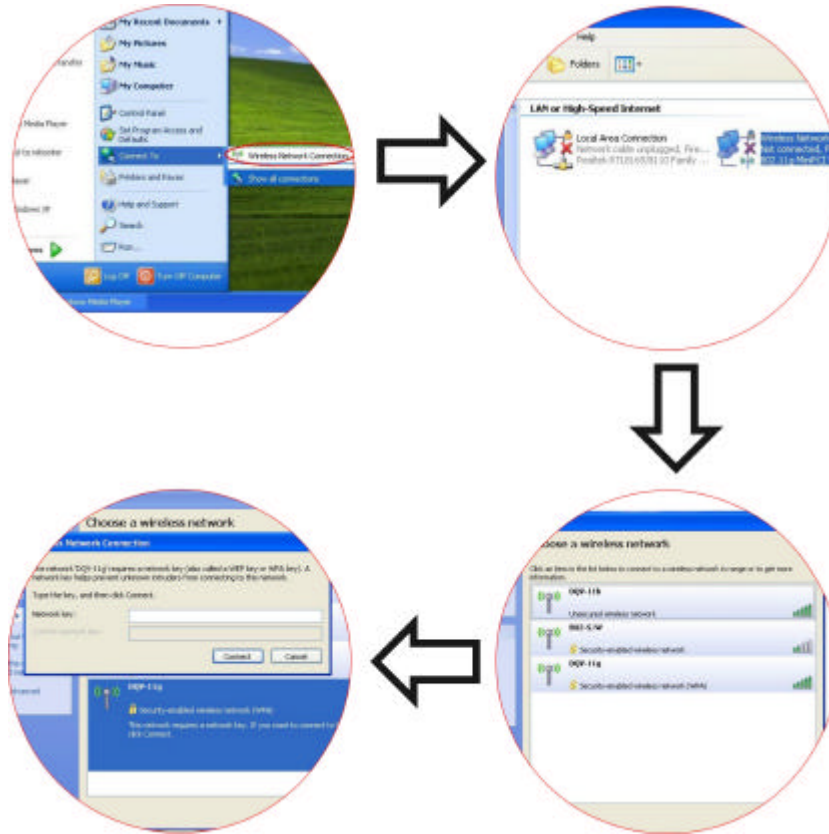
When you are alternatively using networks with either DHCP or static IP addressing, you can use alternative settings that enable simultaneous configurations of DHCP and static IP to use both of the network connects without reconfiguring.

1. Follow the steps mentioned when you are using wired LAN connection from 1 to 7.
2. Click on the “User configured” and enter the appropriate values in the “Alternate Configuration” tab.



3. When you have completed the entire configuration, click “OK”.

**Using Wireless LAN Network for Connection to Internet
(Microsoft's Service Pack 2) (Optional)**



CONFIGURING AND MAINTAINING YOUR SYSTEM

Introduction

The BIOS (Basic Input and Output System) Setup program is a menu driven utility that enables you to make changes to the system configuration and tailor your system to reflect installed hardware or alter system performance. When the Notebook is turned back on, the system is configured with the values stored in CMOS. With easy-to-use menus, you can configure such items as:

- Hard drives and peripherals
- Boot up Drive Sequence
- Password protection
- Power Management Features

The settings made in the BIOS Setup program intimately affect how the Notebook performs.

Navigating through BIOS Setup

The Setup program has been designed to make it as easy to use as possible. If you accidentally make a setting and don't know which one to switch back to, the Setup program has a hot key that allows you to return to the previous value.

Accessing the BIOS Setup Program

To access the BIOS Setup program, press the DEL key after the Notebook has run through its POST.

Item Specific Help

On the right side of the Setup screen is an area labeled Item Specific Help. This area will list navigation key shortcuts and information that is specific for the item that you are currently editing.

The Menu Bar

The top of the screen has a menu bar with the following selections:

- **Main** - Use this menu to make changes to the basic system configuration.
- **Advanced** - Use this menu to enable and make changes to the advanced features available on your system.
- **Security** - Use this menu to set a password. The password allows boot up and controls access to the BIOS setup menu.
- **Boot** - Use this menu to configure the default system device used to locate and load the Operating System and for booting up the Notebook.
- **Exit** - Use this menu to exit the current menu or specify how to exit the Setup program.

To access the menu bar items, press the right or left arrow key on the keyboard until the desired item is highlighted.

The Legend Bar

At the bottom of the Setup screen you will notice a legend bar. The keys in the legend bar allow you to navigate through the various setup menus.

The following table lists the keys found in the legend bar with their corresponding alternates and functions.

Legend Key	Alternate Key	Function
F1		Displays the General Help window. It can be enabled from anywhere in the BIOS.
Esc		Jumps to the Exit menu or returns to the Main menu from a submenu.
←		Selects the menu item to the left.
→		Selects the menu item to the right.
↑ or ↓	arrow keys	Moves the cursor up and down between fields.
Tab	Enter	Moves the cursor to the next position available in the field.
Shift + Tab		Moves the cursor to previous position available in the field.

Legend Key	Alternate Key	Function
Minus key (-)		Scrolls backward through the values for the highlighted field.
Plus key (+)		Scrolls forward through the values for the highlighted field.
Home	PgUp	Moves the cursor to the field at the top of the window.
End	PgDn	Moves the cursor to the field at the bottom of the window.
F9		Sets the parameters for the current menu to their <i>default</i> values.
F10		Save and Exit.
Enter		Will select a sub menu or show a range of options for a field.

Launching Submenus

Note that a right pointer symbol ρ appears to the left of certain fields. This pointer indicates that a submenu can be launched from this field. A submenu contains additional options for a field parameter. To call up a submenu, simply move the cursor to highlight the field and press the **[Enter]** key. Use the **[Esc]** key to return to the Main menu.

General Help

In addition to the Item Specific Help window, the BIOS Setup program also provides a General Help screen can be called up from any menu by simply pressing **[F1]**.

To exit the help window, press the **[Enter]** or the **[Esc]** key.

Save Changes and Exit the Setup Program

Refer to the Exit menu section of this chapter for detailed information on saving changes and exiting the setup program.

The Main Menu

When the Setup program is accessed, the following screen appears:

BIOS SETUP UTILITY	
Main Advance Security Boot Exit	
System Overview	Use [ENTER], [TAB] or [SHIFT-TAB] to select a field.
Processor Type : Intel (R) Pentium (R) M CPU Speed : 2000MHz System Memory Size : 504MB	Use [+] or [-] to configure system time.
System Time [00:18:12] System date [Fri 12/05/2003]	
▶ Primary IDE Master : [Hard Disk] ▶ Secondary IDE Master : [ATAPI CDROM]	← → Select Screen ↑ ↓ Select Item + - Change Field Tab Select Field F1 General Help F10 Save and Exit ESC Exit
V02.57 (C) Copyright 1985-2004, American Megatrends, Inc.	

The Advanced Menu

Selecting *Advanced* from the menu bar displays the advanced menu:

BIOS SETUP UTILITY				
Main	Advanced	Security	Boot	Exit
Advanced Settings		Allows BIOS to skip certain tests while booting. This will decrease the time needed to boot the system.		
WARNING: Setting wrong values in below settings may cause system to malfunctions				
Quick Boot	[Enabled]			
Quiet Boot	[Enabled]			
PS/2 Mouse Support	[Auto]			
Legacy USB Support	[Enabled]			
USB Beep Message	[Enabled]			
AUTO DIM Supported	[Enabled]			
Light Sensor DIM Control	[Disabled]			
Shortcut key working with	[InterVideo]			
		← →	Select Screen	
		↑ ↓	Select Item	
		+ -	Change Option	
		F1	General Help	
		F10	Save and Exit	
		ESC	Exit	
V02.57 (C) Copyright 1985-2004, American Megatrends, Inc.				

NOTE

If your system support InterVideo application, select the "InterVideo" item from the "Shortcut Key Working With" selection menu.

If your system supports the WinXP MCE application, select the "WinXP MCE" item from the "Shortcut Key Working With" selection menu.

If your system supports the CyberLink application, select the "CyberLink" item from the "Shortcut Key Working With" selection menu. (Optional)

The Security Menu

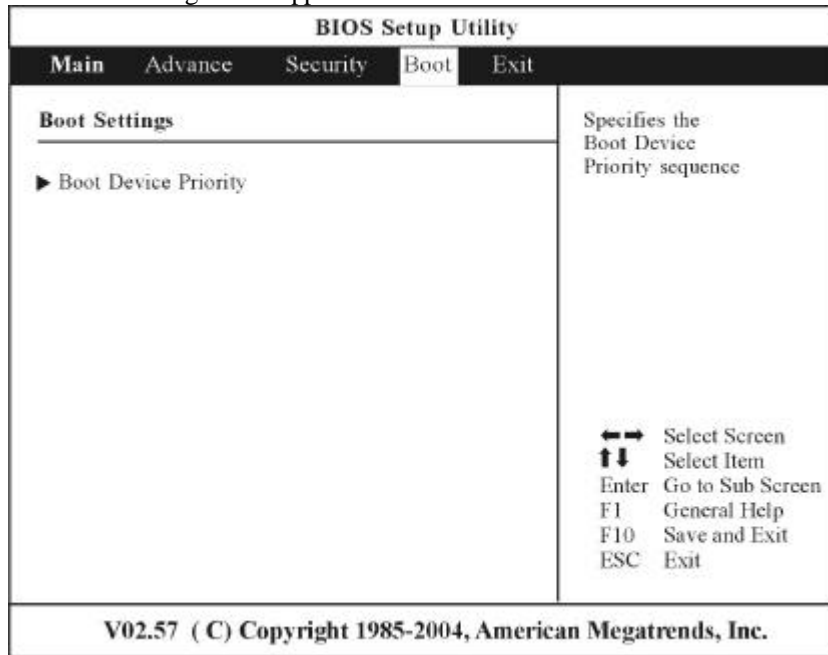
The Notebook's advanced system of security allows you to set a password to prevent unauthorized access to system resources, data, and the BIOS Setup Program.

BIOS SETUP UTILITY				
Main	Advance	Security	Boot	Exit
Security Settings		Install or Change the password		
Supervisor Password : Not Installed User Password : Not Installed				
Change Supervisor Password Change User Password				
Boot Sector Virus Protection [Disabled]				
		←→ Select Screen ↑↓ Select Item Enter Change F1 General Help F10 Save and Exit ESC Exit		
V02.57 (C) Copyright 1985-2004, American Megatrends, Inc.				

The Boot Menu

The Boot menu allows the user to specify the order in which the Notebook is to check for a device to boot the system. You can also configure the way that the system will boot up. To make changes, select *Boot* from the menu bar.

The following screen appears:



Use the up and down arrows to select the boot device. Then press either the plus key [+] to move the device up the list or the minus key [-] to move the device down the list.

The Exit Menu


Once you have made all of your selections from the various menus in the Setup program, you should save your changes and exit Setup. Select *Exit* from the menu bar to display the following menu:

BIOS Setup Utility				
Main	Advance	Security	Boot	Exit
Exit Options				Exit system setup after saving the changes.
Save Changes and Exit				F10 key can be used for this operation
Discard Changes and Exit				
Discard Changes				
Load Optimal Defaults				
Load FailSafe Defaults				
Battery Calibration				
				←→ Select Screen
				↑↓ Select Item
				Enter Go to Sub Screen
				F1 General Help
				F10 Save and Exit
				ESC Exit
V02.57 (C) Copyright 1985-2004, American Megatrends, Inc.				

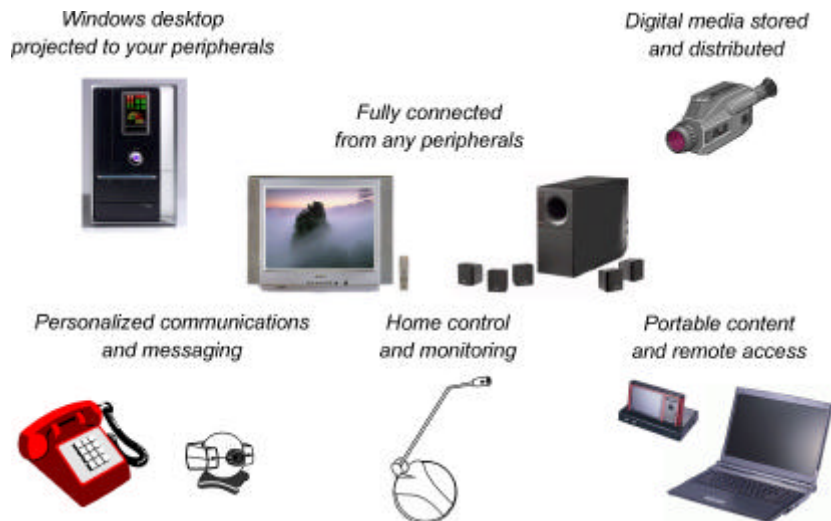
MICROSOFT CENTER EDITION (MCE) (OPTION)

Windows XP Media Center Edition (MCE)

The Windows MCE is a complete software for home PC operating system for you to enjoy entertainment choices together in one place easily accessible from anywhere in the room. This will benefits the consumers to enjoy Media Center experience in their own living room.

 **NOTE**

For more information on the function of the MCE, please refer to the Microsoft's Windows XP MCE user's guide that goes along with your software package.



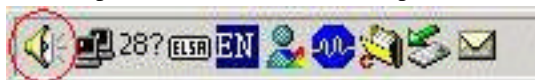


NOTE

Please be advised that when you received your computer, the MCE port is at the right side.

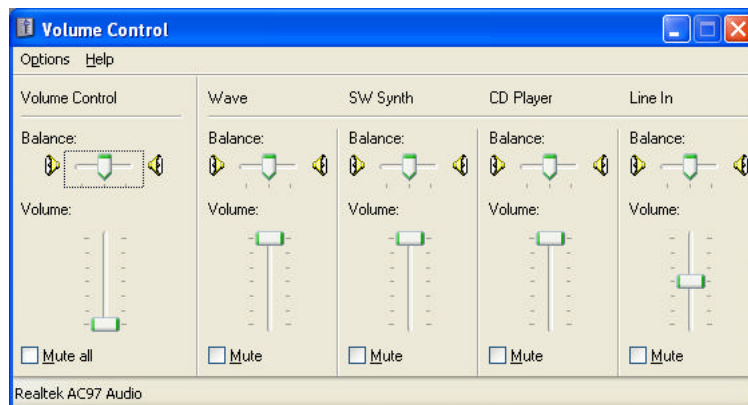
MCE Application Sound Adjustment

This notice only applies to those systems that only support MCE application when you are using the Windows volume adjustment function. From your Windows, click on the lower left corner of the screen the speaker icon and open the Volume Control Properties Window.

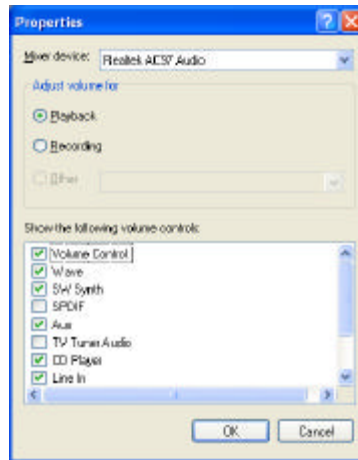


If you are using MCE's "My TV" application

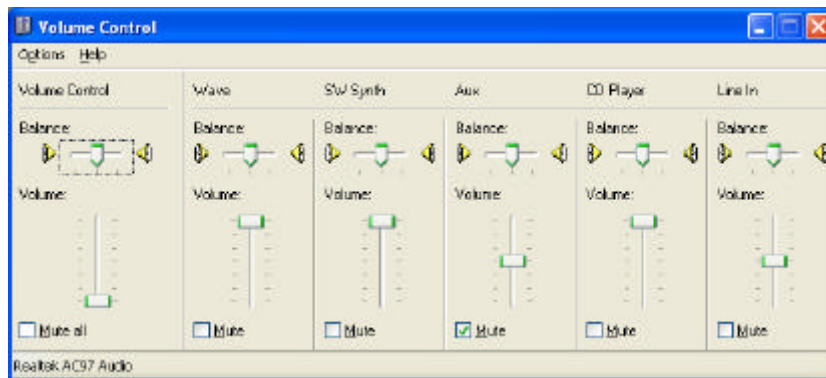
- Use your mouse right button to click on the "Volume" icon and select the "Open Volume Control" item.
- The "Volume Control" display window is displayed on your screen.



- Click on the "Options" tab and select the "Properties" item.



- From the “Properties” display window, enable the “Aux” item and click “OK”.
- The “Aux” is now added on the “Volume Control” window.



- Enable the “Mute” tab on the “Aux” item and close the window.

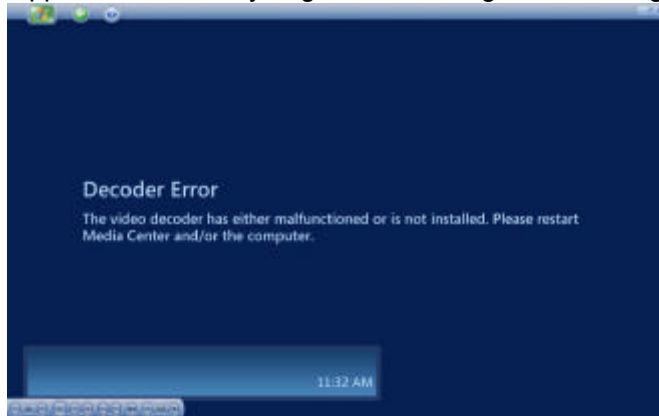
If you are using InterVideo’s WinDVR application

The procedures are almost the same as those mentioned above from steps 1 to 5 to adjust the volume control. On step 6, disable the “Mute” tab on the “Aux” item and close the window.

Playing Live TV on an MCE

When playing Live TV under the MCE environment please note these important instructions.

- If when you click on “Live TV” button on your MCE application window you get the following error message:



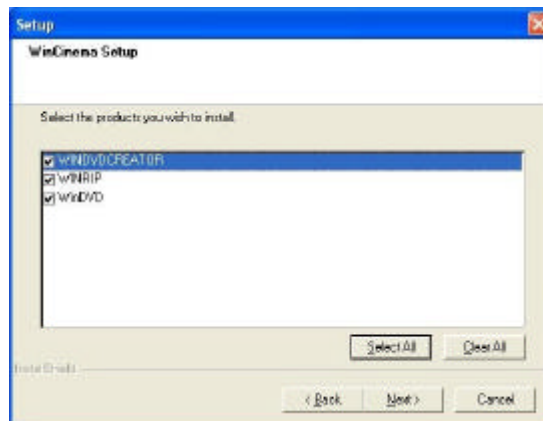
- You will need to install the “WinDVD” software from the WinCinema utility driver on your support CD. After insert the support CD into your optical disk drive, the system will automatically run the autorun application.



- Click on the “Application” tab to display the “Multi Menu” window.



- Select “InterVideo WinCinema XP MCE” from the pull-down menu, then click the “Setup” button.
- From the “Setup” window, choose the desired software or press the “Select All” button.



- Follow the Wizard’s on-screen instructions to complete the installation.
- Restart the system.

Page intentionally left blank