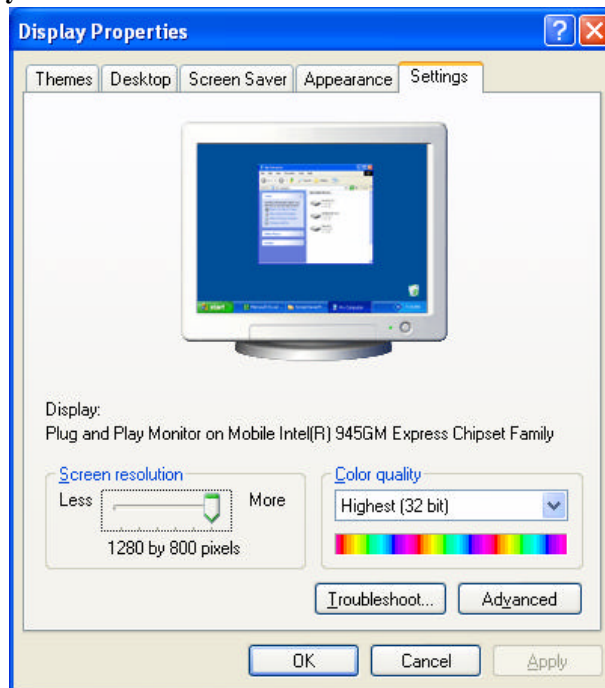
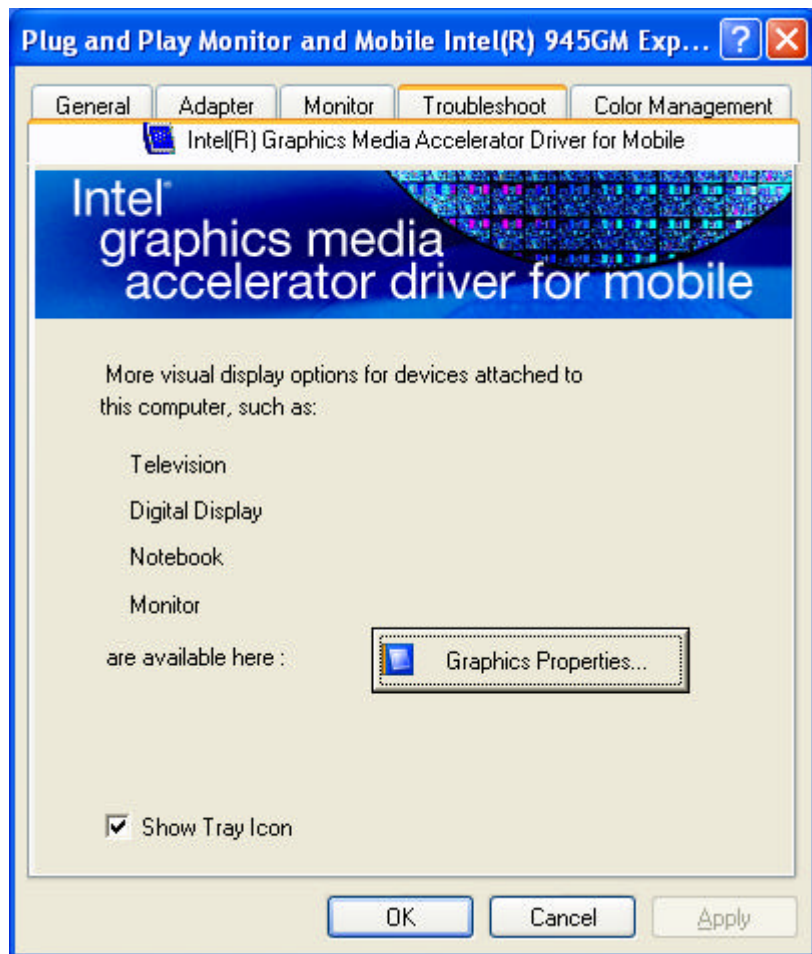


VGA UTILITIES

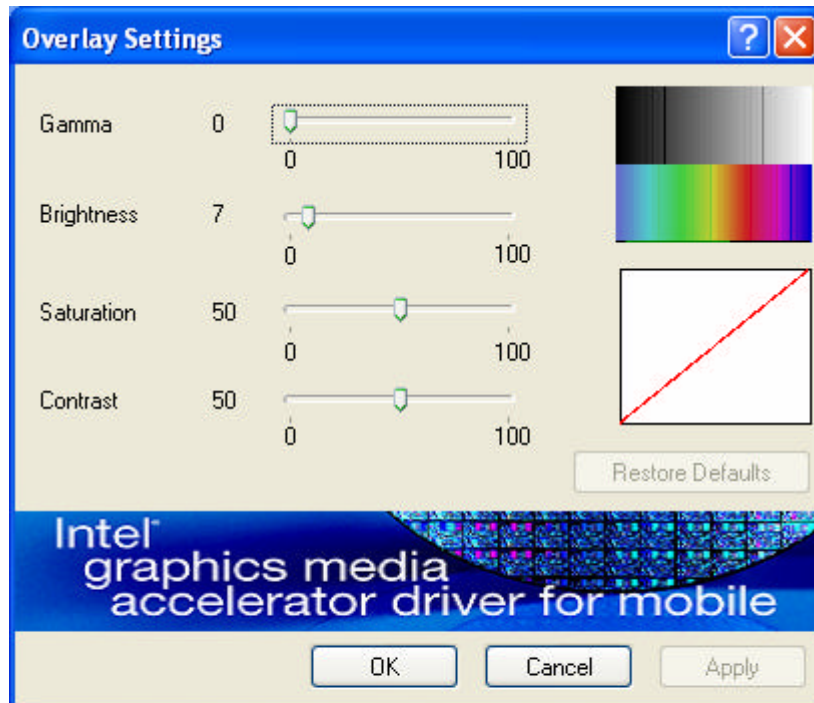
Intel Graphics

After you have restarted Windows, open the “Control Panel” and double click on the “Display” icon. From the “Display Properties” window, select the “Settings” tab and click on the “Advanced” tab to enter the “**Plug and Play Monitor on Mobile Intel® 945GM Express Chipset Family**”.

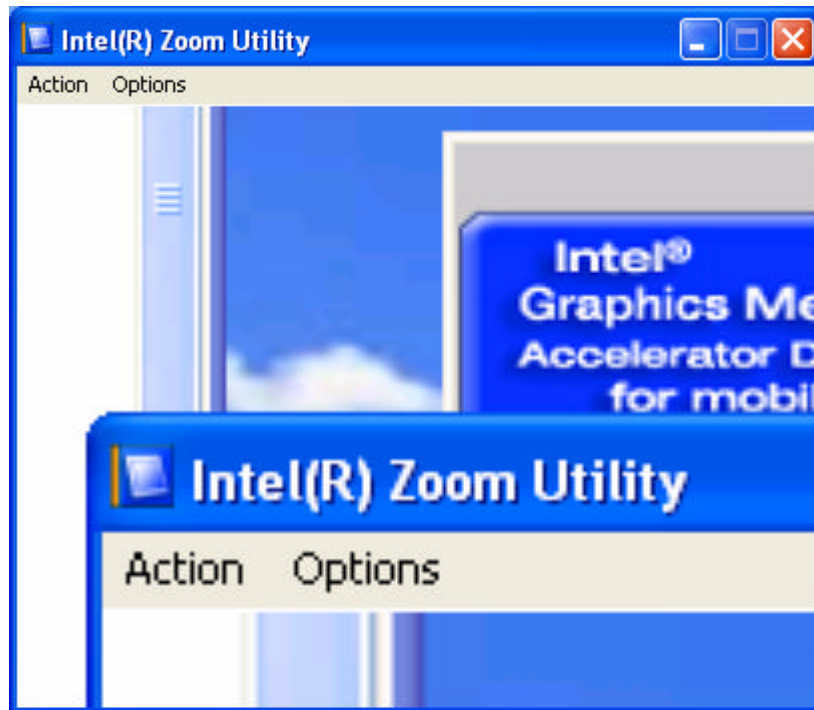




Overlay Settings



Launch Zoom

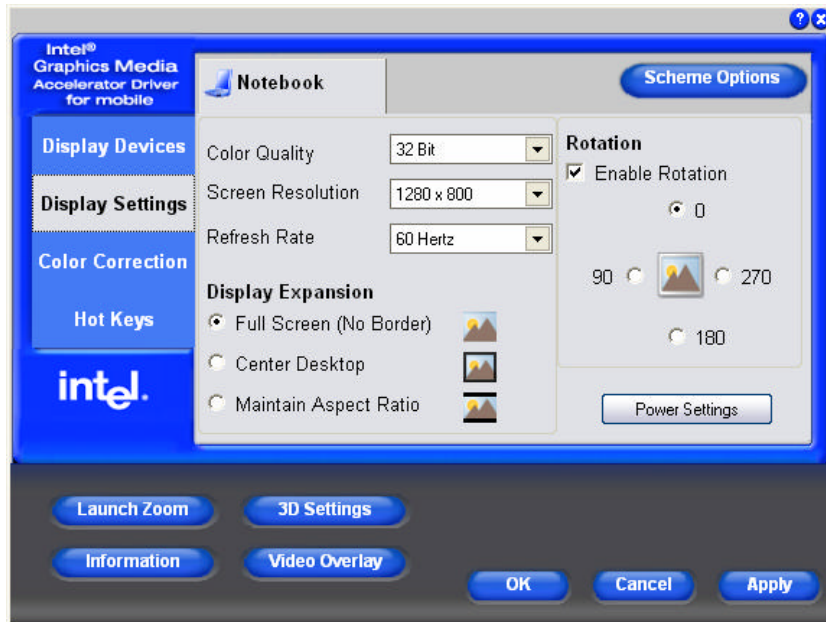


Display Devices

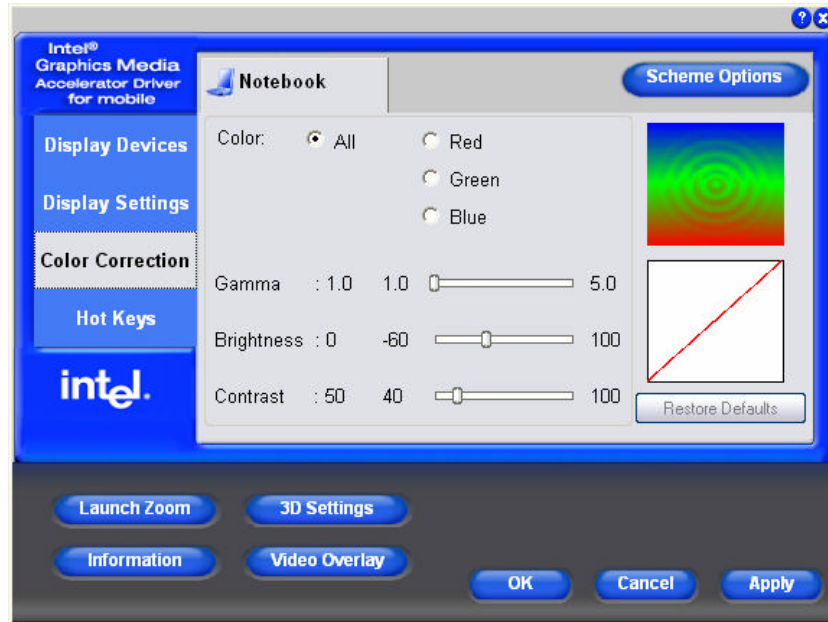
You can adjust the right resolution for your screen display.



Display Settings



Color Correction



Hot Keys



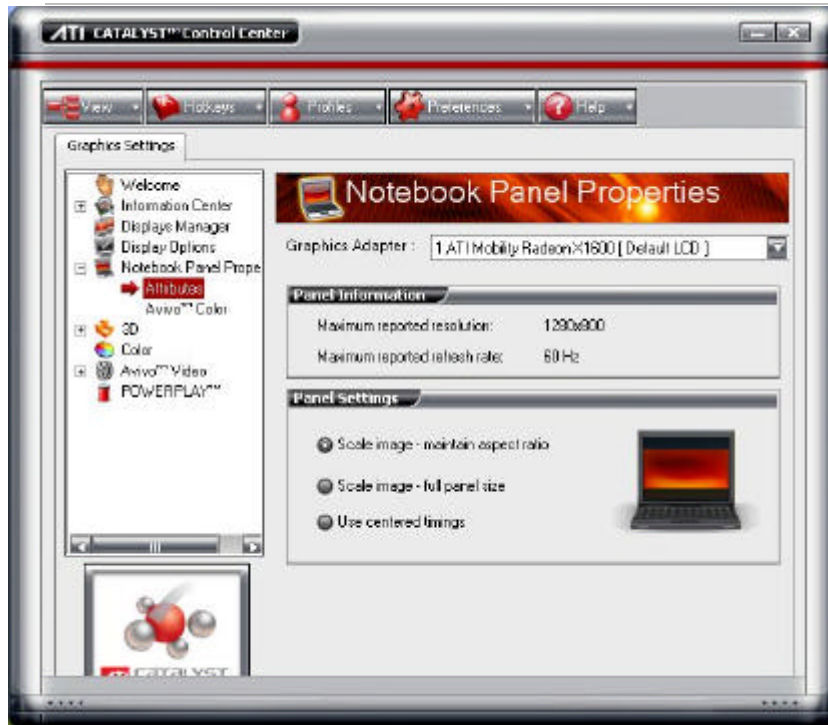
ATI Graphics
Display Managers

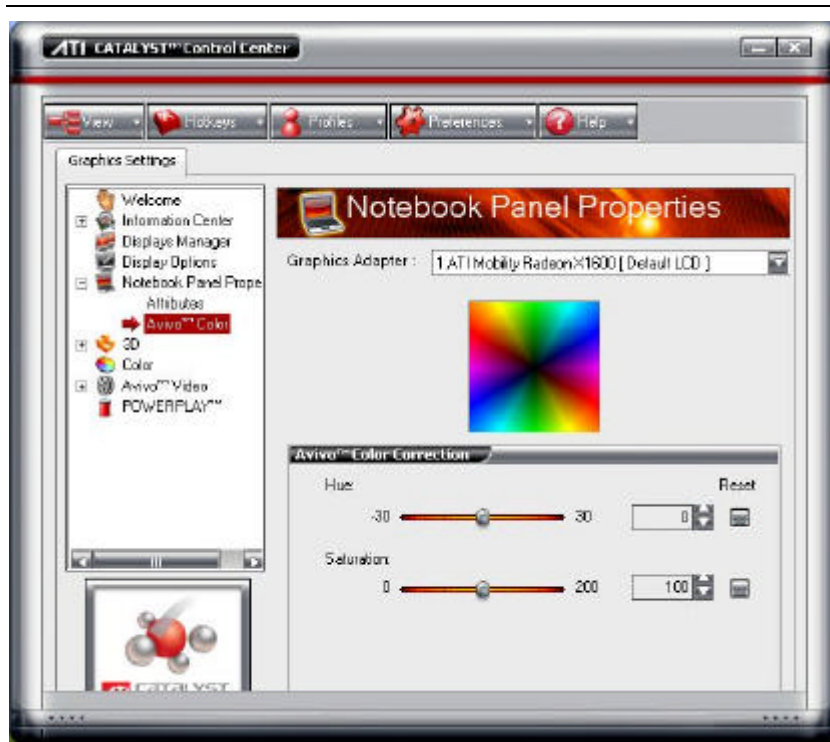


Display Options

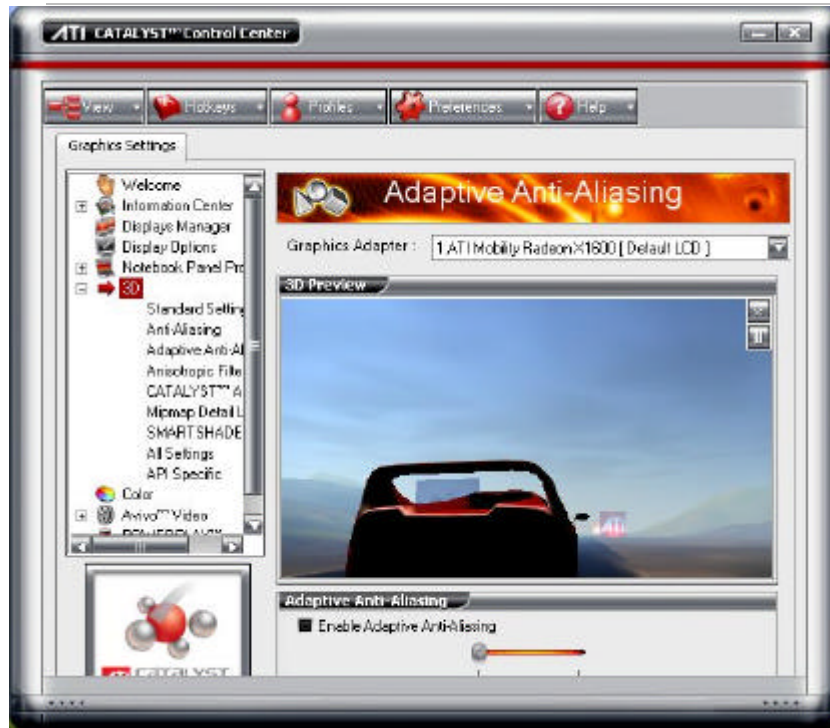


Notebook Panel

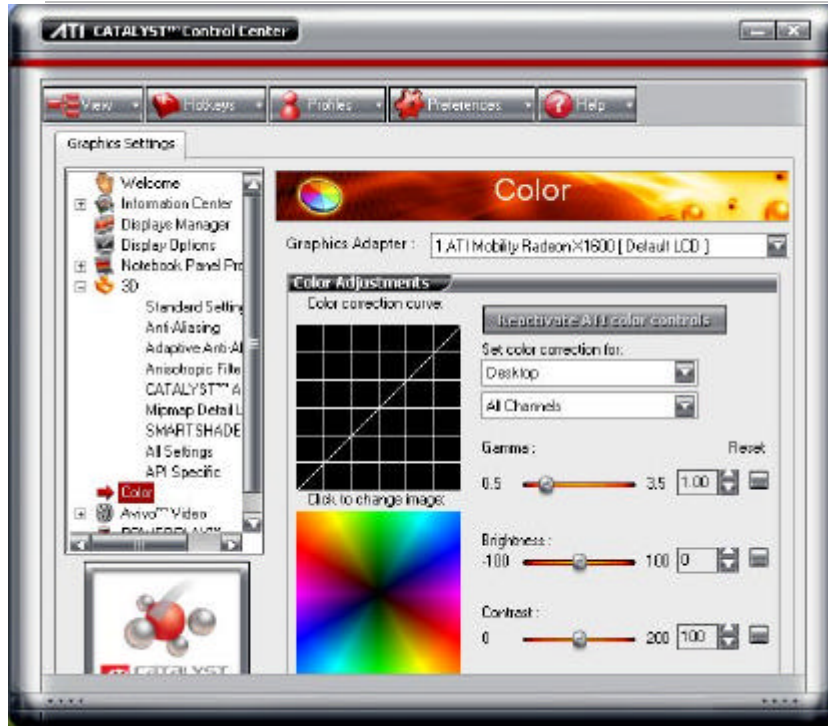




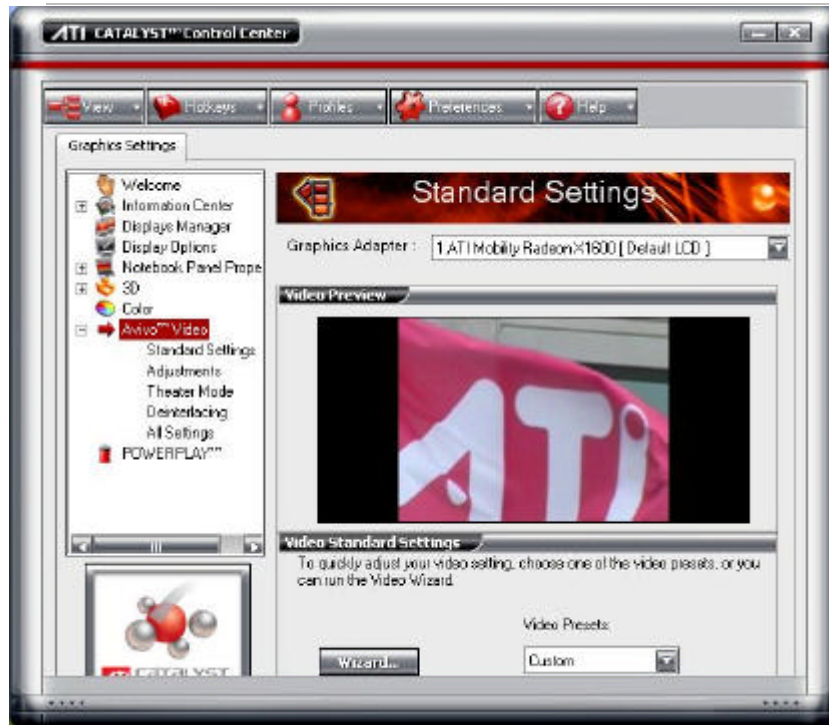
3D



Color



Avivo Video



PowerPlay



VIEWING LIVE VIDEO (OPTION)

The Utility allows you to access the entire range of display controls and configuration options. Its live video can co-exist with other applications running at the time. In addition, you have the choice of keeping the default video window size, scaling it to any other size or using the entire screen for video display. You can either sit in front of your monitor, controlling the video with menu commands, toolbar buttons as well as the TV Tuner, or lay back in your chair with the remote control pad in your hand.

note...



For more detailed information on the function for each individual mode on the Remote Control, please refer to the Remote Control Guide user's manual.

Using the Remote Control




The Remote Control comes with three multimedia softwares: **WinDVR**, **WinDVD**, and **WinRip**. These softwares use only one remote control; the function of each button will vary on different software.

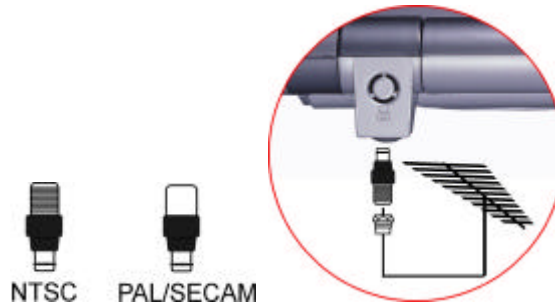
- **DVR Mode Button** - Press the DVD button if you want to use the WinDVR software. “WinDVR” gives you high-quality digital recording of your favorite TV shows on your PC.
- **DVD Mode Button** - Press the DVD button if you want to use the WinDVD software. “WinDVD” uses the power of your PC to bring DVDs to life.
- **RIP Mode Button** - Press the Music button if you want to use the WinRIP software.

WinDVR Mode

Cable Connection

Your notebook supports three video standard namely: NTSC, PAL and SECAM. Ask your local dealer on the type of standard being used in your respective country of origin.

- Remove the cover on the cable TV connector at the rear of the computer with the aid of a screwdriver .
- Connect one end of the cable wire to the RF connector of the computer while the other end is connected to the wall socket or directly to the antenna.



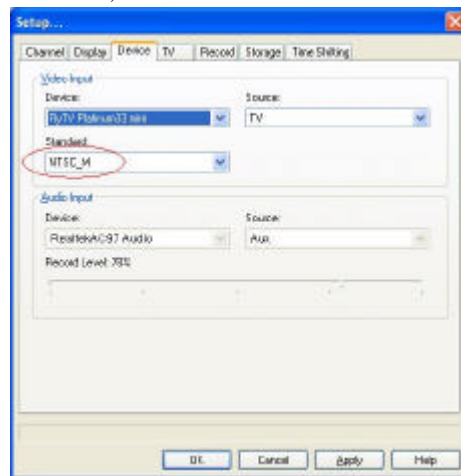
Defining the Video Source

Select the PAL, NTSC or SECAM, depending on which standard the selected source is using. The factory default is the standard used by your purchase country, and normally there is no need to change this setting.



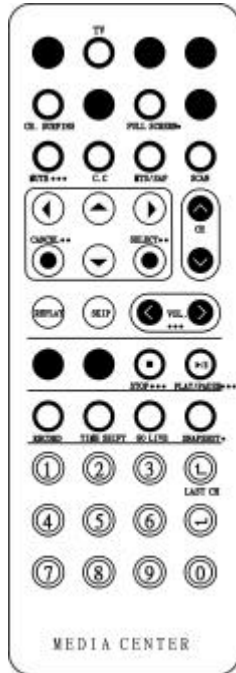
If you are working outside your country, you are required to adjust the setting of our video source. From the WinDVR window, click on your mouse right button and select the **“Setup”** item.

From the **“Setup”** dialog window, click on the **“Standard”** selection items and drag down the arrow to select on the type of TV standard based on your respective country of origin. For **“Source”**, select **“Aux”**.



Application buttons in DVR mode

- TV - Launch the WinDVR application
- Channel Surfing - Surf channels by displaying 16 channels at once.
- Full screen - Change display size to full screen.
- Mute - Mute or restore sound when watching TV.
- C.C. (Close Caption) - Display overlay text caption.
- MTS/SAP - Switch TV sound mode to mono stereo or SAP
- Scan (Auto scan) - Scans all available channels for context.
- Cancel - Cancel.
- Select – OK button.
- CH Up & Down - Selects next higher or lower channel in channel memory.
- Volume (Volume up and down) - Increase and decrease sound.
- Stop - Stops functions such as record, play, rewind, forward and pause.
- Play/Pause - Plays or pauses a scene.
- Record - Records TV and encodes it into MPEG I/II format.
- TimeShift - Pauses live TV.
- Real Screen (Go Live) - Return to the current time of the program.
- Snapshot - Captures a favorite screen shots from the program.
- Numeric Keypad (0-9) - Select a channel up to 99 by pressing two numbers.



Playing Audio Files

When first using the WinDVR application, please follow these instructions to get the best sound results from the audio files you produce.

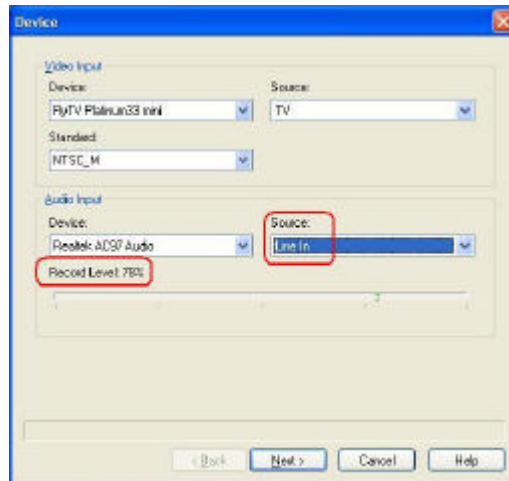
- Click on the “WinDVR” icon



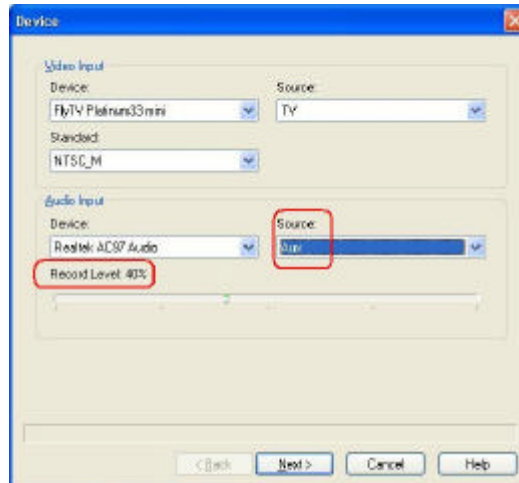
- A “Setup” window will then appear



- Click on the “Device” tab to display the “Device” setup window
- Choose “Aux” from the “Source” pull-down menu.

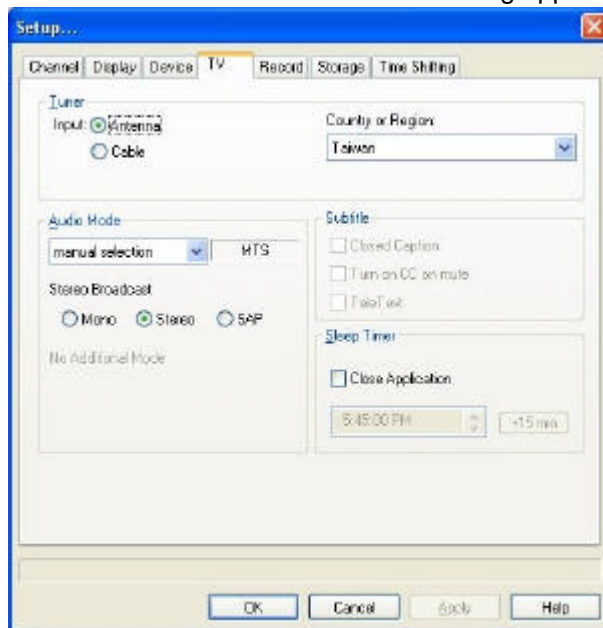


Before



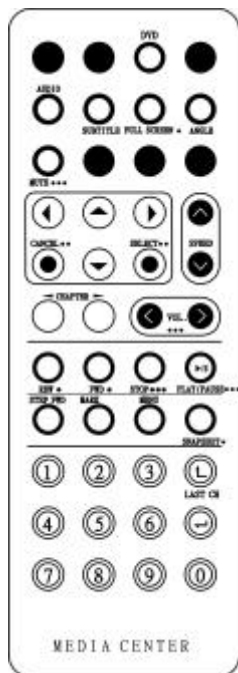
After

- To set the recording level, slide the fader left to decrease and right to increase the sound level
- A recording level of 40% is recommended for music files.
- After you have made the corresponding adjustments, you must then select your country or region.
- Click on the “TV” tab and the “Setup” window will appear.
- Select the country where you are located from the Country or Region pull-down menu.
- Click on the “OK” button to finish the setting application



Application buttons in DVD mode

- DVD - Launch the WinDVD application.
- Audio Selection - Display language selection.
- Subtitle - Activates language subtitles.
- Full screen - Change display size to full screen.
- Angle (Angle Selection) - Display multiple angle viewing (Only on film that support this function)



- Mute - Mute or restore sound when watching CD title or MPEG file.
- Cancel - Cancel.
- Select – Repeat/OK.
- Speed - Speed up the play.
- CHAPTER (Previous & Next) - Selects previous or next chapter.
- Volume (Volume up and down) - Increase and decrease sound.
- REW - Play disc in fast reverse mode.
- FWD - Play disc in fast forward mode.
- Stop - Stops the current play.
- Play/Pause - Starts or pause the disc.
- Step Fwd Single frame advance while in pause mode.
- Mark - Instantly mark your favorite scene.
- Menu - Opens DVD title main menu.
- SnapShot - Captures still images of current playback.
- Numeric Keypad (0-9) - Inputs chapter number to playback.



note...



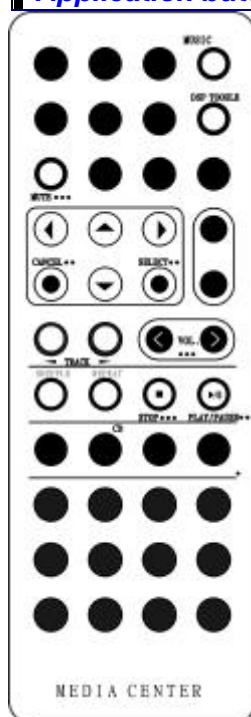
Please take note that when you are playing the DVD application, you will only be able to use the Remote Control DVD button if your system support the InterVideo WinCinema application. If your system support the WinXPMCE application, you will have to use the "Microsoft Remote Control" that comes with your package.

Use Lunch key to choose between these two applications, please proceed to BIOS Setup and select the "Advanced" menu.

From the “Shortcut Key Working With” selection item, select the “InterVideo” if your system only support the “InterVideo” application or the “WinXP MCE” application if your system support the Microsoft’s WinXP MCE application.

To ensure an excellent quality performance when playing a DVD file, we would recommend you to refrain from playing under battery-operated mode. Playing a DVD file under battery-operated mode would only cut back the playtime thus affect its performance. It is best for you to play a DVD file under AC power mode.

Application buttons in Music mode



- Music - Launch the WinRIP application.
- DSP Toggle – Let you enable or disable the DSP window when the WinRIP application is launched.
- Mute - Mute or restore sound when playing music.
- Cancel - Cancel.
- Select - Repeat.
- Track (Previous & Next) - Plays previous or next track in the list.
- Volume (Volume up and down) - Increase and decrease sound.
- Shuffle - Play tracks in random order.
- Repeat - Repeat current track or all tracks.
- Stop - Stop playback.
- Play/Pause - Play or pause a music track.



VIDEO CONFERENCING (OPTION)

This application offers video conferencing capabilities to work and communicate in real-time with one or more participants through streaming video, from any location. You can click on the icon on the Windows screen display to run the capture application.

Application



note...

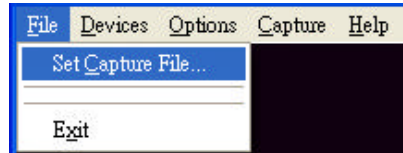


Use the hot key of [Fn] + [F6] to capture the image that appear on your application's screen. You are allowed to capture the image for a number of times until you save it by selecting the "Set Capture File..." in the "File" menu.

Using Commands and Buttons

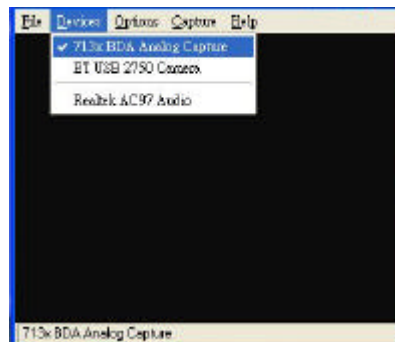
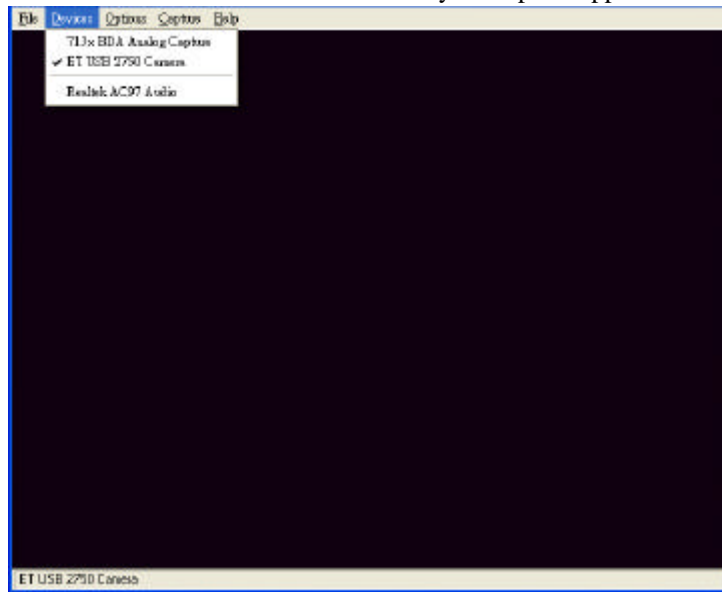
The File Menu Commands and Buttons

- **Set Capture File** - Set to save directory and video file name.
- **Exit** - Exit the application.



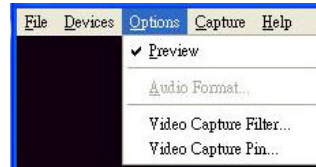
The Device Menu Commands and Buttons

This set the size of the window screen of your capture application



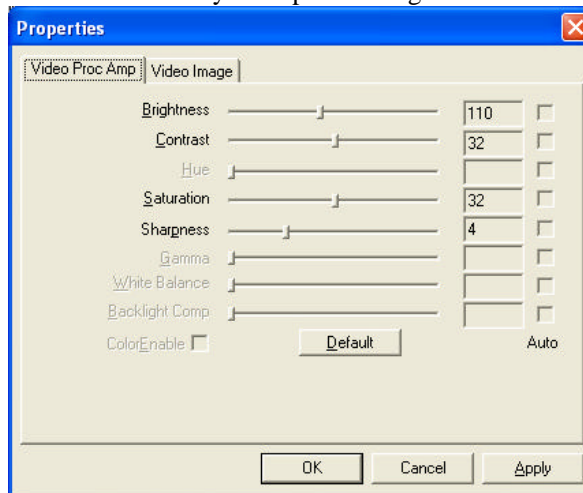
The Options Menu Commands

- **Preview** - Set preview in screen or not.
- **Video Capture Filter** - Set Properties.

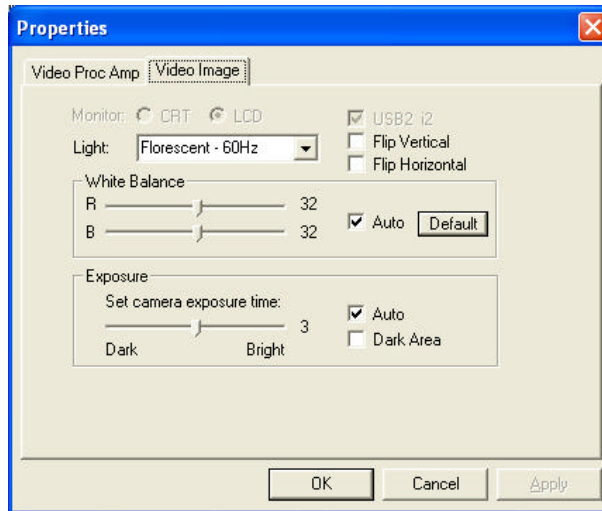


- **Video Capture Pin** - settings of stream format.

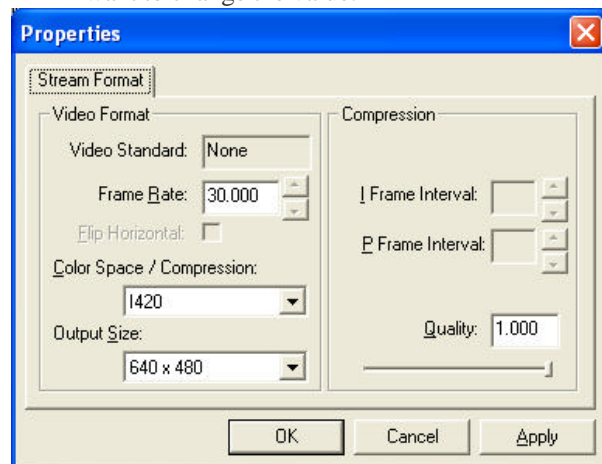
You can set the corresponding feature for Environment, Frequency, Rotation and Extension of your captured image file.



- **Brightness/Contrast/Hue/Saturation/Sharpness/Gamma/White Balance/Backlight Comp** - To adjust video settings and show value.
- **Default** - Reset all settings in this page to default.



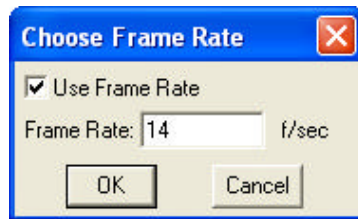
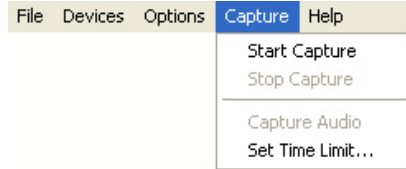
- **Exposure** - De-select the check mark on the box if you want to change the value.



- **Frame Rate** - This function is to set video frame rate. If your utility rate of CPU is too high, you can choose the low frame rate to reduce the CPU's utility rate.
- **Output Size** - Change the output size.

Capture Menu Commands and Buttons

- **Start Capture** - start capture video stream.
- **Stop Capture** - stop capture video stream.
- **Set Frame Rate** - set frame rate while capturing a video.
- **Set Time Limit** - set time limit of capture stream.



Page intentionally left blank

TROUBLESHOOTING

This chapter describes locating and solving problems that you may encounter while using your computer.

Locating a Problem

Problems with your computer can be caused by something as minor as an unplugged power cord – or as major as a damaged hard disk. The information in this chapter is designed to help you find and solve minor problems. If you try all the suggested solutions and you still have a problem, make a list of what steps you have taken to correct the problem and contact your dealer.

Successful troubleshooting is the result of careful observation, deductive reasoning, and an organized approach to solving the problem.

The problems that you will encounter can be divided into two basic categories: hardware problems and software problems. Hardware problems can be further divided into electrical and mechanical problems. You will know you have a hardware problem if the screen is dark, the computer cannot read the disk drives, or you get an error message during the Power-On Self Test (POST).

Software errors can occur at several levels. The ROM BIOS and the operating system can give you a large number of error messages. On top of this, each application software package has its own set of error messages. It is important to determine whether the software error message you are getting is from the application or the operating system. Once you know this, you can look in the respective manual for a solution to the problem.

Checking Cables and Connections

Start by performing a careful visual inspection of the exterior of the computer. If no LEDs are illuminated, make sure that your computer and its peripherals are getting power and communicating with each other properly.

To check the power cables, and connections:

1. If you have been using battery power, connect the Notebook to an external power source and make sure that the battery has a charge.
2. If you are using the Notebook with the AC adapter, check the power outlet, the power cord, and any power switches that may affect your computer.
 - Check the wall outlet or power strip with an item that you know is functioning properly. A lamp or radio is a convenient item for checking the power. You may also need to check the fuses and breakers in your electric box.
 - If the outlet is controlled by a wall switch, make sure that the switch is on.
 - If the outlet is controlled by a dimmer switch, use a different outlet.
 - If your computer is plugged into a power strip with an On/Off switch, make sure the switch is on.
3. With the computer's power switched off, check all cable connections. If the computer is connected to any peripheral devices, look for loose or disconnected cables.
 - If the computer is too close to a wall, a cable connection may be loose or the cables may be crimped.
 - Do not substitute cables for different devices (other than the manufacturer recommended cables) even if they look exactly alike. The wiring inside the cable may be different.
4. When you are certain that you have power available and all connections are good, turn the computer on again. If the computer still does not start, you may have a hardware problem.

The Power-On Self Test

The Power-On Self Test (POST) runs every time you turn on or reset the Notebook. The POST checks memory, the main system board, the display, the keyboard, the disk drives, and other installed options.

A few seconds after you turn on your computer, a copyright message appears on your display screen. A memory test message appears next; as the test continues, memory size increases until all installed memory is tested. Normally, the only test routine visible on the screen will be the memory test.

Two classifications of malfunctions can be detected during the POST:

-
- Error messages that indicate a failure with either the hardware, the software, or the Basic Input/Output System (BIOS). These critical malfunctions prevent the computer from operating at all or could cause incorrect and apparent results. An example of a critical error is microprocessor malfunction.
 - Messages that furnish important information on the power-on and boot processes (such as memory status). These non-critical malfunctions are those that cause incorrect results that may not be readily apparent. An example of a non-critical error would be a memory chip failure.

In general, if the POST detects a system board failure (a critical error), the computer halts and generates a series of beeps. If failure is detected in an area other than the system board (such as the display, keyboard, or an adapter card) an error message is displayed on the screen and testing is stopped. It is important to remember that the POST does not test all areas of the computer, only those that allow it to be operational enough to run diagnostic programs.

If your system does not successfully complete the POST, but displays a blank screen, emits a series of beeps, or displays an error code, consult your dealer.

General Hardware Problems

A few common hardware problems and suggested solutions are presented in the table below:

Problem: The capacity of the battery is between 95 to 99% but can not fully charged.

Solution: Please discharged to less than 95% of its capacity then recharge the battery.

Problem: Failure in the installation of the Audio driver.

Solution: Be sure to first remove the current audio device from your system. Please follow the instruction on the installation of audio driver.

Problem: The display screen is dark

Solution: Make sure that the computer is not in Suspend mode. Check the Brightness controls for the screen. If the controls are turned too far down, the screen will be dark.

Problem: An incorrect date and time are displayed.

Solution: Correct the date and time using the DOS DATE and TIME commands or the options in the Setup Utility. If the date and time become incorrect after a short time, your CMOS battery may be depleted. Contact your dealer to change the battery.

Problem: You hear irregular beeps during operation of the Notebook and the system halts.

Solution: The problem is beyond the scope of this manual. Contact technical support.

Problem: An unidentified message is displayed.

Solution: Reboot the computer and run the BIOS system setup. Confirm the Setup parameters. If the same message is displayed after booting up again, contact technical support for assistance.

Problem: The system cannot access the DVD-ROM drive.

Solution: Check that a CD is properly inserted in the drive. Make sure that you are using the correct program for that kind of CD. For example, the system cannot read a data CD using an audio program.

Problem: You cannot operate the printer.

Solution: Check the printer USB cable connection. Ensure that the printer power switch is turned on. Confirm that the printer is on-line.

Problem: You cannot use the mouse.

Solution: Check the cable connection. Check the mouse with another application to see if there is a software incompatibility problem. If possible, check the mouse with another computer to see if it works. If it doesn't operate on a different system, the mouse might be broken.

Problem: The fan does not stop operating when the system enters the suspend mode.

Solution: Before entering the suspend mode, the fan still operates in full speed to lower down the temperature of the system. When the system temperature reduces into normal condition then the fan will gradually slow down into its normal speed.

Contacting Your Dealer

If you still have a problem after reading the preceding sections, the next step is to contact your dealer. Your dealer can determine if the problem is something that requires the computer to be taken to the shop. Before you call your dealer, however, prepare the following information:

- How is your computer configured? Your dealer needs to know what peripheral devices you are using.
- What messages, if any, are on the screen?
- What software were you running at the time?
- What have you done already to try to solve the problem? If you have overlooked a step, your dealer may be able to solve the problem over the phone.

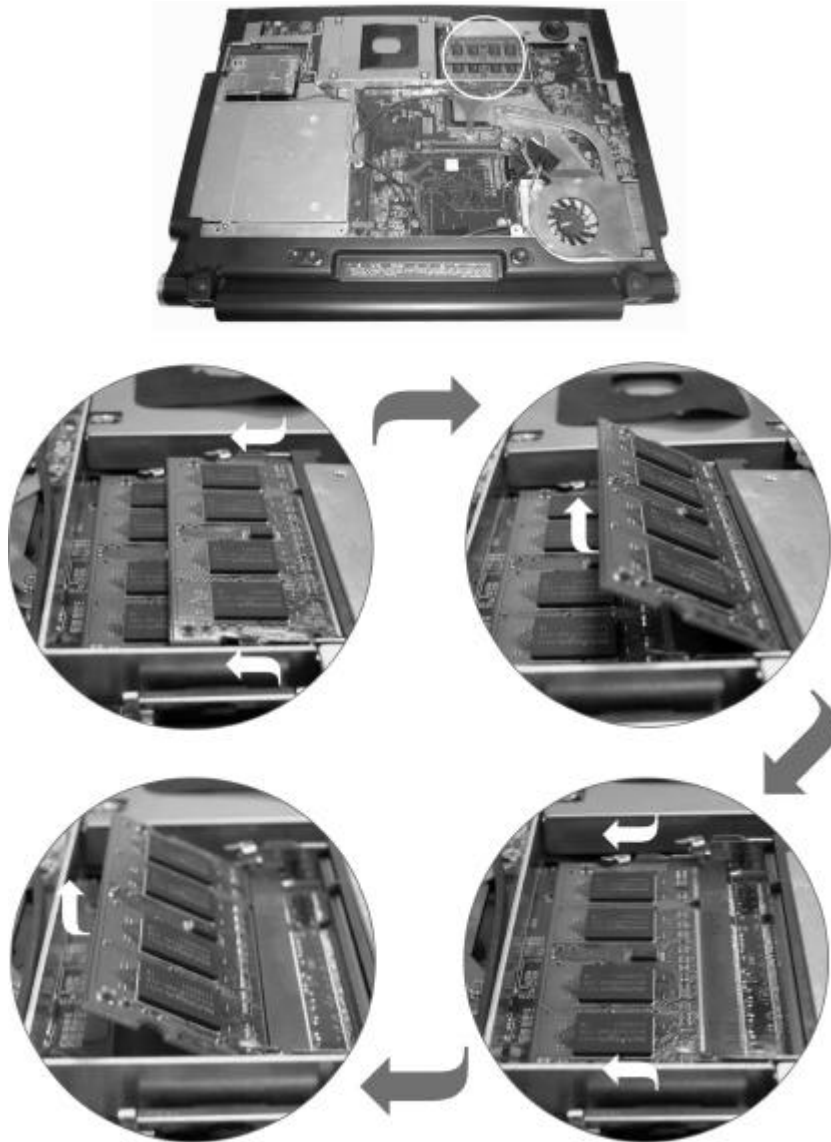
Page intentionally left blank

HOW DO I EXPAND MY NOTEBOOK

Turn off the computer; disconnect the AC adapter and all peripherals.
With your computer turning upside down, remove all the screws that are circled and shown on the illustration.



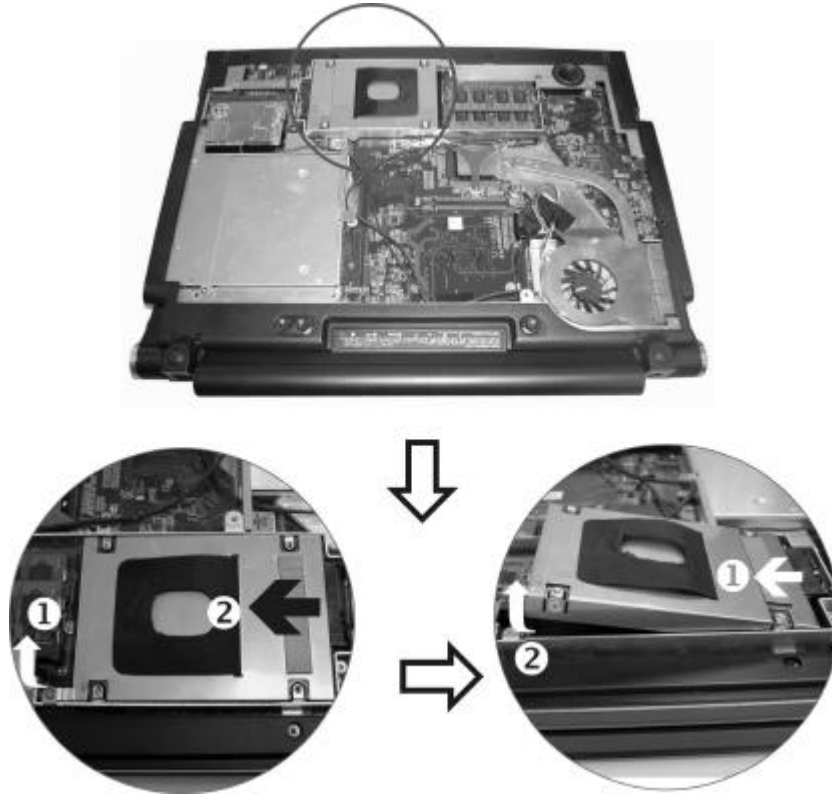
Upgrading your Memory



Easy to Upgrade HDD Module

The hard drive in your notebook computer is made to be easily swapped out for upgrading.

How to Remove your Hard Drive



Page intentionally left blank

SPECIFICATION

Detailed Notebook Specifications

Processor

- Intel® Yonah® with Single/Dual core, Celeron® (3rd Generation Mobile Microarchitecture, 2MB/1MB L2 cache, speed up to 2.33 GHz, 667/ 533MHz FSB)
- 478pin mFCPGA Package

Operating System Compliance

- Microsoft® Windows® XP Media Center Edition
- Microsoft® Windows® XP Professional Edition/ Microsoft®
- Windows® XP Home Edition

Core Logic

- Intel® 945PM/GM(Calisto) + ICH7-M

Memory

- Expansion 2 slots of 200pin SO-DIMM DDR2 module, expandable up to 2GB system memory
- Support DDR2 400/533/667 MHz module

LCD Display

- 15.4" WXGA (1280x800) TFT LCD display

Video & Graphics

- Graphic controller: NVIDIA® (G73/G72/G72-V, MXM-II) or ATI® (M56, M54, M52, MXM-II), PCI-Express X16 (changeable)
- External 64/128/256MB DDR VRAM on VGA board

Hard Drive

- 2.5" 9.5mm height, S-ATA

Optical Drive

- 5.25" 12.7 mm height Combo Drive (DVD-ROM + CD-RW), DVD Dual (DVD+/-RW), Super Multi (DVD-RAM+DVD+/-RW)

AV Feature

TV Tuner

- Mini PCI TV Tuner w/ Coaxial connector, support PAL, NTSC, SECAM

Built-in

Remote

- Multi-function remote control to enjoy TV program

Pointing Device

- Touchpad

Application Launch Key

- E-mail, Internet, WLAN, TV, DVD, Power

LED Status Indicator

- Power, Suspend/Resume, Battery Charging Status, Hard Disk Access, NumLock mode, CapsLock mode, ScrollLock mode

Keyboard

- 3.0mm travel, Inverted-T, 88 keys with Windows keys

PCMCIA

- One Type II PCMCIA slot (PCI-E card)

Camera (option)

- CMOS Camera, 1.3Mega Pixels

Accelerometer sensor

- HDD freefall protection & system alarm (option)

Ambient light sensor

- Change LCD backlight according to environment illumination

Audio

- Azalia, 5.1 channel SPDIF support
- Built-in two high quality stereo speakers

AC Adapter

- Input: 100-240V AC, 50-60Hz, 1.5A, Universal
- Output: 19V DC, 4.74A, 90W

Battery

- 8 cell battery

BIOS

- AMI, Support PnP, password ,Bootable from USB Disk/Optical device

Card Reader

- 4-in-1 Card Reader (SD/MS/MS Pro/MMC card)

Communication

- 10/100/1000 Intel Gigabit Ethernet on board
- Built-in MDC V.90 56Kbps Fax/Modem
- Intel®PRO/Wireless 3945ABG (802.11a/b/g) network connection (Mini card) (WM3945ABG)
- TV-Turner Mini-PCI interface, support PAL/NTSC/SECAM (optional)
- Web CAM with 1.3 Mega pixel resolution CMOS image (optional)

Power Management

- PC 2001 and ACPI compliance
- Support Stand-by, Suspend to Disk, Suspend to RAM, Smart Battery System support

Security

- Kensington Lock

Size

- 363 x 281 x 27/30 (mm)

Weight

- Approximately 3kg with panel, battery and Optical drive installed


Accessories

Packing Accessories

- Quick Guide, Support CD (Driver, Utility, Manual), AC Adapter, Power Cord, Battery Pack

Factory Option

- Intel®PRO/Wireless 3945ABG (802.11a/b/g) network connection (Mini card) (WM3945ABG)
- Optical Device: Combo Drive, DVD Dual, Super Multi
- Web CAM with 1.3 Mega pixel resolution CMOS image
- VGA MXM module changeable upon demand

 **IMPORTANT**

*Spec subject to change without notice
Battery life will vary depending on your specific hardware and
software configuration*