

# TA10CA1

## Quick Start Guide

### **Federal Communication Commission Interference Statement**

This device complies with Part 15 of the FCC Rules. Operation is subject to the following two conditions: (1) This device may not cause harmful interference, and (2) this device must accept any interference received, including interference that may cause undesired operation.

This equipment has been tested and found to comply with the limits for a Class B digital device, pursuant to Part 15 of the FCC Rules. These limits are designed to provide reasonable protection against harmful interference in a residential installation. This equipment generates, uses and can radiate radio frequency energy and, if not installed and used in accordance with the instructions, may cause harmful interference to radio communications. However, there is no guarantee that interference will not occur in a particular installation. If this equipment does cause harmful interference to radio or television reception, which can be determined by turning the equipment off and on, the user is encouraged to try to correct the interference by one of the following measures:

- Reorient or relocate the receiving antenna.
- Increase the separation between the equipment and receiver.
- Connect the equipment into an outlet on a circuit different from that to which the receiver is connected.

- Consult the dealer or an experienced radio/TV technician for help.

FCC Caution: Any changes or modifications not expressly approved by the party responsible for compliance could void the user's authority to operate this equipment.

This transmitter must not be co-located or operating in conjunction with any other antenna or transmitter.

### **FOR PORTABLE DEVICE USAGE**

#### **Radiation Exposure Statement:**

The product comply with the FCC portable RF exposure limit set forth for an uncontrolled environment and are safe for intended operation as described in this manual. The further RF exposure reduction can be achieved if the product can be kept as far as possible from the user body or set the device to lower output power if such function is available.

### **FOR COUNTRY CODE SELECTION USAGE**

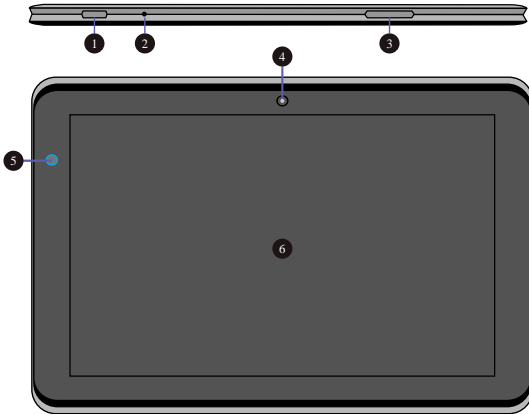
Note: The country code selection is for non-US model only and is not available to all US model. Per FCC regulation, all WiFi product marketed in US must fixed to US operation channels only.

## **Package contents**

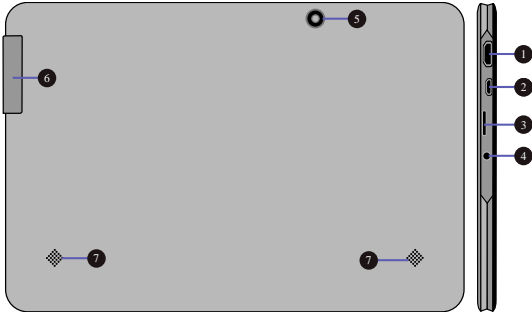
If any of the items is missing or damaged, please contact your dealer immediately:

- One Tablet
- One AC adapter
- One USB cable
- This guide

## Tablet layout



No.	Name	No.	Name
1	Power button	4	Front facing camera
2	Microphone	5	Light sensor
3	Volume up/ down	6	Touchscreen



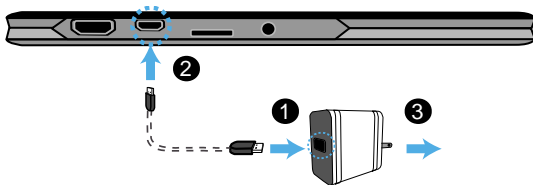
No.	Name	No.	Name
1	Mini HDMI port	5	Rear facing camera
2	Micro USB port	6	3G module slot
3	Micro SD card slot	7	Speaker
4	Headphone plug		

## Charging your tablet

If your tablet is just being unpacked from the box, you need to charge the tablet first. It will take around 6 to 7 hours to be fully charged.

First, take out the USB cable and the adapter provided with your tablet. And then:

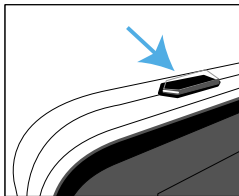
1. Plug the USB head of the cable into the adapter.
2. Plug the micro-USB head of the cable into the micro-USB port on your tablet.
3. Plug the adapter into a wall-socket.



## Powering ON/OFF your tablet

### To power on your tablet

Press and hold the power button down until the screen turn on.

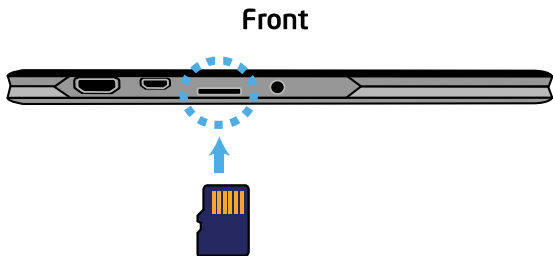


### To power off your tablet

1. Press and hold the power button until the power options menu appears on the screen.
2. Tap and choose OK from the menu.

## Inserting a storage card

Your tablet supports micro-SD cards with storage space ranging from 128M to 32G. You can insert the micro SD card and pull it out without powering down the tablet. To do so, follow the steps below.



### Install your Micro SD Card

1. Hold your tablet with front side up.
2. Insert your micro SD card in the direction as shown.

### Remove your Micro SD Card

1. Push and release the micro SD card. This will unlock the card.
2. Pull out the micro SD card.

## Specifications

<b>Processor</b>	<ul style="list-style-type: none"><li>● Intel Clovertrail+ Z2520</li></ul>
<b>Memory</b>	<ul style="list-style-type: none"><li>● 1 GB or 2 GB (optional) LPDDR2</li></ul>
<b>Storage</b>	<ul style="list-style-type: none"><li>● 16GB</li></ul>
<b>Wireless</b>	<ul style="list-style-type: none"><li>● WLAN, Bluetooth</li></ul>
<b>Display</b>	<ul style="list-style-type: none"><li>● 10.1-inch 1280x800 screen</li><li>● Support 10-point multi-touch</li></ul>
<b>Cameras</b>	<ul style="list-style-type: none"><li>● Front camera: 2.0 M</li><li>● Rear camera: 5.0M</li></ul>
<b>Battery</b>	<ul style="list-style-type: none"><li>● 3Cell, 1S3P</li><li>● Li-polymer</li><li>● 5100mAh</li><li>● TCL: TA10-1S5100-T1T2</li></ul>
<b>Input/Output</b>	<ul style="list-style-type: none"><li>● 1 x micro-USB 2.0, OTG port (Type A/B)</li><li>● 1 x Mic/head phone jack combo</li><li>● 1 x mini-HDMI 1.3a type C</li><li>● 1 x micro-SD card slot (128M-32G)</li><li>● 1 x Analog MIC</li></ul>
<b>Speaker &amp; Mic</b>	<ul style="list-style-type: none"><li>● Build-in Speaker x 2</li><li>● Internal Analog MIC x 1</li></ul>



<p><b>AC-Adapter</b></p>	<ul style="list-style-type: none"> <li>● DC Output: 5V/2A</li> <li>● Input Voltage: 100 ~ 240VAC</li> <li>● Input Frequency: 47 ~ 63Hz.</li> <li>● Chicony: W12-010N3A, W12-010N3B, W12-010N3C, W12-010N3D, W12-010N3E</li> <li>● ASIA POWER:</li> <li>● WB-10G05Fx(x=A,U,C,G,K,B)</li> </ul>
<p><b>Dimension (mm)</b></p>	<ul style="list-style-type: none"> <li>● 260 (W) x 175 (H) x 9.8 (D)</li> </ul>
<p><b>Weight</b></p>	<ul style="list-style-type: none"> <li>● 609 g (w/o adapter)</li> </ul>