

Quick Start Guide

For

TF10EA2

Federal Communication Commission Interference Statement

This equipment has been tested and found to comply with the limits for a Class B digital device, pursuant to Part 15 of the FCC Rules. These limits are designed to provide reasonable protection against harmful interference in a residential installation. This equipment generates, uses and can radiate radio frequency energy and, if not installed and used in accordance with the instructions, may cause harmful interference to radio communications. However, there is no guarantee that interference will not occur in a particular installation. If this equipment does cause harmful interference to radio or television reception, which can be determined by turning the equipment off and on, the user is encouraged to try to correct the interference by one of the following measures:

- Reorient or relocate the receiving antenna.
- Increase the separation between the equipment and receiver.
- Connect the equipment into an outlet on a circuit different from that to which the receiver is connected.
- Consult the dealer or an experienced radio/TV technician for help.

Caution:

Any changes or modifications not expressly approved by the party responsible for compliance could void the user's authority to operate this equipment.

This device complies with Part 15 of the FCC Rules. Operation is subject to the following two conditions:

- (1) This device may not cause harmful interference, and
- (2) This device must accept any interference received, including interference that may cause undesired operation

RF Exposure Information (SAR)

This device meets the government's requirements for exposure to radio waves. This device is designed and manufactured not to exceed the emission limits for exposure to radio frequency (RF) energy set by the Federal Communications Commission of the U.S. Government.

The exposure standard employs a unit of measurement known as the Specific Absorption Rate, or SAR. The SAR limit set by the FCC is 1.6 W/kg. Tests for SAR are conducted using standard operating positions accepted by the FCC with the EUT transmitting at the specified power level in different channels.

The highest SAR value for the device as reported to the FCC is 1.22 W/kg when placed next to the body.

CAUTION

Risk of explosion if battery is replaced by an incorrect type.
Dispose of used batteries according to the instructions.

ATTENTION

RISQUE D'EXPLOSION SI LA BATTERIE EST REMPLACÉE
PAR UN TYPE INCORRECT. RECYCLEZ LES BATTERIES
USAGÉES SELON LES INSTRUCTIONS.



To prevent possible hearing damage, do not listen at high volume levels for long periods.

Attention: Teachers, Parents and Adult Supervisors

This product is an educational tool designed for school children, ages 6 and up. There must be supervision by an adult on school children under 10 when using this tablet. It is a must to have a thorough explanation to students on safe and proper handling of the tablet, power supply, battery pack, and power cord.



Be sure to keep the power cord away from younger children

Please ensure that students understand the following:

- ▶▶ As with all electrical products, precautions should be observed during handling and use to prevent electric shock. The power supply (adapter) should not be handled by the children.”
- ▶▶ Emphasize to students that this device is an educational tool and not a toy. The computer, power supply, battery pack or power cord should not be dropped, crushed, stepped on or otherwise abused.
- ▶▶ Ensure students understand the safe and proper handling of power cord and power supply. Misuse could result in serious injury.
- ▶▶ The teacher, parent or adult supervisor should periodically inspect the computer; power supply and power cord for damage and replace it, if necessary.
- ▶▶ Students should report any damage or loose parts to their teacher, parents or adult supervisor, immediately.
- ▶▶ Do not leave the tablet plugged in or “on” when enclosed in a non-vented container, such as a school backpack, as overheating may occur.
- ▶▶ It is recommended that students should take a 5 minute break every 30 minutes of use.

Safety Precautions

The following are lists of precautionary measure the students must understand before using this computer inside the classroom or home environment:



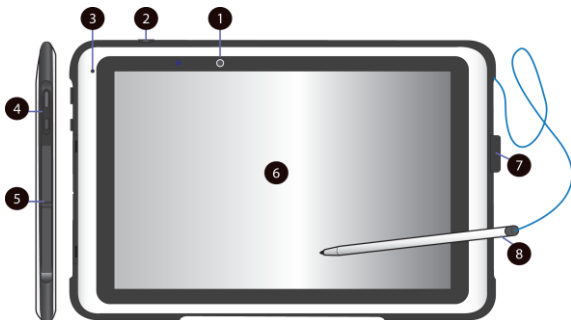
1. Do not place near the fire or other sources of heat.
2. Do not expose to magnetic fields.
3. Do not expose to direct sunlight.
4. Do not expose to rain or moisture.
5. Do not place heavy objects to add heavy pressure on the computer.
6. Do not drop the computer.

Package contents

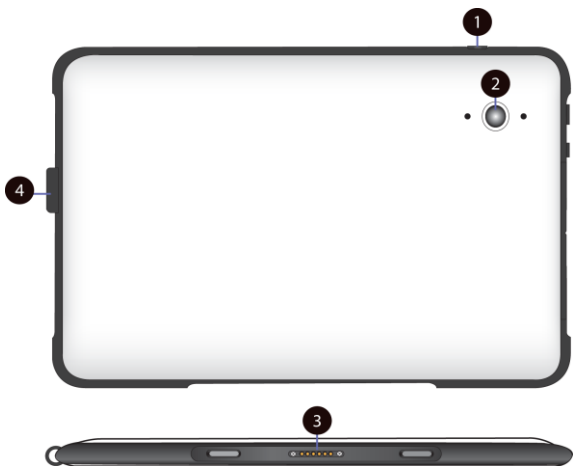
Carefully unpack your box and take out the items listed below. If any of the items are missing or damaged, please contact your dealer immediately:

- One tablet
- One keyboard docking
- One USB cable
- One AC adapter
- One stylus
- This guide

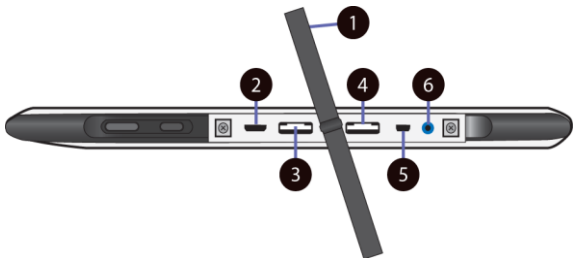
Tablet layout



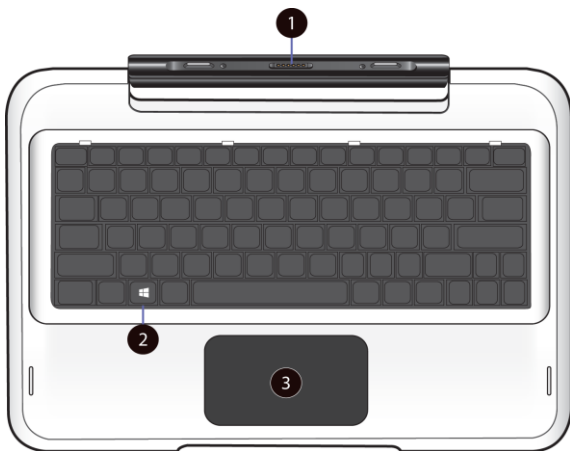
No.	Name	No.	Name
1	Front facing camera	5	Input/output cabinet (See page 7)
2	Power lock	6	Touchscreen
3	Microphone	7	Stylus holder
4	Volume up/down	8	Stylus



No.	Name	No.	Name
1	Power lock	3	Docking connector
2	Rear facing camera	4	Stylus holder



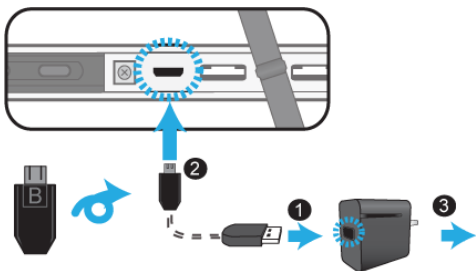
No.	Name	No.	Name
1	Rubber cover	4	Micro SIM card slot
2	Micro USB DC IN / Micro USB port	5	Micro HDMI port
3	Micro SD card slot	6	Headphone jack



No.	Name	No.	Name
1	Docking connector	3	Touchpad
2	Windows Key button		

Charging your tablet

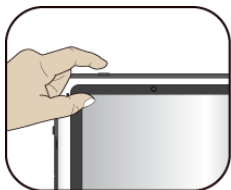
If your tablet is just being unpacked from the box, you need to charge the tablet first. It will take around 4 to 5 hours to be fully charged.



1. Plug the USB head of the cable into the adapter.
2. Plug the micro-USB head of the cable - *with the side marked with "B" or an icon facing down* - into the micro-USB port on your tablet.
3. Plug the adapter into a wall-socket.

Note: If the remaining power in your battery capacity is 90% or above, plugging the adapter will not fully charge your battery.

Powering ON/OFF your tablet



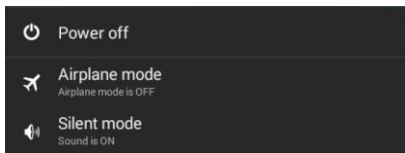
To power on your tablet

Press down the power button (normally 1 to 2 seconds) until you see the screen turn on.

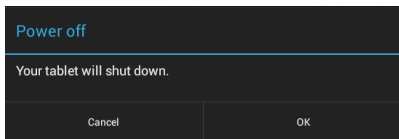
To power off your tablet

For Android, follow these steps:

1. Press and hold the Power Lock button.
2. The Power-off menu appears as shown below. Touch Power off.

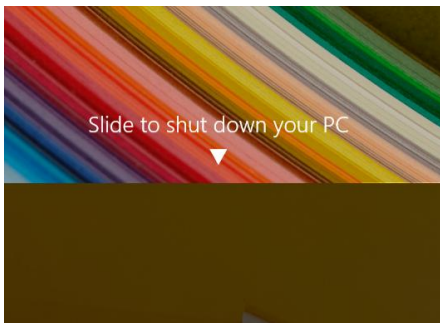


3. Touch OK to power down your tablet.



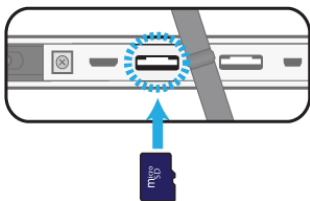
For Windows, follow these steps:

1. Press and hold the power button for at least four seconds, and you will see an instruction appears in the middle of the screen, which is as shown below.



2. Slide your finger on the screen downward, and the system will power off itself.

Inserting a storage card



Your tablet supports micro-SD cards with maximum storage space up to 32G. You can insert the micro SD card and pull it out without powering down the tablet. To do so, follow the steps below.

Install your Micro SD Card

1. Hold your tablet with front side up.
2. Insert your micro SD card in the direction as shown.

Remove your Micro SD Card

1. Push and release the micro SD card. This will unlock the card.
2. Pull out the micro SD card.

Specifications

Processor	<ul style="list-style-type: none">● Intel® Cherry Trail Type 3
Memory	<ul style="list-style-type: none">● DDR3LRS- 1600● 1 GB / 2GB
Storage	<ul style="list-style-type: none">● eMMC v4.5● 16/32 GB
Wireless	<ul style="list-style-type: none">● Wi-Fi 802.11 b/g/n● Bluetooth 4.0 + EDR
Touchscreen	<ul style="list-style-type: none">● 10.1-inch TFT LVDS● Resolution: 1280 x 800● 5- point touch
Cameras	<ul style="list-style-type: none">● Android: Front 0.3M + Rear 2.0M● Windows Front 1.26M + Rear 2.0M
Battery	<ul style="list-style-type: none">● Li-polymer● 6300mAh
Input/Output	<ul style="list-style-type: none">● 1 x Micro-USB 2.0 OTG port (Type B)● 1 x Micro HDMI port● 1 x Analog Mic/head combo jack● 1 x Micro-SD card slot● 1 x Micro SIM card slot

Speaker & Mic	<ul style="list-style-type: none">● Build-in Speaker x 2● Internal MIC x 1
AC-Adapter	<ul style="list-style-type: none">● DC Output: 10W/5V/2A● Input Voltage: 100 - 240VAC● Input Frequency: 47 - 63Hz
Dimension (mm)	<ul style="list-style-type: none">● 275 (W) x 180 (H) x 12.3 (D)
Weight	<ul style="list-style-type: none">● 795 g