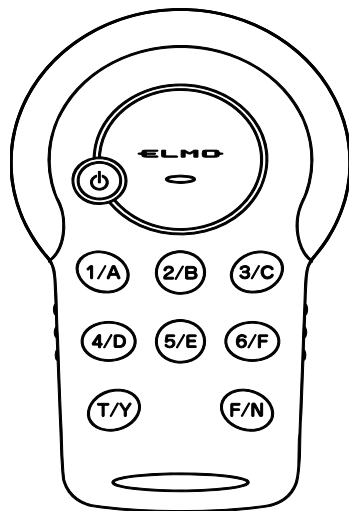


User's Guide

Student Response System CRV-CK-1



Read this User's Guide carefully before using the CRA-1 and CRV-CK-1.

Store this User's Guide in a safe place in case you need it again.

IMPORTANT SAFETY INSTRUCTIONS

- 1) Read these instructions.
- 2) Keep these instructions.
- 3) Heed all warnings.
- 4) Follow all instructions.
- 5) Do not use this apparatus near water.
- 6) Clean only with dry cloth.
- 7) Do not block any ventilation openings, Install in accordance with the manufacturer's instructions.
- 8) Do not install near any heat sources such as radiators, heat registers, stoves, or other apparatus (including amplifiers) that produce heat.
- 9) Do not defeat the safety purpose of the polarized or grounding-type plug. A polarized plug has two blades with one wider than the other. A grounding type plug has two blades and a third grounding prong. The wide blade or the third prong are provided for your safety. If the provided plug does not fit into your outlet, consult an electrician for replacement of the obsolete outlet.
- 10) Protect the power cord from being walked on or pinched particularly at

plugs, convenience receptacles, and the point where they exit from the apparatus.
11) Only use attachments/accessories specified by the manufacturer.

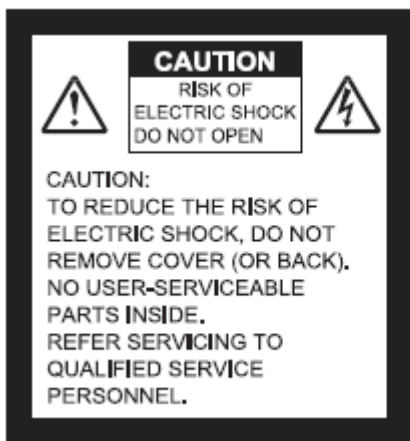
12) Use only with the cart, stand, tripod, bracket, or table specified by the manufacturer, or sold with the apparatus.



When a cart is used, use caution when moving the cart/apparatus combination to avoid injury from tip-over.

13) Unplug this apparatus during lightning storms or when unused for long periods of time.

14) Refer all servicing to qualified service personnel. Servicing is required when the apparatus has been damaged in any way, such as power-supply cord or plug is damaged, liquid has been spilled or objects have fallen into the apparatus, the apparatus has been exposed to rain or moisture, does not operate normally, or has been dropped.



SA 1965



SA 1966

The lightning flash with arrowhead symbol, within an equilateral triangle, is intended to alert the user to the presence of uninsulated "dangerous voltage" within the product's enclosure that may be of sufficient magnitude to constitute a risk of electric shock to persons. This marking is located at the bottom of product.

The exclamation point within an equilateral triangle is intended to alert the user to the presence of important operating and maintenance (servicing) instructions in the literature accompanying the product.

WARNING:
TO REDUCE THE RISK OF FIRE OR ELECTRIC SHOCK, DO NOT EXPOSE THIS PRODUCT TO RAIN OR MOISTURE.

WARNING: Handling the cord on this product or cords associated with accessories sold with this product, will expose you to lead, a chemical known to the State of California to cause birth defects or other reproductive harm. Wash hands after handling.

NOTICE:

This device complies with Part 15 of the FCC Rules and with RSS-210 of Industry Canada. Operation is subject to the following two conditions:

- (1) this device may not cause harmful interference, and
- (2) this device must accept any interference received, including interference that may cause undesired operation.

Changes or modifications made to this equipment not expressly approved by (manufacturer name) may void the FCC authorization to operate this equipment.

This equipment has been tested and found to comply with the limits for a Class B digital device, pursuant to Part 15 of the FCC Rules. These limits are designed to provide reasonable protection against harmful interference in a residential installation. This equipment generates, uses and can radiate radio frequency energy and, if not installed and used in accordance with the instructions, may cause harmful interference to radio communications. However, there is no guarantee that interference will not occur in a particular installation. If this equipment does cause harmful interference to radio or television reception, which can be determined by turning the equipment off and on, the user is encouraged to try to correct the interference by one or more of the following measures:

- Reorient or relocate the receiving antenna.
- Increase the separation between the equipment and receiver.
- Connect the equipment into an outlet on a circuit different from that to which the receiver is connected.
- Consult the dealer or an experienced radio/TV technician for help.

Radiofrequency radiation exposure Information:

The radiated output power of the device is far below the FCC radio frequency exposure limits. Nevertheless, the device shall be used in such a manner that the potential for human contact during normal operation is minimized.

Contents

Before Use	5
Main Functions	6
Supplied Items.....	7
Part Names	9
Preparations	10
Inserting and Charging the Battery Pack.....	10
Inserting the Battery into the Pen	12
Installing the Tablet and SRS Software (Image Mate Accent)	13
Basic Tablet Operations.....	15
Basic Pen Operations	15
Basic Screen Configuration.....	16
Connections	17
Using in a Lesson	18
SRS Mode	19
Operation	19
Tablet functions	23
Clicker functions.....	24
Various Settings	25
Setting Mode	26
Tablet Status Display.....	27
Setting the Pen.....	28
Other Functions	29
Replacing the Pen Tip	29
Storing the Wireless Adapter and Pen.....	29
About the LEDs of Tablet.....	30
Setting the Pen Writing Style	31
Wireless Communication Settings for the Tablet.....	34
Troubleshooting	35
Product Specifications	38
Product Specifications	38
System Requirements	40
About the Separately Sold Accessories.....	41
Usage Precautions	41
Disclaimer.....	43
About Trademarks	43
About the Warranty.....	44

Before Use

Thank you very much for purchasing this product.

Please read this manual carefully to make suitable use of the SRS. Also, please be sure to refer to any supplemental information included with this product.



Please note that screens and figures used in this manual may differ from the actual views.

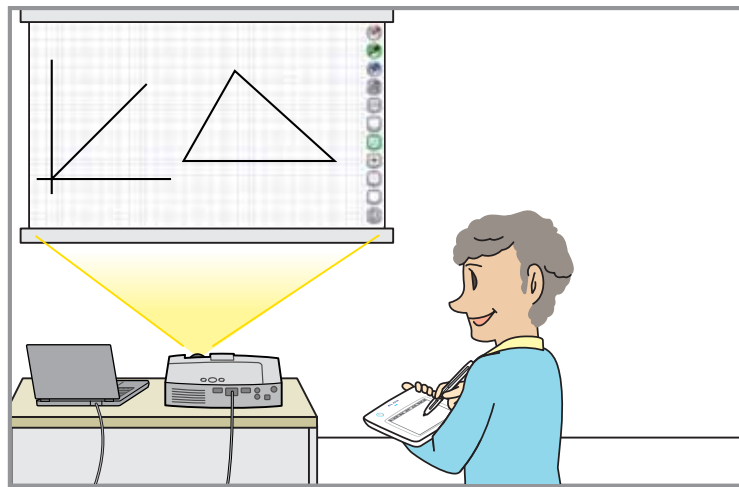
Main Functions

This product (SRS··· Student Response System) is an educational tool that makes lessons using ELMO's tablet and clickers more enjoyable and easier to understand.

The SRS has several key features for teaching more effective lessons.

■ Know an understanding level of the class

Students respond to questions and quizzes using their clicker with the results automatically tallied, summarized and visually displayed in a pie chart or bar graph

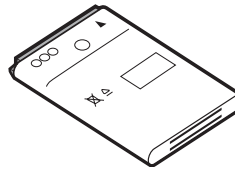


Supplied Items

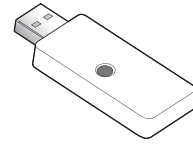
The package of this product contains the following items. Contact your dealer if any of the following items are not included in the package you purchased.



Tablet



Battery pack
for the tablet
(Lithium-ion battery)
(For the tablet)



Wireless
adapter



Pen



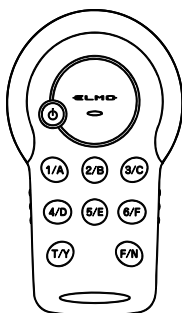
Dry cell AAA
battery
(For the pen)



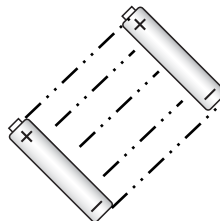
Tweezers for
replacing a core
(For the pen)



Extra core ×3
(For the pen)



CRV-CK-1



AAA battery



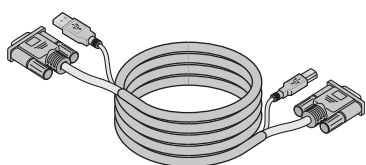
Screw driver
(For clicker's rear cover)



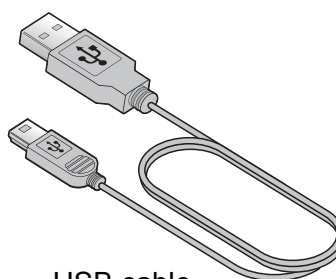
Carrying case



Seal clicker no.



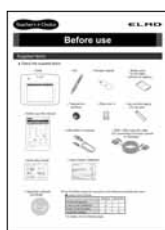
RGB / USB composite cable
(For connecting Document Camera
to computer)



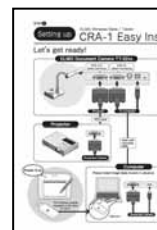
USB cable
for charging



Application software
(CD-ROM)

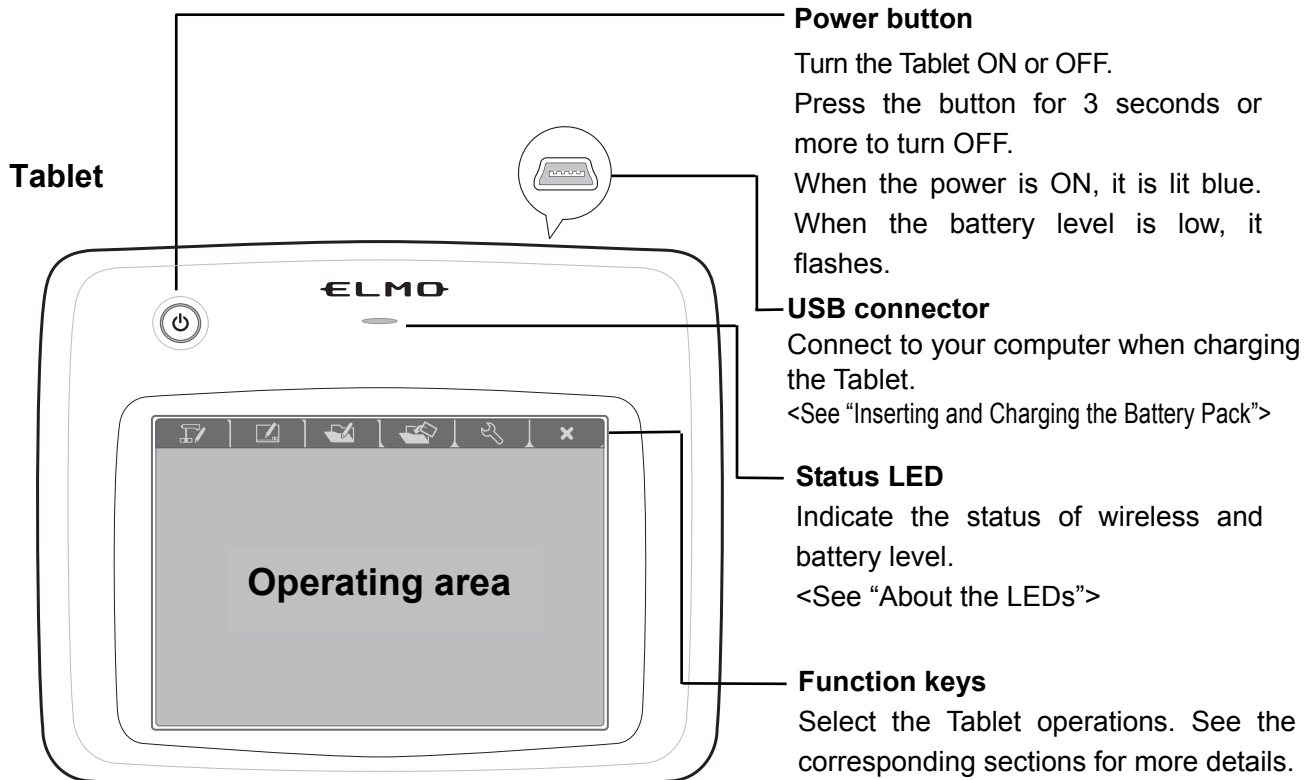


Before use

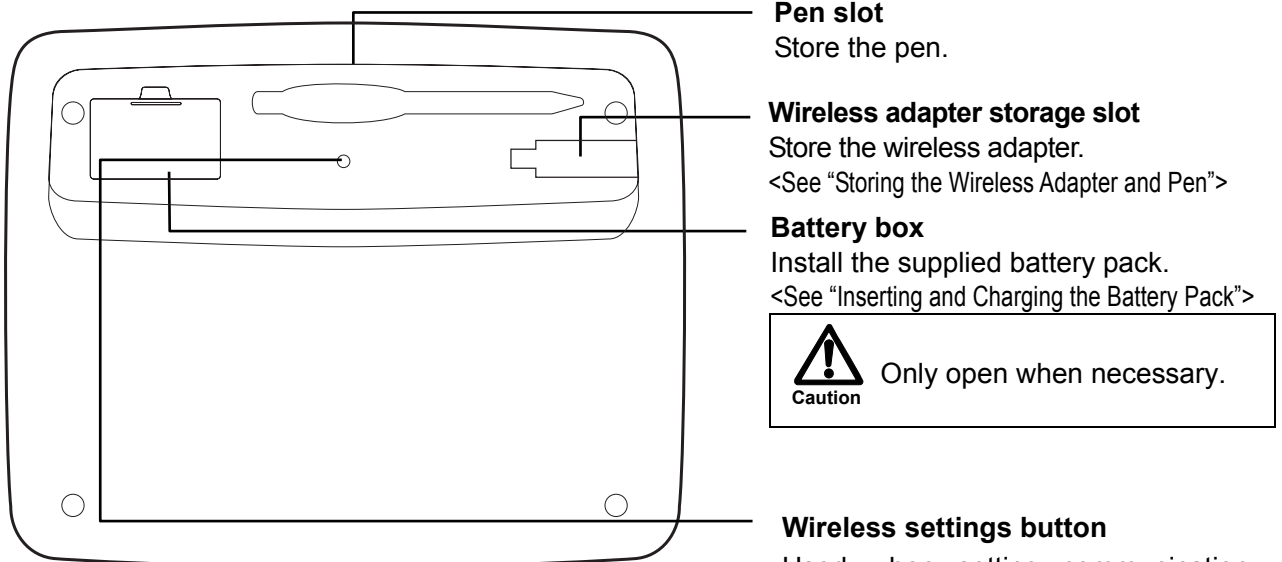


Quick start guide

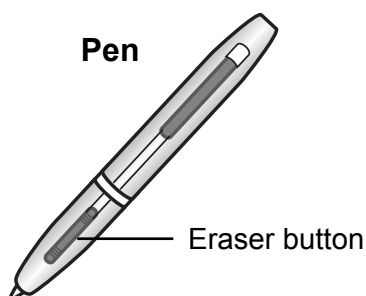
Part Names



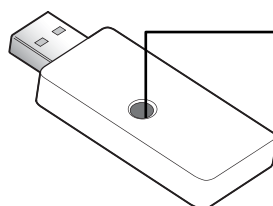
Tablet underside

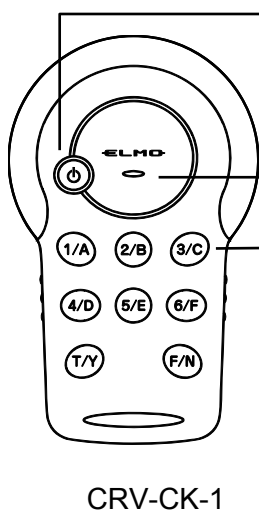


Caution Only open when necessary.



Wireless adapter





Power button

Turn the Clicker ON or OFF.
Press the button for 3 seconds or more to turn OFF.
When the power is ON, it is lit blue.
When the battery level is low, it flashes.

Status LED

Indicate the status of wireless and battery level.

Answer Buttons

Select the answer.

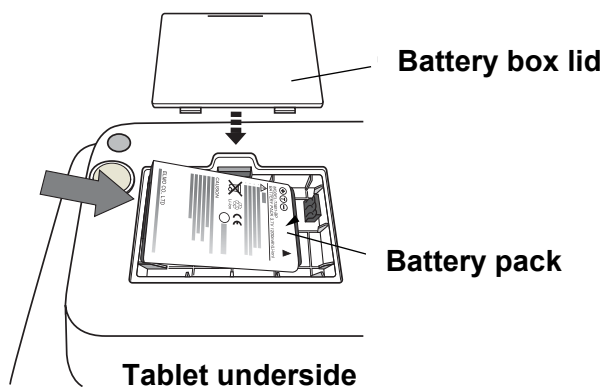
Preparations

Inserting and Charging the Battery Pack

Before use, insert the battery pack and check whether it is charged.

1 Insert the battery pack in the tablet.

Insert the supplied battery pack in the battery box on the underside of the tablet.



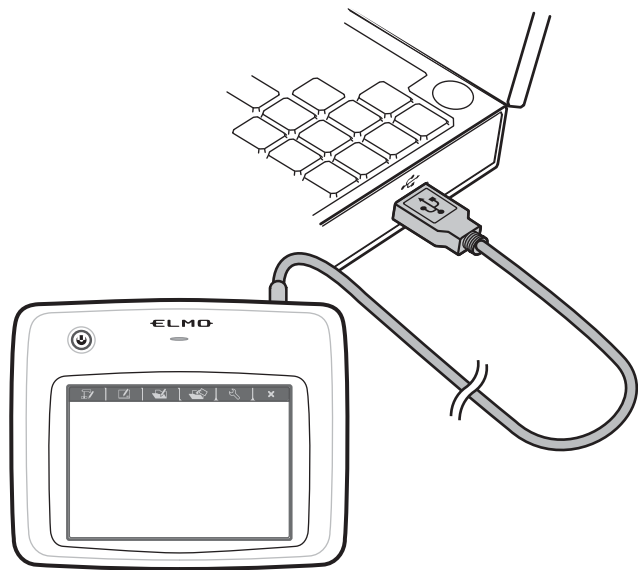
- Insert the battery pack in the correct direction.
- Only open the battery box when necessary.

2 Connect the computer and the tablet with the USB cable for charging.

When charging starts, the "Status LED" in the center of the tablet is lit.

When charging is complete, the "Status LED" turns off.

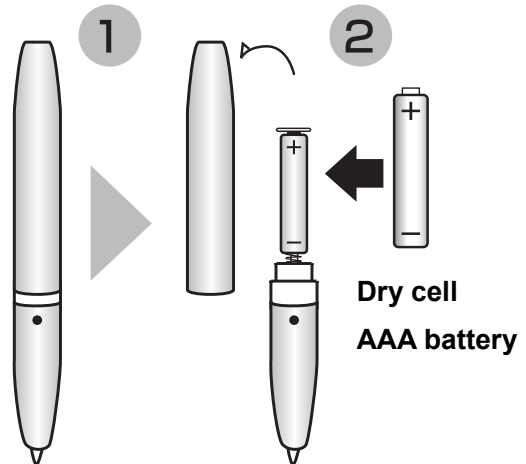
Charging time: Approx. 4 hours



- Disconnect the USB cable from the tablet when charging is complete.
- When using the Tablet, make sure that the USB cable is removed.

Inserting the Battery into the Pen

Insert the dry cell battery in the pen before use.



Caution

- Make sure that the polarity (+/-) of the dry cell battery is correct.
- Remove the dry cell battery if the pen will not be used for a long time.
- Do not recharge or short-circuit the dry cell battery.
- Use an AAA alkali dry cell battery. Do not use a rechargeable battery (such as Ni-Cd).
- The supplied dry cell battery is for an initial operation check. Its operating life is not guaranteed.

<Battery replacement period>

When the dry cell battery level is low, the operability may deteriorate.



Caution

- Be careful when you remove the pen cap. The dry cell battery may pop out.
- Replace the dry cell battery at least once a year.

Installing the Tablet and SRS Software (Image Mate Accent)

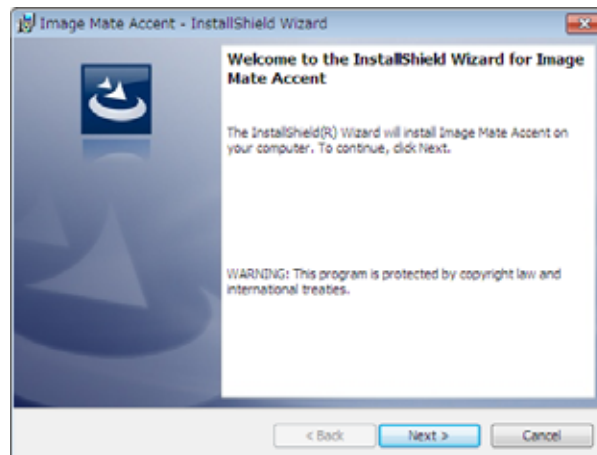
The Tablet and SRS software (Image Mate Accent) is used to perform operations such as the basic drawing operations and need to be installed before you use the Tablet and SRS. Install the Tablet and SRS software (Image Mate Accent) by following the procedure described below.

The installation is required only one time for each computer when it is used with the Tablet and SRS for the first time. (This procedure is not required every time you use the Tablet and SRS.)

■ Installation

- Click IMAccSRS_setup_1.04.2335_release.exe
- Select "English" from the menu.

Follow the on-screen instructions to install.

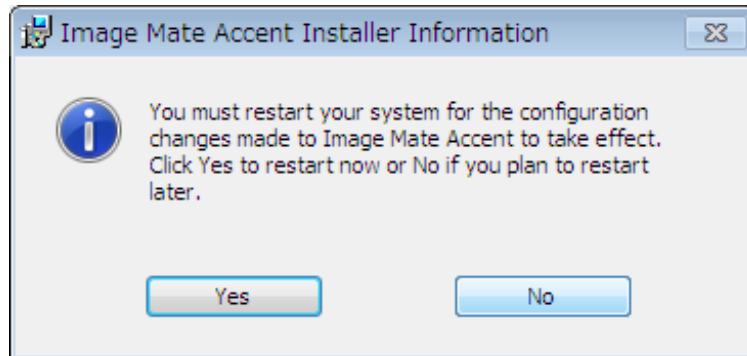


When installation is complete, the "SRS DEMO" icon  is displayed on the desktop.



Depending on your computer, restart computer message may appear.

If the restart computer message is displayed, press the "Yes" button to restart the computer.




When the computer restarts, the "Image Mate Accent" icon is displayed on the desktop.

UnZip IMAccSRS_1.04.2335_release_diff.zip

Drag and Drop the 3 files from "IMAccSRS_1.04.2335_release_diff " folder into the "C:¥Program Files¥ELMO¥Image Mate accent " folder to update below files,

- Image_Mate_Accent.exe
- SrsDaemon.exe
- SRSSManager.dll

Click the "SRS DEMO" icon  is displayed on the desktop to start.

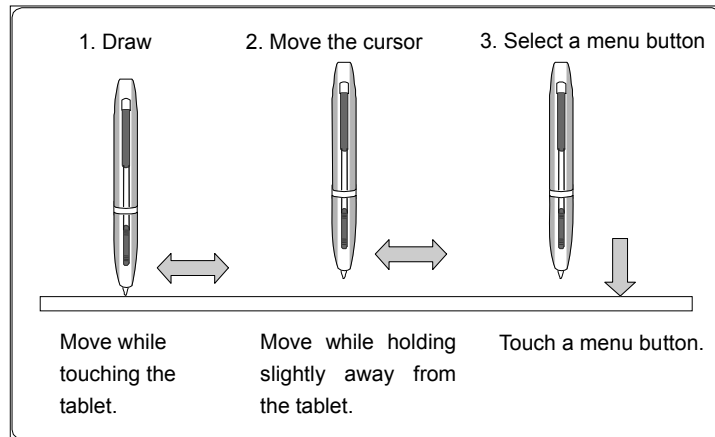
■ Uninstallation

To remove the Tablet software (Image Mate Accent) from your computer, use your operating system's uninstallation function.

Basic Tablet Operations



This section describes the basic Tablet operations, and the operation names.

Basic Pen Operations



■ Dragging (To draw or delete)

Move the pen while touching the tablet.

When  or  is selected, a line is drawn according to the pen movement.



■ Cursor movement (To move the cursor)

Move the pen while holding it slightly away from the tablet.

The cursor on the screen moves according to the pen movement.



■ Touching (To select a menu button)

Move the cursor while holding the pen slightly away from the tablet, and touch the tablet within the operating area.

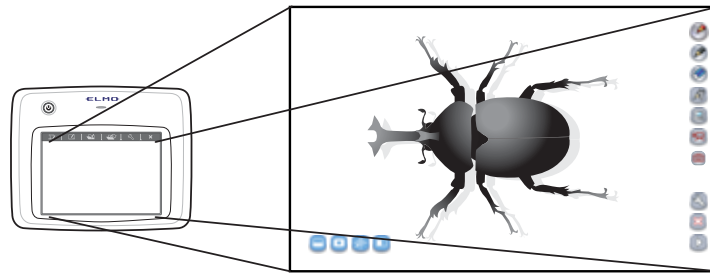


Do not apply excessive strength when touching the tablet with the pen.



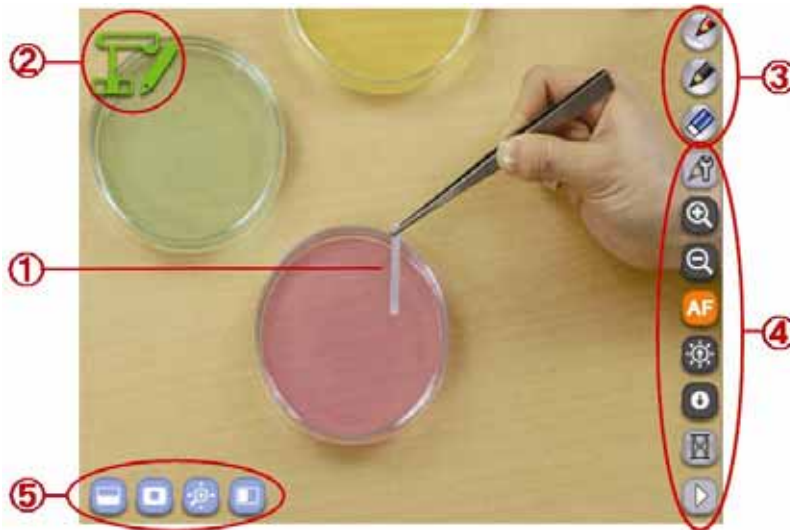
- If the pen is used at an acute angle, the pen position may not be recognized correctly. Use the pen at a perpendicular angle as much as possible.
- If the pen is not used for a while, it automatically enters the power-saving mode. To reactivate the pen, touch the pen tip once.

The tablet's operating area corresponds to the entire screen.



Basic Screen Configuration


This section describes the basic configuration of the screen that is displayed when using the Tablet.



Startup screen of the Tablet software (Image Mate Accent)

Drawing area	This area is for displaying the Document Camera image and drawing. The entire monitor is the drawing area.
Status display area	The current operation is indicated with an icon.
Drawing menu area	You can select the pen to use for drawing, or delete all drawings.
Menu area	These buttons are for configuration or operation of the Document Camera.
Sub menu area	These buttons are for using various expanded functions. These buttons vary according to the mode that is used.



Touch  in the menu area to go to the next menu.

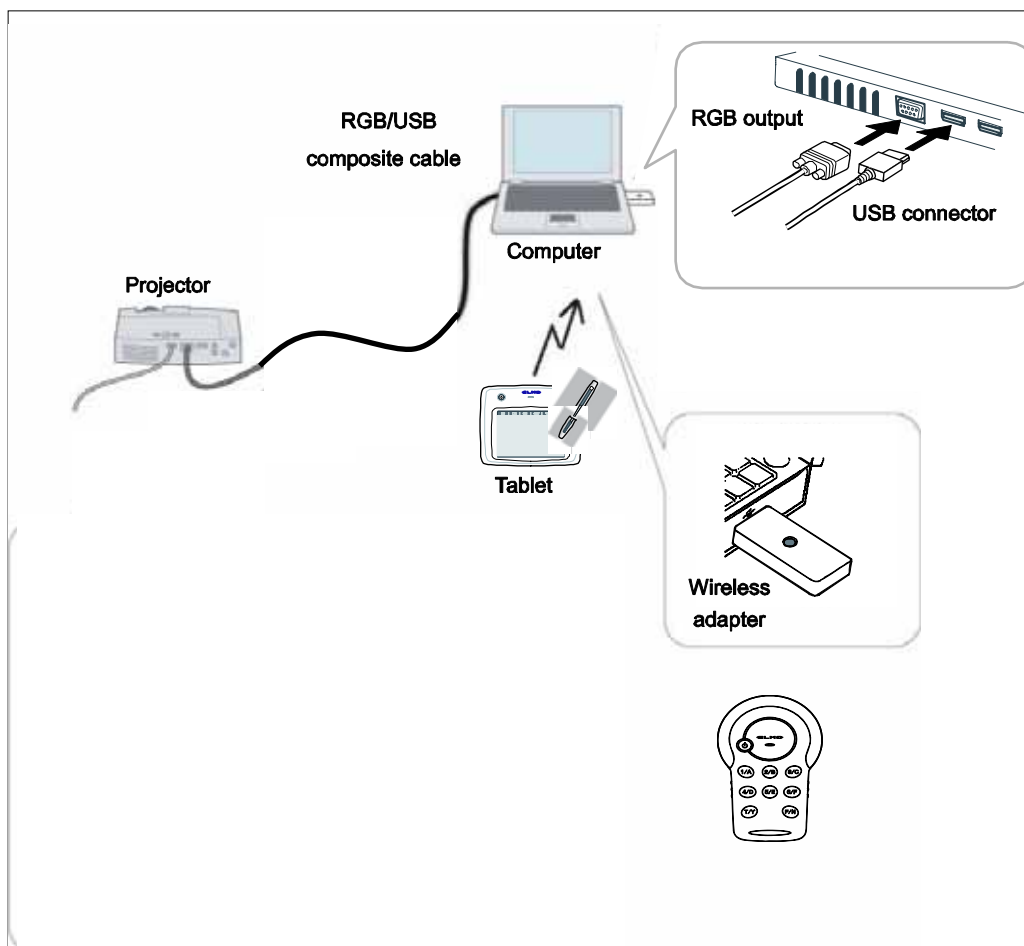
Connections

This section shows an example of the connection of the Tablet with other devices.

■ Items to prepare

Tablet, and supplied items	Items sold separately
<ul style="list-style-type: none">• Tablet(CRA-1)• Clicker(CRV-CK-1)• Wireless adapter(CRA-1R)• RGB/USB composite cable	<ul style="list-style-type: none">• Computer• Projector• RGB cable

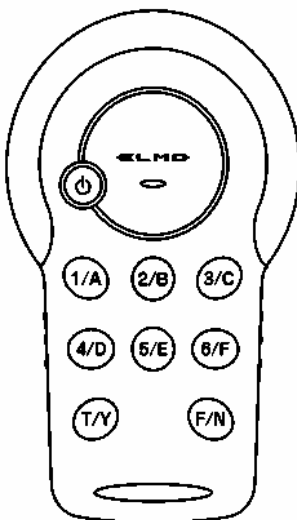
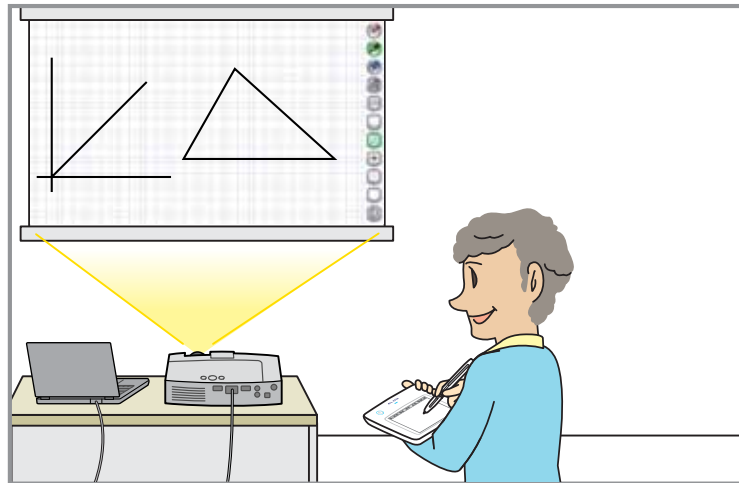
1 Connect the devices as shown in the figure.



For more details about the installation and the operation of the separately sold items such as a projector, refer to the User's Guide of each device.

Using in a Lesson

This section shows how to use the Tablet and Clicker in an actual lesson.

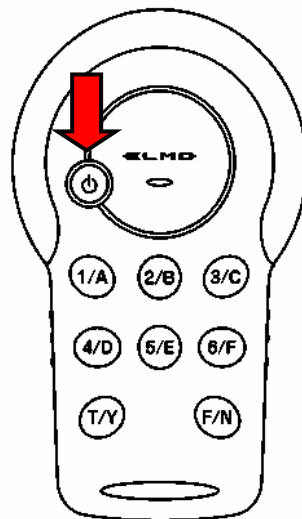


SRS Mode

In SRS mode, you can answer the questions or vote by the clicker, You can display the result of Answer or vote.

Operation

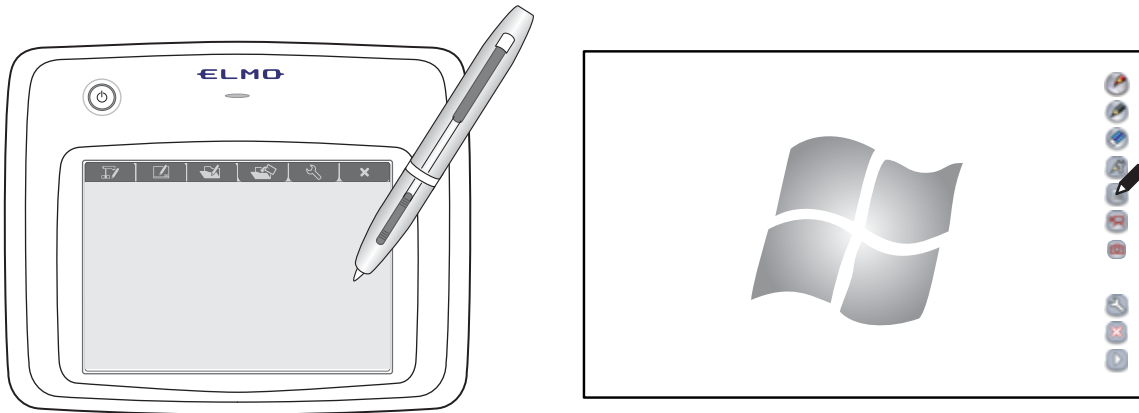
- 1 Touch the function key  on the tablet.
- 2 Turn on the clicker.



When a PC and the communication of the clicker establish it, the status LED of the clicker turns off, and the number of the current clickers is displayed by a PC.

Ask a question

- 1 Display the question to a screen.



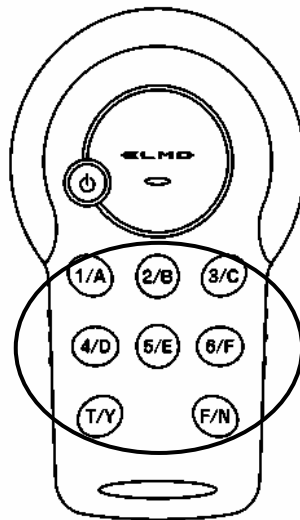
- 2 Start the answer acceptance from a clicker.

The question starts with  button.



3 Reply the answer with the button of the clicker.

Select from 1 to 4 button and push. The button which was chosen light in orange.



4 Stop the answer acceptance with  button on tablet

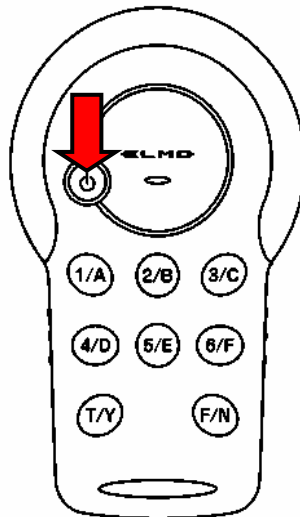
The button light in green.

5 Finish a question with  button.

The indication of a screen and the clicker is erased and can ask a new question.

Finish SRS mode




1 Press the POWER button for 3 seconds or more to turn OFF.



It is turned off the light power supply LED when cut off.



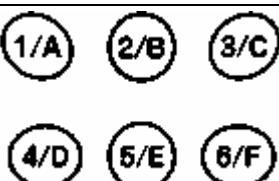

2 Touch the function key  on the tablet

Tablet functions

Button	
	An answer receptionist start
	The end of an answer and the vote
	Clear

Clicker functions

Answer and vote with the button

Button	Name	
	Power Button Power LED	Turn the Clicker ON or OFF. Press the button for 3 seconds or more to turn OFF. When the power is ON, it is lit blue. When the battery level is low, it flashes.
	Status LED	Show the communication state
	1/A ~ 6/F answer button	Choose an answer
	T/F, Y/N answer button	Choose an answer





Various Settings

This section describes how to configure the settings for Tablet operations.



This section describes the setting mode.

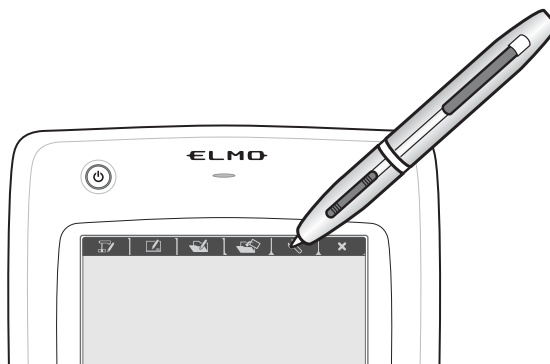


Mode	Function key	Description
Setting mode	 	To configure the settings for Tablet operations. You can also display the version or status of connected devices.
Quit	 	Quit the Tablet software (Image Mate Accent).

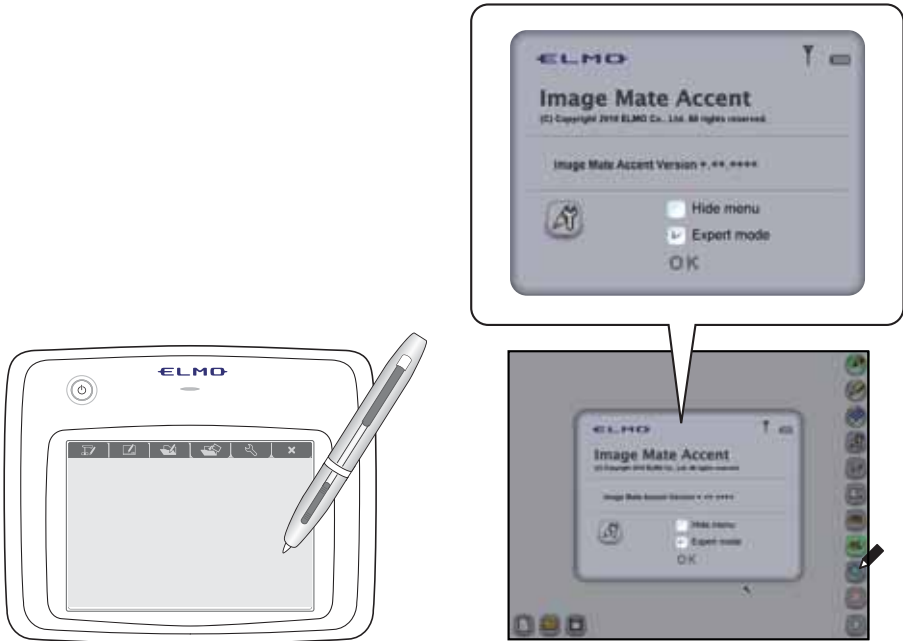
Setting Mode




In setting mode, you can configure the settings for Tablet operations.

Touch the  function key on the tablet.



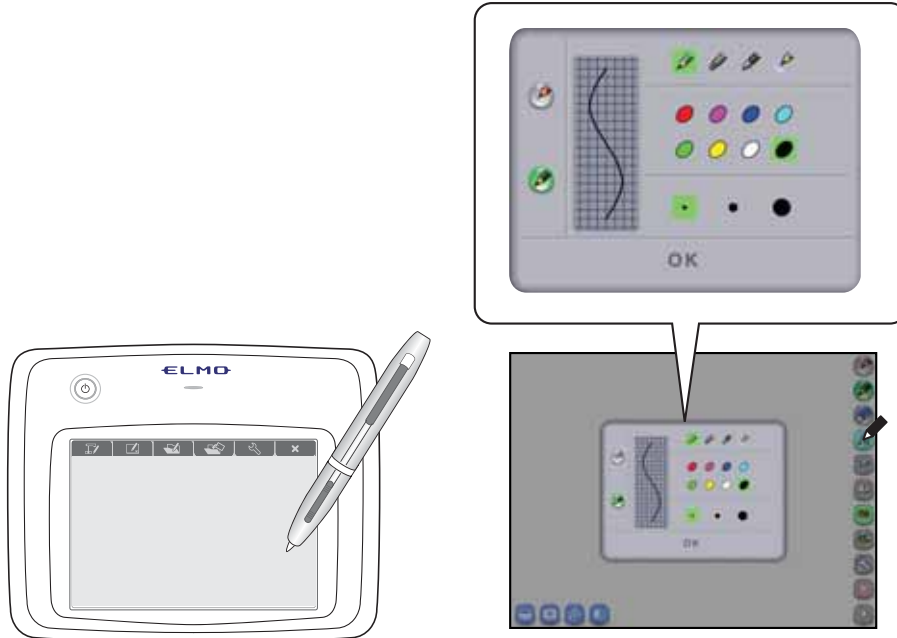
Tablet Status Display













Version display	To display the version of the Tablet software (Image Mate Accent), the version of the Tablet, and the version of the wireless adapter.
 Electric wave strength	To display the electric wave strength of the Tablet and wireless adapter. When the electric wave strength is low, correct operation may not be possible.
 Battery level	To display the battery level of the battery pack. When the battery level is low, charge it.
 Pen settings	To display the settings for pen 1 and pen 2. See "Setting the Pen" for more details.
Hide menus	To hide the menus and sub menus that are normally displayed. Select this check box when you want to use a larger area on the screen.
Expert mode	When expert mode is selected, the number of items displayed in the menu increases, and the highlighted area in the highlight function can be changed. Select this check box to enter expert mode.

Setting the Pen

1 Touch  to display the pen settings.



 /  Pen 1/pen 2	To select the pen that you want to configure .									
 /  /  /  Pencil/marker/fountain pen/ straight line pen	To select a type for the selected pen. <table border="1" data-bbox="659 1205 1369 1783"> <tr> <td data-bbox="659 1205 834 1294">Pencil</td> <td data-bbox="834 1205 1369 1294">Draw lines with the set thickness regardless of the pen pressure.</td> </tr> <tr> <td data-bbox="659 1294 834 1518">Marker</td> <td data-bbox="834 1294 1369 1518">Draw lines with the set thickness regardless of the pen pressure. The colors are displayed semi-transparently. Automatically converts a handwritten line into a straight line. (Straight line correction function)</td> </tr> <tr> <td data-bbox="659 1518 834 1608">Fountain pen</td> <td data-bbox="834 1518 1369 1608">Change the thickness according to the pen pressure.</td> </tr> <tr> <td data-bbox="659 1608 834 1783">Straight line pen</td> <td data-bbox="834 1608 1369 1783">Draw lines with the set thickness regardless of the pen pressure. Automatically converts a handwritten line into a straight line. (Straight line correction function)</td> </tr> </table>		Pencil	Draw lines with the set thickness regardless of the pen pressure.	Marker	Draw lines with the set thickness regardless of the pen pressure. The colors are displayed semi-transparently. Automatically converts a handwritten line into a straight line. (Straight line correction function)	Fountain pen	Change the thickness according to the pen pressure.	Straight line pen	Draw lines with the set thickness regardless of the pen pressure. Automatically converts a handwritten line into a straight line. (Straight line correction function)
Pencil	Draw lines with the set thickness regardless of the pen pressure.									
Marker	Draw lines with the set thickness regardless of the pen pressure. The colors are displayed semi-transparently. Automatically converts a handwritten line into a straight line. (Straight line correction function)									
Fountain pen	Change the thickness according to the pen pressure.									
Straight line pen	Draw lines with the set thickness regardless of the pen pressure. Automatically converts a handwritten line into a straight line. (Straight line correction function)									
 Color button	To configure the color for the selected pen.									
 /  /  Thickness	To configure the thickness for the selected pen.									

2 Select the pen type, color and pen thickness for pen 1 or pen 2, and then touch OK.

Other Functions

This section describes various functions related to the Tablet.

Replacing the Pen Tip

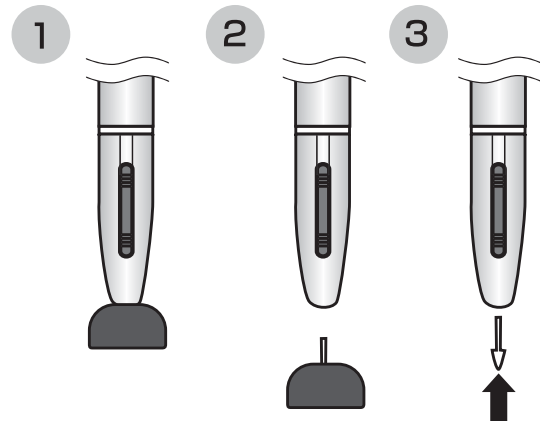
When the pen tip becomes round, replace it with the supplied extra core.

Use the supplied extra core replacement tweezers when replacing the pen tip.



Caution

When replacing the pen tip, be sure to replace it with an extra core that was supplied with the product. Make sure that children do not put small parts into their mouths.

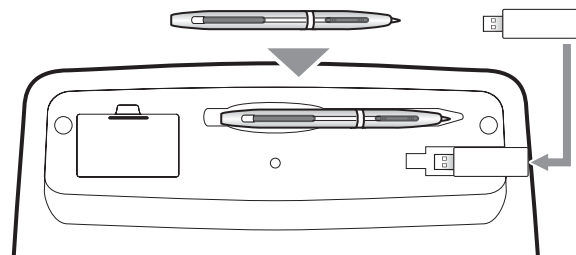


Storing the Wireless Adapter and Pen

You can store the pen and wireless adapter in the tablet.

Store the wireless adapter with the wireless settings button on the tablet side.

The falling prevention lock is applied.



Tablet underside



Caution

When storing the wireless adapter, make sure it is securely stored in the tablet, and be careful not to drop it while carrying it around.

About the LEDs of Tablet

The power button LED and status LED on the tablet and the wireless settings button LED on the wireless adapter indicate the status of the devices.

■ Power LED

LED status	Operation
Off	Power is OFF. Press the power button to turn the power ON.
Lit	Power is ON. Press the power button for 3 seconds to turn the power OFF.
Flashing	The battery level of the battery pack is too low. Charge the battery.

■ Status LED

LED status	Operation
Off	When the power is ON, communication with the wireless adapter is being performed correctly.
High-speed flashing (Turns ON and OFF every 0.5 seconds)	The wireless settings button is pressed.
Flashing (Turns ON and OFF every 1 second)	Cannot communicate with the wireless adapter. See "Wireless Communication Settings for the Tablet".
Lit	Charging.

■ Wireless settings button (LED)

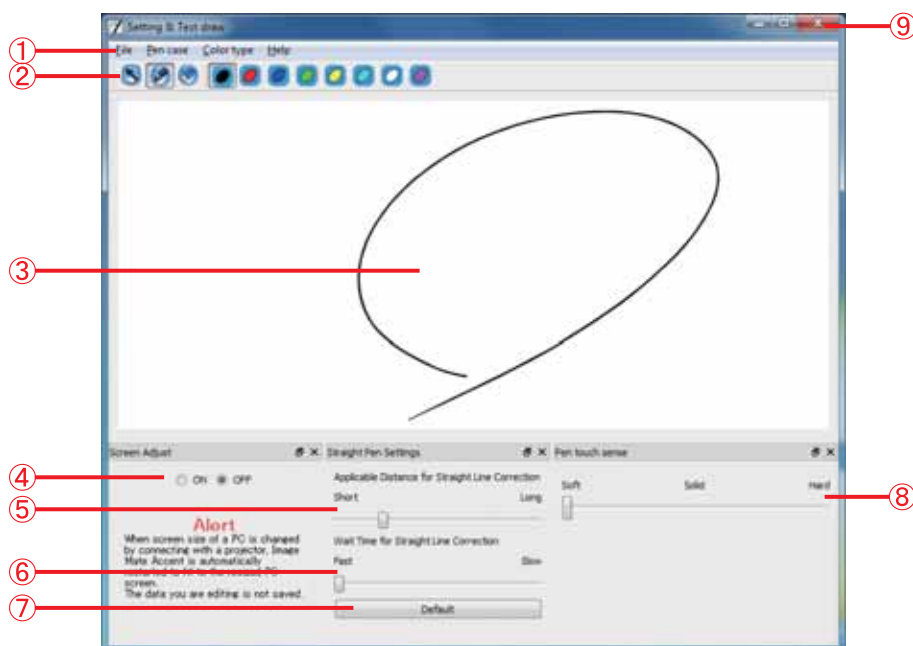
LED status	Operation
Off	The computer is not turned ON. Or when the power is ON, communication with the Tablet is being performed correctly.
High-speed flashing	The wireless settings button for the wireless adapter is pressed.
Flashing	Cannot communicate with the Tablet. See "Wireless Communication Settings for the Tablet".

Setting the Pen Writing Style


- 1 Double-click the "Image Mate Accent Driver" icon that is displayed on the taskbar.
Select "Settings and Test Drawing" in the menu.



- 2 The Image Mate Accent Driver settings and test drawing screen is displayed.



Menu	To configure settings for drawings or perform operations.
Drawing settings	Use the eraser button to delete the entire drawing area. Use the color buttons to change the color of the pen.
Drawing area	This is a test drawing area for checking the pen touch sensitivity.
Screen adjust	To configure whether or not to forcibly restart the Tablet software (Image Mate Accent) when the size of the computer screen is changed. When ON is set, the Tablet software is restarted when the size of the computer screen is changed; for example, when connecting to a projector.
Applicable distance for direct line correction	To configure the line length at which to perform straight line correction. When the line length reaches the set value or longer, straight line correction is performed.
Waiting time for direct line correction	To configure the time until converting to a straight line. When the elapsed time after drawing reaches the set value or longer, straight line correction is performed. If you start to draw again within the set time, straight line correction is not performed. If straight line correction is performed while you are writing text, make this setting longer.

	Default	To return " Applicable distance for direct line correction" and " Waiting time for direct line correction" to their initial values.
	Pen touch sensitivity	<p>To configure the pen pressure sensitivity on the tablet. The firmer you set this setting, the more pressure you will have to apply on the surface of the tablet to draw a line.</p> <p>Configure this setting firmer if the cursor movements cause unintentional drawing or operations..</p> <div style="border: 1px solid black; padding: 5px; margin: 10px auto; width: fit-content;">  <p>After changing the pen touch sensitivity, move the pen away from the tablet and wait for about one second.</p> </div>
	Close button	To close the settings and test drawing screen.

 **Note**

- The pen touch sensitivity is only displayed when the Tablet are connected.

Wireless Communication Settings for the Tablet

If the "Status LED" flashes and communication is not performed when you press the power button, use the "Wireless settings buttons" on the tablet underside and wireless adapter to perform the wireless settings.

Turn ON the tablet's power, and press the "Wireless settings button" on the underside.



The "Status LED" flashes at high speed.

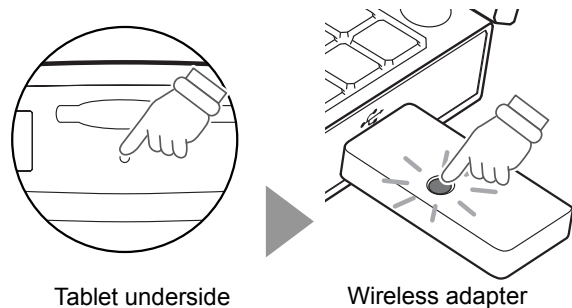


Press the "Wireless settings button" on the wireless adapter.



The "Status LED" on the tablet turns off for a few seconds.

When the "Status LED" turns off, the Tablet and wireless adapter can communicate, and the Tablet can be used.



Caution

Perform the wireless setting within 30 seconds of pressing the "Wireless settings button" on the underside of the tablet.

Press the "Wireless settings button" while supporting the body of the wireless adapter.



Caution

Communication with the wireless adapter may become unstable if the Tablet is used as follows.

- There is an obstruction between the Tablet and wireless adapter.
- The Tablet is placed on top of a computer.
- A wireless device or electronic equipment is being used nearby.
- The Tablet is moved quickly while being used.


Also, due to the inherent characteristics of wireless communication, the communication may become unstable depending on the position of the Tablet and the wireless adapter.

Troubleshooting

If trouble occurs or you have any queries, first check this section.

If the problem persists, check your warranty and contact the dealer where you purchased the product.

Tablet power does not turn ON	
Is the battery pack inserted?	Check that the battery pack is inserted correctly.
Is the battery pack charged?	Refer to "Inserting and Charging the Battery Pack" and then charge the battery.

Cannot use the Tablet / The cursor does not move	
Is the wireless adapter connected to the computer?	<p>Check that the wireless adapter is connected to the computer being used.</p> <div style="border: 1px solid black; padding: 5px; display: inline-block;">  <p>Connect the wireless adapter directly to the USB port on the computer. It may not operate correctly if a USB hub is used.</p> </div>
Is the Status LED on the tablet or the LED on the wireless adapter flashing?	There is no communication between the Tablet and wireless adapter. See "Wireless Communication Settings for the Tablet".
Communication is not possible.	<p>If a wireless device or electronic equipment is used near the product, communication between the Tablet and wireless adapter may be unstable due to interference from electric waves.</p> <p>Do not use equipment that causes interference near the Tablet.</p>
Is the pen's dry cell battery running low?	<p>Replace with a new dry cell battery.</p> <p>See "Inserting the Battery into the Pen".</p>
Is Image Mate Accent Driver operating correctly?	<p>The software may not have been installed correctly.</p> <p>Refer to "Installing the Tablet and SRS Software (Image Mate Accent)", uninstall the software, and then install it again.</p>
Are the Image Mate Accent Driver settings suitable?	<p>The tablet may not respond if the pressure sensitivity is too low or the touch sensitivity is too high.</p> <p>Perform the appropriate settings.</p>


Communication between the Tablet and wireless adapter is unstable	
Is third-party Tablet software installed?	If third-party Tablet software is running, it may conflict with the operations of this ELMO Tablet. Do not operate third-party Tablet software while using this Tablet.
Are the Tablet and wireless adapter in the proper condition?	Communication may become unstable because of an obstruction between the Tablet and wireless adapter, due to the inherent characteristics of wireless communication, or because of the installation angles of each part. Remove the obstruction or change the installation location.
Is a wireless device or electronic equipment being used nearby?	A wireless device or electronic equipment may interfere with the communication between the Tablet and wireless adapter. Refer to "Wireless Communication Settings for the Tablet" and then perform the wireless settings. If the condition persists, stop using the wireless device or electronic equipment, or move to a location with no interference.

Document Camera is not displayed correctly with the Tablet software (Image Mate Accent)	
Are the output video settings of the Document Camera suitable?	Use the Document Camera while the video setting of the Document Camera is set to [PC] (RGB IN).
Is the resolution ratio of the Document Camera image suitable?	The Tablet software (Image Mate Accent) stores the resolution ratio of the Document Camera image. A suitable display can be obtained by matching the resolution ratio of the computer screen with the resolution ratio of the Document Camera image. See the User's Guide of your Document Camera for more details about the Document Camera settings.

Teaching materials are not displayed correctly with the Tablet software (Image Mate Accent)	
Have you deleted the video or picture that was being used as the background?	If a teaching material is displayed that used a video or picture that has since been deleted, the background cannot be displayed. Be very careful before deleting videos or pictures.

Cannot find the storage location of teaching materials created with the Tablet software (Image Mate Accent) or captured images.	
The storage location is described on the right.	My Document → My Pictures → Image Mate Accent → rec

Cannot play the audio of a teaching material with the Tablet software (Image Mate Accent)

Is the video a lesson recording video?	The video types are lesson recording, normal recording, intermittent recording and frame recording. Of these, audio is recorded only with lesson recording. Audio is not recorded with the other video types.
Are the audio settings suitable?	If the input volume was low during video recording or the playback volume is low, it may be difficult to hear the audio. Set the volume to a suitable level.
Is the sound device of the computer set to a suitable level?	Audio recording and audio playback is not possible in a computer environment in which a sound device is not installed. <div data-bbox="676 781 1370 896" style="border: 1px solid black; padding: 5px;"><p>Caution Operation is not guaranteed for all computer environments.</p></div>

Product Specifications

Product Specifications

Tablet

Model Name	CRA-1
Operating Temperature	0 to 40 °C
Reading Range	8.0 x 5.0 inches (203.2 x 127.0 mm)
Reading Resolution	0.0127 mm
Reading Accuracy	0.42 mm
Reading Speed	120 rps
Pen Pressure Level	1024 level
Wireless Band Used	2.4 GHz
Communication Range	Approx. 15 m (differs depending on the usage conditions)
Power Supply	Battery pack (lithium-ion battery)
Continuous Operation Time	Approx. 22 hours (differs depending on the usage conditions)
Auto Power Off Time	Approx. 30 minutes
Full Charging Time	Approx. 4 hours
Consumption Current	When using USB 5 V 500 mA When using the battery pack 3.7 V 60 mA
Computer Models	IBM compatible computer equipped with a standard USB port and CD-ROM drive (Operation is not guaranteed for all computer environments.)
Compatible OS	Windows 7 / Vista SP1 / XP SP2
External Dimensions	W315 x D257 x H23 (mm)
Weight	670 g (including the tablet, wireless adapter, pen, dry cell AAA battery (for the pen), Tablet battery pack)

Clicker

Model Name	CRV-CK-1
Operating Temperature	0 to 40 °C
Wireless Band Used	2.4 GHz
Communication Range	Approx. 15 m (differs depending on the usage conditions)
Power Supply	Two dry cells (Type LR03, AAA)
Continuous Operation Time	Approx. 150 hours (differs depending on the usage conditions)
Auto Power Off Time	Approx. 30 minutes
Consumption Current	MAX. 3.0V 60 mA
External Dimensions	L110 x W64 x H26 (mm)

Weight	90 g (including two dry cells)
--------	--------------------------------

System Requirements

The Tablet can be used in the following computer environments.

Computer model	IBM PC/AT compatible
Operating system (OS)	Microsoft Windows XP Home Edition / Professional SP2 Microsoft Windows Vista Home Basic / Home Premium / Business / Enterprise / Ultimate SP1 Microsoft Windows 7 Starter / Home Premium / Professional / Ultimate
CPU	Intel Core 2 Duo 2 GHz equivalent or higher
Memory	2 GB or higher
Video board	Board compatible with Microsoft DirectX 9.0c
Hard disk	1 GB or higher
Screen resolution	1024×768 pixels or higher 32-bit or higher
USB	USB 2.0 HI-SPEED
Compatible Document Cameras	<ul style="list-style-type: none"> · L-1ex · L-1zero · L-1zero r · TT-02RX · TT-02s · L-1n · P10S · P30S · P10 · P100 · P100N · HV-110u · FF-1 · CO-10 (i-Pochette) · L-12 · TT-12



Caution

- If a sound device cannot be used, some of the functions may not operate.
- Operation is not guaranteed for all computer environments.

About the Separately Sold Accessories

The following products are sold separately as accessories. (However, please understand that some products have a limited manufacturing cycle.)

- Dedicated Tablet pen Tablet Pen for CRA-1
- Battery pack Battery Pack for CRA-1

Consult your local dealer about purchasing accessories.

Usage Precautions

■ About electric waves used by the Tablet and Clicker

The Tablet uses electric waves in the 2.4 GHz band. When using the Tablet and Clicker, a radio station license is not necessary. However, please note the following precautions.

Do not use near the following:

- Microwave ovens/industrial, scientific or medical equipment, such as pacemakers
- In-factory radio stations for mobile unit identification systems (radio stations that require a license) used in production lines of factories
- Specified low power radio stations (radio stations that do not require a license)
- IEEE802.11g/b wireless LAN units

When the Tablet is used near any of the equipment mentioned above, electric wave interference may occur, making the Tablet difficult to use.

■ About wireless equipment used in the 2.4 GHz band

This frequency bandwidth is the same as for industrial, scientific, and medical equipment such as microwave ovens, mobile unit identification systems (radio stations that require a license) used in factory production lines, and specified low-power radio stations (radio stations that do not require a license).

- Before using this product, check that there are no radio stations for mobile unit identification systems or specified low-power radio stations nearby.
- If this product emits electric waves which interfere with in-factory radio stations for mobile unit identification systems, cease use immediately and stop generating the electric waves. For information on countermeasures, etc. (for example, erecting partitions), contact one of our sales departments whose details are provided at the end of this manual.
- If this product emits electric waves which interfere with specified low-power radio stations used for mobile unit identification systems, or causes similar problems, contact one of our sales departments whose details are provided at the end of this manual.

■ About the use of this product

This product can only be used in countries or regions where it complies with wireless regulations, such as laws related to electric waves.

Contact your dealer before using this product outside the country or region of purchase.

■ About the battery pack

The battery pack used in the Tablet is a rechargeable lithium-ion battery. As it can easily be affected by temperature and humidity, store the battery pack in a dry location between 15 and 25°C.

During charging, after charging, and during use, the battery pack becomes warm.

Remove the battery pack from the tablet if it will not be used for a long time.

When using the battery pack, check that the outside and terminals of the battery pack are not deformed in any way. A deformed battery pack can be very dangerous and should not be used under any circumstances.

The battery pack's service life is reduced if frequent top-up charging is performed.

For an unneeded battery pack, cover the metallic sections with insulating tape such as Scotch Tape, and recycle it in accordance with your local regulations, or take it to one of our sales departments whose details are provided at the end of this manual.

■ Replacing the battery pack

If the product can only be used for an extremely short time or the power does not come on, the battery pack has reached the end of its service life.

Please purchase a new battery pack from one of our sales departments whose details are provided at the end of this manual.

Please note that the battery pack is considered to be a consumable item and therefore a fee is charged even if replacement is required within our warranty period.

■ About the operating environment and storage

- The Tablet is for indoor use only. It cannot be used outdoors.
- Do not place the product in a damp or dusty location, in a location exposed to the sea breeze, or in an area exposed to high vibration.

The operating environment conditions are as follows.

Temperature: 0 to 40°C

Humidity: 30 to 90% (no condensation)

- Do not store in a location exposed to direct sunlight or near to heating equipment. Discoloration, deformation or malfunctions could result.

■ Cleaning

When cleaning the Tablet, remove the connected cables and the battery pack, and perform in a location that is not subject to humidity or moisture.

- Remove any dirt from the Tablet with a soft, dry cloth.
- To remove stubborn dirt, dilute some detergent in water, dip a soft cloth in the water, and then wring it out before using it to wipe away the dirt. Do not use any volatile solvents such as thinner or benzene.

■ Disclaimer


The contents of this manual and Image Mate Accent may be changed in the future without prior notice.

The software installed on your computer or your peripheral devices may inhibit the operation of ELMO software.

ELMO accepts no responsibility whatsoever for any losses, direct or indirect, that result from the use of ELMO software.

■ About Trademarks

The following trademarks and registered trademarks are used in this manual.

 and Image Mate are registered trademarks of ELMO Co., Ltd.

 is a trademark of ELMO Co., Ltd.

The full title for Windows® XP is the Microsoft® Windows® XP operating system.

The shortened form of the OS name is used in the text.

The full title for Windows® VISTA is the Microsoft® Windows® VISTA operating system.

The shortened form of the OS name is used in the text.

The full title for Windows® 7 is the Microsoft® Windows® 7 operating system.

The shortened form of the OS name is used in the text.

Microsoft and Windows are registered trademarks of the Microsoft Corporation in the U.S. and other countries.

All other company/product names described in this manual are trademarks or registered trademarks of their respective companies.

About the Warranty

The warranty for this product is described below.

■ About the warranty certificate

Your dealer will give you the warranty certificate.

Be sure to check the details on the certificate, such as the dealer name and date of purchase.

Read the contents of the warranty carefully and store it in a safe place.

Warranty period: 1 year from purchase
--

■ To order a repair during the warranty period, contact the dealer where you purchased the product.

The dealer will perform the repair in accordance with the conditions in the warranty certificate.

■ About maintenance parts

ELMO will stock maintenance parts for this product

(the parts required for maintaining the function of the product) for 8 years after the end of production. Repair will be possible until the end of this parts storage period.


■ Please provide the following information when ordering repair.

- Your name, address and telephone number
- Product name and model name
- Date of purchase (see your warranty certificate)
- Malfunction description
- Status of the abnormality (as much detail as possible)

■ To order a repair after the warranty period has elapsed, consult the dealer where you purchased the product.

If a repair that will maintain the product's function is possible, we can perform it for a fee.

■ If you have any questions about after-sales service, such as repairs during the warranty period, contact the dealer where you purchased the product.

Loving inspection	• Please have your products inspected after using them for a long time!	Products can deteriorate or break down due to the effects of heat, humidity or dust, or their usage conditions. Sometimes this may impair safety, resulting in an accident.
		

ELMO CO., LTD. 6-14, Meizen-cho, Mizuho-ku, Nagoya, 467-8567, Japan

OVERSEAS SUBSIDIARY COMPANIES

ELMO USA CORP.

Headquarters

1478 Old Country Road
Plainview, NY 11803-5034, U.S.A
Tel:(516) 501-1400 Fax:(516) 501-0429
E-mail: elmo@elmousa.com Web: <http://www.elmousa.com>

West Coast Branch

Cypress Pointe Business Park
5676 Corporate Avenue
Cypress, CA 90630, U.S.A
Tel:(714) 828-8457 Fax:(714) 828-8429

ELMO Europe SAS

Immeuble Elysées la Défense,
7C, Place du Dôme,
92056 Paris la Défense, France
Tel: 33 (0) 1 73 02 67 06 Fax: 33 (0) 1 73 02 67 10

6X1CRVAC2 R0-Xdx