

Bluetooth USB **Stereo/VoIP Dongle**

Model name: imFONE BS-100

User Manual ver 1.0



ABOUT imFONE BS-100:

Plug-and-play / Driver Free

Bluetooth Stereo/VoIP USB Dongle

Multi Button for Pairing/Connecting/Mode Change is Available

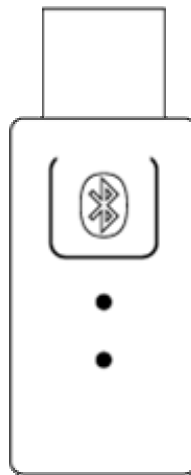
Compatible with most standard Bluetooth Stereo/Mono Headsets

Contents

1. About imFONE BS (Bluetooth Stereo Dongle).....	3
1.1 Features.....	3
1.2 Specification	4
1.3 Package Constitution.....	4
2. imFONE-BS Overview	5
2.1 Button Operation	5
2.2 LED Indication State	5
3. Connecting to the Bluetooth Headset	6
4. Setting Up The Default Audio Device.....	7
5. Using imFONE-BS with Bluetooth Stereo Headset	9
5.1 Stereo mode (music streaming)	9
5.2 VoIP Call mode	10
6. Using imFONE-BS with Bluetooth Mono Headset.....	11
6.1 VoIP Call Mode	11
6.2 Music Play.....	11
7. Using imFONE-BS for File Transfer / Networking... ..	12
7.1 Mode Change	12
7.2 Bluetooth Software.....	13
8. Usage Example.....	14
8.1 Skype Setting for VoIP Calling.....	14
8.2 Use with Jabra Bluetooth Stereo Headset.....	15
9. FAQs.....	16
10. User's Information.....	20
11. Contact	20

1. About imFONE BS-100 (Bluetooth Stereo Dongle)

With imFONE BS-100, Bluetooth Stereo/Mono Audio USB Dongle, you will be wirelessly listening to your favorite stereo music and also making/receiving VoIP calls through your Bluetooth stereo or mono headset. You can switch between stereo streaming and mono headset modes on the fly. Due to its embedded design, you can enjoy its audio functionalities in many OSs such as MS, Mac, and Linux. Additionally, imFONE BS allows you to enjoy General Bluetooth functions (HCI Mode) as well.



1.1 Features

- **Audio Mode**
 - Plug & Play (Built-in Pairing Button)
 - Stereo Music Streaming
 - VoIP Calls (Skype / Yahoo / MSN / Google / Gizmo etc.)

- **General Bluetooth Mode (Envelopes Toshiba Stack)**
 - Connect your PC to a Bluetooth enabled mobile phone
 - Connect your PC to Internet
 - Synchronize with a Bluetooth enabled PDA
 - Hook up to an office network (Thru Bluetooth access point)
 - Communicate with other Bluetooth devices

1.2 Specification

Standard: Class 1, Bluetooth specification 1.2 Compliant

Frequency: 2.4 GHz

Interface Type: USB connector, USB 1.1 compatible

Range: Up to 30~50 meters in line of sight (Depends on the range of Headset)

Multi-Booting: Selectable Booting between Audio and General Mode

a) Audio Mode:

- Embedded Profiles: Headset/A2DP/AVRCP profile
- Plug & Play, without Driver Installation
- Supports MS, Mac and Linux.

b) HCI Bluetooth Mode:

- Toshiba Stack Profiles: PAN/OBEX/Serial/DUN/GAP/SDP etc.
- Maximum Data Transfer Rate: 723Kbps
- Security: Encrypted link, Authentication
- support Pico-net up to 7 different Bluetooth enabled devices

1.3 Package Constitution

Model no.	Pictures	Q'ty
imFONE-BS-100		1ea
USB extension cable		1ea
Quick Guide	Qucik Start Guide	1ea
CD	User Manual / Utility Software / Toshiba Bluetooth Software	1ea

2. imFONE BS-100 Overview



2.1 Button Operation

Pairing	Press the multi button of the dongle for 5 seconds
VoIP/Stereo Mode Switch	Press the multi button of the dongle once shortly
Connecting to the last bond device	Press the multi button of the dongle shortly
Mode Switch from Audio to General	Press the multi button of the dongle three times in one second.
Mode Switch from General to Audio	Press the multi button of the dongle for 3 seconds

2.2 LED Indication State

When used with Bluetooth Stereo Headset

	White LED (Stereo/VoIP status)	Blue LED (Connection status)
Standby	OFF	Flashes once every 2 seconds
Connecting		Flashes twice every 1 second
Pairing		Flashes rapidly
Connected/Paired	-	ON
Stereo streaming	Flashes twice every 2 seconds	ON
VoIP call	Flashes once every 2 seconds	

When used with Bluetooth Mono Headset

	White LED (Stereo/VoIP status)	Blue LED (Connection status)
--	--------------------------------	------------------------------

Standby / Connecting Pairing / Connected	Refer to the LED operations with Stereo Headset	
VoIP call/Audio	Flashes once every 2 seconds	ON

When used for General Bluetooth functions

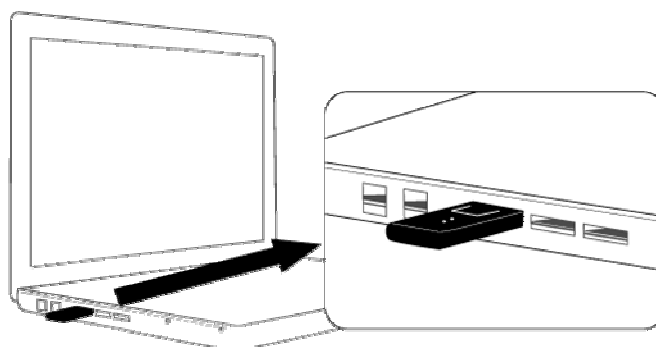
*Applicable only after converting to HCI mode.

General Bluetooth	White LED and Blue LED Flash every 1 Second simultaneously
-------------------	--

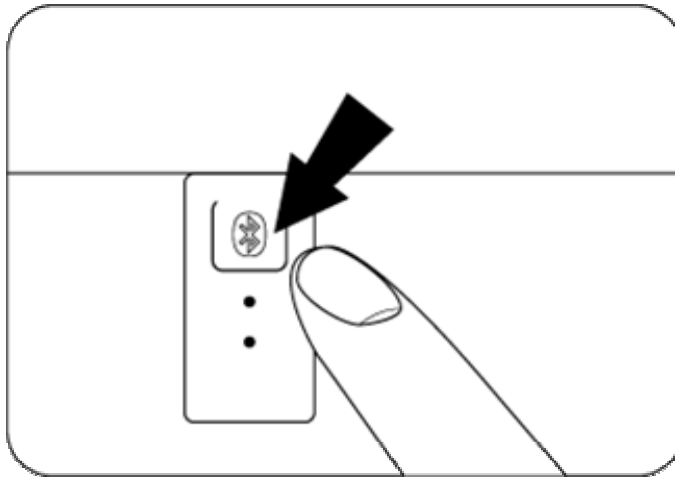
3. Connecting to the Bluetooth Headset

To use imFONE dongle, it must be registered in the Bluetooth headset before it can provide a link between the computer and the headset. This is called "Pairing" and it needs to be set only once when you initially register the device. By resetting pairing, the imFONE dongle can be paired with other Bluetooth Headsets.

- A. Plug the imFONE Stereo dongle into the USB port of the PC.



- B. Turn on the headset and place the headset in Pairing Mode.
C. Press down the multi-button (pairing button) of imFONE BS located at the center of the dongle for 5 seconds to place the dongle in Pairing Mode.



<Press for 5 seconds 문구 삽입>

D. Turn on the headset and place the headset in pairing mode. Please refer to the headset user guide for pairing.

** Please note that The PINCODE of the headset should be "0000" or "1234" or "8888"

** After once the pairing is made, to reconnect between the dongle and headset, wait for maximum 2 seconds in status you insert the dongle into PC and then, turn on the headset. If the connection is failed, just press down the multi-button of the dongle after turning on the headset for 0.5 seconds shortly. (If the paging is performed, The Blue LED will flash rapidly and then, if the connection is succeeded, the Blue LED will be ON)

4. Setting Up The Default Audio Device

a) Windows

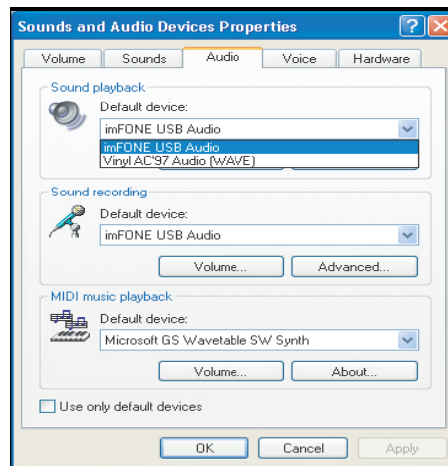
Double click Start > Control Panel > Sound & Audio Device.

After pressing the Audio Tab, please set up the imFONE dongle to the basic Sound Device Play and Record.

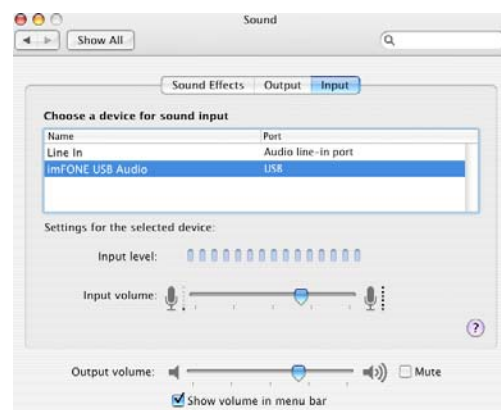
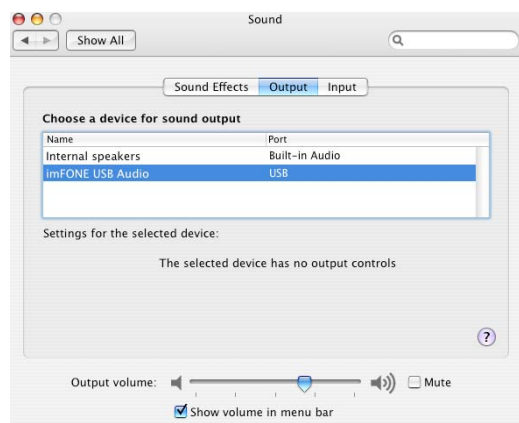
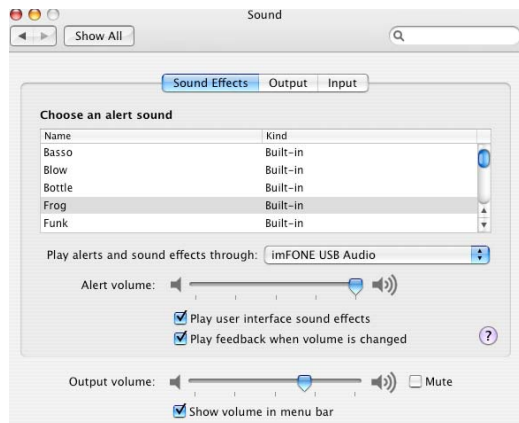
The imFONE dongle name should be listed as:

Windows 2000: USB Audio

Windows XP: imFONE USB Audio



b) MAC



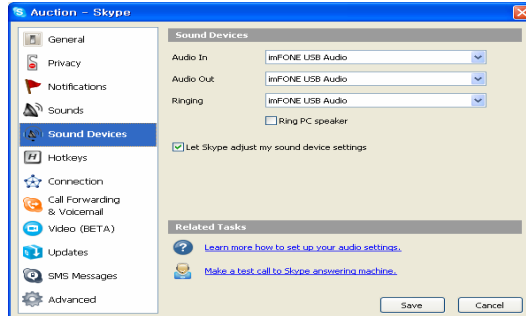
c) VoIPs

Please refer to the VoIP user guide for setting up the Audio Device.

Example) For Skype

Double click Skype Icon>Tools>Options>Sound Devices

Under the Audio In, Audio Out and Ringing drop-down menus, select “imFONE USB Audio” and click Save.



5. Using imFONE BS-100 with Bluetooth Stereo Headset

imFONE-BS, Bluetooth Stereo Dongle, may be used for both Stereo music streaming and VoIP calls when it is connected with a Bluetooth Stereo Headset. Enjoy Wireless Stereo Music Streaming with imFONE-BS!

<스테레오 헤드셋 장착한 그림 + imFONE BS 그림 삽입: 전에 선미씨 박스 패키지 디자인에서 사용된 그림 정도면 좋을 것 같음>

5.1 Stereo mode (**M**usic **S**treaming)

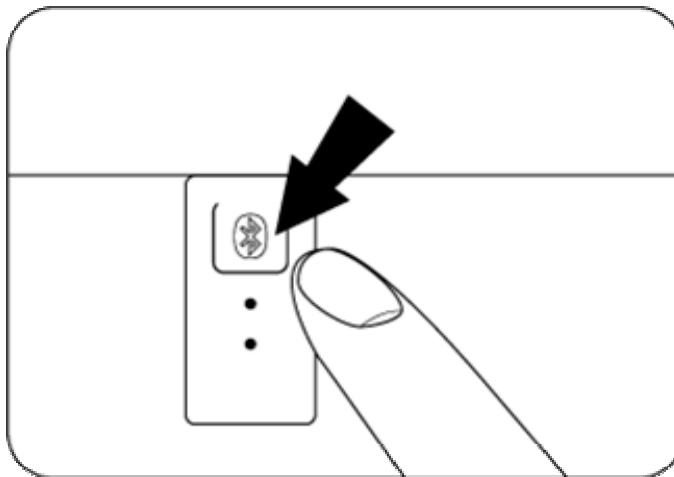
** imFONE dongle also supports the Interface to control Window Media Player through HID Interface and if your Bluetooth Stereo headset has functions such as “Pause”, “Backward”, “Forward”, you can make them by pressing down the button of the headset while you’re listening to music.

- To listen to Stereo Music, press the multi button of the headset (Play/Pause button) after playing music in Window Media Player.
- To stop music coming out the headset, press the multi button of the headset (Play/Pause button) or click the stop button of Music Player.
- To pause music, press the multi button of the headset (Play/Pause button) while you’re listening to music.
- To release music, press the multi button of headset (Play/Pause button) again from pause status.

- Forward/Backward: Press down forward/backward button of the headset
- Volume up/down : Press down Volume button of the headset

5.2 VoIP Call mode

- To switch the mode: press down the multi button of the dongle once shortly. The mode will be switched from Stereo to Mono or Mono to Stereo.



<Press Once Shortly 문구 삽입>

- While you're listening to music, if the phone is ringing, the ring sound will be active and you can receive call by pressing down the multi button of the headset (Answer button). And the music won't come out the headset. If the music still comes out the headset along with the VoIP call, please press down the stop button of music player.
 - To make/receive VoIP call, Press the multi button of headset (Answer button)
 - To end call, Press down the multi button of headset (Answer button).
- * While you're calling, if you press down the multi button of headset (Answer button). the call will be ended. To switch the mode to Stereo for listening to music, press down the multi button of the dongle once. And then, you can listen to music by clicking the play button of music player.

6. Using imFONE-BS with Bluetooth Mono Headset

imFONE-BS also may be used with a Bluetooth mono headset, which is being used widely for mobile phone users. You may enable your Bluetooth mono headset to become a VoIP headset by simply connecting with imFONE-BS.

<모노 헤드셋 장착한 그림 + imFONE BS 그림 삽입:
전에 선미씨 박스 패키지 디자인에서 사용된 그림 정도면 좋을 것 같음 >

6.1 VoIP Calls

- To switch the mode: press down the multi button of the dongle once shortly. The mode will be switched from VoIP call to Audio or Audio to VoIP call.
- While you're listening to music, if the phone is ringing, the ring sound will be active and you can receive call by pressing down the multi button of the headset (Answer button). And the music will come out the headset. When the music still comes out the headset along with the VoIP call, please press down the stop button of music player.
- To make/receive VoIP call, Press the multi button of the headset.
- To end call, Press down the multi button of headset (Answer button).

* While you're calling, if you press down the multi button of headset (Answer button). the call will be ended. To listen to music, click down the play button of Music Player and then, press down the multi button of the headset.

6.2 Music Play

- To listen to Music, click the play button of Music Player and then, press down the multi button of the headset
- To stop music coming out the headset, press the multi button of the headset or click the stop button of Music Player.
- Volume up/down : Press down Volume button of the headset

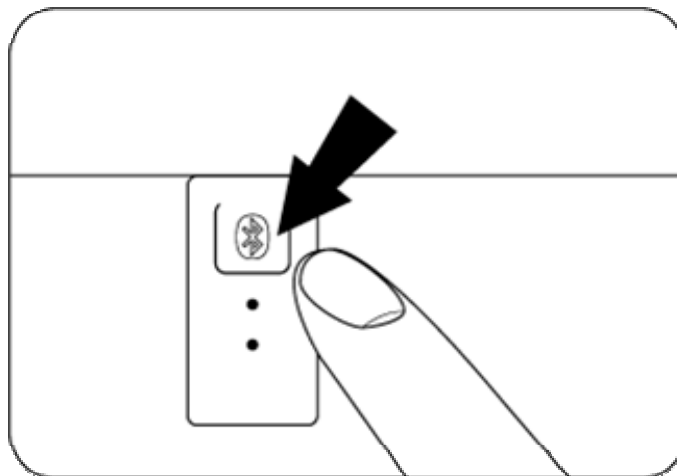
7. Using imFONE-BS for File Transfer / Networking...

imFONE-BS supports HCI mode of operation, so users may use it as a standard Bluetooth USB dongle enabling File Transfer and various **networking with other** Bluetooth devices like Bluetooth Handset, printer, and PC etc.

7.1 Mode Switch

There are two ways to switch the mode of imFONE-BS from Audio to HCI mode.

- a) **By pressing multi button:** To use imFONE as this purpose, please press multi-button 3 times in one second.

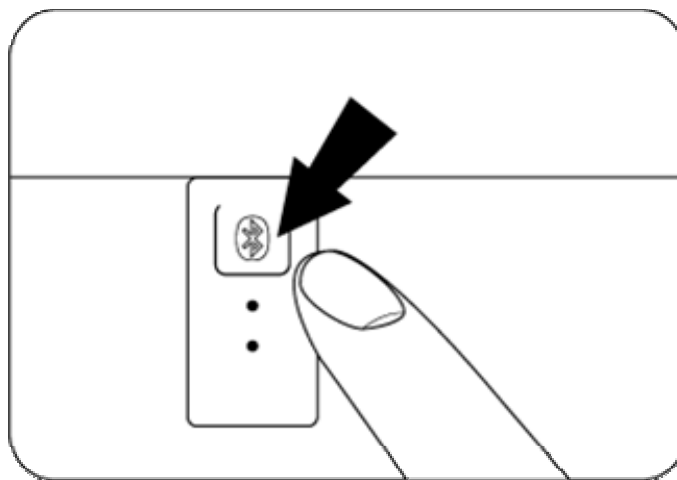


<그림 삽입요: 동글이 손으로 누르는 그림에 “Press 3 times in one second” 문구 삽입>

- b) **By Utility Software:** Users may do this job using the Utility software included in CD (File name: imFONE_Mode.exe) as well.



c) To get back to Audio (Stereo mode) from HCI mode to stream music:



<문구삽입요: Press the multi button for 3 seconds>

7.2 Bluetooth Software

- a) **Users with Windows XP (service pack 2 update) and MAC OS X 10.2.8 or higher** may use imFONE as a general Bluetooth dongle (for File transfer, Networking etc.) without installation of additional Bluetooth software.
- Please plug in imFONE-BS to your PC, and press the multi button 3 times in a second.
 - Then you will see the both White and Blue LEDs are lighting AT THE SAME TIME.
(Please be sure that both LEDs should be lighting at the same time)
 - Then, you will see the enabled Bluetooth Icon on the tray bar of Windows and will be able to use Bluetooth services such as operating with other Bluetooth devices like Bluetooth Mobile Phone.
 - For Mac Users, open the Bluetooth Setup Assistant, located in /Applications/Utilities, and follow the onscreen instructions to set up a Bluetooth device. You can also choose Setup

Bluetooth Device from the Bluetooth status menu.

b) **For Users with old version OSs, Toshiba Bluetooth software** is provided in the CD.

- Please install the Toshiba Bluetooth Software in the CD to your PC.
- Please plug in imFONE-BS to your PC, and press the multi button 3 times in a second.
- Then you will see the both White and Blue LEDs are lighting AT THE SAME TIME.
(Please be sure that both LEDs should be lighting at the same time)
- Then, you will see the enabled Bluetooth Icon on your Windows and will be able to use Bluetooth service to operate with other Bluetooth devices like Bluetooth Mobile Phone by clicking the Toshiba Bluetooth Software.
- Please refer to the user guide of the Toshiba Bluetooth software for more information.

8. Usage Example

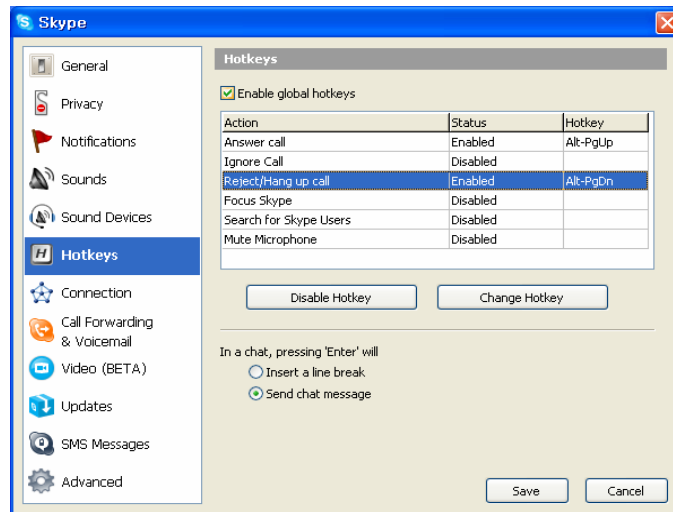
There can be various types of usage examples, as imFONE-BS may work with Skype/VoIPBuster/MSN/Google/Yahoo...etc. for VoIP calling, and may also work with various Bluetooth Stereo Headsets from different manufacturers like Motorola/Jabra/Plantronics/Logitech...etc.

Here we will describe one of the usage model, so users may understand how imFONE-BS may be used.

In this example, *Skype* for VoIP calling and *Jabra 620s Bluetooth Stereo Headset* were used.

8.1 Skype Setting for VoIP Calling

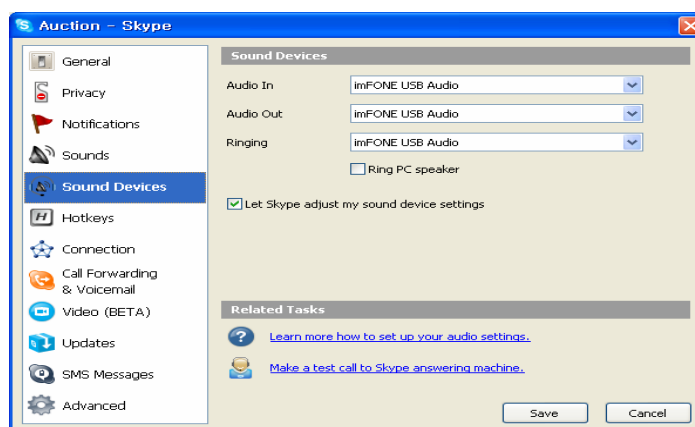
8.1.1 Install Skype program in your PC. And then, after running Skype, go to tools => options => hotkeys => mark check box, "Enable global hotkeys".



Set the status of “Answer call” and “Reject/Hang up call” to “Enabled” and then click Save.

8.1.2 Set up the Sound Devices of Skype softphone, go to Tools=> Options=>Sound Devices.

Under the Audio In, Audio Out and Ringing drop-down menus, select “imFONE USB Audio” and click Save.



8.2 Use with Jabra Bluetooth Stereo Headset

8.2.1 To switch the mode: In VoIP call mode, press down right multi button of headset (Play/pause button). In Stereo mode, press down left multi button of headset(Answer button).

* Note: In only some Bluetooth Stereo headset such as BT620s, you can switch VoIP/Stereo mode by pressing down the headset button.

- 8.2.2 To listen to Stereo Music, press the multi button of the headset(Play/Pause button) after playing the Music Player in your PC.
- 8.2.3 While you're listening to music, if the phone is ringing, the ring sound will be active and you can receive call by pressing down the multi button of the headset(Answer button) or pressing down the multi button of the dongle twice shortly. And the music won't come out the headset. If the music still comes out the headset along with the VoIP call, please press down the stop button of music player.



- 8.2.4 To make/receive VoIP call, Press left multi button of headset (Answer button)
- 8.2.5 To end call, Press down left multi button of headset (Answer button).
- * While you're calling, if you press down left multi button of headset (Answer button). the call will be ended and the Mono mode (Phone mode) will be switched to Stereo mode automatically. And then, you can listen to music by pressing down right multi button of headset (play/pause button).

8.2.6 Music Streaming with Windows Media Player

- To pause music, press the multi button of headset (Play/Pause button) while you're listening to music.
- To release music, press the multi button of headset again from pause state.
- Forward/Backward: Press down forward/backward button of headset
- Volume up/down : Press down Volume button of headset

9. FAQs

- 1) How may I know whether my imFONE-BS is connected with my Bluetooth headset?

- ➔ If imFONE-BS is connected with your Bluetooth Headset, Blue LED will be ON continuously.
- 2) Once I made connection, will my imFONE-BS and Headset be **always connected automatically**?
- ➔ Once you pair/connect your imFONE-BS and your Bluetooth headset, those two devices will be connected automatically as powered on in 2 seconds. If the connection is not made in 2 **seconds**, please press the multi button of the imFONE-BS for 0.5 second shortly.
- 3) How I may listen to Stereo **music** from my PC through Bluetooth stereo headset?
- ➔ Once connected, play the music player in your PC and then you will be able to enjoy wireless stereo music streaming. No installation of driver/software is required for this. Purely Plug-and-play operation.
- 4) While listening to music, I hear VoIP call ringing sound, how I may receive the call?
- ➔ Press multi button of imFONE-BS once shortly. **In case of** some of Bluetooth headsets which support 'Answer button event' (ex. Jabra 620s), you may press the 'Answer button' of your Bluetooth headsets to receive the call.
- 5) **I ended my call, how may I restart my music play in Stereo mode?**
- ➔ **After ending your call by pressing 'Answer button' of your headset, press 'Play/Pause' button of your Bluetooth headset to restart the music play. If you ended the call by clicking 'hang-up' button of your VoIP program, please press the 'Answer button' of your headset once or wait for about 8 seconds to get back to Stereo mode, then press 'Play/Pause' button of your headset.**
- 6) Can I use forward/backward and Volume up/down buttons of Bluetooth stereo headset, listening to PC stereo music?
- ➔ Yes. imFONE-BS supports the interface to control Windows Media Player through HID interface. You may control forward/backward/volume up/down of your music play using your headset buttons simply.
- 7) As finishing my VoIP call, I started to play my music using Media Player, but now sound quality becomes poor. What happened?
- ➔ As you finished your call, if you did not press the 'Answer button' or have not waited for **about 8 seconds and started the music by clicking play button of the music player, you are listening music in Mono mode. In Mono mode, sound quality becomes poor. To get back to Stereo mode, please press 'Play/Pause' button of your headset, then you will be able to stream crystal-clear music sound again.**
- 8) How far I may move from my PC while listening the stereo music using my Bluetooth stereo headset?

➔ 30~50 meters from your PC.

- 9) I moved too far away from my PC, and connection has been finished, how I may reconnect imFONE-BS to my Bluetooth headset?

➔ Please press the multi button of imFONE-BS once shortly, **and then** confirm the Blue LED is ON continuously.

- 10) I am using Bluetooth mono headset. VoIP calling is OK but sound of music from PC is bad. How I may improve the sound quality?

➔ If you are using Bluetooth mono headset, you cannot listen the music in Stereo mode, so sound quality is not good. To listen to Stereo music from your PC, please use Bluetooth Stereo Headset, rather than Bluetooth mono headset.

- 11) How I may transfer files from my Bluetooth Mobile phone to PC using imFONE-BS?

➔ You will need to change imFONE-BS to HCI mode first. Please press the multi button of imFONE-BS 3 times in one second, and confirm that both White/Blue LEDs are lighting at the same time. Now you are able to use imFONE-BS as a general Bluetooth dongle for your purpose. Please refer to chapter 7. of this manual for more detailed information.

- 12) After pressing the multi button of imFONE-BS 3 times in one second, I still cannot use general Bluetooth services like file transfer. What is wrong?

➔ You should press the multi button 3 times **WITHIN** a second. If successfully changed to HCI mode, you will see both White/Blue LEDs are lighting simultaneously.

- 13) I am using Windows SP2 update, can I use imFONE-BS for networking with other PCs without installation of software?

➔ Yes. OSs like Windows SP2 update and MAC OS X 10.2.8 or higher provide Bluetooth functions. After you change the imFONE-BS to HCI mode, you may use the Bluetooth services provided by those OSs.

- 14) I have old version OS, and my OS does not include Bluetooth service. Can I use Bluetooth networking service using imFONE-BS?

➔ For users with old version OSs, which do not provide Bluetooth functions, we provide Toshiba Bluetooth Software as once of customer services. You may find Toshiba Bluetooth software in the CD. Please install the software on your PC then you will be able to use general Bluetooth services like file transfer and internet connections etc.

- 15) How I may get back to Stereo mode after finishing my Bluetooth file transfer to listen to music?

➔ Press the multi button of imFONE-BS for 3 seconds.

- 16) I cannot hear the music sound after connecting and playing the music through my Bluetooth Stereo Headset.
➔ Please make sure that you change the default audio device of your OS has been changed to 'imFONE USB Audio'. Please refer to Chapter 4 of this manual for more detailed information.
- 17) I cannot hear the voice of the caller and the caller cannot hear my voice when I use VoIP calling.
➔ Please make sure that you changed the default sound device of your VoIP program to be 'imFONE USB audio'. Please refer to Chapter 4 of this manual for more detailed information.
- 18) May I use imFONE-BS with my MAC?
➔ Yes. You may enjoy Stereo music play from your MAC through your Bluetooth stereo headset without any installation of software. To use imFONE-BS for other Bluetooth services like file transfer, please change the mode to HCI by pressing the multi button 3 times in a second. Then, open the Bluetooth Setup Assistant, located in /Applications/Utilities, and follow the onscreen instructions to set up a Bluetooth device

10. User's Information

Cautions

Modifications not expressly approved by the party responsible for compliance could void the user's authority to operate the equipment.

FCC compliance Information

This device complies with part 15 of FCC Rules. Operation is subject to the following two conditions: 1. This device may not cause harmful interference, and 2. This device must accept any interference received. Including interference that may cause undesired operation.

Information to User

This equipment has been tested and found to comply with the limits for a Class B digital device, Pursuant to part 15 of the FCC Rules. These limits are designed to provide reasonable protection against harmful interference in a residential installation. This equipment generates, uses and can radiate radio Frequency energy and, if not installed and used in accordance with the instructions, may cause harmful interference to radio communications. However, there is no guarantee that interference will not occur in a particular installation. If this equipment does cause harmful interference to radio or television reception, which can be determined by turning the equipment off and on, the user is encouraged to try to correct the interference by one or more of the following measures:

- Reorient or relocate the receiving antenna.
- Increase the separation between the equipment and receiver- Connect the equipment into an outlet on a circuit different from that to which the receiver is connected.
- Consult the dealer or an experienced radio/TV technician for help.

11. Contact

www.enustech.com

Enustech, Inc.

3~5F, JnJ Bldg., 785-12 Yoeksam-dong, Gangnam-gu, Seoul 135-080, Korea

Tel. +82-2-565-0782 / Fax. +82-2-501-1851

info@enus.co.kr / sales@enus.co.kr