



E980

Note

- [1] Before using the product, please read the Quick Guide to fully benefit from it.
- [2] This product involves constant upgrading and/or improvement, our company reserves the right to change the specifications of software and/or hardware mentioned in this operating guide without any prior notice. The product specifications and information mentioned in the operating guide are for reference only.

Check list

- [1] Please check the following accessories before you discard the packing material. Please contact your local dealer immediately if there is any missing or damage parts.

Accessories	Quantity
E980	1
Battery	1
USB Data Cable	1
Charging Plug	1
Quick Start Guide	1

1. Overview of E980

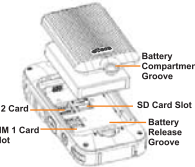


LED indicator light

Operating state	Indication
Charging	Red (Steady)
Message Prompt	Blue (Steady)
More than 90% charge capacity	Green (Steady)

2. Installation of SIM card

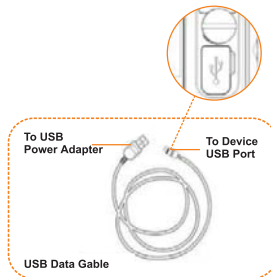
- Anticlockwise the switch of battery cover 45°, open it and remove battery.
- Insert the SIM card as shown in the picture.
- Insert the SD card into the slot as shown in the picture.
- Place the battery in the correct direction in the battery slot, and then close the battery cover by turning the battery cover switch clockwise 45° to lock the battery cover.



E980 Series Operating

3. Charging the Battery

- **Using USB Data Cable**



Connect the IP smart terminal and power adapter using the USB Data Cable.

Red light on the IP smart terminal indicates battery charging in progress.

Green light indicates fully charged.

Important:

Use only the designated charger.
Battery must be fully charged before first use.
Do not expose the battery to high temperature.
Do not dismantle the battery.

4. Basic operations

Startup

Press the power on button for 3 seconds, Once the screen goes light up, You will see the "Logo", it indicates successful Startup.

Shut Down

Press the power off button for 3 seconds, Popup window showing shutdown and restart, click on shutdown, Once the screen goes blank, the smart terminal is fully shut down.

Unlock

- Press Home or Power to light the screen.
- Slide lock icon on the screen to unlock.

Group Call

- Press and hold the PTT button until you hear the Permit Tone.
- You are now connected to the Group.
- You may begin to talk.
- Release PTT button to end the call and the device will be in the receiving mode.

Emergency Call

Press and hold the Emergency button for 3 seconds can start.

Backlight

Press "Power" button to on and off backlight. You can select the time duration of the backlight.

Low Batt

When the battery power fall below 15%, a "beeping" tone will be heard.

Document Manager

Select document manager, you will see all folder including pictures and videos.

5. Troubleshooting

No	Problem	Solution
1	Silent, no response	<ul style="list-style-type: none"> • Battery might be drained, please replace the battery or charge it. • Battery might not be installed correctly, please replace it with a fully charged battery or charge the battery. • Check if the device has been power on. • Check if the external audio accessory is connected.
2	Unable to make/ receive calls	<ul style="list-style-type: none"> • Check if you are in the same group. • Check whether the network is connected.
3	Battery drained rapidly	<ul style="list-style-type: none"> • Shut down the Wi-Fi and GPS if not in use.
4	Cannot Charge	<ul style="list-style-type: none"> • Check USB cable, replace if faulty.

FCC RF Exposure Information and Statement

This device meets the government's requirements for exposure to radio waves. The guidelines are based on standards that were developed by independent scientific organizations through periodic and thorough evaluation of scientific studies. The standards include a substantial safety margin designed to assure the safety of all persons regardless of age or health. The SAR limit of USA (FCC) is 1.6 W/kg averaged. Device types: Smart phone, push to talk over cellular (FCC ID: 2ARDS-E980) has also been tested against this SAR limit. SAR information on this and other pad can be viewed on - line at <http://www.fcc.gov/oet/ea/fccid/>. Please use the device FCC ID number for search. This device was tested simulation typical 10mm to Body and 25 mm push to talk. To maintain compliance with FCC RF exposure requirements, use accessories should maintain a separation distance between the user's bodies mentioned above, the use of belt clips, holsters and similar accessories should not contain metallic components in its assembly, the use of accessories that do not satisfy these requirements may not comply with FCC RF exposure requirements, and should be avoided.

FCC Warning

This device complies with Part 15 of the FCC Rules. Operation is subject to the following two conditions:

(1) This device may not cause harmful interference, and (2) this device must accept any interference received, including interference that may cause undesired operation.

NOTE 1: This equipment has been tested and found to comply with the limits for a Class B digital device, pursuant to part 15 of the FCC Rules. These limits are designed to provide reasonable protection against harmful interference in a residential installation. This equipment generates, uses and can radiate radio frequency energy and, if not installed and used in accordance with the instructions, may cause harmful interference to radio communications. However, there is no guarantee that interference will not occur in a particular installation. If this equipment does cause harmful interference to radio or television reception, which can be determined by turning the equipment off and on, the user is encouraged to try to correct the interference by one or more of the following measures:

- Reorient or relocate the receiving antenna.
- Increase the separation between the equipment and receiver.
- Connect the equipment into an outlet on a circuit different from that to which the receiver is connected.
- Consult the dealer or an experienced radio/TV technician for help.

NOTE 2: Any changes or modifications to this unit not expressly approved by the party responsible for compliance could void the user's authority to operate the equipment.