

LPD Pen User Manual

EVEREST Display Inc.
Model Name:LPD Pen
Model Number:LPDP-01
Trade Name:EVEREST
FCC ID:ZYJ-23010030

LPD Pen Specification :

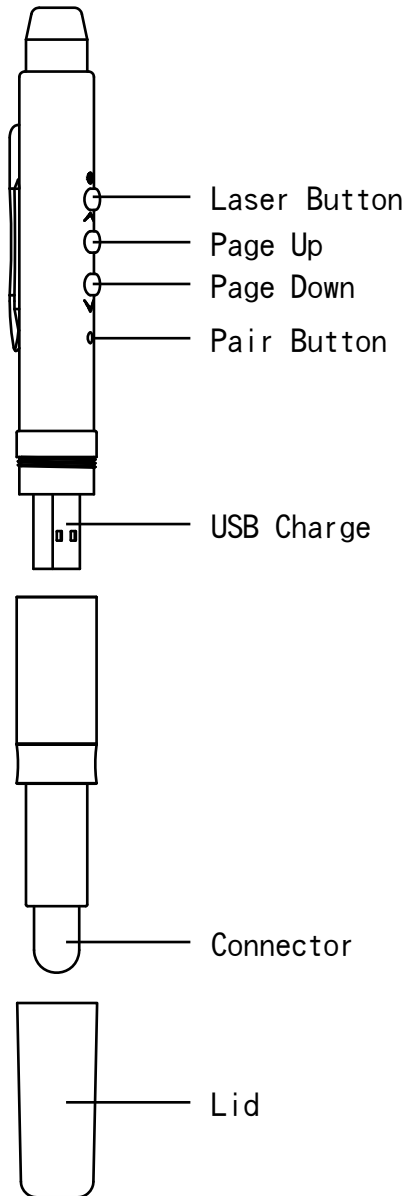
Specification		
Item	Transmitter	Transceiver
Working Voltage	1.9 ~ 3.5V	1.9 ~ 3.5V
Working Current	at 0dBm 11.1mA	at 1Mbps 12.9mA
Frequency ranage of operation	2402 ~ 2478 MHz	2402 ~ 2478 MHz
Channel number	77	77
Type of Modulation	GFSK	GFSK
RF Output Power	0dBm	
Input Impedance	15ohm + j88ohm	
Input Voltage	Max. 3.6V	
Sensitivity		at 1Mbps -85dBm
Output Impedance		15ohm + j88ohm
Size	f1.3*15.6cm	6*1.5*0.7cm
Weight	54.2g	6.0g
USB Version		USB2.0 / USB1.1
THD	(0.1% BER) 1Mbps -85dBm	
Distance	Max. 15M	
Antenna Type	PCB Antenna	
Pen Tip Working Mode	Maglev	
Pen Tip Switch on	Touch	
Laser Power	< 5mA	
Laser Wavelength	650nm	
Battery	lithium battery USB ChargeX1	
Operation system	Windows 98/Se/Me/2000/XP/ Mac OS/ Linux/ Windows Vista	

LPD Pen User Manual

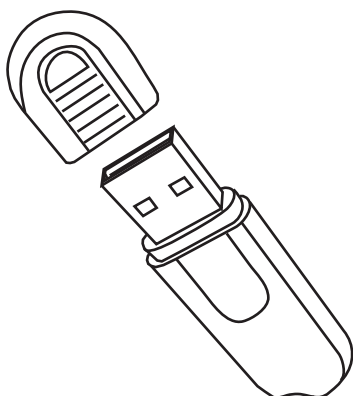
P/N:1335XXXX

Accessories

1. LPD Pen



2. USB Dongle



Illustration

1. 「LPD Pen」 Menu Illustration

When the tip touch the screen, signal from the tip transmit
To the CMOS sensor inside the Projector ◦
When signal transmit, the pen tip will glow ◦



Attention

There is a sensor inside the tip, when the tip is touched which will
consume the battery power ◦ For saving the power put the lid back to
the tip when not using ◦

2. 「USB Recharge」 Illustration

For battery recharge first time use the LPD Pen, please recharge the
battery for two hours ◦

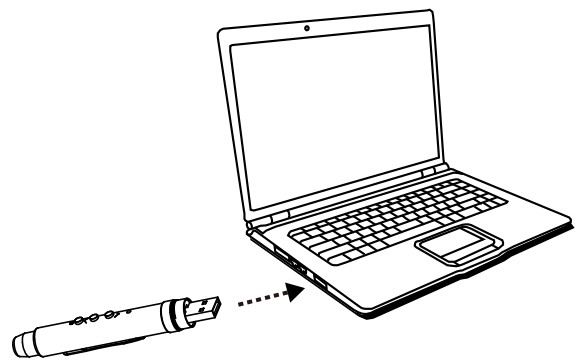
a.If the battery hasn't been used for a long time ,please recharge the
battery for a period of time ◦

1)Tip can be put anywhere on the screen ◦ ◦

2)When tip touch the screen ,you can start to draw ◦

b. When the LPD pen touch the screen, the tip doesn't glow, it means
low battery, please recharge it before using it for a period of time ◦

Method: Open the pen LPD pen connect the USB charge connector to
the computer USB socket or to USB battery charger ◦



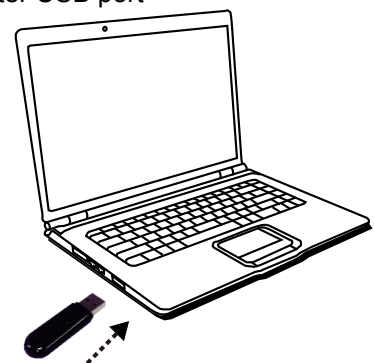
3. 「USB Dongle」 Illustration

Plug in USB dongle :

USB dongle use USB Interface , plug and play ◦

1. Search for Computer USB port ◦

2. Plug USB dongle into Computer USB port ◦



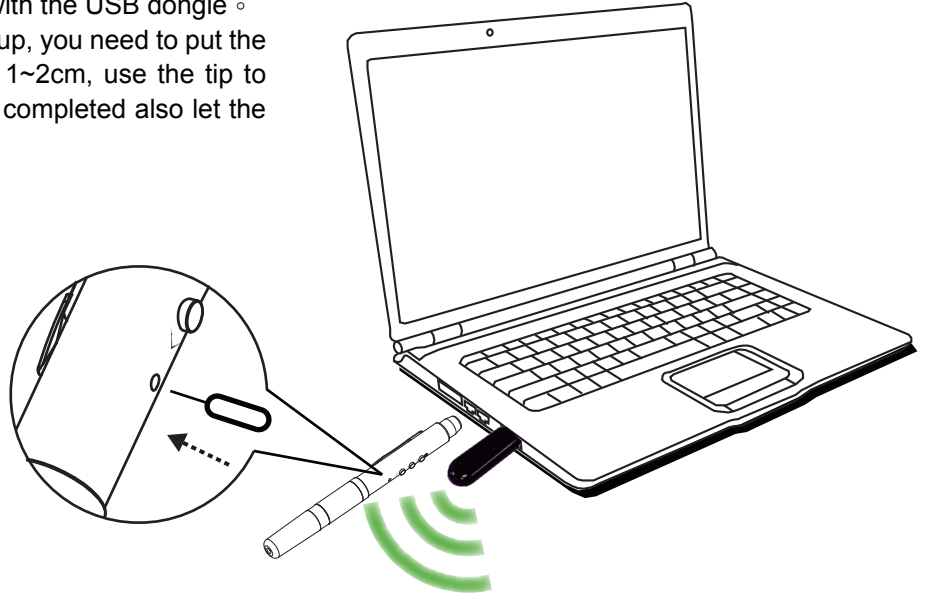
Illustration

4. 「 Pair-up 」 Button Illustration

USB LPD Pen Pair up button illustration :

Each LPD pen has already paired up with the USB dongle ◦

If you need one more LPD pen to pair up, you need to put the LPD pen near the USB dongle about 1~2cm, use the tip to push pair up button the pair up will be completed also let the LED light glow about 2 second ◦



5. 「 Page Up / Page Down 」 Button Illustration

a. Check before using the page up page down button

a1. Make sure USB dongle has been put inside the computer USB port ◦

a2. LPD pen needs enough power ◦

b. Page up/Page down button function is the same as the computer keyboard Page up / Page down button ◦

If the user is in the presentation, can use the LPD pen button to make your presentation more effective ◦

Troubleshooting

1. Laser Points For Attention :

When using it, you need to pay attention to some thing below :

Don't use laser to irradiate the eyes ◦

