

Appendix 6. User Manual

Refer to the following pages

Digital Audio Player

User's MANUAL



(N.B.) Copyright © 2003 by EZMAX Co., Ltd. All rights reserved.

The use of user's manual, pictures, software and other related documents of this product requires the prior permission of EZMAX, whose violation would be followed by a legal action or suit.

The content of user's manual are subject to change without any prior notice due to improvements in the product.

EZMAX CO., LTD.

<http://www.ezmax.co.kr>



Features

Thank you for purchasing this product.

Make sure to use it after carefully reading the user's manual.

This device is small, light and easy to carry, and plays digital music that meets MP3 and WMA standards.

This device has been so improved that It could last for 40 hours with only one small battery (AAA battery).

In addition, it adopts JOG button to easily use various functions and enables the user to upgrade the functions without any inconvenience of visiting A/S center in person.

If you want to upgrade to the latest software or have any inquiries, visit our website at <http://www.ezmax.co.kr>.

Now, you can enjoy convenience of digital storage device and delicacy of digital music our player provides.

Contents

1 Getting Started	
1. What's in the box	3
2. PC System Requirements ..	4
3. Cautions for Safety	5
2 Name of Parts	
1. Name of Parts	6
2. Name of LCD Window Display	7
3 Preparation	
1. Install Manager Program	6
2. Install USB Driver	9
3. How to Connect Player to PC	11
4 How to Use Manager Program	
1. Description of Manager Screen	
2. Download	14
3. Save File	15
4. Set Equalizer	16
5. Set Play Order/Delete File ..	17
6. Format Flash Memory	18
5 How to Use MP3 Player	
1. Power ON / Play	19
2. Power OFF / Pause	20
3. Volume Control	21
4. Select Next/Previous Track ..	22
5. Menu Mode	23
6. How to Insert Battery	29
6 Others	
1. Troubleshooting	30
2. Specification	31
3. MP3/WMA Responding Music Format	32
3. Service Information(A/S)	33
4. Warranty	34

1

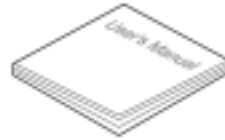
What's in the box



MP3 Player



Necklace Earphone



User's Manual



USB Cable



Install Program CD



AAA Size Battery

There are basic requirements for PC to install software and use mp3 player. Make sure to check recommendations before use.

- Windows 98SE / ME / 2000 / XP
- Pentium 200MHz or above
- USB port supports
- CD-ROM drive
- 64 MB RAM or above
- Free space of hard disk over 20MB
(Additional space required for saving music file)



For Listening to Music

Output level of this equipment guarantees quality sound at its middle volume. Since listening at its high volume for a long time may cause a serious damage to your hearing sense, listen at its proper volume.

Keep away from Strong Impact or Vibration.

Giving impact to or felling the main product or accessories on the floor may give a severe damage to the player.

For Storage

Avoid any place with a severe change in temperature, high humidity or strong magnetic field.

For Cleaning

Wiping the players with chemicals may change the color or give damage to the surface.

Wipe out the players using soft fabrics.

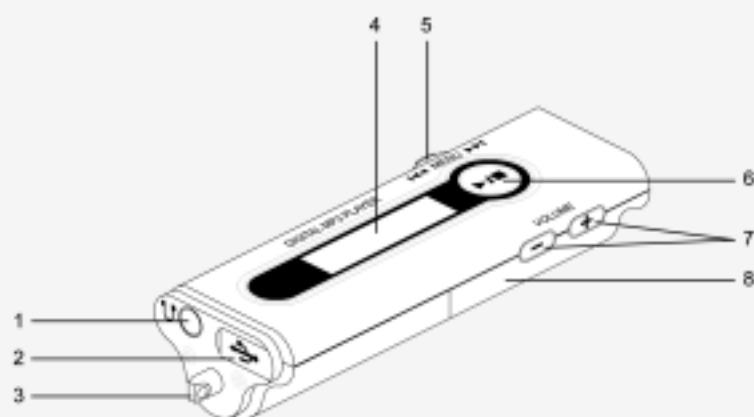
Battery

Do not insert battery when you don't use player for a long time.

! Note: Never disassemble, repair or remodel in person.

2

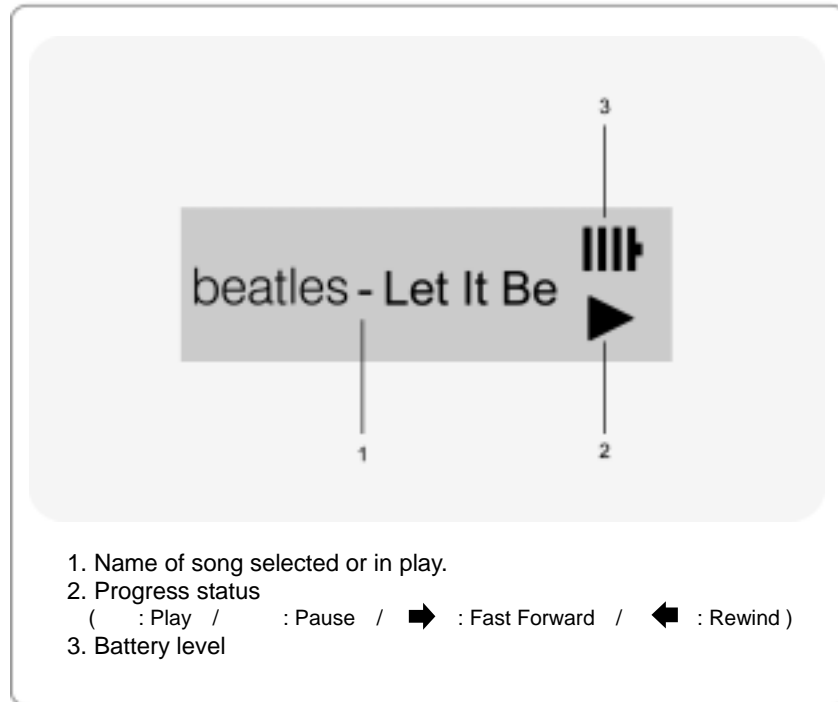
1. Name of Parts



- | | |
|--------------------------------|-------------------------------------|
| 1. Earphone Jack | 5. MENU Switch |
| 2. USB Port | 6. Power(on/off /Play/Stop) button |
| 3. Necklace connection hole | 7. Volume button |
| 4. Operation Status LCD window | 8. Battery cover |

2

2. Name of LCD Window Display



3

1. Install Manager Program

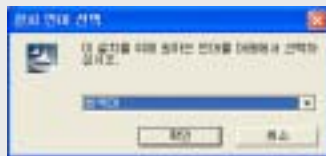
To install manager program, make sure that USB cable isn't connected to PC while you follow the steps below

Insert Install CD into CD-ROM drive, and the following screen will appear and installing will start.

(This explanation is an example> of **WIN XP**. If you are a user of other OS, visit and refer to our website.)

! Note: Insert install CD into CD-ROM drive only when you install program at the beginning, and then remove it after installing is finished.

- 1) Select language to select and press the "OK" button.



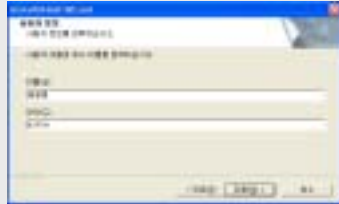
- 2) Click the "Next" button.



3

1. Install Manager Program

3) Enter user information and then click the "Next" button.



4) Click the "Next" button.



5) Click the "Next" button.



6) Click the "Finish" button.

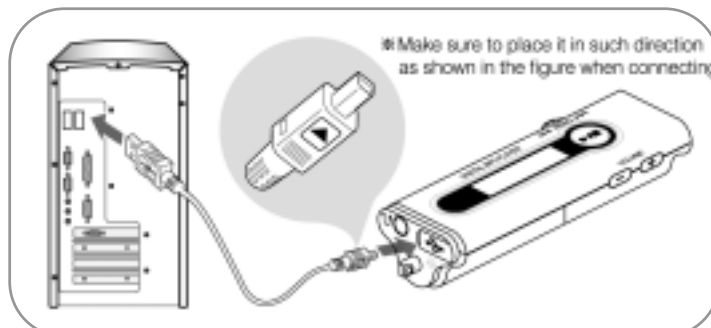


3

2. How to Connect Player to PC

To download MP3 file from PC, you should use USB cable to connect PC USB PORT and MP3 player.

(You should use USB cable provided when you purchase EZMP-2000.)



- 1) Connect the rectangle end of Universal Series Bus (USB) cable to USB port of PC.
- 2) Connect the square end of Universal Series Bus (USB) cable to USB port connection part of player.

! Note: Separate earphone from MP Player when you download or upload.
Turn off MP3 and remove the battery.

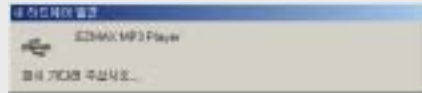
3

3. Install USB Driver

The following explanation is an example> of **WIN98**.
Since different figures may appear depending on OS of user PC, visit our website and find appropriate information.

1) Connect USB cable to MP3 player and USB port.

2) A message "New Hardware Found" automatically appears on PC screen.



3) If a message "(Unknown) 'EZMAX01.sys' file is required" appears, set the path as shown in the figure and check.



3

3. Install USB Driver

4) When you press the "Finish" button after file is copied, installing USB driver is finished.

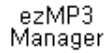
5) To check whether USB driver is properly set, double-click the "System" icon in [Start] - [Setting] - [Control Panel].

Click "Device Manager" Tab and click "+" of "Universal Series Bus (USB)" controller.

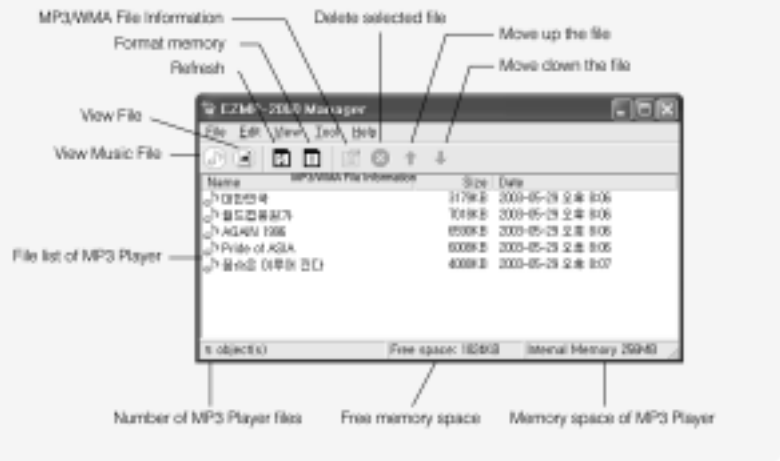


Note: When "EZMAX MP3 Player" appears, driver is successfully installed.

1. Description of Manager Screen



When MP3 player is connected with USB connection cable, it automatically reads the memory and displays the files on the screen displaying the memory..



2. Download(Transmit Music File from PC to MP3 Player)

- 




- Note:** MP3 / WMA file downloaded from Music Mode is prohibited from being upload by law.

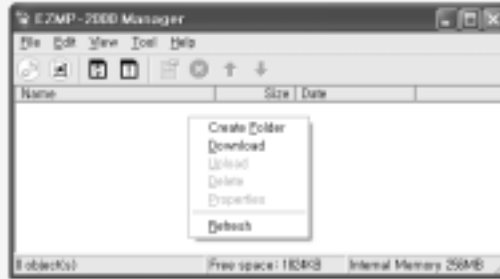
Note: MP3 / WMA file downloaded from Music Mode is prohibited from being upload by law.

4

3. Save File

You can save files(Ex. extension file, bmp, doc, zip, etc.) in the internal memory of MP3 Player without mobile storage device.

- 1) Click the "View File" icon () in the menu bar.
- 2) Right-click the mouse, select "Download", and then save the file you want to save from computer to MP3 Player.
To the contrary, if you want to transmit files in MP3 player to the computer, select "Upload" and transmit the file to the computer.



! Note: In the "View File" mode, downloaded MP3 / WMA file will not be played.

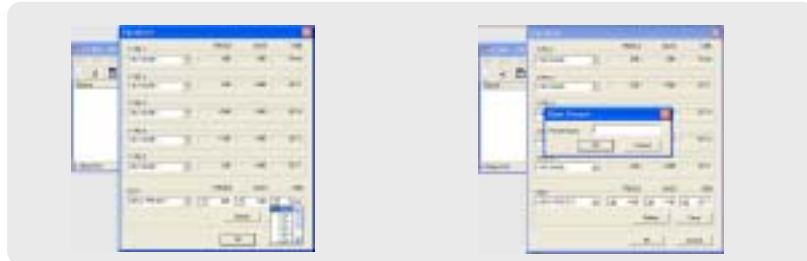
4

4. Set Equalizer

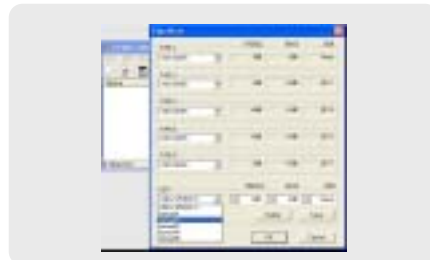
- 1) Select Tool→ Equalizer in the menu bar.

In Equalizer window, you can set various types of sounds such as TREBLE, BASS and DBB and save it in the name you want in the EDIT window.

(The following example shows that user sets TREBLE, BASS and DBB in the EDIT window, and saves in the name of "User Mode 1".)



- 2) You can select each type you set in TYPE-1, TYPE-2, TYPE-3, TYPE-4, TYPE-5 window as shown above to set the Equalizer you want.

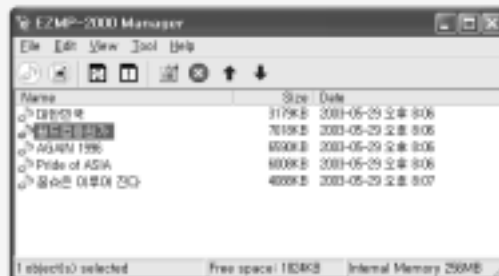


4

5. Set Play Order and Delete

1) Set Play Order

: Select the file you want and then click "  " or "  " button in the menu bar.






2) Delete MP3 / WMA File

: Select the file you want and click "  " in the menu bar.

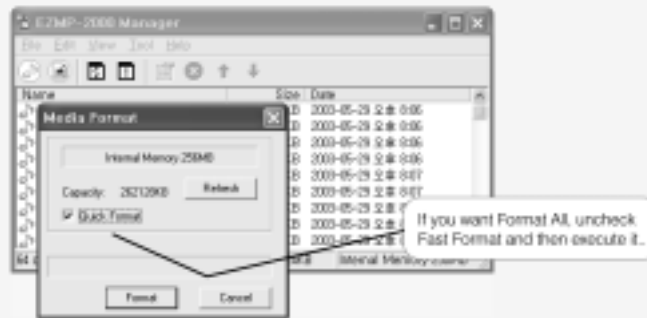
4

6. Format Flash Memory

All files(MP3/WMA file, effect sound setting file and other files saved by user) are all deleted when you select Format button(). If you delete MP3 file alone, select the file you want and click "  " button. If you want to initialize all memory, or manager program cannot recognize MP3 player, initialize memory with () button.

There are 2 kinds of format such as Fast Format and Format All. It supports fast format by default. Select and execute Format All as shown in the figure if user wants.

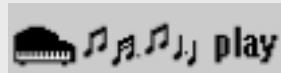
(You can listen to music with clearer quality if you use MP3 Player after executing Format All once in 2-3 months, and arranging internal memory.)



Power ON / Play(MP3, WMA)

If you press [POWER button] a little long, power will be turned on and automatically play music under the same as the environment where the previous music played(sound quality, music to be played, play mode, etc...).

If you press [Power button] again in Pause status, Play[] will start.

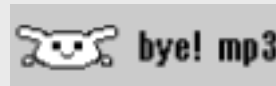
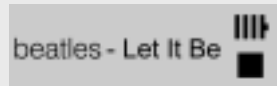


! Note: Play(Power ON) does not work, if there is no song downloaded in the memory. (PLAY) is displayed on the lower right of LCD in accordance with the mode selected by user so as to check the progress status.

Power OFF / Pause

If you press [POWER button] a little long, power will be turned off. At this time, the environment is saved inside and will be applied when power is turned on in the next time.

If you press [POWER button] while a file is played, it will become Pause () status. If you press [POWER button] again in Pause status, it will start playing [] again.



! Note: If there is no key operation for over 30 seconds in PAUSE status, power will be automatically turned off.

(PAUSE) is displayed on the lower right of LCD in accordance with the mode selected by user so as to check the progress status.

1) Volume Up



Press [+] button to volume up while a file is in play(stop) status.

vol +  17 

2) Volume Down





Press [-] button to volume down while a file is in play(stop) status.

vol -  13 

! Note: Volume consists of a total of 20 stages.

1) Select Next Track (Fast Forward)



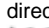
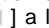
To select the next track, push it to [] direction while it is played. If you want to fast-forward, press [] a little long to select fast forward while it is played.

At this time, effect sound you selected in Manager Program will come out.



2) Select Previous Track (Rewind)



To select the previous track, push it as in the direction of [] while it is played. If you want rewind, press [] a little long to select rewind while it is played.

At this time, the effect sound you selected in Manager Program will come out



5

5. MENU MODE



The following functions are in menu mode.
If you press the MENU switch in the direction of the arrow as shown in the figure while it is in Play(Stop) status, the following screen will appear.

EXIT

Underline displays Progress(Selection) status.
Selection is moved when you click in the direction of the arrow

1) **PLAY Mode** (Default Setting : NORMAL)

PLAYMODE: NORMAL

: Play all songs once in an order

PLAYMODE: R. ONE

: Repeat the song selected alone

PLAYMODE: R. ALL

: Repeat all songs in an order

PLAYMODE: RANDOM

: Play all songs randomly without order

5

5. MENU MODE

2) EQ Mode (Default Setting : TYPE-1)

EQ :TYPE-1

EQ :TYPE-2

EQ :TYPE-3

EQ :TYPE-4

EQ :TYPE-5

You can save 5 types such that users could select one of them they want.

! Note: Users can directly enter each type at Edit window of Manager Program by adjusting TREBLE, BASS and DBB3. Each type is selected whenever pressing EQ switch. (Refer to 4-5. How to Set Equalizer)

3) **RESUME Mode** (Default Setting : TRACK)RESUME : TIME

: Listen from the song played last

RESUME : OFF

: Listen from the first song in the music file list

RESUME : TRACK

: Listen from the beginning of the song played last.

4) **SCROLL Mode** (Default Setting : LEV-3)SCROLL : LEV-1SCROLL : LEV-2SCROLL : LEV-3SCROLL : LEV-4SCROLL : LEV-5

It is to adjust the screen moving speed of LCD window.
"LEV-1" is slowest and "LEV-5" is fastest.

5

5. MENU MODE

5) **POWER Mode** (Default Setting : NORMAL)

<u>POWER</u> : <u>NORMAL</u>	:Operation status is always displayed on the LCD window.
<u>POWER</u> : <u>SAVING</u>	:LCD screen is turned off in 30 seconds after the last Key is input., when the next key is entered, operation status will be displayed on the LCD window.

! Note: If you set the POWER mode to "saving", you can use battery longer

6) **CONTRAST Mode** (Default Setting : LEV-3)

<u>CONTRAST</u> : <u>LEV - 1</u>	It is to adjust operation status brightness(contrast) of the LCD window. "LEV-1" is dimmest and "LEV-5" is darkest
<u>CONTRAST</u> : <u>LEV - 2</u>	
<u>CONTRAST</u> : <u>LEV - 3</u>	
<u>CONTRAST</u> : <u>LEV - 4</u>	
<u>CONTRAST</u> : <u>LEV - 5</u>	

7) **LIGHT Mode** (Default Setting : NORMAL)LIGHT : NORMAL

: Light is turned on for 10 seconds and off, after the last Key is input

LIGHT : BUNK

: Light On/Off repeats itself at the interval of 1 second.

LIGHT : EVER



: Always Light On

LIGHT : NEVER

: Always Light Off

8) **KEY-MODE Mode** (Default Setting : MUSIC)KEY-MODE : MUSIC

: Music Listening Mode

KEY-MODE : STUDY: This mode supports block repetition.
Press the menu switch [ , ] to designate the section to repeat

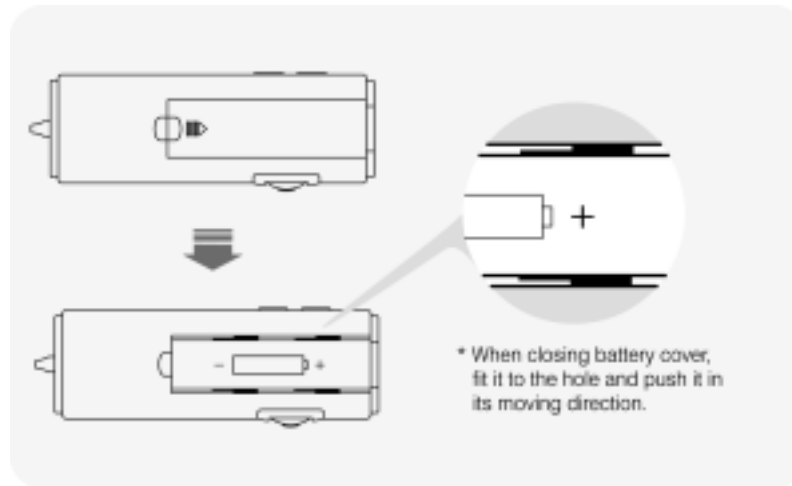
9) **VERSION Mode**A screenshot of a device's menu showing the word "VERSION" followed by a colon and a space, with a small cursor or arrow pointing to the right.

Display the current version of Firmware

10) **KEY LOCK Mode**A screenshot of a device's menu showing the words "KEY LOCK" in all caps.

If you push the Menu button for a few seconds,
all the keys is locked.
If you push another time, they're unlocked.

Open the battery cover and insert a “AAA” battery in accordance with its proper polarity [+], [-].



Check the followings if any problem occurs when you use products.

Key does not work?

- Check “+”, “-” polarity of battery.
- Check the remaining level of battery.

Cannot be downloaded?

- Check whether USB cable is properly connected between player and PC.
- Check whether USB driver is properly installed.
- Check whether empty space of memory is sufficient.

Strength of sound is not constant?

- When you make an audio CD or WAV file as MP3 file using MP3 encoder software, the strength of sound played in the player may not be constant depending on the strength of sound.

When well-worked player is not recognized?

- When well-worked player is not recognized in the manager program, check whether USB drive in the device manager is well accepted as “EZMAX MP3 Player” and if it is accepted as another name, check the cable connection status again and then start manager program again.

Memory Capacity	Internal memory 64MB/128MB/256MB
PC Interface	USB 1.1
Maximum speed of file transmission	4Mbps
DISPLAY	LED BACKLIGHTING GRAPHIC LCD
Power	DC 1.5V
Maximum output of earphone	4mW + 4mW (16Ω)
Signal to Noise ratio	> 85dB
Battery	AAA size x 1
Range of frequency	20Hz ~ 20kHz
Distortion ratio	< 0.1%
Weight	22.5g (Excluding battery)
Maximum time of continuous usage	About 40 hours
Dimension	28 (Width) x 83(Length) x 19.5(Height) mm
Recording music format	MP3 / WMA (Refer to next page)

* Specification and appearance of this product are subject to change without notice for an improvement of performance.

1) MPEG1, MPEG2, MPEG2.5 (all sampling frequencies, all bit rates)

2) WMA (High Rate defined by Microsoft)

Sampling Frequency	Bit rate (bps)
48 kHz	128k, 160k, 192k
44.1 kHz	48k, 64k, 80k, 96k, 128k, 160k, 192k
32 kHz	48k, 64k
22.05 kHz	32k

If you want latest information about updated Manager or MP3 player, visit our website.

- Homepage: www.ezmax.co.kr
- Address : # 302, Keumbong Techno Valley, 59-3 Dangeong-dong, Gunpo city, Gyeonggi-do
- Tel : 031-457-9184
- Fax : 031-457-9187
- e-mail : webmaster@ezmax.co.kr

! Note: If you want A/S due to some breakdown, you can visit our main office and receive it, or send mail(registered mail and home delivery). But, please note that we cannot give receiver-pay service.

Warranty

We hereby certify as follows:

1. This product is manufactured through strict quality control and inspection process.
2. You can receive free A/S for 1 year after purchase if the product with warranty period is out of order. (If it falls under the case of paid service in this written warranty even if it is within warranty period, you should pay.)
3. This warranty is domestically valid.
4. Make sure to present this warranty if this product requires repair.
5. Keep this warranty carefully since it is not reissued.
6. If this product is out of order, contact the branch office you purchased the product.

Product Name	
Model Name	

Date of Purchase		Warranty Period	Year
Branch Store			Price
Checked by Branch Store			Won
Tel			

Customer	Address	
	Name	
	Tel	

Make sure to make this filled out when you purchase the product.

NOTICES TO USER

This device complies with Part 15 of the FCC Rules. Operation is subject to the following two conditions:

(1) this device may not cause harmful interference, and (2) this device must accept any interference received, including interference that may cause undesired operation.

FCC WARNING

This equipment generates or uses radio frequency energy. Changes or modifications to this equipment may cause harmful interference unless the modifications are expressly approved in the instruction manual. The user could lose the authority to operate this equipment if an unauthorized change or modification is made.

INFORMATION TO THE USER

This equipment has been tested and found to comply with the limits for a Class B digital device, pursuant to Part 15 of the FCC Rules.

These limits are designed to provide reasonable protection against harmful interference in a residential installation.

This equipment generates, uses and can generate radio frequency energy and, if not installed and used in accordance with the instructions, may cause harmful interference to radio communications. However, there is no guarantee that the interference will not occur in a particular installation. If this equipment does cause harmful interference to radio or television reception, which can be determined by turning the equipment off and on, the user is encouraged to try to correct the interference by one or more of the following measures:

- Reorient or relocate the receiving antenna.*
- Increase the separation between the equipment and receiver.*
- Connect the equipment to an outlet on a circuit different from that to which the receiver is connected.*
- Consult the dealer for technical assistance.*