

DIGITAL AUDIO PLAYER

User's Guide



Copyright © 2005 EZMAX. All rights reserved.

Advance permission of EZMAX is required to use User's Guide, photos, the related documents and software of the product. Any violation may follow the legal measures.

The contents of the User's Guide are subject to change without prior notice for further improvement of the product.

EZMAX

<http://www.ezmax.co.kr>

FCC Compliance Statements

Note: This equipment has been tested and found to comply with the limits for a Class B digital device, pursuant to part 15 of the FCC Rules. These limits are designed to provide reasonable protection against harmful interference in a residential installation. This equipment generates, uses and can radiate radio frequency energy and, if not installed and used in accordance with the instructions, may cause harmful interference to radio communications. However, there is no guarantee that interference will not occur in a particular installation. If this equipment does cause harmful interference to radio or television reception, which can be determined by turning the equipment off and on, the user is encouraged to try to correct the interference by one or more of the following measures:

- Reorient or relocate the receiving antenna
- Increase the separation between the equipment and receiver.
- Connect the equipment into an outlet on a circuit different from that to which the receiver is connected.
- Consult the dealer or an experienced radio / TV technician for help.

Warning : You are cautioned that any change or modifications to the equipment not expressly approved by the party responsible for compliance could void your authority to operate such equipment.

Table of Contents

Before Use

Product & Accessories	2
PC System Requirements	3
Safety Precautions	4
Features	5

Designation of Parts

Front/Rear View of the Product	8
Side View of the Product	9
Function Icons in Display	10

Preparation

Connecting Player to PC.....	11
Installing USB Driver.....	12
Using as a Removable Disk Unit.....	21
Disconnecting USB Cable.....	24
Installing Transcoder.....	26
Using Transcoder	27
Upgrading Firmware.....	31

Basic Functions

Basic Operation	34
Power On/Off	37
Playback Music File	38
Using Navigation	39
Playback Bookmark List	42

View Image File	43
View Text File	44
Playback Motion Picture	45
Recording/Playback Voice	46
Encoding/Playback MP3	47
Listening to the FM Radio	51
Recording/Playback FM Radio	54

Function Menu

Main Menu	55
Play Mode	56
Sound Mode.....	58
Display Mode	60
Record Mode.....	62
Timer Mode.....	60
Delete Mode.....	67
System Mode	68
Playback Mode.....	72

Others

Charging Built-In Battery	74
HOLD Mode	75
Troubleshooting	76
Product Specification	78

Products & Accessories



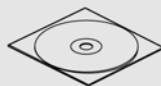
MP3 Player



Earphone



User's Guide



Program CD



USB Cable



Line in Cable



Neck Strap



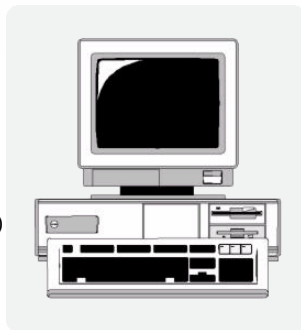
Carrying Case

!NOTE: Accessories are subject to change without a prior notice for further improvement of the product performance and quality.

PC System Requirements

Basic requirements should be satisfied to use this Player on your PC.
Make sure to check the following recommendations before its use:

- Pentium 200MHZ or above
- Windows 98SE / ME / 2000 / XP
(Windows 98SE - Install Driver)
- Mac OS 9.0 / 10.0
- USB 2.0 Port
(Requires Pentium III 1GHZ or above.
Not supported by some mainboard.
Windows XP Service Pack 1 must be installed.)
- CD-ROM Drive
- Hard Disk Space 20MB or above
(An additional capacity may be required
to save the music files.)
- 64MB RAM or above



!NOTE: Memory spaces available may be less than those indicated above since the firmware uses some portions of the memory available to your PC for the operation by its system.

Safety Precautions

Listening to Music...

The output class of the product guarantees the best possible sound of the mid-size volume. As the high volume for a long time may damage the hearing, listen to music in moderate volume.

Do not exposure to the strong shock or vibration

Please take good care of handling the product and accessories. Dropping on the floor or giving a shock may result in a serious damage of the product

Storing the Product...

Avoid storing in the extreme change of temperature, high humidity and the strong magnetic field.

Cleaning the Product...

The chemical may discolor or damage the surface of the Player.
Use the soft cloth to gently clean the Player.

Warning: The Player uses a rechargeable built-in battery that may have a risk of heat, fire and explosion.

- Do not place the Player near a fire, flame or heating devices.
- Do not replace the battery.

(Contact the dealer or the maker, if necessary.)

Warranty period of the battery is 6 months from the date of purchase.

!NOTE: Do not dissemble, repair or remodel the product.

Features

Introducing a 260,000-Color Organic EL Display

260,000-color large organic EL graphic display provides a sound color vision.

Multi-Codec Player

Compatible with MP3, WMA, ASF (Audio), OGG (incl. Q10) and WAV formats.

Compatible with the Motion Picture (Option)

Complete with the MPEG 4 Player with motion picture support

Image and Text Viewer

A function of an electronic photo album and an electronic book to view an image file (.jpg or .bmp) or a text file (.txt) on the display

FM Radio

Conveniently enjoy the FM radio with a variety of functions such as a manual/automatic frequency search, automatic tune to the radio station, and the station preset.

Voice Recording

The superior sound quality voice recording function allows the clear recording in the conferences and lectures.

Features

Direct Encoding

Convert the external sound and the FM radio broadcasting into the audio file.

Compatible with the Removable Disk Unit

Upon connection to the PC, it is recognized as a removable disk unit to upload or download files without using a separate Manager program.

Introducing a High Sound Quality 3D Sound MEX (Magic Expander)

Enjoy the dynamic 3D sound diffusion that does not tire your ears even after a long listening.

Alarm Clock

Complete with a digital clock that shows the local time and can be used as a alarm clock.

Repeat Section

You can set the section (A↔B) that you want to repeatedly listen to. This function is useful for a language study.

Features

Easy Playback and Deletion

A Navigation function allows an easy playback and deletion.

Electronic Photo Album

.jpg files saved in the 'LOGO' folder appear as a background image during the playback. You can make photo albums.

Preset Equalizer

You can produce your own sound quality with the user-defined EQ and 5 standard EQs, including Normal, Classic, Rock, Jazz and Pop.

Compatible with USB 2.0

USB 2.0 provides the maximum speed up to 48Mbps. USB 1.1 is also supported.

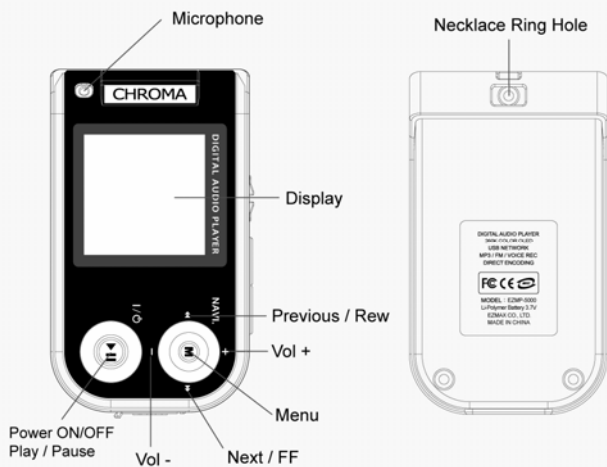
Firmware Upgrade

User can easily upgrade firmware to add/change/improve functions and performances of the Player. Always enjoy the music with its latest version of performance.

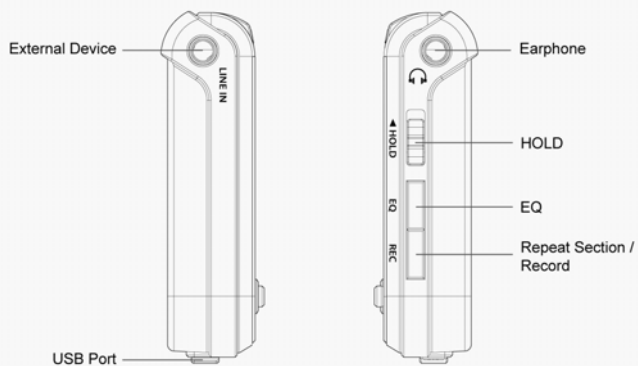
Rechargeable Battery and USB Charging

A built-in battery rechargeable by the USB allows a longer playing.

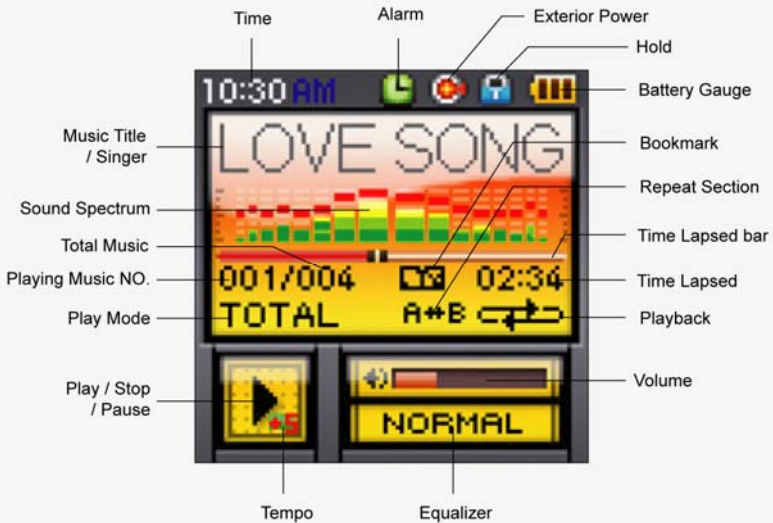
Front/Rear View of the Product



Side View of the Product



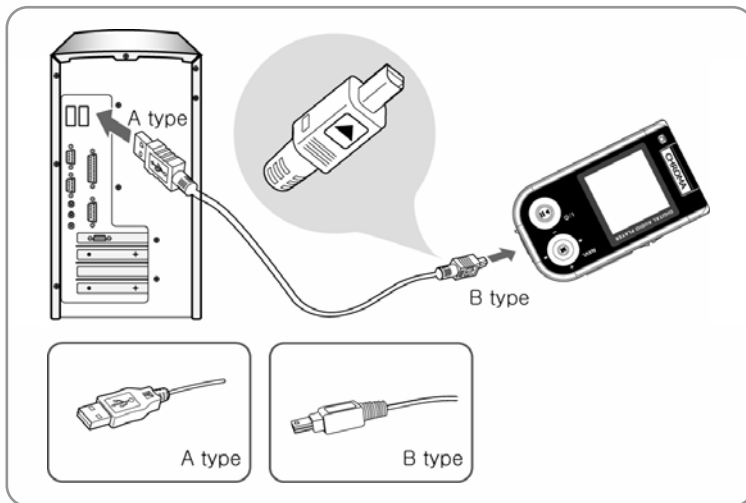
Function Icons in Display



Connecting Player to PC

To download music files (MP3/WMA/AS/OGG) from the PC, use USB cable to connect the MP3 Player to the USB port of the PC.

(Make sure to use only USB cable supplied with the Player.)



Connect "A" (large) to the USB port of the PC.

Connect "B" (small) to the USB port found when opening USB port plug on the Player.

Installing USB Driver

Connecting USB cable to the Player shows the message "Wait" on the display of the Player.



Before the installation

After the installation

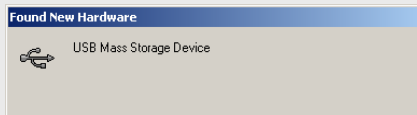
- 1 Follow the instruction below for the PC of which OS is one of the Windows ME, Windows 2000 and Windows XP.

A screen appears with a message "New hardware is found" on the PC as shown below.
Follow the instruction to install the driver.

The installation may automatically be completed without showing the installation screen depending on the PC environment.

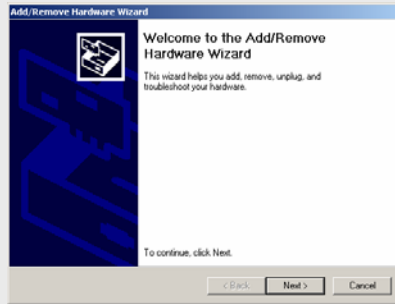
An example here is for the WINDOWS 2000.

- 1) A message "Found New Hardware" appears.



Installing USB Driver

- 2) The “Add/Remove Hardware Wizard” is automatically started on the PC. Click ‘Next’.

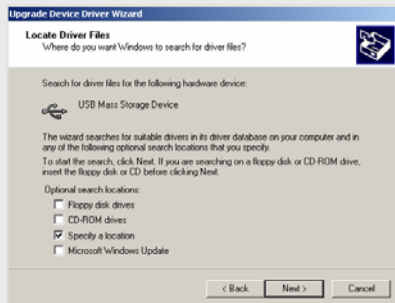


- 3) In the “Install Hardware Device Drivers,” select “Search for a suitable driver for my device (recommended),” and then click ‘Next’.



Installing USB Driver

- 4) Select "Specify a location" for the Optional Search Locations, and then click 'Next'.

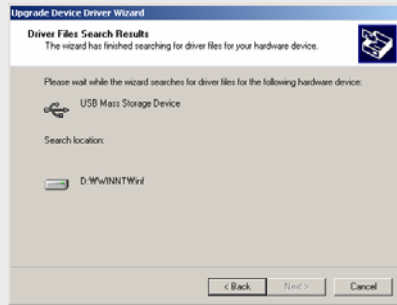


- 5) If "Copy manufacturer's files from:" is C:\Winnt\Inf or C:\Windows\Inf, click 'OK'. If the file is not in the C:\Winnt\Inf or C:\Windows\Inf, use 'Browse...' to select.



Installing USB Driver

- 6) In the “Driver File Search Results,” click ‘Next’.



- 7) Click ‘Yes’ to continue the installation of the USB Mass Storage Device.

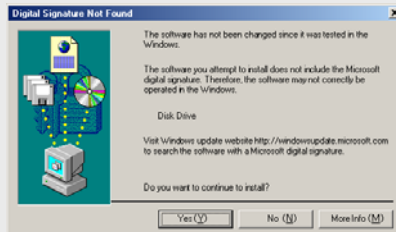


Installing USB Driver

- 8) Click 'Finish' after completing the upgrade of the USB Mass Storage Device.

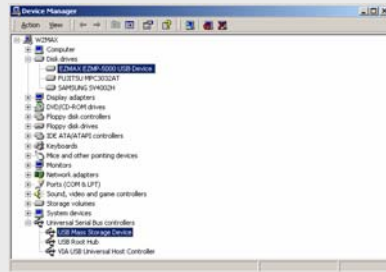


- 9) Click 'Yes' to continue the installation of the disk drive.



Installing USB Driver

- 10) Click [Start] – [Setting] – [Control Panel] to open “System” icon, and then click “Hardware” – “Device Manager” tab to check if USB driver is properly installed.



Note: The example of installing a driver above applies to a computer which adopts a removable disk for the first time. The specific installing process varies among users' PC environments. In the event of the two devices in Device Administrator or the message “READY” being shown as above, the driver has been successfully installed. It takes some 30 ~ 60 seconds to install the driver among various PC's.



Installing USB Driver (WIN98 SE)

2 Windows 98SE will not support a removable disk drive. You shall install our Win98SE Driver to use under Windows 98SE.

- 1) Do not connect the USB cable to the Player until the following is completed.
- 2) Insert the installation CD into the CD-ROM drive.
- 3) Execute the file "setup.exe" under Win98SE_Driver folder to install the driver.



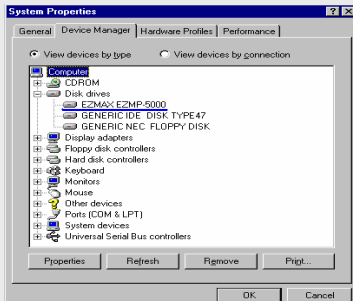
- 4) Click "Next" or "OK" on successive windows as you can see.



- 5) Connect the player to the USB cable if the installation has been completed.

Installing USB Driver (WIN98 SE)

- 6) Click [Start] – [Setting] – [Control Panel] to open “System” icon, and then click “Hardware” – “Device Manager” tab to check if USB driver is properly installed.



Note: The example of installing a driver above applies to a computer which adopts a removable disk for the first time. The specific installing process varies among users' PC environments. In the event of the two devices in Device Administrator or the message "READY" being shown as above, the driver has been successfully installed. It takes some 20 ~ 30 seconds to install the driver among various PC's.



Installing USB Driver (Confirmation)

The installation of the USB driver is followed by connecting the USB cable of PC to the Player to execute "My Computer" or "Windows Explorer", when you can see "Removable Disk" in My Computer or the message "READY" on the display of the Player. If then, you can enjoy the Player. If not, you should check Device Manager; in case you can't see **"EZMAX EZMP-5000 USB Device"** in Disk Drive of Device Manager and **"USB Mass Storage Device"** of USB Controller (except for Windows 98SE), or in case there appears a yellow exclamation mark(!) or "Unknown Device", the driver hasn't been normally installed. You should re-install it.

When re-installing the driver, delete the mark (!) or "Unknown Device" with the Player connected to the USB cable. And then repeat "USB Driver Installing". When it doesn't work normally In spite of that, you can refer to our website or contact us.

Using as a Removable Disk Unit

As the PC recognizes the Player as a removable disk unit, you can easily download, upload or delete the music files and folders in the Windows Explorer without a separate Manager program.

1 Copy File (Download)

- 1) Connecting the USB cable to the Player allows the Player to be recognized as a removable disk in the Windows Explorer.
- 2) Select the removable disk to access to the memory area of the Player.
- 3) Run one more Windows Explorer.



- 4) Select the file you want to save, and then:
 - ① Drag & drop the file to the removable disk.
 - ② Or click right mouse button to select Copy, and select the removable disk, and then click right mouse button to select Paste.
- 5) The file is copied to the removable disk, showing a graphic of the file transfer.

Using as a Removable Disk Unit

2 Export File (Upload)

- 1) Connecting the USB cable to the Player allows the Player to be recognized as a removable disk in the Windows Explorer.
- 2) Select the removable disk to access to the memory area of the Player.
- 3) Run one more Windows Explorer.
- 4) Select the file you want to export from the removable disk, and then:
 - ① Drag & drop the file to the disk to which you want to export.
 - ② Or click right mouse button to select Copy, and select a folder to which you want to export, and then click right mouse button to select Paste.

3 You can add or delete the folder in the Windows Explorer.

When you download/upload a music file to/from the Player, **please wait until Ready (or Charging) appears on the display**. If you disconnect the USB cable while Access appears on the display, the file may not properly be download/upload to/from the Player. Make sure to check the display (Ready) before disconnecting the USB cable.



Using as a Removable Disk Unit

4

Format Player

1) Formatting in the Windows

- ① Select the removable disk, and then click right mouse button to select Format (FAT32).
- ② Click Start (Do not disconnect the USB cable before completing the format. The Player may be damaged.)

2) Formatting in the Player

- ① Press MENU to enter into the MENU mode.
- ② Press MENU again to enter into the MAIN MENU.
- ③ Use VOL +/- button to select DELETE, and press MENU to enter into the delete mode.
- ④ Use VOL +/- button to select FORMAT, and press MENU.
- ⑤ Select "Yes," and press MENU to start formatting.



※ Please note that the formatting will irrecoverably remove all contents of the Player.

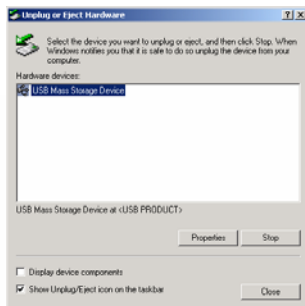
Disconnecting USB Cable

After completing the file transfer, follow the instruction below to disconnect the USB cable.

- 1 Click right mouse button on the removable hardware icon in the taskbar to select “Unplug or Eject Hardware.”



- 2 Select the device you want to disconnect, click “Stop.”



Disconnecting USB Cable

- 3 Click "OK" to confirm the device to be disconnected.



- 4 Click "OK," and then disconnect the USB cable.

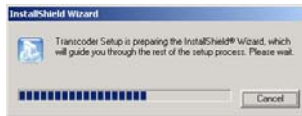


※ **Abnormally disconnecting the USB cable may cause the damage or failure to the Player.**
The order of music files shown in the Windows Explorer does not indicate the order of playback.

Installing Transcoder

1 Put the installation CD in the CD-ROM drive and then execute "setup.exe" in the folder "Transcoder".

2 You can see that TRANSCODER start being installed.



3 To continue to install, click "Yes" or "Next" as shown on a serial of windows.



Using Transcoder

© Be sure to install the following 3 codecs before using Transcoder:

- **Install a higher version than a version of DirectX 9.0.**

Download and then install a higher version than DirectX 9.0 from Download Center at the website www.microsoft.com.

- **Install WMV 9**

Download and then install a higher version than Windows Media Player 9.0 from Download Center at the website 'www.microsoft.com'.

- **Install Unified Codec**

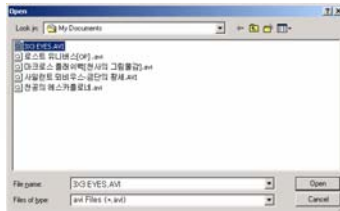
Download and then install the latest version of K-lit codec pack at the website 'www.free-codecs.com'.

1 Execute Transcoder. Then, you can see the following main screen.

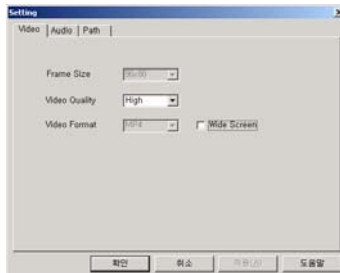


Using Transcoder

- 2** Click 'Open' to select and open a transcodable motion picture.

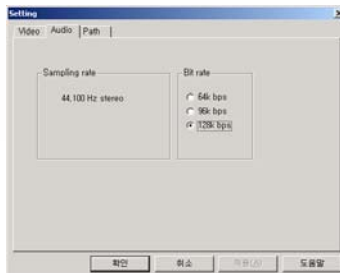


- 3** Click the tab 'Video' on the window as shown after clicking 'Setup'. And then set up the size and image quality of the motion picture.

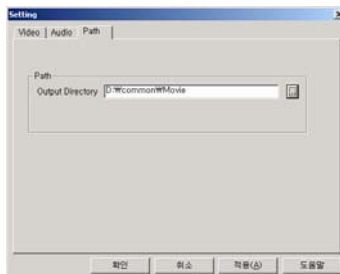


Using Transcoder

- 4** Click the tab 'Audio' on the window as shown after clicking 'Setup'. And then set up the sound quality of the motion picture.



- 5** Click the tab 'Path' on the window as shown after clicking 'Setup'. And then select or create a folder at which the transcoded motion picture will be saved.



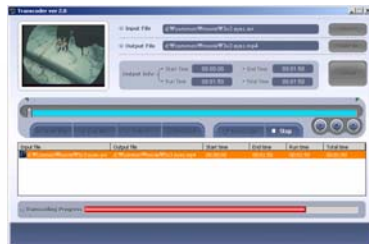
Using Transcoder

- 6** Click 'Save As' to set up a folder at which the transcoded motion picture will be saved.



- 7** If you click 'Transcoder', the following figure will be created for its transcoding.

※ The transcoded motion picture is saved in MP4 format, which can be played back from the player in the same way as any other music files.



Upgrading Firmware

Upgrade Firmware

- ◎ You can upgrade the Firmware to add/change the functions and improve the performance of the Player. The Firmware is an OS to drive the Player.

How to upgrade the Firmware is as follows:

(Upgrading the Firmware requires more than two scales of the battery gauge.)

- 1 Click "MAIN MENU → SYSTEM → SYSTEM INFO" to confirm the Firmware version of the Player.



In an example above, 0.14 indicates the Firmware version (ex. 0.21, 0.31 ...).

- 2 Visit the company website (www.ezmax.co.kr) to check if there is an upgraded version available for the Player (EZMP-5000). If yes, download and save in the PC.
(Please note that upgrading the Firmware with a version for the different model causes a serious failure.)

- 3 Use the USB cable to connect the Player with the PC, and open a Windows Explorer to access to the "Removable Disk."

Upgrading Firmware

- 4 Copy the downloaded file (**EZ5000.ROM**) to the removable disk in the same manner of downloading the music file.
(Download may not properly be completed until the message changes from "Access" to "Ready" on the display.)
- 5 Disconnecting the Player from the PC shows the message "F/W UPGRADE" on the display while upgrading, and the power is automatically turned off when the upgrade is completed.
(Make sure do not turn the power OFF the Player during the upgrade.)



Upgrade Font

- © Fonts are characters to show a file name, ID3 TAG information or the words of a song on the top part of the display during the playback. If no character appears on the display, you shall upgrade the Font file.

- 1 Use the USB cable to connect the Player with the PC, and open a Windows Explorer to access to the "Removable Disk."
- 2 Copy the **FONT.IWF** file in the FONT folder on the installation CD supplied with the Player to the removable disk.
- 3 After the message changes from "Access" to "Ready" on the display, disconnecting the Player from the PC shows the message "FONT UPGRADE" on the display while upgrading the font.



Upgrading Firmware

Upgrade Icon

- ◎ Icons are images appeared on the display. If no image appears on the display, you shall upgrade the icon file.

- 1** Use the USB cable to connect the Player with the PC, and open a Windows Explorer to access to the "Removable Disk."
- 2** Copy the **EZICON.DAT** file in the ICON folder on the installation CD supplied with the Player to the removable disk.
- 3** After the message changes from "Access" to "Ready" on the display, disconnecting the Player from the PC shows the message "ICON UPGRADE" on the display while upgrading the icons.



Basic Operation



1 DISPLAY

- Display the operating status of the Player.

2 PLAY

- Press and hold to turn the power on.
- In any mode, press and hold to turn the power off.
- In the NAVIGATION mode, briefly press to view File/Dir.
- Press to view jpg, txt and mp4 files.
- When listening to the music or the recorded file, briefly press to pause the music. Briefly press again to resume the music.
- When listening to the FM radio, briefly press to set the MUTE mode. Briefly press again to cancel the MUTE mode.
- During the record, briefly press to pause the recording. Briefly press again to resume recording.

Basic Operation

3 VOL +

- Press once at a time to increase the volume step by step (adjustable in 0-30 steps). Keep pressing to fast increase the volume.
- In the MAIN MENU, briefly press to enter into the previous menu item.

4 VOL -

- Press once at a time to decrease the volume step by step (adjustable in 0-30 steps). Keep pressing to fast decrease the volume.
- In the MAIN MENU, briefly press to enter into the next menu item.

5 MENU

- Briefly press to enter into the MENU mode.
- Press and hold to enter into the NAVIGATION mode.
- In the MENU mode, briefly press to select the present menu item, while press and hold to exit from the MENU.

6 ►►

- When listening to the music or the recorded file, briefly press to move to the next music, while press and hold to fast move within the present playback file. Although the speed is up to x3, the sound is still audible.
- In any mode, briefly press to move into the next menu item.
- In the FM RADIO mode, briefly press to increase the frequency step by step, while press and hold to automatically search the next station.
- In the FM PRESET mode, briefly press to move to the next preset number.

7 ◀◀

- When listening to the music or the recorded file, briefly press to move to the previous music, while press and hold to fast move within the present playback file. Although the speed is up to x3, the sound is still audible.

Basic Operation

- In any mode, briefly press to move into the previous menu item.
- In the FM RADIO mode, briefly press to decrease the frequency step by step, while press and hold to automatically search the previous station.
- In the FM PRESET mode, briefly press to move to the previous preset number.

8 REC

- During the playback, briefly press to specify the section 'A,' and briefly press again to specify the section 'B' for the Repeat Section. Briefly press again to cancel the Repeat Section.
- When listening to the FM radio, press and hold to start recording the FM radio broadcasting. Press and hold again to stop recording.
- When not listening to the FM radio, press and hold to start recording the sound through the LINE-IN cable in case the external device is connected to the Player, and press and hold to start recording the voice through the microphone in case no external device is connected to the Player.

9 HOLD

- Push the switch in the direction to the arrow to lock the operation of all buttons. Move the switch in the opposite direction to the arrow to cancel HOLD.
- If you turn on the power to the Player that is on HOLD, the power remains off immediately after showing a HOLD message on the display.

10 EQ

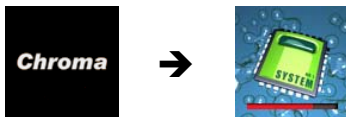
- During the playback, briefly press to enter into the Playback mode.
- During the playback, press and hold to add/delete the present file to/from the Bookmark List.
- When listening to the FM radio, briefly press to save the selected preset number, while press and hold to delete the selected preset number.

Power ON/OFF

Power ON

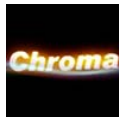
Press and hold PLAY button to turn the power on. Logo appears on the display, which is followed by a system loading icon. The Player is in the PLAY mode when the system loading icon disappears from the display.

- If you turn on the power to the Player that is on HOLD, the power remains off immediately after showing a short message.



Power OFF

Press and hold PLAY button to turn the power off immediately after showing the logo on the display. During the playback, briefly press to pause the music. You can set the timer to automatically turn the power off.



Playback Music File

© You can playback the music file saved in the Player.

Briefly press MENU button to enter into the MENU mode. Use **⏮ ⏭** button to select **MUSIC** menu, and then press MENU button again to play the saved music file.



Search File

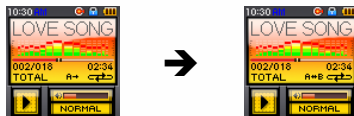
During the playback, press **⏮ ⏭** button to playback the previous/next file. In the STOP mode, press **⏮ ⏭** button to move to the previous/next file.

Search Part

During the playback, press and hold **⏮ ⏭** button to fast search the part you want. Release the button to return to the normal playback. Although the speed is up to x3, the sound is still audible.

Set Repeat Section

During the playback, press REC button on the beginning of the section you want to repeatedly listen (A→). Press REC button again on the end of the section you want to repeatedly listen (A↔B). The section is repeatedly played. Press REC button to cancel the Repeat Section.



Using Navigation

© In the NAVIGATION mode, you can easily find a file you want.

- 1** Press and hold MENU button to enter into the NAVIGATION mode.



- 2** Select the folder or file that you want to playback.
You can create and save folders and files in the ROOT folder.

- **⏮** : Move to the upper folder.
- **⏭** : Move to the subfolder and select/unselect the present file.
You can playback or delete the selected file (in blue) in the BROWSE mode.
- **VOL+/-** : Move the file or folder in the same folder.

In the SYSTEM folder:

- (1) **LINE**
- Playback the files encoded through the external line.
- (2) **LOGO**
- Store the image files for the electronic photo album.
- (3) **RADIO**
- Playback the files recorded the FM radio broadcasting.
- (4) **VOICE**
- Playback the files recorded the voice.

Using Navigation

3 Press PLAY button to playback the selected file or the files in the selected folder.

※ In the NAVIGATION mode, press and hold MENU button to cancel the NAVIGATION.

BROWSE

In the NAVIGATION mode, briefly press MENU button to enter into the BROWSE menu.



Cancel the BROWSE.



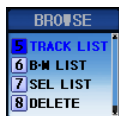
Playback the file selected by ►► button.



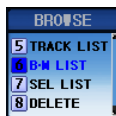
Select all files in the present folder.



Cancel all selected files

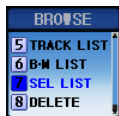


View all music files.
(excl. Line, Radio, Voice)

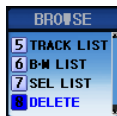


View all files in the
Bookmark List.

Using Navigation



View all selected files.



Delete present file or folder.



Delete the selected file.
(excl. Line, Radio, Voice)

Playback Bookmark List

© Playback the music files in the Bookmark List.

Briefly press the MENU to enter into the MENU mode. Use ◀▶ button to select the BOOKMARK menu, and then press MENU again to play the music file in the Bookmark List.



Add/Delete Bookmark

During the playback or stop, press and hold EQ button to add the present music file to the Bookmark List, showing a message "BOOKMARK ADD" on the display. Press and hold EQ button again to delete the present music file from the Bookmark List, showing a message "BOOKMARK DEL" on the display.

Save up to 50 files to the Bookmark List. If the Bookmark List is full, a message "BOOKMARK FULL" appears on the display.



View Image File

© View the saved image files (.jpg and .bmp).

View Image File

Press and hold MENU button to enter into the NAVIGATION mode, and select the folder containing the image file. In the image list, select the image file, and press PLAY button to view the image on the display. Briefly press VOL+/- button to view the next/previous image.

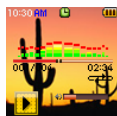
- Large image file may take longer to view the image on the display.
- You can create a new folder to save the image files.



View Image Slide Show

Save the image files to the LOGO folder in the SYSTEM folder to view groups of images as a slide show in 15 seconds interval. Press any key to exit from the slide show, and return to the PLAY mode.

- You must save the image files to the “LOGO” folder for a slide show.
- Slide show displays the JPG files only.



View Text File

© View the saved text files (.txt).

View Text File

Press and hold MENU button to enter into the NAVIGATION mode, and select the folder containing the text file. In the text list, select the text file, and press PLAY button to view the text on the display. Briefly press VOL+/- button to move up/down.



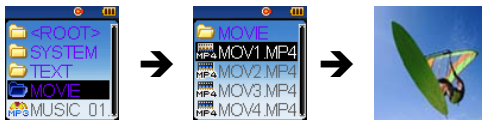
- During the playback the music, you can read the words of a song, information and electronic book.
- You can create a new folder to save the text files.

Playback Motion Picture

© Playback the saved motion picture files (MPEG4).

Playback Motion Picture

Press and hold MENU button to enter into the NAVIGATION mode, and select the folder containing the motion picture file. In the motion picture list, select the motion picture file, and press PLAY button to playback the motion picture on the display.



- **This function is an option. For further information about the motion picture, please contact the dealer.**
- If you click MENU while playing back a motion picture, the player is changed in the mode 'View Entire Screen. If you click once again, it turned to its original status.
- You can create a new folder to save the motion picture files.
- Motion picture plays back the MPEG4 files only. (Transcoder)

Recording /Playback Voice

Record Voice

During the playback or pause, press and hold REC button to start recording the voice. Press and hold again to stop recording.



During the record, briefly press PLAY button to pause the recording.
Briefly press again to resume recording.

- The file is recorded in the order of V001, V002, ..., and saved in the VOICE folder as an MP3 file.
- You cannot record the voice in the FM RADIO mode or when the external device is connected.
- The recording will stop if the memory is full.

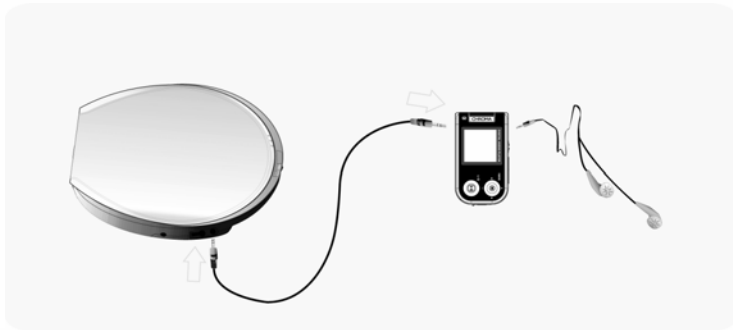
Playback the Voice File

In the NAVIGATION mode, select the VOICE folder in the SYSTEM folder, and then press PLAY button to playback the voice file.



Encoding/Playback MP3

Use the LINE-IN cable to connect the AUDIO OUT of the external device to the USB LINE-IN of the Player.



- The LINE-IN cable provided with the Player may not be compatible with some home audio units. You have to use the correct specification of the cable.
- Encoding is not possible without a LINE-IN cable.
- Excessively high or low volume of the external device may impair the encoded sound quality. Appropriately adjust the volume of the external device while encoding.

Encoding/Playback MP3

Set LINE-IN Mode

- 1** Briefly press MENU button to enter into the MAIN MENU.
- 2** Use VOL +/- button to select ENCODE, and then press MENU button.
- 3** In the ENCODE mode, select LINE SET, and then press MENU button.



- 4** MONITORING is to determine whether to set monitoring during the LINE-IN record. Use VOL +/- button to select ON/OFF.



Encoding/Playback MP3

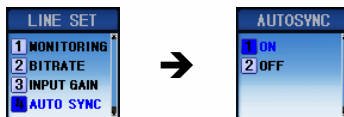
- 5** BITRATE is to set the sound quality.
Use VOL +/- button to select one of 48, 96, 128 and 192Kbps.



- 6** INPUT GAIN is to set the input level for the LINE-IN record.
Use VOL +/- button to select one of LOW, MIDDLE and HIGH.



- 7** AUTO SYNC is to determine whether to set automatic sync during the LINE-IN record.
Use VOL +/- button to select ON/OFF.



Encoding/Playback MP3

Encode LINE-IN

When the external device plays back the music you want, press and hold REC button to start encoding. Press and hold again to stop encoding.



During the encoding, briefly press PLAY button to pause the encoding. Briefly press again to resume encoding.

- The file is encoded in the order of L001, L002, L003, ..., and saved in the LINE folder as an MP3 file.
- Encoding will stop if the LINE-IN cable is disconnected.
- Encoding may not work at the low battery.

Playback the Encoded Music File

In the NAVIGATION mode, select the LINE folder in the SYSTEM folder, and then press PLAY button to playback the encoded file.



Listening to the FM Radio

During the playback or pause the music, briefly press MENU button to enter into the MENU mode. Use **◀◀ ▶▶** button to select FM RADIO menu, and press MENU button to enter into the FM RADIO mode.



- MONO or STEREO is automatically selected.

Manually search Frequency

Briefly press **◀◀ ▶▶** button to increase/decrease the frequency step by step.



Automatically Search Frequency

Press and hold **◀◀ ▶▶** button to automatically search the received frequency.



Listening to the FM Radio

Preset Frequency

Search the frequency you want, and briefly press EQ button to enter into the PRESET mode. Use **◀▶** button to select the preset number, and press MENU button to save the frequency to the selected preset number.

- Briefly press EQ button to exit from the PRESET mode.
- Up to 50 frequencies can be saved.



Delete Preset Frequency

In the FM RADIO mode, press and hold EQ button to enter into the PRESET mode. Use **◀▶** button to select the preset number you want, and press MENU button to delete the preset frequency.

- Press and hold EQ button to exit from the PRESET mode.



Listening to the FM Radio

Search Preset Frequency

In the FM RADIO mode, briefly press REC button to enter into the PRESET mode. Use ◀▶ button to search the preset frequency. Press REC button again to exit from the PRESET mode.

(If there is no preset frequency, run AUTO PRESET to automatically preset all received frequencies.)



- **PRESET Mode :** You can save your favorite stations in the memory of the Player.
- Some receptions may be bad in a weak signal area.
- Since the earphone line serves as a FM radio antenna, make sure to connect the earphone to the Player to search the frequency.

MUTE

When listening to the FM radio, briefly press to set the MUTE mode. Briefly press again to cancel the MUTE mode.



Recording/Playback FM Radio

Record FM Radio

When listening to the FM radio, press and hold REC button to start recording the FM radio broadcasting. Press and hold REC button again to stop recording, and return to the FM RADIO mode.



During the record, briefly press PLAY button to pause the recording. Briefly press again to resume recording.

- The file is recorded in the order of F001, F002, F003, ..., and saved in the RADIO folder as an MP3 file.
- Recording may not work at the low battery.

Playback the Recorded FM Radio Broadcasting

In the NAVIGATION mode, select the RADIO folder in the SYSTEM folder, and then press PLAY button to playback the recorded FM radio file.

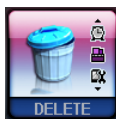
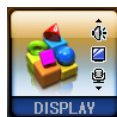


Main Menu

Briefly press MENU to enter into the MAIN MENU mode.

Use VOL+/- button to move between the menu items, and briefly press MENU (or ►►) button to select the menu.

Press and hold MENU button again to exit from the MAIN MENU mode.



- **PLAY MODE:** Set play mode.
- **SOUND:** Set EQ/3D mode.
- **DISPLAY:** Set display (incl. Language) mode.
- **ENCODE:** Set record mode.
- **WATCH:** Set time/timer record/alarm mode.
- **DELETE:** Delete Bookmark and set format.
- **SYSTEM:** Set system.
- **EXIT:** Exit from the MAIN MENU.

Play Mode

1
2

In the MAIN MENU mode, select PLAY MODE.

Use VOL+/- button to select the sub item, and then press MENU button.



Playing all pieces once in order.



Repeating one selected piece.



Repeating all pieces in order.



Playing all pieces in the present folder once in order.

Play Mode



Repeating all pieces in the present folder in order.



Repeating all pieces in no order



Playing first 10 seconds of all pieces in order.

Sound Mode

1
2

In the MAIN MENU mode, select SOUND.

Use VOL+/- button to select the sub item, and then press MENU button.



Normal sound without a sound effect



EQ sound for the classical music



EQ sound for the rock music



EQ sound for the Jazz music

Sound Mode



EQ sound for the pop music



User-defined EQ
(5 frequency domains adjustable up to 8 steps respectively)



© MEX is a general name of the 3D stereo sound effects developed by EMERSYS. There are three types of MEX: BASS, LITE and PRO.

MEX-BASS: Add a low frequency acoustic capability to provide a dignified sound.

MEX-LITE: Provide a full stereo sound.

MEX-PRO: Enjoy a full stereo sound with a low frequency acoustic capability.



- As the MEX considerably increases the volume, appropriately adjust the volume before selecting a MEX.
- The sampling frequency shall be 32Khz, 44.1Khz or 48Khz.

Display Mode

- 1** In the MAIN MENU mode, select DISPLAY.
- 2** Use VOL+/- button to select the sub item, and then press MENU button.

Set SCROLL Speed

Use VOL+/- button to set the text scrolling speed in one of 1, 2, 4, 8 and 16.



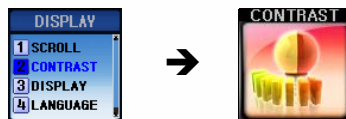
Set CONTRAST

Use ◀▶▶▶ button to set the contrast of the display.

Adjustable in 0-10 steps.

The higher number is, the brighter the display is.

- If you set the display brighter, the battery is run down faster.



Display Mode

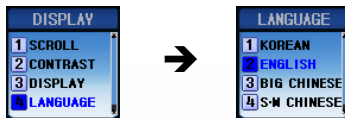
Set DISPLAY (Display Off Timer)

Use VOL+/- button to set the display off time in one of 10, 20, 30, 60 seconds and EVER. If there is no button operation for the set time, the display will automatically be off.



Set LANGUAGE

Use VOL+/- button to select the local language of the country. The language will immediately be changed.



Record Mode

- 1** In the MAIN MENU mode, select ENCODE.
- 2** Use VOL+/- button to select the sub item, and then press MENU button.

VOICE SET

Use VOL+/- button to set MONITORING and BITRATE for the voice recording.

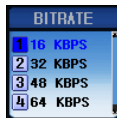
- A low BITRATE allows longer recording and low sound quality, while a high BITRATE allows shorter recording and high sound quality.

1) Set MONITORING



MONITORING is to determine whether to set monitoring during the voice record. Use VOL+/- button to select ON/OFF.

2) Set BITRATE



BITRATE is to set the sound quality during the voice record. Use VOL+/- button to select one of 16, 32, 48 and 64Kbps.

Record Mode

LINE SET

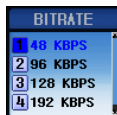
Use VOL+/- button to set MONITORING, BITRATE, INPUT GAIN and AUTO SYNC for the LINE-IN recording.

1) Set MONITORING



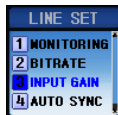
MONITORING is to determine whether to set monitoring during the LINE-IN record. Use VOL+/- button to select ON/OFF.

2) Set BITRATE



BITRATE is to set the sound quality during the LINE-IN record. Use VOL+/- button to select one of 48, 96, 128 and 192Kbps.

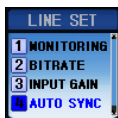
3) Set INPUT GAIN



INPUT GAIN is to set the input level for the LINE-IN record. Use VOL+/- button to select one of LOW, MIDDLE and HIGH.

Record Mode

4) Set AUTO SYNC

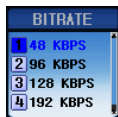


AUTO SYNC is to determine whether to set automatic sync during the LINE-IN record. Use VOL+/- button to select ON/OFF.

RADIO SET

Use VOL+/- button to set BITRATE for the FM radio recording.

Set BITRATE



BITRATE is to set the sound quality during the FM radio record. Use VOL+/- button to select one of 48, 96, 128 and 192Kbps.

Timer Mode

1

In the MAIN MENU mode, select WATCH.

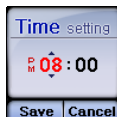
2

Use VOL+/- button to select the sub item, and then press MENU button.

TIME SET

Use ◀◀ ▶▶ and VOL+/- buttons to set the local time.

Use ◀◀ ▶▶ button to select TIME SET, and use VOL+/- button to set and save hour/minute. AM/PM is automatically selected when setting the hour.



R.S.V REC SET (TIMER RECORD)

Use ◀◀ ▶▶ and VOL+/- buttons to set the timer records for the FM radio broadcasting.

Use ◀◀ ▶▶ button to select R.S.V. REC SET, and use VOL+/- button to set and save frequency, time to start recording and time to end recording.



Timer Mode

ALARM SET

Use ◀◀ ▶▶ and VOL+/- buttons to set the alarm clock.

Use ◀◀ ▶▶ button to select ALARM SET, and use VOL+/- button to set and save hour/minute. AM/PM is automatically selected when setting the hour.

- The power will be automatically turned off in the set time.



Delete Mode

- 1** In the MAIN MENU mode, select DELETE.
- 2** Use VOL+/- button to select the sub item, and then press MENU button.

Delete BOOKMARK LIST

Use VOL+/- button to select YES or NO.
Select YES to delete all Bookmark Lists.



FORMAT

Use VOL+/- button to select YES or NO.
Select YES to format the memory.

- Please note that the formatting will irrecoverably remove all files from the memory.
- It may take long time to format in the MENU.



System Mode

1
2

In the MAIN MENU mode, select SYSTEM.

Use VOL+/- button to select the sub item, and then press MENU button.

Set AUTO PLAY

Use VOL+/- button to select ON or OFF.

Select OFF to set the Player in the PLAY mode when the power on.



Set AUTO OFF

Use VOL+/- button to select the power off time in one of 30, 60, 90, 120 and 180 seconds.

If there is no button operation for the set time, the power will automatically be off.

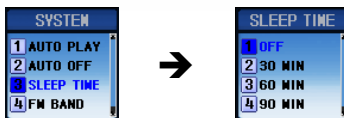


System Mode

Set SLEEP TIME

Use VOL+/- button to select the sleep time in one of 30, 60, 120 and 180 minutes.
The power will automatically be off in set time.

- If you do not want to set the sleep timer, select OFF.



Set FM BAND

Set the frequency range of the FM radio station by country.
Use VOL+/- button to select the FM band.



System Mode

Set DEFAULT VOLUME

Set the default volume at the time the power is on.

If the volume size set before the last power off was bigger than the default volume, the default volume is selected at the time the power is back on. If the volume size set before the last power off was smaller than the default volume, the set volume is selected at the time the power is back on.

Use VOL+/- button to set the default volume adjustable 1-20.



Set DEFAULT

Use VOL+/- button to select YES or NO.

Select YES to initialize all set values, including Volume and PLAY MODE, with the factory default values.

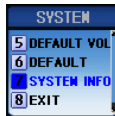


System Mode

View SYSTEM INFO

You can check the present version of the Firmware, total memory and available memory.

- Upgrade your Firmware with the latest version that is available in the website.



Playback Mode

© There are quick setup menus for the playback.

- 1** During the playback or pause the music file, briefly press EQ button to enter into the PLAY.
- 2** Use VOL+/- button to select the sub item, and then press MENU button.



Set SOUND

Set the sound effect.

Use VOL+/- button to select one of NORMAL, CLASSIC, ROCK JAZZ, POP, USER, MEX-BASS, MEX-LITE and MEX-PRO.

(For further details, see page 58 “Sound Mode.”)

Set PLAY MODE

Set the play mode.

Use VOL+/- button to select one of NORMAL, REPEAT ONE, REPEAT ALL, FOLDER NOR, FOLDERALL, SHUFFLE and INTRO.

(For further details, see page 56 “Play Mode.”)

Playback Mode

Set TEMPO

Set the tempo of the music file.

Use VOL+/- button to select one of -5, -4, -3, -2, 0, +2, +3, +4 and +5.

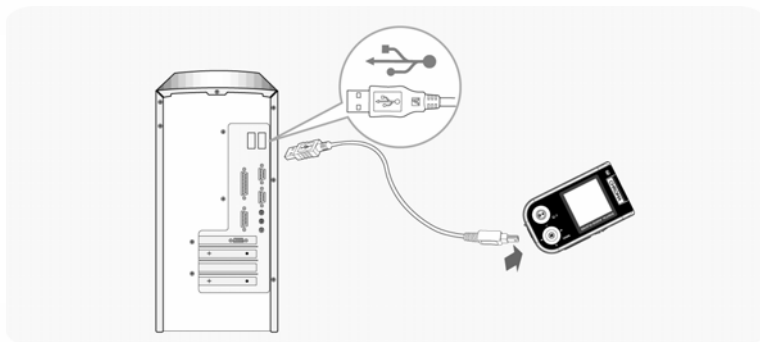
- “0 (red dot in the middle)” indicates the normal tempo of the music file.



Charging Built-In Battery

Charging with USB Cable

Connect the Player and PC with USB cable to charge the built-in battery. The battery is charged independently of the operation of the Player.




- It takes about 4 hours to fully charge the built-in battery in the STOP mode.
- LED blinks during the charging and lights up when such charging is done.

HOLD Mode


- © Use this function to prevent the misoperation by other buttons and an unnecessary battery use caused by the misoperation during the operation of the Player.

Set HOLD

Push the HOLD switch located on the side of the Player towards the arrow mark (HOLD).
All buttons are locked.  appears on the display.



Cancel HOLD

Push the HOLD switch in opposite direction to the arrow mark.
HOLD is cancelled.  disappears from the display.

Troubleshooting

☉ If the product fails, please first check the followings.

Power is not turning on.

- Charge the built-in battery.
- Check if HOLD is set in the Player.
(Push the HOLD switch in opposite direction to the arrow mark to cancel the HOLD.)

Unrecognizable characters are shown in the display.

- Check if the language is properly set in the LANGUAGE menu.
- Check if the contents of the ID3 Tag are incorrect in a Winamp program.

Radio station makes noise “boooo~” or “Ssaaaa~” and the reception is bad.

- Change the direction of the Player and earphone.
Please turn the power of the electric appliances off near the Player. If the noise is down, use the Player away from the electric appliances.
- As the earphone serves as an FM radio antenna, no earphone may cause the poor reception.

Troubleshooting

No sound or noise is heard during the playback.

- Check if the music file is stored in the memory.
- Check if earphone is properly plugged in. Or, check if its terminal is contaminated by the foreign substance.
- Check if the volume is set to "0."
- Damaged data makes noise or breaks off the sound in the MP3, WMA and OGG files. Replace it with other file to check if the data is damaged.

Cannot download files.

- Check if the USB cable is properly connected between the Player and PC.
- Check if the USB driver is properly installed.
- Check if the memory is sufficient.

Buttons are locked.

- Check if the Player is on HOLD.

!NOTE: When the operation is unexpectedly frozen, you have to reset the Player by pressing "MENU" and "EQ" button simultaneously.

Product Specification

Memory		Built-in Memory 128MB/256MB/512MB/1GB/2GB
Display		96 x 96 OLED
Compatible File Format		MPEG 1/2/2.5 Layer3, WMA, ASF(Audio), OGG Q10
Compatible File Bit Rate		8 Kbps ~ 320 Kbps (WMA/ASF: 32 ~ 192 Kbps)
Audio	Frequency	20 Hz ~ 20 KHz
	Earphone Output	18 mW + 18 mW (16 ohm)
	S/N Ratio	> 90 dB
FM Radio	FM Frequency	87.5 MHz ~ 108 MHz 76.0MHz ~ 108MHz(JAPAN)
	Earphone Output	18 mW + 18 mW (16 ohm)
	S/N Ratio	> 55 dB
	Antenna	Earphone Antenna
Language		Multi-Language
USB		USB 2.0
Maximum Play Time		Approx. 12 hours (Company Standard)
Distortion Rate		< 0.1%
Dimension		36.2(W) x 62.6(L) x 15.8(H) mm
Battery		LI-Polymer rechargeable battery
Weight		34g (with battery)

* The specification and appearance of the product are subject to change without prior notice for further improvement of the performance.