



3-WAY WALKIE TALKIE WITH BASE STATION INSTRUCTIONS

AGES
5+

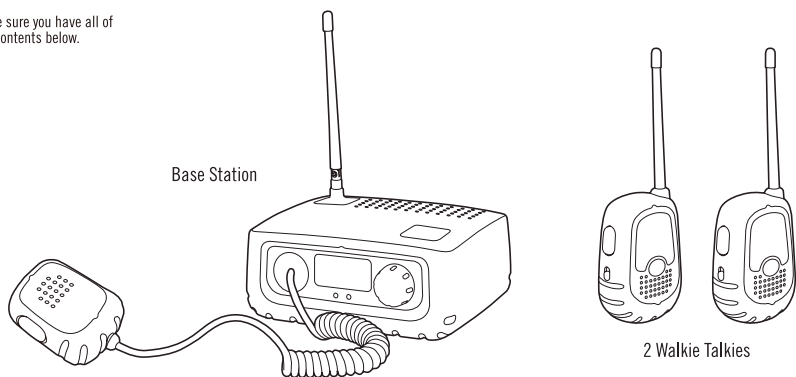
Congratulations on your purchase of the Discovery KIDS™ 3-Way Walkie Talkie with Base Station. Keep this instruction manual, as it contains important information for future reference.

SAFETY WARNINGS

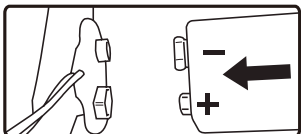
- Read all safety warnings before use.
- Use this product only for its intended purpose. Do not use attachments of any kind.
- This product has no user serviceable components. Do not disassemble.
- Inspect the product before every use. If the product appears damaged in any manner, discontinue use and discard immediately.

CONTENTS

Make sure you have all of the contents below.



BATTERY INSTALLATION



Using a Phillips head screwdriver, remove the bottom battery cover of the Base Station and Walkie Talkies. Insert 1 "9V" size battery (not included) in each in the polarity direction shown in the diagram. Replace the battery cover and tighten the screw.

BATTERY WARNINGS

- Do not mix old and new batteries.
- Do not mix alkaline, standard (carbon-zinc), or rechargeable (nickel-cadmium) batteries.
- Insert batteries using the correct polarity. Do not short-circuit the supply terminal.
- Remove batteries when not in use. Recycle or dispose of exhausted batteries according to federal, state, and local laws. Do not dispose of batteries in a fire - they may leak or explode.
- Only use manufacture specified battery(ies), charger(s) and/or adapter, if applicable, specified by the manufacturer.
- Always use, replace, and recharge (if applicable) batteries under adult supervision.

KEEP THIS PACKAGE FOR REFERENCE AS IT CONTAINS IMPORTANT INFORMATION.

OFFICIAL LICENSED PRODUCT

©2016 Discovery Communications, LLC. Discovery KIDS and the Discovery KIDS logo are trademarks of Discovery Communications, LLC, used under license. All rights reserved. discoverykids.com

©2016 MerchSource, LLC. All rights reserved. Distributed by MerchSource, LLC, Irvine, CA 92618.

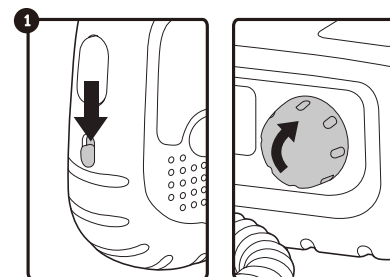
For customer support, please visit www.merchsource.com or call 1-800-374-2744.

Printed in China

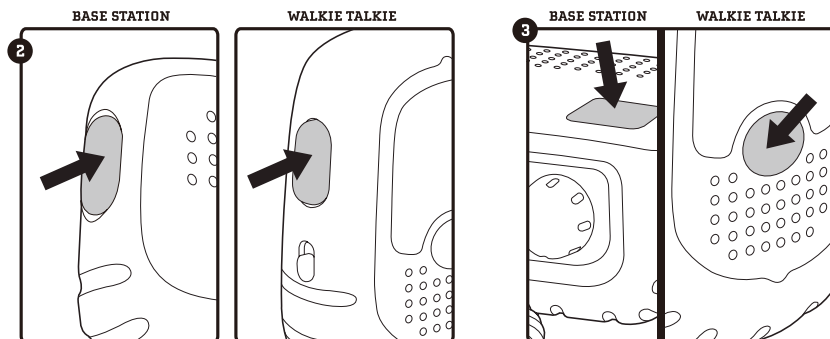
FOR AGES 5 AND UP. ADULT SUPERVISION REQUIRED.

WARNING:
CHOKING HAZARD-Small Parts.
Not for Children under 3 years.

HOW TO USE



Slide the Walkie Talkie Switch down to turn the Walkies ON. Rotate the Base Station Knob clockwise to turn Base Station ON. The knob is also used to control the volume of the Base Station.



Press and hold the Push To Talk Button to transmit sounds. Release the Push To Talk Button to receive signals. A squeaking noise will be heard if the base station and Walkie Talkies are too close.

While pressing the Push to Talk Button, press the Morse Code Button. Morse code instructions are found on each Walkie and on the Base Station.

STORAGE

- Put the product into its package when not in use and store neatly in a dry, cool location protected from direct sunlight.

WARNING: Changes or modifications to this unit not expressly approved by the party responsible for compliance could void the user's authority to operate the equipment

This device complies with Part 15 of the FCC Rules. Operation is subject to the following two conditions: (1) this device may not cause harmful interference, and (2) this device must accept any interference received, including interference that may cause undesired operation.

NOTE: This equipment has been tested and found to comply with the limits for a Class B digital device, pursuant to Part 15 of the FCC Rules. These limits are designed to provide reasonable protection against harmful interference in a residential installation. This equipment generates, uses and can radiate radio frequency energy and, if not installed and used in accordance with the instructions, may cause harmful interference to radio communications.

However, there is no guarantee that interference will not occur in a particular installation. If this equipment does cause harmful interference to radio or television reception, which can be determined by turning the equipment off and on, the user is encouraged to try to correct the interference by one or more of the following measures:

- ☒ Reorient or relocate the receiving antenna.
- ☒ Increase the separation between the equipment and receiver.
- ☒ Connect the equipment into an outlet on a circuit different from that to which the receiver is connected.
- ☒ Consult the dealer or an experienced radio/TV technician for help.

Printed in China