

## **DS-2292 Bluetooth Laser Mouse User's Guide**

**( BROADCOM solution )**

**Thanks for using this product, which is the latest development Bluetooth Optical Mouse. This creative and easy-to-use Bluetooth Mouse will bring you a whole new wireless life experience.**

### **System Requirement**

- Mouse compatible with standard Microsoft Mode.
- IBM compatible PCs running Windows Operating System which supports USB devices.

### **Main Features**

- Use BROADCOM 2042 Chipset with wireless Bluetooth 2.0 interface
- Use Avago A7530 laser IC, with resolution 1600DPI by default.
- Unique super energy saving mode, battery life longer than similar products by 50% to a maximum period of 6 months.
- With a USB retractable cable to charge battery when it is used up.
- Ergonomic design
- Come with particular power managing software, indicates the power capacity in Microsoft Windows System automatically
- Support battery turn off, it will protect the battery.
- Use the Bluetooth industry leading software solutions, WIDCOMM BTW (Microsoft officially designated software) Bluetooth software
- Built-in software solutions with Bluetooth human interface device and

comply with the standard version of the Bluetooth SIG Bluetooth 2.0

- Work with Windows 98, ME, 2000, Server 2003, XP and Vista
- AAA NiMh battery x2, voltage 1.2V.
- Frequency band: 2.4 - 2.4835GHz unlicensed ISM band
- Receiving sensitivity: -75bm (standard)

RF output power: up to 4bm as maximum, good for your health with lowest radiates

- Operation distance: 10m
- Workable environment: 0-45°C
- Putting environment:-10-85°C

Humidity: 20%-50%

#### **Precaution**

**! The optical mouse cannot work on a glass or mirror surface. Avoid operating this mouse on a glossy surface. Otherwise, this mouse may not operate normally.**

**! For consideration of saving battery power, it is strongly recommended to operate an optical mouse on a bright surface with fine texture to obtain lower power consumption of the Agilest high illumination LED. A very dark surface will cause higher power consumption.**

**! For a better transmission distance, avoid to use this device on a metal plate or desktop because a large surface of iron, aluminum. Operating on a metal may cause the transmission distance shorter.**

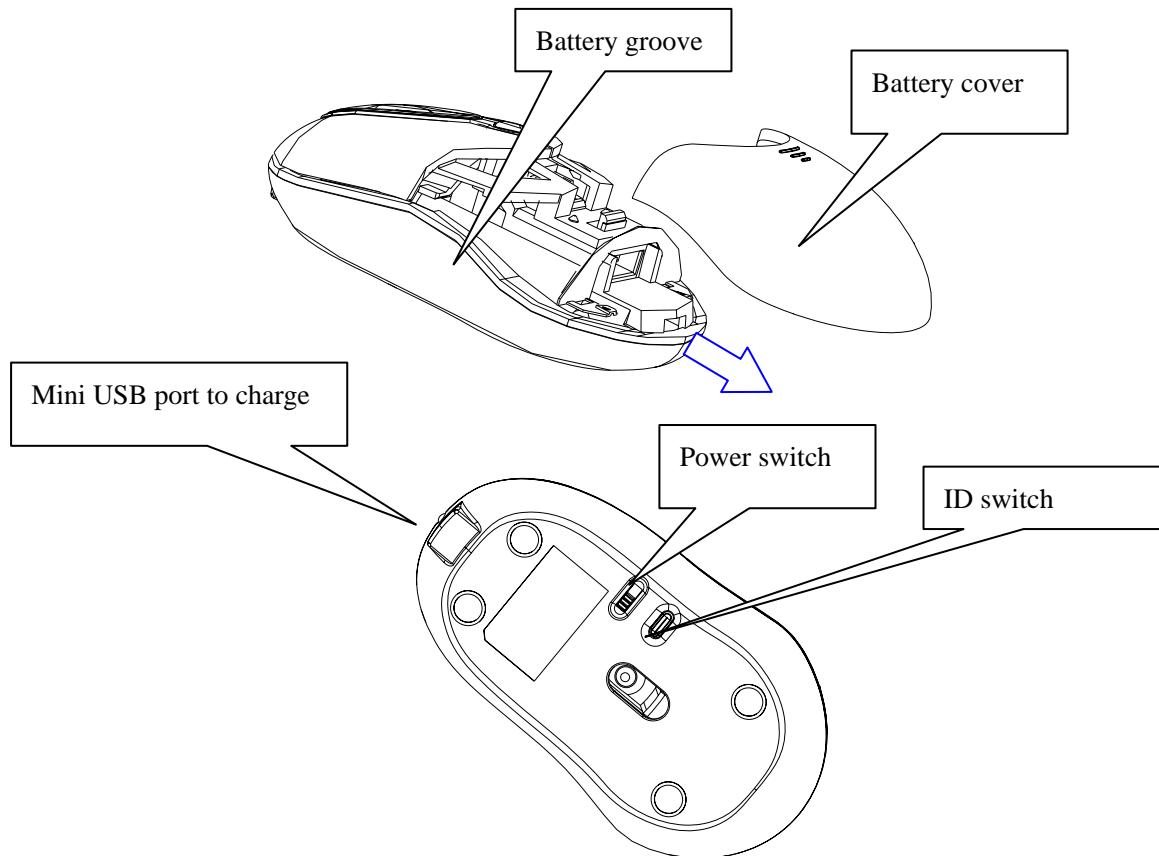
## **Installation Guide**

### **Step1. Inserting Batteries**

1. Prepare two new AAA rechargeable batteries
2. Press the button of the mouse upper cover and pull the battery cover

rearward

3. Please insert the batteries correctly according to the polarity marks of battery grooves.
4. Please see the bottom of this mouse, the Switch must be put on the “ON” position. And the light at bottom of mouse will be lightened.
5. Finish the battery setup..



Step2. Connecting mouse to the Dongle and drive,

If you built-in the Bluetooth (Dongle) drive or have already installed Dongle, please skim over this step.

Before you install the Bluetooth Mouse, please make sure that the Bluetooth Dongle has been installed. Software available like Widcomm, IVT or the Microsoft built-in software (can not connect to the headset).

Any solution connecting (Dongle) will be okay, e. g. BROADCOM, CSR, It will be finished setup when connect the USB port.

Connecting the mouse to the (Dongle) drive, please refer to (Dongle) user manual

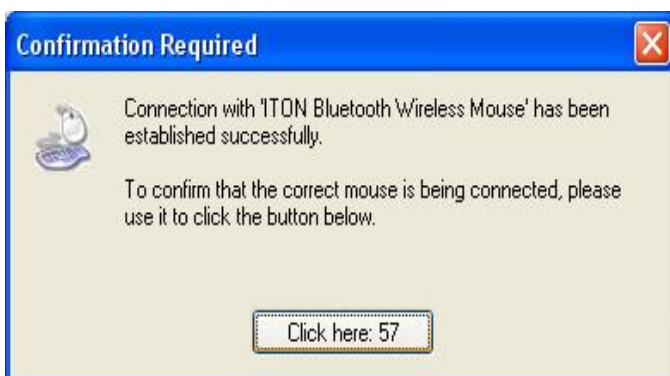
## Match Procedure

### A: Match on Widcomm (recommended)

1. Double click the Icon again  , “My Bluetooth Place” pops up; click “Bluetooth Setup---Bluetooth Setup Guide”. In the Setup Guild window, click next button.



2. Wait until the system found the mouse, select “Mouse”, Click “Next”.
3. Hint for connection, click “Click here”, now you can use your mouse at ease.



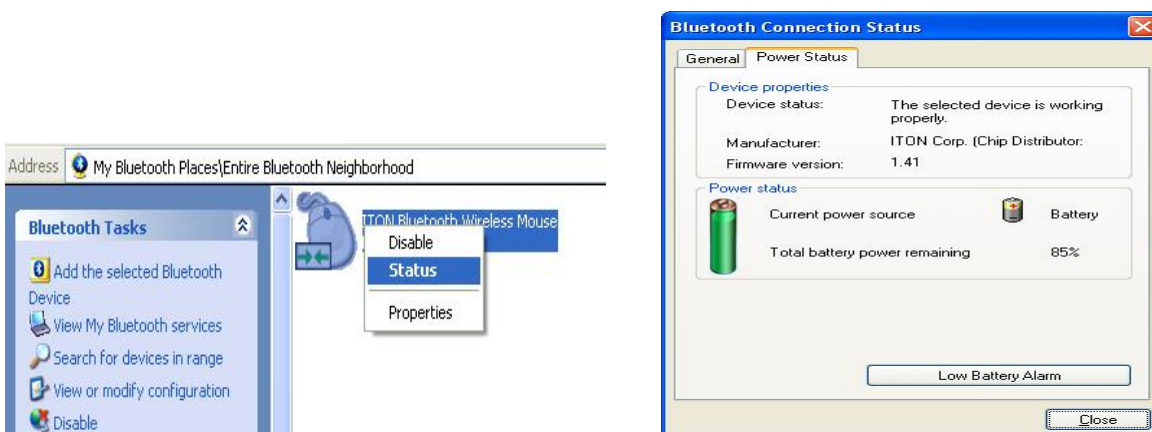
Note:

Not being used in 10 minutes, the mouse will transfer to the battery saving mode. Double click the left button will reactivate the mouse. Once connected, after you drag off the dongle or turn off the computer, double click the left button will reactivate the mouse, no need for reconnecting.

Also, if you press the Connect Button inadvertently or some abnormal disconnection occurs during use, please reconnect the mouse. If this is not available, please open the Bluetooth Dongle Software window, delete or disconnect the mouse (as the picture shows), then reconnect.



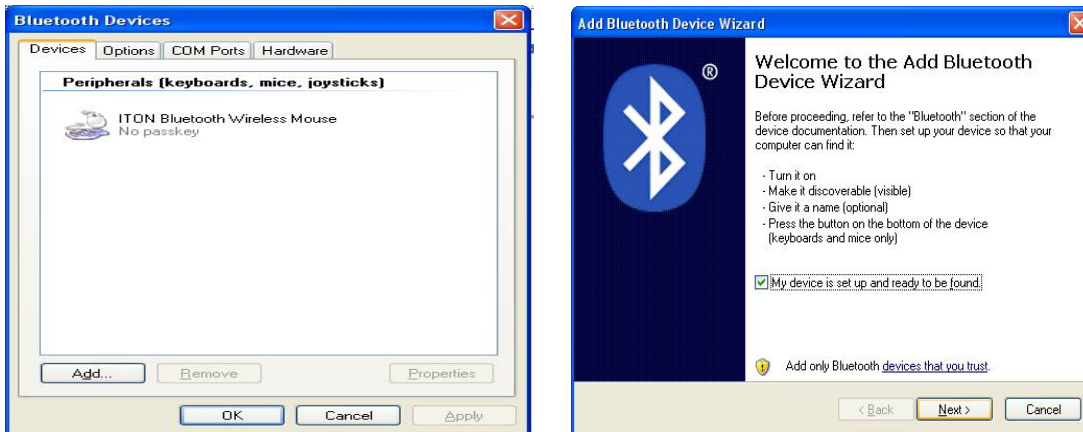
If you are using the Widcomm Bluetooth Software, click the right button of the mouse and select "Status", then you can check the power status of the batteries and setup alarm for shortage of battery.



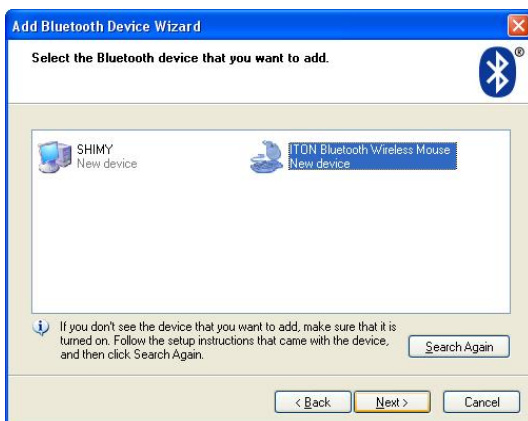
## B. Match on Microsoft built-in software

1. Make sure that the Bluetooth function has been activated. Double click the

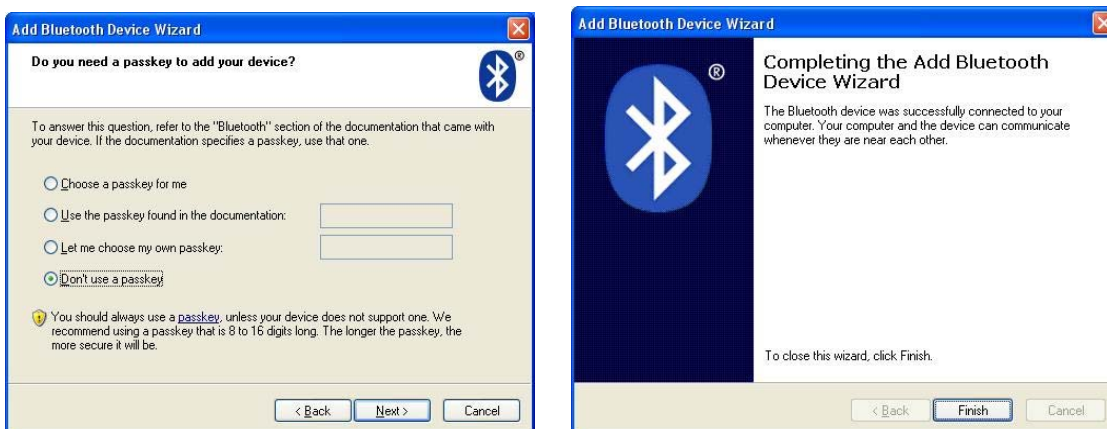
Bluetooth Icon on the Task Bar or in the Control Panel, open the “Bluetooth Management” window, click “Add”, tick off “facility is ready for searching”, click “Next”.



2. Wait till the Mouse is found, select mouse, click “Next”.

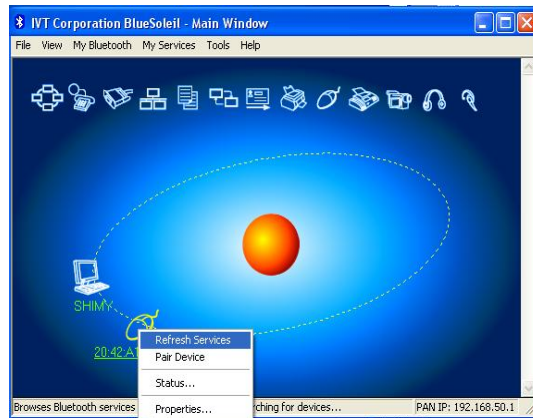
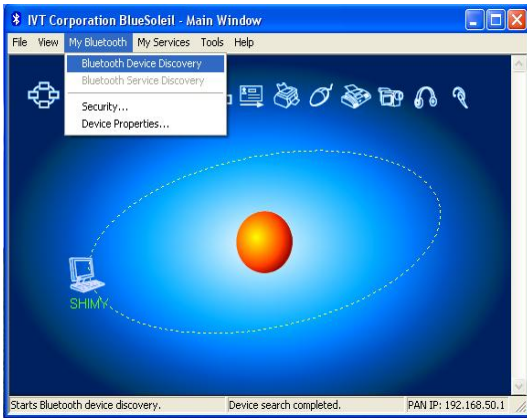


3 Select” No Password”, click “Next”, the system will install the new facility automatically.



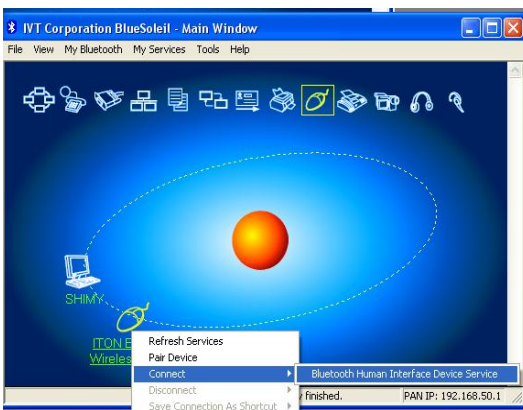
### C. Match on IVT Software

1. Make sure that the Bluetooth function is active. Double click the Bluetooth Icon, start the Management window, select “Search for Bluetooth facilities” or click the Round Ball in the middle of the window.



2. Click the Bluetooth Mouse traced, click the right button for “Refresh Service”.

3. Select the Bluetooth Mouse again, click the right button for “Connect-Bluetooth Input Service”, the system will automatically install the HID facility. After that you can use your Bluetooth Mouse at ease.



## FAQ:

If unable to connect the Bluetooth Mouse to the computer, or the Mouse work as normal, please try the steps below:

1. Before you install your Bluetooth Mouse, please make sure you have done

the Bluetooth Dongle installation procedure, and the Bluetooth facility is turned on.

2. Press and release the “connect” button on the bottom of Bluetooth Mouse. The red LED light on the bottom will be on (changes among High-light, Low-light and off, ready for the match).
3. Make sure that the Computer is connected to the Bluetooth Mouse. If they are matched to each other before, then under the Standby State, just double click the left button of the mouse. If the Match Button is turned on, please rematch the mouse to computer. If unable to rematch, kindly delete the Mouse Icon to erase the stored info of the mouse in the computer.
4. Make sure that the mouse is within the effective range---10M.
5. Make sure that there's no change of the Bluetooth facility. If anything changed, please kindly rematch.
6. If your Bluetooth facility is connected to other Bluetooth products, please kindly confirm that the speed of the Bluetooth facility is enough.
7. Please kindly check the batteries. If they are short of power, replace them with new ones.

### **Main Performance**

**Mouse size** : 94mm×56mm×36mm

**Weight:** 56±5g (batteries weight excluded)

**Materials of Mouse:** upper ABS

**Scrolling wheel:** PC+ silicon



**Operation Voltage:** 3V DC

**Operation Current:** <30mA, operate on a white paper.

**Sleep Current:** 10uA

**Transmit Range:** up to 10 meters

**Work Temperature:** -0~+45 degree

**Storage Temperature:** -10~+85 degree

**Humidity:** 20%-50%

### **Federal Communication Commission Interference Statement**

This equipment has been tested and found to comply with the limits for a Class B digital device.

Pursuant to Part 15 of the FCC Rules, these limits are designed to provide reasonable protection against harmful interference in a residential installation.

This equipment generates, and can radiate radio frequency energy and, if not installed and used in accordance with the instructions, it may cause harmful interference to radio or television reception, which can be determined by turning the equipment off and on, the user is encouraged to try to correct the interference by one of the following measures:

- Reorient or relocate the receiving antenna
- Increase the separation between the equipment and receiver.
- Connect the equipment into an outlet on a circuit different from that to which the receiver is connected

- Consult the dealer or an experienced radio/TV technician for help.

#### FCC Statement

1. This device complies with Part 15 of the FCC Rules. Operation is subject to the following two conditions:
  - (1) This device may not cause harmful interference.
  - (2) This device must accept any interference received, including interference that may cause undesired operation.
2. Changes or modifications not expressly approved by the party responsible for compliance could void the user's authority to operate the equipment.