

Bluetooth Keyboard User Manual

(Item No. : ET-3788)

Thank you for purchasing this Bluetooth keyboard. This keyboard is 78 function keys, support [Fn] key combination functions, innovative design, to bring you a new experience of wireless transmission.

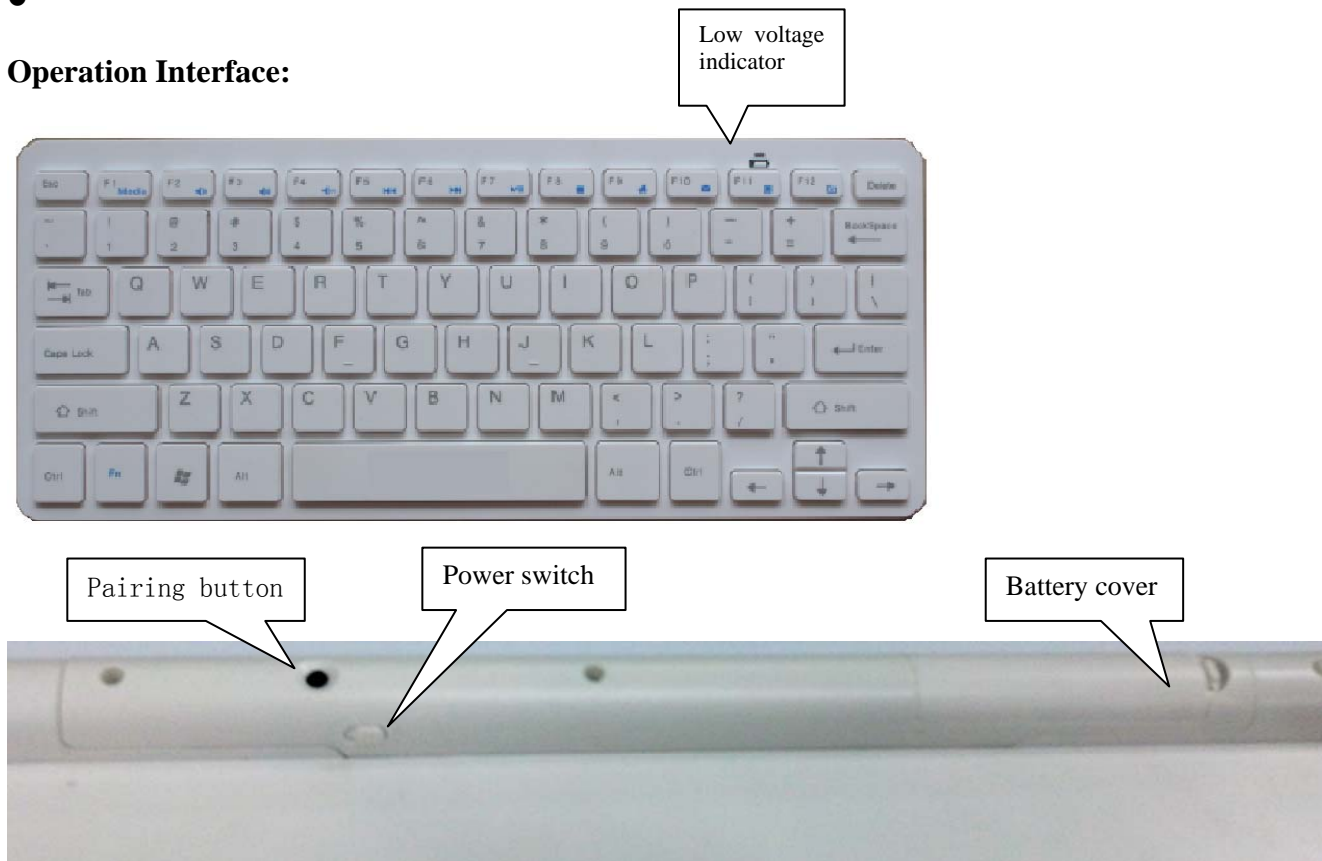
System request

- The keyboard is compatible with standard Microsoft and Apple operating system mode
- Compatible with Windows operating system and support USB device IBM compatible computer
- If your computer is not Bluetooth-enabled, please purchase a Bluetooth adapter, Bluetooth adapter is not in this product.

Main feature

- Use AIROHA AB1107 main chip, using Bluetooth 3.0 agreement
- Scissor structure design, ergonomically.
- Built-in proprietary power management software, intelligent power-saving mode, and support the power completely off.
- Use industry-leading Bluetooth keyboard solutions. Compatible with built-in or external Bluetooth receiver.
- Built-in software solution with Bluetooth human interface device
- Support Win98/Me/2000/XP/Vista/Win7/Win8 systems
- Use two AAA 1.5V Alkaline batteries
- Frequency range: 2.402~2.480GHz
- Transmission distance: 10m
- Working environment: 0~45°C
- Humidity: 10%-85%HR
-

Operation Interface:



Installation instruction

Step one:

Battery installation

1. As picture shown, open the battery cover.
2. Put into two AAA alkaline batteries (Note that the battery positive and negative)
3. Close the battery cover. The power switch to the ON position.

Step two:


Connect the keyboard and the adapter (dongle)

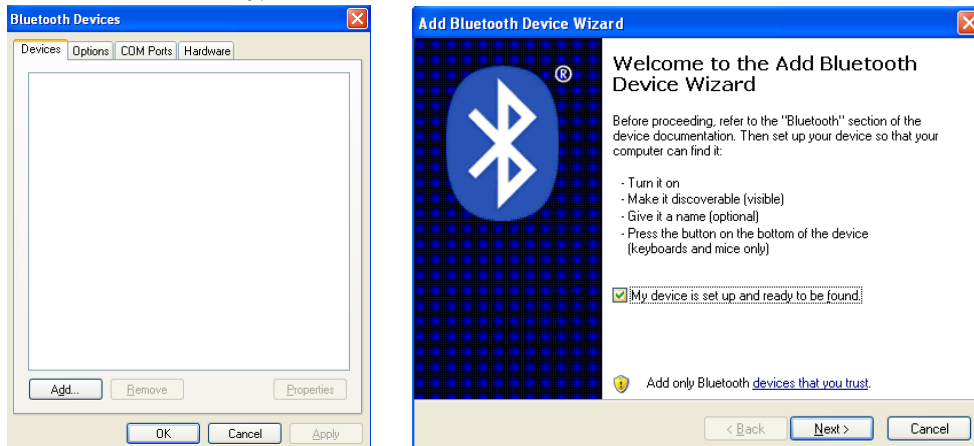
Confirm the Bluetooth adapter installation process has been completed before installing the keyboard. Such as, **Widcomm (recommended)**, **IVT**, and **Windows comes with Bluetooth driver**.

Pairing procedure

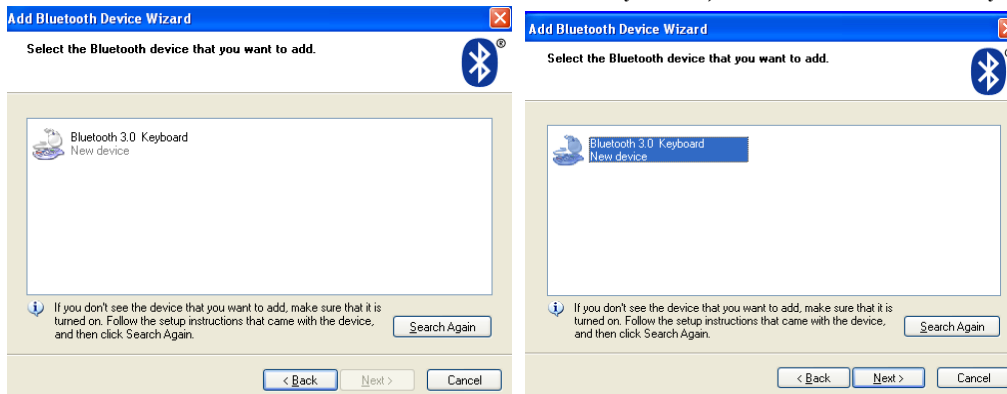
Press and release the "CONNECT" pairing button, the red light on top right flashes, at this point for matching state.

A. Bluetooth keyboard pairing procedure in Windows XP

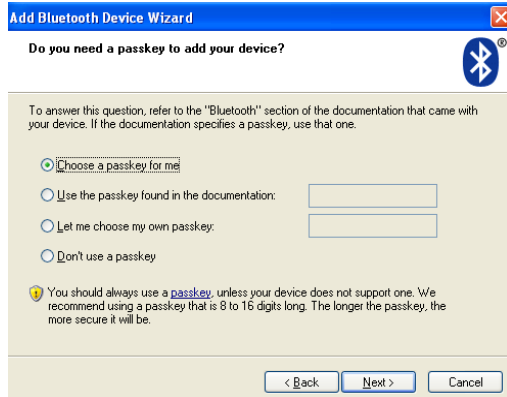
1. Ensure that the computer's Bluetooth function is activated, then double-click  at bottom right corner or Bluetooth icon in Control Panel, open the Bluetooth Manager interface, click "Add", select the device is ready, then click Next.



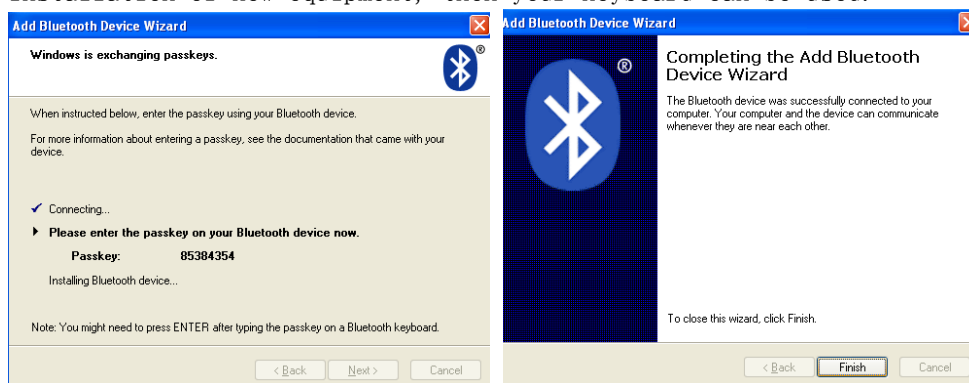
2. Wait for Bluetooth devices to find the keyboard, then select the keyboard and click Next.



3. Select Choose a password for me, click Next.



4. Using Bluetooth keyboard input a randomly generated password(No warning when you enter the password, so please be sure to enter the correct), press Enter, click Next, the system automatically completes the installation of new equipment, then your keyboard can be used.



B. The keyboard pairing procedure of using Widcomm Bluetooth Dongle driver software (please refer to Dongle instruction)

1. Double-click the desktop icon “ My Bluetooth Place” to open the program, select Bluetooth- add Bluetooth device, click Next in the Setup wizard.
2. Until the program finds the keyboard, the keyboard is selected, click Next.
3. Using Bluetooth keyboard to enter the randomly generated pairing code, and press Enter.
4. Your keyboard can be used at that time.

C. The keyboard pairing procedure of using IVT Blue driver software (Please refer to Dongle instruction)

1. Ensure the computer’s Bluetooth function is activated, double-click Bluetooth icon on desktop, open IVT management interface, select “Search for Bluetooth device” in “ My Bluetooth part” or click the ball on desktop to search keyboard.
2. Click the keyboard device has been searched, right click and select “ Refresh service”
3. Then select the Bluetooth keyboard, right select “Connect” in the “Bluetooth Human Input Device Service”, use Bluetooth keyboard to enter the randomly generated pairing code and press Enter for confirm(No warning when you enter the password, so please be sure to enter the correct) , the system will automatically complete install for new Bluetooth HID deice, then the keyboard can be used.

D. Using other free driver Dongle, the pairing procedure is the same as “ Step A”.

Troubleshooting

If the Bluetooth keyboard unable to connect with computer or other has Bluetooth function device and can not be used normally, please try the following steps:

- 1.. Before connecting keyboard, please ensure Bluetooth adapter has completed installation or other device with Bluetooth function has started normally.
2. **Re-code, reference pairing steps.**
 3. Ensure computer or other device has been paired with Bluetooth keyboard, if it can be use normally in previous, and the keyboard in standby mode, simply click any key.
4. Ensure the keyboard working normally, operating range is about 10 meters, it's depend on the environment may have changed. ;
5. Ensure that haven't connect with other computer or Bluetooth device, if changed, should be re-paired connection.
6. If the keyboard can not connect due to too many Bluetooth device has connected, you can delete some Bluetooth device you don't need.
7. Check the battery, if the red light blinks, it indicates low battery, please replace it.

FCC STATEMENT

1. This device complies with Part 15 of the FCC Rules.
Operation is subject to the following two conditions:
 - (1) This device may not cause harmful interference, and
 - (2) This device must accept any interference received, including interference that may cause undesired operation.
2. Changes or modifications not expressly approved by the party responsible for compliance could void the user's authority to operate the equipment.

NOTE: This equipment has been tested and found to comply with the limits for a Class B digital device, pursuant to Part 15 or the FCC Rules. These limits are designed to provide reasonable protection against harmful interference in a residential installation. This equipment generates, uses and can radiate radio frequency energy and, if not installed and used in accordance with the instructions, may cause harmful interference to radio communications, However, there is no guarantee that interference will not occur in a particular installation. If the equipment does cause harmful interference to radio or television reception, which can be determined by turning the equipment off and on, the user is encouraged to try to correct the interference by one or more of the following measures:

- Reorient or relocate the receiving antenna.
- Increase the separation between the equipment and receiver.
- Connect the equipment into an outlet on a circuit different from that to which the receiver is connected.
- Consult the dealer or an experienced radio/ TV technician for help.

FCC Radiation Exposure Statement:

The device has been evaluated to meet general RF exposure requirement.

The device can be used in portable exposure condition without RF striction.