

Wireless Bluetooth Mouse User's Guide

(BROADCOM Plan)

Thanks for using this products, the is the latest development Bluetooth Optical Mouse. This creative and easy-to-use Bluetooth Mouse will bring you a whole new wireless life experience.

System Requirement

- Mouse compatible with standard Microsoft Mode.
- IBM compatible PCs running Windows Operating System which supports USB devices.

Main Features

- Use BROADCOM 2042 Chipset with wireless Bluetooth 2.0 interface
- Use AvaGo A5030 optical IC, with 1000DPI optical resolution as minimum Features comfortable, ergonomic design
- Unique super energy saving mode, battery life longer than similar products by 50% to a maximum period of 6 months
- Come with particular power managing software, indicates the power capacity in Microsoft Windows System automatically
- Support battery turn off, it will be protect the battery.
- Use the Bluetooth industry leading software solutions, WIDCOMM BTW (Microsoft officially designated software) Bluetooth software
- Built-in software solutions with Bluetooth human interface device and comply with the standard version of the Bluetooth SIG Bluetooth 2.0
- Work with Windows 98, ME, 2000, Server 2003, XP and Vista
- AAA alkaline battery x2
- Frequency band: 2.4 - 2.4835GHz unlicensed ISM band
- Receiving sensitivity: -75dBm (standard)
RF output power: up to 4dBm as maximum, good for your health with lowest radiates
- Operation distance: 10m
- Workable environment: 0-45°C
- Putting environment:-10-85°C
- Humidity: 20%-50%

Precaution

! The optical mouse cannot work on a glass or mirror surface. Avoid operating this mouse on a glossy surface. Otherwise, this mouse may not operate normally.

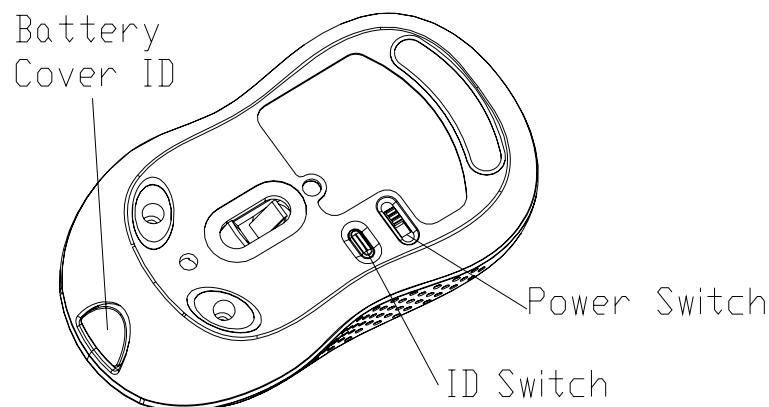
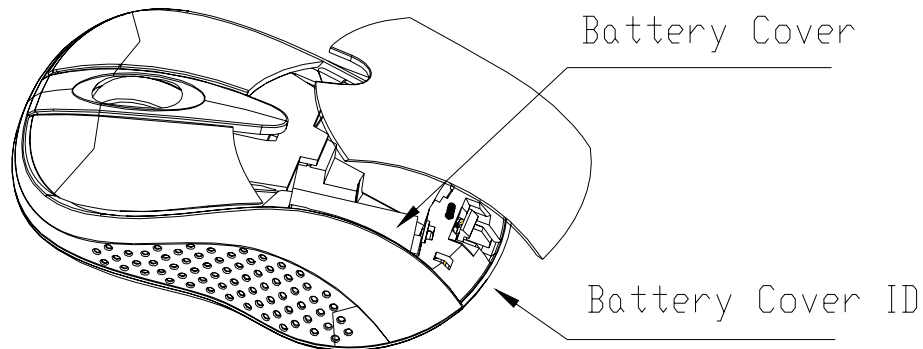
! For consideration of saving battery power, it is strongly recommended to operate an optical mouse on a bright surface with fine texture to obtain lower power consumption of the Agilest high illumination LED. A very dark surface will cause higher power consumption.

! For a better transmission distance, avoid to use this device on a metal plate or desktop because a large surface of iron, aluminum. Operating on a metal may cause the transmission distance shorter.

Installation Guide

Step1. Inserting Batteries

1. Remove the battery cover by holding the mouse with the scrolling wheel towards you, and using your thumb to push out the batter cover along the direction indicated by the bold arrow.
2. Inset two AAA alkaline batteries. (Please refer to the diagram above for the polarity of batteries).
3. Carefully slide the battery cover back in the direction opposite to that stated in procedure .
4. Please see the bottom of this mouse, the Switch must be put on the “ON” position. and the light of the mouse bottom will be light
5. Finish the battery setup.



Step2. Connecting the Mouse to the Dongle, and drive:

If you setup the Bluetooth (Dongle) drive or connecting Dongle, please turn out this step.

Before you install the Bluetooth Mouse, please make sure that the Bluetooth Dongle has been installed.


Software available like Wincomm, IVT or the Microsoft built-in software (can not connect to the headset).

Any plan connecting (Dongle) will be okay, e. g. BROADCOM, CSR, It will be finished setup when connect the USB port.

Connecting the mouse to the (Dongle) drive, please refer to (Dongle) user manual

Match Procedure

A: Match on Widcomm (recommended)

1. Double click the Icon again , “My Bluetooth Place” pops up; click “Bluetooth Setup---Bluetooth Setup Guide”. In the Setup Guild window, click next button.



2. Wait until the system found the mouse, select “Mouse”, Click “Next”.
3. Hint for connection, click “Click here”, now you can use your mouse at ease.



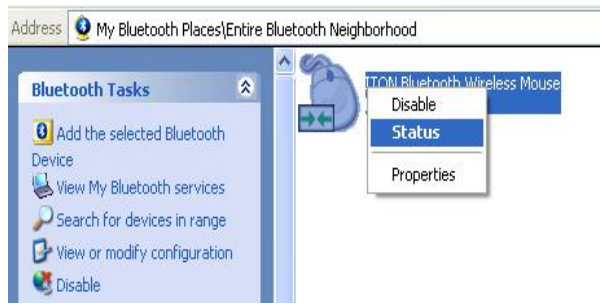
Note:

If being unused after 10 minutes, the mouse will transfer to the battery save mode. Just double click the left button will reactivate the mouse. Once connected, after you drag off the dongle or turn off the computer, double click the left button will reactivate the mouse, no need for reconnecting.

Also, if you press the Connect Button inadvertently or some abnormal disconnection occurs during using, please reconnect the mouse. If this is not available, please open the Bluetooth Dongle Software window, delete or disconnect the mouse(as the picture shows), then reconnect.

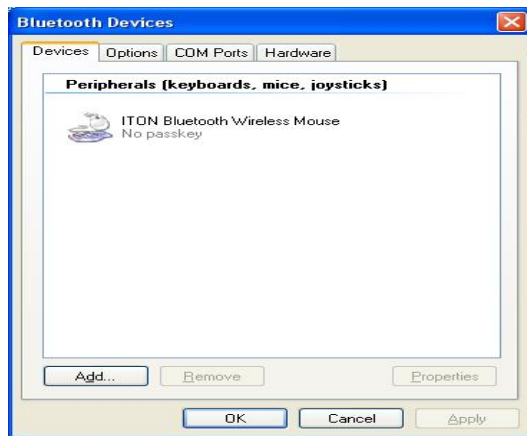


If you are using the Widcomm Bluetooth Software, click the right button of the mouse and select “Status”, then you can check the power status of the batteries and setup alarm for shortage of battery.



B. Match on Microsoft built-in software

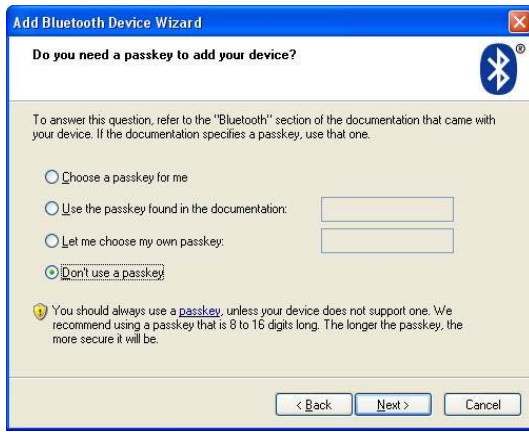
1. Make sure that the Bluetooth Function has been activated. Double click the Bluetooth Icon on the Task Bar or in the Control Panel, open the “Bluetooth Management” window, click “Add”, tick off “facility is ready for searching”, click “Next”.



2. Wait till the Mouse is found, select mouse, click “Next”.

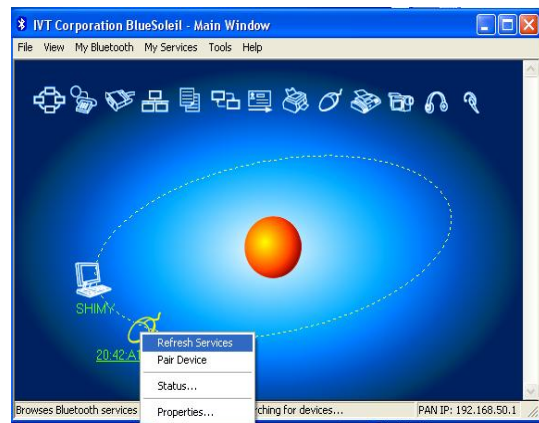
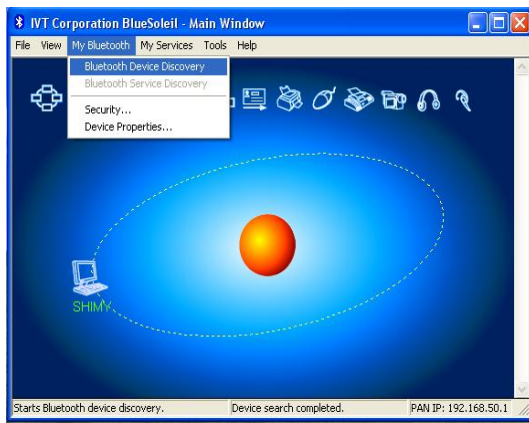


3 Select” No Password”, click “Next”, the system will install the new facility automatically.



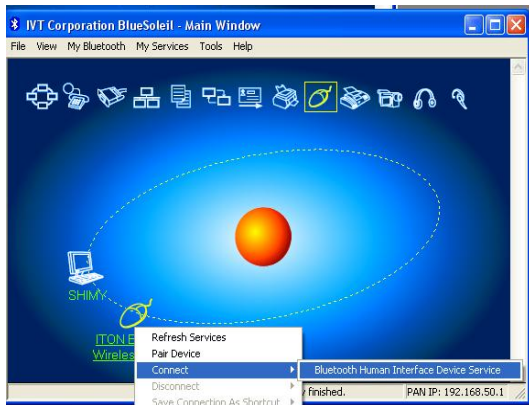
C. Match on IVT Software

1. Make sure that the Bluetooth function is active. Double click the Bluetooth Icon, open the Management window, select “Search for Bluetooth facilities” or click the Round Ball in the middle of the window.



2. Click the Bluetooth Mouse founded, click the right button for “Refresh Service”.

3. Select the Bluetooth Mouse again, click the right button for “Connect-Bluetooth Input Service”, the system will auto install the HID facility. After that you can use your Bluetooth Mouse at ease.



FAQ:

If unable to connect the Bluetooth Mouse to the computer, or the Mouse work unconventionally, please try the steps below:

1. Before you install your Bluetooth Mouse, please make sure you have done the Bluetooth Dongle installation procedure, and the Bluetooth facility is turned on.
2. Press and release the “connect” button on the bottom of Bluetooth Mouse. The red light led on the bottom will be on(changes among High-light, Low-light and Off, ready for the match).
3. Make sure that the Computer is connected to the Bluetooth Mouse. If they are matched to each other before, then under the Standby State, just double click the left button of the mouse. If the Match Button is turned on, please rematch the mouse to computer. If unable to rematch, kindly delete the Mouse Icon to erase the stored info of the mouse in the computer.
4. Make sure that the mouse is within the effective range---10M.
5. Make sure that there’s no change of the Bluetooth facility. If anything changed, please kindly rematch.
6. If your Bluetooth facility is connected to other Bluetooth products, please kindly confirm that the speed of the Bluetooth facility is enough.
7. Please kindly check the batteries. If they are short of power, replace them for new ones.

Main Performance

Mouse size : 94mm×56mm×36mm

Weight: 56±5g

Materials of Mouse: upper ABS

Scrolling wheel: PC+ silicon

Operation Voltage: 3V DC

Operation Current: <30mA, operate on a white paper.

Sleep Current: 10uA

Transmit Range: up to 10 meters

Work Temperature: -0~+45 degree

Storage Temperature: -10~+85 degree

Humidity: 20%-50%

Federal Communication Commission Interference Statement

1. This device complies with Part 15 of the FCC Rules. Operation is subject to the following two conditions:
 - (1) This device may not cause harmful interference, and
 - (2) This device must accept any interference received, including interference that may cause undesired operation.
2. Changes or modifications not expressly approved by the party responsible for compliance could void the user’s authority to operate the equipment.