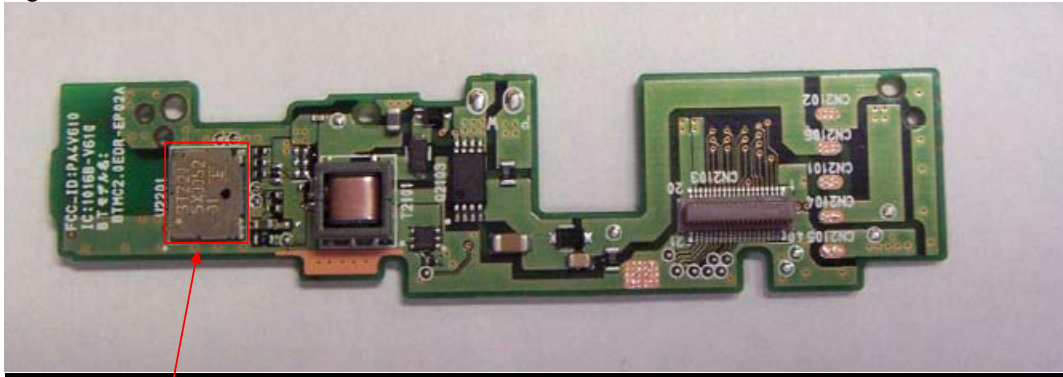


Installation Manual

This module is to be installed only by the professionals and used only with any product produced by Kodak. When this module is installed in a product, we shall consider the following points;

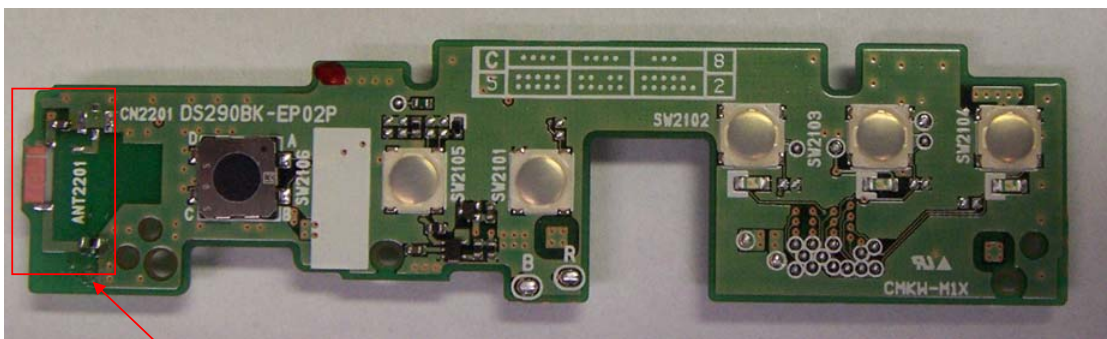
1. Since “BTMC2.0EDR-EP02A” owns its FCC ID Number/IC Number, we shall affix an exterior label on the outside of the product if the FCC ID/IC Number is not visible. The exterior label shall use wording such as either ”Contains Transmitter Module FCC ID: PA4V610 /IC Number: 1016B-V610” or “Contains FCC ID: PA4V610/IC: 1016B-V610”.
2. “BTMC2.0EDR-EP02A” complies with requirements of sub-sections 15.19(a)(3) in FCC Rules Part 15 Subpart C. The manual statement (15.19 (a)(3) is included User Guide of the product.
3. “BTMC2.0EDR-EP02A” is to be installed only by the professional line operator as shown in following pictures. (Fig1, 2, and 3)

Fig1. Rear side of “BTMC2.0EDR-EP02A”



BT Module

Fig2. Front side of “BTMC2.0EDR-EP02A”



Antenna

Fig3. “BTMC2.0EDR-EP02A” be equipped for a digital camera (example)



The following statements should be included in User guide of installed product:

FCC WARNING

Changes or modifications not expressly approved by the party responsible for compliance could void the user's authority to operate the equipment.

This equipment complies with FCC radiation exposure limits set forth for uncontrolled equipment and meets the FCC radio frequency (RF) Exposure Guidelines in Supplement C to OET65. This equipment has very low levels of RF energy that it is deemed to comply without testing of specific absorption ratio (SAR).

This transmitter must not be co-located or operated in conjunction with any other antenna or transmitter.

This device complies with Part 15 of FCC Rules and RSS-Gen of IC Rules. Operation is subject to the following two conditions: (1) this device may not cause harmful interference, and (2) this device must accept any interference received, including interference that may cause undesired operation.