



F Series IP Camera User Manual

VER. : MFEE1103A

1 Welcome.....	3
1.1 Features	3
1.2 Packing List.....	4
1.3 Product views.....	5
1.3.1 Front view	5
1.3.2 Rear panel	5
1.4 PC System Requiements	6
1.5 Hardware Instruction.....	6
1.6 Software installation	6
2 Software operation	9
2.1 IP Camera Finder	9
2.2 Camera Login in IE (LAN).....	14
2.3 Camera Icon Functions	17
2.4Setting Details	18
2.4.1 Multi-Device Settings	19
2.4.2 Network Settings	20
2.4.3Wireless LAN Settings	21
2.4.4DDNS Service Settings.....	22
2.4.5 Mail and FTP Service.....	22
2.4.6Alarm Service Settings:.....	23
3 Mobile View.....	25
3.1 Smart phone Access	26
3.2 Java Phone Access	28
3.3 3G mobile phone platform access	30
3.4 iPhone app for EasyN IP Camera.....	33
3.4.1 Features	33
3.4.2 Operations and functions demonstration.....	33
4 How to view the camera in outside network.....	35
4.1 Using a router to access the Internet	35
5.2 Static IP user.....	37
5.3 How to use other DDNS	38
5. Intelligent Video Alarm System	39
5.1Registration and Login.....	40
5.2Add equipments	41
5.3 Download and run Active X.....	42
5.4 Monitor video viewing.....	44
5.5Snapshot at appointed time	46
5.6 Alarm setting	47
5.6.1 Alarm time slot setting	48
5.6.2snapshot at appointed time	48
6 FAQ.....	49
7 Warranty Card	52

1 Welcome

IP Camera is a new generation product combined with analog camera & IP video technology. Despite all functions which analog cameras have, IP camera can compress and encrypt video and audio signal then through internet send them to remote terminals with its built-in processor and web server. Via its IP address, users can use standard PC IE browser to visit IP camera, real time monitor targets, manage and store video or image. PT control also is available through network.

Being a new member of camera family, IP camera shares the same operation functions with the analog camera, such as, auto white balance, auto shutter speed, AGC, auto backlight compensation etc. On the other hand, IP camera supports remote access through internet and multi-user visit. Some IP cameras are able to extend to both analog and digital signal.

F series IP camera's core is 32Bit RSIC. It adopts standard M-JPEG compression format. The camera sensor is CMOS which supports auto white balance and backlight balance, support IE, cell phone browser, centralized monitor interface management. In general, as its function of audio simplex & duplex, infrared, wired, wireless, local storage, it has hundreds of products, to meet requirements of various kinds of users.

1.1 Features

- Powerful high-speed video protocol processor
- MJPEG video compression
- Wireless(Wifi 802.11B/G,WEP,WPA,WPA2)optional
- Remote Pan Tilt (P: 270° T:90° Speed adjustable)
- IR night vision 10m
- Support two-way audio function
- High-sensitivity CMOS sensor
- Resolution:640 x 480(VGA), 320 x 240(QVGA)
- Video Frame Rate:25fps(QVGA), 15fps(VGA)
- Minimum Illumination: 0.1 Lux/F1.2
- Supports control P/T through IP network
- Support Pan Tilt cruise
- Supporting up to 4 users online simultaneously
- Supporting image snapshot and video record
- Support image flip ,mirror
- Brightness and Contrast adjustable
- Built-in 10M/100M auto MDI/MDIX Ethernet interface
- Light Frequency:50Hz, 60Hz or Outdoor

Multi-level users management and passwords definition

Built-in Web server, supports remotely viewing and/or management the camera form a standard Web browser on any computer which can through internet.

Supporting Dynamic IP (DDNS) ,Built-in Free DDNS

Giving alarm in cause of motion detection, sending photo to email or FTP, record videos on pc when alarms.

Supporting multiple network protocols: TCP/IP、HTTP、ICMP、DHCP、FTP、SMTP、PPPoE etc.

Support mobile surveillance like Smart phone,3G phone,IPhone,PDA,etc.

Free 16ch or 64ch software clients support.

Ten languages (English, Simplified Chinese, Traditional Chinese, Spanish, French etc.) support

Support Firefox browser

Reset button available if lost password

1.2 Packing List

Untie the pack and check the items contained against the following list;

- Wireless IP Camera 1
- Wi-Fi Antenna 1
- DC Power Supply 1
- CD 1 (User Manual、 software)
- Qualified Certificate 1
- Mounting Bracket 1
- Screws 2

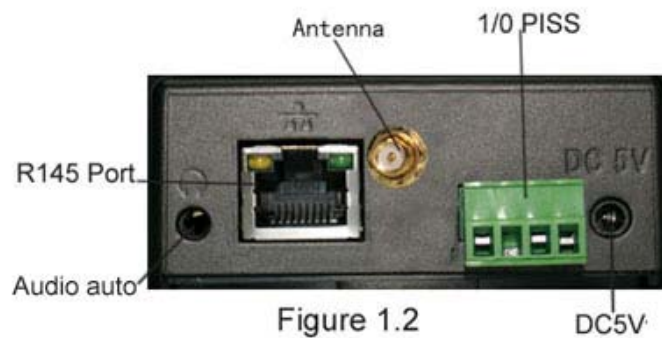
NOTE:Contact us immediately in the case of any damaged or short of contents.

1.3 Product views

1.3.1 Front view



1.3.2 Rear panel



LAN: RJ-45/10-100 Base T
DC5V: 5V/2A Power supply



Figure 1.3

RESET BUTTON: press and hold down the RESET BUTTON(Figure 1.3 underpan) for 7-10 Seconds .Release the power button and IP Camera will be reset back to the factory default Parameter.

1.4 PC System Requirements

Minimum Hardware Configuration

CPU: Pentium 1.6 GHz

Memory: 256MB

Audio card: need audio monitor, two way talkback essential

Hard Disk : if need to record video image, no less than 40G

Operation System: 32 bit simple/ English Windows2000、 Windows XP、 Windows2003、 Windows Vista & 64 bit simple Chinese/English Windows2003、 Windows XP、 Windows Vista etc.

Software environment

IE 5.0 or above version

DirectX8.0 or above version

TCP / IP network protocol

1.5 Hardware Instruction

Follow the steps below to set up your camera hardware. Make sure to follow each step carefully to ensure that the camera operates properly

- 1) Plug the network cable into the camera and then into your Cable/DSL router.
- 2) Plug the power adapter into the camera and then into the power outlet.

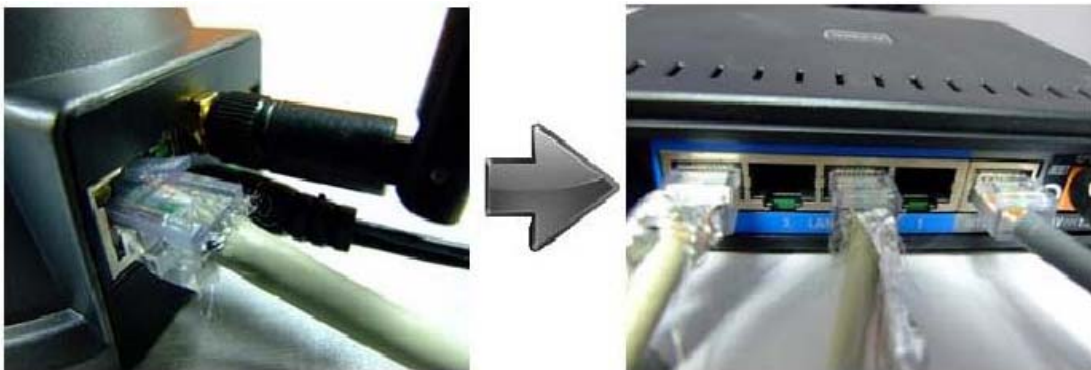


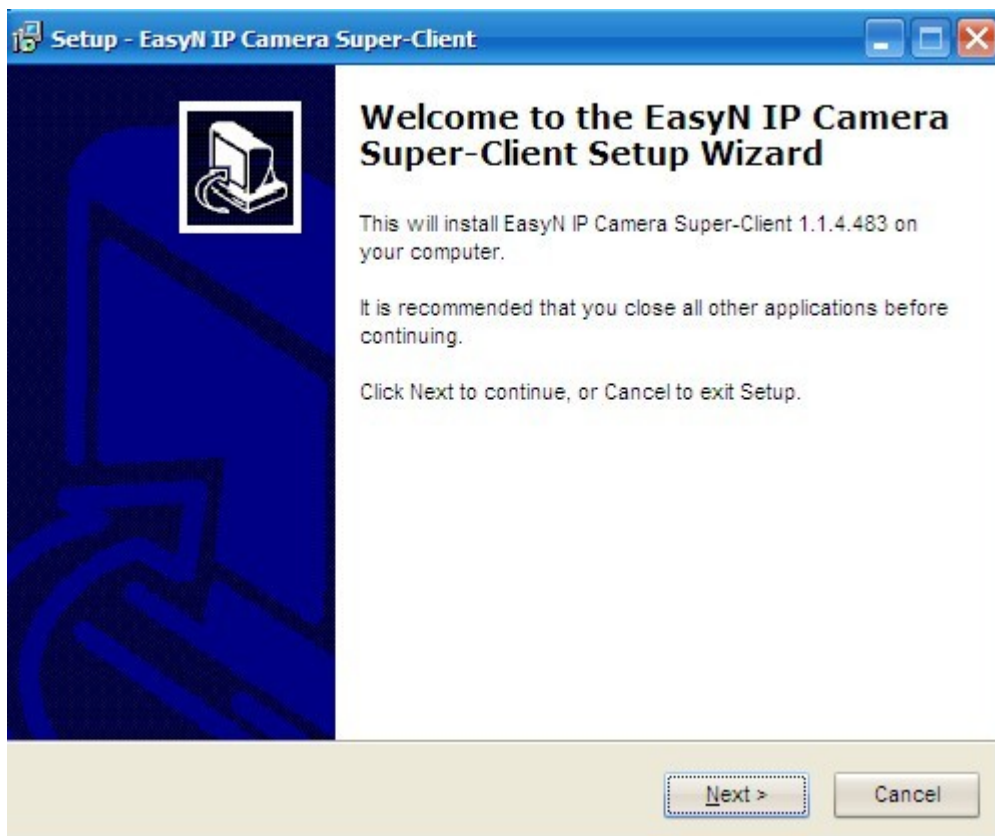
Figure 1.3

1.6 Software installation

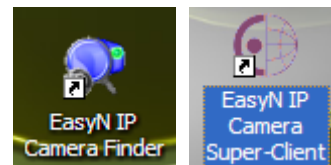
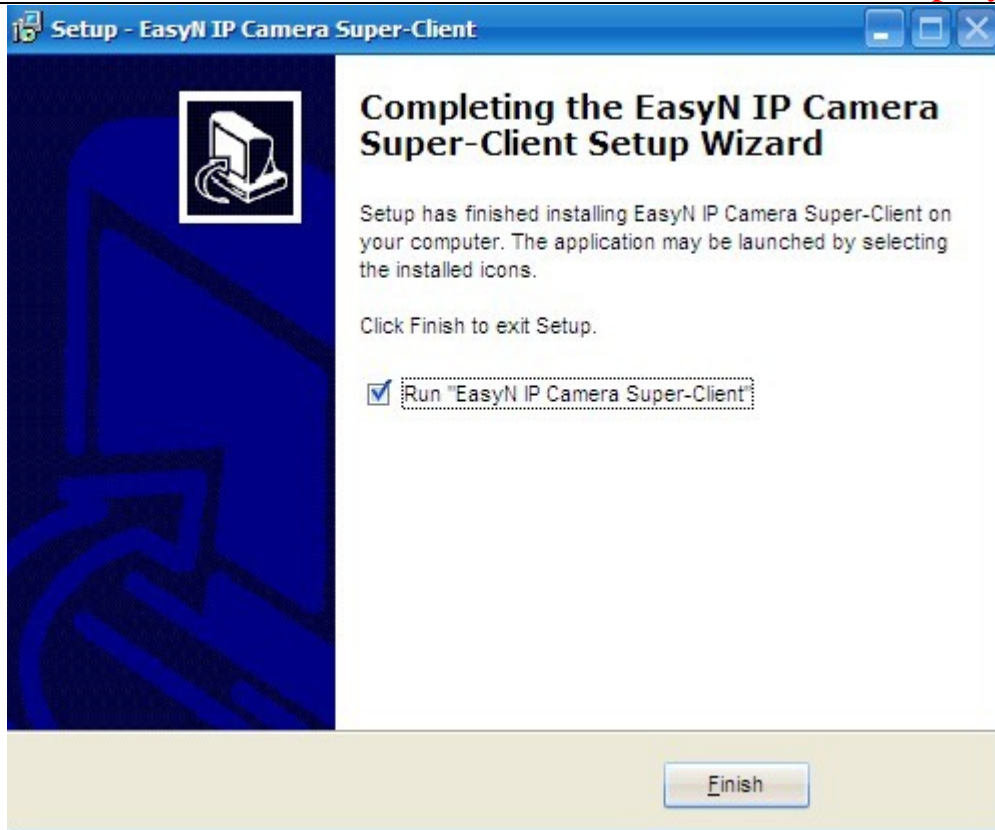
Software installation is the key to the successful use of this product.

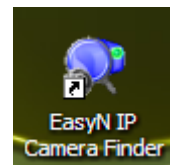
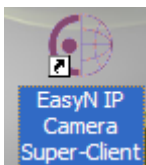
- 1 Open the CD, find the software as instruction;
- 2 Double click **Integrated Surveillance Center** and install the software as

instruction.



- 3 Only click **Next**,you will complete the software installation.



From the computer desktop you can find an icon   appears on the Desktop automatically.

NOTE:Before installing and using the product, please read the following precautions carefully and make sure they are fully understood.

Use only the power adapter attached with the product .Use of unauthorized power adapter may cause damages to your IP Camera.

Do not touch the lens of the IP Camera at will .The optimum focus range has been set before the IP Camera is delivered out of the factory. If you turn the lens,it may cause incorrect focus and vague images.

Do not turn the Pan/Tilt by force for it may cause damage to internal components of the Pan/Tilt.

IP Camera terminal shall be installed in an indoor environment.

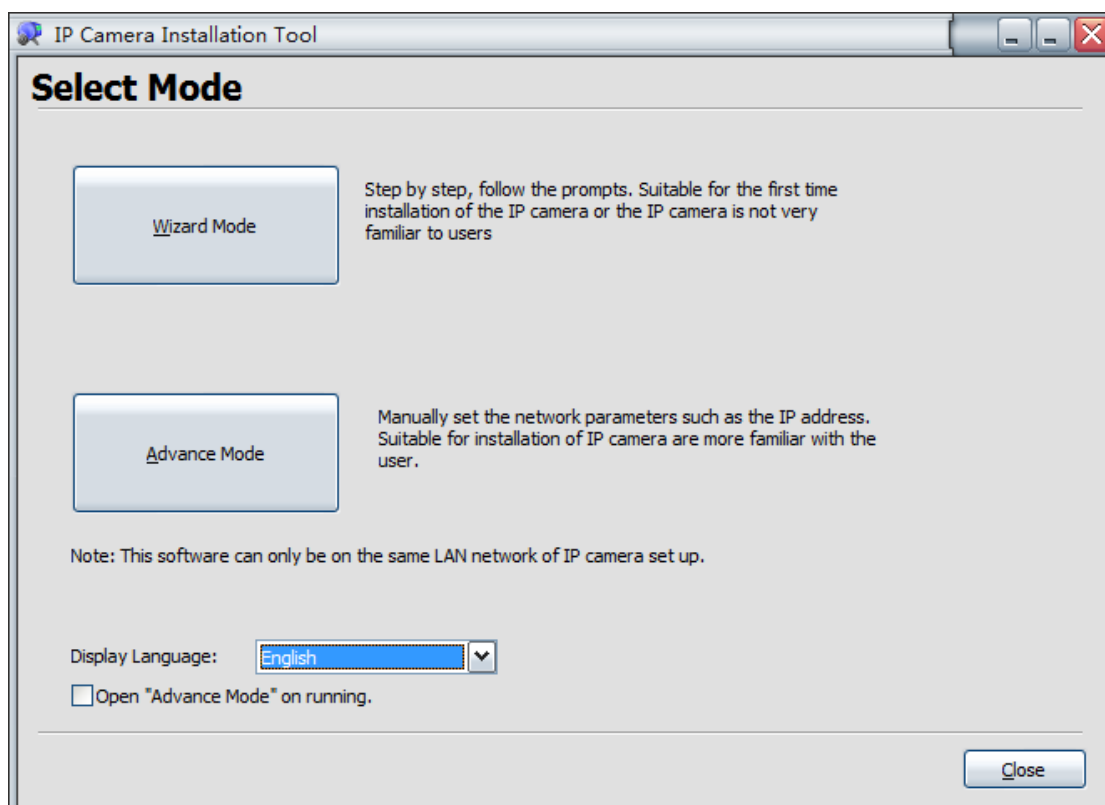
2 Software operation

2.1 IP Camera Finder

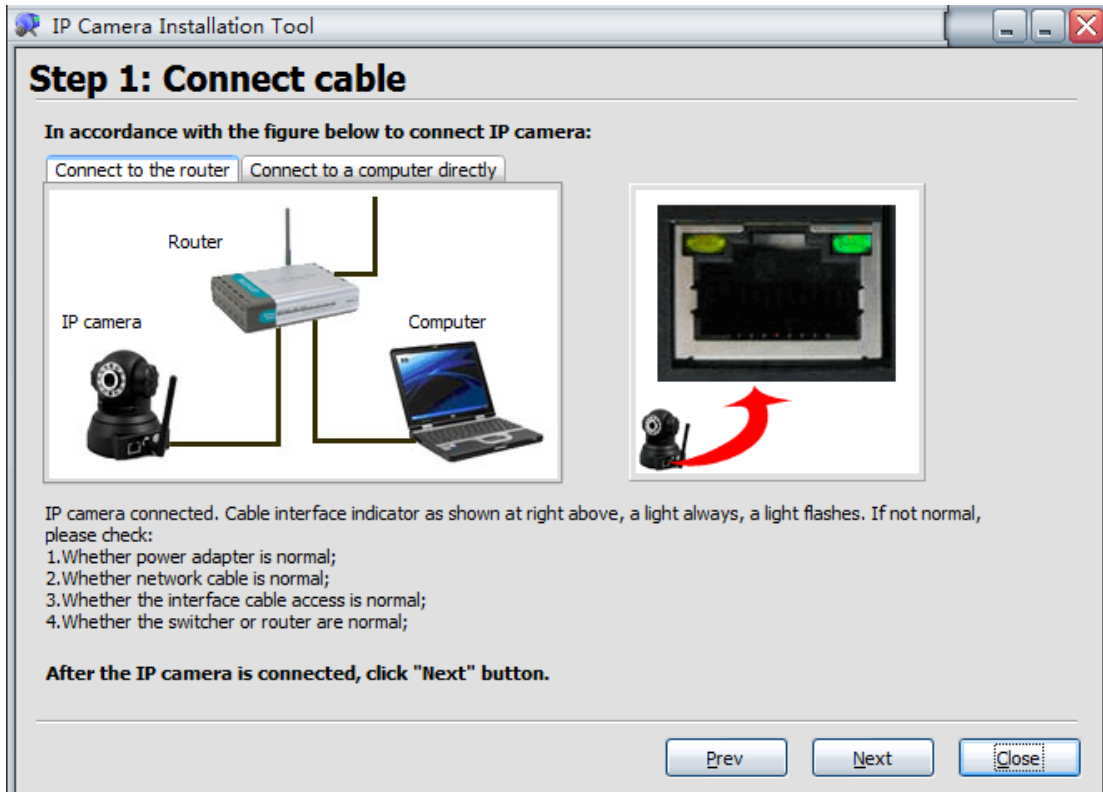
When the Device has been mounted properly, you can double click the Icon “EasyN IP Camera



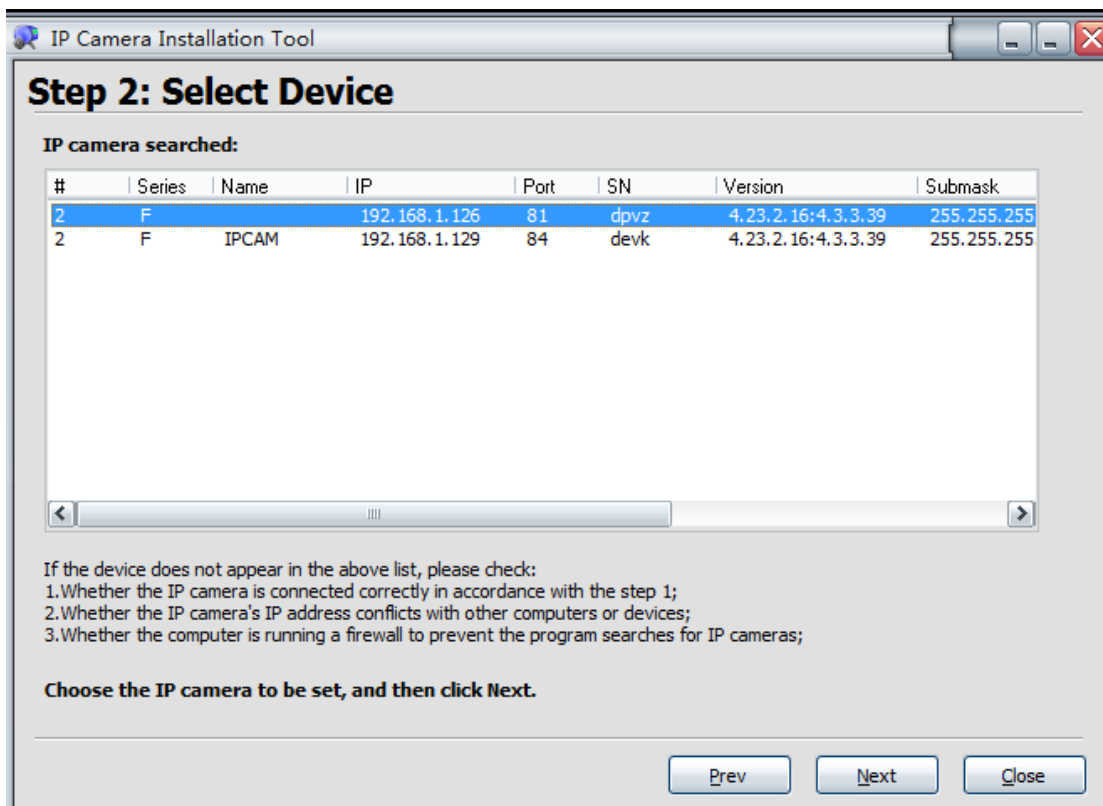
Finder” and a dialog box will pop up.



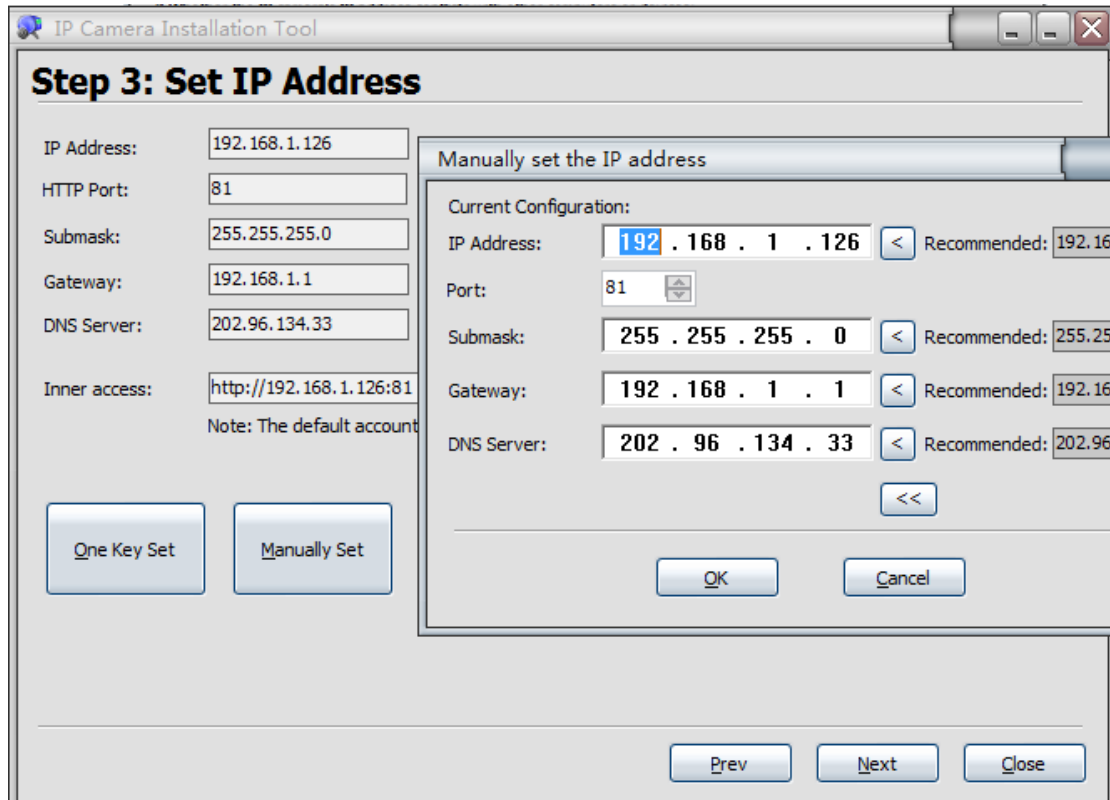
Wizard Mode(if you not familiar the settings pls chose this mode):



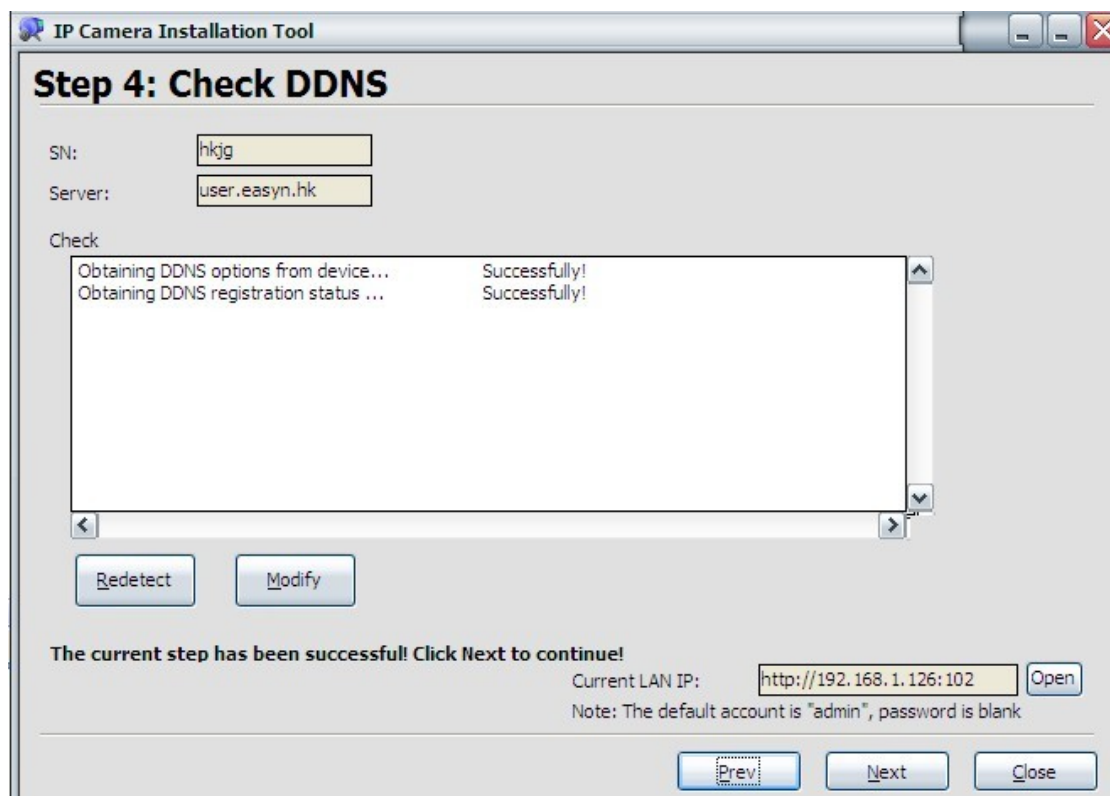
Select 'Connect to the router' or 'Connect to a computer directly' according to your requirements, then click 'Next'.



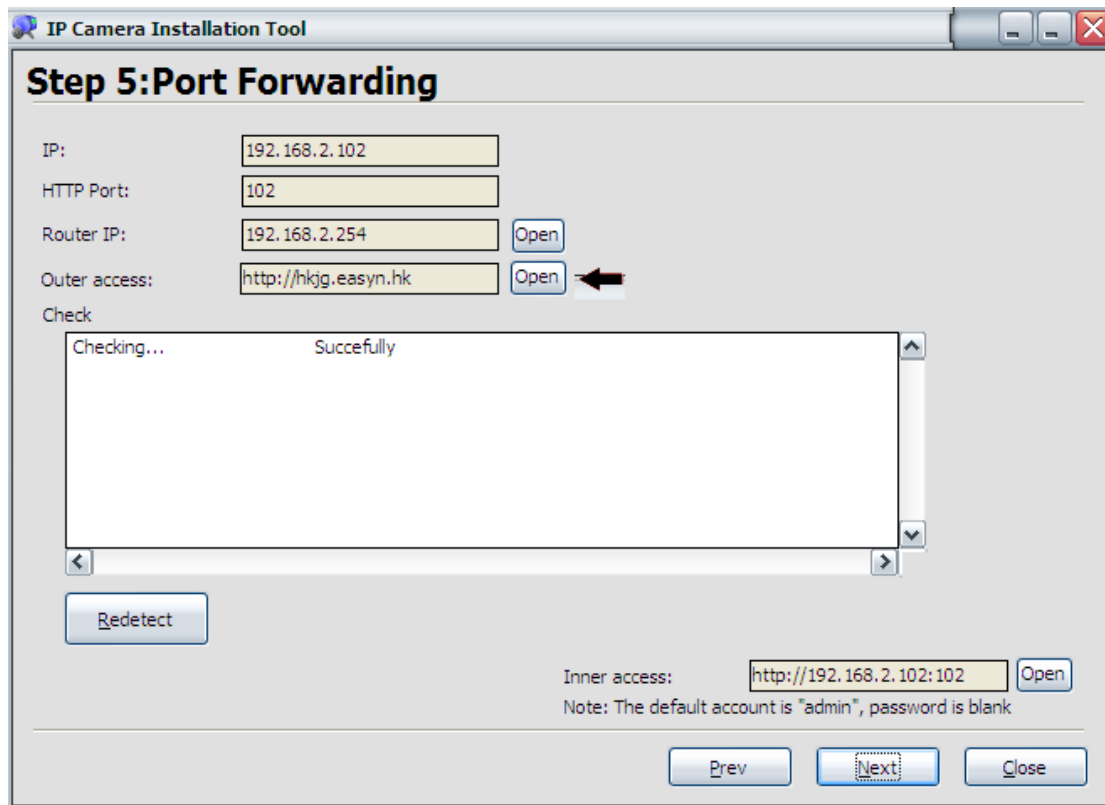
Select the right device then Click 'Next'



You can use One key Set or Manually set, here we recommend 'One Key Set' if you are not familiar with the setting, click 'next' after Set IP Address (Note: You have to wait for 40 seconds to restart the device after setting Ip address)

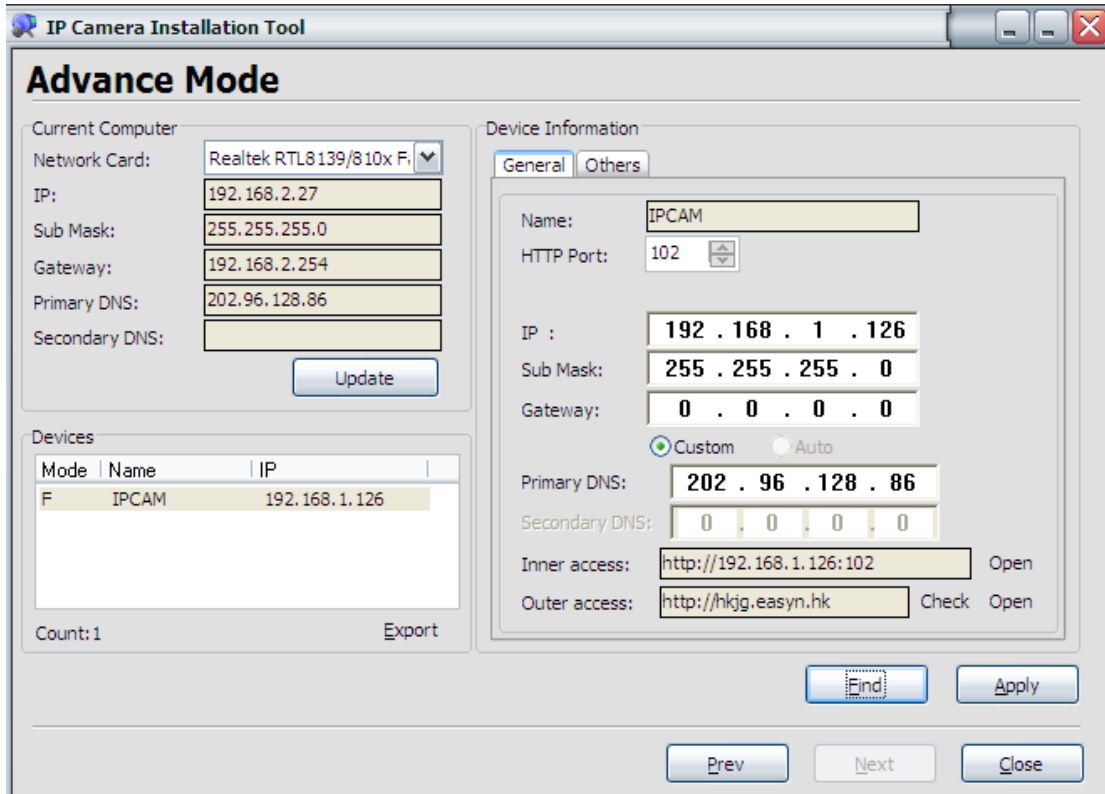


Click 'Next'



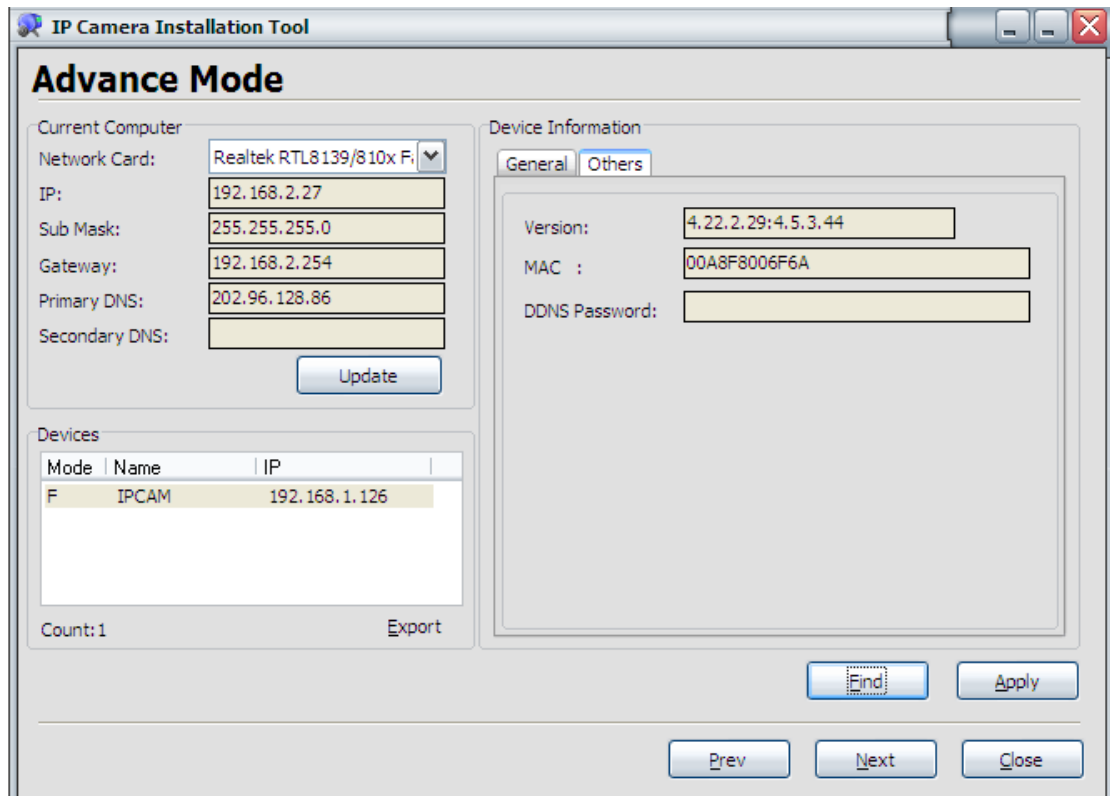
Here you have finished the setting,click'open' to login the ip camera.

Advanced Mode (if you are already familiar with the settings pls chose this mode):



- **Basic Properties**

There are some device informations in the Basic Properties ,such as **Device MAC, System Firmware Version, Web UI Version.**



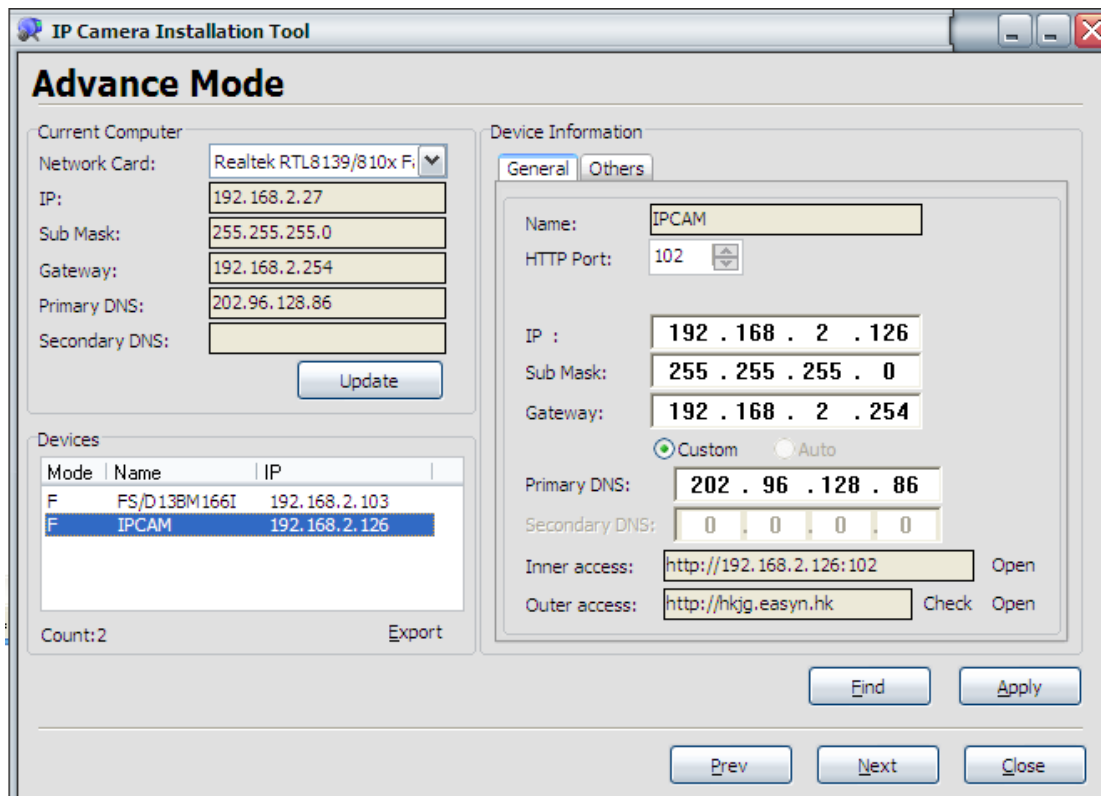
Note: The software searches IP Servers automatically over LAN.

- 1 .The ip camera and the pc should be in the same LAN
- 2 **To install more than one cameras in the LAN**,all of the cameras port and IP address can not be same.
3. **pls** make sure the camera ip address is in the same subnet as the gateway (i.e .the first three sections are the same)
- 4.**Mask:** The default subnet mask of the equipment is :255.255.255.0
- 5.**Gateway:** Make sure it is in the same subnet with PC IP address .Default Gateway address is 192.168.1.1
- 6.**DNS:** IP address of IPS network provider.
- 7.**Port:**LAN port assigned for the equipment, usually 81-10000
- 8.**User & Password :** Default administrator username/password: admin/No password

2.2 Camera Login in IE (LAN)

You can access the camera through IP Camera Tool or IE directly.

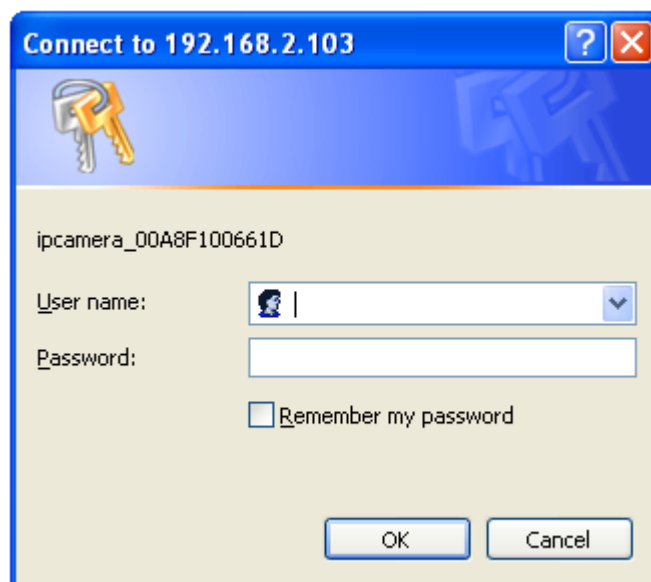
- 1) Click the inner access: "open"



2)

3) To access the camera ,start your web browser and type in the camera's IP address,Such as http://192.168.2.126:102

The Camera Login page pop-up.



Enter your account and password on the login page as shown above
Administrator's username is: **admin** and no password.

EasyN IP Camera

ActiveX Mode (For IE Browser)

Sign in

Server Push Mode (For FireFox, Google Browser)


Sign in

Mobile Phone (For Browser that supports Javascript)

Sign in

Ipod touch / iphone 2G, 3G, 3GS, 4 and Ipad dedicated

Sign in

Language: 

do not show next time

Please Sign in with ActiveX Mode(for IE)




Note: Before IE monitoring through web, it is necessary to install a ActiveX.


2.3 Camera Icon Functions




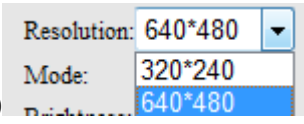
Rotate the cameras(pan/tilt)

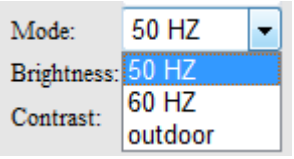
Auto Pan/Tilt  **Adjust Pan/Tilt Speed:**  5

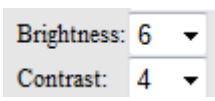
If you want to detect 4 or 9 views, need to click this icon 

Flip: To see the flip image. 

Mirror: To see the mirror image. 

Resolutions: can chose 320*240 or 640*480 

Mode: can chose 50HZ ,60HZ or outdoor 

Brightness and Contrast:can set the brightness and contrast 

Record:Click icon  to record videos

Snapshot: Click icon  to snap the picture.

AUDIO: Click icon  Camera MIC open, Local Voice input

TALK: Click icon  Camera Speaker open, Remote Voice Output



2.4 Setting Details

EasyN IP Camera Options

<ul style="list-style-type: none"> Device Info Alias Settings Date&Time Settings Users Settings Multi-Device Settings Basic Network Settings Wireless Lan Settings ADSL Settings UPnP Settings DDNS Service Settings Mail Service Settings Ftp Service Settings Alarm Service Settings PTZ Settings Log Maintenance Back 	<table border="1" style="width: 100%; border-collapse: collapse;"> <thead> <tr> <th colspan="2" style="text-align: left;">Device Status</th> </tr> </thead> <tbody> <tr> <td>Device ID</td> <td>00A8F7007105</td> </tr> <tr> <td>Device Firmware Version</td> <td>4.22.2.34</td> </tr> <tr> <td>Device Embedded Web UI Version</td> <td>4.5.3.44</td> </tr> <tr> <td>Alias</td> <td>ipcam</td> </tr> <tr> <td>Alarm Status</td> <td>None</td> </tr> <tr> <td>DDNS Status</td> <td>Succeed</td> </tr> <tr> <td>UPnP Status</td> <td>No Action</td> </tr> <tr> <td>P2P Status</td> <td>Succeed and local listen port: 22202</td> </tr> <tr> <td>Language</td> <td>English <input type="button" value="v"/></td> </tr> <tr> <td colspan="2" style="text-align: center;"> <input type="checkbox"/> do not show the first page </td> </tr> <tr> <td colspan="2" style="text-align: center;"> <input type="button" value="Refresh"/> </td> </tr> </tbody> </table>	Device Status		Device ID	00A8F7007105	Device Firmware Version	4.22.2.34	Device Embedded Web UI Version	4.5.3.44	Alias	ipcam	Alarm Status	None	DDNS Status	Succeed	UPnP Status	No Action	P2P Status	Succeed and local listen port: 22202	Language	English <input type="button" value="v"/>	<input type="checkbox"/> do not show the first page		<input type="button" value="Refresh"/>	
Device Status																									
Device ID	00A8F7007105																								
Device Firmware Version	4.22.2.34																								
Device Embedded Web UI Version	4.5.3.44																								
Alias	ipcam																								
Alarm Status	None																								
DDNS Status	Succeed																								
UPnP Status	No Action																								
P2P Status	Succeed and local listen port: 22202																								
Language	English <input type="button" value="v"/>																								
<input type="checkbox"/> do not show the first page																									
<input type="button" value="Refresh"/>																									

Alias Settings: You can Input the new name as you like.

Alias Settings	
Alias	<input style="width: 60%;" type="text" value="IP Camera"/>
<input type="button" value="Submit"/> <input type="button" value="Refresh"/>	

Data&Time Settings: Data&Time Settings page.

Date&Time Settings	
Device Clock Time	2010年6月29日 14:33:37
Device Clock Timezone	(GMT +08:00) Beijing, Singapore, Taipei <input type="button" value="v"/>
Sync with NTP Server	<input checked="" type="checkbox"/>
Ntp Server	time.nist.gov <input type="button" value="v"/>
Sync with PC Time	<input checked="" type="checkbox"/>
<input type="button" value="Submit"/> <input type="button" value="Refresh"/>	

Users Settings: Eight accounts are acceptable for this system. Here the eight users can Configure their user names and password as administrator, Operator or Visitor.

Administrator: You can setup the advanced configurations of the IP Camera.

Visitor: In this mode, you can only view.

Operator: You can control the direction of IP Camera and set some parameter.

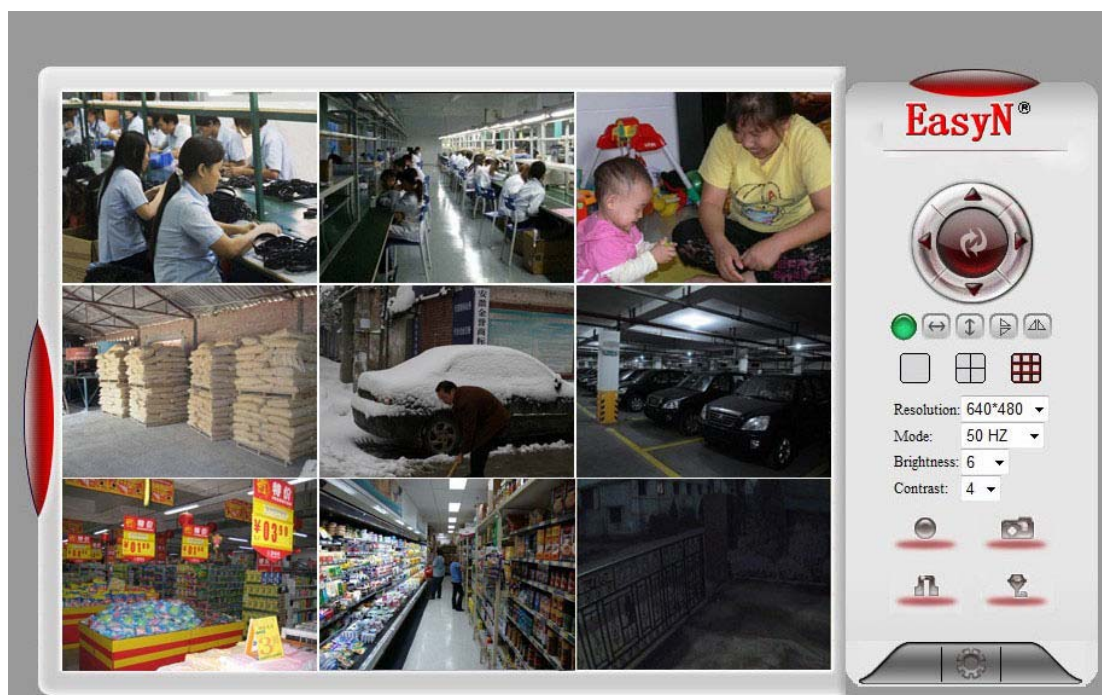
Users Settings		
User:	Password:	Group
<input type="text" value="admin"/>	<input type="password" value="●●●●●●"/>	Administrator ▾
<input type="text" value="visitor"/>	<input type="password" value="●●●●●●"/>	Visitor ▾
<input type="text" value="operator"/>	<input type="password" value="●●●●●●"/>	Operator ▾
<input type="text"/>	<input type="password"/>	Visitor ▾
<input type="text"/>	<input type="password"/>	Visitor ▾
<input type="text"/>	<input type="password"/>	Visitor ▾
<input type="text"/>	<input type="password"/>	Visitor ▾
<input type="text"/>	<input type="password"/>	Visitor ▾

2.4.1 Multi-Device Settings

Use multiple cameras in LAN

In the Multi-Device Settings page, you can see all devices searched in LAN. You can add more cameras list in LAN for monitoring

Multi-Device Settings	
Device List in Lan	<div style="border: 1px solid black; padding: 2px;"> IP Camera(192.168.1.126) IPCAM(192.168.1.129) </div> <div style="text-align: center; margin-top: 5px;"> <input type="button" value="Refresh"/> </div>
The 1st Device	This Device
The 2nd Device	None
Alias	<input type="text" value="IPCAM"/>
Host	<input type="text" value="192.168.1.129"/>
Http Port	<input type="text" value="84"/>
User:	<input type="text" value="admin"/>
Password:	<input type="password"/>
	<input type="button" value="Add"/> <input type="button" value="Remove"/>
The 3rd Device	None
The 4th Device	None
The 5th Device	None
The 6th Device	None
The 7th Device	None
The 8th Device	None
The 9th Device	None
attention: If you want to access the device from internet, be sure the host and port that you set can be accessed from internet.	
<input type="button" value="Submit"/> <input type="button" value="Refresh"/>	



2.4.2 Network Settings

About http port, In most cases, you can leave this value as however numbers

Basic Network Settings	
Obtain IP from DHCP Server	<input type="checkbox"/>
IP Addr	<input type="text" value="192.168.1.126"/>
Subnet Mask	<input type="text" value="255.255.255.0"/>
Gateway	<input type="text" value="192.168.1.1"/>
DNS Server	<input type="text" value="202.96.134.33"/>
Http Port	<input type="text" value="81"/>
<input type="button" value="Submit"/> <input type="button" value="Refresh"/>	

2.4.3 Wireless LAN Settings

Click the Scan button (at least two times),select your wifi SSID, and write in your wifi's password.

Wireless Lan Settings	
Wireless Network List	<div style="border: 1px solid gray; padding: 2px;"><p>admin[0025864bfeb0] infra WPA/WPA2-PSK ChinaNet-LqYr[002568110c8a] infra WPA/WPA2-F</p></div> <input type="button" value="Scan"/>
Using Wireless Lan	<input checked="" type="checkbox"/>
SSID	<input type="text" value="admin"/>
Network Type	Infra ▾
Encryption	WPA Personal (AES) ▾
Share Key	<input type="text" value="1234567890"/>
<input type="button" value="Submit"/> <input type="button" value="Refresh"/>	

ADSL Settings (pls don't use it ,if you use routers)

When connected to the Internet through ADSL directly ,you can enter the ADSL username and password obtained from ISP.

ADSL Settings	
Using ADSL Dialup	<input checked="" type="checkbox"/>
ADSL User	<input type="text" value="gzfengchna@163.gz"/>
ADSL Password	<input type="password" value="••••••••••"/>
<input type="button" value="Submit"/> <input type="button" value="Refresh"/>	

Upnp Settings: If you have done the port forwarding in the routers, you need not care about it.

UPnP Settings	
Using UPnP to Map Port	<input type="checkbox"/>
UPnP Status	No Action
<input type="button" value="Submit"/> <input type="button" value="Refresh"/>	

2.4.4 DDNS Service Settings

DDNS Service: The system support protocols from some DDNS providers, and our own ddns (built-in)..

User and Password: the user name and password used when applying for the domain name. (if use our Built-in ddns, and you can find the ddns user and password from the label of ip camera)

DDNS or Proxy Server: If you access the DDNS host through a proxy, you should input the Proxy IP. (if use our Built-in ddns, it's should be **user.easyn.hk**)

DDNS or Proxy Port: Proxy Port. (if use our Built-in ddns, the port should be 808 or 80)

DDNS Service Settings	
DDNS Service	IPCam
DDNS User	hexm
DDNS Password	••••••
DDNS or Proxy Server	user.easyn.hk
DDNS or Proxy Port	808
DDNS Status	Succeed
<input type="button" value="Set"/> <input type="button" value="Refresh"/>	

2.4.5 Mail and FTP Service

Configure the E-mail box to receive and send mails. The E-mail box is used for receiving the images sent after alarm and the system IP address after successful dial-up.

Mail Service Settings	
Sender	<input type="text" value="easynhk@163.com"/>
Receiver 1	<input type="text" value="easynhk@163.com"/>
Receiver 2	<input type="text"/>
Receiver 3	<input type="text"/>
Receiver 4	<input type="text"/>
SMTP Server	<input type="text" value="smtp.163.com"/>
SMTP Port	<input type="text" value="25"/>
Transport Layer Security Protocol	None <input type="button" value="v"/>
	Gmail only support TLS at 465 port and STARTTLS at 25/587 port.
Need Authentication	<input checked="" type="checkbox"/>
SMTP User	<input type="text" value="easynhk"/>
SMTP Password	<input type="password" value="••••••"/>
	<input type="button" value="Test"/> Please set at first, and then test.
Report Internet IP by Mail	<input type="checkbox"/>
	<input type="button" value="Set"/> <input type="button" value="Refresh"/>

Settings the FTP Service:

Ftp Service Settings	
FTP Server	<input type="text" value="202.96.23.258"/>
FTP Port	<input type="text" value="21"/>
FTP User	<input type="text" value="easynhk"/>
FTP Password	<input type="password" value="••••••••"/>
FTP Upload Folder	<input type="text" value="easyn"/>
FTP Mode	PORT <input type="button" value="v"/>
	<input type="button" value="Test"/> Please set at first, and then test.
Upload Image Now	<input checked="" type="checkbox"/>
Upload Interval (Seconds)	<input type="text" value="0"/>
Scheduler	<input type="checkbox"/>
	<input type="button" value="Set"/> <input type="button" value="Refresh"/>

2.4.6 Alarm Service Settings:

Enter Alarm Service Settings page to configure Motion Detection function.

Scheduler

Log

Tue, 2010-06-29 06:05:52	admin	192.168.1.100	access
Tue, 2010-06-29 06:48:07	admin	192.168.1.100	access

Maintenance:

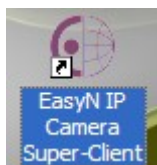
Maintenance	
Reboot Device	<input type="button" value="Reboot Device"/>
Restore Factory Settings	<input type="button" value="Restore Factory Settings"/>
Upgrade Device Firmware	<input type="button" value="浏览..."/> <input type="button" value="Upgrade"/>
Upgrade Device Embedded Web UI	<input type="button" value="浏览..."/> <input type="button" value="Upgrade"/>

Upgrade Device Firmware: Upgrade Device Firmware and device embedded web UI software in This page.

Restore Factory Settings: Restore factory settings of the device.

Reboot Device:Reboot the device.

Back: Back to Monitoring Mode.



3 Mobile View

First of all, the mobile phone must open the internet access function.

3.1 Smart phone Access

The smart phones are the mobile phones with operating system, such as Windows Mobile and Symbian. Due to its powerful function, the web page browser of such phones usually supports Javascript. That's why it can visit the dynamic pages of the IP camera through web page browser.

First of all, the mobile phone must open internet access function.

Use the browser on the phone to visit the address of the IP camera, e.g. <http://demo.easyn.cn> ("demo" is the Serial No. Each device has only one Serial No)

Next, taking the Opera mini 4 Version on Windows Mobile as an example, we are going to introduce the whole procedure. Enter access address <http://demo.easyn.cn> in the browser address bar, the following interface will appear:



2. Input the Username and Password of the device, and the following interface will appear. There are three log-in options. Click on the third "Sign in" and use Mobile Phone mode.

Language is used to select the display language.

Do not show next time: When this option is selected, this interface will not appear when you log in next time. It will directly skip to the monitor image..



Description for the monitor image:



Instruction for the Key Function:

Update: it is used to refresh the page. If the monitor picture is kept still, you may press this key to update the page.

Up, down, left, and right: They are used to rotate the camera P/T. The camera without P/T does not have these keys.

Stop: Stop to rotate the camera P/T

The Download address of the mobile browser Opera mini: <http://mini.opera.com>. Download the Opera mini browser according to the mobile model.

3.2 Java Phone Access

Firstly you need to open Internet function on your phone. Next install the mobile phone software. There are two ways for the installation:

1. Access to the download website <http://mob.easyn.cn> through the phone

When the phone gets access to the website, the following interface will appear



Select the language version you required, such as English Version, then the following interface will appear:



JAD and JAR documents are available to be installed. Usually JAD document is OK. If JAD document fails to be installed after downloaded, please try to download JAR document.

2. Download JAVA Program through Computer

Download the document through computer

English version: <http://mob.easyn.cn/en/MobileView.zip>

Chinese version: <http://mob.easyn.cn/cn/MobileView.zip>

Put the file into the phone when the downloaded file is decompressed. Install the program on the phone.

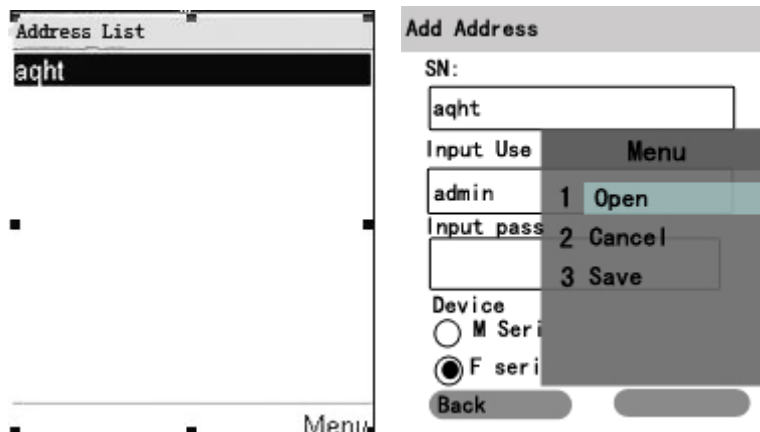
The following is the use instructions

Run MobileView on the phone, and then the following interface will appear: (different phones may have different interfaces)



Select “add” to add the equipment to be visited, the following interface will appear:

Input the device access address/Serial No: Input the camera Serial No or access address. For example, if the camera Serial No is “abcd”, input “abcd”.
Input Username: Input the access account of the device.
Input the Password: Input the access password of the device.
Device Model: Select according to the device model. Select F for this series.
After you have inputted all the information required, if you want to add them into the save list for next visit, select “Save”; if not, select “Open”to visit it directly.



Click “Open”, and the following interface will appear. You will see the live picture through it.



During the viewing process, users can control P/T upward by press cell phone keyboard. 2 is to upward, 8 downward, 4 & 6 leftward & rightward. Users can also directly use direction key to control.

3.3 3G mobile phone platform access

First open '3g.easyn.hk' via your 3G mobile phone browser.

Take Android operating system for example.



1. Select Android and screen size

EasyN Video Surveillance System

Account:

Password:

©EasyN

Account:

Password:

Confirm Password:

password-protected answer:

Email:

* Please fill in a real and effective e-mail address for the recovery of lost passwords.

2. Click Register to get an account.

EasyN Video Surveillance System

Account:

Password:

©EasyN

EasyN Video Surveillance System

no new alarm

 Single Channel

 4 Channels

 Alarm Record

 Pictures

 Management

 Account

©EasyN

3. After you finished registering, use your account to login. Click 'Management' to add an IP camera, as below:

Management

Name	Camera SN	Modify	Delete
hexm	hexm	Modify	Delete

[add](#)

[Home](#) [4 Channels](#)

Camera Name:

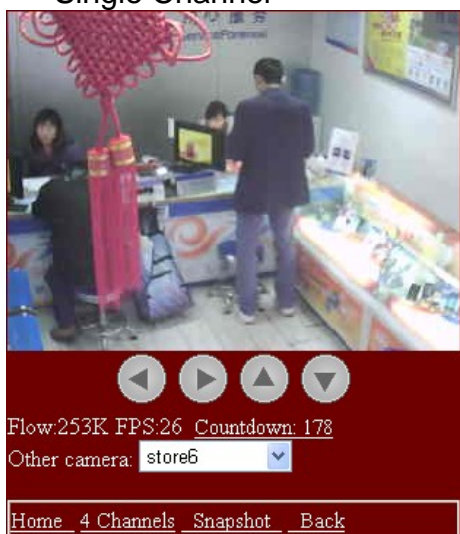
Camera SN:

Account:

Password:

4. Click add, fill the Camera Name (define as you like), Camera SN (on the label of the device), Account (default account is admin), Password (default password is None), click OK to finish, you can view the camera via single Channel or 4 Channels (add more than 4 cameras), as below:

Single Channel



4 Channels



Note:For single channel view ,you can control the ip camera from 4 directions(up,down,right,left)

5. Snapshot setting

click management---Modify----settings---ok

Enable snapshot
 function: to enable this feature, the camera can take pictures on-site regularly, and to upload pictures to our server, such as a photo every half hour. You can visit our servers record view these photographs, Understanding of the daily on-site situation.
 time: (Note: Only the time will make the snapshot)

weeks	time	operation
<u>add</u>		
weeks	<u>Select All</u> <u>Uncheck All</u>	
<input checked="" type="checkbox"/> Mon	<input checked="" type="checkbox"/> Tue	<input checked="" type="checkbox"/> Wed
<input checked="" type="checkbox"/> Thu	<input checked="" type="checkbox"/> Fri	<input checked="" type="checkbox"/> Sat
<input checked="" type="checkbox"/> Sun		
time		
Start:	00:00:00	end: 23:59:59
<input type="button" value="OK"/>		<input type="button" value="Cancel"/>

Interval:
 Every minutes (must be greater than 1 minute)

Enable snapshot and set the interval as above.

3.4 iPhone app for EasyN IP Camera

With this app you can remotely view and control your EasyN IP camera from your iPad, iPhone or iPod Touch. From wherever you are!

3.4.1 Features

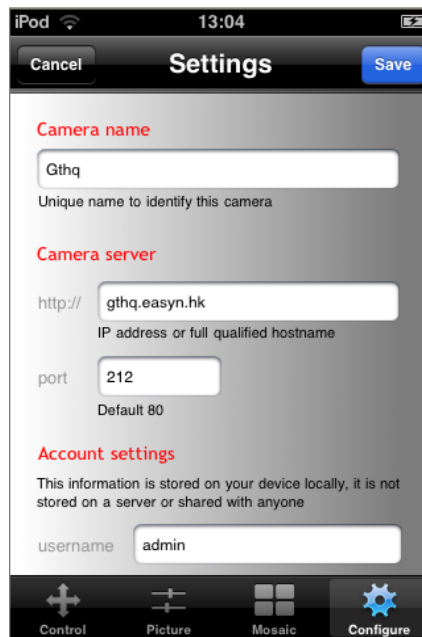
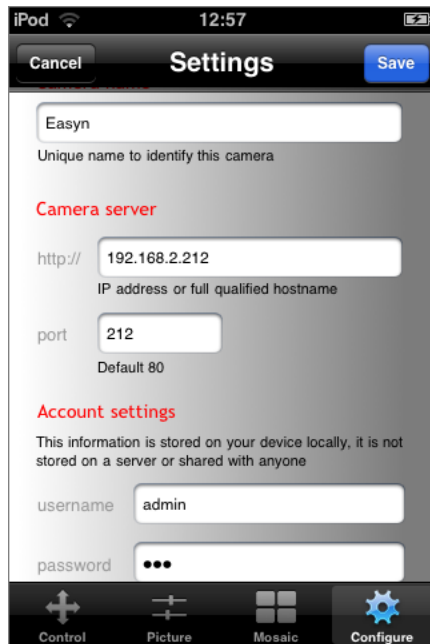
- Control the cameras in all 8 directions (if supported by the camera)
- Zoom in and out on the image by pinching (even when your camera doesn't support zoom)
- Fullscreen by rotating the device to a landscape position
- Fullscreen controls
- Swipe in fullscreen view to select another camera, this only work when not zoomed in (double tap to zoom to 100%)
- Take snapshots and save it to your camera roll
- Adjust brightness/contrast
- Mirror and flip is taken into account (so the controls will still work intuitively, even when the camera is mounted to a ceiling for example)
- Adjust brightness and contrast
- Multiple camera support (up to 144 cameras)
- Mosaic view for showing 4 cameras (in landscape) and 6 cameras (in portrait) simultaneously
- Swipe in mosaic view to view more other cameras
- Possibility to lock PTZ controls and/or rotation
- iOS 4 tested and supported
- Taking full advantage of retina display on iPhone 4

3.4.2 Operations and functions demonstration

Before you use the app, you can download the app at:

<http://itunes.apple.com/us/app/easyn-ip-control/id391442892?mt=8>

1. After finishing installing the app on your iPhone, open the app, click 'Configure' button, select '+' to add a IP camera ,the picture will shown as below:



Camera name: define it as you like

Camera server: For inner access, input IP address the ip camera, For outer access, input our built-in domain name (on the label of device) e.g hje.easyn.hk. How to fill the port, you can refer to chapter 4.1.1)

Account settings: input user name and password(same as IE browser view)

After filling all the information, click 'save' button on the top right corner to finish.

You can add more cameras as the above.

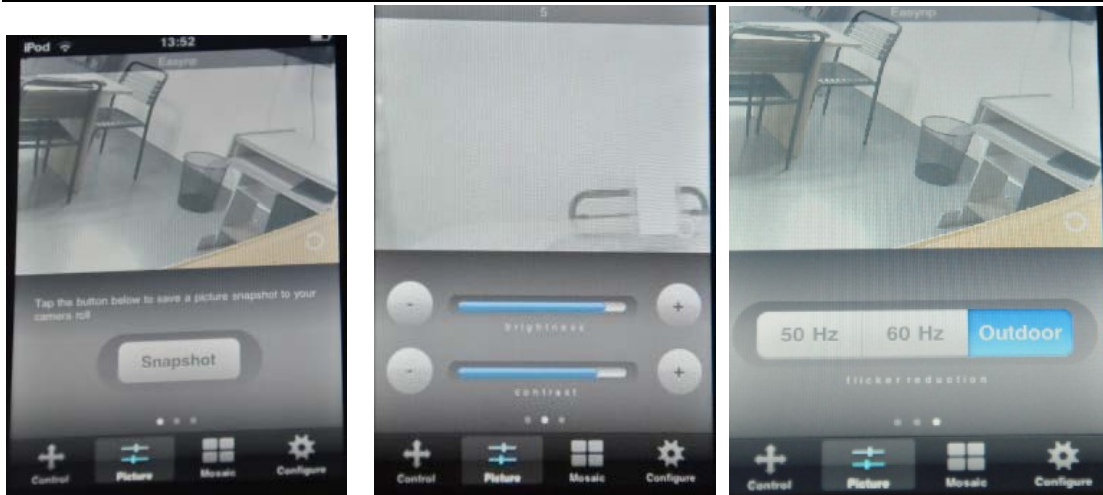
2. Click 'Mosaic' button for Mosaic view (if multiple cameras added)

Showing 4 cameras (in landscape) and 6 cameras (in portrait) simultaneously



3. Click 'Picture' button. Here you can :

- 1) Take a snap shot and the picture will auto-save to your iPhone
- 2) Adjust the brightness and contrast of the picture
- 3) Select the mode as your requirements: 50HZ、 60HZ、 Outdoor



4. Click 'control' button .Here you can set horizontal or vertical patrol for the IP Camera with pan/tilt.



4 How to view the camera in outside network

4.1 Using a router to access the Internet

Using a router to access the Internet by shared ADSL If a router is set for dial-up Internet access, it is not required to set ADSL dial-up account and password on the IP Camera.

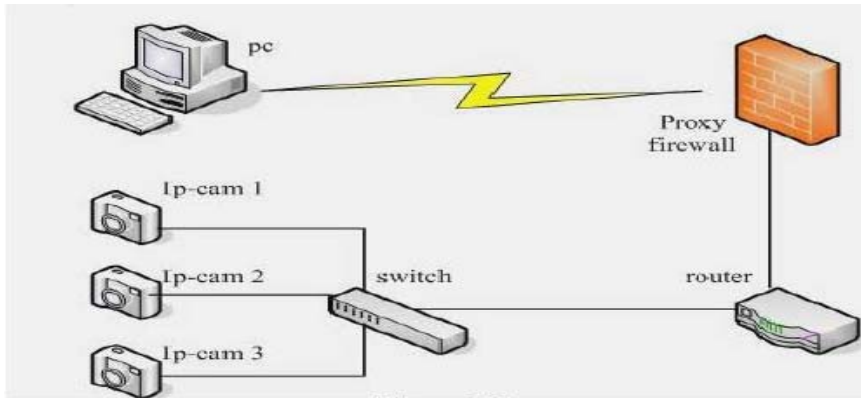
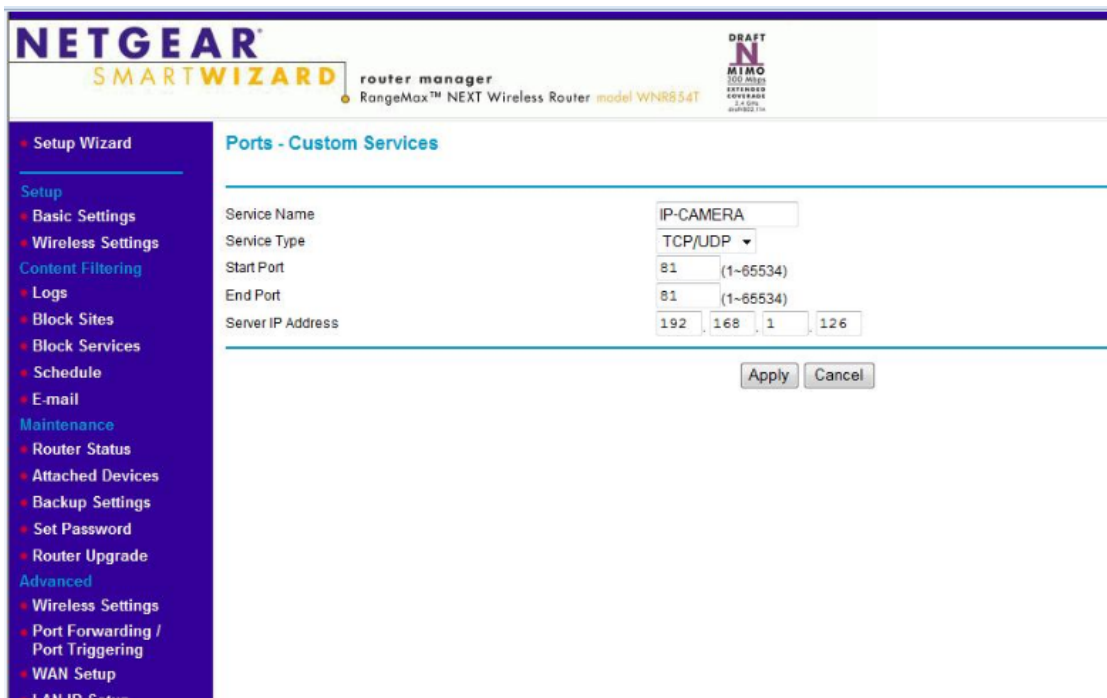
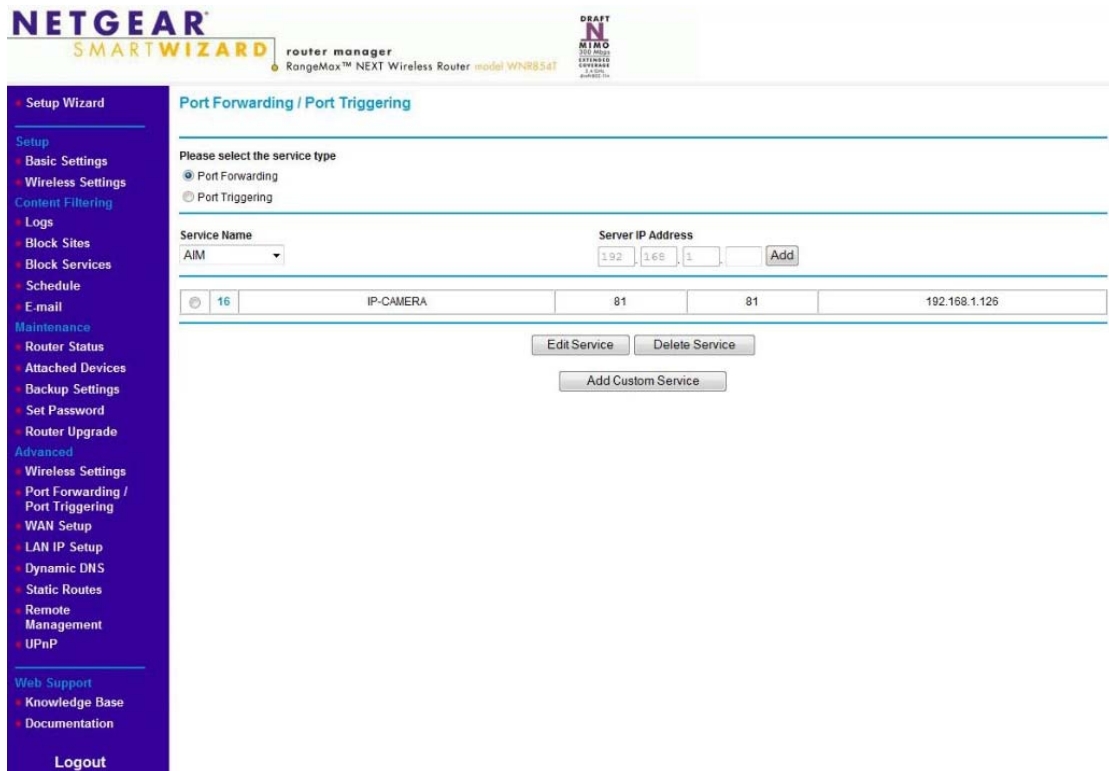


Figure 3.3

5.1.1 Do port forwarding in your routers:





- 1) Pls make sure the Server IP Address, start port and end port be same with your camera's.
- 2) Enter **IP Camera Finder** to set the basic configuration,
- 3) Login the Camera homepage as Administration.
- 4) Enter **DDNS Settings Page** and enable DDNS service. Click **<Submit>** and the device will reboot
- 5) You can access the Camera from Internet by domain name(like: <http://demo.easyn.hk>)

5.2 Static IP user

Static IP user is not need to use DDNS for remote access. When finished the setting of the IP Camera in LAN, and port forwarding in the routers, you can access the Camera directly from Internet by the WAN IP. You can obtain the WAN IP by two ways.



Your IP Address Is 116.25.51.115

Obtain the WAN IP address from the router

Take the WRT54G router of LINKSYS for example,

- 1) Obtain the IP address of the router (LAN gateway address), user name and password for logon to the router from the network administrator,
- 2) Enter the LAN IP address of the router; Open the **Status** page to find out the WAN address of the router. In this example, the address is 116.25.51.115.



Figure 3.5

Access the IP Camera from the Internet

User can access the IP Camera from the Internet, by enter WAN IP address + port number in the IE to access different IP Cameras. For example,

[Http://116.25.51.115:81](http://116.25.51.115:81) or [Http://116.25.51.115:812](http://116.25.51.115:812)

5.3 How to use other DDNS

For each ADSL reconnection, ISP will re-assign a new IP address for the IP Camera to facilitate the access. DDNS(Dynamic Domain Name Server) can map the dynamic IP address of an IP Camera to a fixed domain name. Therefore, we can access the IP Camera by the fixed domain name whether the IP address changes or not. The IP address is not necessary when you using the DDNS via the domain name to find your network.

- 1) Go to the website which Provides free domain name, register and apply a free domain name. such as <http://www.dyndns.com/>
- 2) Login the Camera homepage as Administration and enter “**DDNS Service Settings**” page input the name, password and Host . Then click<**SUBMIT**> and reboot Device.
- 3) Re-login the Camera homepage and enter “**DDNS Service Settings**” page to check the **DDNS Status** is **DynDns Succeed** or not.

- 4) You only need to enter the domain name(domain name+Port number http://easynhk.kicks-ass.net:81/) in the IE address bar, the browser will visit the IP Camera.

If multiple IP Camera are connected to the same router, enter DDNS dynamic domain +port number (for example, http:// easynhk.vicp.net:85/) in the address bar of the IE to access different IP Cameras .

5. Intelligent Video Alarm System

The web link: <http://app.easyn.hk/html/en/>

Intelligent Video Alarm System is a software with centralized management and powerful function and enable extending, the software supports all series products of EasyN. The following take managing Fseries product for example.

To compare with managing on web page, the intelligent system can not only support browser viewing and multi-ch viewing, but also support much characteristic function.

- Access by web browser, no need client-software
- Centralized management for lots of ipcam
- Real time monitoring with multi-ch
- Support snapshotting at appointed time
- Send alarm message to mobile phone and snapshot when alarming
- Support mobile phone real time monitoring and access alarm records
- Support to check status of ipcam by message
- Support reading logbook
- Support secondary users

When the first time to use the Intelligent Video Alarm System, need running playing Active X for the system. When access the page, it will notice to run the Active X if need, after running with the instruction, the viewing function will be OK.

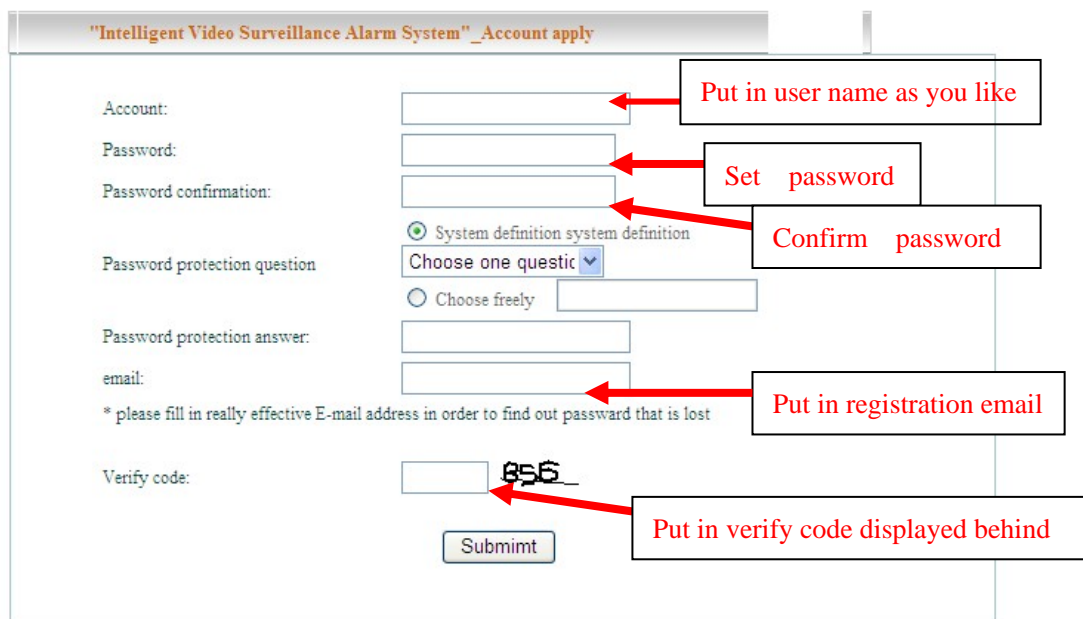
Detailed help, to consult online help file after accessing the page.



5.1 Registration and Login

Registration

The following picture for registration:

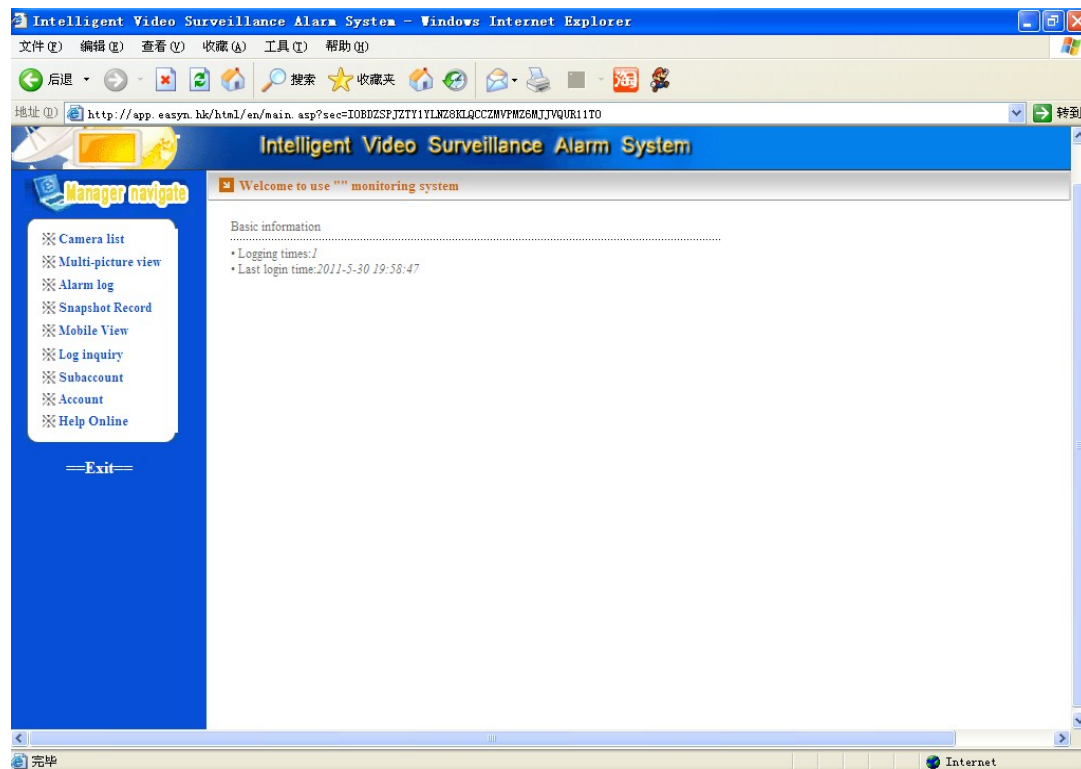


● Login

Run browser, then put in <http://app.easyn.hk/html/en/> then press Enter button on keyboard, then displaying the following page:

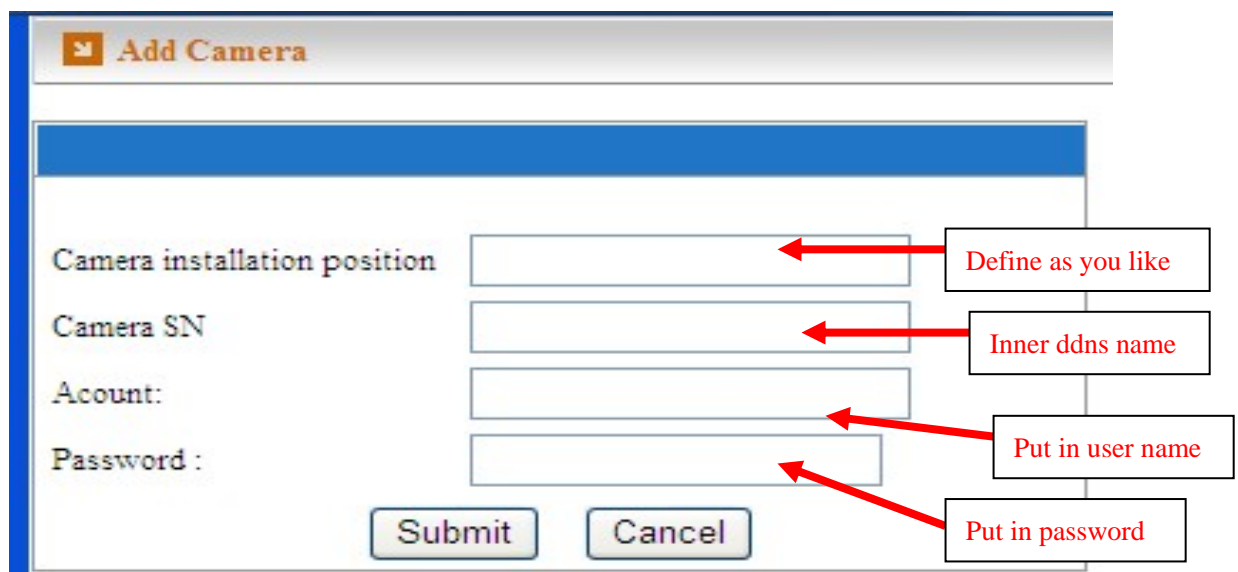
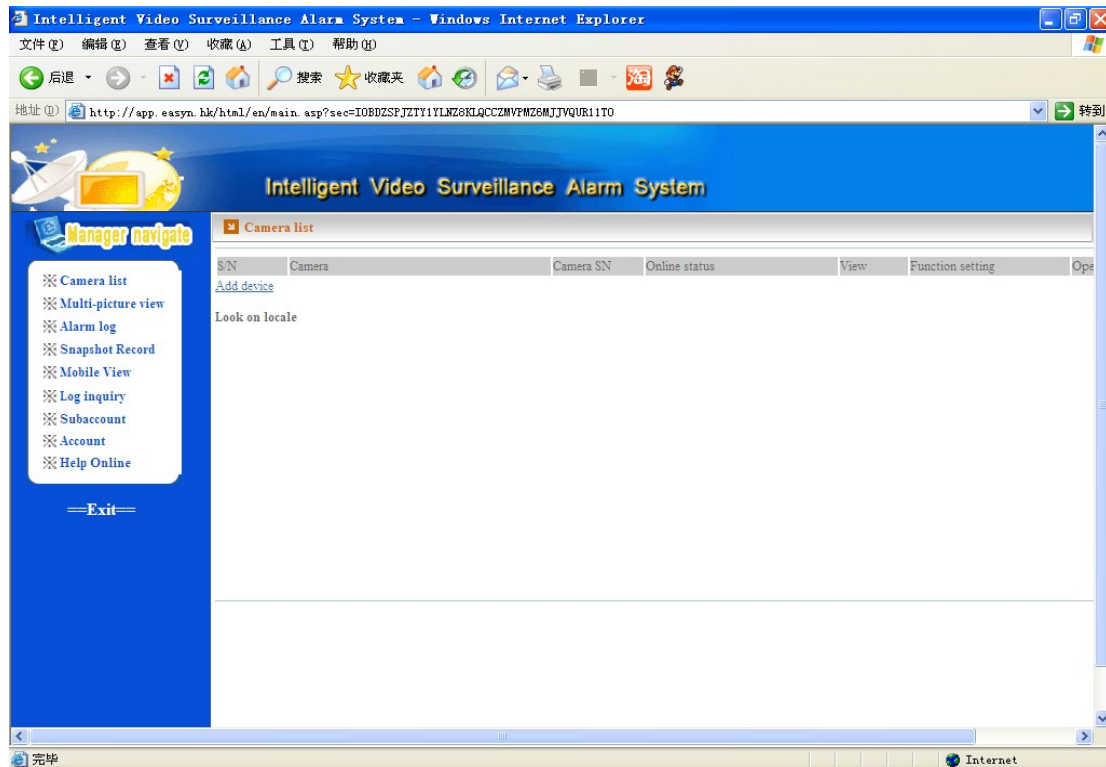


Put in user name and password then press Login button,access the main page,here will show the times about login and time about the nearly login,as the following picture:



5.2 Add equipments

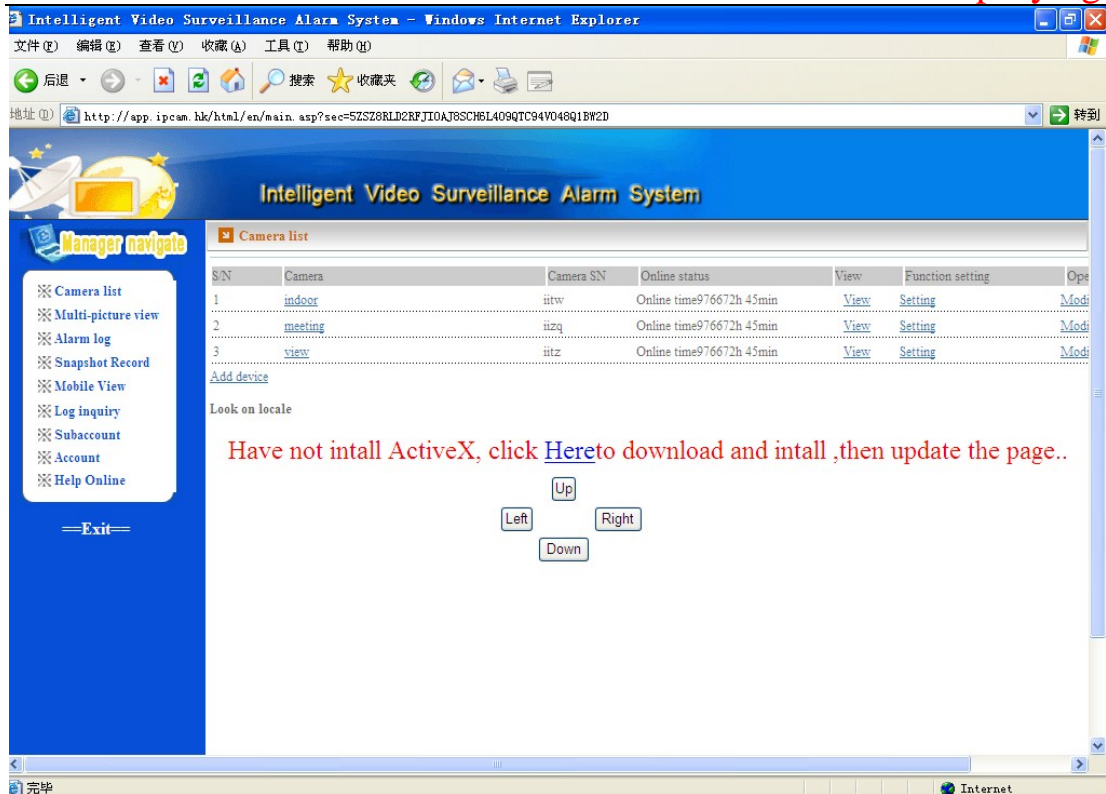
As the following picture,press Camera list to choose ipcam to add on;



5.3 Download and run Active X

If it is the first time to access the page, please run the Active X before playing video, the means as below:

- (1) access cameras list page
click camera list button then displaying as the following picture:



Press mouse left button on “Here” to download the Active X,display following picture:



Click “run” button then starting download,

After download,display a dialog for asking to set up,as following picture:



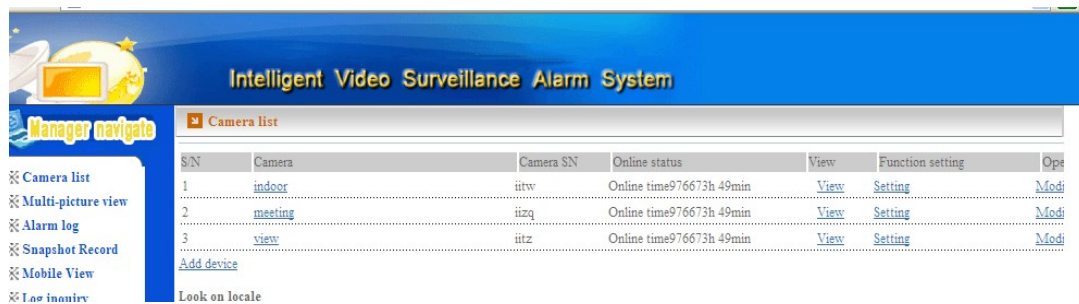
Click run button,(if the pc has a firewall or other protect software,it will ask for permission,pls permit).

Click the next button,dialog as following:

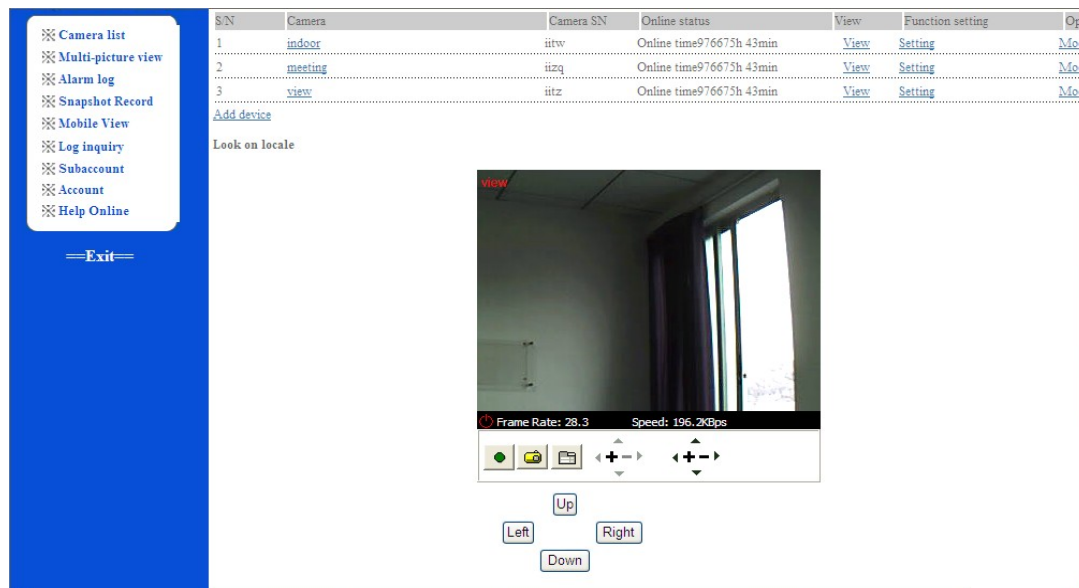


5.4 Monitor video viewing

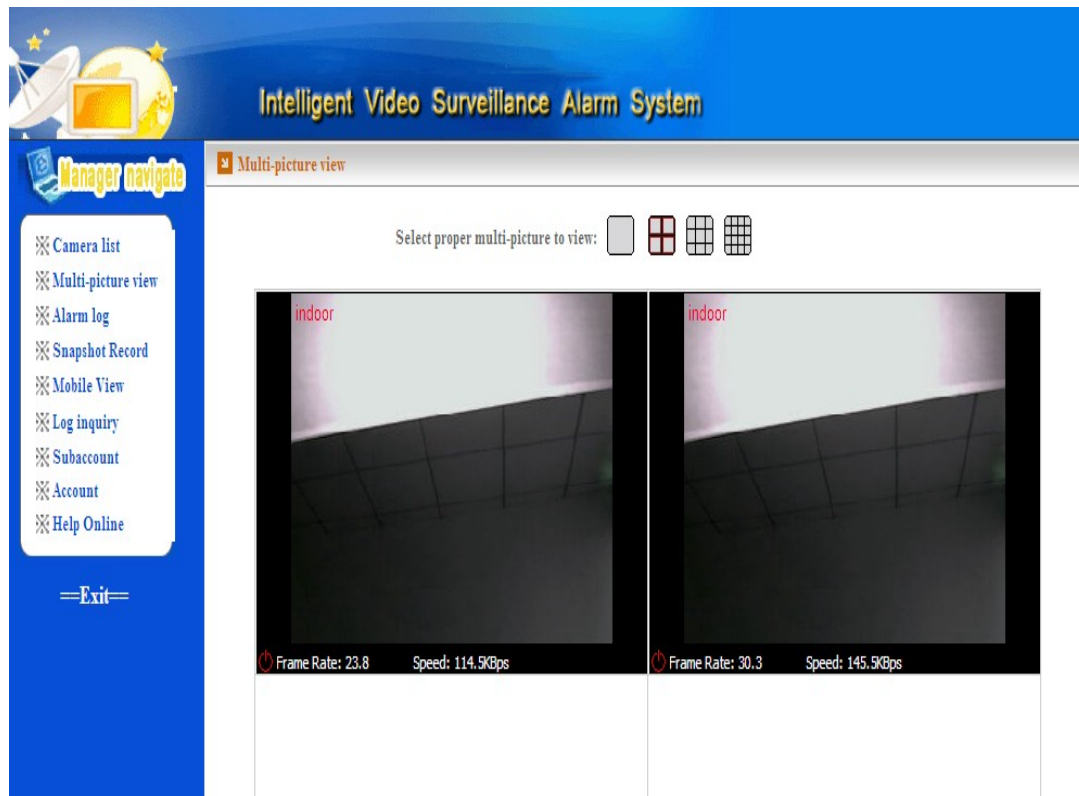
Click camera list button on left menu,the network video equipments will display as a list,as following picture:



Click the “View” button,the live video will display,as the following picture:

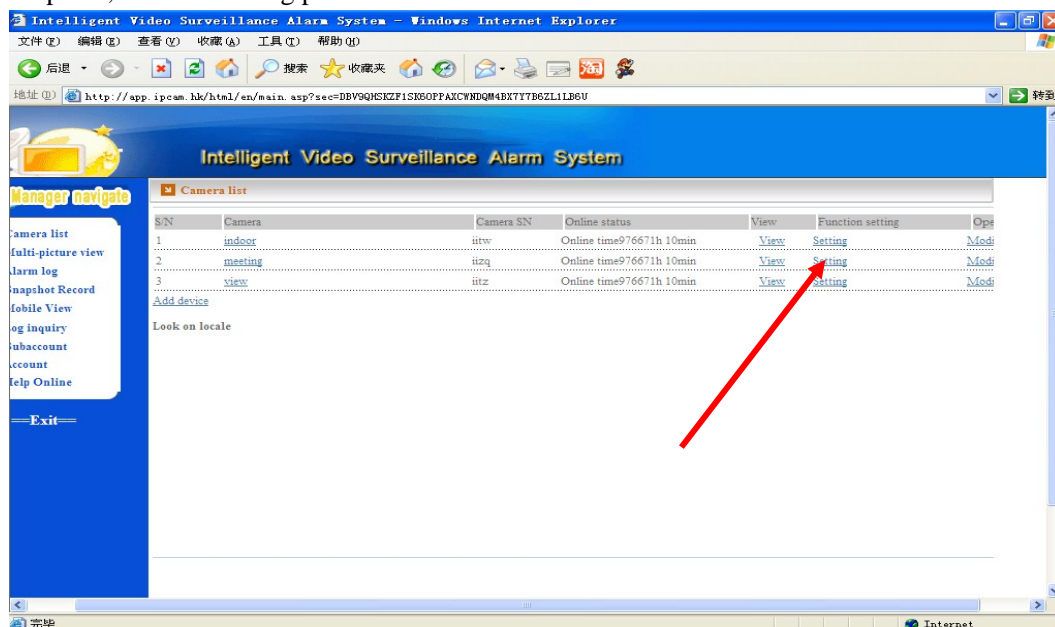


Click the “ multi-picture view” button on the left menu,access multi-ch viewing page,as the following picture”

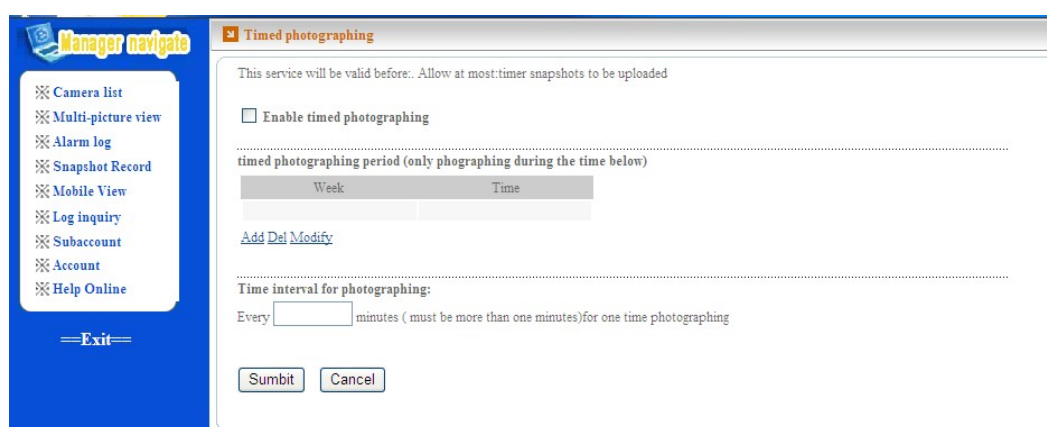
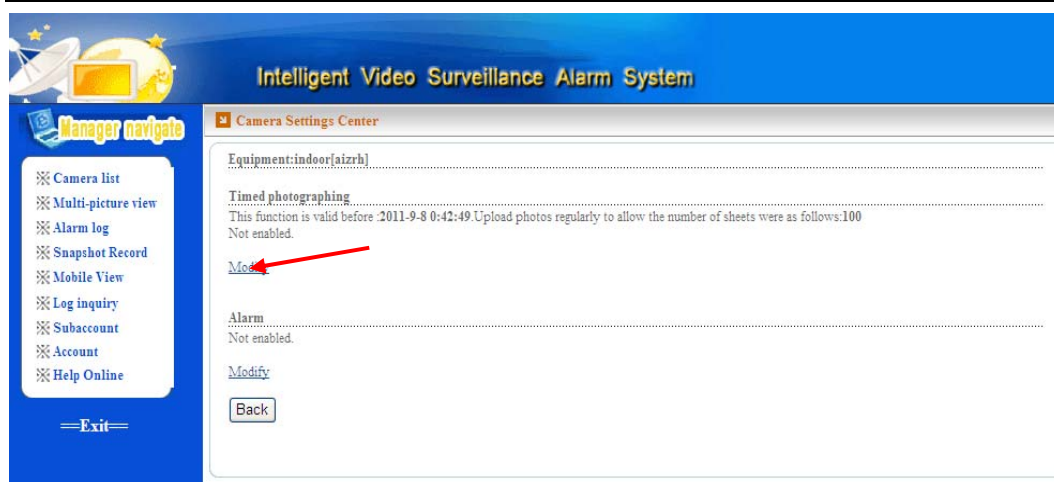


5.5 Snapshot at appointed time

Click camera list button on left menu,select “setting” button the camera you want to get the snapshot,as the following picture:



Click “modify” button,as the following picture:



Here can set the snapshot appointed time and how many pictures to upload.

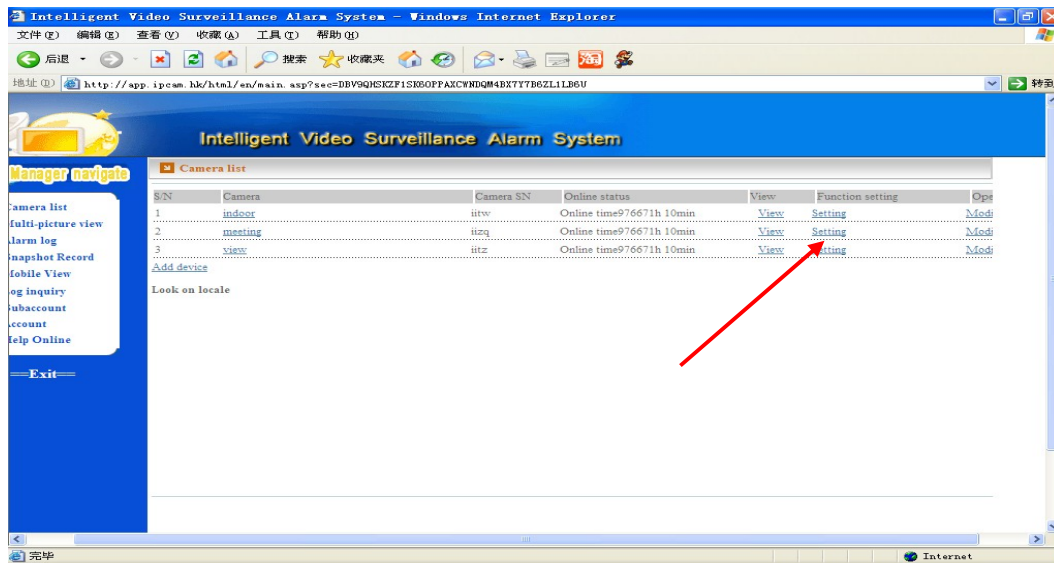
After setting,click "" button to save the settings.

Click the "" button on the menu on the right of the page,select the equipment,the picture uploaded to the server at appointed time could be viewed.

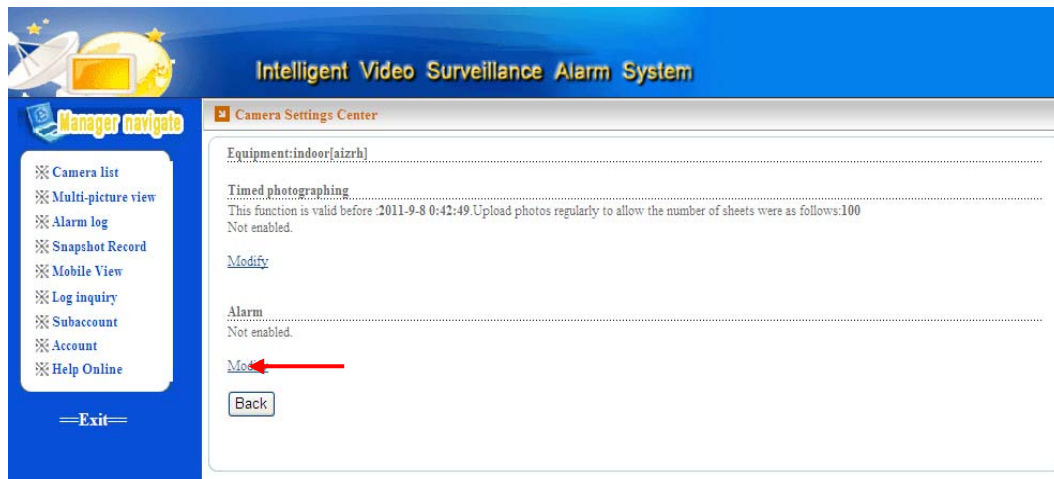
Select a picture,double click,the picture becomes larger.

5.6 Alarm setting

Here the alarm function can set the alarm time slot,snaphshoot after alarming and message notices,etc.As the following picture:



Click "setting", access the alarm snapshot setting page, as the following picture:



5.6.1 Alarm time slot setting

Only at the alarm time slot the alarm system could make alarming action.
Support function for select weeken, appoint time, induce alarm setting and alarm actions.
Such as the following picture:

5.6.2 snapshot at appointed time

Support setting time slot for snapshot, snapshotting with an interval time.
For appointed time snapshotting, need select the option as the following picture, also can set the interval time for snapshot.

6 FAQ

Note: Any questions you would meet, please check Network connections firstly. Check the working status revealed by the indicators on the network server, hub, exchange and network card. If abnormal, check the network connections.

1. I have forgotten the administrator username and/or password.

To reset the administrator username and password, Press and hold down the RESET BUTTON for 7 seconds. Release the power button and the username and password will be reset back to the factory default administrator username and password.

Default administrator username: **admin**

Default administrator password: No password

2. IP Address configuration

Check whether IP address of the IP Camera server shares the same subnet as your work station: Click My Computer >Control Panel> Network & Dial-up Connections > LAN > Attributes >Internet Protocols (TCP/IP), and check IP Address and Subnet Mask. Make sure they are in the same subnet when configuring IP Camera IP address manually.

Unable to access IP Camera via web browser

3. Network Configuration

Double Check to ensure that your HTTP server software is configured and running properly. If you're running any firewall software, make sure it's allowing inbound connections to port 80, Also, if you happen to be using a cable/DSL router, make sure you've set up port forwarding properly. (consult your router's documentation for more information). If none of these seem to be the problem, it's documentation for more information). If none of these seem to be the problem, it's also possible that your ISP is blocking inbound connections to port 80-many ISPs have done this because of internet worms such as Code Red, If this is the case, you'll have to setup your HTTP server on an alternate port (such as 8080).

4.No pictures Problems with ActiveX Controller

If Internet Explorer is used as WEB Browser, download ActiveX controller and set the safety property of IE in the PC when you view it first time:

“IE” browser > “Tool” > “Internet Proper” > “Security”> “Custom Level” > “ActiveX control and Plug-ins” three options of front should be set to be “Enable”, The ActiceX programs read by the computer will be stored, as follows:

Enable: Download unsigned ActiveX controls

Enable: Initialize and script ActiveX controls not marked as safe

Enable: Run ActiveX controls and plu-ins

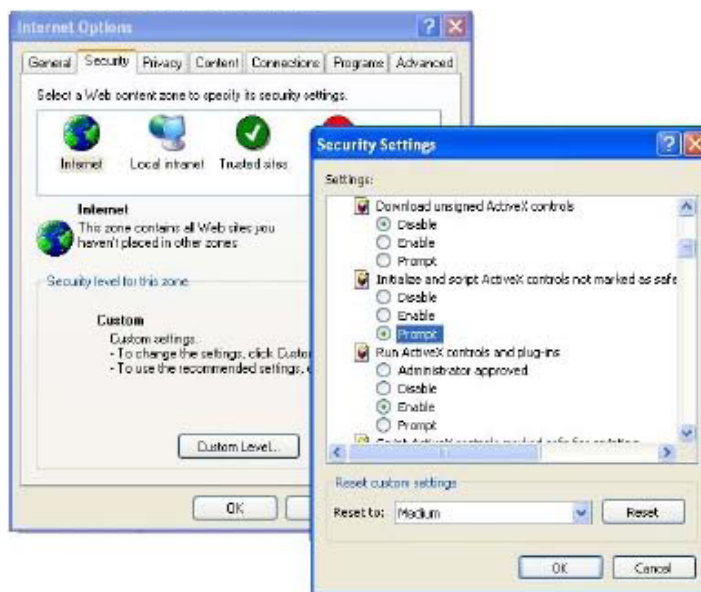


Figure 4.1

5.Problems with network bandwidth

The image frame rate is subjected to the following factors: 1, network bandwidth; 2, PC performance, network environment and display preference setting (brightness, theme, etc); 3, the number of visitors (Too many visitors will slow down the image frame rate.); 4, choice of switch or hub (Use a switch for multiple IP Camera Servers rather than a HUB,).

FCC warning statement

This equipment has been tested and found to comply with the limits for a Class B digital device, pursuant to part 15 of the FCC Rules. These limits are designed to provide reasonable protection against harmful interference in a residential installation. This equipment generates, uses and can radiate radio frequency energy and, if not installed and used in accordance with the instructions, may cause harmful interference to radio communications. However, there is no guarantee that interference will not occur in a particular installation. If this equipment does cause harmful interference to radio or television reception, which can be determined by turning the equipment off and on, the user is encouraged to try to correct the interference by one or more of the following measures:

- Reorient or relocate the receiving antenna.
- Increase the separation between the equipment and receiver.
- Connect the equipment into an outlet on a circuit different from that to which the receiver is connected.
- Consult the dealer or an experienced radio/TV technician for help.

This device complies with part 15 of the FCC Rules. Operation is subject to the following two conditions: (1) This device may not cause harmful interference, and (2) this device must accept any interference received, including interference that may cause undesired operation.

Caution: Any changes or modifications to this device not explicitly approved by manufacturer could void your authority to operate this equipment.

FCC RF Radiation Exposure Statement

This equipment complies with FCC RF radiation exposure limits set forth for an uncontrolled environment. This device and its antenna must not be co-located or operating in conjunction with any other antenna or transmitter.

“To comply with FCC RF exposure compliance requirements, this grant is applicable to only Mobile Configurations. The antennas used for this transmitter must be installed to provide a separation distance of at least 20 cm from all persons and must not be co-located or operating in conjunction with any other antenna or transmitter.”

7 Warranty Card

Manufacturing Date:		Product Specification:	
Inspector:			
Version number :			
Product Model			
Sale Dates			
User Company			
User name			
Customer Address			
Contact Number			
Maintain Date	Failure Conditions	Results of Maintenance	
Remark:			
Note: please fill the card and offer it with products if guarantee of repair			

WE NEVER STOP TRYING!
www.easyntech.com

Ver.: MFEE1103A