

JIMMY NEUTROU ULTRA ORB

OWNER'S MANUAL

INTRODUCTION

Your Echo Jimmy Genius Ultra Orb is an all-terrain toy vehicle. It has two big wheels extending over the top of it, allowing it to travel in any direction you choose and perform many exciting stunts. Built to 1/14 scale, it reaches speeds up to 400 feet per minute.

The Ultra Orb comes in two frequencies (27 MHz & 49 MHz). You can race with a friend, provided your Ultra Orbs operate on different frequencies.

INSTALLING BATTERIES

Having a parent or adult to help your install batteries in your Ultra Orb is strongly recommended.

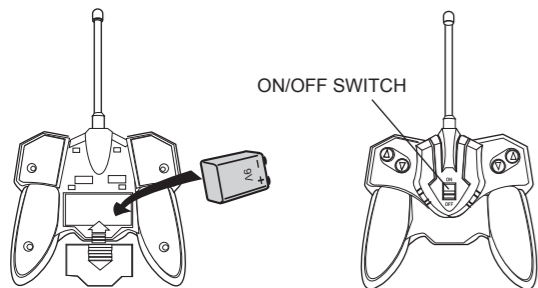
Warning: Dispose of old batteries promptly and properly. Do not burn or bury them.

Cautions:

- Use only fresh batteries of the required size and recommended type.
- Do not mix old and new batteries, different types of batteries (standard, alkaline, or rechargeable), or rechargeable batteries of different capacities.
- If you do not plan to use the Ultra Orb for several days, remove the batteries. Batteries can leak chemicals that can destroy electronic parts.
- Never leave dead or weak batteries in the Ultra Orb and transmitter.

A) TRANSMITTER

The transmitter requires one 9V battery (not included) for power.

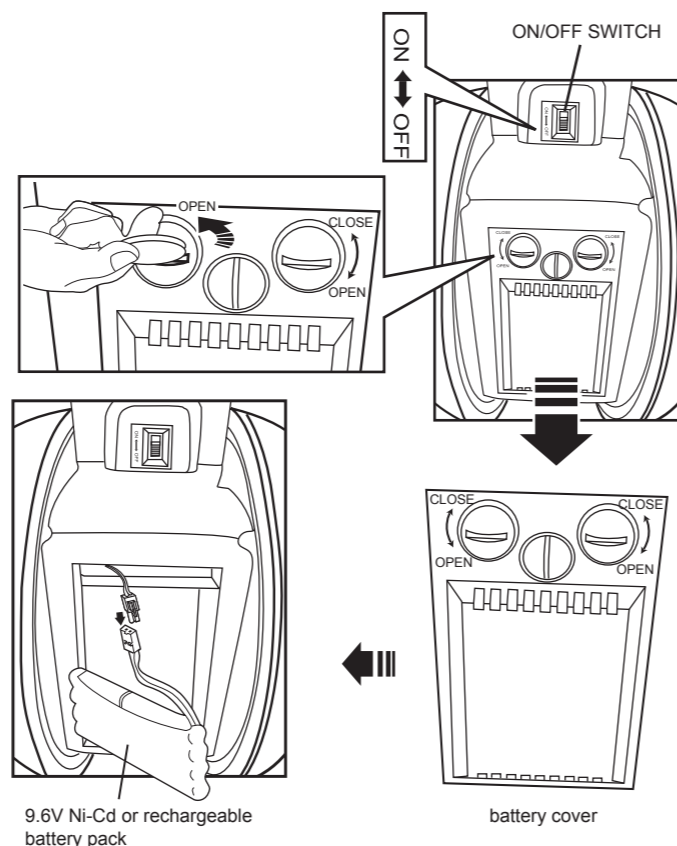


1. Slide ON/OFF on the transmitter to OFF.
2. Slide the battery compartment cover in the direction of the arrow to remove it.
3. Place the 9V battery in the compartment according to the polarity symbols (+ and -) marked inside.
4. Replace the cover and snap it shut.

When the range of your transmitter decreases, replace its battery.

B) THE ULTRA ORB

Your Ultra Orb uses a 9.6V Ni-Cd rechargeable battery pack (not included) for power. Before using the battery pack, you must charge it.



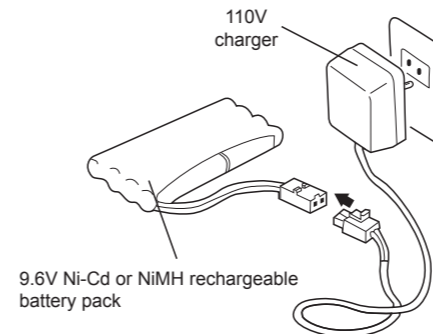
1. Slide ON/OFF switch on the bottom of the Ultra Orb to OFF.
2. Use a coin to turn the battery compartment cover's latches in the direction of the arrows until they stop, then remove the cover.
3. Attach the battery pack's white plastic connector to the Ultra Orb's matching connector. Do not force them together. They only fit one way. Carefully tuck the wire into the compartment recess and place the battery pack into the compartment.
4. Replace the cover, making sure not to pinch the wires. Then secure the latches with a coin.
5. When the Ultra Orb stops operating properly, recharge the battery pack.

BATTERY CHARGING

Note: Follow the instruction on your 9.6V rechargeable Ni-Cd battery pack and charger system.

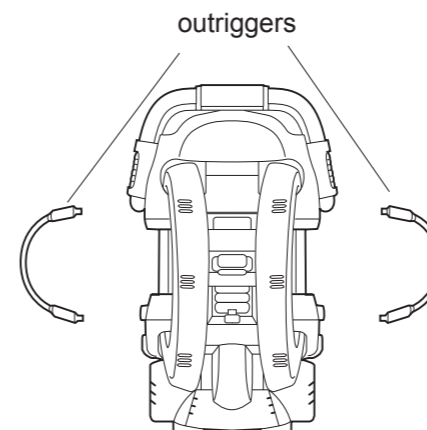
- The 9.6V rechargeable Ni-Cd battery pack must be charged prior to use.
- When charging Ni-Cd battery pack, plug charger into household outlet. Connect the charger with the Ni-Cd battery pack.
- Four hours is all that is required for a fully charged battery pack. Charging the battery pack for more than 4 hours will not give you the longer running time.
- After use, the battery pack will be hot. Wait at least 10 minutes until the battery pack cools down before charging. Recharging a hot battery pack will greatly reduce the

recharging life of your battery pack.



DRIVING THE ULTRA ORB

1. Insert the two supplied outriggers into the holes on each side of the Ultra Orb with the outriggers curved upwards.
2. Slide ON/OFF on the bottom of the Ultra Orb to ON.
3. Slide ON/OFF on the transmitter to ON.
4. Use the transmitter's control buttons to control the movement and direction of the Ultra Orb.
5. When you finish driving, slide ON/OFF on both the Ultra Orb and the transmitter to OFF.



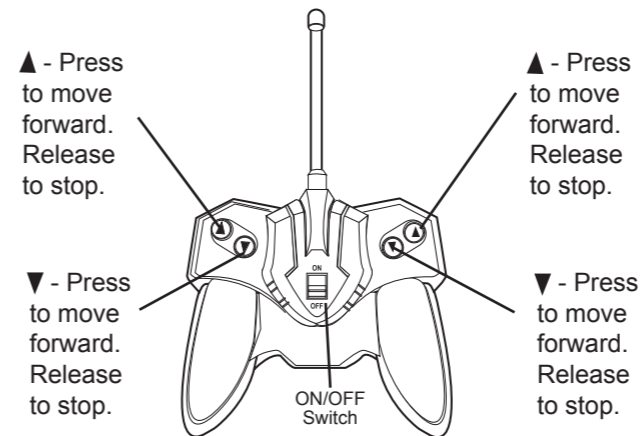
EXPERT SKILLS

When the Ultra Orb leans to either side and you are riding on the outriggers, press either ▲ or ▼ to drive upright again.

While moving forward, quickly release Left and Right ▲ and press Left and Right ▼. The Ultra Orb rolls over!

While driving upside down:

- Hold down ▲ to move backwards in a rocking motion.
- Hold down ▼ to move forward in a rocking motion.



- ▲ and ▼ - Press at the same time to turn right spinning.
- ▼ and ▲ - Press at the same time to turn left spinning.

NOTE: While driving upside down, the buttons become opposite of their original function. For example, causes the Ultra Orb to move backward, and spin left causes it to spin right.

Warnings:

- Never play with the Ultra Orb in the street.
- Be careful to avoid collisions with people and objects.
- Don't touch the wheels when you turn on the Ultra Orb. This can cause injury.

HELPFUL HINTS

- Running your Ultra Orb continuously for long periods generates high heat levels. Heat causes wear and tear on the motor. To help keep heat levels down, when your Ultra Orb's battery pack dies, let the Ultra Orb cool at least 10 minutes before installing a new or newly charged battery pack.
- If someone uses a CB nearby, it might interfere with control of the Ultra Orb. If this happens, move the Ultra Orb away from the CB.
- You cannot operate your Ultra Orb near devices with transmitters that use the same frequency as your Ultra Orb (27 MHz or 49 MHz). Check your Ultra Orb's box to see which frequency your Ultra Orb uses.
- If the Ultra Orb moves slowly and you just installed a fully charged battery pack, check the wheel mechanisms for lint, thread, hair, or dust.

CARE

- Do not drive the Ultra Orb through puddles or mud, on a wet floor, or in sand, rain, or snow. These can damage it.
- Do not expose the Ultra Orb or transmitter to temperature extremes, and do not store them in direct sunlight or near a heat source.
- Do not leave the Ultra Orb or transmitter outside overnight. Night dampness can damage their electronic circuits.
- To protect the Ultra Orb's mechanisms from lint and hair, do not drive the car on carpet.
- Wipe the Ultra Orb and transmitter with a damp cloth occasionally to keep them looking new. Do not use harsh chemicals to clean them.

THE FCC WANTS YOU TO KNOW

NOTE: The manufacturer is not responsible for any radio or TV interference caused by unauthorized modifications to this equipment. Such modifications could void the User's authority to operate the equipment.

Modifying or tampering with the Ultra Orb or transmitter's internal components can cause a malfunction and void your FCC authorization to operate it.