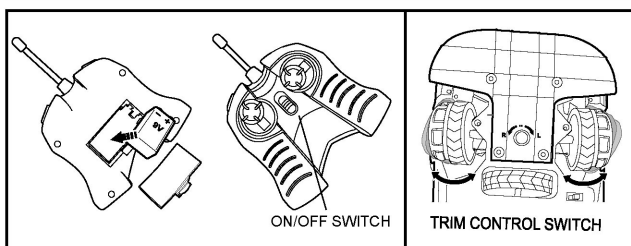


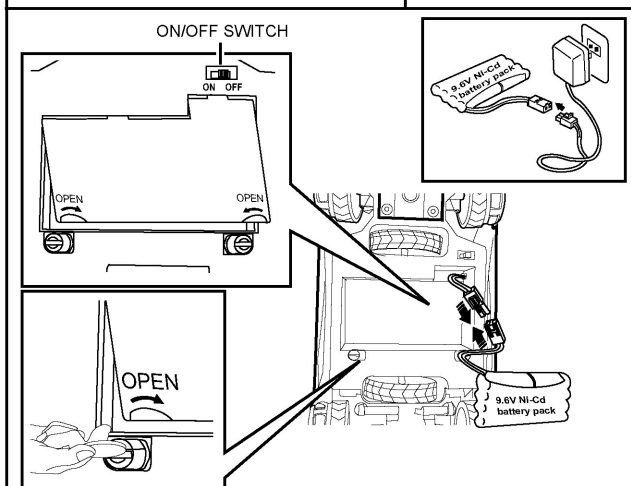
# DIRECTIONAL EXTREME™

SCALE: 1 : 12



ON/OFF SWITCH

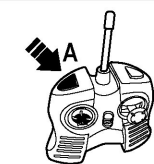
TRIM CONTROL SWITCH



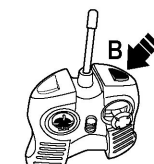
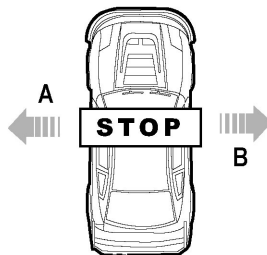
ON/OFF SWITCH

9.6V Ni-Cd battery pack

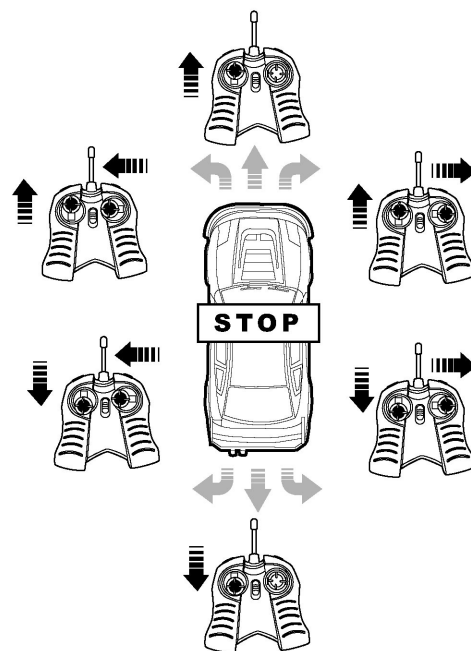
9.6V Ni-Cd battery pack



PRASS A - LEFT HORIZONTAL SLIDING ACTION.



PRASS B - RIGHT HORIZONTAL SLIDING ACTION.



## OPERATING INSTRUCTIONS

Please read carefully before starting to operate. It is recommended to operate the vehicle under adult supervision. Not recommended for children under 6 years of age. Keep the instruction manual for future reference.

**Note:** Cannot play 2 vehicles together in the same frequency.

## MULTIPLE FUNCTION

- Runs forward and backward, turns left and right, stops.
- Horizontal Sliding Action for Left / Right side.

## BATTERY REQUIREMENT(Included)

- One "9V" alkaline battery for transmitter.
- 1 "9.6V" battery pack for vehicle.
- One charger.

## BATTERY INSTALLATION

### (A) TRANSMITTER

- 1) Slide ON/OFF to OFF.
- 2) Grasp the tap of the battery compartment cover and lift the cover up.
- 3) Put the "9V" alkaline battery in the compartment according to the polarity symbols(+ and -)marked inside.
- 4) Replace the battery compartment cover.

### (B) VEHICLE

- 1) Slide ON/OFF to OFF.
- 2) Insert a coin into the slot on the battery cover and slide the cover back until it clicks. Lift and open the cover.
- 3) Put the "9.6V" battery pack in the compartment according to the polarity symbols(+ and -)marked inside.
- 4) Close the cover and slide it forward until it clicks.

## HOW TO OPERATE

- 1) Slide ON/OFF on the bottom of the vehicle to ON.
- 2) Slide ON/OFF on the transmitter to ON.
- 3) Use the transmitter's levers to control the movement and direction of the

vehicle. Always keep the vehicle within the range of control.

**Note:** If the vehicle moves slowly or does not move at all, replace the batteries with fresh ones.

### Left Control Lever

- Push forward to move forward.
- Pull backward to move backward.
- Release to stop.

### Right Control Lever(Works together with Left Control Lever)

- Push left to turn left.
- Push right to turn right.
- Release to go straight.
- 4) Slide ON/OFF switches on both vehicle and transmitter to OFF when you are not to play with it.

## BATTERY CAUTION

- Do not mix battery types.
- Do not mix old and new batteries.
- Replace all together.
- Observe correct polarity.
- Remove batteries when not in use.
- Non-rechargeable batteries are not to be recharged.
- Rechargeable batteries are to be removed from the toy before being charged.
- Rechargeable batteries are only to be charged under adult supervision.
- Only batteries of the same or equivalent type as recommended are to be used.
- Exhausted batteries are to be removed from the toy.
- The supplied terminals are not to be short circuited.

**Note:** Dispose of old batteries promptly and properly, do not burn or bury them.

## BATTERY CHARGING

**NOTE:** Follow the instruction on your 9.6V rechargeable Ni-Cd battery pack and charger system.

- The 9.6V rechargeable Ni-Cd battery pack must be fully charged prior to use.

- When charging rechargeable Ni-Cd battery pack, first connect the charger with the 9.6V rechargeable Ni-Cd battery pack, then plug the charger into a household outlet.

- Four hours is all required for fully charging the battery pack. Charging the battery pack for more than 4 hours will not give you longer running time.

- When your vehicle starts to move slowly, it is time to recharge the battery pack.

- After use, the battery pack will be hot. Wait at least 10 minutes until the battery pack cools down before charging. Recharging a hot battery pack will greatly reduce the recharging life of your battery pack.

## BATTERY WARNING INFORMATION

- The battery pack must be charged by adult.
- Do not charge battery pack that shows leakage and corrosion.
- Do not charge battery pack if it is hot.
- Do not dispose of battery in fire.
- Do not attempt to disassemble the battery pack.
- Never leave dead or exhausted battery pack in the battery compartment.

## TRIM CONTROL SWITCH

Trim switch is located on the chassis of vehicle between the front tires. It is used to align the wheels of your vehicle for consistent turning and drive. Turn the switch clockwise and anti-clockwise until desired alignment is reached.

## THE FCC WANTS YOU TO KNOW:

**NOTE:** The manufacturer is not responsible for any radio or TV interference caused by unauthorized modifications to this equipment. Such modifications could void the User's authority to operate the equipment.