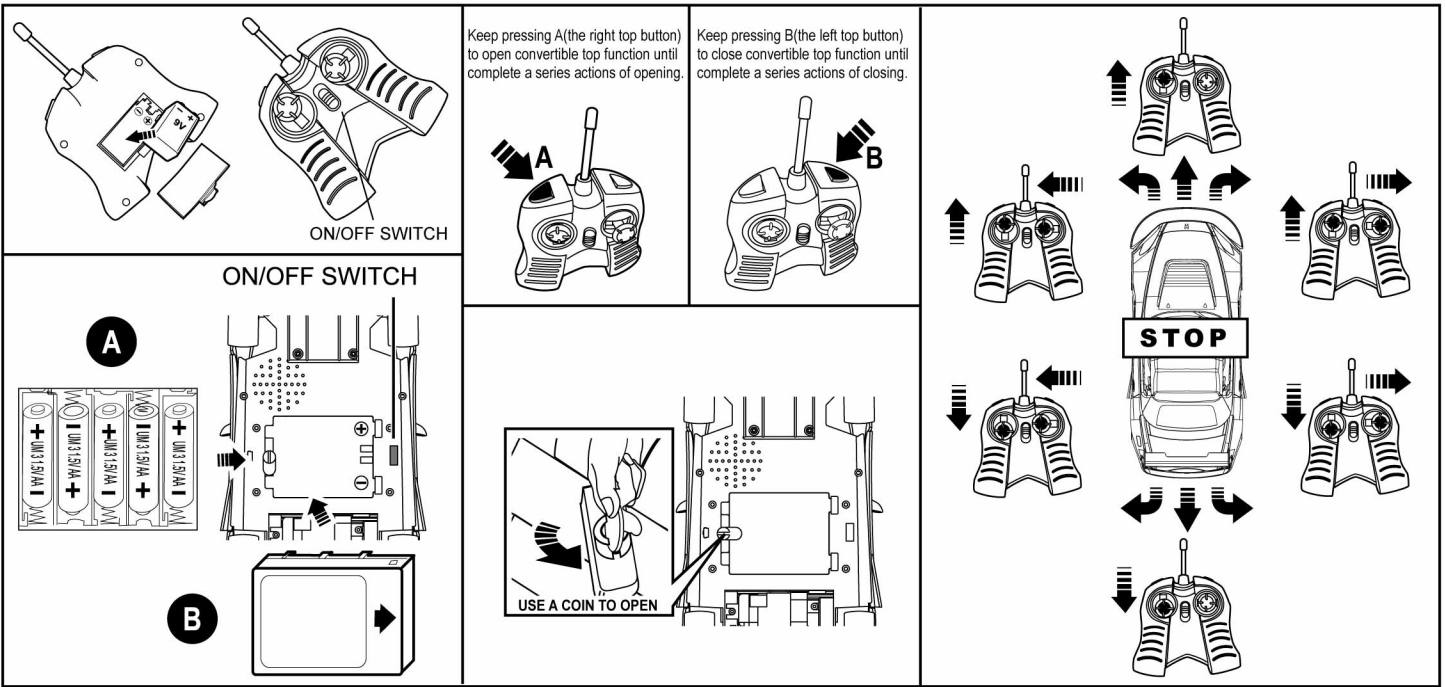


RIC HONDA S2000™

SCALE 1:12



OPERATING INSTRUCTIONS

Please read carefully before starting to operate. It is recommended to operate the vehicle under adult supervision.

Keep the instruction manual for future reference.

Note: Cannot play 2 vehicles together in the same frequency. Screw at bottom of styrofoam must be released before taking vehicle out from styrofoam.

CAUTION-ELECTRIC TOY

Not recommended for children under 6 years of age. As with all electrical products, precautions should be observed during handling and use to prevent the risk of electric shock.

FEATURES

- Full Function- runs forward, backward, turns left and right, stops.
- Runs with working headlights.
- Radio control with open/close convertible top function.

BATTERY REQUIREMENT (INCLUDED)

- One "9V" battery for transmitter.
 - One "6V" battery pack or 5"AA" batteries for vehicle.
 - One charger.
- Alkaline batteries recommended.

BATTERY INSTALLATION

(A) TRANSMITTER

- 1) Slide ON/OFF to OFF.
- 2) Grasp the tab of the battery compartment cover and lift the cover up.
- 3) Put the "9V" battery in the compartment according to the polarity symbols (+ and -) marked inside.
- 4) Replace the battery compartment cover.

(B) VEHICLE

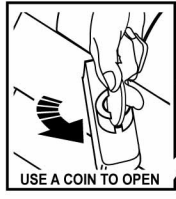
- 1) Slide ON/OFF on the bottom of the vehicle to OFF.
- 2) Use a coin to turn the battery door stopper until it stops and remove the battery door.
- 3) Install the batteries in the compartment as indicated by the polarity symbols(+ and -)marked inside.
- 4) Replace the battery door and use a coin to turn the stopper back.

HOW TO OPERATE

- 1) Slide ON/OFF on the bottom of the vehicle to ON.

Keep pressing A(the right top button) to open convertible top function until complete a series actions of opening.

Keep pressing B(the left top button) to close convertible top function until complete a series actions of closing.



USE A COIN TO OPEN

- 2) Slide ON/OFF on the transmitter to ON.

- 3) Use the transmitter's levers to control the movement and direction of the vehicle.

Left Control Lever

- Push forward to go forward.
- Pull backward to go backward.
- Release to stop.

Right Control Lever(works together with left control lever)

- Push left to turn left.
- Push right to turn right.
- Release to go straight.

Radio control with open/close convertible function.

Press A(the left top button)/B(the right top button) to open/close convertible top function.

- 4) Slide ON/OFF switches on both vehicle and transmitter to OFF when you are not to play with it.

BATTERY CHARGING

Note: Follow the instruction on the "6V" rechargeable Ni-Cd battery pack and charger.

- The "6V" rechargeable Ni-Cd battery pack must be fully charged prior to use.
- When charging the "6V" Ni-Cd battery pack, first connect the charger with the "6V" Ni-Cd battery pack, then plug the charger into a household outlet.
- Four hours is all that required for fully charging the battery pack. Charging the rechargeable battery pack for more than 4 hours will not give you longer operation time.
- When your vehicle starts to move slowly, it is time to recharge the battery pack.
- After playing with the vehicle, the battery pack may be hot. Wait at least 10 minutes until the battery pack cools down before charging. Do not recharge a battery pack while it's hot, as it will greatly reduce the recharging life of the battery pack.

CAUTION

- Battery pack must be charged by an adult.
- Batteries should only be replaced by an adult.
- Non-rechargeable batteries are not to be recharged.
- Different types of batteries or new and used batteries are not to be mixed.
- Only batteries of the same or equivalent type as recommended are to be used.
- Batteries are to be inserted with the correct polarity.

- Exhausted batteries are to be removed from the toy.

- The supply terminals are not to be short circuited.

- Do not dispose of batteries in fire.

- Batteries are to be removed from the toy when not in use.

Note: Dispose of old batteries promptly and properly; do not burn or bury them.

THE FCC WANTS YOU TO KNOW:

NOTE: This equipment has been tested and found to comply with the limits for a Class B digital device, pursuant to 15 of the FCC Rules.

These limits are designed to provide reasonable protection against harmful interference in a residential installation. This equipment generates, uses and can radio frequency energy and, if not installed and used in accordance with the instructions, may cause harmful Interference to radio communications. However, there is no guarantee that interference will not occur in a particular installation. If this equipment does cause harmful Interference to radio or television reception, which can be determined by turning the equipment off and on, the user is encouraged to try to correct the Interference by one or more of the following measures:

- Reorient or relocate the receiving antenna.
- Increase the separation between the equipment and receiver
- Connect the equipment into an outlet on a circuit different from that to which the receiver is connected.
- Consult the dealer or experienced radion /TV technician for help

FCC NOTE:

The manufacturer is not responsible for any radio or tv interference caused by unauthorized modifications to this equipment. Such modifications could void the user's authority to operate the equipment.



©2005 ECHO TOYS LTD. ALL RIGHTS RESERVED.
ROOM 1108, PENINSULA CENTRE, 67 MODY ROAD,
TSIM SHA TSUI EAST, KOWLOON, HONG KONG.
WEB SITE: <http://www.echotoys.com.hk>

ITEM: 913554A
MADE IN CHINA