



ring
Smoke/CO Listener
For Ring Alarm



Add peace of mind to your Ring Alarm.

Ring Smoke/CO Listener is a smart sound sensor for your Ring Alarm system. It works in tandem with one standard smoke or CO alarm (or smoke/CO combo).

When your smoke or CO alarm begins to sound, your Alarm system notifies you of the problem, wherever you are. If your system is professionally monitored, our monitoring center will also be notified.

Before you install...

Smoke and CO alarms have a finite lifespan, after which they must be replaced. Refer to the manufacturer's recommendations for details. If your alarm has expired, it must be replaced before you install your Ring Smoke/CO Listener.

Contents

- 1. Diagram
- 2. In-app Setup
- 3. Pairing the Listener
- 4. Physical Installation
- 5. Additional Information

1. Say hello to your Ring Smoke/CO Listener.

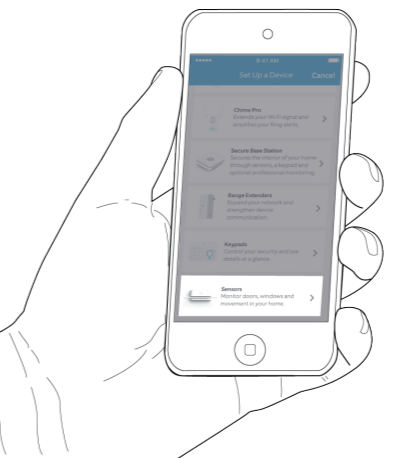


2. Set up your Ring Smoke/CO Listener in the Ring app.

Begin the setup process near your Ring Alarm Base Station.

In the Ring app, tap **Set Up a Device**. Choose **Security Devices**, then **Sensors**, then **Ring Smoke/CO Listener**, then tap **Add Device**.

To complete the setup process, follow the in-app instructions.



3. Pair your Ring Smoke/CO Listener with your Alarm Base Station.

When prompted, scan the QR Code or enter the PIN.

This begins the pairing process. The QR Code and PIN are on the back of your Listener and in the product packaging.

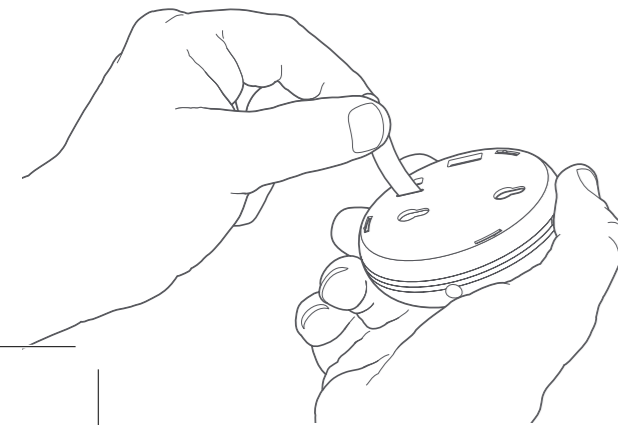


Pull out the clear tab.

This turns the Listener on. Your Alarm Base Station then finds it automatically.

As the Listener pairs to your Alarm Base Station, its LED ring blinks slowly, then quickly. Once it pairs, the LED glows blue for three seconds.

i If the Listener does not pair successfully, the LED ring glows red. To try the pairing process again, remove and reinstall the battery inside the Listener.

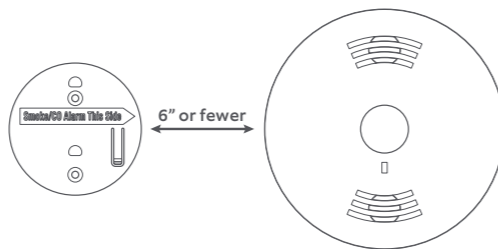


4. Install your Ring Smoke/CO Listener.

Line up the mounting bracket.

Find a place for the bracket within six inches (15.25 cm.) of your smoke or CO alarm.

Position the mounting bracket so that the arrow marked "Smoke/CO Alarm This Side" points directly at your smoke or CO alarm.



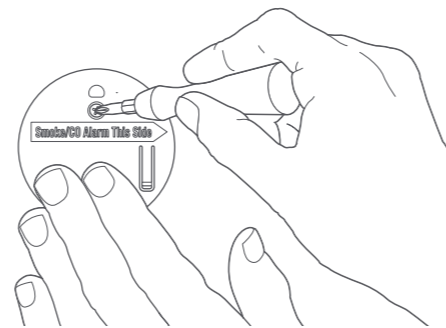
Secure the mounting bracket and mount the Listener.

Once you've decided on a location, secure the bracket to your ceiling with the included screws.

Place the Listener on the bracket posts, then slide to lock it in place.

i When mounting on drywall, pre-drill the holes and insert the included anchors.

i During the setup process, the Ring app prompts you to press the "Test" button on your Smoke or CO alarm. Mount the Listener on its bracket before testing your alarm.



Test the connection.

Press and release the Setup button quickly. If the LED ring blinks blue, the sensor is connected to the Base Station and is ready to use.

If it blinks red, try connecting again. To do this, hold the Setup button for three seconds.



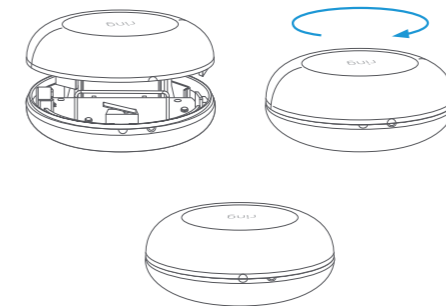
i If your Listener cannot connect, try installing your Alarm Range Extender between your Listener and Alarm Base Station, following the included instructions.

5. Additional information.

How to replace the battery:

Twist the lid on your Listener counter-clockwise and lift to remove. Replace the battery with a fresh CR123A cell. The Listener then reconnects to your Alarm Base Station automatically.

Place the lid back on the Listener, taking care to line up the semi-circle on the rim of the lid with the "open" semi-circle on the base. Twist the lid clockwise to lock it in.



How to remove Ring Smoke/CO Listener from your system:

Open the side menu in the Ring app and tap **Devices**, then **Base Station**. Next, select your Listener and tap the gear-shaped icon. Then tap **Remove Device**.

When prompted, open the Listener and remove and reinstall the battery to complete the removal.

How to perform a factory reset:

If your Listener stops working or will not connect (even with a good battery), try a factory reset.

To do this, press and hold the Setup button for 10 seconds. When the LED ring stops blinking, your Listener has reset.

i This process disconnects your Listener from your Alarm Base Station. To begin using the Listener again, set it up in the Ring app.

LED status patterns:

Smoke or CO alert sound detected  1 Blue Blink

Sensor tampered  3 Red Blinks

Firmware updating  Blue & Red Blinks

Do not paint this device!

Painting your Listener can prevent it from functioning correctly.

Painting smoke or CO alarms can degrade their performance as well, and is strongly discouraged.

© 2018 Ring LLC or its affiliates. RING, ALWAYS HOME, and all related logos are trademarks of Ring LLC or its affiliates. Last updated: 05/15/18