

## Installation Manual & Users Guide

---

### SPECIFICATIONS

Frequency: 433.92MHz

3Vdc lithium CR123A (1550 mAh)

years

Detection distance: 6 in max

Operating Temperature: 32°-120°F (0°-49°C) Battery: One

Operating Humidity: 5-95% RH non condensing Battery life: 5

Compatible with 433MHz DSC/Tyco Security Systems

Supervisory signal interval: 64 min(approx.)

Maximum current draw: 23mA during transmission

### OPERATION

The FireFighter™ sensor is designed to listen to any smoke, carbon or combo detector. Once confirmed as an alarm, it will transmit a signal to the alarm control panel which if connected to a central monitoring station, will dispatch the fire department.

**WARNING:** This audio detector is intended only for use with smoke, carbon and combo detectors but it does not detect the presence of smoke, heat, or fire directly.

### ENROLLING (see IMAGE: 1)

#### Manual Enroll Mode:

There are 2 sequential serial numbers printed on the FF2 case, the first serial # is to be used if you intend to monitor for SMOKE and second for CARBON. By way of example

432565 (SERIAL # for Smoke)

432566 (SERIAL # for Carbon)

#### Test for Correct Placement:

Step 1: Insert the battery: The 1<sup>st</sup> hour of power up allows easy testing via the test button on a Smoke, Carbon or Combo detector. After 1 hour it goes into a more stringent detection mode requiring multiple Temporal 3 or Temporal 4 patterns before it transmits.

Step 2: Mount the Firefighter within 6 Inches of the Smoke, Carbon or Combo detector. Make sure the audio microphone (Side with the holes in it) is pointed to the Smoke, Carbon or Combo sounder. Press and HOLD the test button on the Smoke, Carbon or Combo detector. When the detector starts beeping the LED on the Firefighter will track Temporal 3 and or Temporal 4 patterns and transmit accordingly. The LED should be ON whenever the detector 'Chirps'. If not, move the Firefighter closer to the detector. Use screws or provided double sided tape once you verify that the FF2 is tracking the sound of the detector.

\*\*\*\*\* It is possible that the FF2 can hear other smoke detectors in close proximity so it is important to choose and to install the FF2 close to a detector that is properly tracking and not hearing other detectors. FF2 is designed to work even if it hears other detectors but preferred install is close to a single detector. Typically smokes mounted in hallways could have an additional detector mounted in a close bedroom, simply verify that it is properly tracking and transmitting a signal to the panel when detector is triggered.

### MOUNTING (see IMAGE: 2 & 3)

Included with this device is a mounting bracket, hardware and double sided tape. To ensure proper operation ensure the side of the device with the small holes is directly facing the sounder holes on the smoke detector. Secure the mounting bracket to the wall or ceiling using the two mounting screws and double sided tape provided, then secure the audio detector to the mounting bracket using the small screw provided. **The FireFighter™ must be mounting within 6 inches of the detector for optimal operation.**

**WARNING:** Non-interconnected smoke detectors require an audio detector by each smoke detector sounder. This equipment should be installed in accordance with Chapter 2 of the National Fire Alarm Code, ANSI/NFPA 72, (National Fire Protection Association, Batterymarch Park, Quincy, MA 02269). Printed information describing proper installation, operation, testing, maintenance, evacuation planning, and repair service is to be provided with this equipment. Warning: Owner's instruction notice: 'Not to be removed by anyone except occupant'.

## TESTING (see IMAGE: 1)

To test the RF transmission from the mounted position you can either generate a tamper by removing the cover or press the learn button located next to the tamper switch. Press and release ONCE to send a Smoke signal or press and HOLD for 2 seconds to send a Carbon signal. To test the audio detection, press and hold the smoke detector test button. Some Panels offer a Fire with Verification zone type. If this is the zone type programmed, you must press and hold the smoke detector button for at least 30 seconds to ensure that FireFighter™ has had sufficient time to identify the smoke alarm pattern and lock into alarm. Ensure the FireFighter™ cover is on and that you wear hearing protection.

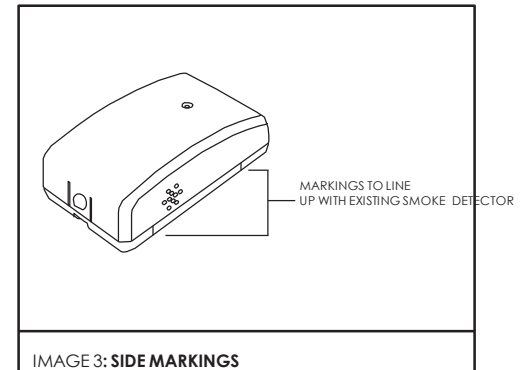
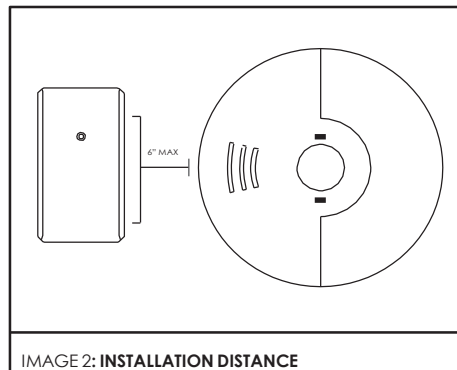
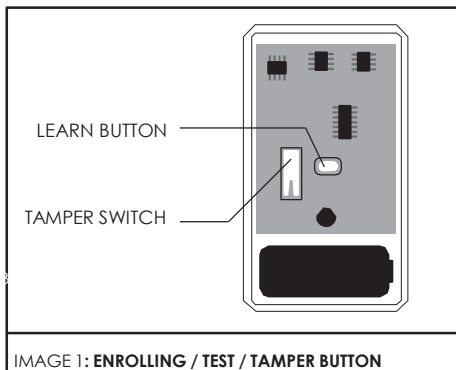
**NOTE:** This system must be checked by a qualified technician at least once every three (3) years. Please test the unit once per week to ensure proper functionality.

## Older NON temporal 3 Smoke Detectors

If you happen to have an older NON temporal 3 pattern smoke detector you can change the Firefighter to be a universal listening device. When put into a universal listening pattern you must ensure that the Firefighter is not within listening distance of ANY Security alarm sirens or Alarm keypads.

1. Open the case, Remove the battery.
2. While holding the tamper switch IN, replace the battery, then release the tamper switch.  
This will toggle between Temporal and generic mode  
ONE flash: Temporal 3 and 4 mode (Will only trigger on Temporal Patterns)  
TWO flashes: Generic listening mode. (Will trigger after 30 seconds of continuous 3K frequency sounder)  
You can always verify the mode by simply removing the battery and replacing it. The LED will flash once or twice depending on the mode it is in.
3. When in generic, **non-temporal 3 mode**, the firefighter should not be installed in the same room as ANY alarm keypads or sirens. It is best to set the alarm off and make sure the RED LED on the firefighter does not hear any keypad or siren since it is looking for 30 seconds of continuous pattern at 3000-4000 Khz. If it does move the firefighter so it does not hear any siren or keypad that may be in the same room as the firefighter.

**WARNING:** While the audio detector monitors its own battery, it does not monitor the battery in the smoke detectors. Batteries should be changed as per the original smoke detector manufacturer's instructions. Always test the audio detector and smoke alarms after battery installation to confirm proper operation



## WARRANTY

Encore Controls warrants that for a period of 2 years from the date of purchase that this product is free from defects in material and workmanship. This warranty does not apply to damage caused by shipping or handling, or damage caused by accident, abuse, misuse, misapplication, ordinary wear, improper maintenance, failure to follow instructions or as a result of any unauthorized modifications. If there is a defect in materials and workmanship under normal use within the warranty period Encore Controls shall, at its option, repair or replace the defective equipment upon return of the equipment to the original point of purchase. The foregoing warranty shall apply only to the original buyer, and is and shall be in lieu of any and all other warranties, whether expressed or implied and of all other obligations or liabilities on the part of Encore Controls neither assumes responsibility for, nor authorizes any other person purporting to act on its behalf to modify or to change this warranty, nor to assume for it any other warranty or liability concerning this product. The maximum liability for Encore Controls under all circumstances for any warranty issue shall be limited to a replacement of the defective product. It is recommended that the customer check their equipment on a regular basis for proper operation.

THE LIABILITY OF ENCORE CONTROLS, OR ANY OF ITS PARENT OR SUBSIDIARY CORPORATIONS ARISING FROM THE SALE OF THIS SMOKE ALARM DETECTOR OR UNDER THE TERMS OF THIS LIMITED WARRANTY SHALL NOT IN ANY CASE EXCEED THE COST OF REPLACEMENT OF A SMOKE ALARM DETECTOR AND, IN NO CASE, SHALL ENCORE CONTROLS, OR ANY OF ITS PARENT OR SUBSIDIARY CORPORATIONS BE LIABLE FOR CONSEQUENTIAL LOSSES OR DAMAGES RESULTING FROM THE FAILURE OF THE SMOKE ALARM DETECTOR OR FOR BREACH OF THIS OR ANY OTHER WARRANTY, EXPRESS OR IMPLIED, EVEN IF THE LOSS OR DAMAGE IS CAUSED BY THE COMPANY'S NEGLIGENCE OR FAULT.

The Firefighter™ detector does not detect the presence of smoke, heat, or fire directly. It relies solely on the presence of an audio alarm signal generated by an existing smoke or fire detector in proximity to the Firefighter™ detector to make such a determination. The Firefighter™ detector must be used with smoke detectors certified according to UL Standards, and in strict accordance with the installation and operation instructions provided with such detectors. It is the owner's responsibility to ensure that smoke or fire detectors used in conjunction with the Firefighter™ detector are maintained and tested on a regular basis in accordance with the manufacturer's instructions. Encore Controls expressly disclaims any responsibility for the failure of the Firefighter™ detector to detect

the presence of smoke or fire due to the failure of any smoke or fire detector used in conjunction with the Firefighter™ detector to operate properly due to any condition, including improper installation, operation, maintenance or testing of such smoke or fire detector.