

# WST-612

## Flood and Freeze Sensor

patent pending

**DRAFT MANUAL- NOT for PRODUCTION**

### Installation Manual & Users Guide

---

#### SPECIFICATIONS

Frequency: 345 MHz  
Battery: One 3Vdc lithium CR2450 (620mAH)  
Battery life: up to 10 years  
Detection of standing Water within 1 second  
Across Gold probes  
Detect Freeze at 5C restores at 7C

Operating Temperature: 32°-120°F (0°-49°C)  
Operating Humidity: 5-95% RH non condensing  
Compatible with Honeywell and 2GIG  
Supervisory signal interval: 64 min(approx.)  
Maximum current draw: 23mA during transmission  
Water resistant to XXX

---

#### OPERATION

The WST-612 sensor is designed to detect water across the gold probes and will alert immediately when present. The Freeze sensor will trigger when temperature is below 5C and will send a restoral at 7C.

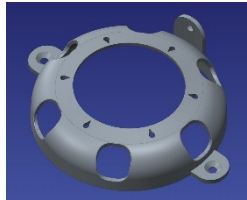
#### ENROLLING

To enroll the sensor, set your panel into sensor learn mode. Refer to your specific alarm panel instruction manual for details on these menus. On the WST-612, locate the vertical line on the side of the sensor. This indicates the location of the internal reed switch. To learn in the flood sensor, initiate a transmission by tapping the included magnet to this spot. Repeat as needed by the control panel. The flood sensor will enroll as Loop 1. To learn in the freeze sensor, initiate a transmission by holding the magnet to the reed for at least 2 seconds. The freeze sensors will enroll as Loop 2. You can also trigger the unit by placing a wet finger across the gold probes for a few seconds. Since the flood/freeze are two sensors in one, you will need to enroll them as TWO separate sensors if you desire to use them both. **\*\*CURRENT SAMPLES DO NOT SUPPORT 2 SECOND FREEZE ENROLLMENT, MUST BE ENROLLED BY**

**MANUALLY ENTERING THE SERIAL NUMBER \*\*\*\***

#### PLACEMENT

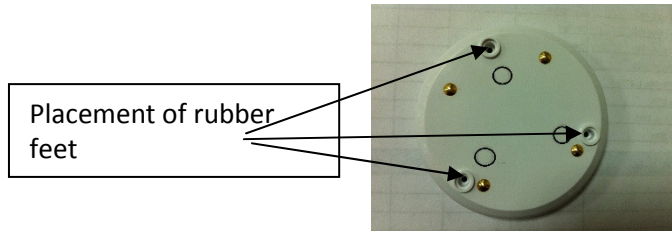
Place the flood detector anywhere that you wish to detect a flood or freezing temperature. Under a sink, in or near a hot water heater, a basement or behind a washing machine. If you would like to make sure the flood does not move from its intended location you can use the provided sensor cover and mount it to the wall or floor



Draft Picture

#### Water Height Adjustment

The Firefighter comes with 2 sets of rubber feet that can be used to adjust the height of the probes to either 3/16<sup>th</sup> in or 3/8<sup>th</sup> in. Place the rubber feet in the position shown below if you wish to raise the detection level of water



#### Testing the unit

By using the magnet you can send a Flood OR Freeze transmission. Place the magnet on the line on top of the case and remove it within 1 second, this will send a Flood transmission (Loop1), if you hold the magnet for 2 seconds, it will send a Freeze transmission (Loop2). Placing wet fingers on any two probes will also trigger a flood transmission.

## REPLACING THE BATTERY

When the battery is low a signal will be sent to the control panel. To replace the battery:

1. Carefully remove the white rubber feet on the bottom of the flood detector.
2. Remove the 3 screws and open the case. Replace battery with a Panasonic CR2450 Lithium Battery
3. Replace the screws and rubber feet

## FCC COMPLIANCE STATEMENT

This equipment has been tested and found to comply with the limits for Class B digital devices, pursuant to Part 15 of the FCC Rules. These limits are designed to provide reasonable protection against harmful interference in a residential installation. This equipment generates uses and can radiate radio frequency energy and, if not installed and used in accordance with the instruction manual, may cause harmful interference to radio communications. However, there is no guarantee that interference will not occur in a particular installation. If this equipment does cause harmful interference to radio or television reception, which can be determined by turning the equipment off and on, the user is encouraged to try to correct the interference by one or more of the following measures:

- Re-orient or relocate the receiving antenna
- Increase the separation between the equipment and receiver
- Connect the equipment to an outlet on a different circuit from the receiver
- Consult the dealer or an experienced radio/TV contractor for help.

**WARNING:** Changes or modifications not expressly approved by Encore Controls could void the user's authority to operate the equipment.

This device complies with Industry Canada license-exempt RSS standard(s). Operation is subject to the following two conditions: (1) this device may not cause interference, and (2) this device must accept any interference, including interference that may cause undesired operation of the device.

Cet appareil est conforme la norme d'Industrie Canada exempts de licence RSS. Son fonctionnement est soumis aux deux conditions suivantes: (1) cet appareil ne peut pas provoquer d'interférences, et (2) cet appareil doit accepter toute interférence, y compris les interférences qui peuvent causer un mauvais fonctionnement de la dispositif.

**FCC ID: XQC-WST612 IC:9863B-WST612**

## WARRANTY

Ecolink warrants that for a period of 2 years from the date of purchase that this product is free from defects in material and workmanship. This warranty does not apply to damage caused by shipping or handling, or damage caused by accident, abuse, misuse, misapplication, ordinary wear, improper maintenance, failure to follow instructions or as a result of any unauthorized modifications. If there is a defect in materials and workmanship under normal use within the warranty period Ecolink shall, at its option, repair or replace the defective equipment upon return of the equipment to the original point of purchase. The foregoing warranty shall apply only to the original buyer, and is and shall be in lieu of any and all other warranties, whether expressed or implied and of all other obligations or liabilities on the part of Ecolink neither assumes responsibility for, nor authorizes any other person purporting to act on its behalf to modify or to change this warranty, nor to assume for it any other warranty or liability concerning this product. The maximum liability for Ecolink under all circumstances for any warranty issue shall be limited to a replacement of the defective product. It is recommended that the customer check their equipment on a regular basis for proper operation.

THE LIABILITY OF ECOLINK, OR ANY OF ITS PARENT OR SUBSIDIARY CORPORATIONS ARISING FROM THE SALE OF THIS SMOKE ALARM DETECTOR OR UNDER THE TERMS OF THIS LIMITED WARRANTY SHALL NOT IN ANY CASE EXCEED THE COST OF REPLACEMENT OF A SMOKE ALARM DETECTOR AND, IN NO CASE, SHALL ENCORE CONTROLS, OR ANY OF ITS PARENT OR SUBSIDIARY CORPORATIONS BE LIABLE FOR CONSEQUENTIAL LOSSES OR DAMAGES RESULTING FROM THE FAILURE OF THE SMOKE ALARM DETECTOR OR FOR BREACH OF THIS OR ANY OTHER WARRANTY, EXPRESS OR IMPLIED, EVEN IF THE LOSS OR DAMAGE IS CAUSED BY THE COMPANY'S NEGLIGENCE OR FAULT.

The WST-601 detector does not detect the presence of smoke, heat, or fire directly. It relies solely on the presence of an audio alarm signal generated by an existing smoke or fire detector in proximity to the WST-601 detector to make such a determination. The WST-601 detector must be used with smoke detectors certified according to UL Standards, and in strict accordance with the installation and operation instructions provided with such detectors. It is the owner's responsibility to ensure that smoke or fire detectors used in conjunction with the WST-601 detector are maintained and tested on a regular basis in accordance with the manufacturer's instructions. Ecolink expressly disclaims any responsibility for the failure of the WST-601 detector to detect the presence of smoke or fire due to the failure of any smoke or fire detector used in conjunction with the WST-601 detector to operate properly due to any condition, including improper installation, operation, maintenance or testing of such smoke or fire detector.



Ecolink Intelligent  
technology Inc.  
2055 Corte Del Nogal  
Carlsbad CA 92011  
855-632-6546

PN WST-612 R0.01  
REV DATE:  
patent pending