

Quick Start Guide

802.11a/ac/b/g/n Wireless Access Point

ECW7212-L

1. Unpack the AP and Check Contents



ECW7212-L
802.11a/ac/b/g/n
Wireless Access Point



AC power adapter



Four adhesive rubber feet



Wall-mount kit—2 wall plugs and 2 screws



Documentation—*Quick Start Guide* (this document) and *Safety and Regulatory Information*

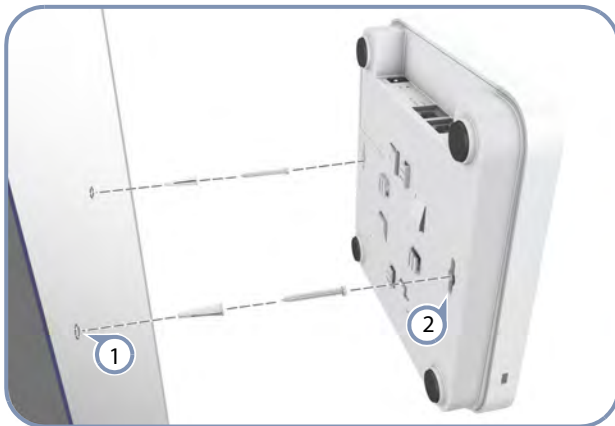
Note: For safety and regulatory information, refer to the *Safety and Regulatory Information* document included with the AP.

2. Mount the AP

The AP can be mounted on a desktop, wall, or ceiling T-bar.

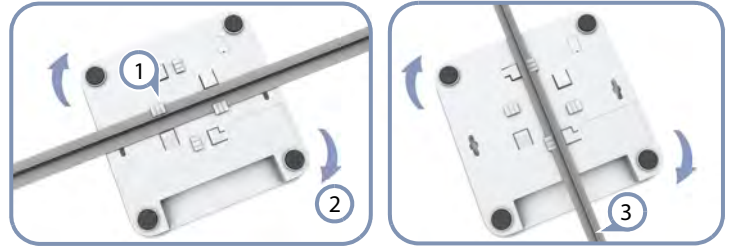
Note: The AP can be placed on a desktop using the included rubber feet. When mounting the AP on a wall or ceiling, do not attach the rubber feet.

a. Mounting on a Wall



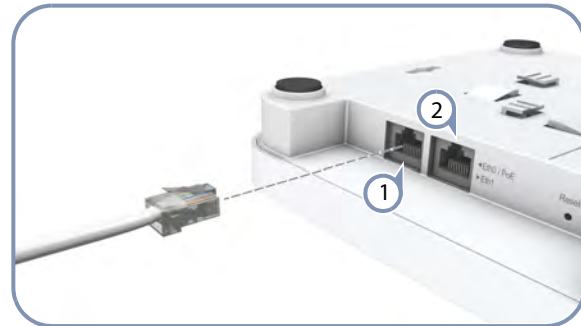
- 1 Set two screws in the wall 140 mm (5.51 in.) apart.
- 2 Slide the AP's wall mounting slots down onto the screws so that the unit is secure.

b. Mounting on a Ceiling T-Bar



- 1 Position the AP's ceiling-mount clip holders on either side of the T-bar.
- 2 Turn the AP until the two clips lock it to the T-bar.
- 3 The AP mounting supports two different sizes of suspended ceiling T-bars. The position illustrated above left is for 15 mm bars. Use the position at a 90 degrees angle for 24.5 mm bars.

3. Connect LAN Cable



- 1 Connect Category 5e or better cable to the Eth0/PoE 1000BASE-T RJ-45 port.
- 2 (Optional) Connect a local LAN switch or computer to the Eth1 1000BASE-T RJ-45 port.

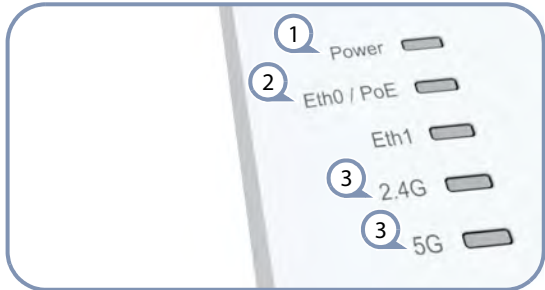
Note: The Eth0/PoE port connection can also provide PoE power to the unit.

3. (Optional) Connect AC Power Adapter



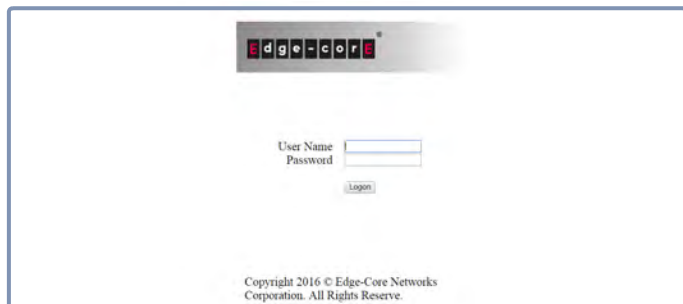
- 1 Connect the power adapter to the power socket on the AP.
- 2 Plug the power adapter into a nearby AC power source.

4. Verify AP Operation



- 1 Power — on red for normal operation.
- 2 Eth0/Eth1 — on/blinking green for a valid RJ-45 port link.
- 3 2.4G/5G — on/blinking green for radio enabled.

5. Connect to the Web User Interface



- 1 Connect a PC directly to one of the AP's LAN ports.
- 2 Set the PC IP address to be on the same subnet as the AP (that is, the PC and AP addresses must both start 192.168.1.x with subnet mask 255.255.255.0).
- 3 Enter the AP's default management IP address of 192.168.1.10 into the web browser address bar.
- 4 Log in to the web interface using default settings:
User Name = admin
Password = admin

i Note: To reset the AP to factory defaults, press the Reset button for more than 5 seconds.

Note: For more information on AP configuration using the web interface, refer to the *Management Guide*, which is on the Edgecore web site, www.edge-core.com.

Hardware Specifications

Chassis

Size (W x D x H)	176.3 x 176.3 x 40.4 mm (6.94 x 6.94 x 1.59 in.)
Weight	362 g (12.77 oz)
Temperature	Operating: 0 °C to 45 °C (32 °F to 113 °F) Storage: -40 °C to 70 °C (-40 °F to 158 °F)
Humidity	Operating: 5% to 95% (non-condensing)

Network Interfaces

Ports	Eth0/PoE RJ-45 Port: 1000BASE-T, PoE PD Eth1 RJ-45 Port: 1000BASE-T
2.4 GHz Radio	IEEE 802.11b/g/n
5 GHz Radio	IEEE 802.11a/ac/n
Radio Frequencies	2.4 – 2.4835 GHz (US, Canada, ETSI) 2.412 – 2.462 GHz (NCC) 5.15 – 5.25 GHz (lower band) US/Canada, Europe 5.725 – 5.825 GHz (upper band) US/Canada 5.280 – 5.320 GHz (NCC) 5.745 – 5.825 GHz (NCC)

Power Supply

PoE Input Power	48 VDC, 802.3af-standard compliant
AC Power Adapter	AC Input: 100 ~ 240 VAC, 50/60 Hz DC Output: 12 VDC, 1.0 A
Power Consumption	11 W maximum

Regulatory Compliances

Radio	EN 300 328 V1.9.1 (2015-02) EN 301 893 V1.8.1 (2015-03) EN 301 489-1 V1.9.2 (2011-09) EN 301 489-17 V2.2.1 (2012-09) 47 CFR FCC Part 15 Subpart C 15.247 (2400-2483.5 MHz) 47 CFR FCC Part 15 Subpart E 15.407 (5150-5250 MHz / 5725-5850 MHz)
Emissions	EN 55022 2010+AC:2011 EN 61000-3-2:2014 EN 61000-3-3:2013 EN 55032:2012/AC:2013 Canada Standard ICES-003, Issue 6 FCC Class B Part 15, 2014
Immunity	EN 55024 : 2010
Safety	UL (CSA 22.2 No. 60950-1 & UL60950-1) CB (IEC/EN60950-1)

FCC Statement

Federal Communication Commission Interference Statement

This equipment has been tested and found to comply with the limits for a Class B digital device, pursuant to Part 15 of the FCC Rules. These limits are designed to provide reasonable protection against harmful interference in a residential installation. This equipment generates, uses and can radiate radio frequency energy and, if not installed and used in accordance with the instructions, may cause harmful interference to radio communications. However, there is no guarantee that interference will not occur in a particular installation. If this equipment does cause harmful interference to radio or television reception, which can be determined by turning the equipment off and on, the user is encouraged to try to correct the interference by one of the following measures:

- Reorient or relocate the receiving antenna.
- Increase the separation between the equipment and receiver.
- Connect the equipment into an outlet on a circuit different from that to which the receiver is connected.
- Consult the dealer or an experienced radio/TV technician for help.

FCC Caution: Any changes or modifications not expressly approved by the party responsible for compliance could void the user's authority to operate this equipment.

This device complies with Part 15 of the FCC Rules. Operation is subject to the following two conditions: (1) This device may not cause harmful interference, and (2) this device must accept any interference received, including interference that may cause undesired operation.

For product available in the USA/Canada market, only channel 1~11 can be operated. Selection of other channels is not possible.

This device is going to be operated in 5.15~5.25GHz frequency range, it is restricted in indoor environment only.

This device is restricted for indoor use.

IMPORTANT NOTE:

FCC Radiation Exposure Statement:

This equipment complies with FCC radiation exposure limits set forth for an uncontrolled environment. This equipment should be installed and operated with minimum distance 20cm between the radiator & your body.