

Quick Start Guide

802.11a/ac/b/g/n Outdoor Wireless Access Point
ECWO7220-L

1. Unpack the AP and Check Contents



ECWO7220-L
802.11a/ac/b/g/n
Wireless Access Point

Mounting kit

Two weatherproof port covers

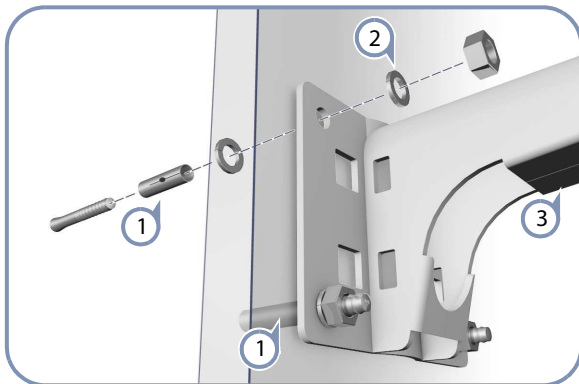
Documentation—*Quick Start Guide* (this document) and *Safety and Regulatory Information*

Note: For safety and regulatory information, refer to the *Safety and Regulatory Information* document included with the AP.

2. Mount the AP

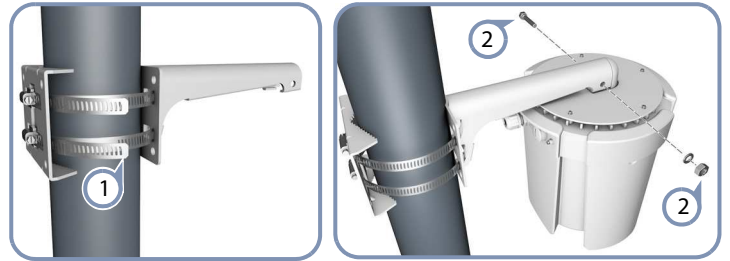
The AP can be mounted on a wall, or pole.

a. Mounting on a Wall



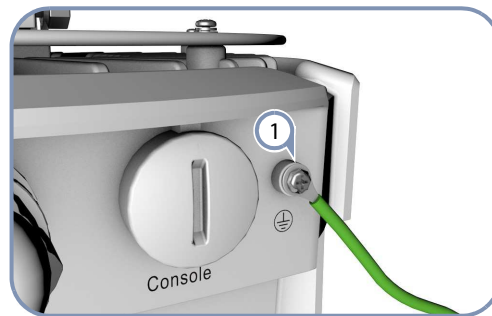
- 1 Drill four holes in the wall deep enough for the included wall expansion bolts. Insert the four bolts in the holes leaving the threaded part exposed.
- 2 Place the wall-mount bracket over the four bolts and use the nuts and washers to secure the bracket to the wall.
- 3 Slide the AP onto the bracket arm and secure it using the included long bolt, nut, and washer.

b. Mounting on a Pole



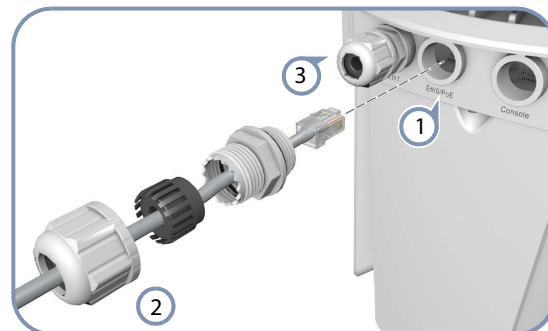
- 1 Secure the two mounting bracket parts to the pole using the two included steel-band clamps.
- 2 Slide the AP onto the bracket arm and secure it using the included long bolt, nut, and washer.

4. Ground the AP



- 1 Ground the AP by connecting the included ground wire to the grounding point on the AP and to nearby good earth connection.

3. Connect LAN Cables



- 1 Connect outdoor-rated Category 5e or better cable to the 1000BASE-T RJ-45 Eth0/PoE port. Be sure to use the included weatherproof RJ-45 port cover.
- 2 Connect the other end of the outdoor-rated Ethernet cable to an 802.3at-compliant PoE switch or power injector.
- 3 (Optional) Connect a local LAN switch or computer to the Eth1 1000BASE-T RJ-45 port. Be sure to use the included weatherproof RJ-45 port cover.

Note: The Eth/PoE port connection provides PoE power to the unit.

5. Connect to the Web User Interface



- 1 Connect a PC directly to the AP or to the PoE network switch connected to the AP.
- 2 Set the PC IP address to be on the same subnet as the AP (that is, the PC and AP addresses must both start 192.168.1.x with subnet mask 255.255.255.0).
- 3 Enter the AP's default management IP address of 192.168.1.10 into the web browser address bar.
- 4 Log in to the web interface using default settings:
User Name = admin
Password = admin

Note: For more information on AP configuration using the web interface, refer to the *Management Guide*, which is on the Edgecore web site, www.edge-core.com.

Hardware Specifications

Chassis

Size (W x D x H)	239 x 239 x 290 mm (9.41 x 9.41 x 11.42 inch)
Weight	x.x kg (x.x lb)
Temperature	Operating: -40 °C to 60 °C (-40 °F to 140 °F) Storage: -40 °C to 70 °C (-40 °F to 158 °F)
Humidity	Operating: 5% to 95% (non-condensing)

Network Interfaces

Ports	Eth0/PoE RJ-45 Port: 1000BASE-T, PoE PD Eth1 RJ-45 Port: 1000BASE-T
2.4 GHz Radio	IEEE 802.11b/g/n
5 GHz Radio	IEEE 802.11a/ac/n
Radio Frequencies	For 15.247: 2.412 ~ 2.462GHz For 15.407: 5.18GHz ~ 5.24 GHz and 5.745GHz ~ 5.825GHz

Power Supply

PoE Input Power	48 VDC, 802.3at-standard compliant
Power Consumption	25.5 W maximum

Regulatory Compliances

Radio	EN 300 328 V1.9.1 (2015-02) EN 301 893 V1.8.1 (2015-03) EN 301 489-1 V1.9.2 (2011-09) EN 301 489-7 V2.2.1 (2012-09) FCC Part 15C 15.247/15.207 FCC Part 15E 15.407
Emissions	EN 55022 2010+AC:2011 EN 61000-3-2:2014 FCC Class B Part 15, 2014
Immunity	EN 55024 : 2010 EN 61000-4-2 : 2009
Safety	UL (CSA 22.2 No. 60950-1 & UL60950-1) CB (IEC/EN60950-1)